



SRC CLIMATE REFERENCE STATION DAILY DATA REPORT

SASKATOON STATION 4057180

Saskatchewan 52°09' N 106°36' W 497 m asl Estab. 1963

Preliminary AUGUST 2024

Day	Temperature						Degree-days			Precipitation			Relative Humidity		Station Pressure (sea level)	
	Max	Normal Max	Min	Normal Min	Mean	Normal Mean	Growing	Heating	Cooling	Geonor all-season ppt Gauge	Tipping Bucket	Notes	Max ½ hr Avg	Min ½ hr Avg	Max ½ hr Avg	Min ½ hr Avg
	°C	1991-2020	°C	1991-2020	°C	1991-2020	5°C base	18°C base	18°C base	mm	mm		%	%	mbar	mbar
1	29.1	25.7	16.0	11.5	22.6	18.6	17.6	0.0	4.6	0.0	0.0		80	27	1020	1009
2	30.3	25.9	13.9	12.2	22.1	19.1	17.1	0.0	4.1	0.0	0.0		72	28	1021	1016
3	26.7	25.5	9.2	12.0	18.0	18.8	13.0	0.0	0.0	0.0	0.0		84	26	1022	1016
4	25.2	25.9	14.9	12.7	20.1	19.3	15.1	0.0	2.1	0.3	0.3	showers	84	40	1020	1016
5	24.3	27.2	12.4	12.7	18.4	20.0	13.4	0.0	0.4	3.5	3.6	showers	89	40	1022	1017
6	19.0	26.8	12.6	13.3	15.8	20.1	10.8	2.2	0.0	5.8	5.8	showers	92	64	1019	1015
7	20.2	26.3	8.9	12.8	14.6	19.6	9.6	3.4	0.0	0.0	0.0	smoke	92	33	1026	1020
8	21.7	24.8	5.5	12.7	13.6	18.8	8.6	4.4	0.0	0.0	0.0		88	31	1028	1025
9	24.4	25.2	7.7	12.2	16.1	18.7	11.1	1.9	0.0	0.0	0.0	smoke	85	29	1025	1022
10	26.4	26.3	9.6	12.7	18.0	19.5	13.0	0.0	0.0	0.0	0.0		90	27	1022	1018
11	27.9	24.4	10.1	12.5	19.0	18.5	14.0	0.0	1.0	0.0	0.0		79	23	1019	1016
12	29.8	24.6	12.4	11.5	21.1	18.1	16.1	0.0	3.1	0.0	0.0		72	18	1016	1011
13	32.6	25.3	16.8	11.2	24.7	18.3	19.7	0.0	6.7	0.9	0.8	t-storm	76	24	1011	1006
14	31.0	25.6	15.9	12.3	23.5	19.0	18.5	0.0	5.5	0.0	0.0	smoke	87	26	1012	1008
15	26.9	24.9	13.0	11.8	20.0	18.3	15.0	0.0	2.0	0.0	0.0	smoke	87	34	1018	1012
16	26.8	23.6	8.0	11.2	17.4	17.5	12.4	0.6	0.0	0.0	0.0		93	29	1020	1017
17	24.2	24.5	15.1	11.3	19.7	17.9	14.7	0.0	1.7	2.3	2.3	showers	87	29	1019	1014
18	29.6	25.1	12.7	11.3	21.2	18.2	16.2	0.0	3.2	0.0	0.0		91	35	1016	1015
19	29.8	25.9	17.7	11.7	23.8	18.8	18.8	0.0	5.8	0.0	0.0		91	38	1017	1012
20	35.1	24.5	19.1	10.8	27.1	17.6	22.1	0.0	9.1	0.0	0.0		78	14	1012	1008
21	32.6	25.7	15.4	10.7	24.0	18.2	19.0	0.0	6.0	0.0	0.0		67	16	1012	1009
22	24.1	25.2	11.7	12.0	17.9	18.6	12.9	0.1	0.0	0.0	0.0		88	49	1016	1011
23	27.7	24.3	9.2	11.1	18.5	17.7	13.5	0.0	0.5	27.5	26.4	t-storm	93	33	1016	1009
24	29.9	24.4	17.9	11.1	23.9	17.8	18.9	0.0	5.9	8.5	8.6	t-storm	89	19	1009	1005
25	22.0	24.7	13.0	10.5	17.5	17.6	12.5	0.5	0.0	0.0	0.0		71	37	1020	1008
26	25.2	23.9	8.8	10.2	17.0	17.1	12.0	1.0	0.0	0.0	0.0		87	24	1023	1020
27	30.2	24.5	12.9	10.2	21.6	17.4	16.6	0.0	3.6	0.0	0.0		72	24	1020	1010
28	21.9	24.8	10.8	10.7	16.4	17.8	11.4	1.6	0.0	6.8	6.4	t-storm	91	38	1012	1009
29	24.3	24.4	7.6	10.5	16.0	17.5	11.0	2.0	0.0	0.0	0.3		93	34	1012	1010
30	26.4	23.6	10.9	10.6	18.7	17.1	13.7	0.0	0.7	0.0	0.0		78	24	1016	1012
31	23.6	23.1	10.7	10.1	17.2	16.6	12.2	0.8	0.0	0.0	0.0		83	24	1022	1015
Total							450.5	18.5	66.0	55.6	54.4		Extreme / Date	Extreme / Date	Extreme / Date	Extreme / Date
Avg	26.7	25.1	12.3	11.6	19.5	18.3	1991-2020 Normal			46.4	Aug 1991-2020 Normal					
Extreme Date	35.1		5.5				413.0	41.6	51.6	323.9	Year to date 2024 Cumulative		93	14	1028	1005
	20		8							274.8	Year to date Cumulative Normal		16	20	8	24

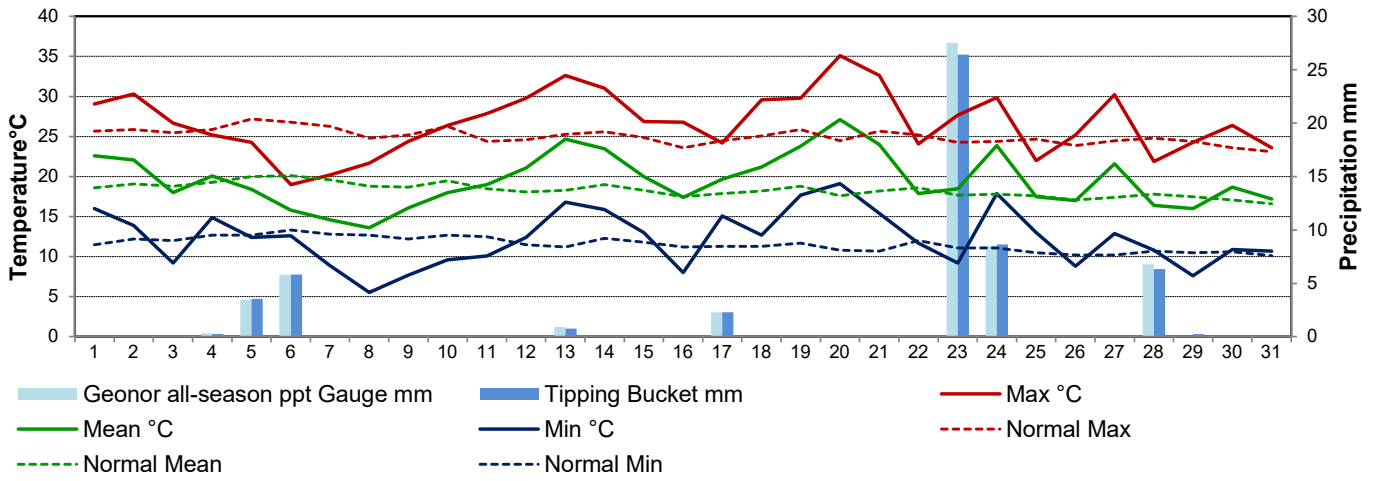
Note: Red numbers indicate manual calculation; Red cell indicate data not available

It has not been corrected for wind speed.

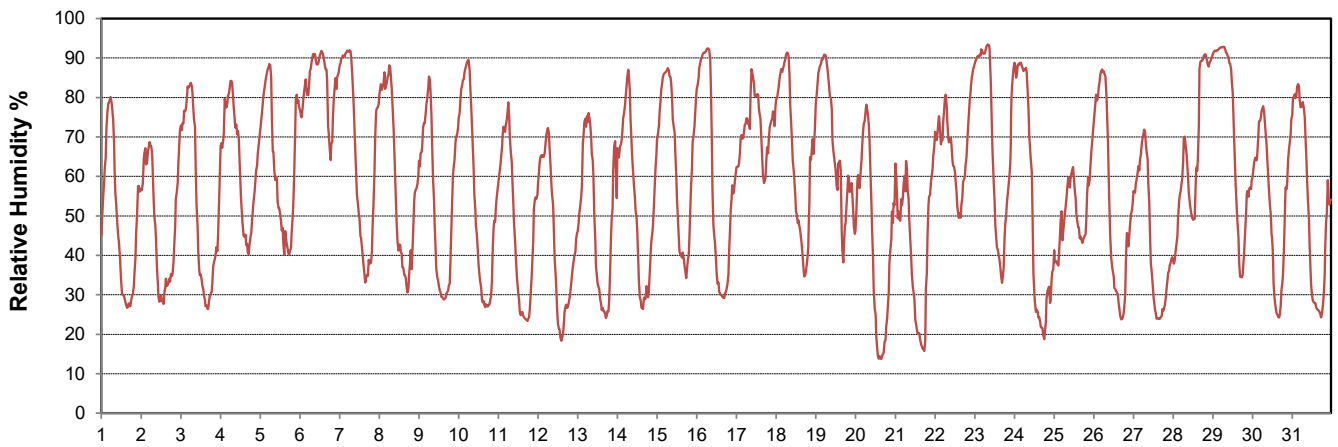
SRC proudly recognizes the following CRS supporters:



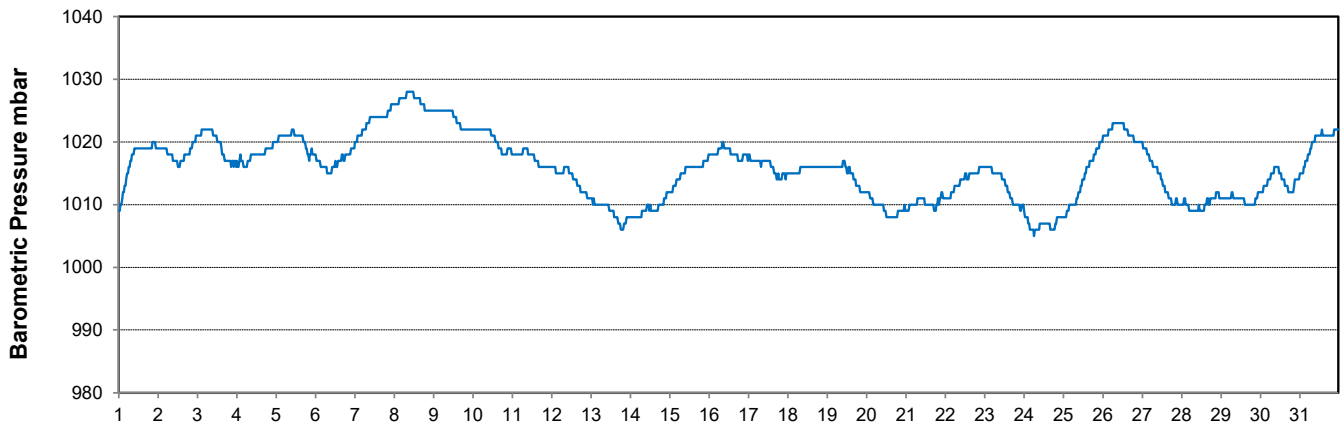
Temperature and Precipitation for August 2024



Relative Humidity for August 2024



Barometric Pressure Corrected to Sea Level for August 2024





SRC CLIMATE REFERENCE STATION DAILY DATA REPORT

SASKATOON STATION 4057180

Saskatchewan 52°09' N 106°36' W 497 m asl Estab. 1963

Preliminary AUGUST 2024

Day	Wind Gust (10 meters)			Wind Speed (10 meters) Daily Average	Soil Temperatures at 0900hrs								Radiation				
	Max	Direction	Time		Surface	5 cm	10 cm	20 cm	50 cm	100 cm	150 cm	300 cm	Bright Sunshine	Possible	% Possible	Global	Diffuse
	km/h			km/h	°C	°C	°C	°C	°C	°C	°C	°C	hours	hours		MJ/m ²	MJ/m ²
1	35.9	WNW	14:11	13.0	20.0	21.0	21.5	22.0	19.0	15.0	13.0	9.5	14.4	15.5	93.2	25.3	3.5
2	38.3	N	17:11	13.3	22.0	20.5	21.0	22.0	19.0	15.0	13.0	10.0	12.5	15.4	81.2	22.6	6.1
3	30.9	ESE	23:28	11.2	15.0	19.5	20.5	22.0	19.0	15.0	13.0	10.0	8.7	15.3	56.7	21.1	6.3
4	31.3	ESE	17:32	14.4	18.5	20.5	21.0	22.0	19.0	15.0	13.0	10.0	9.0	15.3	58.9	18.5	8.3
5	33.8	SE	11:01	14.8	17.0	19.5	20.5	21.5	19.0	15.0	13.5	10.0	4.7	15.2	30.9	11.3	8.4
6	33.1	NNE	14:43	12.2	15.0	18.5	19.5	20.5	18.5	15.0	13.5	10.0	2.1	15.2	13.8	5.4	3.8
7	32.2	NE	16:40	12.1	13.0	15.5	16.5	18.0	18.0	15.0	13.5	10.0	11.9	15.1	78.8	22.0	7.5
8	25.5	NE	12:14	5.8	11.5	13.0	14.5	17.0	17.5	15.0	13.5	10.0	10.5	15.1	69.7	18.9	8.1
9	21.9	NE	16:56	7.4	15.0	14.0	15.5	17.0	17.0	15.0	13.5	10.0	12.5	15.0	83.3	21.1	7.4
10	27.9	ESE	20:30	8.4	16.5	15.0	16.0	17.5	17.0	14.5	13.5	10.5	14.4	14.9	96.4	24.3	3.5
11	27.2	ESE	23:37	10.3	17.0	17.0	18.0	19.0	17.0	14.5	13.5	10.5	14.1	14.9	94.8	23.9	3.5
12	35.6	SSE	3:24	16.6	20.0	18.0	19.0	20.0	17.5	14.5	13.5	10.5	12.5	14.8	84.3	21.2	7.0
13	37.8	SE	15:06	15.7	20.0	19.5	20.0	20.5	17.5	14.5	13.5	10.5	11.2	14.8	75.9	21.8	5.8
14	34.4	NW	14:53	12.4	20.0	19.5	20.0	21.0	18.0	14.5	13.5	10.5	11.2	14.7	76.2	20.6	5.1
15	30.3	N	14:39	12.8	18.5	20.0	21.0	21.5	18.5	14.5	13.5	10.5	9.3	14.6	63.5	18.3	8.5
16	29.1	E	22:25	10.7	16.5	17.5	19.0	21.0	18.5	15.0	13.5	10.5	12.8	14.6	87.8	21.5	6.3
17	39.0	E	17:40	17.3	16.0	19.5	20.0	21.0	18.5	15.0	13.5	10.5	3.6	14.5	24.8	8.8	6.2
18	21.7	ENE	0:04	8.2	19.0	17.5	18.0	19.5	18.0	15.0	13.5	10.5	12.6	14.5	87.2	20.5	5.9
19	38.7	SE	8:25	14.6	19.0	20.0	20.0	21.0	18.0	15.0	13.5	10.5	4.5	14.4	31.3	9.5	6.2
20	43.8	SW	12:17	17.6	22.0	19.5	20.0	20.5	18.0	15.0	13.5	10.5	12.6	14.3	87.9	21.0	4.8
21	33.5	N	18:26	9.2	18.0	19.0	20.0	21.5	18.5	15.0	13.5	10.5	9.5	14.3	66.6	18.5	6.2
22	32.3	NW	12:56	12.2	17.5	19.0	20.0	21.5	18.5	15.0	13.5	11.0	8.7	14.2	61.3	15.4	8.5
23	50.8	SE	22:38	13.8	15.0	17.5	18.5	20.0	18.5	15.0	13.5	11.0	9.1	14.1	64.4	17.9	6.4
24	39.6	NNE	1:08	16.6	20.0	19.5	20.0	21.0	18.5	15.0	13.5	11.0	12.6	14.1	89.6	19.5	5.6
25	53.0	WNW	12:17	18.8	16.5	17.0	18.5	20.5	18.5	15.0	13.5	11.0	10.5	14.0	74.9	17.4	6.0
26	29.6	SE	23:28	7.8	13.5	14.5	15.5	18.0	18.0	15.0	13.5	11.0	13.1	13.9	94.0	21.3	2.7
27	50.0	S	12:50	23.0	17.0	16.0	16.5	18.0	17.5	15.0	14.0	11.0	12.2	13.9	87.9	20.2	4.1
28	37.5	WSW	15:10	16.0	17.5	17.0	18.0	19.0	17.5	15.0	14.0	11.0	4.1	13.8	29.7	9.7	5.3
29	48.5	WNW	16:29	14.2	10.5	14.0	15.0	16.5	17.0	15.0	14.0	11.0	7.9	13.8	57.5	14.1	6.1
30	46.2	NW	19:29	13.5	14.0	14.5	15.0	16.5	16.5	15.0	14.0	11.0	7.6	13.7	55.5	14.3	8.0
31	44.5	NW	11:34	17.2	14.0	14.5	15.5	16.5	16.5	14.5	14.0	11.0	12.8	13.6	94.0	20.2	3.3
Total													313.2	451.4	69.4	566.1	184.4
Mean				13.3	16.9	17.7	18.5	19.8	18.0	14.9	13.5	10.5	1991-2020 Normal				
Extreme	53.0	WNW	12:17		1971- 2000 Normal for Soil Temperatures								276.9	452.3	61.2	542.2	172.5
Date	25				16.5	16.9	18.1	16.8	14.1	12.3	9.1	No. of Bright Sunshine days = 31					

Note: Red numbers indicate manual calculation; Red cell indicate data not available

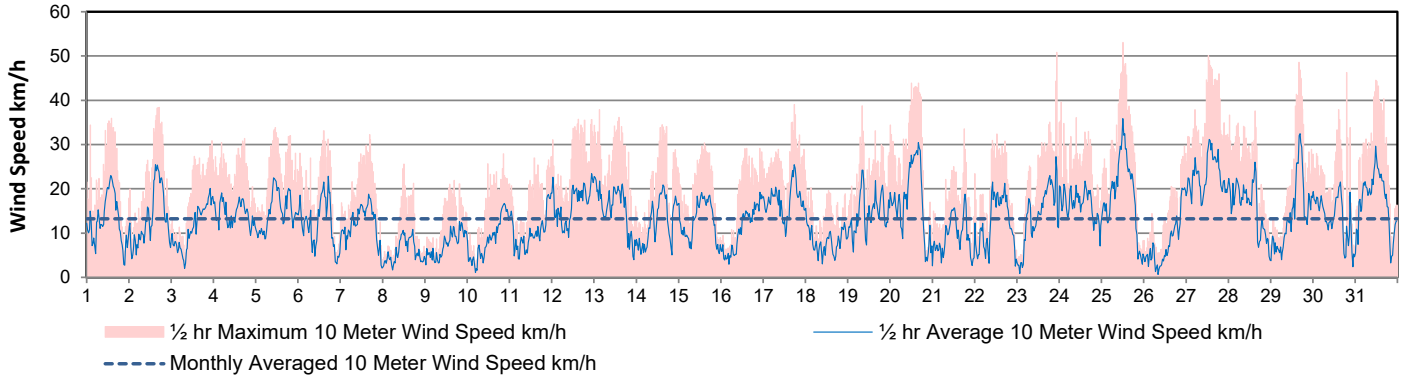
SRC proudly recognizes the following CRS supporters:



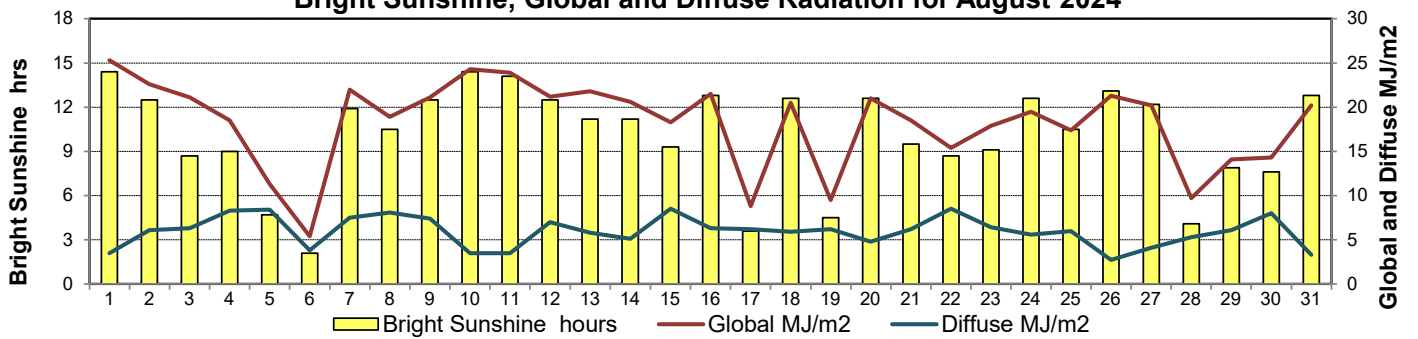
Agriculture and Agri-Food Canada / Agriculture et Agroalimentaire Canada



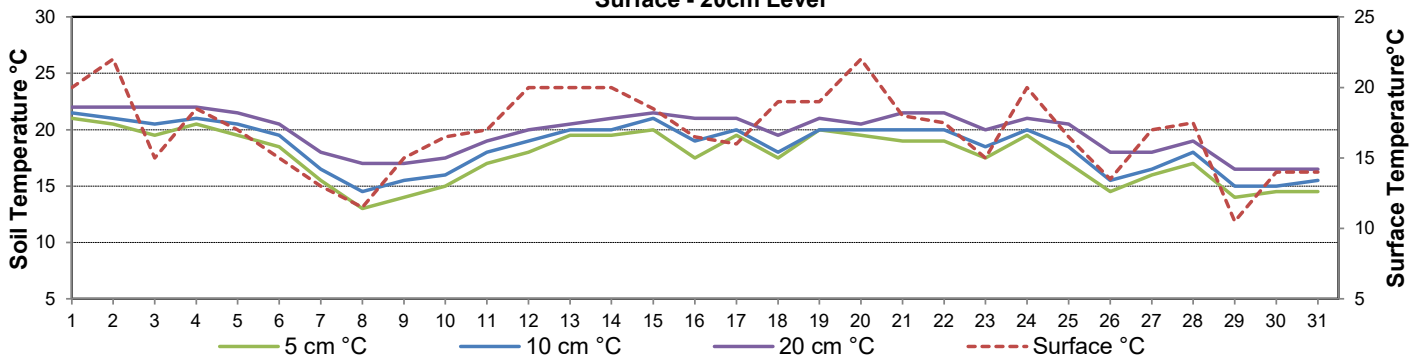
Wind Speed for August 2024



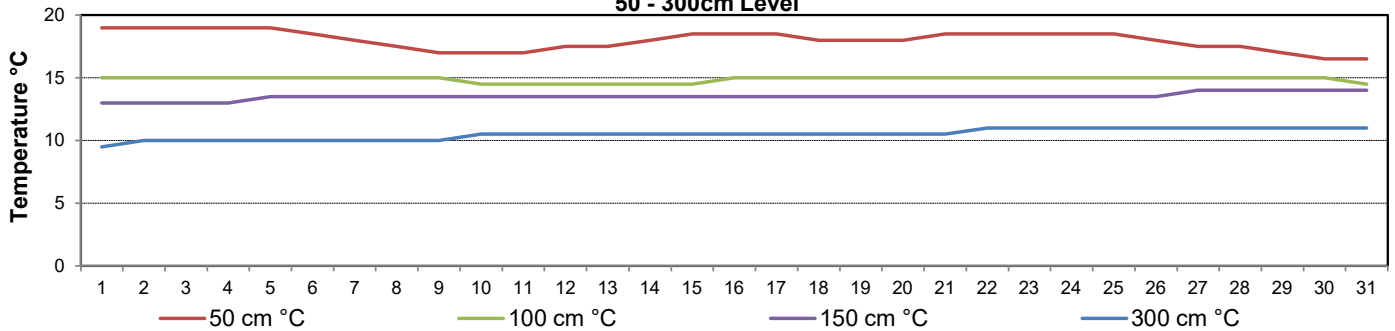
Bright Sunshine, Global and Diffuse Radiation for August 2024



Soil Temperatures for August 2024 Surface - 20cm Level



Soil Temperatures for August 2024 50 - 300cm Level





SRC CLIMATE REFERENCE STATION DAILY DATA REPORT

SASKATOON STATION 4057180

52°09' N 106°36' W 497 m asl Estab. 1963

Preliminary AUGUST 2024

Extreme Records for August

Table with columns: Max/Min Temperature °C, Precipitation - Monthly mm, Wind Monthly km/h, CRS Bright Sunshine - Monthly. Includes data for S'toon Area, Date, Site, CRS, and various weather metrics.

**1975 forward * more than one year

Large table with columns: Notable Events for CRS Saskatoon - August, Saskatoon Area Stations, Glossary. Includes event details like Temperature, Growing Degree-days, and station information like SM NWMP, SE Eby, etc.

SRC proudly recognizes the following CRS supporters:



Agriculture and Agri-Food Canada / Agriculture et Agroalimentaire Canada





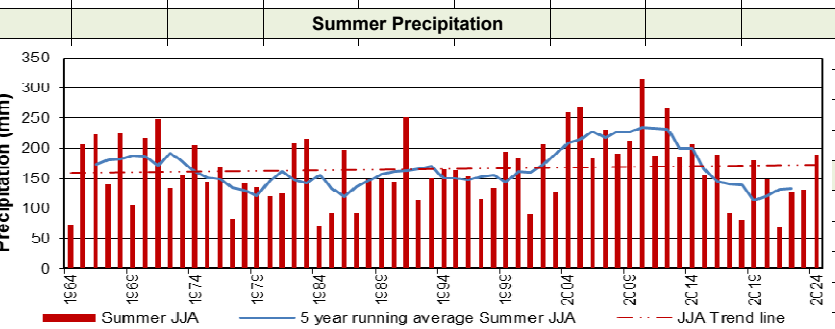
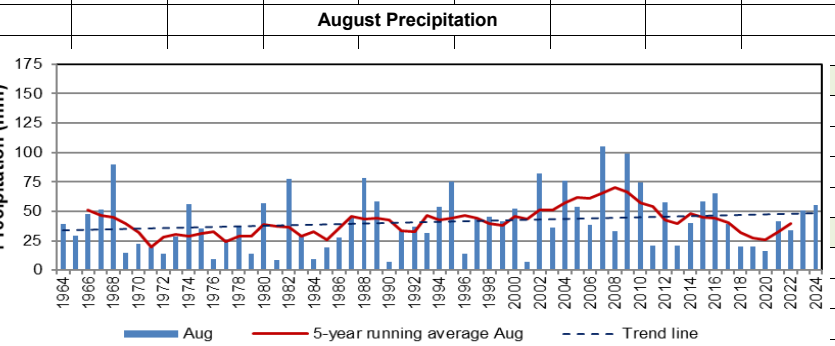
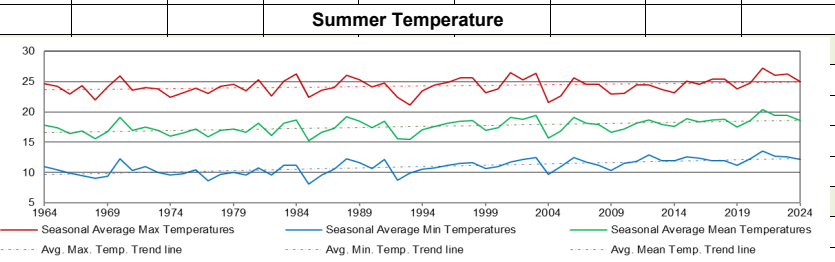
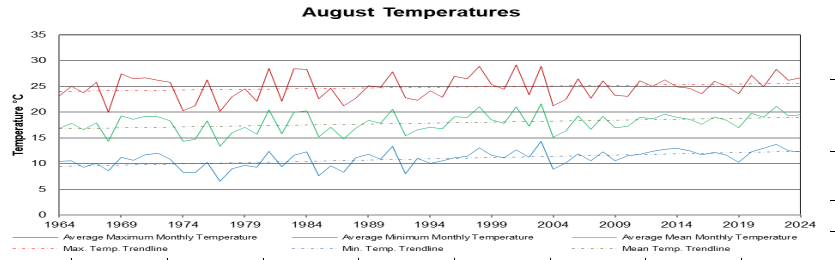
SRC CLIMATE REFERENCE STATION DAILY DATA REPORT

SASKATOON STATION 4057180

52°09' N 106°36' W 497 m asl Estab. 1963

Preliminary August 2024

Day	2 meter Wind Speed			Soil Moisture at 0900 hrs (rounded to the 0.5%)		
	Daily Average	Max ½ hr Avg	½ hr Extreme Max	10 cm	20 cm	50 cm
	km/h	km/h	km/h	% by volume (soil type is Loam (45.5% Sand, 41.1% Silt, 13.3% Clay))		
1	8.0	16.6	26.4	3.0	9.5	11.0
2	8.0	17.8	27.5	2.0	9.0	11.0
3	6.0	14.5	24.1	2.5	9.0	11.0
4	10.0	13.8	24.1	2.5	8.5	10.5
5	9.0	15.5	28.1	2.5	8.5	11.0
6	7.0	15.2	23.5	5.0	8.5	10.5
7	8.0	13.4	31.0	7.0	8.0	11.0
8	3.0	8.8	22.9	6.5	8.5	10.5
9	4.0	9.5	17.2	6.0	8.5	10.5
10	6.0	12.4	28.1	6.0	8.5	10.0
11	7.0	13.8	21.2	5.0	9.0	11.0
12	11.0	16.2	29.8	4.5	8.5	10.5
13	10.0	16.1	29.8	4.0	8.5	10.5
14	7.0	14.9	27.5	3.5	8.5	10.5
15	7.0	14.1	22.9	3.0	8.5	10.5
16	7.0	13.3	24.1	2.0	8.5	10.5
17	13.0	18.3	32.1	2.5	8.5	10.5
18	6.0	10.4	20.6	2.5	8.5	10.5
19	10.0	17.8	29.3	2.5	8.5	10.5
20	12.0	21.6	39.1	3.0	8.5	10.5
21	5.0	13.0	23.5	2.5	8.5	10.5
22	7.0	15.1	24.7	2.0	9.0	10.5
23	10.0	18.8	34.4	2.0	8.0	10.5
24	12.0	16.6	27.5	24.5	8.5	10.5
25	12.0	24.6	37.3	18.0	8.5	11.5
26	5.0	14.8	24.1	16.0	8.5	13.0
27	15.0	19.6	37.3	15.0	8.5	13.5
28	11.0	18.9	27.5	14.5	8.0	13.5
29	9.0	22.1	36.2	15.5	8.5	13.5
30	8.0	15.0	31.6	15.0	8.0	14.0
31	11.0	35.0	35.0	14.5	8.5	13.5
Total						
Mean				7	9	11.2
Extreme	15.0	35.0	39.1	24.5	9.5	14
Date	27	31	20	24	1	30



Note: Red numbers indicate manual calculation; Red cell indicate data not available

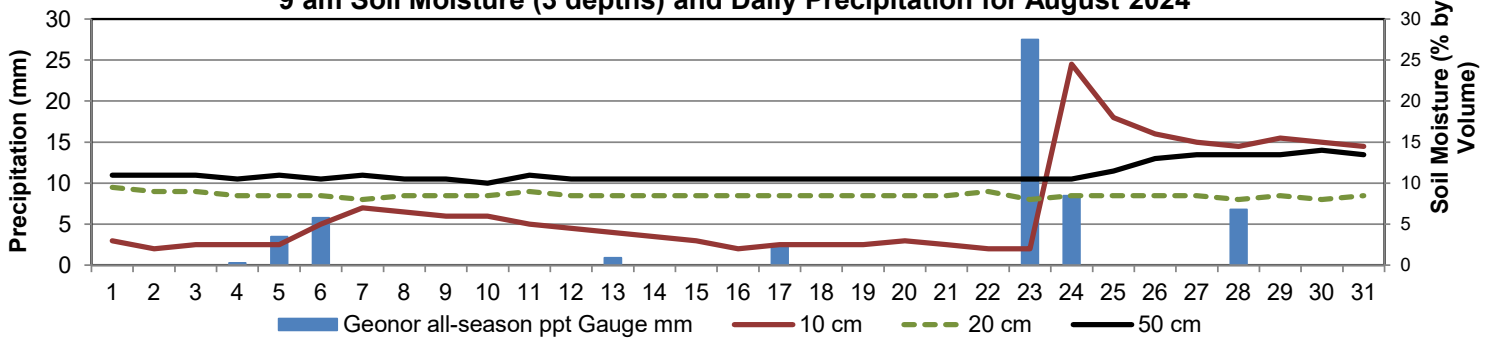
SRC proudly recognizes the following CRS supporters:



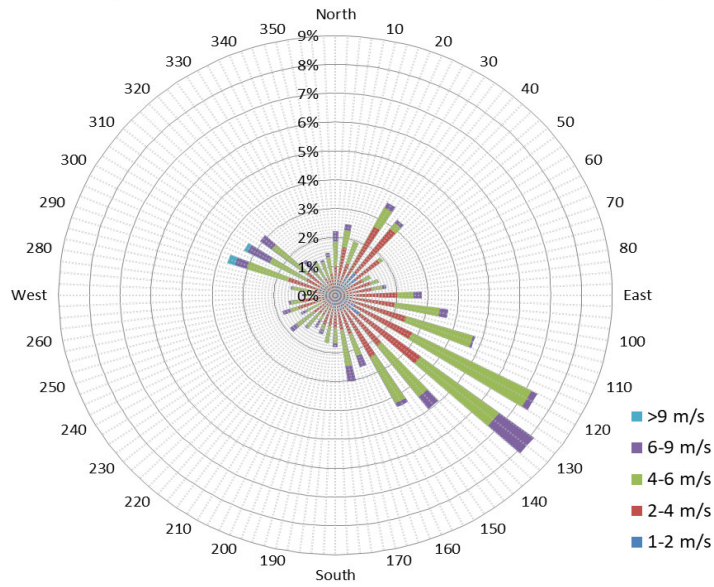
Agriculture and Agri-Food Canada / Agriculture et Agroalimentaire Canada



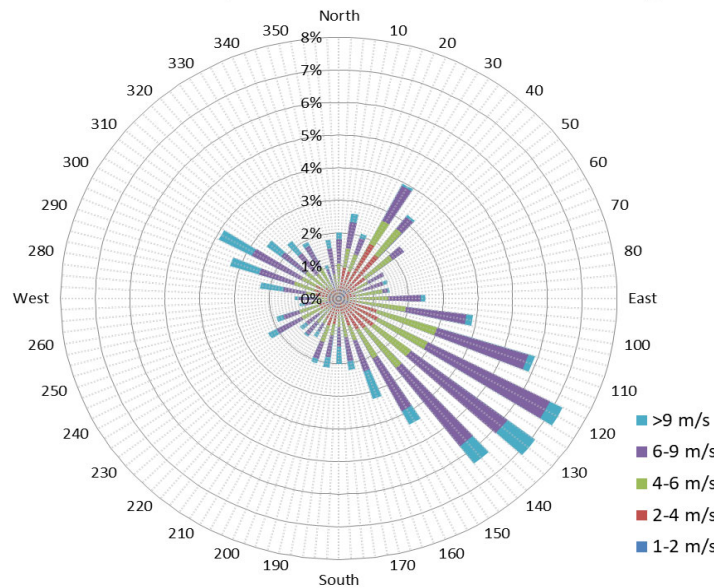
9 am Soil Moisture (3 depths) and Daily Precipitation for August 2024



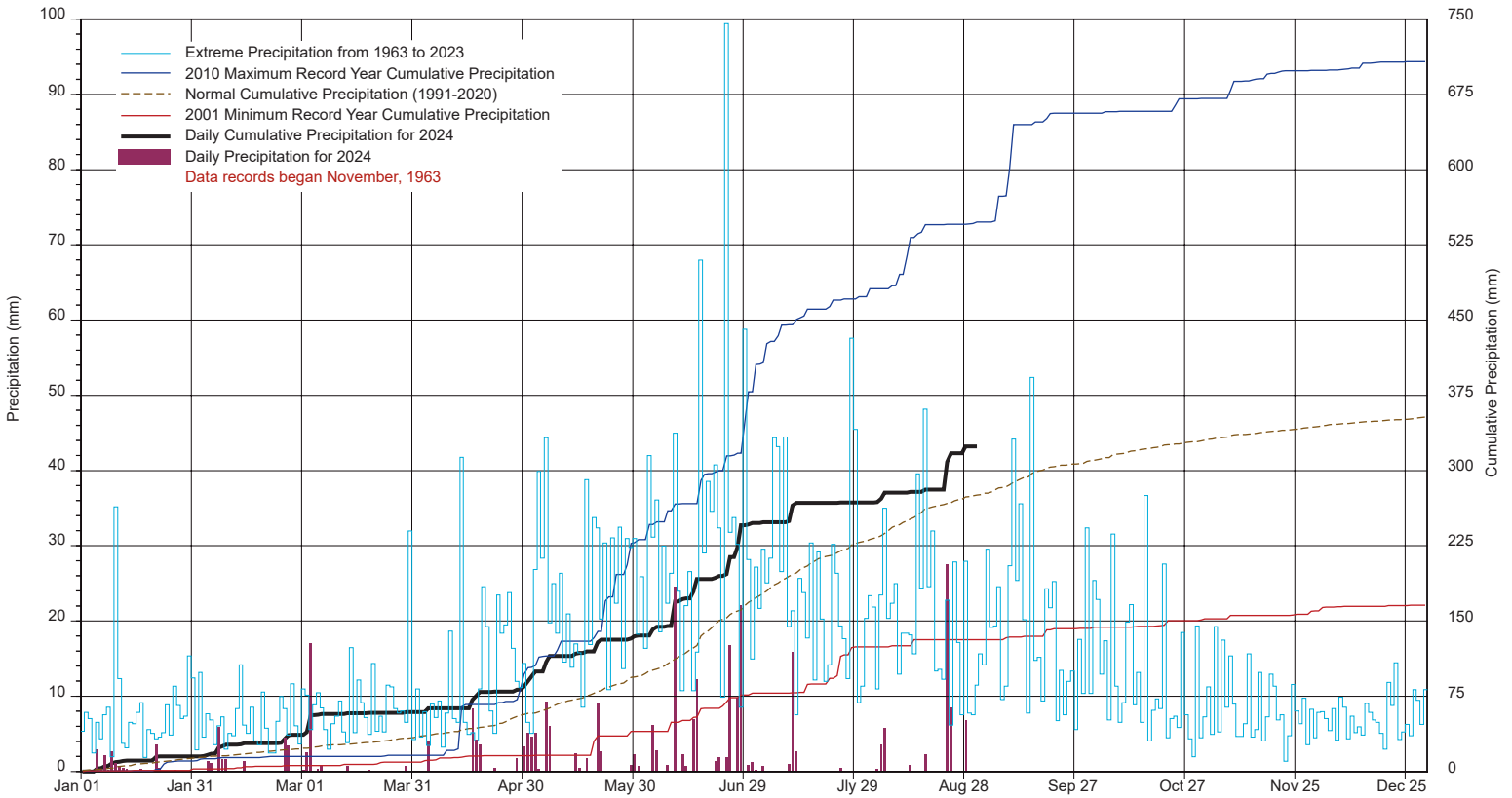
10 minute Average Wind Speed and Direction Saskatoon August 2024



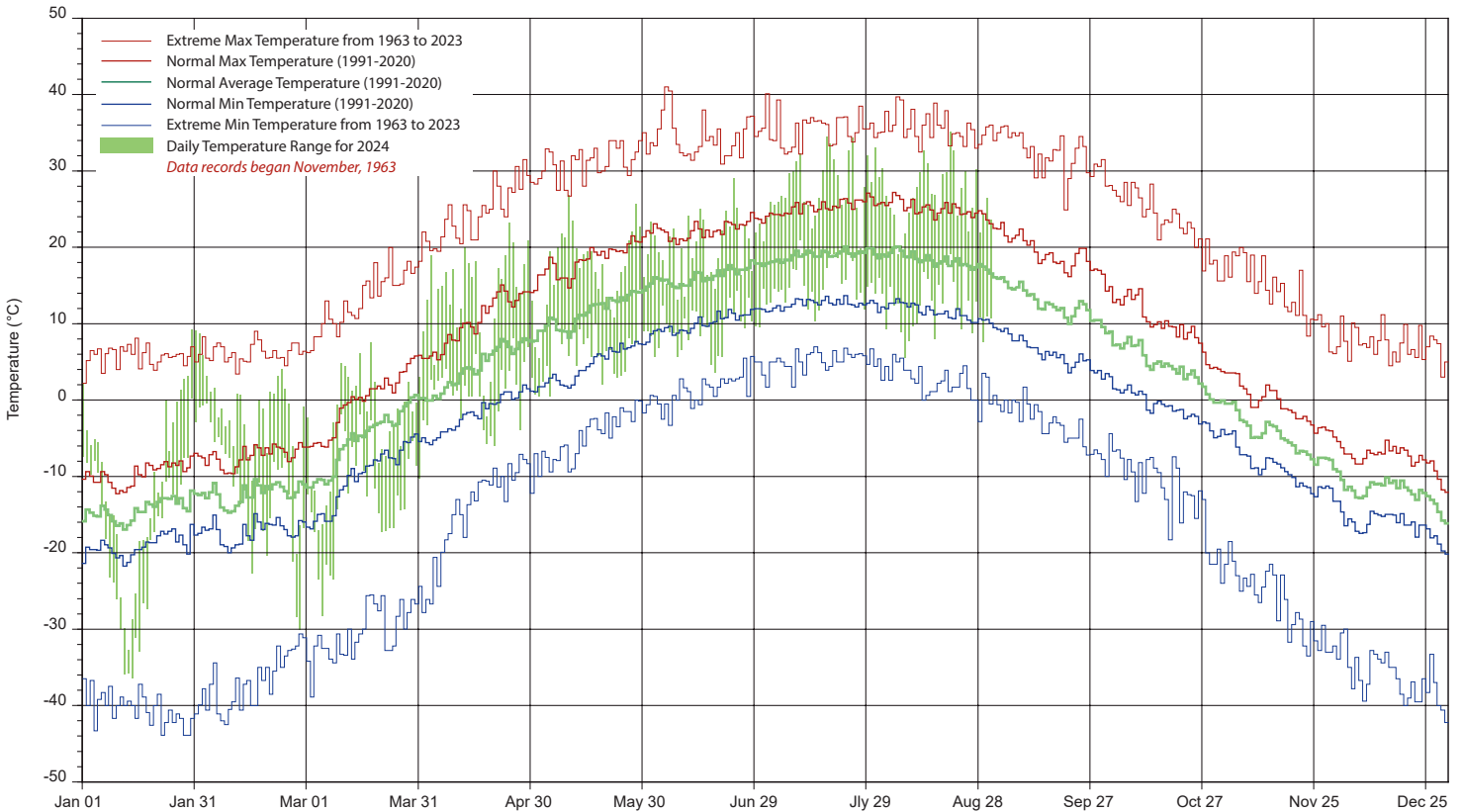
1/2 hr Maximum Wind Speed and Direction Saskatoon August 2024



SASKATCHEWAN RESEARCH COUNCIL SASKATOON CLIMATE REFERENCE STATION 2024 PRECIPITATION AND NORMALS



2024 TEMPERATURES AND NORMALS



SRC proudly recongnizes the following CRS supporters:

