



SRC CLIMATE REFERENCE STATION DAILY DATA REPORT

SASKATOON STATION 4057180

52°09' N 106°36' W 497 m asl Estab. 1963

Preliminary **FEBRUARY 2023**

Day	Temperature						Degree-days			Precipitation			Relative Humidity		Station Pressure (sea level)	
	Max	Normal Max	Min	Normal Min	Mean	Normal Mean	Growing	Heating	Cooling	Weighing Gauge	Notes	Snow-on-Ground 0900h	Max ½ hr Avg	Min ½ hr Avg	Max ½ hr Avg	Min ½ hr Avg
	°C	1991-2020	°C	1991-2020	°C	1991-2020	5°C base	18°C base	18°C base	mm		cm	%	%	mbar	mbar
1	-14.3	-7.3	-26.0	-17.4	-20.2	-12.4	0.0	38.2	0.0	0.1	light snow	15	83	62	1028	1013
2	-19.4	-7.5	-29.7	-16.6	-24.6	-12.1	0.0	42.6	0.0	0.3	light snow	14	74	55	1032	1020
3	-7.6	-8.5	-20.0	-17.0	-13.8	-12.8	0.0	31.8	0.0	0.0		15	79	64	1019	1003
4	-3.1	-7.1	-7.7	-16.8	-5.4	-12.0	0.0	23.4	0.0	2.2	light snow	15	91	78	1009	1003
5	0.2	-6.7	-7.9	-15.0	-3.9	-10.8	0.0	21.9	0.0	0.0		16	92	62	1009	995
6	1.4	-7.7	-4.0	-16.9	-1.3	-12.3	0.0	19.3	0.0	0.1	light freezing rain	17	87	57	1006	995
7	3.6	-9.1	-4.1	-18.9	-0.3	-14.0	0.0	18.3	0.0	0.0		17	86	60	1009	1003
8	-0.7	-9.6	-7.8	-19.1	-4.3	-14.4	0.0	22.3	0.0	0.0		17	88	59	1024	1007
9	-1.5	-9.5	-13.7	-19.9	-7.6	-14.7	0.0	25.6	0.0	0.2		17	86	60	1025	1016
10	4.5	-9.6	-8.9	-19.3	-2.2	-14.5	0.0	20.2	0.0	0.0		17	80	58	1015	1004
11	1.7	-8.7	-4.3	-18.9	-1.3	-13.8	0.0	19.3	0.0	0.0		17	76	61	1011	1007
12	2.4	-7.8	-5.1	-18.8	-1.4	-13.3	0.0	19.4	0.0	0.0		17	75	51	1009	999
13	3.7	-6.0	-2.4	-16.2	0.7	-11.1	0.0	17.3	0.0	0.0		17	82	62	998	988
14	-0.5	-7.8	-15.6	-17.7	-8.1	-12.7	0.0	26.1	0.0	0.0		16	81	61	1017	994
15	-11.5	-7.2	-19.0	-18.3	-15.3	-12.7	0.0	33.3	0.0	0.1	light snow	16	85	67	1021	1016
16	-4.8	-5.8	-20.9	-14.8	-12.9	-10.3	0.0	30.9	0.0	0.2	light snow	16	80	68	1021	1004
17	-2.3	-6.2	-8.9	-15.9	-5.6	-11.1	0.0	23.6	0.0	0.0		17	83	65	1018	1003
18	-5.5	-7.2	-13.4	-16.9	-9.5	-12.1	0.0	27.5	0.0	0.1		16	84	68	1013	1004
19	-11.1	-6.2	-14.5	-16.1	-12.8	-11.2	0.0	30.8	0.0	2.0	light snow	16	87	68	1013	1000
20	-14.3	-7.0	-23.1	-16.2	-18.7	-11.6	0.0	36.7	0.0	0.0		17	82	69	1014	1003
21	-21.1	-5.7	-28.8	-16.3	-25.0	-11.0	0.0	43.0	0.0	0.0		17	78	60	1022	1007
22	-24.8	-6.1	-32.2	-15.3	-28.5	-10.7	0.0	46.5	0.0	0.0		16	72	57	1032	1023
23	-19.6	-6.3	-31.3	-16.4	-25.5	-11.3	0.0	43.5	0.0	0.0		16	72	51	1034	1031
24	-19.0	-6.8	-27.5	-16.9	-23.3	-11.9	0.0	41.3	0.0	0.1		16	77	61	1034	1010
25	-13.0	-8.0	-26.6	-17.7	-19.8	-12.8	0.0	37.8	0.0	0.0		16	77	62	1009	1004
26	-8.5	-7.5	-17.4	-17.9	-13.0	-12.7	0.0	31.0	0.0	0.0		16	84	67	1004	989
27	-7.8	-6.4	-16.1	-17.7	-12.0	-12.0	0.0	30.0	0.0	0.5	light snow	17	85	70	1003	990
28	-10.8	-5.5	-21.5	-15.7	-16.2	-10.6	0.0	34.2	0.0	0.0		15	85	68	1014	1003
Total							0.0	835.8	0.0	5.9			Extreme / Date	Extreme / Date	Extreme / Date	Extreme / Date
Avg	-7.3	-7.3	-16.4	-17.2	-11.9	-12.2	1991-2020 Normal			9.1	1991-2020 Normal					
Extreme Date	4.5		-32.2				0.0	853.6	0.0	12.3	Year to date 2023 Cumulative		92	51	1034	988
	10		22							22.3	Year to date Cumulative Normal		5	12	23	13

Note: Red numbers indicate manual calculation; Red cell indicate data not available

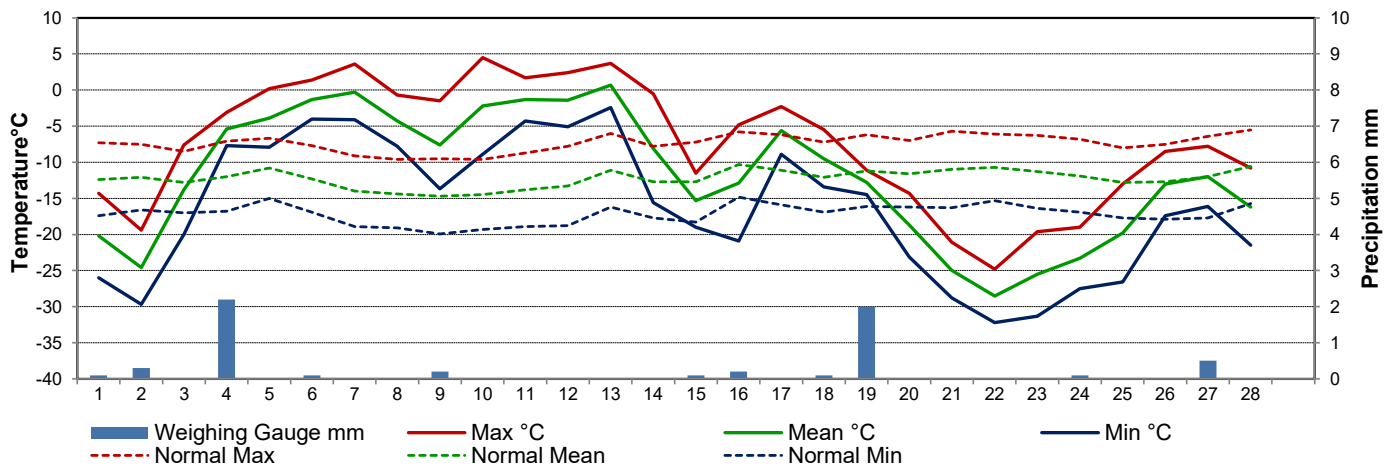
SRC proudly recognizes the following CRS supporters:



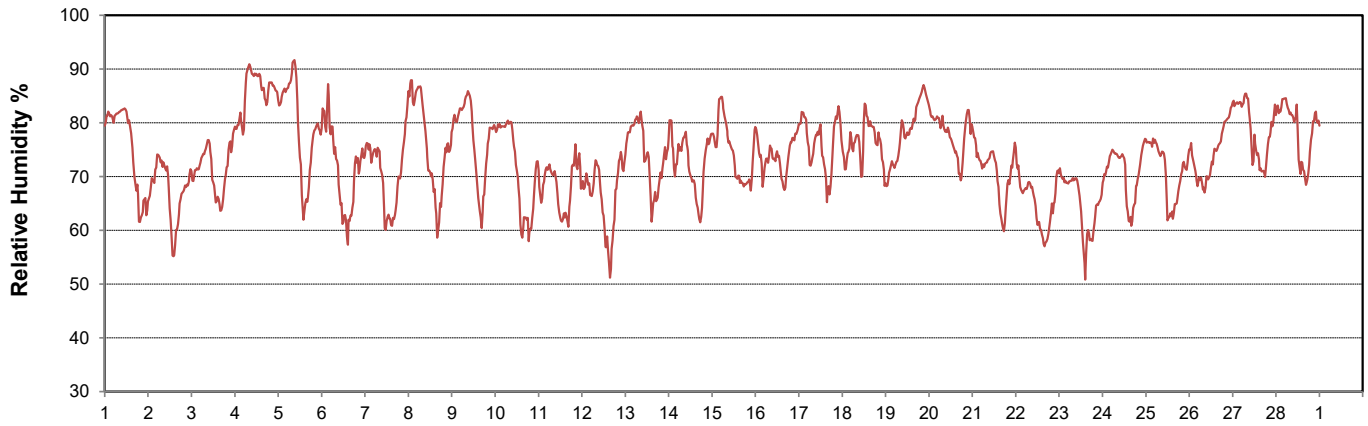
Agriculture and Agri-Food Canada / Agriculture et Agroalimentaire Canada



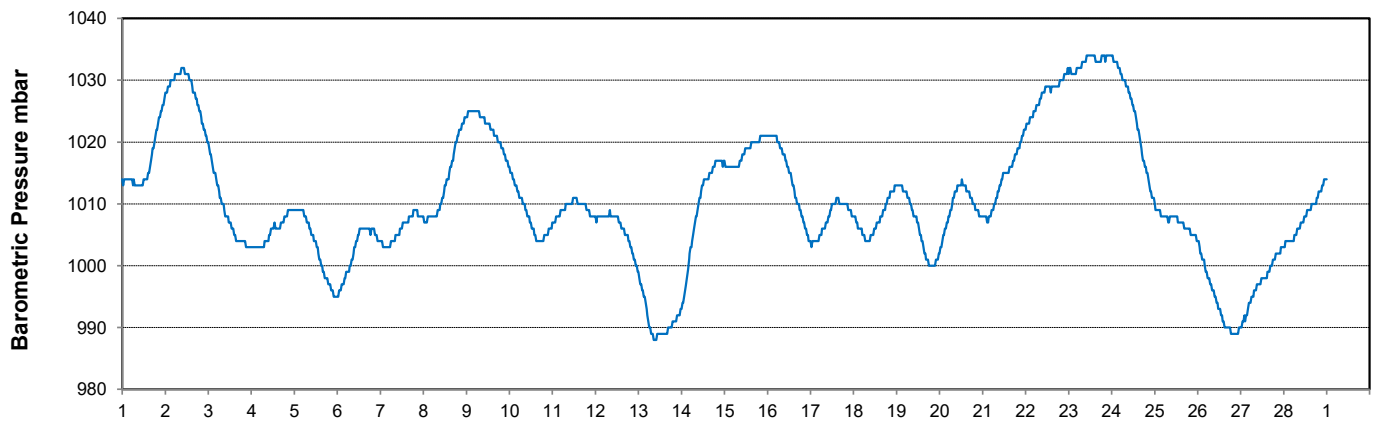
Temperature and Precipitation for February 2023



Relative Humidity for February 2023



Barometric Pressure Corrected to Sea Level for February 2023





SRC CLIMATE REFERENCE STATION DAILY DATA REPORT

SASKATOON STATION 4057180

52°09' N 106°36' W 497 m asl Estab. 1963

Preliminary **FEBRUARY 2023**

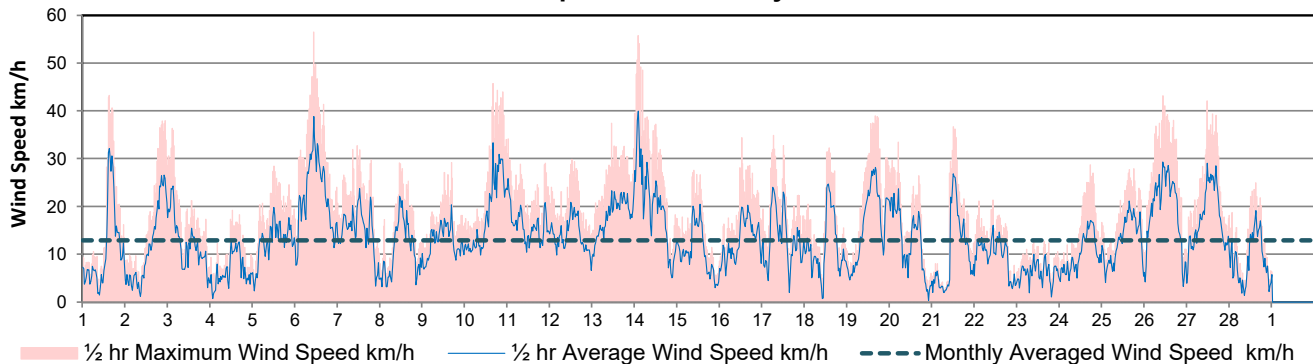
Day	Wind Gust			Wind Speed (10 meters) Daily Average	Soil Temperatures at 0900hrs								Radiation				
	Max	Direction	Time		Surface	5 cm	10 cm	20 cm	50 cm	100 cm	150 cm	300 cm	Bright Sunshine	Possible	% Possible	Global	Diffuse
	km/h				°C	°C	°C	°C	°C	°C	°C	°C	hours	hours		MJ/m ²	MJ/m ²
1	43.2	NNE	14:42	11.0	-16.5	-3.0	-2.5	-1.5	0.5	3.0	4.0	5.5	0.0	9.1	0.0	3.1	3.1
2	37.9	SE	22:06	11.5	-30.5	-3.5	-3.0	-2.0	0.5	3.0	4.0	5.5	7.5	9.2	81.8	6.5	3.1
3	36.3	SE	2:29	12.1	-18.0	-4.5	-3.5	-2.5	0.0	2.5	4.0	5.5	5.2	9.2	56.3	5.8	3.7
4	19.2	SE	12:23	6.6	-6.0	-4.5	-4.0	-3.0	0.0	2.5	3.5	5.5	1.3	9.3	14.0	4.2	3.7
5	28.4	SSW	11:30	12.6	-8.0	-4.0	-3.5	-3.0	-0.5	2.5	3.5	5.5	7.8	9.4	83.4	7.2	2.5
6	56.5	NW	10:26	22.6	-2.0	-3.5	-3.0	-2.5	-0.5	2.5	3.5	5.5	8.7	9.4	92.5	7.5	1.5
7	32.7	WSW	10:56	14.8	-3.0	-3.0	-2.5	-2.0	-0.5	2.5	3.5	5.5	7.6	9.5	80.3	6.8	2.2
8	29.1	NNE	10:36	11.0	-4.0	-2.5	-2.0	-2.0	0.0	2.5	3.5	5.5	1.0	9.5	10.5	5.2	4.9
9	29.1	SW	16:26	12.6	-14.5	-2.0	-2.0	-1.5	0.0	2.5	3.5	5.5	9.3	9.6	97.0	8.6	2.4
10	45.7	WSW	15:56	18.5	-9.5	-2.5	-2.0	-1.5	0.0	2.5	3.5	5.5	8.7	9.7	90.1	7.0	4.0
11	34.1	WSW	0:03	16.0	-6.0	-2.0	-2.0	-1.5	0.0	2.5	3.5	5.5	9.4	9.7	96.7	7.5	1.6
12	29.8	W	23:40	14.0	-7.5	-2.0	-1.5	-1.5	0.0	2.5	3.5	5.5	8.4	9.8	85.9	7.6	1.7
13	39.5	NW	12:09	18.4	-2.0	-1.5	-1.5	-1.0	0.5	2.5	3.5	5.5	8.3	9.9	84.3	7.7	2.5
14	55.8	N	1:31	20.0	-16.0	-1.5	-1.0	-1.0	0.5	2.5	3.5	5.5	9.6	9.9	96.9	8.3	1.8
15	27.5	NNE	9:20	10.5	-13.5	-1.5	-1.0	-1.0	0.5	2.5	3.5	5.0	0.0	10.0	0.0	4.0	4.1
16	34.4	SSW	12:24	12.9	-21.0	-2.0	-1.5	-1.0	0.5	2.5	3.5	5.0	8.7	10.0	86.7	7.7	4.4
17	34.8	NW	6:22	13.3	-5.0	-2.5	-2.0	-1.5	0.5	2.5	3.5	5.0	2.7	10.1	26.7	5.5	4.9
18	32.3	NE	13:36	11.4	-9.5	-2.0	-1.5	-1.5	0.5	2.5	3.5	5.0	0.0	10.2	0.0	5.0	5.0
19	39.0	SE	15:47	16.5	-14.0	-2.0	-1.5	-1.5	0.5	2.5	3.5	5.0	1.3	10.2	12.7	6.4	6.0
20	33.4	N	4:34	12.4	-19.5	-2.5	-2.0	-1.5	0.5	2.5	3.5	5.0	7.5	10.3	72.8	8.2	6.0
21	36.7	N	11:44	10.5	-24.0	-2.5	-2.0	-1.5	0.5	2.5	3.5	5.0	9.3	10.4	89.8	11.5	3.5
22	21.3	NNE	10:07	9.8	-27.5	-3.5	-2.5	-2.0	0.0	2.5	3.5	5.0	9.5	10.4	91.1	12.4	3.6
23	12.8	NNE	9:15	6.2	-25.5	-4.0	-3.5	-2.5	0.0	2.5	3.5	5.0	6.3	10.5	60.1	8.5	6.6
24	28.7	SSE	17:25	10.1	-27.5	-5.0	-4.0	-3.0	-0.5	2.5	3.5	5.0	8.1	10.6	76.7	9.3	5.6
25	27.9	WSW	17:48	12.8	-24.5	-5.5	-4.5	-3.5	-0.5	2.0	3.0	5.0	8.5	10.6	80.0	10.9	3.8
26	43.1	SE	10:11	19.2	-13.0	-5.5	-5.0	-4.0	-1.0	2.0	3.0	5.0	4.2	10.7	39.3	8.5	6.6
27	42.0	WNW	11:24	17.7	-12.0	-5.5	-5.0	-4.0	-1.0	2.0	3.0	5.0	9.4	10.8	87.4	10.9	3.8
28	24.9	NE	14:43	8.8	-16.0	-5.0	-4.5	-4.0	-1.5	2.0	3.0	5.0	10.0	10.8	92.3	12.4	3.6
Total													178.3	278.6	64.0	214.2	106.2
Mean				13.3	-14.1	-3.2	-2.7	-2.1	0.0	2.5	3.5	5.3	1991-2020 Normal				
Extreme	56.5	NW	10:26		1971- 2000 Normal for Soil Temperatures								139.6	281.6	49.6	209.1	100.9
Date	6				-7.0	-6.7	-6.1	-3.5	-0.8	0.8	3.4	No. of Bright Sunshine days = 25					

Note: Red numbers indicate manual calculation; Red cell indicate data not available

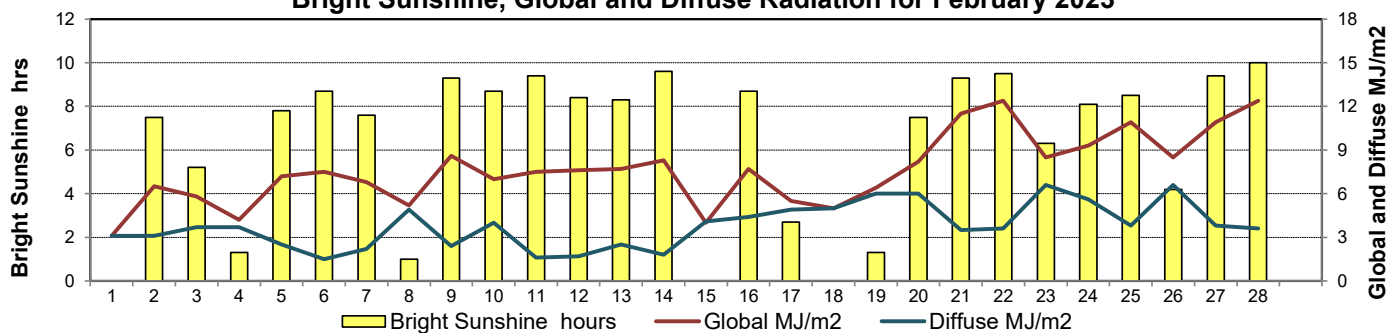
SRC proudly recognizes the following CRS supporters:



Wind Speed for February 2023

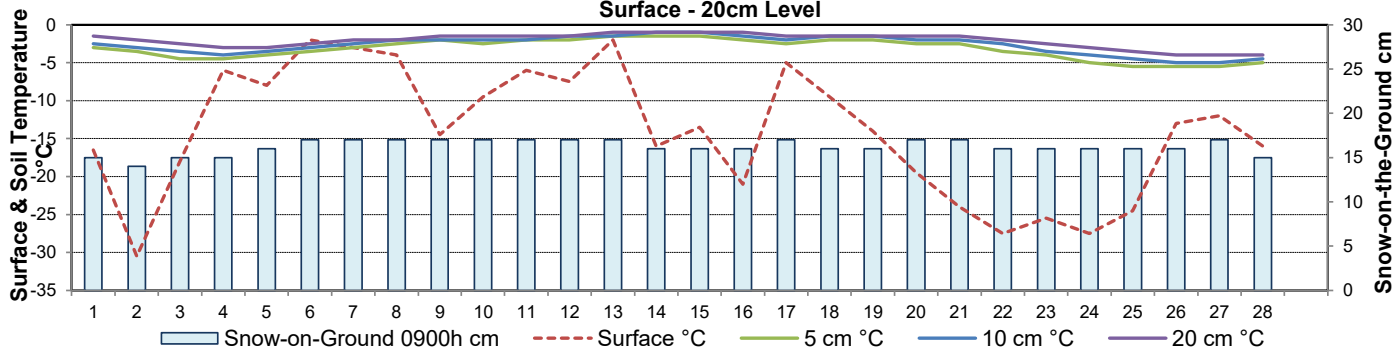


Bright Sunshine, Global and Diffuse Radiation for February 2023



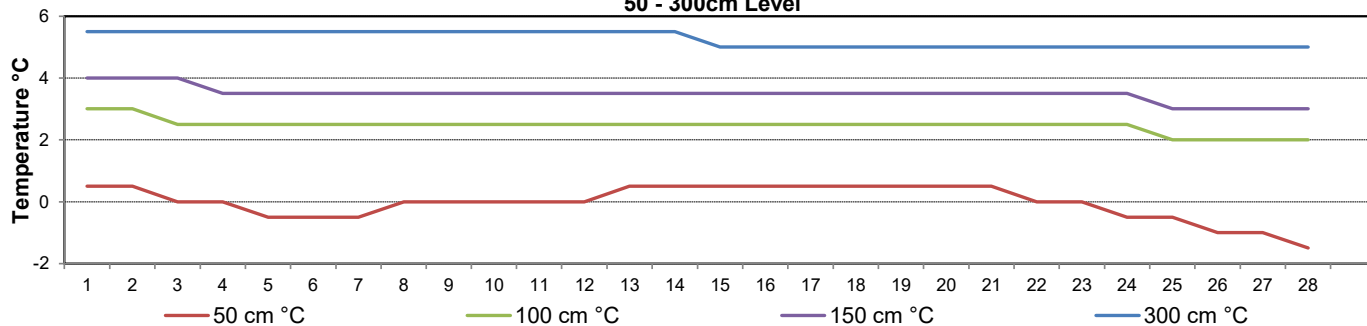
Soil Temperatures for February 2023

Surface - 20cm Level



Soil Temperatures for February 2023

50 - 300cm Level





SRC CLIMATE REFERENCE STATION DAILY DATA REPORT

SASKATOON STATION 4057180

52°09' N 106°36' W 497 m asl Estab. 1963

Preliminary **FEBRUARY 2023**

Extreme Records for February

Max/Min Temperature °C				Precipitation - Monthly mm				Wind Monthly km/h				CRS Bright Sunshine - Monthly			
S'toon Area	Date	Site	S'toon CRS Date	S'toon Area	Date	Site	S'toon CRS Date	S'toon Airport	Date	S'toon CRS**	Date	Hours	Year	No. of Days	Year
12.8	19/1931	SE	9.0 16/2017	43.7	1924	SE	40.2 1979	106 ^N	22/1988	82.3 ^{NNW}	10/2004	191.5	2021	28	1978,84, 2021
-50.0	01/1893	SM	-41.1 06/1972	0.0	multiply sites		1.7 2021					57.6	1983	17	1983&98

**1975 forward * more than one year

Notable Events for CRS Saskatoon - February						Saskatoon Area Stations			Glossary	
Element	Type	Day	New Record	Old Record	Year	Station	Operational Period	Code	Description	
Temperature	Lowest Maximum Daily	22	-24.8	-23.3	1965	SM	NWMP c. 1892-1901	T	Trace of precipitation	
	Lowest Minimum Daily	22	-32.2	-32.2	2003	SE	Eby 1901-1941	Normal	30 year average beginning with the decade	
	Lowest Mean Daily	22	-28.5	-26.7	1965	US	Univ. of Sask. 1915-1964	SOG	Depth of snow-on-the-ground in cm	
						S	Saskatoon 1941-1942	na	not available	
						SA	Saskatoon A 1942 -	Degree-days		
						NRC	Nat. Res. Council 1952-1966	Tm	Mean Temperature	
						SRC	Sask. Res. Council 1963-	Growing	(Tm-5°C); if Tm ≤ 5°C then GDD = 0	
						SWT	S'toon Water Treatment Plant 1974 -	Heating	(18°C-Tm); if Tm ≤ 18°C then HDD = 0	
						SC	S'toon Central Ave 1974-1989	Cooling	(Tm-18°C); if Tm ≥ 18°C then CDD = 0	
						S1	Saskatoon 1 1976-1978	Extreme Cooling	(Tm-24°C); if Tm ≥ 24°C then CDD = 0	
						S2	Saskatoon 2 1977-1990	Feb 28 - Auto Diffuse Ring Actuators replaced		
						K	S'toon Kernen Farm 1993-2004			
						KCS	S'toon Kernen Farm CS 1996-			
						RCS	Environment Canada 2008-			
						SF	Sutherland Forestry 1943-1970			

SRC proudly recognizes the following CRS supporters:





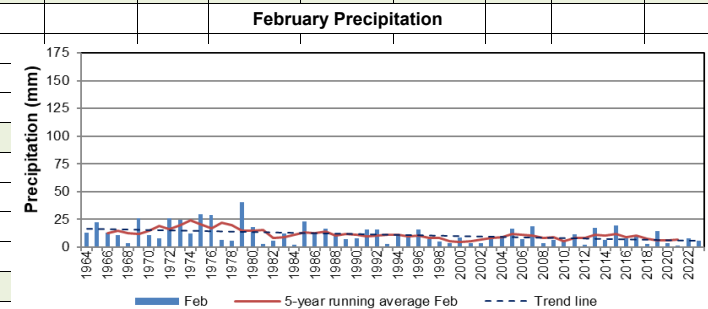
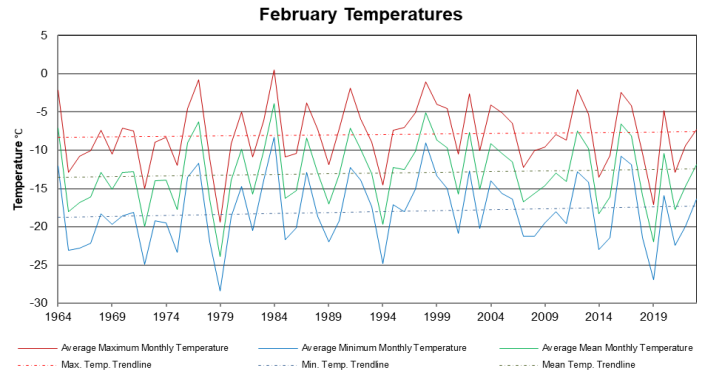
SRC CLIMATE REFERENCE STATION DAILY DATA REPORT

SASKATOON STATION 4057180

52°09' N 106°36' W 497 m asl Estab. 1963

Preliminary February 2023

Day	2 meter Wind Speed			Soil Moisture at 0900 hrs (rounded to the 0.5%)		
	Daily Average	Max ½ hr Avg	½ hr Extreme Max	10 cm	20 cm	50 cm
	km/h	km/h	km/h	% by volume (soil type is Loam (45.5% Sand, 41.1% Silt, 13.3% Clay))		
1	7.0	25.0	35.0	1.0	6.0	7.5
2	9.0	21.5	35.0	1.0	6.0	7.0
3	9.0	17.9	31.6	0.5	6.0	7.0
4	4.0	10.8	16.6	1.0	6.5	7.0
5	8.0	15.4	25.2	1.5	6.0	7.0
6	19.0	31.3	48.3	1.5	6.5	7.0
7	13.0	21.3	29.3	1.5	6.0	7.0
8	8.0	17.2	24.7	2.0	6.0	7.5
9	10.0	18.6	25.8	2.0	6.0	7.5
10	15.0	29.1	41.9	1.5	6.0	7.5
11	14.0	22.1	28.7	1.5	6.0	7.5
12	12.0	17.9	27.0	1.5	6.0	7.5
13	15.0	22.4	31.0	1.5	6.0	7.5
14	16.0	32.7	49.4	2.5	6.0	7.0
15	9.0	16.5	22.4	1.5	6.5	8.0
16	9.0	15.4	29.3	1.5	6.0	7.0
17	11.0	19.7	28.7	1.5	6.0	7.5
18	9.0	20.7	29.3	2.0	6.0	7.5
19	14.0	22.1	33.9	2.0	6.5	7.5
20	10.0	18.8	25.8	1.5	6.0	7.5
21	7.0	20.9	28.1	1.5	6.0	7.5
22	8.0	12.9	17.2	1.0	6.0	7.5
23	5.0	9.3	12.0	1.5	5.5	7.5
24	6.0	10.8	21.8	1.0	6.0	7.0
25	11.0	19.7	25.8	1.0	5.5	7.0
26	15.0	25.2	40.2	1.0	5.5	7.0
27	15.0	23.8	36.2	1.0	6.0	7.0
28	6.0	16.0	21.8	1.0	6.0	7.0
29						
30						
31						
Total						
Mean				1	6	7.3
Extreme	19.0	32.7	49.4	2.5	6.5	8
Date	6	14	14	14	4	15

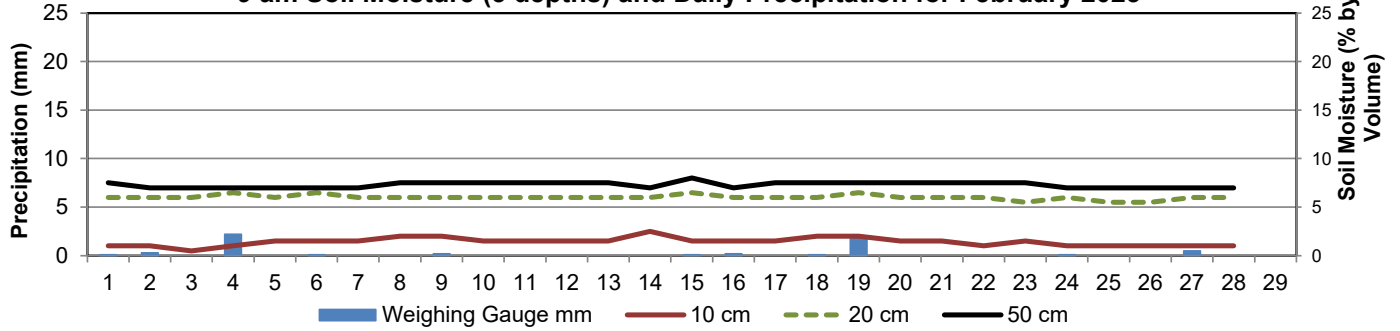


Note: Red numbers indicate manual calculation; Red cell indicate data not available

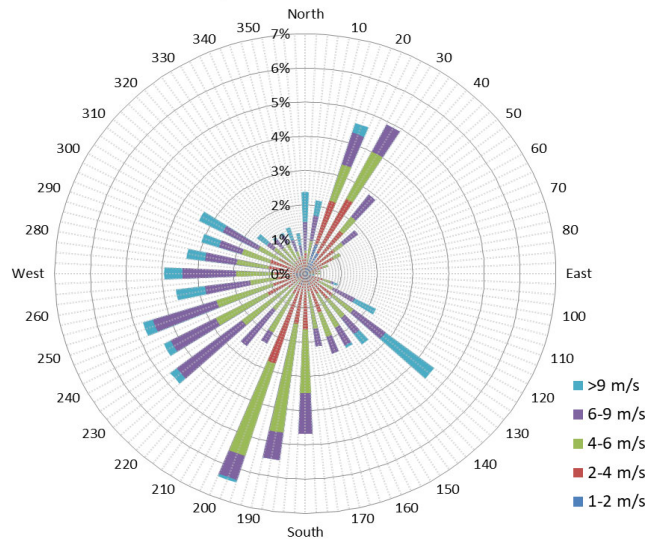
SRC proudly recognizes the following CRS supporters:



9 am Soil Moisture (3 depths) and Daily Precipitation for February 2023



1/2 hr Maximum Wind Speed and Direction Saskatoon Feb 2023



10 minute Average Wind Speed and Direction Saskatoon Feb 2023

