



SRC CLIMATE REFERENCE STATION DAILY DATA REPORT

SASKATOON STATION 4057180

52°09' N 106°36' W 497 m asl Estab. 1963

Preliminary FEBRUARY 2025

Table with columns: Day, Temperature (Max, Normal Max, Min, Normal Min, Mean, Normal Mean), Degree-days (Growing, Heating, Cooling), Precipitation (Geonor all-season ppt Gauge, Notes, Snow-on-Ground 0900h), Relative Humidity (Max 1/2 hr Avg, Min 1/2 hr Avg), Station Pressure (Max 1/2 hr Avg, Min 1/2 hr Avg). Rows 1-28 and summary rows.

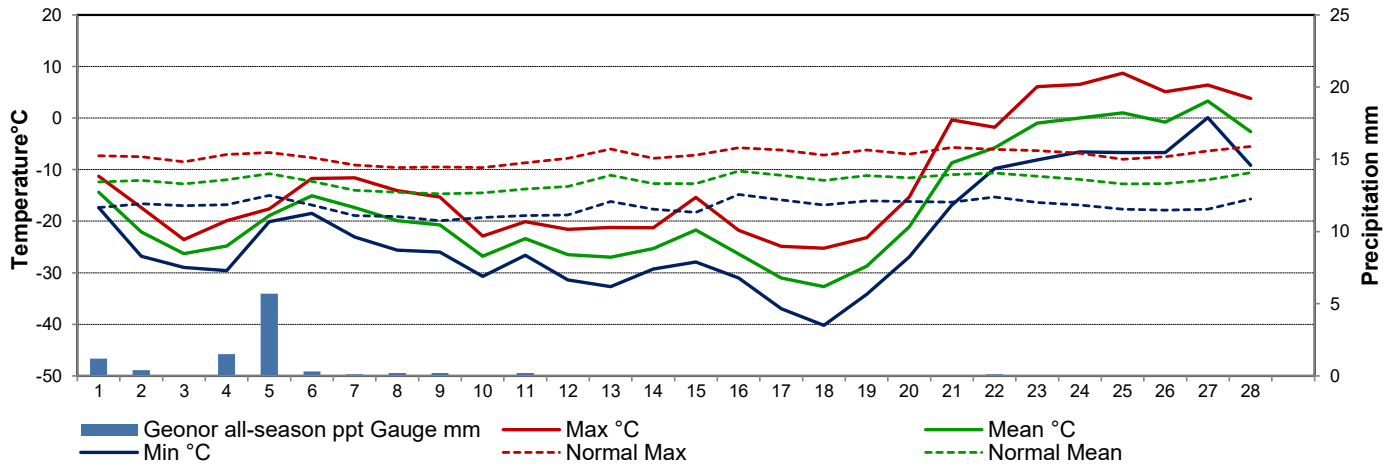
Note: Red numbers indicate manual calculation; Red cell indicate data not available

Precipitation is measured precipitation. It has not been corrected for wind speed.

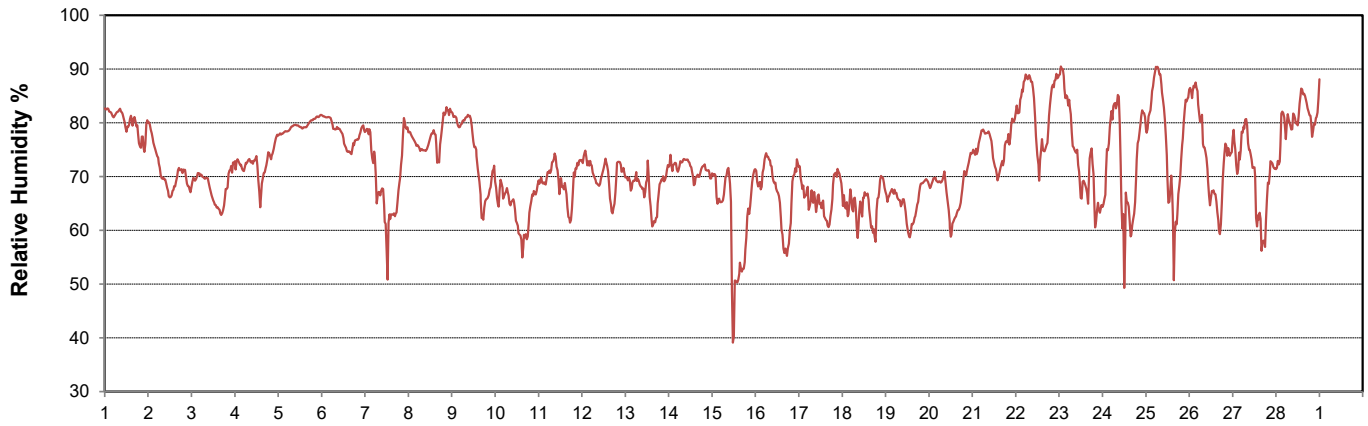
SRC proudly recognizes the following CRS supporters:



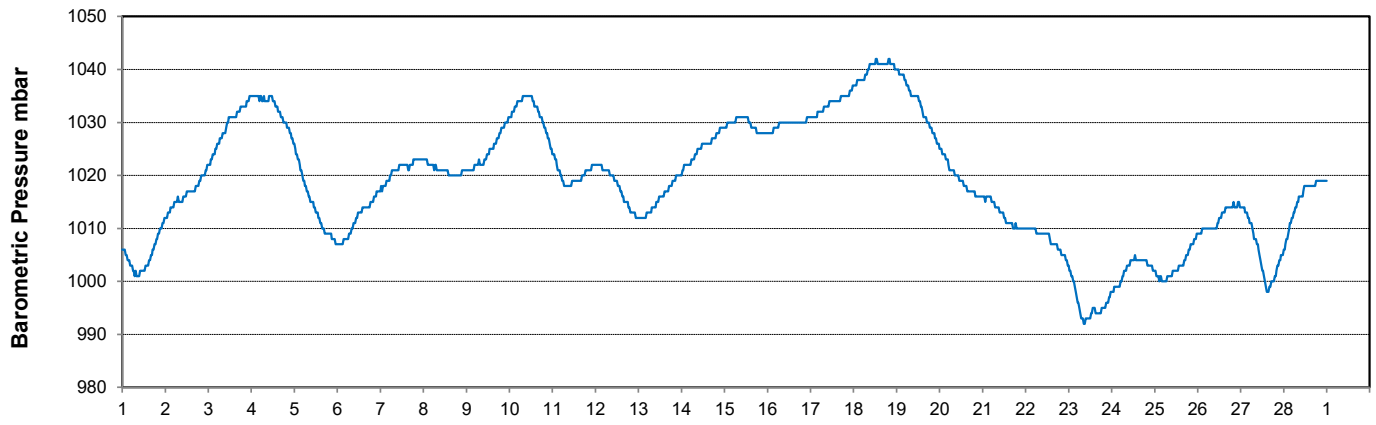
Temperature and Precipitation for February 2025



Relative Humidity for February 2025



Barometric Pressure Corrected to Sea Level for February 2025





SRC CLIMATE REFERENCE STATION DAILY DATA REPORT

SASKATOON STATION 4057180

52°09' N 106°36' W 497 m asl Estab. 1963

Preliminary **FEBRUARY 2025**

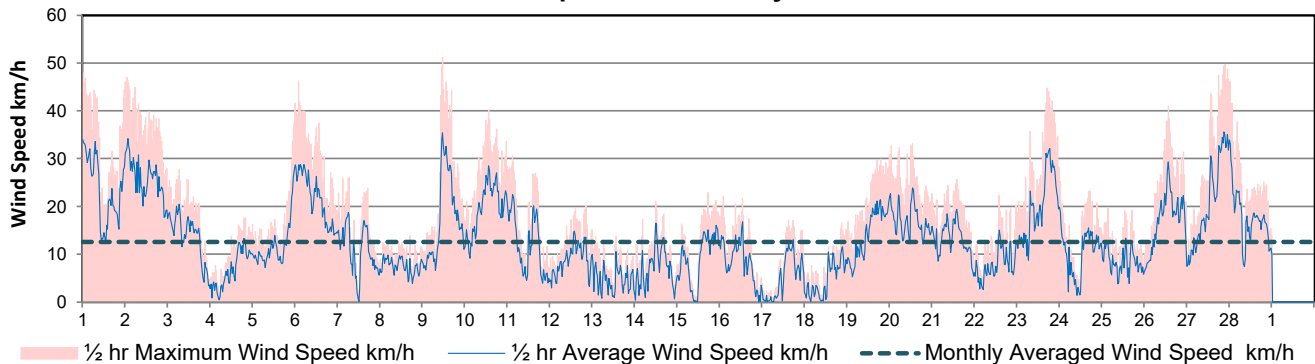
Day	Wind Gust			Wind Speed (10 meters) Daily Average	Soil Temperatures at 0900hrs								Radiation				
	Max	Direction	Time		Surface	5 cm	10 cm	20 cm	50 cm	100 cm	150 cm	300 cm	Bright Sunshine	Possible	% Possible	Global	Diffuse
	km/h				°C	°C	°C	°C	°C	°C	°C	°C	hours	hours		MJ/m ²	MJ/m ²
1	48.1	ESE	0:21	23.7	-8.0	-1.5	-1.0	-1.0	1.0	3.0	4.5	6.0	0.0	9.2	0.0	3.2	3.2
2	47.0	WNW	0:50	25.6	-22.5	-1.5	-1.5	-1.0	1.0	3.0	4.5	6.0	4.6	9.2	50.0	5.9	3.3
3	27.7	NW	6:10	13.4	-22.5	-2.0	-1.5	-1.0	1.0	3.0	4.5	6.0	8.9	9.3	96.1	8.4	1.7
4	17.6	NE	18:57	6.8	-14.0	-2.0	-1.5	-1.0	1.0	3.0	4.5	6.0	0.0	9.3	0.0	4.2	4.1
5	41.6	WNW	23:33	12.2	-9.5	-2.5	-2.0	-1.5	0.5	3.0	4.5	6.0	0.0	9.4	0.0	3.7	3.8
6	46.2	WNW	1:32	21.4	-15.0	-2.5	-2.0	-1.5	0.5	3.0	4.0	6.0	6.5	9.4	68.9	7.2	3.1
7	26.1	NNE	6:03	10.6	-10.0	-2.5	-2.0	-2.0	0.5	3.0	4.0	6.0	5.6	9.5	58.9	6.2	4.3
8	13.9	NNW	16:39	7.5	-11.0	-2.5	-2.0	-4.0	0.5	3.0	4.0	6.0	4.0	9.6	41.8	6.5	3.8
9	51.2	NW	11:12	17.5	-12.0	-2.5	-2.0	-2.0	0.5	3.0	4.0	6.0	5.1	9.6	53.0	7.2	3.6
10	40.1	WNW	13:17	19.8	-20.5	-3.0	-2.5	-2.0	0.0	3.0	4.0	6.0	8.6	9.7	88.8	9.4	2.2
11	30.6	SW	2:51	11.7	-13.0	-3.0	-2.5	-2.0	0.0	3.0	4.0	6.0	8.5	9.8	87.2	8.7	2.1
12	20.2	SSE	1:52	8.9	-13.5	-3.5	-3.0	-2.5	0.0	2.5	4.0	6.0	8.3	9.8	84.6	8.4	3.0
13	13.8	SE	20:05	4.6	-14.5	-4.0	-3.0	-2.5	0.0	2.5	4.0	6.0	8.0	9.9	81.0	9.8	4.2
14	21.0	NNE	11:52	7.1	-14.5	-4.0	-3.5	-3.0	-0.5	2.5	4.0	5.5	0.0	9.9	0.0	5.0	4.7
15	22.9	W	17:18	9.1	-14.5	-4.0	-3.5	-3.0	-0.5	2.5	4.0	5.5	8.3	10.0	82.9	9.8	2.8
16	22.2	N	1:40	8.2	-22.0	-4.5	-4.0	-3.5	-0.5	2.5	4.0	5.5	9.8	10.1	97.3	12.1	2.5
17	17.1	SSE	14:48	5.0	-18.5	-4.5	-4.0	-3.5	-1.0	2.5	4.0	5.5	9.7	10.1	95.8	11.0	2.6
18	16.5	SE	20:51	4.8	-18.0	-5.0	-4.5	-4.0	-1.0	2.5	3.5	5.5	9.7	10.2	95.1	11.8	2.8
19	30.9	SE	23:34	14.5	-15.0	-5.5	-5.0	-4.0	-1.0	2.0	3.5	5.5	9.9	10.3	96.5	13.2	2.8
20	33.1	SSE	12:34	17.0	-14.5	-6.0	-5.0	-4.5	-1.5	2.0	3.5	5.5	8.3	10.3	80.3	10.8	5.3
21	25.6	SW	13:39	13.1	-12.0	-6.0	-5.0	-4.5	-1.5	2.0	3.5	5.5	2.4	10.4	23.1	7.6	6.0
22	22.3	SSE	13:47	7.8	-8.5	-5.5	-5.0	-4.5	-1.5	2.0	3.5	5.5	7.0	10.5	66.9	10.4	5.0
23	44.7	WSW	16:59	20.0	-1.0	-4.5	-4.0	-4.0	-1.5	2.0	3.5	5.5	2.5	10.5	23.7	6.3	5.4
24	25.2	WNW	0:02	10.1	-5.5	-3.0	-3.0	-3.5	-1.5	2.0	3.5	5.5	9.7	10.6	91.6	10.5	1.9
25	19.8	SW	3:11	8.5	-6.0	-3.0	-2.5	-4.0	-1.5	1.5	3.0	5.5	7.0	10.7	65.7	10.1	5.4
26	41.0	WNW	13:27	17.1	-5.0	-2.5	-2.5	-2.5	-1.0	1.5	3.0	5.5	10.0	10.7	93.2	10.9	2.4
27	49.7	WNW	21:10	21.2	-0.5	-2.0	-2.0	-2.5	-1.0	1.5	3.0	5.5	6.3	10.8	58.4	8.2	4.7
28	46.1	WNW	0:24	17.4	-5.5	-1.0	-1.0	-2.0	-0.5	1.5	3.0	5.0	0.0	10.9	0.0	3.5	3.5
Total													168.7	279.5	60.4	230.0	100.2
Mean				13.0	-12.4	-3.4	-2.9	-2.8	-0.3	2.4	3.8	5.7	1991-2020 Normal				
Extreme	51.2	NW	11:12		1971- 2000 Normal for Soil Temperatures								139.6	281.6	49.6	209.1	100.9
Date	9				-7.0	-6.7	-6.1	-3.5	-0.8	0.8	3.4	No. of Bright Sunshine days = 23					

Note: Red numbers indicate manual calculation; Red cell indicate data not available

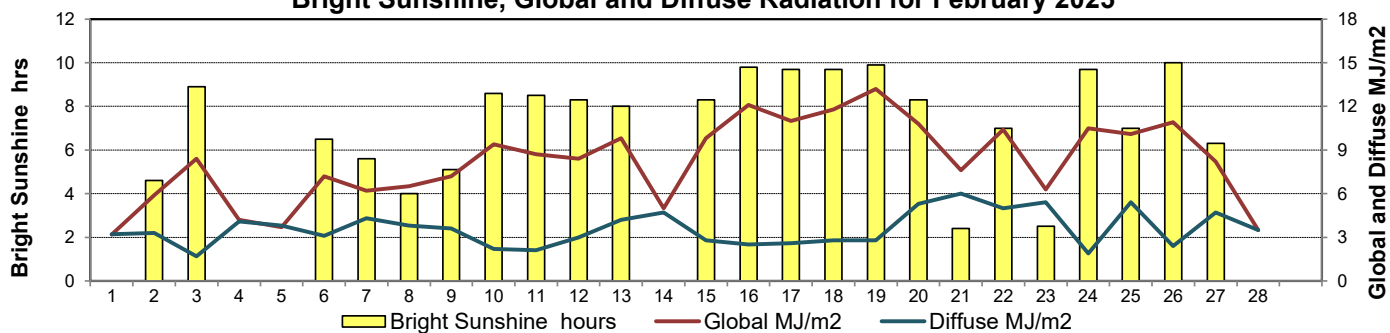
SRC proudly recognizes the following CRS supporters:



Wind Speed for February 2025

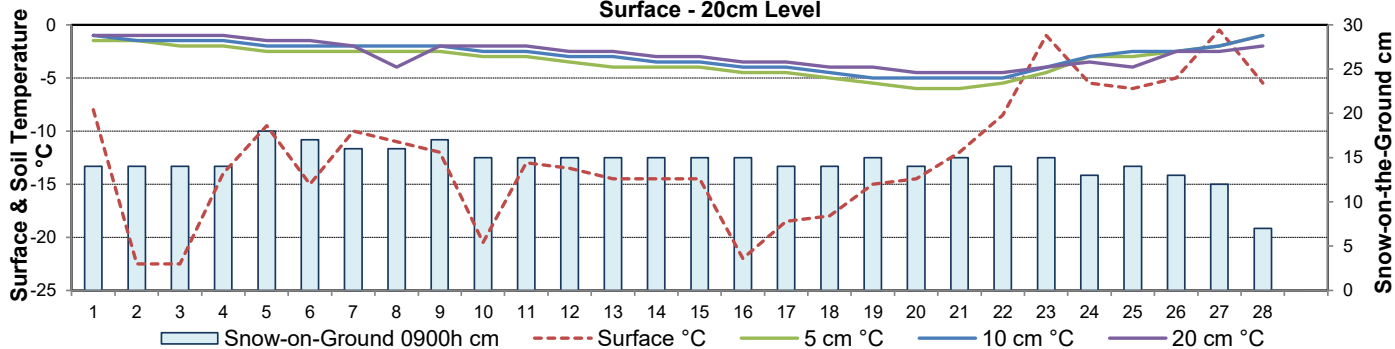


Bright Sunshine, Global and Diffuse Radiation for February 2025



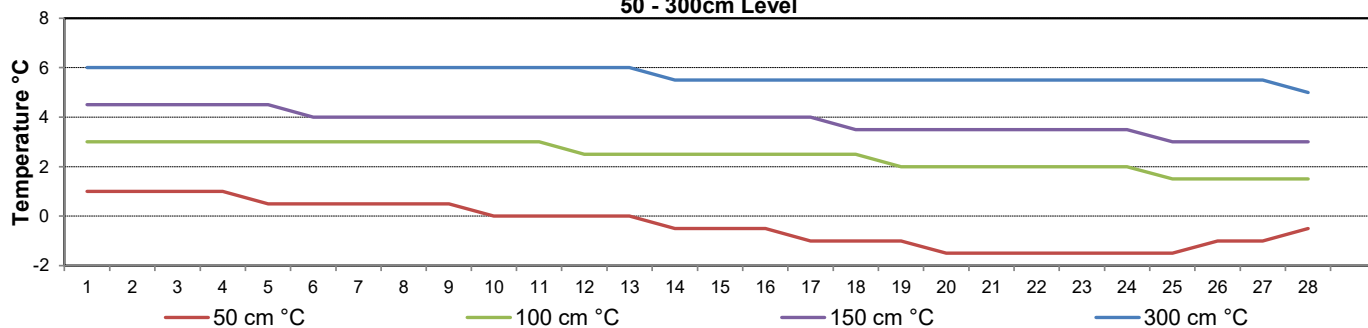
Soil Temperatures for February 2025

Surface - 20cm Level



Soil Temperatures for February 2025

50 - 300cm Level





SRC CLIMATE REFERENCE STATION DAILY DATA REPORT

SASKATOON STATION 4057180

52°09' N 106°36' W 497 m asl Estab. 1963

Preliminary FEBRUARY 2025

Extreme Records for February

Max/Min Temperature °C				Precipitation - Monthly mm				Wind Monthly km/h				CRS Bright Sunshine - Monthly			
S'toon Area	Date	Site	S'toon CRS Date	S'toon Area	Date	Site	S'toon CRS Date	S'toon Airport	Date	S'toon CRS**	Date	Hours	Year	No. of Days	Year
12.8	19/1931	SE	9.0 16/2017	43.7	1924	SE	40.2 1979	106 ^N	22/1988	82.3 ^{NNW}	10/2004	191.5	2021	29	2020
-50.0	01/1893	SM	-41.1 06/1972	0.0	multiply sites		1.7 2021					57.6	1983	17	1983/1998

**1975 forward * more than one year

Notable Events for CRS Saskatoon - February						Saskatoon Area Stations			Glossary	
Element	Type	Day	New Record	Old Record	Year	Station	Period	Station	Definition	
Temperature	Highest Maximum Daily	23	6.1	5.6	1976	SM	NWMP	c. 1892-1901	T	Trace of precipitation
		24	6.5	4.5	1998	SE	Eby	1901-1941	Normal	30 year average beginning with the decade
		25	8.7	6.5	1986	US	Univ. of Sask.	1915-1964	SOG	Depth of snow-on-the-ground in cm
	Lowest Minimum Daily	17	-37.0	-35.0	1966	S	Saskatoon	1941-1942	na	not available
		18	-40.2	-36.7	1966	SA	Saskatoon A	1942 -	Degree-days	
		17	-31.0	-30.3	1966	NRC	Nat. Res. Council	1952-1966	Tm	Mean Temperature
Lowest Mean Daily	17	-31.0	-30.3	1966	SRC	Sask. Res. Council	1963-	Growing	(Tm-5°C); if Tm ≤ 5°C then GDD = 0	
	18	-32.7	-30.8	1986	SWT	S'toon Water Treatment Plant	1974 -	Heating	(18°C-Tm); if Tm ≤ 18°C then HDD = 0	
Heating Degree-day	Highest	17	49.0	48.3	1966	SC	S'toon Central Ave	1974-1989	Cooling	(Tm-18°C); if Tm ≥ 18°C then CDD = 0
		18	50.7	48.8	1986	S1	Saskatoon 1	1976-1978	Extreme Cooling	(Tm-24°C); if Tm ≥ 24°C then CDD = 0
						S2	Saskatoon 2	1977-1990		
						K	S'toon Kernen Farm	1993-2004		
						KCS	S'toon Kernen Farm CS	1996-		
						RCS	Environment Canada	2008-		
				SF	Sutherland Forestry	1943-1970				

February 18, 2025 was the first temperature below -40C since January 2004.

The snowpack allowed the soils not to get too cold during the bone chilly temperatures, resulting in the water from the snow melt to soak into the soil as witnessed by the soil moisture sensors. In addition, the warm days and cool nights helped with the slow thaw of the snowpack so there is a limited amount runoff occurring at the moment

Winter 2024-2025 was the 28th driest of the last 62 years
 February 2025 was the 31st driest out of 62 years...so smack in the middle

SRC proudly recognizes the following CRS supporters:





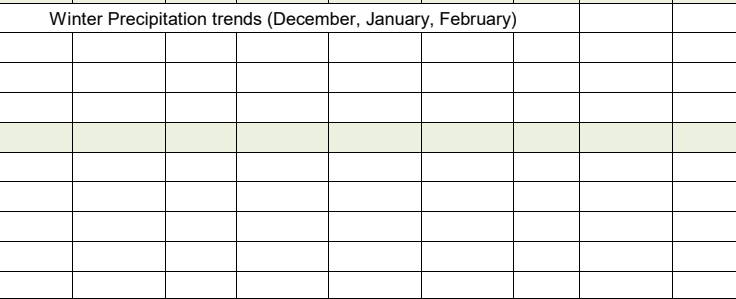
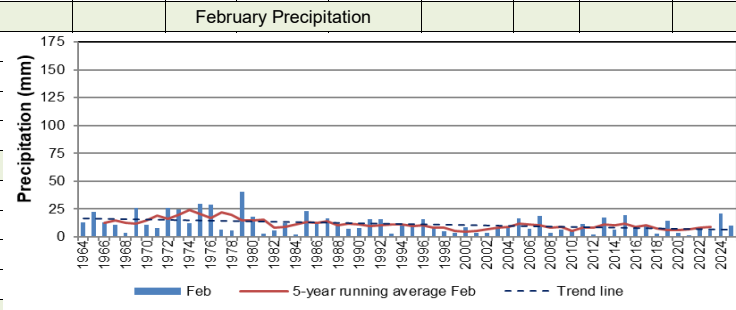
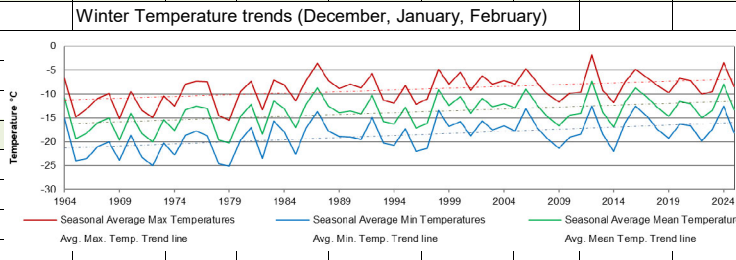
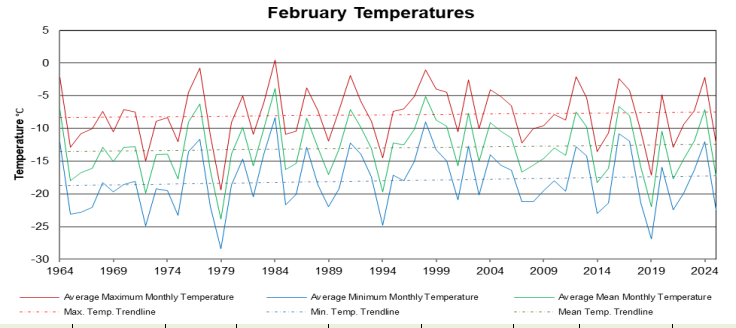
SRC CLIMATE REFERENCE STATION DAILY DATA REPORT

SASKATOON STATION 4057180

52°09' N 106°36' W 497 m asl Estab. 1963

Preliminary February 2025

Day	2 meter Wind Speed			Soil Moisture at 0900 hrs (rounded to the 0.5%)		
	Daily Average	Max ½ hr Avg	½ hr Extreme Max	10 cm	20 cm	50 cm
	km/h	km/h	km/h	% by volume (soil type is Loam (45.5% Sand, 41.1% Silt, 13.3% Clay))		
1	19.0	28.2	41.4	5.5	1.0	8.0
2	20.0	26.5	37.9	5.0	1.0	8.5
3	10.0	15.8	22.4	5.0	1.0	8.5
4	5.0	11.2	14.9	5.0	1.0	8.5
5	10.0	23.0	32.7	5.0	1.0	8.5
6	17.0	23.0	37.3	5.0	1.0	8.0
7	9.0	14.6	21.2	5.0	1.0	8.0
8	5.0	8.7	12.6	5.0	1.0	8.5
9	14.0	27.0	39.6	5.0	1.0	8.5
10	16.0	23.1	32.1	5.0	1.0	8.5
11	10.0	19.9	27.5	5.0	1.0	8.0
12	7.0	12.3	17.7	5.0	1.0	8.5
13	3.0	8.8	12.0	4.5	1.0	7.5
14	6.0	12.9	17.2	4.5	1.0	8.0
15	8.0	13.4	20.0	4.5	1.0	7.5
16	6.0	14.0	17.7	4.5	1.0	7.5
17	4.0	11.9	16.6	4.0	1.0	8.0
18	4.0	9.1	13.1	4.0	1.0	7.5
19	11.0	17.1	27.5	4.0	1.0	7.0
20	13.0	17.0	29.3	4.0	1.0	7.5
21	11.0	17.5	24.7	4.0	1.0	7.5
22	6.0	10.5	18.3	3.5	1.0	7.0
23	16.0	26.9	39.1	4.5	1.0	7.0
24	8.0	14.2	20.6	4.5	1.0	7.5
25	7.0	11.1	17.2	5.0	1.0	7.5
26	14.0	23.3	32.7	5.5	1.0	8.0
27	17.0	28.3	43.1	6.5	1.0	7.5
28	14.0	25.9	36.8	7.5	1.0	8.5
Total						
Mean				5	1	7.9
Extreme	20.0	28.3	43.1	7.5	1	8.5
Date	2	27	27	28	1	2



Note: Red numbers indicate manual calculation; Red cell indicate data not available

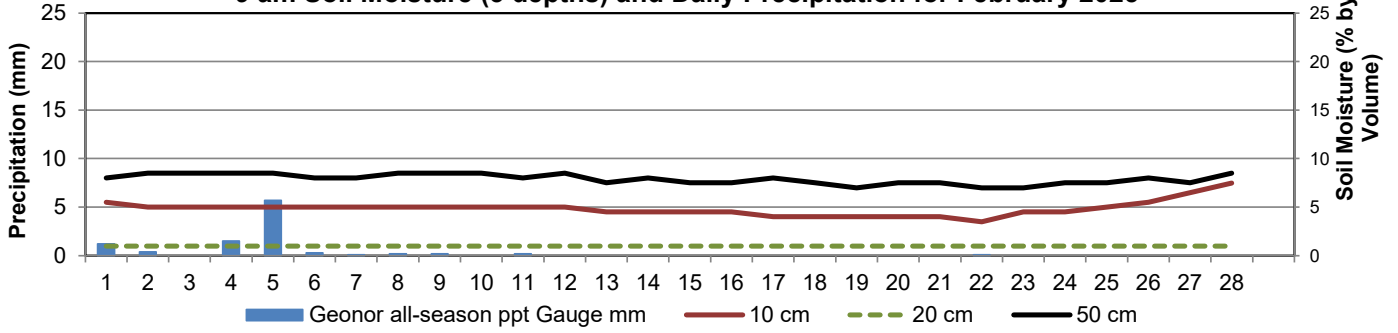
SRC proudly recognizes the following CRS supporters:



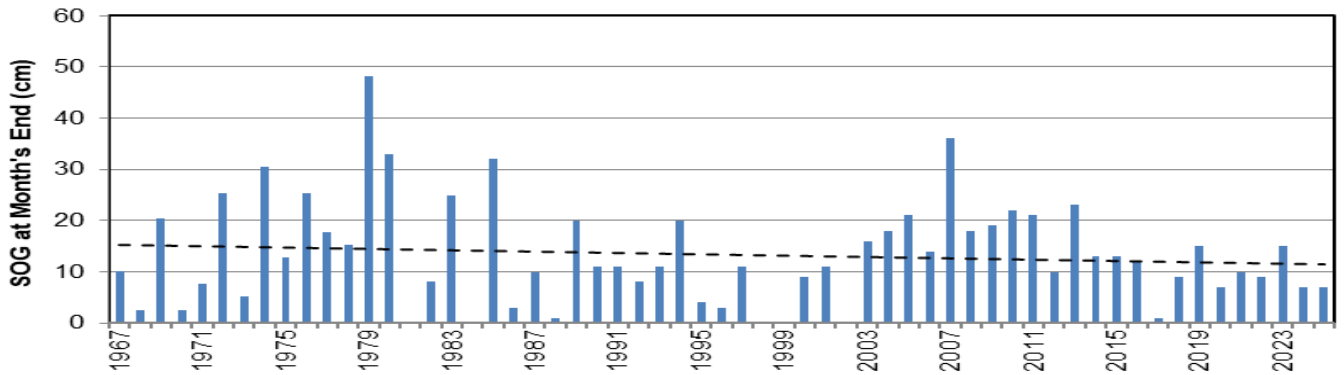
Agriculture and Agri-Food Canada / Agriculture et Agroalimentaire Canada



9 am Soil Moisture (3 depths) and Daily Precipitation for February 2025



February (1967 to 2025) End of Month Snow on Ground (depth (cm))



October 2024 to February 2025 09:00 Daily Snow Depth (cm)

