



SRC CLIMATE REFERENCE STATION DAILY DATA REPORT

SASKATOON STATION 4057180

52°09' N 106°36' W 497 m asl Estab. 1963

Preliminary **JANUARY 2018**

Day	Temperature						Degree-days			Precipitation			Relative Humidity		Station Pressure (sea level)	
	Max	Normal Max	Min	Normal Min	Mean	Normal Mean	Growing	Heating	Cooling	Weighing Gauge	Notes	Snow-on-Ground 0900h	Max ½ hr Avg	Min ½ hr Avg	Max ½ hr Avg	Min ½ hr Avg
	°C	1981-2010	°C	1981-2010	°C	1981-2010	5°C base	18°C base	18°C base	mm		cm	%	%	mbar	mbar
1	-18.6	-10.8	-27.8	-21.9	-23.2	-16.4	0.0	41.2	0.0	0.0		4	75	62	1037	1018
2	-6.6	-9.6	-18.6	-19.3	-12.6	-14.5	0.0	30.6	0.0	0.0		4	83	68	1024	1016
3	-4.6	-10.2	-15.1	-20.2	-9.9	-15.2	0.0	27.9	0.0	0.0	discontinuous snow cover	4	87	69	1024	1017
4	-9.2	-10.7	-12.2	-20.5	-10.7	-15.6	0.0	28.7	0.0	0.0		4	92	82	1021	1019
5	-9.3	-11.1	-12.8	-21.1	-11.1	-16.1	0.0	29.1	0.0	0.0		4	91	76	1021	1011
6	-1.7	-10.2	-12.5	-19.1	-7.1	-14.7	0.0	25.1	0.0	0.0		4	91	78	1011	1001
7	1.4	-10.4	-6.7	-18.9	-2.7	-14.7	0.0	20.7	0.0	0.0		4	83	58	1009	1005
8	-2.9	-11.2	-7.7	-19.7	-5.3	-15.5	0.0	23.3	0.0	0.0		4	87	76	1010	1006
9	-4.5	-12.2	-17.0	-21.3	-10.8	-16.8	0.0	28.8	0.0	0.2	light freezing rain, drizzle	4	91	74	1006	995
10	-17.0	-12.2	-25.0	-21.4	-21.0	-16.8	0.0	39.0	0.0	0.2	very light snow	4	73	66	1025	1005
11	-21.9	-10.8	-27.1	-19.9	-24.5	-15.4	0.0	42.5	0.0	0.0	discontinuous snow cover	4	73	62	1029	1025
12	-20.3	-9.7	-28.8	-19.6	-24.6	-14.7	0.0	42.6	0.0	0.0		4	75	61	1034	1028
13	-12.5	-9.7	-26.3	-20.3	-19.4	-15.0	0.0	37.4	0.0	0.0		4	82	61	1030	1018
14	-13.5	-10.3	-23.8	-20.7	-18.7	-15.5	0.0	36.7	0.0	0.1		4	81	49	1040	1019
15	-17.0	-8.1	-26.2	-18.6	-21.6	-13.4	0.0	39.6	0.0	0.0		4	79	59	1043	1031
16	-5.8	-8.7	-19.2	-18.2	-12.5	-13.5	0.0	30.5	0.0	0.0		4	70	50	1031	1009
17	6.2	-10.0	-10.4	-19.4	-2.1	-14.7	0.0	20.1	0.0	0.0		4	85	50	1021	1007
18	7.0	-8.3	-7.2	-19.2	-0.1	-13.7	0.0	18.1	0.0	0.0		2	85	65	1006	993
19	3.4	-9.9	-2.6	-20.1	0.4	-15.0	0.0	17.6	0.0	0.0	discontinuous snow cover	0	85	61	1001	993
20	-0.4	-8.6	-8.1	-18.6	-4.3	-13.6	0.0	22.3	0.0	0.0		0	93	77	1012	1001
21	-4.3	-9.2	-9.2	-19.1	-6.8	-14.2	0.0	24.8	0.0	0.1	thick fog	0	96	92	1014	1012
22	-2.6	-9.2	-8.7	-18.3	-5.7	-13.8	0.0	23.7	0.0	0.0		0	95	77	1013	1008
23	-4.8	-8.9	-6.8	-18.5	-5.8	-13.7	0.0	23.8	0.0	0.0	very light snow	0	95	87	1017	1013
24	-5.1	-10.3	-8.3	-19.9	-6.7	-15.1	0.0	24.7	0.0	0.0		0	94	91	1015	1008
25	-4.0	-9.5	-11.9	-19.8	-8.0	-14.7	0.0	26.0	0.0	0.1	light snow	0	92	82	1008	1000
26	-11.4	-8.4	-13.7	-20.1	-12.6	-14.2	0.0	30.6	0.0	9.2	snow	7	89	82	1014	1002
27	-13.2	-8.7	-24.8	-19.8	-19.0	-14.3	0.0	37.0	0.0	1.2	snow	8	87	73	1030	1015
28	-16.4	-10.3	-25.3	-19.8	-20.9	-15.1	0.0	38.9	0.0	0.5	snow	7	82	68	1036	1031
29	-8.8	-9.8	-25.1	-20.6	-17.0	-15.2	0.0	35.0	0.0	0.0		6	85	78	1033	1004
30	-0.1	-7.3	-12.3	-18.2	-6.2	-12.8	0.0	24.2	0.0	0.3	light snow	3	92	71	1007	986
31	-12.2	-8.6	-24.7	-17.8	-18.5	-13.2	0.0	36.5	0.0	0.1	light snow	0	78	63	1027	1007
Total							0.0	927.0	0.0	12.0			Extreme / Date	Extreme / Date	Extreme / Date	Extreme / Date
Avg	-7.4	-9.8	-16.3	-19.7	-11.9	-14.7	1981-2010 Normal			15.5	Normal					
Extreme Date	7.0		-28.8				0.0	1015.1	0.0	12.0	Cumulative		96	49	1043	986
	18		12							15.5	Cumulative Normal		21	14	15	30

Note: Red numbers indicate manual calculation; Red cell indicate data not available

SRC proudly recognizes the following CRS supporters:



Agriculture and Agri-Food Canada

Agriculture et Agroalimentaire Canada

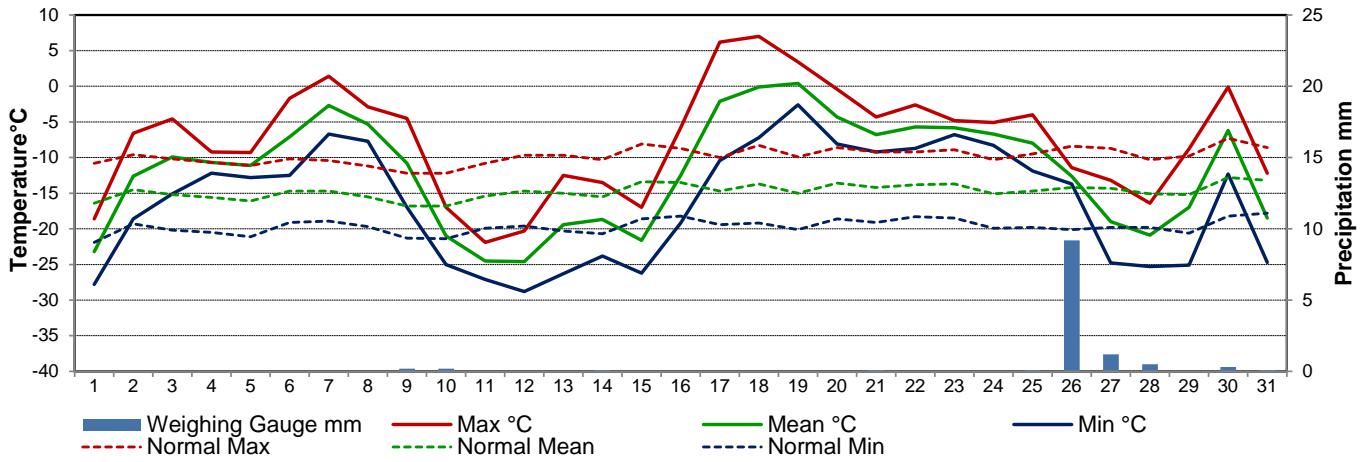


UNIVERSITY OF SASKATCHEWAN

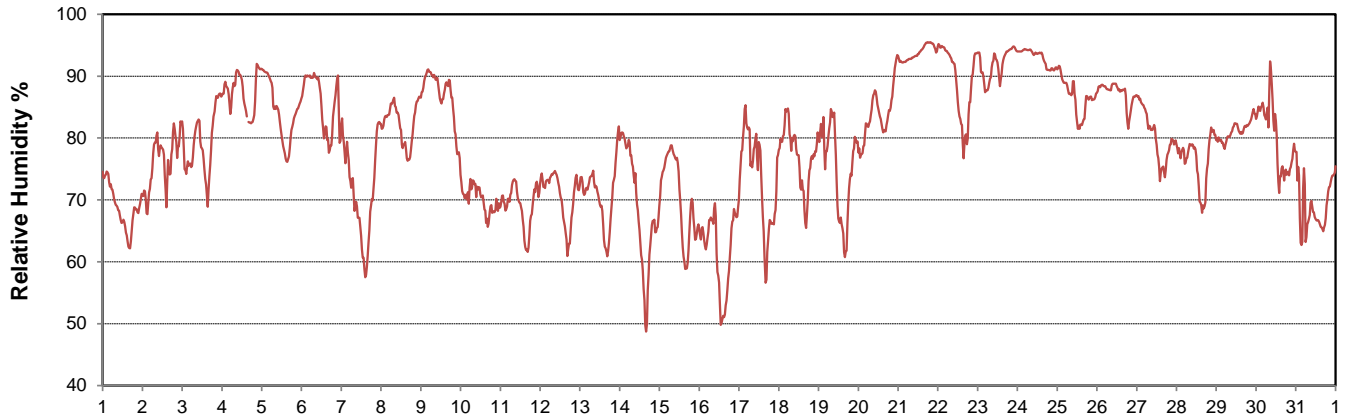


CAMPBELL SCIENTIFIC WHEN MEASUREMENTS MATTER

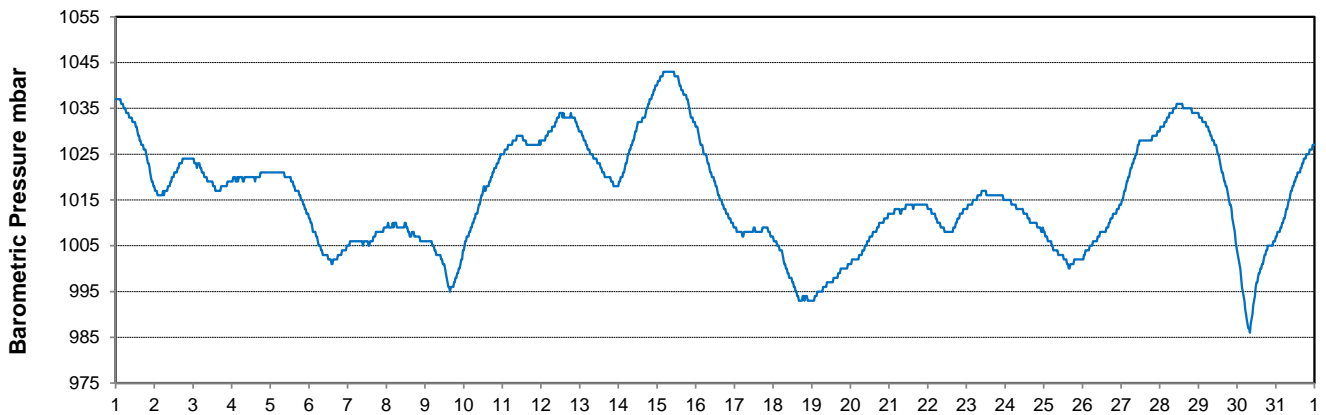
Temperature and Precipitation for January 2018



Relative Humidity for January 2018



Barometric Pressure Corrected to Sea Level for January 2018





SRC CLIMATE REFERENCE STATION DAILY DATA REPORT

SASKATOON STATION 4057180

52°09' N 106°36' W 497 m asl Estab. 1963

Preliminary **JANUARY 2018**

Day	Wind Gust			Soil Temperatures at 0900hrs								Soil Moisture 30 cm	Radiation				
	Max	Direction	Time	Surface	5 cm	10 cm	20 cm	50 cm	100 cm	150 cm	300 cm		0900hrs	Bright Sunshine	Possible	% Possible	Global
	km/h			°C	°C	°C	°C	°C	°C	°C	°C	%	hours	hours		MJ/m ²	MJ/m ²
1	35.9	SSW	21:18	-28.0	-14.0	-13.0	-10.5	-3.5	2.0	4.0	7.0	6	7.5	7.8	95.7	6.7	0.9
2	37.5	WSW	2:06	-10.0	-13.0	-12.5	-10.5	-4.0	2.0	4.0	7.0	6	2.8	7.9	35.6	2.6	1.6
3	23.1	SE	11:09	-11.0	-11.0	-10.5	-9.5	-4.5	1.5	4.0	7.0	6	6.9	7.9	87.6	3.6	0.9
4	31.2	SE	23:35	-11.5	-10.0	-9.5	-8.5	-4.5	1.5	3.5	7.0	7	0.0	7.9	0.0	1.7	1.4
5	38.2	SSE	12:19	-13.0	-8.5	-8.5	-7.5	-4.0	1.5	3.5	7.0	7	7.2	7.9	90.8	4.3	1.0
6	37.0	W	22:36	-12.5	-8.5	-8.0	-7.5	-4.0	1.0	3.5	7.0	7	4.0	8.0	50.3	3.7	1.6
7	54.3	WNW	15:04	-5.0	-7.5	-7.0	-7.0	-3.5	1.0	3.0	6.5	7	7.6	8.0	95.1	4.2	0.7
8	26.7	SE	12:53	-6.5	-7.0	-6.5	-6.0	-3.5	1.0	3.0	6.5	7	4.2	8.0	52.4	2.6	1.2
9	48.8	NNE	21:17	-7.0	-6.5	-6.0	-5.5	-3.0	1.0	3.0	6.5	8	0.0	8.1	0.0	1.4	1.2
10	51.2	N	6:07	-22.0	-6.5	-6.0	-5.5	-3.0	1.0	3.0	6.5	7	1.0	8.1	12.4	2.5	2.0
11	26.7	NW	11:10	-27.0	-9.0	-8.0	-6.5	-3.0	1.0	3.0	6.5	6	7.7	8.1	94.8	5.7	0.8
12	17.6	SSE	16:06	-29.0	-11.0	-10.0	-8.0	-3.0	1.0	2.5	6.5	6	7.7	8.2	94.4	6.5	1.0
13	28.1	SW	23:04	-25.0	-12.5	-11.5	-9.5	-4.0	1.0	2.5	6.0	6	7.3	8.2	89.0	5.2	1.6
14	35.7	N	11:09	-19.0	-11.5	-11.0	-9.5	-4.5	0.5	2.5	6.0	6	7.9	8.2	96.0	4.8	0.9
15	28.4	SSE	20:21	-26.5	-12.5	-11.5	-10.0	-4.5	0.5	2.5	6.0	6	7.9	8.3	95.4	6.1	1.0
16	26.7	S	13:17	-17.5	-12.5	-12.0	-10.5	-5.0	0.5	2.5	6.0	6	8.0	8.3	96.2	4.7	0.7
17	50.7	WNW	14:08	-3.5	-10.5	-10.5	-9.5	-5.0	0.5	2.5	6.0	7	2.7	8.4	32.3	2.5	1.5
18	38.9	WSW	16:14	-6.0	-8.0	-7.5	-7.5	-5.0	0.5	2.5	6.0	7	2.3	8.4	27.3	2.7	1.6
19	30.1	W	14:12	-2.5	-5.5	-5.5	-6.0	-4.0	0.0	2.0	6.0	8	6.2	8.5	73.4	4.2	1.5
20	24.3	WNW	10:16	-3.5	-5.0	-4.5	-5.0	-3.5	0.0	2.0	5.5	8	0.5	8.5	5.9	2.0	1.7
21	35.1	ESE	23:50	-8.0	-5.0	-4.5	-4.5	-3.0	0.0	2.0	5.5	8	0.0	8.6	0.0	1.2	1.0
22	34.4	SE	1:12	-8.5	-4.5	-4.5	-4.5	-2.5	0.0	2.0	5.5	8	5.8	8.6	67.5	5.7	1.7
23	27.2	WNW	9:08	-5.5	-4.5	-4.5	-4.0	-2.5	0.0	2.0	5.5	8	0.0	8.6	0.0	1.6	1.3
24	33.6	E	14:40	-6.5	-4.5	-4.0	-4.0	-2.5	0.0	2.0	5.5	8	0.0	8.7	0.0	1.5	1.2
25	33.1	NNE	18:40	-7.5	-4.5	-4.5	-4.0	-2.0	0.0	2.0	5.5	8	2.3	8.8	26.3	3.5	2.4
26	29.5	NW	17:34	-13.5	-5.0	-4.5	-4.0	-2.0	0.0	2.0	5.5	8	0.0	8.8	0.0	3.2	2.7
27	34.2	NNE	5:59	-18.5	-5.0	-4.5	-4.0	-2.0	0.5	2.0	5.0	8	6.0	8.9	67.8	5.6	2.5
28	11.5	ENE	0:12	-21.5	-5.0	-4.5	-4.0	-2.0	0.5	2.0	5.0	8	5.9	8.9	66.2	5.7	1.7
29	49.7	SE	23:09	-21.5	-5.5	-5.0	-4.5	-2.0	0.5	2.0	5.0	8	2.3	9.0	25.7	4.9	3.3
30	61.3	NW	12:50	-4.5	-5.5	-5.5	-5.0	-2.5	0.5	2.0	5.0	8	2.7	9.0	29.9	3.8	2.8
31	44.4	NNW	5:28	-21.5	-6.5	-5.5	-5.0	-2.5	0.5	2.0	5.0	8	8.8	9.1	97.0	6.8	1.2
Total													133.2	259.4	51.4	121.2	46.6
Mean				-13.6	-7.9	-7.5	-6.7	-3.4	0.7	2.6	6.0	7	1981-2010 Normal for Radiation				
Extreme	61.3	NW	12:50	1971- 2000 Normal for Soil Temperatures									101.0	259.0	39.0	126.9	68.7
Date	30			-8.4	-8.0	-7.1	-3.5	-0.1	1.7	4.6		No. of Bright Sunshine days = 25					

Note: Red numbers indicate manual calculation; Red cell indicate data not available

SRC proudly recognizes the following CRS supporters:



Agriculture and Agri-Food Canada

Agriculture et Agroalimentaire Canada

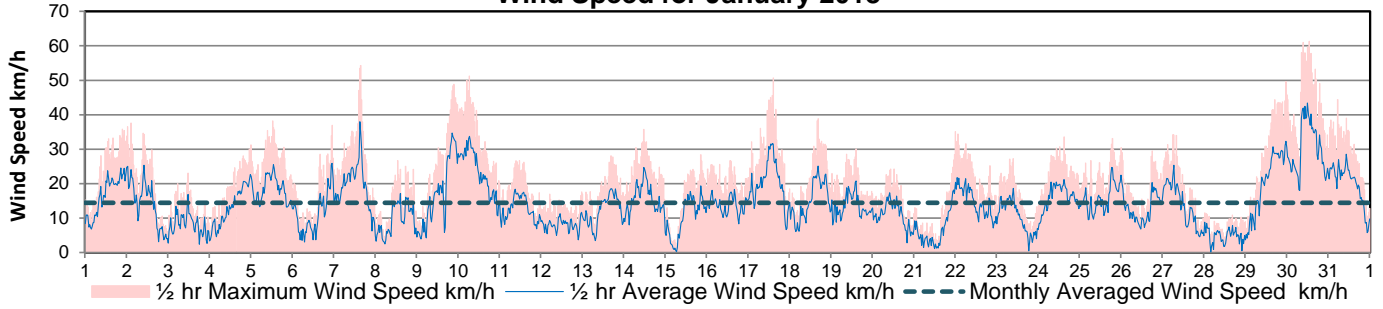


UNIVERSITY OF SASKATCHEWAN

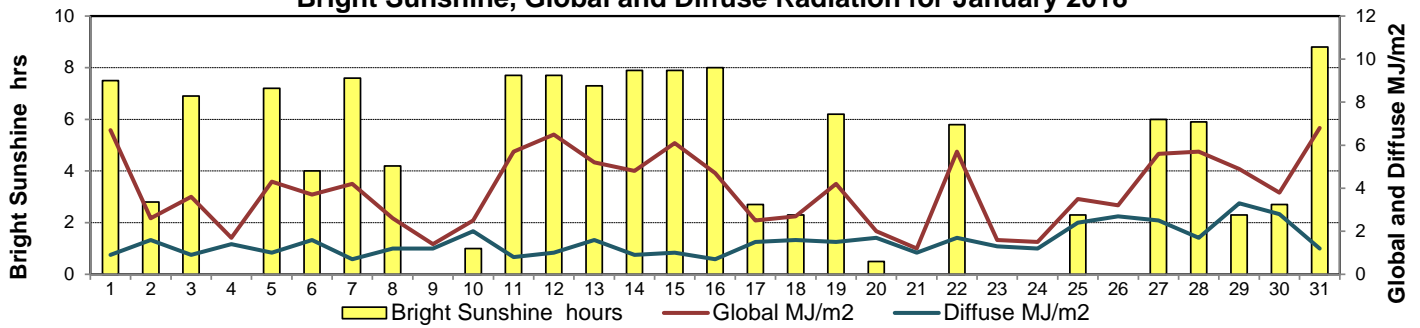


CAMPBELL SCIENTIFIC WHEN MEASUREMENTS MATTER

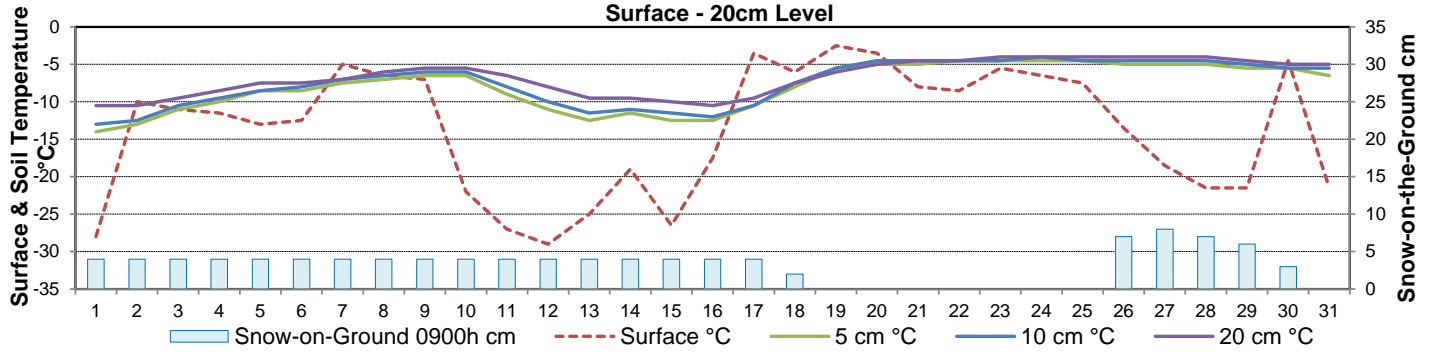
Wind Speed for January 2018



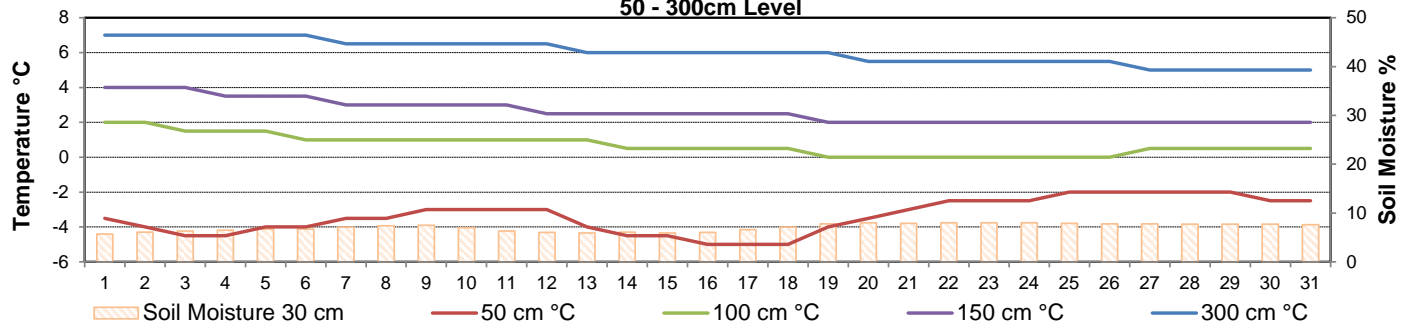
Bright Sunshine, Global and Diffuse Radiation for January 2018



**Soil Temperatures for January 2018
Surface - 20cm Level**



**Soil Temperatures for January 2018
50 - 300cm Level**





SRC CLIMATE REFERENCE STATION DAILY DATA REPORT

SASKATOON STATION 4057180

52°09' N 106°36' W 497 m asl Estab. 1963

Preliminary **JANUARY 2018**

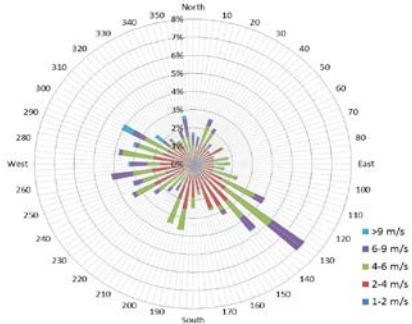
Extreme Records for January

Max/Min Temperature °C				Precipitation - Monthly mm				Wind Monthly km/h				CRS Bright Sunshine - Monthly			
S'toon Area	Date	Site	S'toon CRS Date	S'toon Area	Date	Site	S'toon CRS Date	S'toon Airport	Date	S'toon CRS**	Date	Hours	Year	No. of Days	Year
11.0	23/1980	SWT	8.1 15/2014	66.1	1911	SE	48.6 1969	111	11 ^W 1986	109	1986	146.9	1979	30	1993
-48.9	31/1893	SM	-43.9 *29/1969	0.0	2001, '89**12	SWT SC SE	2.6 2001					45.5	2004	15	1995

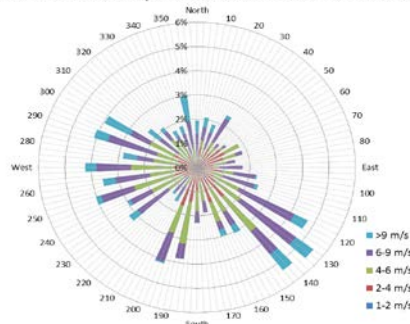
**1975 forward * more than one year

Notable Events for CRS Saskatoon - January						Saskatoon Area Stations			Glossary	
Element	Type	Day	New Record	Old Record	Year	Station	Location	Period	Term	Definition
Temperature	Maximum Daily	17	6.2	4.7	2017	SM	NWMP	c. 1892-1901	T	Trace of precipitation
						SE	Eby	1901-1941	Normal	30 year average beginning with the decade
						US	Univ. of Sask.	1915-1964	SOG	Depth of snow-on-the-ground in cm
						S	Saskatoon	1941-1942	na	not available
						SA	Saskatoon A	1942 -	Degree-days	
						NRC	Nat. Res. Council	1952-1966	Tm	Mean Temperature
						SRC	Sask. Res. Council	1963-	Growing	(Tm-5°C); if Tm ≤ 5°C then GDD = 0
						SWT	S'toon Water Treatment Plant	1974 -	Heating	(18°C-Tm); if Tm ≤ 18°C then HDD = 0
						SC	S'toon Central Ave	1974-1989	Cooling	(Tm-18°C); if Tm ≥ 18°C then CDD = 0
						S1	Saskatoon 1	1976-1978	Extreme Cooling	(Tm-24°C); if Tm ≥ 24°C then CDD = 0
						S2	Saskatoon 2	1977-1990	New operating system uploaded onto datalogger (Jan 4)	
					K	S'toon Kernen Farm	1993-2004			
					KCS	S'toon Kernen Farm CS	1996-			
					RCS	Environment Canada	2008-			
					SF	Sutherland Forestry	1943-1970			

10 minute Average Wind Speed and Direction Saskatoon Jan 2018



1/2 hr Maximum Wind Speed and Direction Saskatoon Jan 2018



SRC proudly recognizes the following CRS supporters:

