



# SRC CLIMATE REFERENCE STATION DAILY DATA REPORT

## SASKATOON STATION 4057180

52°09' N 106°36' W 497 m asl Estab. 1963

Preliminary **JANUARY 2019**

Day	Temperature						Degree-days			Precipitation			Relative Humidity		Station Pressure (sea level)	
	Max	Normal Max	Min	Normal Min	Mean	Normal Mean	Growing	Heating	Cooling	Weighing Gauge	Notes	Snow-on-Ground 0900h	Max ½ hr Avg	Min ½ hr Avg	Max ½ hr Avg	Min ½ hr Avg
	°C	1981-2010	°C	1981-2010	°C	1981-2010	5°C base	18°C base	18°C base	mm		cm	%	%	mbar	mbar
1	-1.9	-10.8	-23.0	-21.9	-12.5	-16.4	0.0	30.5	0.0	0.5	light snow	6	86	74	1024	1002
2	4.0	-9.6	-10.2	-19.3	-3.1	-14.5	0.0	21.1	0.0	0.0		7	93	73	1004	997
3	3.9	-10.2	-3.9	-20.2	0.0	-15.2	0.0	18.0	0.0	0.0		7	89	68	1001	997
4	0.3	-10.7	-6.6	-20.5	-3.2	-15.6	0.0	21.2	0.0	0.1		7	94	62	1007	999
5	-4.7	-11.1	-9.3	-21.1	-7.0	-16.1	0.0	25.0	0.0	0.0		7	93	82	1016	1007
6	-0.8	-10.2	-7.0	-19.1	-3.9	-14.7	0.0	21.9	0.0	0.2	light freezing rain / snow	7	93	84	1009	987
7	-0.8	-10.4	-15.4	-18.9	-8.1	-14.7	0.0	26.1	0.0	0.4	light snow	7	95	70	1011	987
8	-14.6	-11.2	-21.8	-19.7	-18.2	-15.5	0.0	36.2	0.0	0.0		7	76	66	1031	1012
9	-10.7	-12.2	-22.8	-21.3	-16.8	-16.8	0.0	34.8	0.0	0.4	light snow	7	83	69	1031	1014
10	-10.0	-12.2	-15.1	-21.4	-12.6	-16.8	0.0	30.6	0.0	0.0		7	87	75	1021	1012
11	-11.0	-10.8	-14.2	-19.9	-12.6	-15.4	0.0	30.6	0.0	0.2	light snow	7	89	81	1026	1021
12	-3.2	-9.7	-13.1	-19.6	-8.2	-14.7	0.0	26.2	0.0	0.0		8	84	68	1021	1015
13	0.7	-9.7	-13.0	-20.3	-6.2	-15.0	0.0	24.2	0.0	0.1	freezing rain	7	90	56	1023	1019
14	-3.8	-10.3	-7.9	-20.7	-5.9	-15.5	0.0	23.9	0.0	0.0	freezing rain / fog	7	95	83	1023	1012
15	-1.4	-8.1	-22.2	-18.6	-11.8	-13.4	0.0	29.8	0.0	0.0		7	87	67	1026	1013
16	-16.8	-8.7	-24.6	-18.2	-20.7	-13.5	0.0	38.7	0.0	0.1	light snow	7	80	76	1023	1020
17	-17.1	-10.0	-27.1	-19.4	-22.1	-14.7	0.0	40.1	0.0	0.0		7	80	56	1026	1020
18	-20.9	-8.3	-32.4	-19.2	-26.7	-13.7	0.0	44.7	0.0	0.2	light snow	7	75	68	1028	1025
19	-17.6	-9.9	-28.5	-20.1	-23.1	-15.0	0.0	41.1	0.0	0.8	light snow	7	79	63	1027	1018
20	-12.0	-8.6	-19.2	-18.6	-15.6	-13.6	0.0	33.6	0.0	0.0		7	90	75	1019	1009
21	-9.2	-9.2	-15.7	-19.1	-12.5	-14.2	0.0	30.5	0.0	0.0		7	90	82	1019	1008
22	-4.8	-9.2	-15.6	-18.3	-10.2	-13.8	0.0	28.2	0.0	0.0		6	91	73	1019	1007
23	-6.1	-8.9	-24.9	-18.5	-15.5	-13.7	0.0	33.5	0.0	0.1	light snow	6	85	60	1028	1007
24	-12.8	-10.3	-26.0	-19.9	-19.4	-15.1	0.0	37.4	0.0	0.0		6	79	70	1028	1012
25	-9.8	-9.5	-22.9	-19.8	-16.4	-14.7	0.0	34.4	0.0	0.0		6	90	77	1018	1012
26	-8.3	-8.4	-14.1	-20.1	-11.2	-14.2	0.0	29.2	0.0	0.6	freezing rain / snow	7	89	81	1015	1005
27	4.7	-8.7	-10.5	-19.8	-2.9	-14.3	0.0	20.9	0.0	3.8	freezing rain / snow	9	96	67	1019	994
28	-10.4	-10.3	-24.5	-19.8	-17.5	-15.1	0.0	35.5	0.0	0.0		8	84	47	1028	1020
29	-22.4	-9.8	-29.7	-20.6	-26.1	-15.2	0.0	44.1	0.0	0.1		8	73	51	1029	1021
30	-17.5	-7.3	-26.1	-18.2	-21.8	-12.8	0.0	39.8	0.0	0.5	light snow	9	80	68	1021	1006
31	-4.3	-8.6	-17.5	-17.8	-10.9	-13.2	0.0	28.9	0.0	0.3	light snow	9	91	78	1007	1003
Total							0.0	960.7	0.0	8.4			Extreme / Date	Extreme / Date	Extreme / Date	Extreme / Date
Avg	-7.7	-9.8	-18.2	-19.7	-13.0	-14.7	1981-2010 Normal			15.5	Normal					
Extreme Date	4.7		-32.4				0.0	1015.1	0.0	8.4	Cumulative		96	47	1031	987
	27		18							15.5	Cumulative Normal		27	28	8	6

Note: Red numbers indicate manual calculation; Red cell indicate data not available

SRC proudly recognizes the following CRS supporters:



Agriculture and Agri-Food Canada

Agriculture et Agroalimentaire Canada

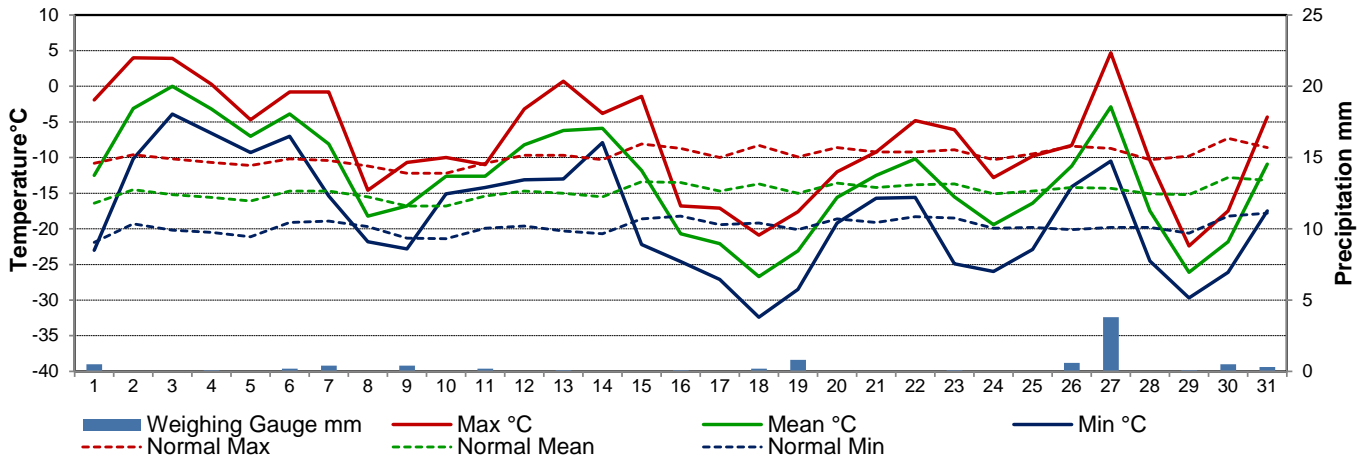


UNIVERSITY OF SASKATCHEWAN

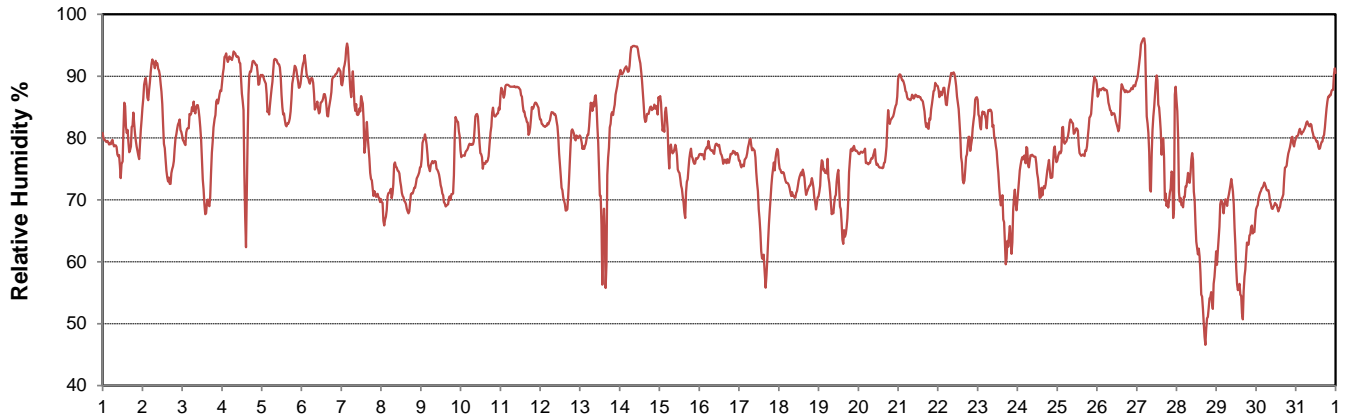


CAMPBELL SCIENTIFIC WHEN MEASUREMENTS MATTER

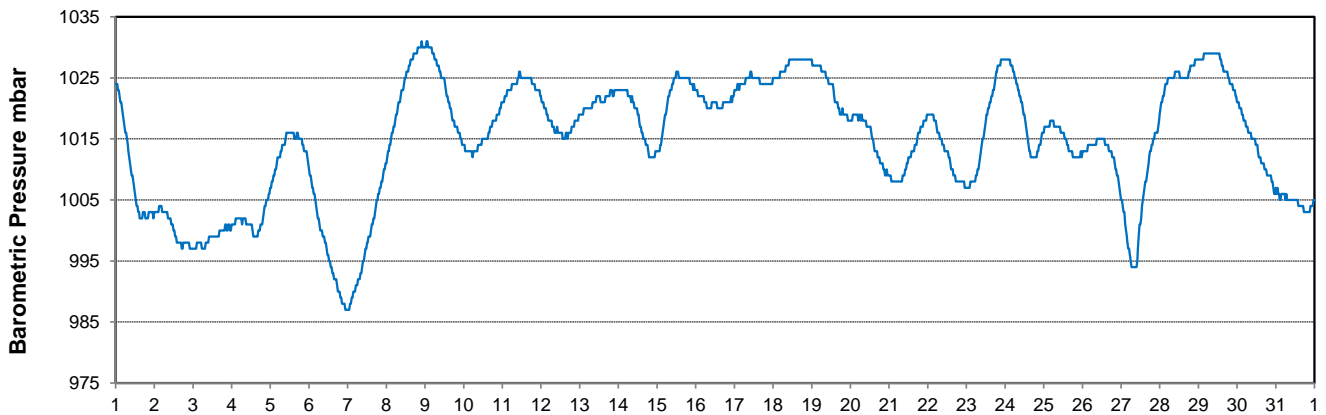
### Temperature and Precipitation for January 2019



### Relative Humidity for January 2019



### Barometric Pressure Corrected to Sea Level for January 2019





SRC CLIMATE REFERENCE STATION DAILY DATA REPORT

SASKATOON STATION 4057180

52°09' N 106°36' W 497 m asl Estab. 1963

Preliminary JANUARY 2019

Day	Wind Gust			Soil Temperatures at 0900hrs								Radiation				
	Max	Direction	Time	Surface	5 cm	10 cm	20 cm	50 cm	100 cm	150 cm	300 cm	Bright Sunshine	Possible	% Possible	Global	Diffuse
	km/h			°C	°C	°C	°C	°C	°C	°C	°C	hours	hours		MJ/m <sup>2</sup>	MJ/m <sup>2</sup>
1	37.0	WSW	13:39	-15.0	-9.5	-8.5	-7.5	-2.0	2.0	3.5	6.5	1.7	7.8	21.7	1.9	1.3
2	30.8	WSW	14:58	-8.0	-7.5	-7.0	-6.5	-2.5	2.0	3.5	6.5	0.0	7.9	0.0	2.1	1.7
3	27.0	NW	12:10	-2.5	-5.0	-5.0	-5.0	-2.5	2.0	3.5	6.5	6.7	7.9	85.1	3.7	0.8
4	36.7	ENE	15:36	-7.5	-5.0	-4.5	-4.0	-2.0	1.5	3.5	6.5	0.4	7.9	5.1	1.9	1.4
5	34.6	SE	20:30	-8.5	-4.5	-4.0	-3.5	-2.0	1.5	3.5	6.0	0.0	7.9	0.0	2.4	1.9
6	52.3	SE	5:30	-5.0	-4.5	-4.0	-3.5	-1.5	1.5	3.5	6.0	0.0	8.0	0.0	1.3	1.1
7	60.8	WNW	16:16	-7.5	-3.5	-3.5	-3.5	-1.5	1.5	3.0	6.0	0.0	8.0	0.0	1.6	1.4
8	52.3	WNW	9:10	-15.0	-6.0	-5.5	-4.5	-1.5	1.5	3.0	6.0	5.9	8.0	73.7	4.0	0.9
9	53.8	ESE	14:03	-17.0	-8.0	-7.5	-6.0	-1.5	1.5	3.0	6.0	0.0	8.0	0.0	1.7	1.4
10	34.4	SE	0:04	-12.5	-7.0	-7.0	-6.0	-2.0	1.5	3.0	6.0	6.9	8.1	85.4	4.1	0.9
11	25.8	SE	23:48	-13.0	-7.0	-7.0	-6.0	-2.5	1.5	3.0	6.0	1.1	8.1	13.6	2.8	2.1
12	33.4	SSE	20:00	-12.5	-7.0	-6.5	-6.0	-2.5	1.5	3.0	6.0	7.3	8.2	89.6	4.6	1.4
13	13.9	NE	1:00	-14.5	-7.0	-6.5	-6.0	-2.5	1.0	3.0	6.0	6.4	8.2	78.1	4.2	1.0
14	35.2	NW	23:23	-5.0	-6.0	-5.5	-5.5	-2.5	1.0	3.0	5.5	5.2	8.2	63.2	3.8	1.9
15	48.7	NNE	5:33	-18.0	-5.5	-5.0	-5.0	-2.5	1.0	2.5	5.5	7.6	8.3	91.9	4.8	0.9
16	23.1	NNE	23:18	-19.5	-8.0	-7.5	-6.5	-2.5	1.0	2.5	5.5	0.0	8.3	0.0	2.3	1.9
17	27.3	NNE	7:33	-24.0	-8.5	-8.0	-7.0	-3.0	1.0	2.5	5.5	7.8	8.4	93.4	6.0	0.9
18	16.6	NE	15:22	-32.5	-11.5	-10.5	-8.5	-3.0	1.0	2.5	5.5	4.5	8.4	53.6	5.0	1.9
19	46.1	E	22:19	-25.5	-12.0	-11.0	-9.5	-4.0	1.0	2.5	5.5	0.1	8.4	1.2	2.7	2.2
20	40.1	SE	0:06	-18.5	-10.5	-10.0	-9.5	-4.5	0.5	2.5	5.5	0.3	8.5	3.5	3.2	2.6
21	22.8	S	1:23	-15.0	-9.0	-9.0	-8.5	-4.5	0.5	2.5	5.5	1.1	8.5	12.9	2.3	1.7
22	22.8	SSW	9:39	-11.0	-8.5	-8.5	-8.0	-4.5	0.5	2.0	5.5	5.7	8.6	66.4	5.3	2.2
23	55.2	N	9:36	-10.5	-7.5	-7.5	-7.0	-4.0	0.5	2.0	5.5	6.5	8.6	75.3	4.9	1.3
24	26.4	NNE	21:52	-25.5	-10.0	-9.5	-8.0	-4.0	0.5	2.0	5.0	4.7	8.7	54.1	5.4	1.7
25	26.4	NE	23:56	-20.5	-10.5	-9.5	-9.0	-4.5	0.0	2.0	5.0	1.2	8.7	13.7	3.0	2.0
26	26.3	SE	11:33	-13.5	-9.5	-9.0	-8.5	-4.5	0.0	2.0	5.0	0.0	8.8	0.0	2.3	2.0
27	78.0	N	14:37	3.0	-7.5	-7.5	-7.5	-4.5	0.0	2.0	5.0	0.0	8.8	0.0	2.4	2.0
28	48.3	NNW	1:07	-20.0	-7.5	-7.0	-6.5	-4.0	0.0	2.0	5.0	8.6	8.9	96.7	6.8	1.0
29	24.6	NW	6:55	-30.0	-10.0	-9.0	-7.5	-4.0	0.0	1.5	5.0	7.4	9.0	82.7	6.4	1.8
30	39.9	SE	16:55	-25.5	-10.5	-10.0	-9.0	-4.5	0.0	1.5	5.0	1.8	9.0	20.0	4.2	2.9
31	29.0	NNE	23:14	-14.5	-10.0	-9.5	-9.0	-5.0	0.0	1.5	5.0	0.0	9.1	0.0	2.9	2.4
Total												98.9	259.0	38.2	110.0	50.6
Mean				-15.0	-7.9	-7.4	-6.7	-3.1	0.9	2.6	5.6	1981-2010 Normal for Radiation				
Extreme	78.0	N	14:37	1971- 2000 Normal for Soil Temperatures								101.0	259.0	39.0	126.9	68.7
Date	27			-8.4	-8.0	-7.1	-3.5	-0.1	1.7	4.6	No. of Bright Sunshine days = 22					

Note: Red numbers indicate manual calculation; Red cell indicate data not available

SRC proudly recognizes the following CRS supporters:



Agriculture and Agri-Food Canada

Agriculture et Agroalimentaire Canada

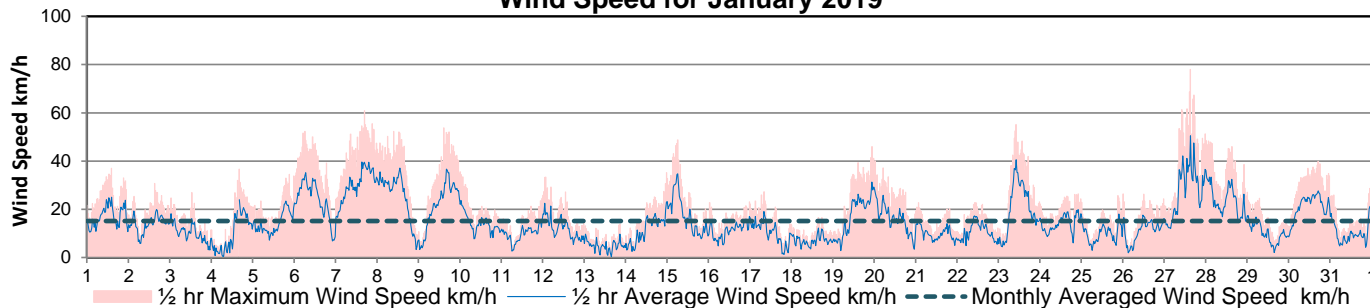


UNIVERSITY OF SASKATCHEWAN

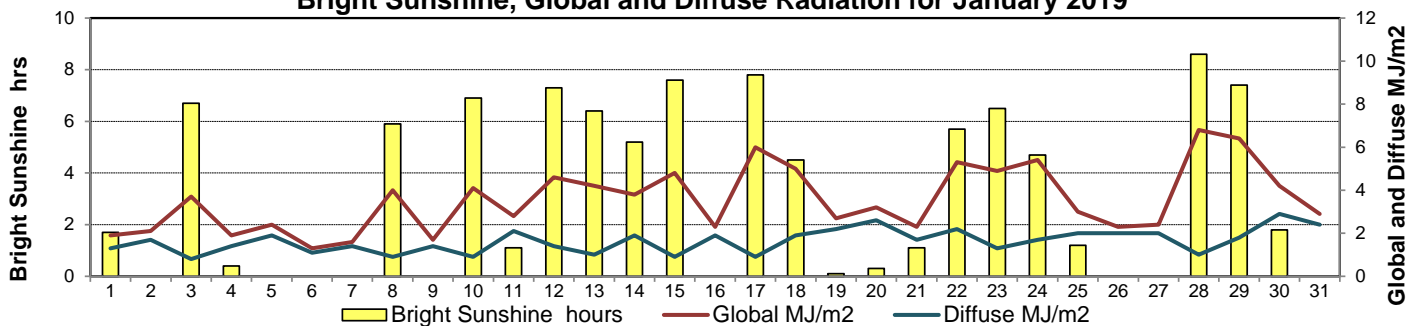


CAMPBELL SCIENTIFIC WHEN MEASUREMENTS MATTER

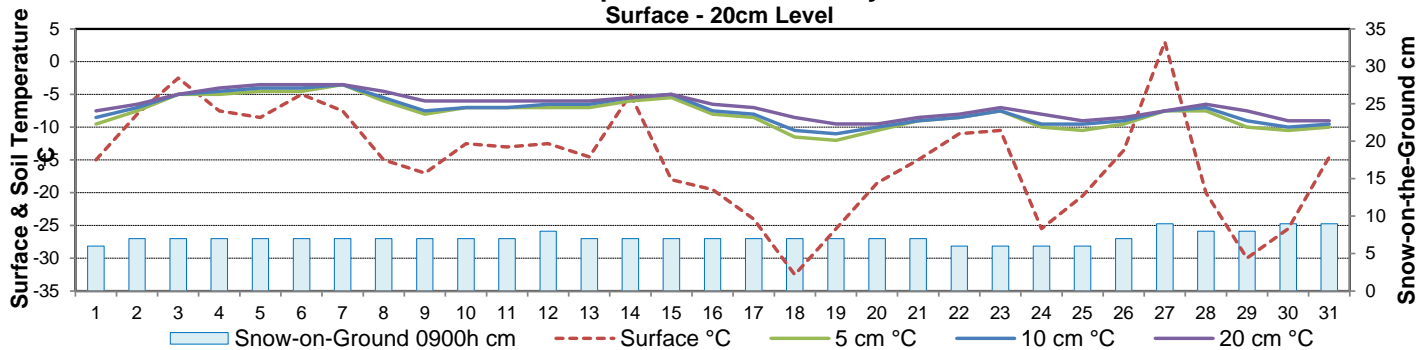
**Wind Speed for January 2019**



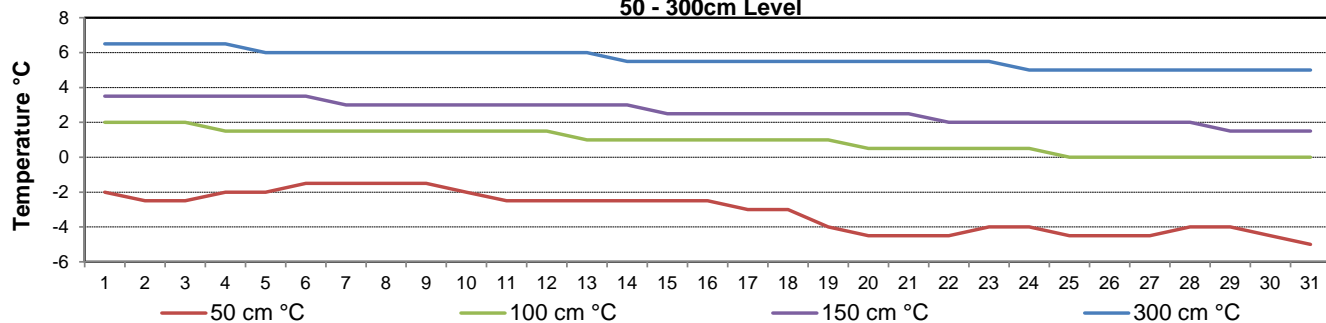
**Bright Sunshine, Global and Diffuse Radiation for January 2019**



**Soil Temperatures for January 2019  
Surface - 20cm Level**



**Soil Temperatures for January 2019  
50 - 300cm Level**





# SRC CLIMATE REFERENCE STATION DAILY DATA REPORT

## SASKATOON STATION 4057180

52°09' N 106°36' W 497 m asl Estab. 1963

Preliminary **JANUARY 2019**

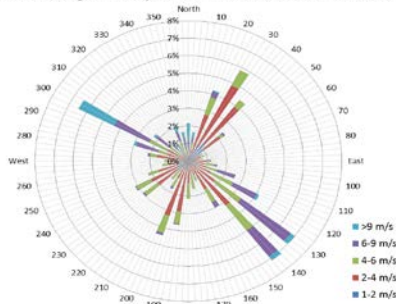
### Extreme Records for January

Max/Min Temperature °C				Precipitation - Monthly mm				Wind Monthly km/h				CRS Bright Sunshine - Monthly			
S'toon Area	Date	Site	S'toon CRS Date	S'toon Area	Date	Site	S'toon CRS Date	S'toon Airport	Date	S'toon CRS**	Date	Hours	Year	No. of Days	Year
11.0	23/1980	SWT	8.1 15/2014	66.1	1911	SE	48.6 1969	111	11 <sup>W</sup> 1986	109	1986	146.9	1979	30	1993
-48.9	31/1893	SM	-43.9 *29/1969	0.0	2001, '89**12	SWT SC SE	2.6 2001					45.5	2004	15	1995

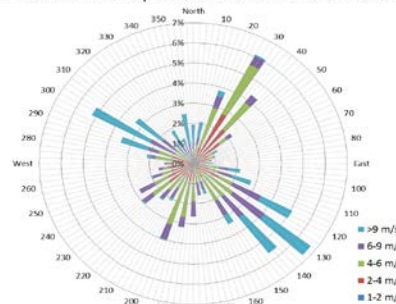
\*\*1975 forward \* more than one year

Notable Events for CRS Saskatoon - January						Saskatoon Area Stations			Glossary	
Element	Type	Day	New Record	Old Record	Year	Station	Location	Period	Term	Definition
						SM	NWMP	c. 1892-1901	T	Trace of precipitation
						SE	Eby	1901-1941	Normal	30 year average beginning with the decade
						US	Univ. of Sask.	1915-1964	SOG	Depth of snow-on-the-ground in cm
						S	Saskatoon	1941-1942	na	not available
						SA	Saskatoon A	1942 -	<b>Degree-days</b>	
						NRC	Nat. Res. Council	1952-1966	Tm	Mean Temperature
						SRC	Sask. Res. Council	1963-	Growing	(Tm-5°C); if Tm ≤ 5°C then GDD = 0
						SWT	S'toon Water Treatment Plant	1974 -	Heating	(18°C-Tm); if Tm ≤ 18°C then HDD = 0
						SC	S'toon Central Ave	1974-1989	Cooling	(Tm-18°C); if Tm ≥ 18°C then CDD = 0
						S1	Saskatoon 1	1976-1978	Extreme Cooling	(Tm-24°C); if Tm ≥ 24°C then CDD = 0
						S2	Saskatoon 2	1977-1990	Manual Snow Depths (average of 3 meter sticks located inside climate station compound) Jan 3 = 5.5 cm discontinuous snow cover outside of compound Jan 10 = 4 cm Jan 15 = 5 cm Jan 24 = 9.5 cm Jan 29 = 10.5 cm	
						K	S'toon Kernen Farm	1993-2004		
						KCS	S'toon Kernen Farm CS	1996-		
						RCS	Environment Canada	2008-		
						SF	Sutherland Forestry	1943-1970		

10 minute Average Wind Speed and Direction Saskatoon Jan 2019



1/2 hr Maximum Wind Speed and Direction Saskatoon Jan 2019



### SRC proudly recognizes the following CRS supporters:

