



SRC CLIMATE REFERENCE STATION DAILY DATA REPORT

SASKATOON STATION 4057180

52°09' N 106°36' W 497 m asl Estab. 1963

Preliminary JANUARY 2020

Day	Temperature						Degree-days			Precipitation			Relative Humidity		Station Pressure (sea level)	
	Max	Normal Max	Min	Normal Min	Mean	Normal Mean	Growing	Heating	Cooling	Weighing Gauge	Notes	Snow-on-Ground 0900h	Max ½ hr Avg	Min ½ hr Avg	Max ½ hr Avg	Min ½ hr Avg
	°C	1981-2010	°C	1981-2010	°C	1981-2010	5°C base	18°C base	18°C base	mm		cm	%	%	mbar	mbar
1	-3.6	-10.8	-8.7	-21.9	-6.2	-16.4	0.0	24.2	0.0	0.2	light snow	8	95	87	995	988
2	-1.6	-9.6	-7.4	-19.3	-4.5	-14.5	0.0	22.5	0.0	0.0		9	94	62	1006	995
3	-4.0	-10.2	-10.8	-20.2	-7.4	-15.2	0.0	25.4	0.0	0.0		9	88	71	1012	1006
4	4.0	-10.7	-7.6	-20.5	-1.8	-15.6	0.0	19.8	0.0	0.1	light snow	9	92	65	1009	992
5	-3.1	-11.1	-10.3	-21.1	-6.7	-16.1	0.0	24.7	0.0	0.0		9	83	56	1014	1005
6	-3.1	-10.2	-19.3	-19.1	-11.2	-14.7	0.0	29.2	0.0	0.0		8	83	54	1017	1003
7	-19.1	-10.4	-25.8	-18.9	-22.5	-14.7	0.0	40.5	0.0	0.1		8	80	61	1023	1017
8	-11.1	-11.2	-21.1	-19.7	-16.1	-15.5	0.0	34.1	0.0	1.4	snow	8	84	70	1016	997
9	-16.3	-12.2	-25.9	-21.3	-21.1	-16.8	0.0	39.1	0.0	0.0	very light snow	10	81	66	1021	1004
10	-20.0	-12.2	-28.9	-21.4	-24.5	-16.8	0.0	42.5	0.0	0.2		8	76	69	1024	1012
11	-11.2	-10.8	-20.0	-19.9	-15.6	-15.4	0.0	33.6	0.0	1.5	light snow	8	86	74	1012	1006
12	-12.9	-9.7	-27.9	-19.6	-20.4	-14.7	0.0	38.4	0.0	0.6	light snow	13	86	63	1017	1007
13	-24.4	-9.7	-29.9	-20.3	-27.2	-15.0	0.0	45.2	0.0	0.4	light snow	10	72	64	1019	1017
14	-25.0	-10.3	-32.3	-20.7	-28.7	-15.5	0.0	46.7	0.0	0.0		10	72	59	1025	1019
15	-29.1	-8.1	-34.0	-18.6	-31.6	-13.4	0.0	49.6	0.0	0.0		10	69	56	1034	1025
16	-19.8	-8.7	-35.5	-18.2	-27.7	-13.5	0.0	45.7	0.0	0.2		10	72	57	1034	1017
17	-18.8	-10.0	-21.8	-19.4	-20.3	-14.7	0.0	38.3	0.0	2.1	snow	10	77	57	1031	1015
18	-21.7	-8.3	-26.6	-19.2	-24.2	-13.7	0.0	42.2	0.0	0.0		8	76	69	1033	1023
19	-20.0	-9.9	-28.3	-20.1	-24.2	-15.0	0.0	42.2	0.0	0.0		8	78	68	1034	1025
20	-0.4	-8.6	-21.1	-18.6	-10.8	-13.6	0.0	28.8	0.0	0.0		8	78	67	1025	1004
21	0.5	-9.2	-12.0	-19.1	-5.8	-14.2	0.0	23.8	0.0	0.0		8	89	63	1005	1003
22	-4.5	-9.2	-14.6	-18.3	-9.6	-13.8	0.0	27.6	0.0	0.3	thick fog am	8	91	85	1013	1005
23	-3.3	-8.9	-9.8	-18.5	-6.6	-13.7	0.0	24.6	0.0	0.0		8	89	75	1016	1012
24	0.2	-10.3	-7.5	-19.9	-3.7	-15.1	0.0	21.7	0.0	0.0		8	88	70	1011	1004
25	-1.4	-9.5	-5.1	-19.8	-3.3	-14.7	0.0	21.3	0.0	0.0		8	90	85	1013	1002
26	-2.8	-8.4	-9.8	-20.1	-6.3	-14.2	0.0	24.3	0.0	0.0		8	91	70	1017	1013
27	-3.5	-8.7	-8.5	-19.8	-6.0	-14.3	0.0	24.0	0.0	0.0		8	95	91	1016	1013
28	-1.2	-10.3	-3.7	-19.8	-2.5	-15.1	0.0	20.5	0.0	0.2		8	96	95	1016	1013
29	-2.9	-9.8	-7.2	-20.6	-5.1	-15.2	0.0	23.1	0.0	0.1		8	96	93	1018	1008
30	0.2	-7.3	-9.0	-18.2	-4.4	-12.8	0.0	22.4	0.0	2.3	snow	10	94	63	1014	1006
31	3.5	-8.6	-8.7	-17.8	-2.6	-13.2	0.0	20.6	0.0	0.0		11	79	52	1010	1002
Total							0.0	966.6	0.0	9.7			Extreme / Date	Extreme / Date	Extreme / Date	Extreme / Date
Avg	-8.9	-9.8	-17.4	-19.7	-13.2	-14.7	1981-2010 Normal			15.5	Normal					
Extreme Date	4.0		-35.5				0.0	1015.1	0.0	9.7	Cumulative		96	52	1034	988
	4		16							15.5	Cumulative Normal		28	31	15	1

Note: Red numbers indicate manual calculation; Red cell indicate data not available

SRC proudly recognizes the following CRS supporters:

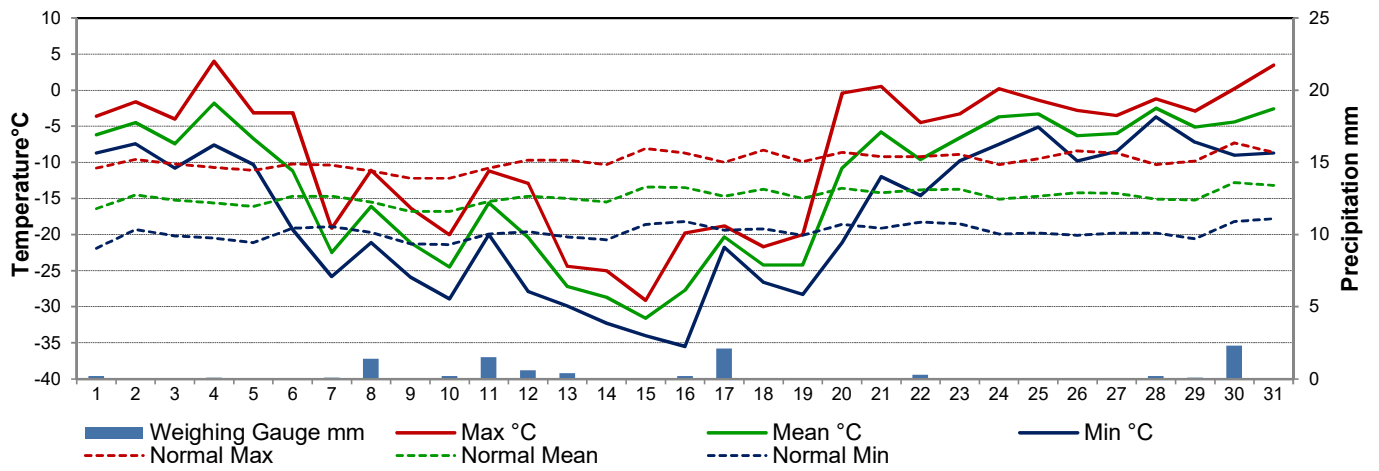


Agriculture and Agri-Food Canada

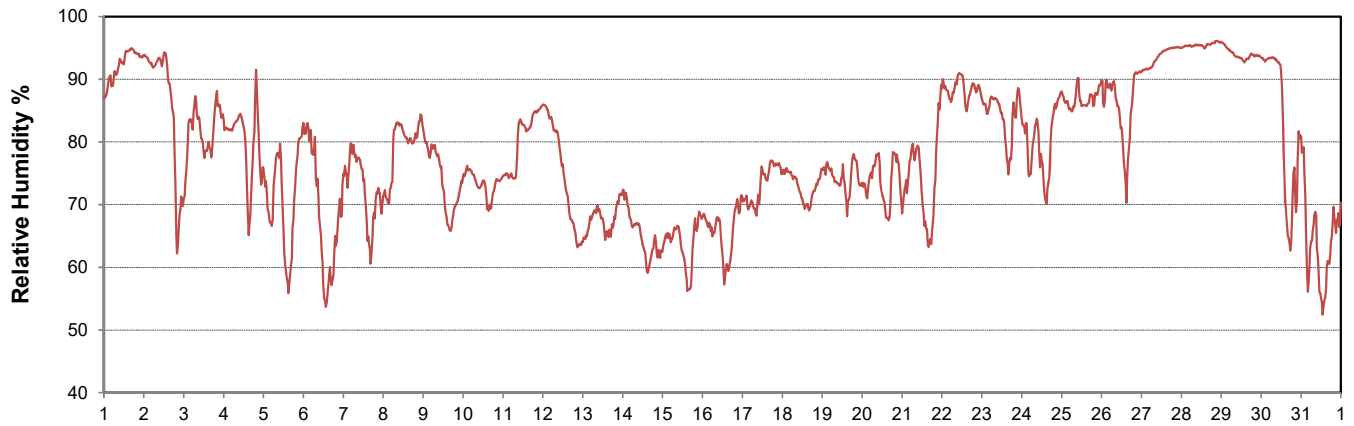
Agriculture et Agroalimentaire Canada



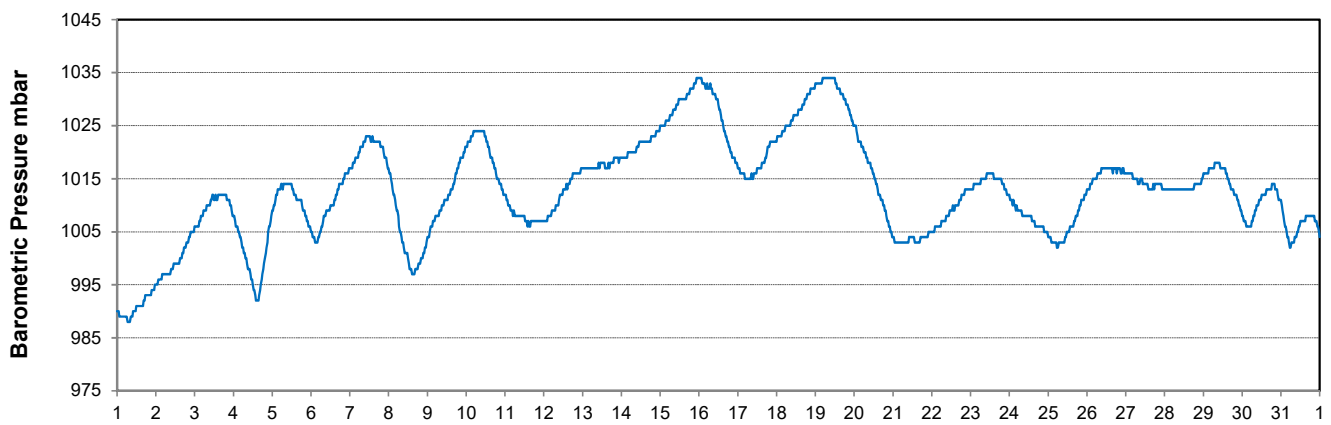
Temperature and Precipitation for January 2020



Relative Humidity for January 2020



Barometric Pressure Corrected to Sea Level for January 2020





SRC CLIMATE REFERENCE STATION DAILY DATA REPORT

SASKATOON STATION 4057180

52°09' N 106°36' W 497 m asl Estab. 1963

Preliminary **JANUARY 2020**

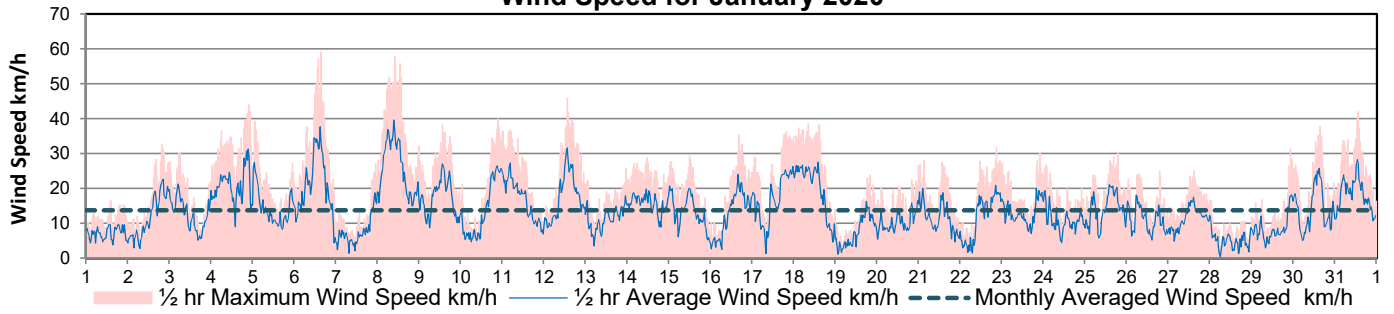
Day	Wind Gust			Soil Temperatures at 0900hrs								Radiation				
	Max	Direction	Time	Surface	5 cm	10 cm	20 cm	50 cm	100 cm	150 cm	300 cm	Bright Sunshine	Possible	% Possible	Global	Diffuse
	km/h			°C	°C	°C	°C	°C	°C	°C	°C	hours	hours		MJ/m ²	MJ/m ²
1	16.6	WNW	13:57	-10.5	-5.0	-4.5	-4.0	-2.0	1.5	3.0	5.5	0.0	7.8	0.0	1.5	1.2
2	32.7	WNW	19:47	-3.5	-4.0	-4.0	-3.5	-1.5	1.5	3.0	5.5	0.0	7.9	0.0	1.1	0.9
3	30.4	WNW	5:19	-4.5	-4.0	-3.5	-3.5	-1.5	1.5	3.0	5.5	0.9	7.9	11.4	1.9	1.5
4	44.0	NW	21:55	-6.5	-4.0	-3.5	-3.5	-1.5	1.5	3.0	5.5	2.1	7.9	26.6	2.7	1.6
5	39.2	WNW	1:13	-9.5	-4.0	-3.5	-3.0	-1.5	1.5	3.0	5.5	7.5	7.9	94.7	4.1	0.7
6	59.1	WNW	15:13	-5.0	-4.0	-3.5	-3.0	-1.5	1.5	3.0	5.5	6.6	7.9	83.1	4.0	1.0
7	27.2	SE	22:30	-30.0	-6.0	-5.0	-4.0	-1.5	1.5	3.0	5.5	6.9	8.0	86.6	6.1	1.0
8	57.9	ESE	9:47	-14.0	-7.0	-6.5	-5.0	-1.5	1.5	3.0	5.5	0.0	8.0	0.0	1.7	1.4
9	38.1	WNW	13:02	-19.0	-6.0	-5.5	-5.0	-2.0	1.5	3.0	5.5	5.3	8.0	66.0	3.9	1.4
10	39.9	SE	21:10	-28.5	-6.5	-6.0	-5.0	-2.0	1.5	2.5	5.0	7.4	8.1	91.7	6.3	1.1
11	36.6	SE	4:24	-14.0	-6.5	-6.0	-5.5	-2.0	1.0	2.5	5.0	0.4	8.1	4.9	2.5	2.0
12	45.9	WNW	23:25	-14.0	-6.0	-5.5	-5.0	-2.5	1.0	2.5	5.0	0.3	8.1	3.7	2.4	2.0
13	25.8	NW	13:11	-25.0	-6.0	-5.5	-5.0	-2.5	1.0	2.5	5.0	2.9	8.2	35.5	3.6	2.1
14	28.8	WNW	11:25	-30.5	-6.5	-6.0	-5.5	-2.5	1.0	2.5	5.0	7.4	8.2	90.0	5.1	1.2
15	29.3	W	11:58	-31.5	-7.0	-6.5	-6.0	-2.5	1.0	2.5	5.0	7.4	8.3	89.6	5.3	1.1
16	35.3	E	16:20	-25.5	-8.0	-7.0	-6.0	-2.5	1.0	2.5	5.0	0.0	8.3	0.0	2.5	2.1
17	36.2	WNW	19:13	-16.0	-7.5	-7.0	-6.5	-3.0	1.0	2.5	5.0	0.0	8.3	0.0	2.0	1.7
18	38.5	WNW	8:21	-23.5	-7.5	-7.0	-6.0	-3.0	0.5	2.5	5.0	7.3	8.4	87.1	5.0	1.4
19	23.8	SE	19:48	-26.5	-7.5	-7.0	-6.0	-3.0	0.5	2.0	5.0	6.9	8.4	81.9	6.2	1.4
20	26.6	S	23:59	-17.0	-7.5	-7.0	-6.5	-3.0	0.5	2.0	5.0	5.8	8.5	68.4	5.0	1.8
21	28.0	SW	2:52	-5.0	-6.5	-6.5	-6.0	-3.5	0.5	2.0	4.5	6.1	8.5	71.6	5.0	1.8
22	31.7	SE	20:41	-11.0	-6.0	-5.5	-5.5	-3.0	0.5	2.0	4.5	0.0	8.6	0.0	2.6	2.1
23	30.1	SSE	21:47	-5.0	-5.5	-5.0	-5.0	-3.0	0.5	2.0	4.5	3.5	8.6	40.6	3.9	1.9
24	26.7	SSE	1:08	-8.0	-5.0	-5.0	-4.5	-3.0	0.5	2.0	4.5	5.6	8.7	64.6	5.0	2.2
25	30.1	NNE	18:31	-4.5	-4.5	-4.5	-4.5	-2.5	0.5	2.0	4.5	2.1	8.7	24.1	3.8	2.8
26	25.0	SE	18:51	-5.5	-4.0	-4.0	-4.0	-2.5	0.5	2.0	4.5	1.7	8.8	19.4	4.1	3.0
27	25.0	SE	14:34	-6.0	-4.0	-3.5	-3.5	-2.0	0.5	2.0	4.5	0.0	8.8	0.0	2.3	1.9
28	16.5	ESE	0:06	-3.5	-3.5	-3.5	-3.5	-2.0	0.5	2.0	4.5	0.0	8.9	0.0	2.1	1.8
29	31.3	SE	22:14	-6.0	-3.5	-3.0	-3.0	-2.0	0.5	1.5	4.5	0.0	8.9	0.0	2.5	2.1
30	37.8	WNW	15:06	-6.5	-3.5	-3.0	-3.0	-2.0	0.5	1.5	4.5	4.4	9.0	48.9	2.2	0.7
31	42.0	WNW	13:06	-4.5	-3.5	-3.0	-3.0	-1.5	0.5	1.5	4.0	6.8	9.1	75.1	5.8	1.7
Total												105.3	258.8	40.7	112.2	50.6
Mean				-13.5	-5.5	-5.0	-4.6	-2.3	0.9	2.4	5.0	1981-2010 Normal for Radiation				
Extreme	59.1	WNW	15:13	1971- 2000 Normal for Soil Temperatures								101.0	259.0	39.0	126.9	68.7
Date	6				-8.4	-8.0	-7.1	-3.5	-0.1	1.7	4.6	No. of Bright Sunshine days = 22				

Note: Red numbers indicate manual calculation; Red cell indicate data not available

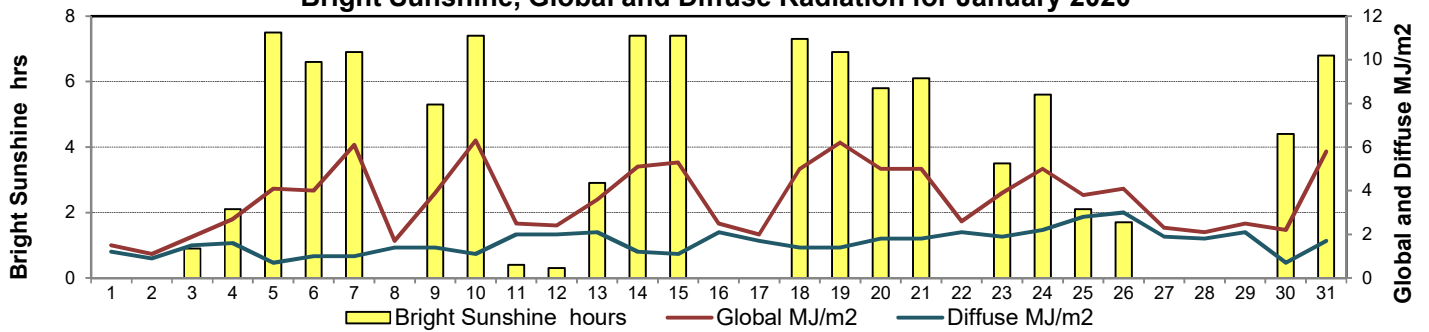
SRC proudly recognizes the following CRS supporters:



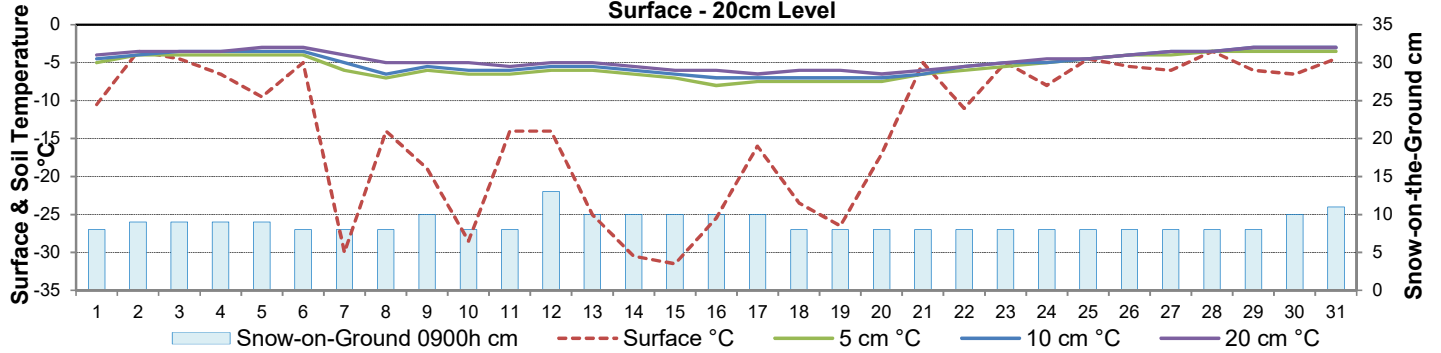
Wind Speed for January 2020



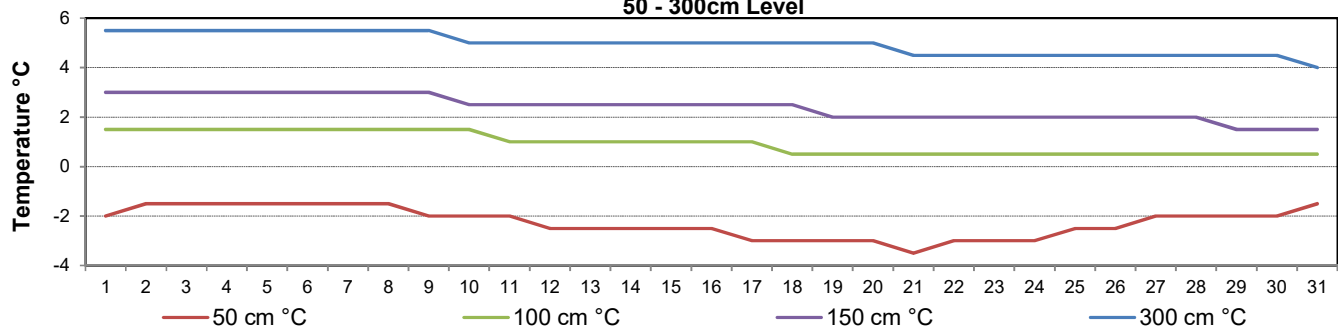
Bright Sunshine, Global and Diffuse Radiation for January 2020



**Soil Temperatures for January 2020
Surface - 20cm Level**



**Soil Temperatures for January 2020
50 - 300cm Level**





SRC CLIMATE REFERENCE STATION DAILY DATA REPORT

SASKATOON STATION 4057180

52°09' N 106°36' W 497 m asl Estab. 1963

Preliminary January 2020

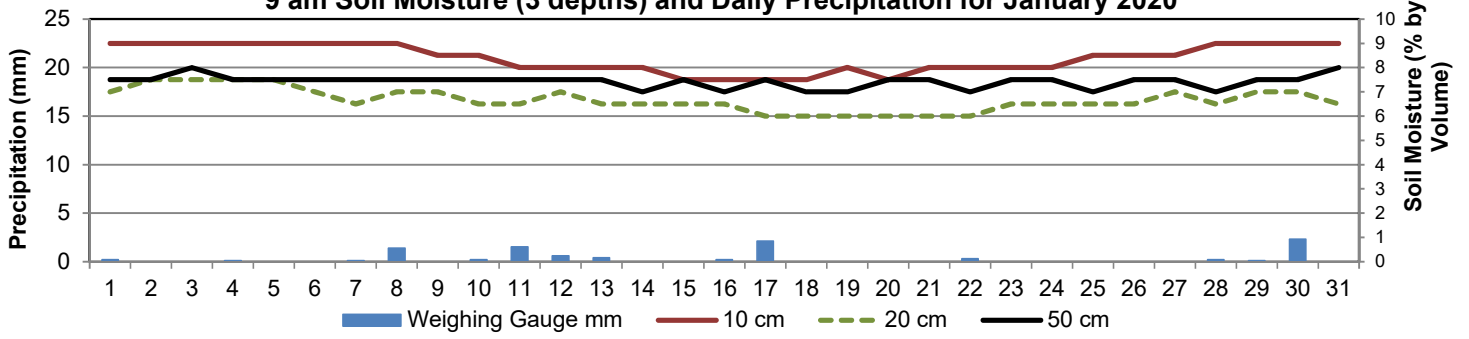
Day	2 meter Wind Speed			Soil Moisture at 0900 hrs (rounded to the 0.5%)														
	Daily Average	Max ½ hr Avg	½ hr Extreme Max	10 cm	20 cm	50 cm												
	km/h	km/h	km/h	% by volume (soil type is Loam (45.5% Sand, 41.1% Silt, 13.3% Clay))														
1	6.0	9.6	16.0	9.0	7.0	7.5												
2	10.0	17.3	27.0	9.0	7.5	7.5												
3	10.0	16.7	24.7	9.0	7.5	8.0												
4	16.0	24.5	35.0	9.0	7.5	7.5												
5	11.0	21.8	31.6	9.0	7.5	7.5												
6	16.0	29.7	48.3	9.0	7.0	7.5												
7	6.0	15.5	22.4	9.0	6.5	7.5												
8	21.0	32.3	51.7	9.0	7.0	7.5												
9	14.0	21.8	32.1	8.5	7.0	7.5												
10	10.0	20.5	33.3	8.5	6.5	7.5												
11	14.0	23.1	33.3	8.0	6.5	7.5												
12	15.0	26.1	36.8	8.0	7.0	7.5												
13	10.0	15.2	23.5	8.0	6.5	7.5												
14	13.0	16.6	25.2	8.0	6.5	7.0												
15	11.0	17.5	24.1	7.5	6.5	7.5												
16	11.0	20.2	30.4	7.5	6.5	7.0												
17	14.0	22.1	31.0	7.5	6.0	7.5												
18	17.0	22.9	33.9	7.5	6.0	7.0												
19	5.0	12.0	18.3	8.0	6.0	7.0												
20	6.0	12.0	20.0	7.5	6.0	7.5												
21	9.0	17.1	24.7	8.0	6.0	7.5												
22	10.0	16.5	29.8	8.0	6.0	7.0												
23	10.0	13.8	22.4	8.0	6.5	7.5												
24	8.0	13.6	21.8	8.0	6.5	7.5												
25	11.0	16.4	24.1	8.5	6.5	7.0												
26	9.0	13.6	22.4	8.5	6.5	7.5												
27	9.0	12.2	20.6	8.5	7.0	7.5												
28	4.0	10.2	14.3	9.0	6.5	7.0												
29	6.0	10.2	16.0	9.0	7.0	7.5												
30	10.0	21.0	29.3	9.0	7.0	7.5												
31	14.0	0.0	37.0	9.0	6.5	8.0												
Total																		
Mean				8	7	7.4												
Extreme	21.0	32.3	51.7	9	7.5	8												
Date	8	8	8	1	2	3												

Note: Red numbers indicate manual calculation; Red cell indicate data not available

SRC proudly recognizes the following CRS supporters:



9 am Soil Moisture (3 depths) and Daily Precipitation for January 2020





SRC CLIMATE REFERENCE STATION DAILY DATA REPORT

SASKATOON STATION 4057180

52°09' N 106°36' W 497 m asl Estab. 1963

Preliminary JANUARY 2020

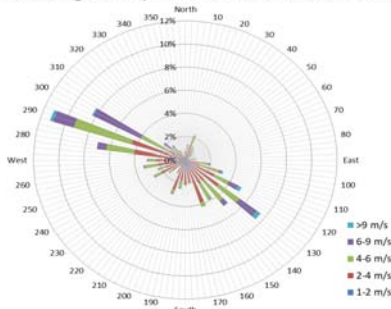
Extreme Records for January

Max/Min Temperature °C					Precipitation - Monthly mm					Wind Monthly km/h				CRS Bright Sunshine - Monthly			
S'toon Area	Date	Site	S'toon CRS	Date	S'toon Area	Date	Site	S'toon CRS	Date	S'toon Airport	Date	S'toon CRS**	Date	Hours	Year	No. of Days	Year
11.0	23/1980	SWT	8.1	15/2014	66.1	1911	SE	48.6	1969	111	11 ^W 1986	109	1986	146.9	1979	30	1993
-48.9	31/1893	SM	-43.9	*29/1969	0.0	2001, '89-'12	SWT SC SE	2.6	2001					45.5	2004	15	1995

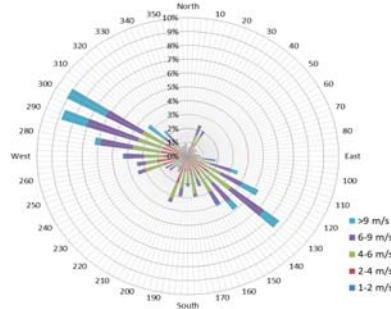
**1975 forward * more than one year

Notable Events for CRS Saskatoon - January						Saskatoon Area Stations			Glossary	
Element	Type	Day	New Record	Old Record	Year	Station	Operational Period	Symbol	Definition	
Temperature	Lowest Maximum Daily	15	-29.1	-28.0	1982	SM	NWMP c. 1892-1901	T	Trace of precipitation	
						SE	Eby 1901-1941	Normal	30 year average beginning with the decade	
						US	Univ. of Sask. 1915-1964	SOG	Depth of snow-on-the-ground in cm	
						S	Saskatoon 1941-1942	na	not available	
						SA	Saskatoon A 1942 -	Degree-days		
						NRC	Nat. Res. Council 1952-1966	Tm	Mean Temperature	
						SRC	Sask. Res. Council 1963-	Growing	(Tm-5°C); if Tm ≤ 5°C then GDD = 0	
						SWT	S'toon Water Treatment Plant 1974 -	Heating	(18°C-Tm); if Tm ≤ 18°C then HDD = 0	
						SC	S'toon Central Ave 1974-1989	Cooling	(Tm-18°C); if Tm ≥ 18°C then CDD = 0	
						S1	Saskatoon 1 1976-1978	Extreme Cooling	(Tm-24°C); if Tm ≥ 24°C then CDD = 0	
S2	Saskatoon 2 1977-1990	Manual Snow Depths (average of 3 meter sticks located inside climate station compound)								
K	S'toon Kernen Farm 1993-2004	Jan 5	9cm							
KCS	S'toon Kernen Farm CS 1996-	Jan 15	12cm							
RCS	Environment Canada 2008-	Jan 31	14cm							
SF	Sutherland Forestry 1943-1970									

10 minute Average Wind Speed and Direction Saskatoon Jan 2020



1/2 hr Maximum Wind Speed and Direction Saskatoon Jan 2020



SRC proudly recognizes the following CRS supporters:



Agriculture and Agri-Food Canada / Agriculture et Agroalimentaire Canada

