



SRC CLIMATE REFERENCE STATION DAILY DATA REPORT

SASKATOON STATION 4057180

52°09' N 106°36' W 497 m asl Estab. 1963

Preliminary JANUARY 2021

Day	Temperature						Degree-days			Precipitation			Relative Humidity		Station Pressure (sea level)	
	Max	Normal Max	Min	Normal Min	Mean	Normal Mean	Growing	Heating	Cooling	Weighing Gauge	Notes	Snow-on-Ground 0900h	Max ½ hr Avg	Min ½ hr Avg	Max ½ hr Avg	Min ½ hr Avg
	°C	1991-2020	°C	1991-2020	°C	1991-2020	5°C base	18°C base	18°C base	mm		cm	%	%	mbar	mbar
1	-6.9	-10.3	-13.5	-21.3	-10.2	-15.8	0.0	28.2	0.0	0.0		11	85	67	1013	1002
2	4.3	-9.3	-10.3	-19.2	-3.0	-14.3	0.0	21.0	0.0	0.0		11	89	63	1001	993
3	3.3	-9.9	-2.1	-19.5	0.6	-14.7	0.0	17.4	0.0	0.0		11	80	67	1001	990
4	-2.0	-10.7	-9.4	-19.5	-5.7	-15.1	0.0	23.7	0.0	0.1		11	80	58	1008	1001
5	-1.2	-10.7	-8.1	-19.6	-4.7	-15.2	0.0	22.7	0.0	0.2	rain/ freezing rain/snow	11	90	74	1015	1001
6	1.7	-9.3	-10.6	-18.3	-4.5	-13.8	0.0	22.5	0.0	0.0		11	88	65	1015	1008
7	0.2	-9.7	-8.4	-18.9	-4.1	-14.3	0.0	22.1	0.0	0.0		10	86	59	1027	1014
8	-4.0	-10.7	-12.2	-19.3	-8.1	-15.0	0.0	26.1	0.0	0.0		10	89	68	1027	1024
9	-5.1	-11.5	-13.8	-20.0	-9.5	-15.8	0.0	27.5	0.0	0.1	Frost	11	90	72	1026	1020
10	-6.4	-12.2	-11.8	-20.6	-9.1	-16.4	0.0	27.1	0.0	0.0	Frost	11	91	88	1020	1012
11	-2.5	-11.8	-12.4	-20.3	-7.5	-16.1	0.0	25.5	0.0	0.0		11	88	73	1014	1006
12	-0.2	-12.0	-7.8	-21.7	-4.0	-16.9	0.0	22.0	0.0	0.0		11	85	60	1008	998
13	7.3	-11.4	-7.7	-21.2	-0.2	-16.3	0.0	18.2	0.0	2.5	rain/ freezing rain/snow	11	97	65	1002	980
14	-0.2	-11.2	-5.9	-20.2	-3.1	-15.7	0.0	21.1	0.0	0.0		10	83	69	1023	1003
15	-5.8	-8.6	-12.7	-19.5	-9.3	-14.1	0.0	27.3	0.0	0.0		10	90	81	1024	1012
16	1.1	-9.7	-9.9	-19.5	-4.4	-14.6	0.0	22.4	0.0	0.0		10	81	63	1014	1010
17	-3.1	-10.0	-12.1	-19.2	-7.6	-14.6	0.0	25.6	0.0	3.9	snow	10	93	66	1014	1007
18	0.2	-8.2	-15.6	-18.5	-7.7	-13.3	0.0	25.7	0.0	0.3	light snow	14	93	77	1024	1012
19	1.8	-8.5	-11.9	-18.6	-5.1	-13.6	0.0	23.1	0.0	0.0		14	86	63	1025	993
20	3.6	-9.1	-8.4	-18.6	-2.4	-13.9	0.0	20.4	0.0	0.2	very light snow	11	88	61	1009	993
21	-7.8	-8.9	-13.8	-17.7	-10.8	-13.3	0.0	28.8	0.0	0.1	very light snow	10	87	67	1019	1010
22	-5.1	-8.4	-11.0	-17.1	-8.1	-12.8	0.0	26.1	0.0	1.1	light snow	10	91	70	1017	1008
23	-8.7	-8.0	-29.2	-17.5	-19.0	-12.8	0.0	37.0	0.0	0.3	very light snow	15	91	66	1020	1009
24	-24.8	-8.7	-34.2	-17.1	-29.5	-12.9	0.0	47.5	0.0	0.0		14	74	68	1021	1019
25	-26.6	-8.2	-36.2	-16.8	-31.4	-12.5	0.0	49.4	0.0	0.0		14	73	64	1025	1021
26	-21.4	-8.5	-31.3	-18.5	-26.4	-13.5	0.0	44.4	0.0	0.0		14	74	69	1024	1021
27	-14.9	-7.9	-22.9	-17.6	-18.9	-12.8	0.0	36.9	0.0	0.0		13	80	70	1021	1018
28	-9.9	-9.3	-16.5	-18.9	-13.2	-14.1	0.0	31.2	0.0	0.1	light snow	11	84	72	1018	1014
29	-8.6	-8.8	-15.9	-20.1	-12.3	-14.5	0.0	30.3	0.0	0.7	light snow	12	87	78	1014	1009
30	-7.6	-7.3	-14.2	-16.2	-10.9	-11.8	0.0	28.9	0.0	1.0	light snow	11	87	78	1020	1011
31	-9.6	-6.9	-14.7	-17.6	-12.2	-12.2	0.0	30.2	0.0	0.2	light snow	11	90	74	1023	1019
Total							0.0	860.3	0.0	10.8			Extreme / Date	Extreme / Date	Extreme / Date	Extreme / Date
Avg	-5.1	-9.5	-14.3	-19.0	-9.8	-14.3	1991-2020 Normal			13.2	1991-2020 Normal					
Extreme Date	7.3		-36.2				0.0	1000.6	0.0	10.8	Cumulative		97	58	1027	980
Date	13		25							13.2	Cumulative Normal		13	4	7	13

Note: Red numbers indicate manual calculation; Red cell indicate data not available

SRC proudly recognizes the following CRS supporters:

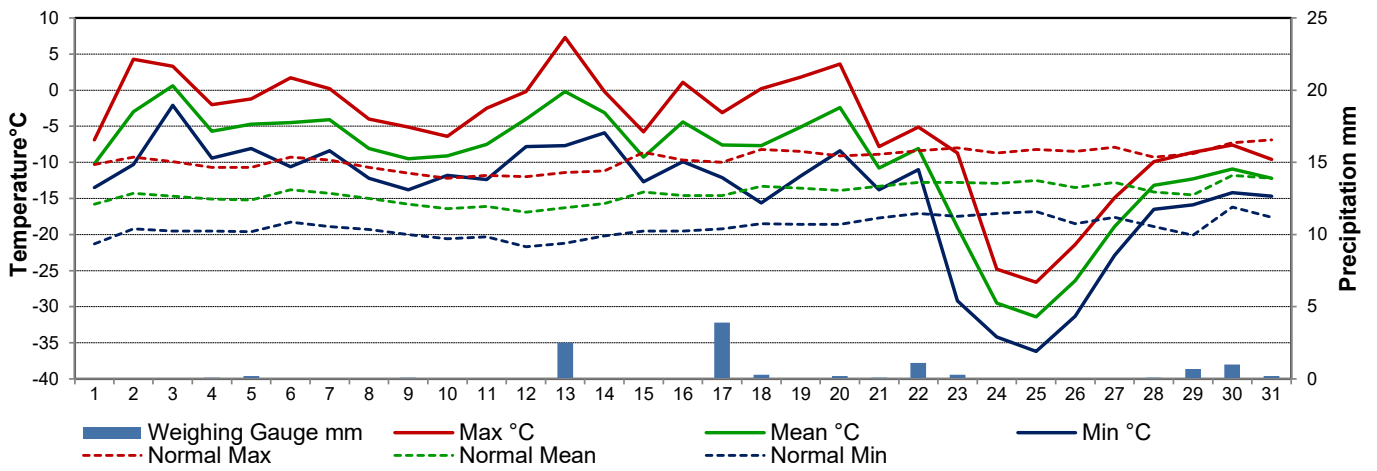


Agriculture and Agri-Food Canada

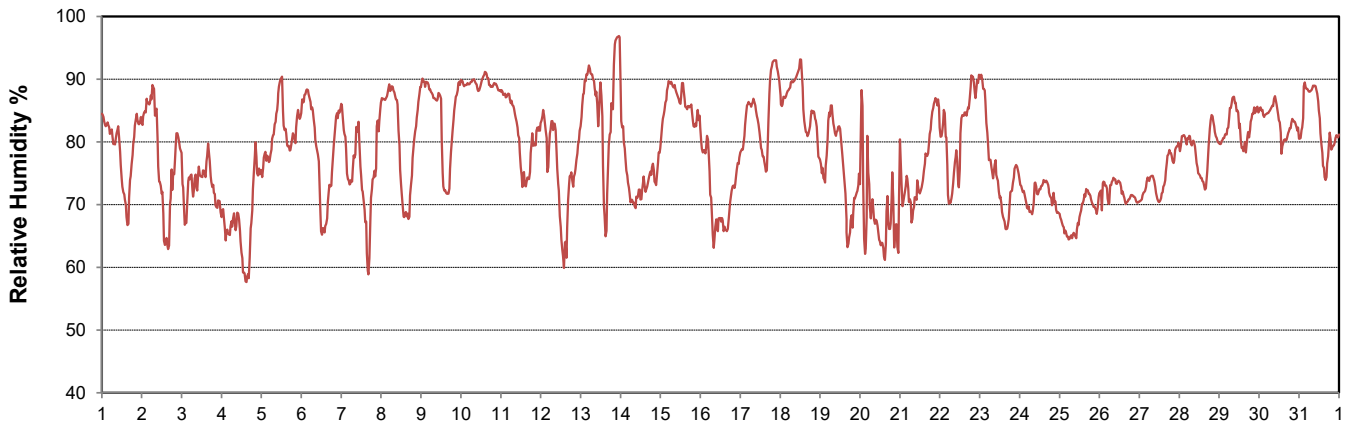
Agriculture et Agroalimentaire Canada



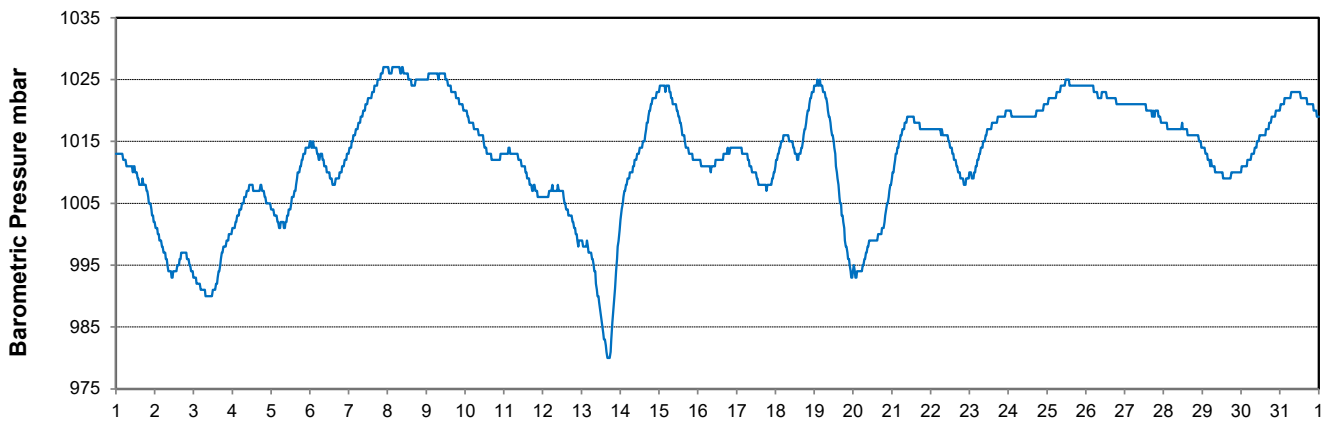
Temperature and Precipitation for January 2021



Relative Humidity for January 2021



Barometric Pressure Corrected to Sea Level for January 2021





SRC CLIMATE REFERENCE STATION DAILY DATA REPORT

SASKATOON STATION 4057180

52°09' N 106°36' W 497 m asl Estab. 1963

Preliminary JANUARY 2021

Day	Wind Gust			Wind Speed (10 meters) Daily Average	Soil Temperatures at 0900hrs								Radiation				
	Max	Direction	Time		Surface	5 cm	10 cm	20 cm	50 cm	100 cm	150 cm	300 cm	Bright Sunshine	Possible	% Possible	Global	Diffuse
	km/h			km/h	°C	°C	°C	°C	°C	°C	°C	°C	hours	hours		MJ/m ²	MJ/m ²
1	25.3	SSW	9:02	11.1	-13.5	-3.0	-2.0	-1.5	1.0	4.0	5.0	7.0	6.8	7.8	86.7	3.7	0.9
2	50.5	WSW	11:20	15.1	-4.0	-3.0	-2.5	-1.5	1.0	4.0	5.0	6.5	4.6	7.9	58.5	3.3	1.2
3	36.5	NW	12:52	17.8	-0.5	-2.5	-2.0	-1.5	1.0	4.0	5.0	6.5	1.4	7.9	17.8	2.7	1.7
4	27.9	SSE	21:54	13.3	-8.5	-2.0	-1.5	-1.5	1.0	3.5	5.0	6.5	7.4	7.9	93.6	3.9	0.7
5	39.6	SE	4:01	19.1	-3.5	-2.0	-1.5	-1.0	1.0	3.5	5.0	6.5	0.0	7.9	0.0	1.7	1.4
6	30.6	S	12:10	13.2	-9.0	-2.0	-1.5	-1.0	1.0	3.5	4.5	6.5	1.9	8.0	23.9	2.9	2.1
7	23.4	NW	14:33	5.1	-8.5	-1.5	-1.5	-1.0	1.0	3.5	4.5	6.5	6.5	8.0	81.4	3.0	1.1
8	21.2	SSW	14:26	8.1	-14.5	-1.5	-1.0	-1.0	1.0	3.5	4.5	6.5	7.5	8.0	93.5	5.6	0.9
9	22.2	S	15:37	10.7	-14.5	-2.0	-1.5	-1.0	1.0	3.5	4.5	6.5	7.7	8.1	95.5	5.7	1.0
10	20.8	WSW	0:02	7.9	-10.0	-2.5	-2.0	-1.5	1.0	3.5	4.5	6.5	2.4	8.1	29.7	3.0	1.8
11	26.6	SW	18:56	12.3	-12.5	-2.5	-2.0	-1.5	1.0	3.5	4.5	6.5	1.6	8.1	19.7	2.8	1.8
12	27.7	WNW	3:41	12.2	-9.5	-2.5	-2.0	-1.5	0.5	3.5	4.5	6.5	6.7	8.2	82.1	3.9	1.1
13	87.3	NNW	20:17	23.8	-5.5	-2.5	-2.0	-1.5	0.5	3.5	4.5	6.0	3.0	8.2	36.6	2.9	1.3
14	58.9	NNW	17:23	32.4	-1.5	-1.5	-1.5	-1.0	0.5	3.5	4.5	6.0	0.3	8.2	3.6	1.8	1.4
15	28.4	SE	16:09	9.3	-7.5	-1.5	-1.0	-0.5	1.0	3.5	4.5	6.0	0.1	8.3	1.2	2.4	1.8
16	46.9	WNW	13:59	19.1	-6.5	-1.5	-1.0	-1.0	1.0	3.5	4.5	6.0	6.4	8.3	76.8	4.1	1.4
17	28.5	NNE	23:48	8.5	-8.0	-2.0	-1.5	-1.0	1.0	3.5	4.5	6.0	0.0	8.4	0.0	2.4	2.0
18	57.4	N	16:51	18.9	-6.0	-2.0	-1.5	-1.0	1.0	3.0	4.5	6.0	0.0	8.4	0.0	1.7	1.4
19	49.0	SW	19:17	18.4	-8.5	-1.5	-1.0	-1.0	1.0	3.0	4.0	6.0	2.1	8.5	24.8	3.8	2.3
20	78.1	WNW	6:28	37.2	-2.0	-1.5	-1.0	-1.0	1.0	3.0	4.0	6.0	5.0	8.5	58.8	4.8	1.6
21	45.5	N	0:14	16.2	-9.0	-1.0	-1.0	-0.5	1.0	3.0	4.0	6.0	0.0	8.6	0.0	2.7	2.2
22	29.8	W	20:57	11.7	-7.5	-1.5	-1.0	-3.0	1.0	3.0	4.0	6.0	0.1	8.6	1.2	3.0	2.4
23	48.3	N	5:12	16.7	-11.0	-1.5	-1.0	-1.0	1.0	3.0	4.0	6.0	8.0	8.7	92.5	6.3	1.3
24	25.2	SE	10:03	9.3	-24.5	-2.5	-1.5	-1.0	1.0	3.0	4.0	6.0	8.0	8.7	91.8	7.6	1.3
25	22.2	NE	16:00	9.2	-26.5	-4.0	-3.0	-2.0	0.5	3.0	4.0	6.0	7.8	8.8	89.0	7.4	1.7
26	42.8	SE	21:01	16.2	-22.0	-5.5	-4.5	-3.0	0.0	3.0	4.0	6.0	6.0	8.8	68.1	6.9	2.4
27	41.8	SE	21:03	23.8	-20.0	-6.0	-5.0	-4.0	-0.5	3.0	4.0	5.5	6.9	8.9	77.9	6.6	1.6
28	39.0	SE	1:28	16.9	-15.0	-6.0	-5.5	-4.0	-0.5	3.0	4.0	5.5	7.7	8.9	86.3	6.1	1.5
29	22.0	ESE	3:17	7.6	-10.0	-6.0	-5.0	-4.0	-1.0	2.5	4.0	5.5	3.8	9.0	42.4	5.1	3.5
30	12.5	W	22:08	6.7	-10.0	-5.5	-5.0	-4.0	-1.0	2.5	4.0	5.5	0.0	9.0	0.0	3.7	3.1
31	30.7	SE	21:06	11.1	-8.5	-5.0	-4.5	-4.0	-1.0	2.5	4.0	5.5	3.4	9.1	37.4	5.2	2.8
Total													123.1	259.6	47.4	126.7	52.7
Mean				14.8	-10.3	-2.8	-2.2	-1.7	0.6	3.3	4.4	6.1	1991-2020 Normal				
Extreme	87.3	NNW	20:17		1971-2000 Normal for Soil Temperatures								105.3	259.1	40.6	121.8	65.6
Date	13					-8.4	-8.0	-7.1	-3.5	-0.1	1.7	4.6	No. of Bright Sunshine days = 26				

Note: Red numbers indicate manual calculation; Red cell indicate data not available

SRC proudly recognizes the following CRS supporters:

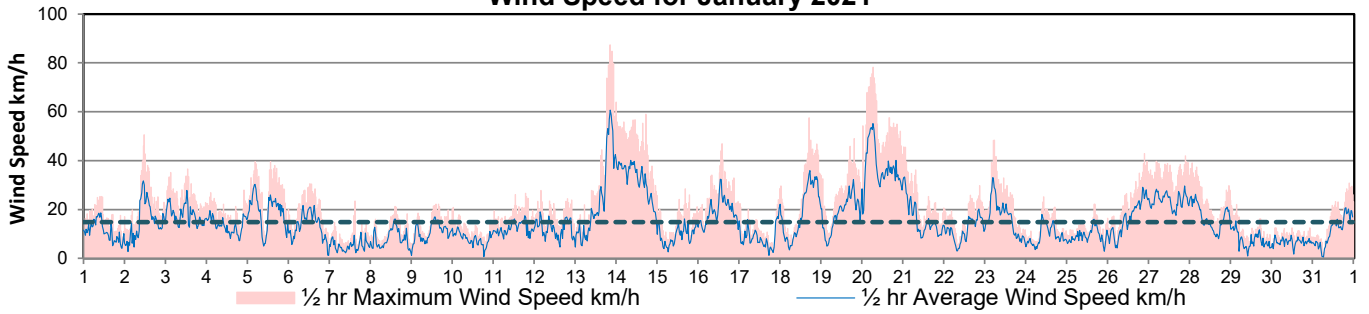


Agriculture and Agri-Food Canada

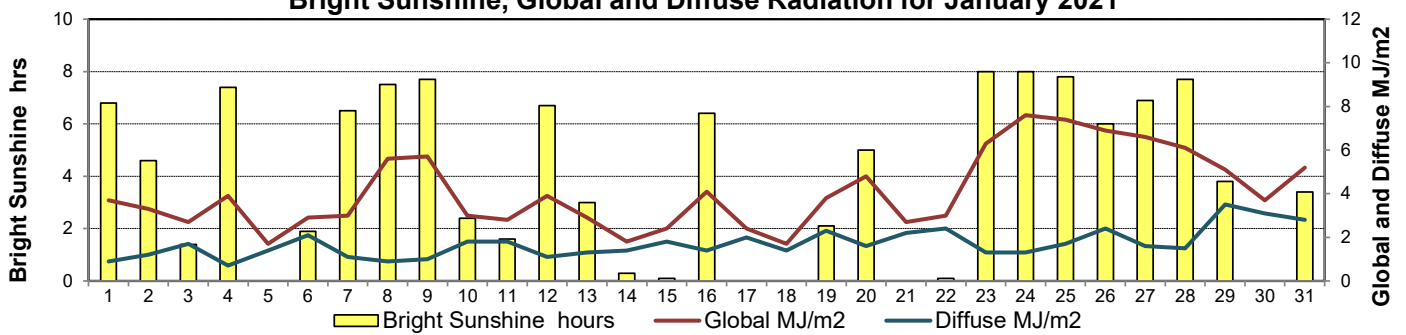
Agriculture et Agroalimentaire Canada



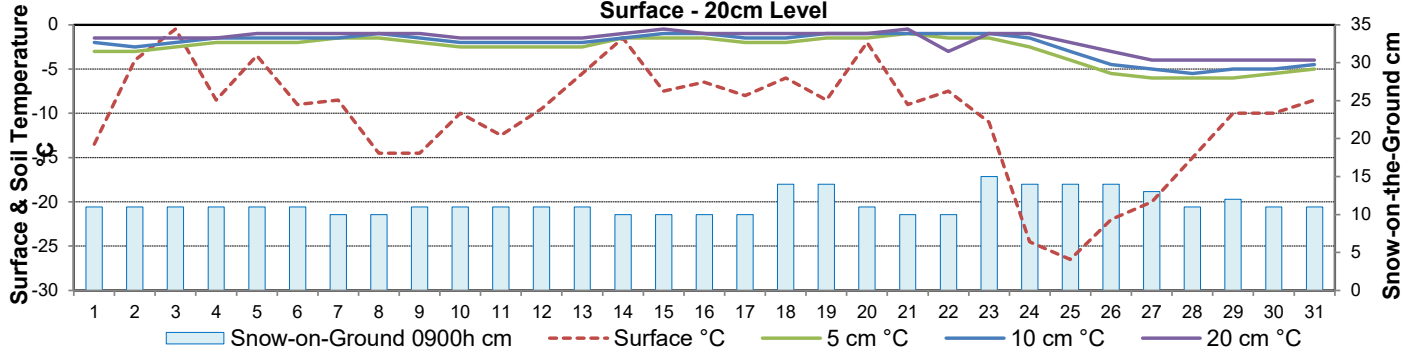
Wind Speed for January 2021



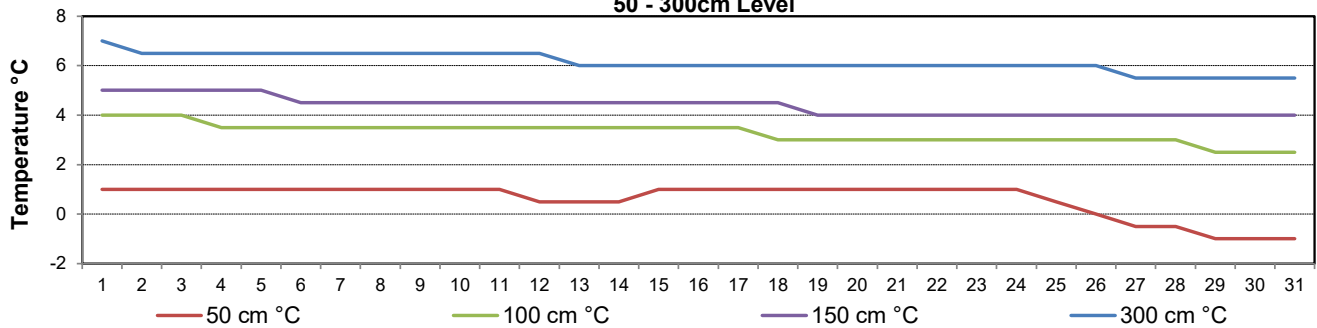
Bright Sunshine, Global and Diffuse Radiation for January 2021



Soil Temperatures for January 2021 Surface - 20cm Level



Soil Temperatures for January 2021 50 - 300cm Level





SRC CLIMATE REFERENCE STATION DAILY DATA REPORT

SASKATOON STATION 4057180

52°09' N 106°36' W 497 m asl Estab. 1963

Preliminary **JANUARY 2021**

Extreme Records for January

Max/Min Temperature °C			Precipitation - Monthly mm				Wind Monthly km/h				CRS Bright Sunshine - Monthly						
S'toon Area	Date	Site	S'toon CRS	Date	S'toon Area	Date	Site	S'toon CRS	Date	S'toon Airport	Date	S'toon CRS**	Date	Hours	Year	No. of Days	Year
11.0	23/1980	SWT	8.1	15/2014	66.1	1911	SE	48.6	1969	111	11 ^W 1986	109	1986	146.9	1979	30	1993
-48.9	31/1893	SM	-43.9	*29/1969	0.0	2001, '89-'12	SWT SC SE	2.6	2001					45.5	2004	15	1995

**1975 forward * more than one year

Notable Events for CRS Saskatoon - January						Saskatoon Area Stations			Glossary	
Element	Type	Day	New Record	Old Record	Year	Station	Operational Period	Symbol	Description	
Temperature	Highest Maximum Daily	13	7.3	3.5	1986	SM	NWMP c. 1892-1901	T	Trace of precipitation	
	Highest Mean Daily	13	-0.2	-0.8	1986	SE	Eby 1901-1941	Normal	30 year average beginning with the decade	
Heating degree-days	Lowest Daily	13	18.2	18.8	1986	US	Univ. of Sask. 1915-1964	SOG	Depth of snow-on-the-ground in cm	
						S	Saskatoon 1941-1942	na	not available	
						SA	Saskatoon A 1942 -	Degree-days		
						NRC	Nat. Res. Council 1952-1966	Tm	Mean Temperature	
						SRC	Sask. Res. Council 1963-	Growing	(Tm-5°C); if Tm ≤ 5°C then GDD = 0	
						SWT	S'toon Water Treatment Plant 1974 -	Heating	(18°C-Tm); if Tm ≤ 18°C then HDD = 0	
						SC	S'toon Central Ave 1974-1989	Cooling	(Tm-18°C); if Tm ≥ 18°C then CDD = 0	
						S1	Saskatoon 1 1976-1978	Extreme Cooling	(Tm-24°C); if Tm ≥ 24°C then CDD = 0	
						S2	Saskatoon 2 1977-1990	January 13 - four seasons in one day - rain/freezing rain/sleet/snow/blowing snow/blizzard/sun Diffuse pyranometer shade ring fully automated 12:30pm January 29, 2021		
						K	S'toon Kernen Farm 1993-2004			
						KCS	S'toon Kernen Farm CS 1996-			
						RCS	Environment Canada 2008-			
						SF	Sutherland Forestry 1943-1970			

6th warmest January over the period of record
17th driest January over the period of record

SRC proudly recognizes the following CRS supporters:





SRC CLIMATE REFERENCE STATION DAILY DATA REPORT

SASKATOON STATION 4057180

52°09' N 106°36' W 497 m asl Estab. 1963

Preliminary **January 2021**

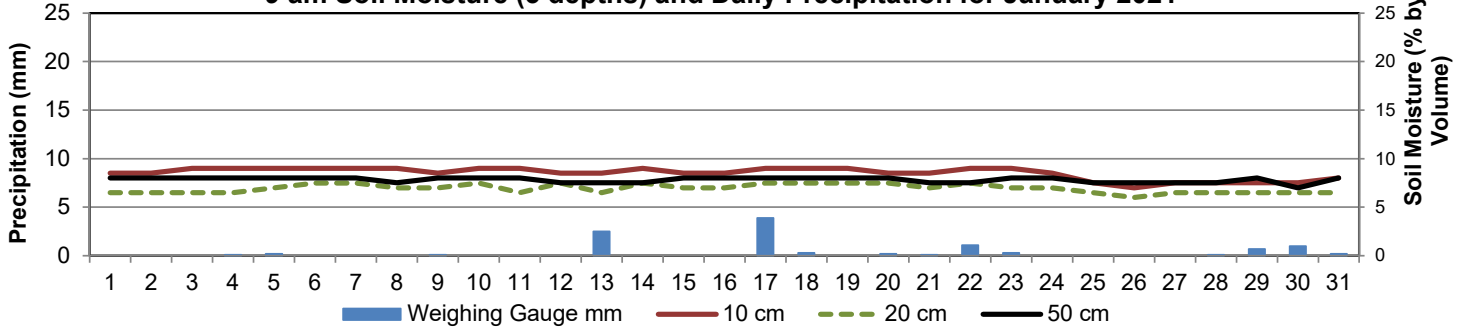
Day	2 meter Wind Speed			Soil Moisture at 0900 hrs (rounded to the 0.5%)														
	Daily Average	Max ½ hr Avg	½ hr Extreme Max	10 cm	20 cm	50 cm												
	km/h	km/h	km/h	% by volume (soil type is Loam (45.5% Sand, 41.1% Silt, 13.3% Clay))														
1	9.0	15.5	21.2	8.5	6.5	8.0												
2	12.0	27.4	40.8	8.5	6.5	8.0												
3	15.0	23.4	33.9	9.0	6.5	8.0												
4	11.0	16.9	24.7	9.0	6.5	8.0												
5	16.0	26.2	33.9	9.0	7.0	8.0												
6	10.0	18.7	28.1	9.0	7.5	8.0												
7	4.0	8.1	19.5	9.0	7.5	8.0												
8	5.0	14.4	20.0	9.0	7.0	7.5												
9	9.0	14.5	18.9	8.5	7.0	8.0												
10	7.0	11.8	19.5	9.0	7.5	8.0												
11	9.0	15.2	24.1	9.0	6.5	8.0												
12	9.0	14.8	23.5	8.5	7.5	7.5												
13	18.0	48.0	69.6	8.5	6.5	7.5												
14	26.0	32.8	50.6	9.0	7.5	7.5												
15	7.0	13.2	22.4	8.5	7.0	8.0												
16	15.0	26.6	36.8	8.5	7.0	8.0												
17	7.0	14.7	24.1	9.0	7.5	8.0												
18	16.0	29.0	47.7	9.0	7.5	8.0												
19	16.0	28.5	43.1	9.0	7.5	8.0												
20	31.0	45.5	68.4	8.5	7.5	8.0												
21	14.0	26.9	37.9	8.5	7.0	7.5												
22	10.0	17.2	24.7	9.0	7.5	7.5												
23	14.0	26.5	40.2	9.0	7.0	8.0												
24	8.0	13.8	23.5	8.5	7.0	8.0												
25	8.0	13.2	19.5	7.5	6.5	7.5												
26	14.0	22.7	35.6	7.0	6.0	7.5												
27	19.0	24.0	36.8	7.5	6.5	7.5												
28	13.0	20.2	35.0	7.5	6.5	7.5												
29	7.0	13.7	20.0	7.5	6.5	8.0												
30	6.0	8.4	12.0	7.5	6.5	7.0												
31	9.0	0.0	26.0	8.0	6.5	8.0												
Total																		
Mean				9	7	7.8												
Extreme	31.0	48.0	69.6	9	7.5	8												
Date	20	13	13	3	6	1												

Note: Red numbers indicate manual calculation; Red cell indicate data not available

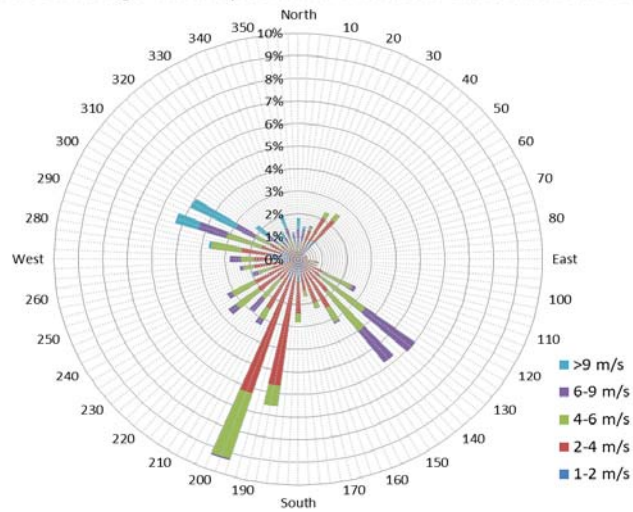
SRC proudly recognizes the following CRS supporters:



9 am Soil Moisture (3 depths) and Daily Precipitation for January 2021



10 minute Average Wind Speed and Direction Saskatoon Jan 2021



1/2 hr Maximum Wind Speed and Direction Saskatoon Jan 2021

