



SRC CLIMATE REFERENCE STATION DAILY DATA REPORT

SASKATOON STATION 4057180

52°09' N 106°36' W 497 m asl Estab. 1963

Preliminary JANUARY 2024

Day	Temperature						Degree-days			Precipitation			Relative Humidity		Station Pressure (sea level)	
	Max	Normal Max	Min	Normal Min	Mean	Normal Mean	Growing	Heating	Cooling	Geonor all-season ppt Gauge	Notes	Snow-on-Ground 0900h	Max ½ hr Avg	Min ½ hr Avg	Max ½ hr Avg	Min ½ hr Avg
	°C	1991-2020	°C	1991-2020	°C	1991-2020	5°C base	18°C base	18°C base	mm		cm	%	%	mbar	mbar
1	2.2	-10.3	-7.4	-21.3	-2.6	-15.8	0.0	20.6	0.0	0.0		-	87	58	1018	1010
2	-4.0	-9.3	-8.2	-19.2	-6.1	-14.3	0.0	24.1	0.0	0.0		-	88	68	1023	1018
3	-5.9	-9.9	-9.8	-19.5	-7.9	-14.7	0.0	25.9	0.0	0.0		0	83	68	1023	1015
4	-5.1	-10.7	-7.9	-19.5	-6.5	-15.1	0.0	24.5	0.0	0.0		0	91	76	1015	1011
5	-5.6	-10.7	-9.6	-19.6	-7.6	-15.2	0.0	25.6	0.0	2.9	snow	3	92	85	1013	1011
6	-8.1	-9.3	-13.9	-18.3	-11.0	-13.8	0.0	29.0	0.0	0.3	snow	4	91	84	1012	1007
7	-13.3	-9.7	-18.2	-18.9	-15.8	-14.3	0.0	33.8	0.0	2.1	snow	3	85	72	1020	1011
8	-15.3	-10.7	-23.2	-19.3	-19.3	-15.0	0.0	37.3	0.0	0.2	snow	6	81	77	1020	1009
9	-15.1	-11.5	-23.9	-20.0	-19.5	-15.8	0.0	37.5	0.0	2.6	snow	5	83	76	1009	991
10	-17.6	-12.2	-26.0	-20.6	-21.8	-16.4	0.0	39.8	0.0	1.1	snow	9	81	72	1015	996
11	-25.9	-11.8	-30.0	-20.3	-28.0	-16.1	0.0	46.0	0.0	0.7	snow	9	71	64	1026	1015
12	-29.9	-12.0	-35.9	-21.7	-32.9	-16.9	0.0	50.9	0.0	0.5	snow	8	67	57	1028	1025
13	-32.7	-11.4	-35.8	-21.2	-34.3	-16.3	0.0	52.3	0.0	0.3	snow	9	64	59	1030	1028
14	-28.7	-11.2	-36.4	-20.2	-32.6	-15.7	0.0	50.6	0.0	0.0		9	67	61	1030	1027
15	-25.3	-8.6	-31.1	-19.5	-28.2	-14.1	0.0	46.2	0.0	0.0		9	68	56	1031	1020
16	-18.5	-9.7	-33.0	-19.5	-25.8	-14.6	0.0	43.8	0.0	0.0		9	69	53	1020	1007
17	-18.3	-10.0	-26.6	-19.2	-22.5	-14.6	0.0	40.5	0.0	0.3	very light snow	9	76	53	1019	1007
18	-18.0	-8.2	-27.4	-18.5	-22.7	-13.3	0.0	40.7	0.0	0.0		9	75	69	1032	1020
19	-15.5	-8.5	-18.3	-18.6	-16.9	-13.6	0.0	34.9	0.0	0.0		7	80	72	1033	1023
20	-9.5	-9.1	-17.3	-18.6	-13.4	-13.9	0.0	31.4	0.0	0.0		7	77	60	1023	1005
21	-12.1	-8.9	-15.2	-17.7	-13.7	-13.3	0.0	31.7	0.0	3.5	snow	7	85	73	1013	1006
22	-10.7	-8.4	-15.4	-17.1	-13.1	-12.8	0.0	31.1	0.0	0.4	snow	10	85	75	1019	1013
23	0.0	-8.0	-10.7	-17.5	-5.4	-12.8	0.0	23.4	0.0	0.0		8	92	71	1013	1004
24	-6.7	-8.7	-10.1	-17.1	-8.4	-12.9	0.0	26.4	0.0	0.1	fog / rime & hoar frost	8	92	89	1013	1009
25	-2.9	-8.2	-12.3	-16.8	-7.6	-12.5	0.0	25.6	0.0	0.0	fog / rime frost	8	91	88	1012	1008
26	-0.2	-8.5	-13.4	-18.5	-6.8	-13.5	0.0	24.8	0.0	0.2		8	90	68	1018	1012
27	1.3	-7.9	-11.1	-17.6	-4.9	-12.8	0.0	22.9	0.0	0.0		7	90	67	1018	1013
28	2.8	-9.3	-7.5	-18.9	-2.4	-14.1	0.0	20.4	0.0	0.0		8	91	73	1017	1010
29	3.1	-8.8	-7.6	-20.1	-2.3	-14.5	0.0	20.3	0.0	0.0		7	91	65	1020	1012
30	9.2	-7.3	0.2	-16.2	4.7	-11.8	0.0	13.3	0.0	0.0		8	90	54	1011	1005
31	9.1	-6.9	-2.9	-17.6	3.1	-12.2	0.0	14.9	0.0	0.0		4	87	46	1012	1009
Total							0.0	990.2	0.0	15.2			Extreme / Date	Extreme / Date	Extreme / Date	Extreme / Date
Avg	-10.2	-9.5	-17.6	-19.0	-13.9	-14.3	1991-2020 Normal			13.2	1991-2020 Normal					
Extreme Date	9.2		-36.4				0.0	1000.6	0.0	15.2	Cumulative		92	46	1033	991
	30		14							13.2	Cumulative Normal		5	31	19	9

Note: Red numbers indicate manual calculation; Red cell indicate data not available

It has not been corrected for wind speed.

SRC proudly recognizes the following CRS supporters:

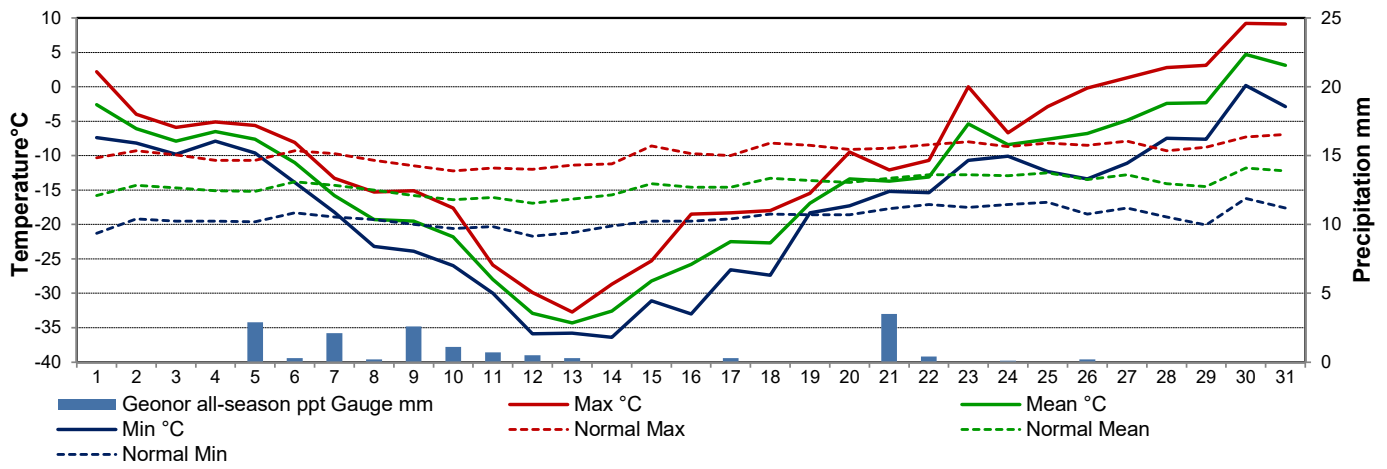


Agriculture and Agri-Food Canada

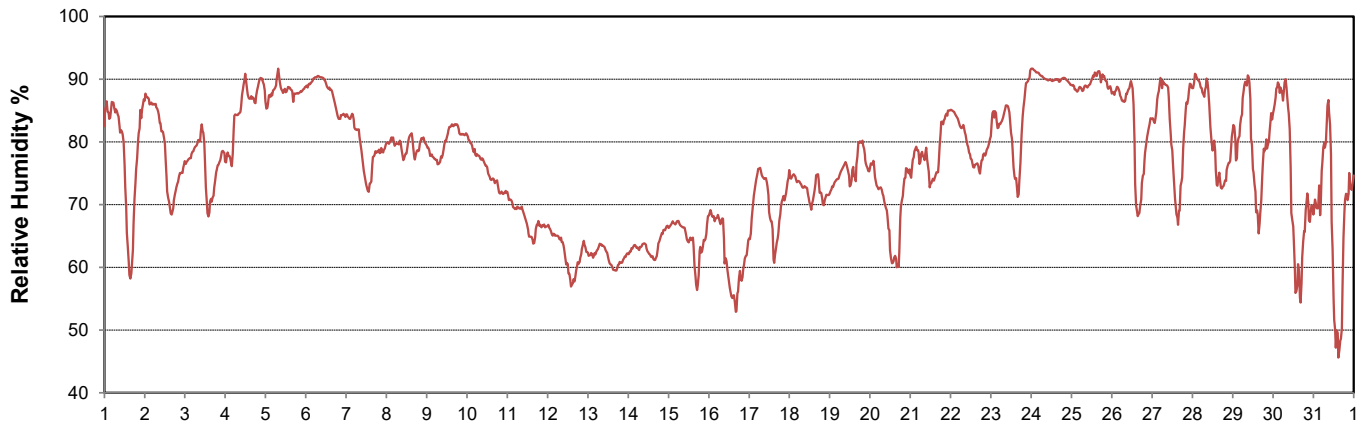
Agriculture et Agroalimentaire Canada



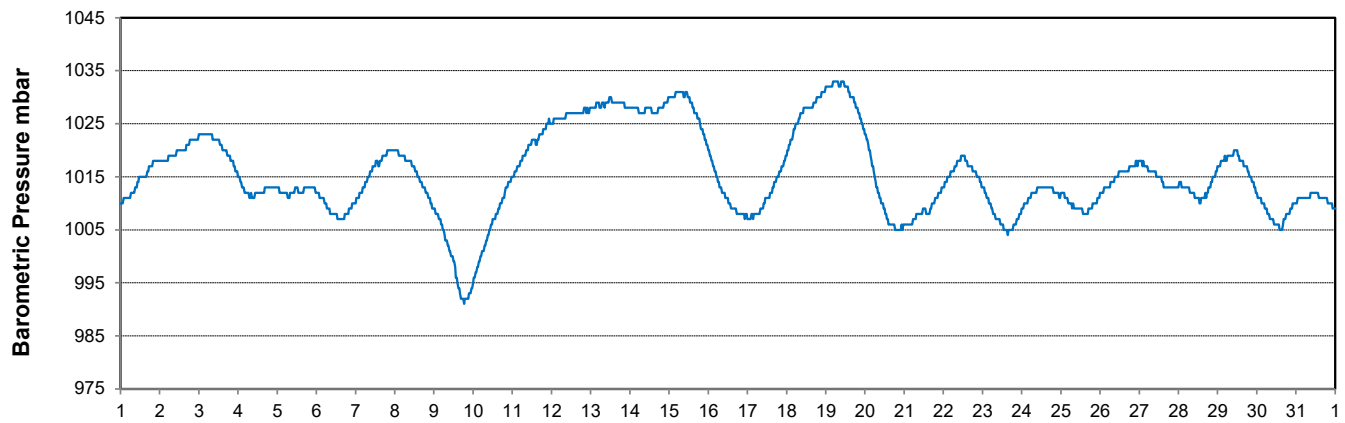
Temperature and Precipitation for January 2024



Relative Humidity for January 2024



Barometric Pressure Corrected to Sea Level for January 2024





SRC CLIMATE REFERENCE STATION DAILY DATA REPORT

SASKATOON STATION 4057180

52°09' N 106°36' W 497 m asl Estab. 1963

Preliminary JANUARY 2024

Day	Wind Gust			Wind Speed (10 meters) Daily Average	Soil Temperatures at 0900hrs								Radiation				
	Max	Direction	Time		Surface	5 cm	10 cm	20 cm	50 cm	100 cm	150 cm	300 cm	Bright Sunshine	Possible	% Possible	Global	Diffuse
	km/h			km/h	°C	°C	°C	°C	°C	°C	°C	°C	hours	hours		MJ/m ²	MJ/m ²
1	36.6	NW	16:46	12.2	-4.0	-6.5	-6.0	-5.5	-2.0	2.5	4.5	7.0	6.0	7.8	76.7	3.3	0.8
2	19.4	N	12:13	8.2	-5.5	-5.5	-5.5	-5.0	-2.0	2.5	4.5	7.0	0.0	7.8	0.0	1.0	1.0
3	25.8	SE	21:44	11.2	-9.0	-6.0	-5.5	-4.5	-1.5	2.5	4.0	7.0	4.3	7.9	54.7	2.8	1.4
4	29.1	S	3:28	10.6	-6.5	-6.5	-6.0	-5.0	-1.5	2.5	4.0	6.5	0.0	7.9	0.0	0.9	0.9
5	25.7	ESE	7:57	9.0	-7.5	-5.5	-5.0	-4.5	-1.5	2.5	4.0	6.5	0.5	7.9	6.3	1.5	1.4
6	27.9	ENE	20:26	12.1	-8.5	-5.0	-4.5	-4.0	-1.5	2.0	4.0	6.5	0.0	7.9	0.0	1.2	1.2
7	30.5	NE	4:48	15.4	-16.0	-5.5	-4.5	-4.0	-1.5	2.0	4.0	6.5	0.0	8.0	0.0	1.8	1.7
8	24.8	S	19:10	10.4	-21.5	-6.0	-5.0	-4.5	-1.5	2.0	4.0	6.5	2.9	8.0	36.3	2.6	1.8
9	57.0	NE	21:41	17.2	-22.5	-7.0	-6.0	-5.5	-1.5	2.0	4.0	6.5	0.0	8.0	0.0	1.2	1.2
10	49.2	NNE	0:57	23.5	-21.5	-6.5	-6.0	-5.5	-2.0	2.0	3.5	6.5	0.0	8.1	0.0	2.4	2.4
11	30.1	N	0:55	14.7	-29.0	-7.5	-6.5	-6.5	-2.0	2.0	3.5	6.5	0.9	8.1	11.1	3.0	2.8
12	23.4	NW	18:27	13.4	-36.0	-8.0	-7.5	-7.5	-2.0	2.0	3.5	6.5	4.2	8.1	51.6	3.7	2.6
13	24.1	N	2:06	12.8	-34.5	-9.0	-8.5	-8.5	-2.5	2.0	3.5	6.0	6.5	8.2	79.6	3.6	2.3
14	29.8	WNW	23:46	14.2	-35.5	-10.0	-9.0	-7.5	-2.5	1.5	3.5	6.0	7.2	8.2	87.7	4.8	1.4
15	34.2	WNW	3:16	17.6	-31.5	-10.5	-10.0	-8.5	-3.0	1.5	3.5	6.0	7.9	8.3	95.8	5.7	1.5
16	36.2	WNW	16:00	14.9	-31.0	-11.0	-10.0	-8.5	-3.5	1.5	3.5	6.0	7.1	8.3	85.6	6.0	2.2
17	35.7	WNW	0:45	14.7	-20.5	-10.0	-9.5	-8.5	-4.0	1.5	3.5	6.0	4.3	8.3	51.6	3.5	2.3
18	47.5	WNW	14:11	21.0	-24.5	-10.5	-9.5	-8.5	-4.0	1.0	3.0	6.0	3.8	8.4	45.3	4.2	2.9
19	23.4	S	22:56	10.8	-18.5	-9.5	-9.0	-8.5	-4.0	1.0	3.0	6.0	0.0	8.4	0.0	3.1	3.2
20	40.9	SE	5:38	12.7	-14.5	-9.0	-8.5	-8.0	-4.0	1.0	3.0	6.0	5.6	8.5	66.1	4.1	1.7
21	23.1	NNE	19:58	8.9	-13.5	-8.0	-7.5	-7.0	-4.0	1.0	3.0	6.0	0.6	8.5	7.0	2.6	2.5
22	43.5	SE	20:56	18.9	-14.0	-7.5	-7.0	-6.5	-4.0	1.0	3.0	5.5	0.3	8.6	3.5	3.1	3.1
23	31.5	SE	1:47	12.4	-8.0	-7.0	-6.5	-6.0	-3.5	0.5	2.5	5.5	4.1	8.6	47.6	4.9	3.4
24	22.4	SE	21:56	8.0	-9.0	-6.0	-5.5	-5.5	-3.5	0.5	2.5	5.5	0.0	8.7	0.0	2.2	2.2
25	20.6	W	23:13	9.5	-10.5	-5.5	-5.5	-5.0	-3.0	0.5	2.5	5.5	6.0	8.7	68.8	5.4	2.4
26	20.7	SW	12:47	10.1	-12.5	-5.5	-5.0	-5.0	-3.0	0.5	2.5	5.5	8.0	8.8	91.2	7.4	1.6
27	22.6	S	14:11	9.1	-11.0	-5.0	-5.0	-4.5	-2.5	0.5	2.5	5.5	1.8	8.8	20.4	3.9	3.4
28	22.4	WSW	13:40	10.6	-6.5	-5.0	-4.5	-4.5	-2.5	0.5	2.5	5.5	5.3	8.9	59.7	5.7	3.1
29	25.8	SSE	23:06	8.9	-9.5	-4.5	-4.0	-4.0	-2.5	0.5	2.5	5.5	6.7	8.9	75.0	6.5	2.5
30	42.8	WNW	15:34	16.4	1.0	-4.0	-4.0	-3.5	-2.0	0.5	2.5	5.0	7.6	9.0	84.5	5.4	2.3
31	26.7	SE	23:55	9.6	-5.5	-2.0	-2.0	-2.5	-2.0	1.0	2.5	5.0	8.2	9.1	90.6	5.2	1.4
Total													109.8	258.6	42.5	112.7	64.6
Mean				12.9	-16.0	-6.9	-6.4	-5.9	-2.6	1.4	3.3	6.0	1991-2020 Normal				
Extreme	57.0	NE	21:41		1971- 2000 Normal for Soil Temperatures								105.3	259.1	40.6	121.8	65.6
Date	9				-8.4	-8.0	-7.1	-3.5	-0.1	1.7	4.6	No. of Bright Sunshine days = 23					

Note: Red numbers indicate manual calculation; Red cell indicate data not available

SRC proudly recognizes the following CRS supporters:

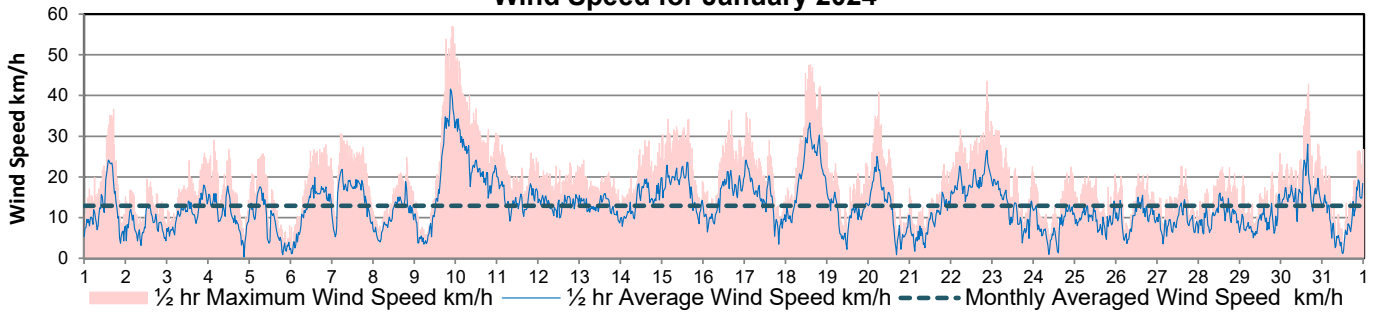


Agriculture and Agri-Food Canada

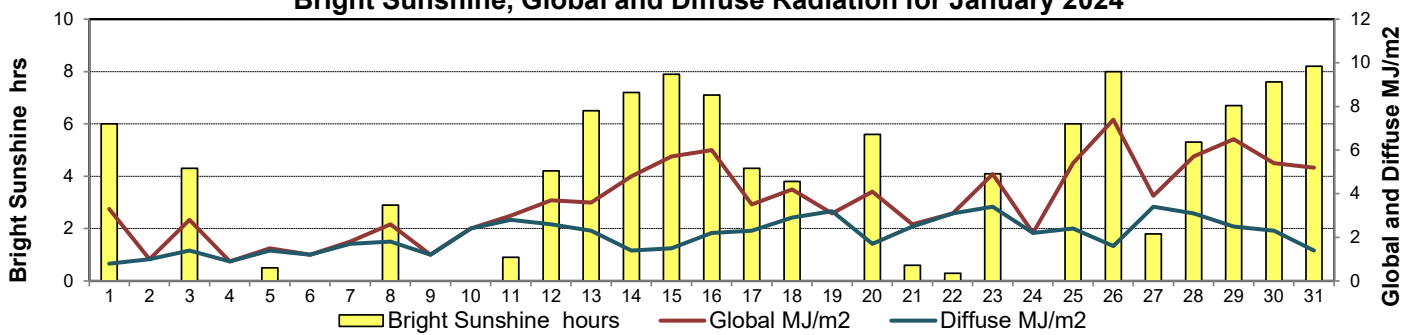
Agriculture et Agroalimentaire Canada



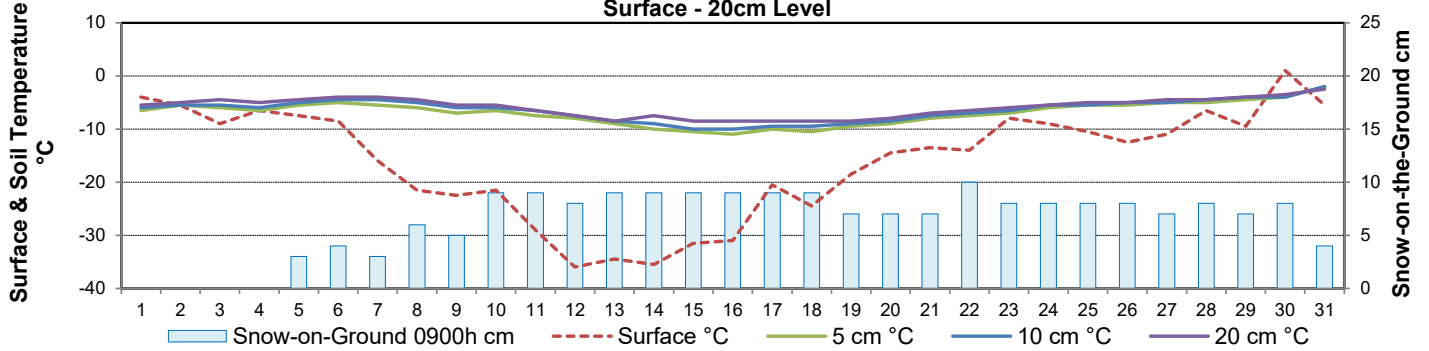
Wind Speed for January 2024



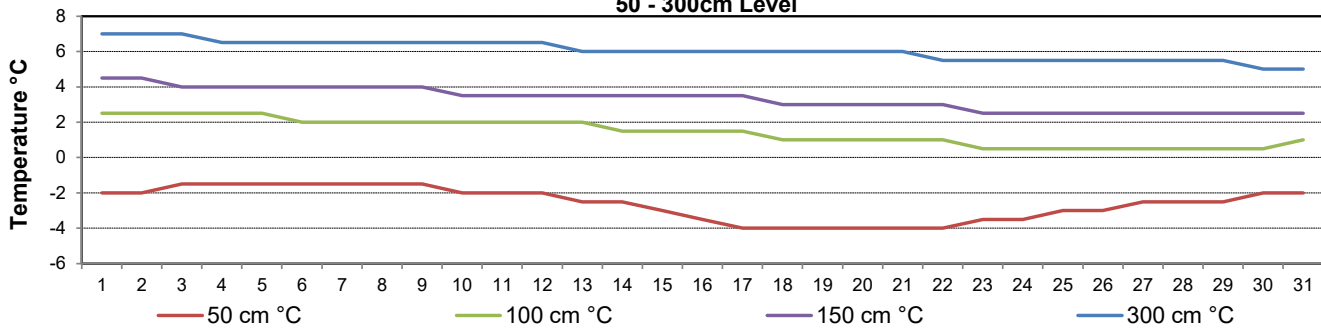
Bright Sunshine, Global and Diffuse Radiation for January 2024



**Soil Temperatures for January 2024
Surface - 20cm Level**



**Soil Temperatures for January 2024
50 - 300cm Level**





SRC CLIMATE REFERENCE STATION DAILY DATA REPORT

SASKATOON STATION 4057180

52°09' N 106°36' W 497 m asl Estab. 1963

Preliminary JANUARY 2024

Extreme Records for January

Max/Min Temperature °C					Precipitation - Monthly mm					Wind Monthly km/h				CRS Bright Sunshine - Monthly			
S'toon Area	Date	Site	S'toon CRS	Date	S'toon Area	Date	Site	S'toon CRS	Date	S'toon Airport	Date	S'toon CRS**	Date	Hours	Year	No. of Days	Year
11.0	23/1980	SWT	8.1	15/2014	66.1	1911	SE	48.6	1969	111	11 ^W 1986	109	1986	146.9	1979	30	1993
-48.9	31/1893	SM	-43.9	*29/1969	0.0	2001, '89*'12	SWT SC SE	2.6	2001					45.5	2004	15	1995

**1975 forward * more than one year

Notable Events for CRS Saskatoon - January						Saskatoon Area Stations			Glossary		
Element	Type	Day	New Record	Old Record	Year	Station	Location	Period	Symbol	Description	
Temperature	Highest Maximum Daily	1	2.2	2.2	1964	SM	NWMP	c. 1892-1901	T	Trace of precipitation	
		30	9.2	7	1993	SE	Eby	1901-1941	Normal	30 year average beginning with the decade	
		31	9.1	5	1984	US	Univ. of Sask.	1915-1964	SOG	Depth of snow-on-the-ground in cm	
	Lowest Maximum Daily	12	-29.9	-29.4	1965	S	Saskatoon	1941-1942	na	not available	
		Highest Minimum Daily	30	0.2	-0.5	1993	SA	Saskatoon A	1942 -	Degree-days	
		Highest Mean Daily	30	4.7	3.3	1993	NRC	Nat. Res. Council	1952-1966	Tm	Mean Temperature
Heating Degree-days	Lowest Daily	30	13.3	14.7	1993	SRC	Sask. Res. Council	1963-	Growing	(Tm-5°C); if Tm ≤ 5°C then GDD = 0	
		31	3.1	2.3	1993	SWT	S'toon Water Treatment Plant	1974 -	Heating	(18°C-Tm); if Tm ≤ 18°C then HDD = 0	
		31	14.9	15.7	1993	SC	S'toon Central Ave	1974-1989	Cooling	(Tm-18°C); if Tm ≥ 18°C then CDD = 0	
Precipitation	Highest Daily Maximum	9	2.6	2.0	1975	S1	Saskatoon 1	1976-1978	Extreme Cooling	(Tm-24°C); if Tm ≥ 24°C then CDD = 0	
						S2	Saskatoon 2	1977-1990	January 30 non-continuous snow cover No precipitation events were recorded between December 20 2023 and January 16 resulting in 16 days of no measureable precipitation		
						K	S'toon Kernen Farm	1993-2004			
						KCS	S'toon Kernen Farm CS	1996-			
						RCS	Environment Canada	2008-			
						SF	Sutherland Forestry	1943-1970			

Element	Type	Day	New Record	Old Record	Year	Day
Temperature	Extreme Maximum Monthly Temperature	30	9.2	8.1	2014	15
	Highest Mean Monthly Temperature	30	4.7	4	2002	8

Nine continuous days of measurable precipitation was recorded between January 5 and 13 resulting a cumulative amount of 10.7mm

SRC proudly recognizes the following CRS supporters:



Agriculture and Agri-Food Canada / Agriculture et Agroalimentaire Canada





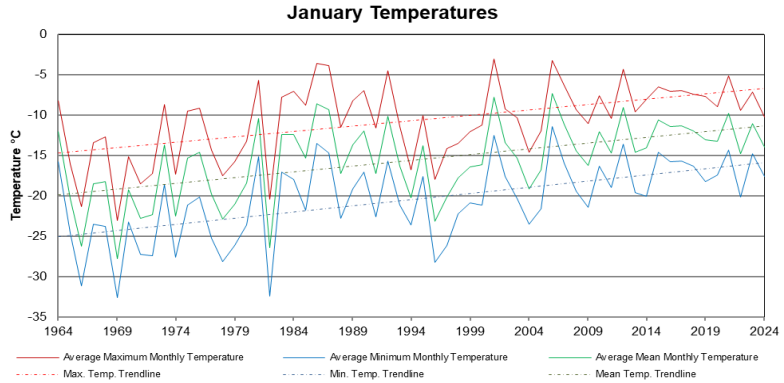
SRC CLIMATE REFERENCE STATION DAILY DATA REPORT

SASKATOON STATION 4057180

52°09' N 106°36' W 497 m asl Estab. 1963

Preliminary January 2024

Day	2 meter Wind Speed			Soil Moisture at 0900 hrs (rounded to the 0.5%)		
	Daily Average	Max ½ hr Avg	½ hr Extreme Max	10 cm	20 cm	50 cm
	km/h	km/h	km/h	% by volume (soil type is Loam (45.5% Sand, 41.1% Silt, 13.3% Clay))		
1	9.0	17.2	26.4	4.0	6.0	8.0
2	6.0	9.3	15.4	3.5	5.5	7.5
3	8.0	12.7	21.8	3.5	6.5	7.5
4	8.0	12.7	24.1	3.5	6.0	7.5
5	7.0	13.9	21.2	4.0	6.0	7.5
6	9.0	15.0	22.9	3.5	6.0	8.0
7	12.0	16.1	24.7	4.0	6.0	7.5
8	8.0	13.3	20.0	3.5	6.5	8.0
9	13.0	29.6	45.4	3.0	6.0	7.5
10	16.0	23.2	35.6	3.5	5.5	7.5
11	10.0	14.1	21.2	3.0	6.0	7.0
12	10.0	11.8	18.9	3.0	6.0	7.5
13	10.0	12.2	17.2	3.0	5.5	7.5
14	11.0	14.9	24.7	2.5	5.0	7.0
15	14.0	18.0	28.1	3.0	5.5	7.5
16	12.0	16.6	29.8	3.0	5.5	7.0
17	10.0	17.9	28.1	2.5	5.0	7.0
18	15.0	24.2	39.6	2.5	5.5	7.0
19	8.0	12.5	19.5	3.0	5.0	7.0
20	9.0	18.3	32.7	3.0	5.5	7.0
21	7.0	12.1	17.2	3.0	5.5	7.5
22	15.0	21.0	33.9	3.0	5.5	7.0
23	9.0	13.4	27.0	3.0	5.5	7.5
24	6.0	10.2	16.6	3.0	5.5	7.0
25	7.0	11.2	17.2	3.5	6.0	7.5
26	8.0	13.5	18.3	3.5	6.0	7.5
27	6.0	10.9	17.7	4.0	5.5	7.5
28	8.0	13.2	21.2	3.5	6.0	7.5
29	6.0	10.6	16.6	4.0	6.0	7.5
30	12.0	20.5	32.1	4.0	6.0	7.5
31	7.0	0.0	24.0	5.5	6.0	7.5
Total						
Mean				3	6	7.4
Extreme	16.0	29.6	45.4	5.5	6.5	8
Date	10	9	9	31	3	1

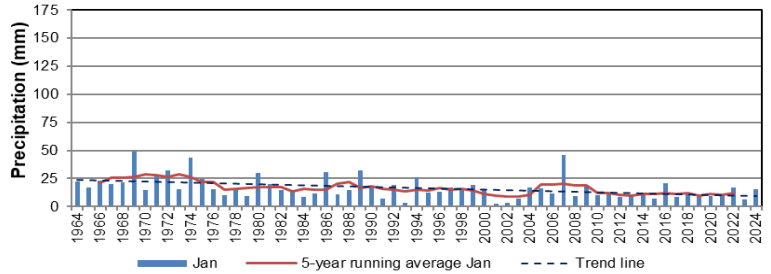


January Max temperature were 29 out of 61 years coolest

January Min temperature were 42 out of 61 years coolest

January average temperature were 36 out of 61 years coolest

January precipitation (1964-2024)



January Precipitation amounts were 30th wettest or 32 driest, so average

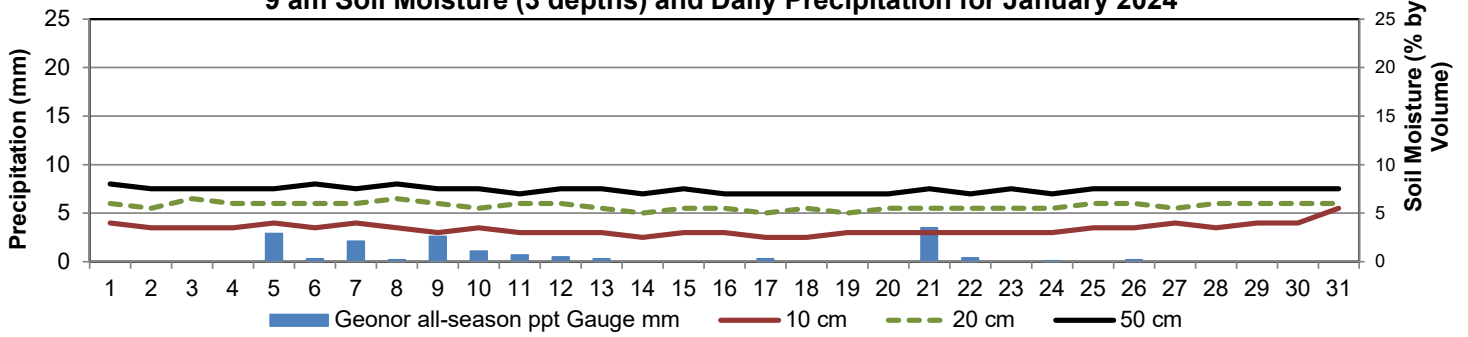
January 2024 was 1st above normal monthly precipitation since August 2023

Note: Red numbers indicate manual calculation; Red cell indicate data not available

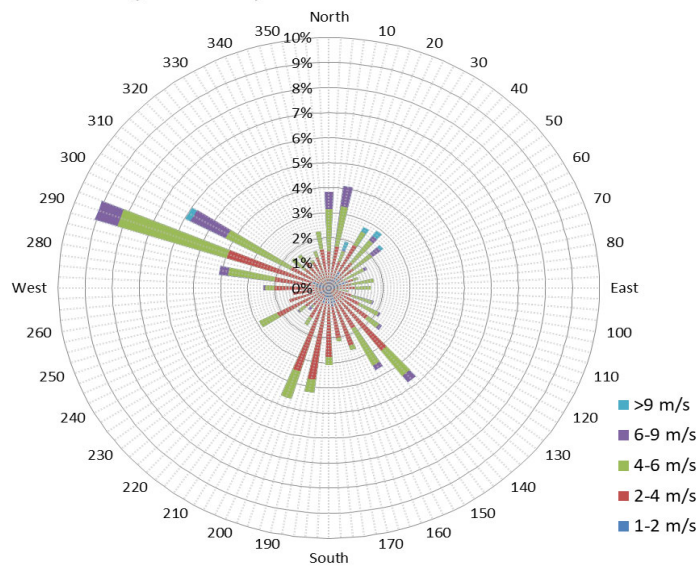
SRC proudly recognizes the following CRS supporters:



9 am Soil Moisture (3 depths) and Daily Precipitation for January 2024



10 minute Average Wind Speed and Direction Saskatoon Jan 2024



1/2 hr Maximum Wind Speed and Direction Saskatoon Jan 2024

