



SRC CLIMATE REFERENCE STATION DAILY DATA REPORT

SASKATOON STATION 4057180

52°09' N 106°36' W 497 m asl Estab. 1963

Preliminary JANUARY 2025

Day	Temperature						Degree-days			Precipitation			Relative Humidity		Station Pressure (sea level)	
	Max	Normal Max	Min	Normal Min	Mean	Normal Mean	Growing	Heating	Cooling	Geonor all-season ppt Gauge	Notes	Snow-on-Ground 0900h	Max ½ hr Avg	Min ½ hr Avg	Max ½ hr Avg	Min ½ hr Avg
	°C	1991-2020	°C	1991-2020	°C	1991-2020	5°C base	18°C base	18°C base	mm		cm	%	%	mbar	mbar
1	-13.6	-10.3	-22.4	-21.3	-18.0	-15.8	0.0	36.0	0.0	0.1	very light snow	14	78	70	1024	1021
2	-16.5	-9.3	-25.1	-19.2	-20.8	-14.3	0.0	38.8	0.0	0.1	very light snow	14	82	68	1033	1024
3	-22.7	-9.9	-29.2	-19.5	-26.0	-14.7	0.0	44.0	0.0	0.0		14	78	71	1036	1033
4	-23.6	-10.7	-31.0	-19.5	-27.3	-15.1	0.0	45.3	0.0	0.1	very light snow	14	74	69	1033	1029
5	-15.1	-10.7	-24.2	-19.6	-19.7	-15.2	0.0	37.7	0.0	0.0	very light snow	14	77	69	1029	1025
6	-15.2	-9.3	-18.0	-18.3	-16.6	-13.8	0.0	34.6	0.0	0.0		14	82	73	1034	1028
7	-5.2	-9.7	-19.0	-18.9	-12.1	-14.3	0.0	30.1	0.0	0.0	very light snow	14	88	75	1034	1015
8	1.9	-10.7	-5.3	-19.3	-1.7	-15.0	0.0	19.7	0.0	0.0		14	79	65	1018	1006
9	-2.1	-11.5	-12.7	-20.0	-7.4	-15.8	0.0	25.4	0.0	0.0		14	88	68	1023	1018
10	-1.9	-12.2	-13.6	-20.6	-7.8	-16.4	0.0	25.8	0.0	1.6	light snow	14	93	71	1020	996
11	-1.2	-11.8	-20.8	-20.3	-11.0	-16.1	0.0	29.0	0.0	1.4	light snow	17	95	74	1022	997
12	-18.8	-12.0	-25.9	-21.7	-22.4	-16.9	0.0	40.4	0.0	0.0		14	81	74	1023	1019
13	-11.2	-11.4	-21.7	-21.2	-16.5	-16.3	0.0	34.5	0.0	0.5	light snow	15	84	73	1019	1017
14	0.1	-11.2	-13.9	-20.2	-6.9	-15.7	0.0	24.9	0.0	0.0		15	89	73	1018	1010
15	2.9	-8.6	-5.3	-19.5	-1.2	-14.1	0.0	19.2	0.0	0.0		15	83	64	1018	1010
16	4.8	-9.7	-6.4	-19.5	-0.8	-14.6	0.0	18.8	0.0	0.7	light snow	14	91	65	1017	989
17	-6.0	-10.0	-19.8	-19.2	-12.9	-14.6	0.0	30.9	0.0	0.5	light snow	14	91	65	1029	989
18	-19.7	-8.2	-28.1	-18.5	-23.9	-13.3	0.0	41.9	0.0	0.0		14	72	61	1037	1030
19	-24.9	-8.5	-30.9	-18.6	-27.9	-13.6	0.0	45.9	0.0	0.0		14	74	63	1036	1031
20	-17.4	-9.1	-31.7	-18.6	-24.6	-13.9	0.0	42.6	0.0	0.0		14	72	58	1038	1011
21	-1.2	-8.9	-17.4	-17.7	-9.3	-13.3	0.0	27.3	0.0	0.0		14	82	63	1010	1002
22	-1.7	-8.4	-11.2	-17.1	-6.5	-12.8	0.0	24.5	0.0	0.1	very light snow	14	84	70	1028	1010
23	-1.6	-8.0	-10.6	-17.5	-6.1	-12.8	0.0	24.1	0.0	0.6	light snow	14	89	71	1028	1007
24	-1.5	-8.7	-11.9	-17.1	-6.7	-12.9	0.0	24.7	0.0	0.1	snow squalls	14	86	59	1019	1006
25	-5.3	-8.2	-14.2	-16.8	-9.8	-12.5	0.0	27.8	0.0	0.0		14	79	61	1022	1014
26	-1.5	-8.5	-12.4	-18.5	-7.0	-13.5	0.0	25.0	0.0	0.0		14	84	66	1016	1006
27	1.3	-7.9	-3.3	-17.6	-1.0	-12.8	0.0	19.0	0.0	0.0		14	76	58	1011	1002
28	3.9	-9.3	-3.1	-18.9	0.4	-14.1	0.0	17.6	0.0	0.0		14	74	51	1009	1002
29	0.6	-8.8	-5.1	-20.1	-2.3	-14.5	0.0	20.3	0.0	0.0		14	82	52	1009	1002
30	0.7	-7.3	-15.4	-16.2	-7.4	-11.8	0.0	25.4	0.0	0.1		14	87	73	1020	1003
31	-12.9	-6.9	-20.5	-17.6	-16.7	-12.2	0.0	34.7	0.0	1.7	snow / blowing snow	14	83	67	1022	1006
Total							0.0	935.9	0.0	7.6			Extreme / Date	Extreme / Date	Extreme / Date	Extreme / Date
Avg	-7.2	-9.5	-17.1	-19.0	-12.2	-14.3	1991-2020 Normal			13.2	1991-2020 Normal					
Extreme Date	4.8		-31.7				0.0	1000.6	0.0	7.6	Cumulative		95	51	1038	989
	16		20							13.2	Cumulative Normal		11	28	20	16

Note: Red numbers indicate manual calculation; Red cell indicate data not available

It has not been corrected for wind speed.

SRC proudly recognizes the following CRS supporters:

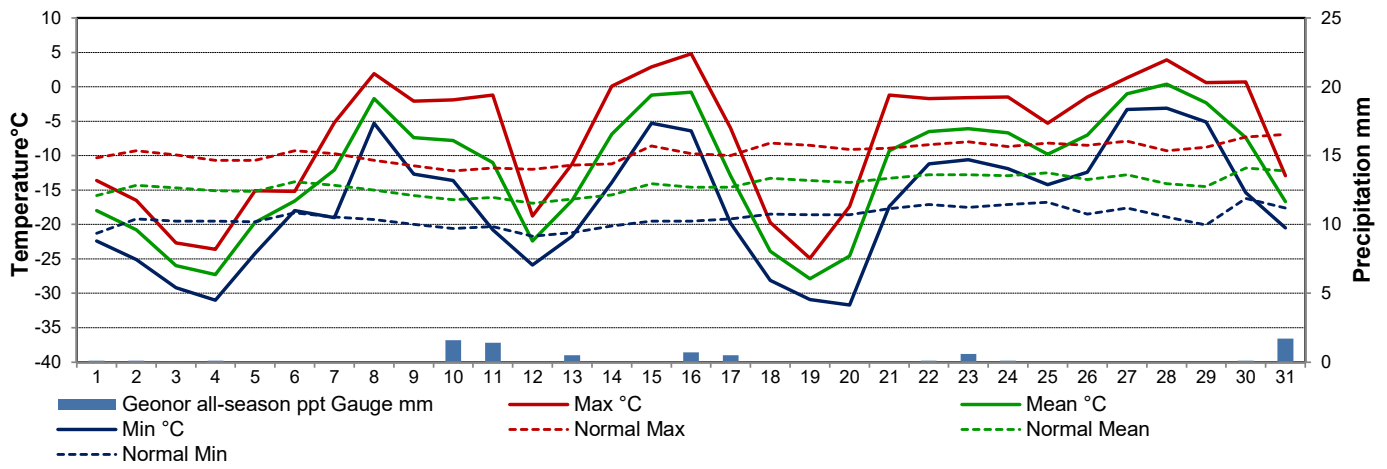


Agriculture and Agri-Food Canada

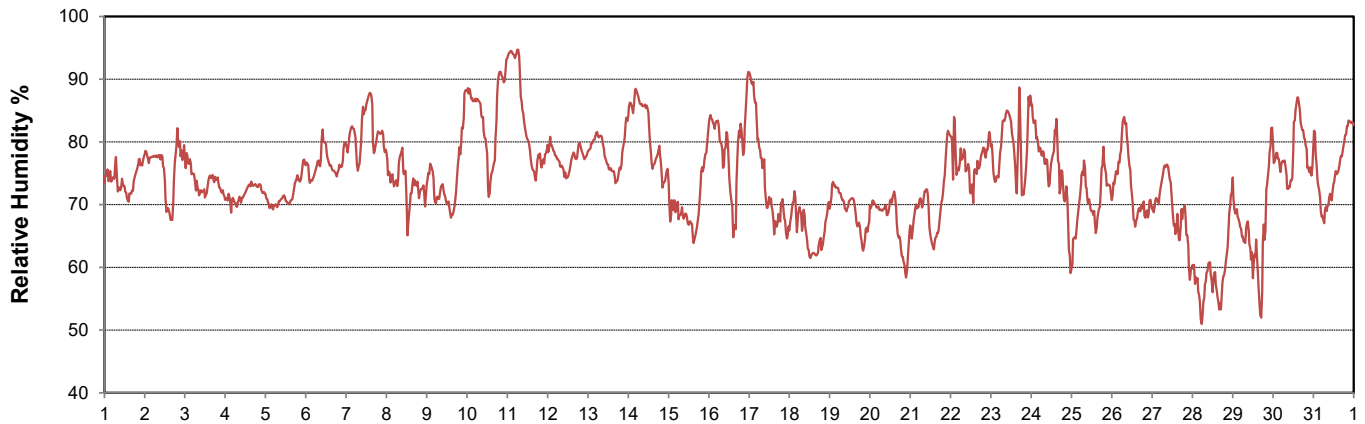
Agriculture et Agroalimentaire Canada



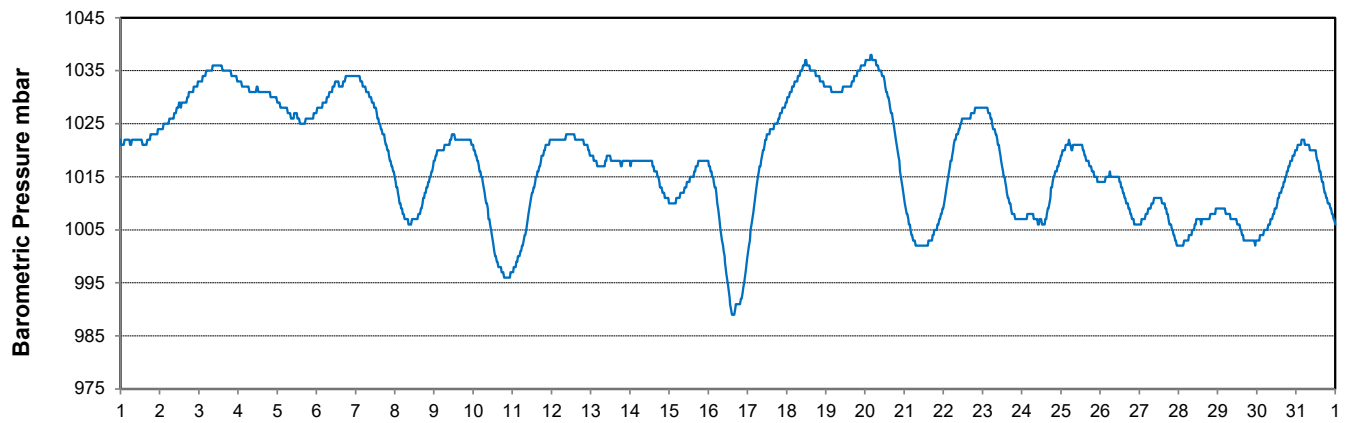
Temperature and Precipitation for January 2025



Relative Humidity for January 2025



Barometric Pressure Corrected to Sea Level for January 2025





SRC CLIMATE REFERENCE STATION DAILY DATA REPORT

SASKATOON STATION 4057180

52°09' N 106°36' W 497 m asl Estab. 1963

Preliminary **JANUARY 2025**

Day	Wind Gust			Wind Speed (10 meters) Daily Average	Soil Temperatures at 0900hrs								Radiation				
	Max	Direction	Time		Surface	5 cm	10 cm	20 cm	50 cm	100 cm	150 cm	300 cm	Bright Sunshine	Possible	% Possible	Global	Diffuse
	km/h			km/h	°C	°C	°C	°C	°C	°C	°C	°C	hours	hours		MJ/m ²	MJ/m ²
1	29.1	NNW	3:49	10.8	-13.5	-0.5	0.0	0.0	2.0	4.5	5.5	7.5	6.0	7.8	76.5	3.3	1.1
2	17.9	N	14:27	7.0	-14.5	-0.5	0.0	0.0	2.0	4.5	5.5	7.5	5.5	7.9	70.0	4.0	1.5
3	15.0	NNE	6:38	6.2	-20.0	-1.0	-0.5	0.0	2.0	4.5	5.5	7.5	3.0	7.9	38.1	4.2	2.3
4	36.1	SE	20:29	12.3	-18.0	-1.5	-1.0	0.0	2.0	4.5	5.5	7.5	5.7	7.9	72.1	5.1	2.0
5	27.6	SE	1:42	12.4	-13.0	-1.5	-1.0	-0.5	2.0	4.5	5.5	7.0	0.0	7.9	0.0	1.9	1.9
6	29.2	N	6:19	12.6	-13.0	-2.0	-1.5	-0.5	1.5	4.5	5.5	7.0	0.0	8.0	0.0	2.2	2.2
7	27.4	SSW	13:22	16.5	-14.5	-2.0	-1.5	-1.0	1.5	4.0	5.5	7.0	3.6	8.0	45.1	3.3	2.3
8	45.5	WNW	13:51	18.8	-5.5	-1.5	-1.5	-1.0	1.5	4.0	5.5	7.0	3.9	8.0	48.6	3.4	1.6
9	40.5	W	7:04	19.6	-7.0	-1.5	-1.0	-1.5	1.5	4.0	5.5	7.0	7.7	8.1	95.5	4.4	1.0
10	31.2	S	13:36	11.1	-9.0	-1.5	-1.0	-1.5	1.5	4.0	5.5	7.0	0.0	8.1	0.0	1.8	1.8
11	53.8	N	8:33	22.1	-7.0	-1.5	-1.0	-1.5	1.5	4.0	5.5	7.0	3.4	8.1	41.8	3.2	1.8
12	21.4	W	15:15	9.4	-23.5	-1.0	-1.0	-0.5	1.5	4.0	5.0	7.0	7.8	8.2	95.6	6.7	1.4
13	31.0	SE	12:45	12.0	-13.5	-1.5	-1.0	-0.5	1.5	4.0	5.0	7.0	0.0	8.2	0.0	2.3	2.3
14	40.2	SW	22:06	13.1	-14.0	-2.0	-1.5	-1.0	1.5	4.0	5.0	7.0	5.1	8.2	61.9	5.1	2.3
15	43.1	WNW	14:44	20.0	-1.0	-1.5	-1.5	-1.0	1.0	4.0	5.0	7.0	7.9	8.3	95.4	4.6	1.1
16	61.1	WNW	15:57	22.3	-2.5	-1.5	-1.0	-2.0	1.0	4.0	5.0	7.0	4.4	8.3	52.8	4.1	1.4
17	60.7	N	0:55	28.1	-13.0	-1.0	-1.0	-0.5	1.0	3.5	5.0	7.0	0.3	8.4	3.6	3.4	3.3
18	36.7	NNW	4:06	17.6	-28.0	-1.0	-1.0	-0.5	1.0	3.5	5.0	6.5	8.1	8.4	96.2	5.4	1.2
19	44.3	NW	16:08	16.1	-31.0	-2.0	-1.5	-1.0	1.0	3.5	5.0	6.5	8.1	8.5	95.7	6.5	1.6
20	31.8	S	21:17	13.5	-31.0	-2.5	-2.0	-1.0	1.0	3.5	5.0	6.5	7.4	8.5	87.0	6.5	2.0
21	52.1	WNW	14:03	22.4	-7.0	-3.0	-2.5	-1.5	1.0	3.5	5.0	6.5	6.1	8.6	71.3	4.5	1.7
22	51.9	N	4:58	21.0	-11.0	-2.5	-2.0	-2.0	0.5	3.5	5.0	6.5	0.0	8.6	0.0	2.8	2.8
23	31.8	SW	17:04	15.7	-10.0	-2.5	-2.0	-3.0	0.5	3.5	5.0	6.5	0.0	8.7	0.0	2.5	2.5
24	61.2	NNW	18:11	27.1	-7.0	-2.0	-1.5	-2.0	0.5	3.5	4.5	6.5	0.5	8.7	5.7	3.5	3.3
25	30.1	SW	16:39	16.7	-10.5	-2.0	-1.5	-2.0	0.5	3.5	4.5	6.5	3.7	8.8	42.2	4.5	2.8
26	41.0	SW	15:20	18.2	-13.0	-2.0	-1.5	-1.5	0.5	3.5	4.5	6.5	6.4	8.8	72.6	5.5	2.6
27	37.9	NW	3:46	17.2	-4.5	-2.0	-1.5	-1.5	0.5	3.0	4.5	6.5	5.6	8.9	63.1	5.1	2.4
28	47.3	WNW	5:40	23.4	-0.5	-1.5	-1.5	-1.0	0.5	3.0	4.5	6.5	5.3	8.9	59.4	5.1	3.5
29	22.9	WNW	1:00	9.4	-3.0	-1.5	-1.0	-1.0	0.5	3.0	4.5	6.5	0.1	9.0	1.1	2.9	2.8
30	38.5	NNE	14:53	19.1	-1.0	-1.0	-1.0	-1.0	1.0	3.0	4.5	6.5	0.0	9.0	0.0	2.2	2.2
31	56.1	SE	21:44	23.6	-18.5	-1.0	-1.0	-1.0	1.0	3.0	4.5	6.0	0.0	9.1	0.0	3.6	3.5
Total													115.6	259.6	44.5	123.6	66.2
Mean				16.6	-12.2	-1.6	-1.2	-1.1	1.2	3.8	5.0	6.8	1991-2020 Normal				
Extreme	61.2	NNW	18:11		1971- 2000 Normal for Soil Temperatures								105.3	259.1	40.6	121.8	65.6
Date	24				-8.4	-8.0	-7.1	-3.5	-0.1	1.7	4.6	No. of Bright Sunshine days = 23					

Note: Red numbers indicate manual calculation; Red cell indicate data not available

SRC proudly recognizes the following CRS supporters:

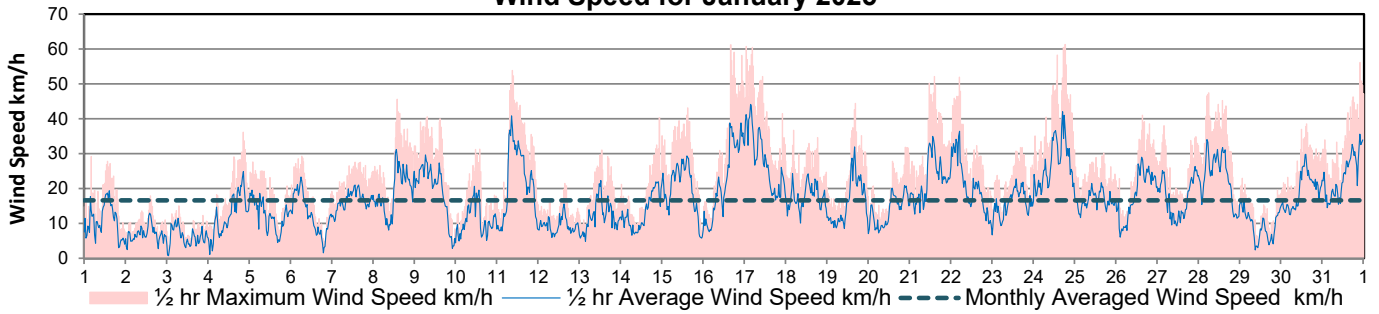


Agriculture and Agri-Food Canada

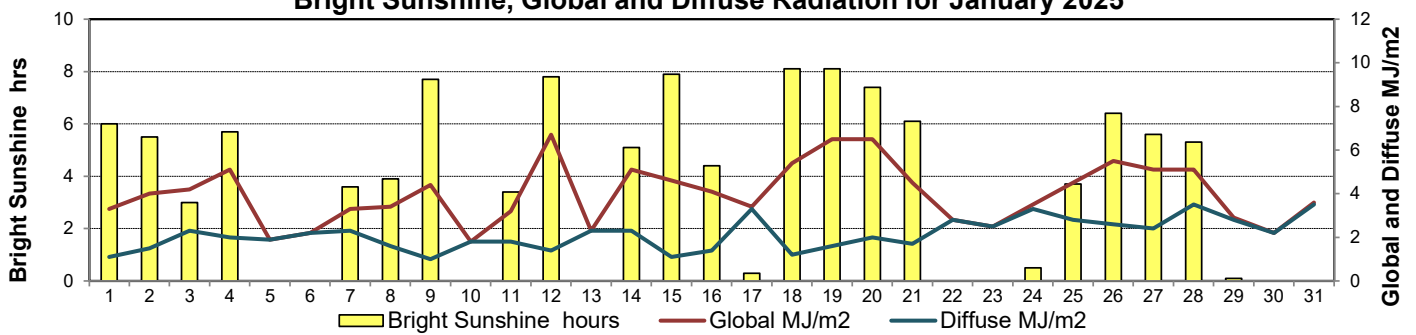
Agriculture et Agroalimentaire Canada



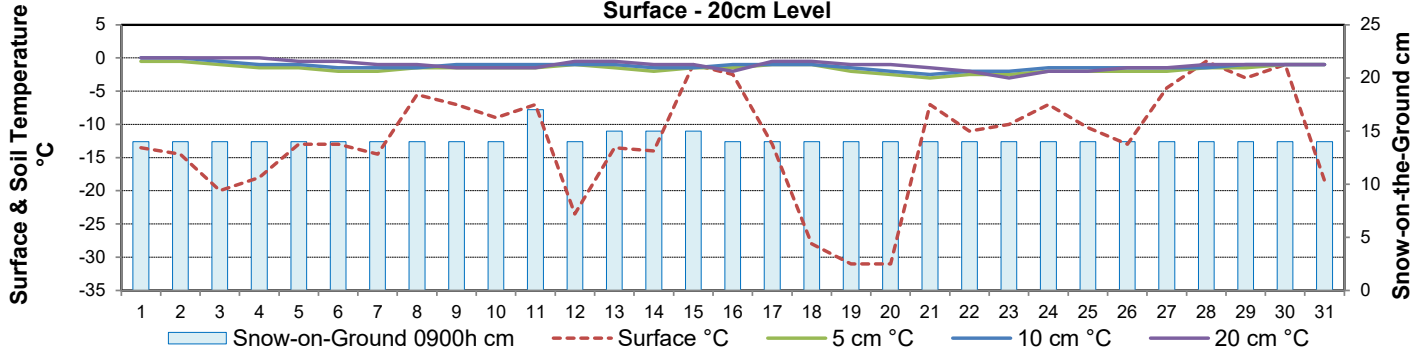
Wind Speed for January 2025



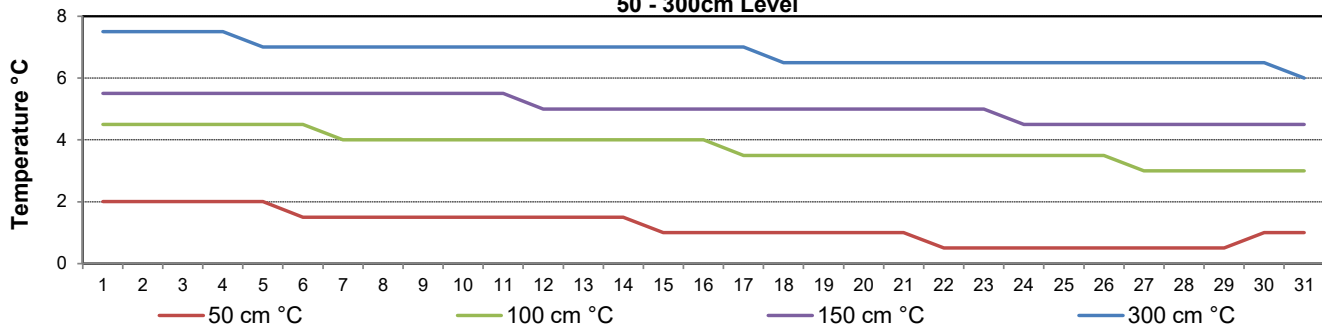
Bright Sunshine, Global and Diffuse Radiation for January 2025



**Soil Temperatures for January 2025
Surface - 20cm Level**



**Soil Temperatures for January 2025
50 - 300cm Level**





SRC CLIMATE REFERENCE STATION DAILY DATA REPORT

SASKATOON STATION 4057180

52°09' N 106°36' W 497 m asl Estab. 1963

Preliminary **JANUARY 2025**

Extreme Records for January

Max/Min Temperature °C				Precipitation - Monthly mm				Wind Monthly km/h				CRS Bright Sunshine - Monthly					
S'toon Area	Date	Site	S'toon CRS	Date	S'toon Area	Date	Site	S'toon CRS	Date	S'toon Airport	Date	S'toon CRS**	Date	Hours	Year	No. of Days	Year
11.0	23/1980	SWT	8.1	15/2014	66.1	1911	SE	48.6	1969	111	11 ^W 1986	109	1986	146.9	1979	30	1993
-48.9	31/1893	SM	-43.9	*29/1969	0.0	2001, '89-'12	SWT SC SE	2.6	2001					45.5	2004	15	1995

**1975 forward * more than one year

Notable Events for CRS Saskatoon - January						Saskatoon Area Stations			Glossary	
Element	Type	Day	New Record	Old Record	Year	SM	NWMP	c. 1892-1901	T	Trace of precipitation
Temperature	Highest Maximum Daily	16	4.8	4.1	2010	SE	Eby	1901-1941	Normal	30 year average beginning with the decade
	Highest Mean Daily	28	0.4	0.3	2017	US	Univ. of Sask.	1915-1964	SOG	Depth of snow-on-the-ground in cm
						S	Saskatoon	1941-1942	na	not available
						SA	Saskatoon A	1942 -	Degree-days	
						NRC	Nat. Res. Council	1952-1966	Tm	Mean Temperature
						SRC	Sask. Res. Council	1963-	Growing	(Tm-5°C); if Tm ≤ 5°C then GDD = 0
						SWT	S'toon Water Treatment Plant	1974 -	Heating	(18°C-Tm); if Tm ≤ 18°C then HDD = 0
						SC	S'toon Central Ave	1974-1989	Cooling	(Tm-18°C); if Tm ≥ 18°C then CDD = 0
						S1	Saskatoon 1	1976-1978	Extreme Cooling	(Tm-24°C); if Tm ≥ 24°C then CDD = 0
						S2	Saskatoon 2	1977-1990		
						K	S'toon Kernen Farm	1993-2004		
						KCS	S'toon Kernen Farm CS	1996-		
						RCS	Environment Canada	2008-		
						SF	Sutherland Forestry	1943-1970		

Precipitation (1964 to 2025) 9th driest

Temperature (1964 to 2025)
 Average Maximum Monthly Temperature 17th warmest
 Average Minimum Monthly Temperature 20th warmest
 Average Mean Monthly Temperature 19th warmest

SRC proudly recognizes the following CRS supporters:





SRC CLIMATE REFERENCE STATION DAILY DATA REPORT

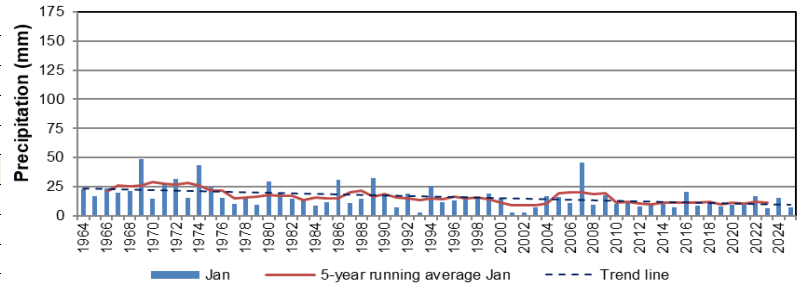
SASKATOON STATION 4057180

52°09' N 106°36' W 497 m asl Estab. 1963

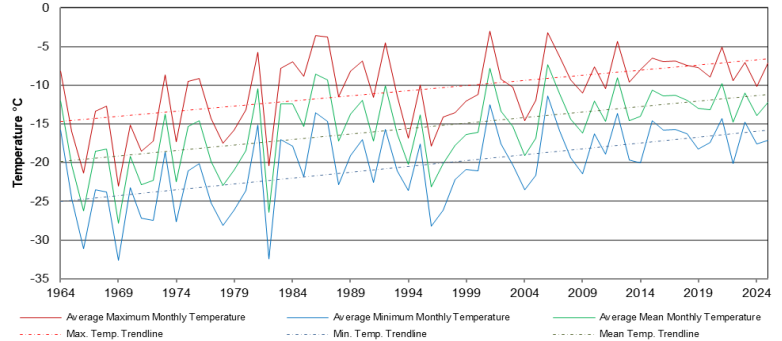
Preliminary January 2025

Day	2 meter Wind Speed			Soil Moisture at 0900 hrs (rounded to the 0.5%)		
	Daily Average	Max ½ hr Avg	½ hr Extreme Max	10 cm	20 cm	50 cm
	km/h	km/h	km/h	% by volume (soil type is Loam (45.5% Sand, 41.1% Silt, 13.3% Clay))		
1	9.0	16.5	24.7	6.0	1.5	9.0
2	6.0	10.5	14.9	6.0	1.5	9.0
3	4.0	7.6	11.4	5.5	1.0	8.5
4	8.0	18.7	30.4	5.0	1.0	8.5
5	10.0	16.4	24.7	5.0	1.0	8.5
6	11.0	18.5	26.4	5.0	1.0	8.5
7	14.0	18.3	24.7	5.0	1.0	8.5
8	14.0	24.9	37.3	5.5	1.0	8.5
9	15.0	23.9	33.9	5.0	1.0	8.5
10	8.0	13.9	27.0	5.5	1.0	8.5
11	16.0	27.9	40.2	5.5	1.0	8.5
12	8.0	12.5	18.9	5.5	1.0	8.5
13	9.0	17.2	27.5	5.0	1.0	8.5
14	11.0	19.4	37.3	5.0	1.0	8.5
15	16.0	24.0	35.0	5.5	1.0	8.0
16	17.0	31.1	55.2	5.5	1.0	8.0
17	21.0	32.4	46.5	5.5	1.0	8.5
18	14.0	19.9	33.3	6.0	1.0	8.5
19	13.0	24.3	37.9	5.0	1.0	8.5
20	11.0	18.1	28.1	5.0	1.0	8.0
21	18.0	28.0	42.5	4.5	1.0	8.5
22	17.0	26.9	39.6	5.0	1.0	8.5
23	13.0	19.7	28.1	5.0	1.0	8.5
24	22.0	33.6	51.7	5.0	1.0	8.5
25	14.0	19.3	28.1	5.5	1.0	8.5
26	15.0	25.4	34.4	5.5	1.0	8.5
27	14.0	21.5	31.0	5.5	1.0	8.5
28	19.0	27.8	39.1	5.0	1.0	8.5
29	7.0	13.0	17.2	5.5	1.0	8.5
30	16.0	24.0	31.6	6.0	1.0	8.5
31	20.0	0.0	48.0	6.0	1.0	8.0
Total						
Mean				5	1	8.5
Extreme	22.0	33.6	55.2	6	1.5	9
Date	24	24	16	1	1	1

January Precipitation (1964-2025)



January Temperatures



Note: Red numbers indicate manual calculation; Red cell indicate data not available

SRC proudly recognizes the following CRS supporters:



Agriculture and Agri-Food Canada

Agriculture et Agroalimentaire Canada

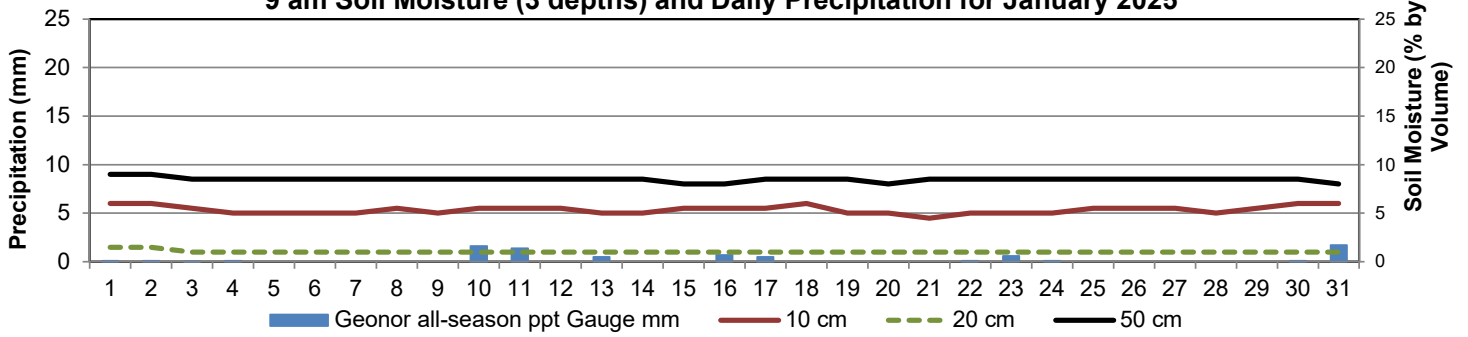


UNIVERSITY OF SASKATCHEWAN

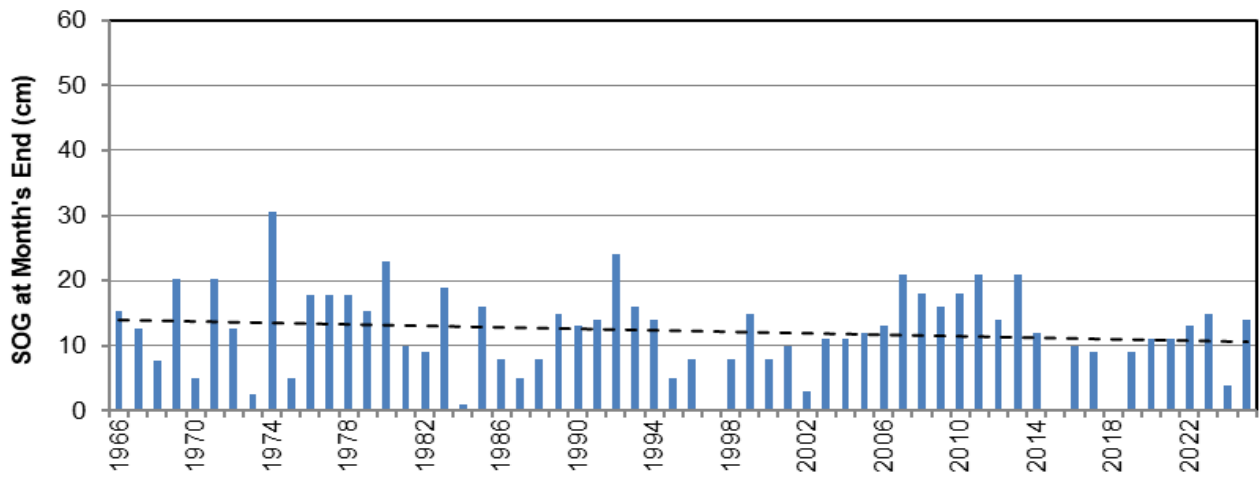


CAMPBELL SCIENTIFIC WHEN MEASUREMENTS MATTER

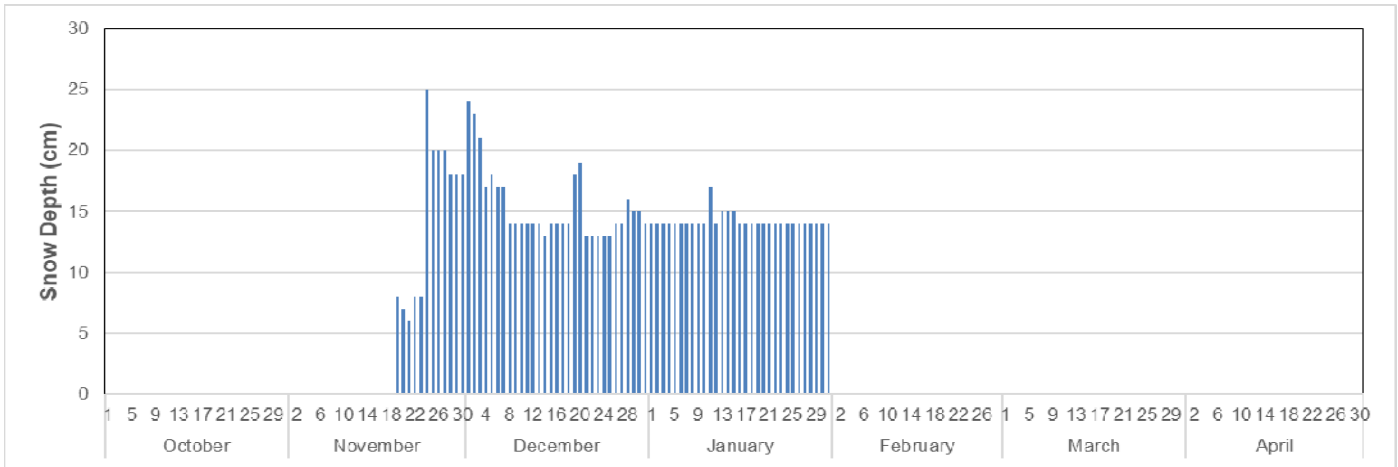
9 am Soil Moisture (3 depths) and Daily Precipitation for January 2025



January (1966 to 2025) End of Month Snow on Ground (depth (cm))



October 2024 to January 2025 09:00 Daily Snow Depth (cm)



(it looks like an ice lens has been formed at the 14cm depth)