



SRC CLIMATE REFERENCE STATION DAILY DATA REPORT

SASKATOON STATION 4057180

Saskatchewan 52°09' N 106°36' W 497 m asl Estab. 1963

Preliminary JULY 2020

Day	Temperature						Degree-days			Precipitation			Relative Humidity		Station Pressure (sea level)	
	Max	Normal Max	Min	Normal Min	Mean	Normal Mean	Growing	Heating	Cooling	Weighing Gauge	Tipping Bucket	Notes	Max ½ hr Avg	Min ½ hr Avg	Max ½ hr Avg	Min ½ hr Avg
	°C	1981-2010	°C	1981-2010	°C	1981-2010	5°C base	18°C base	18°C base	mm	mm		%	%	mbar	mbar
1	24.7	23.9	15.5	11.5	20.1	17.7	15.1	0.0	2.1	4.6	4.2	showers	92	38	1006	1002
2	23.8	24.4	12.6	11.6	18.2	18.1	13.2	0.0	0.2	2.3	1.8	showers	79	32	1010	1006
3	25.9	24.2	11.6	10.9	18.8	17.6	13.8	0.0	0.8	0.0	0.0		78	30	1015	1011
4	29.4	23.9	14.2	11.3	21.8	17.7	16.8	0.0	3.8	0.0	0.0		83	35	1014	1010
5	23.0	24.3	14.0	12.2	18.5	18.3	13.5	0.0	0.5	0.0	0.0		80	46	1014	1012
6	23.6	23.8	12.5	11.6	18.1	17.7	13.1	0.0	0.1	0.0	0.0		84	43	1015	1013
7	28.7	23.7	14.4	11.3	21.6	17.6	16.6	0.0	3.6	0.7	0.6	showers	87	43	1013	1000
8	20.9	24.5	15.5	11.4	18.2	18.0	13.2	0.0	0.2	3.1	2.8	showers	90	66	1003	994
9	22.5	24.7	13.2	11.7	17.9	18.2	12.9	0.1	0.0	0.1	0.0		91	51	1013	1003
10	24.8	24.0	11.7	11.8	18.3	17.9	13.3	0.0	0.3	5.6	4.2	tstorm	92	48	1015	1011
11	25.8	24.7	12.0	11.8	18.9	18.3	13.9	0.0	0.9	0.0	0.2	showers	93	37	1018	1013
12	26.0	25.9	15.2	12.2	20.6	19.1	15.6	0.0	2.6	0.2	0.0	showers	79	46	1012	1004
13	20.1	25.8	12.4	12.7	16.3	19.3	11.3	1.7	0.0	0.6	0.6	tstorm	85	55	1006	1004
14	20.7	25.7	12.0	12.9	16.4	19.3	11.4	1.6	0.0	1.6	1.4	showers	81	49	1007	1005
15	23.4	24.6	14.4	12.4	18.9	18.5	13.9	0.0	0.9	0.0	0.0		80	46	1009	1007
16	26.5	23.9	11.2	12.0	18.9	18.0	13.9	0.0	0.9	0.0	0.0		89	37	1011	1007
17	25.4	25.4	15.4	12.3	20.4	18.9	15.4	0.0	2.4	0.4	0.4	showers	88	37	1011	1003
18	22.6	24.4	12.5	12.5	17.6	18.5	12.6	0.4	0.0	2.3	1.8	showers	89	50	1011	1007
19	23.7	24.9	11.6	12.4	17.7	18.7	12.7	0.3	0.0	0.0	0.0		92	41	1015	1012
20	24.5	25.3	14.9	11.8	19.7	18.5	14.7	0.0	1.7	5.3	4.4	showers	92	52	1016	1014
21	25.8	25.8	11.5	12.8	18.7	19.3	13.7	0.0	0.7	0.0	0.0		93	44	1015	1010
22	31.7	26.8	16.3	12.4	24.0	19.6	19.0	0.0	6.0	0.0	0.0		82	35	1010	1005
23	31.7	25.9	17.3	12.7	24.5	19.3	19.5	0.0	6.5	0.0	0.0	trace	93	46	1005	1003
24	27.0	26.4	16.9	12.0	22.0	19.2	17.0	0.0	4.0	0.0	0.0		88	41	1006	1001
25	20.7	26.3	14.5	12.1	17.6	19.2	12.6	0.4	0.0	0.1	0.2	showers	86	43	1012	1005
26	25.4	27.2	12.7	12.4	19.1	19.8	14.1	0.0	1.1	0.0	0.0		84	34	1017	1012
27	28.9	26.4	12.3	12.7	20.6	19.6	15.6	0.0	2.6	0.0	0.0		85	33	1018	1013
28	32.1	26.1	12.3	12.4	22.2	19.3	17.2	0.0	4.2	0.0	0.0		88	24	1013	1009
29	33.3	26.8	18.2	12.1	25.8	19.5	20.8	0.0	7.8	0.0	0.0		73	32	1013	1009
30	31.9	26.2	17.5	12.8	24.7	19.5	19.7	0.0	6.7	0.0	0.0		88	44	1019	1013
31	26.9	25.7	15.0	12.2	21.0	19.0	16.0	0.0	3.0	0.0	0.0		89	30	1023	1019
Total							462.1	4.5	63.6	26.9	22.6		Extreme / Date	Extreme / Date	Extreme / Date	Extreme / Date
Avg	25.9	25.2	13.9	12.1	19.9	18.7	1981-2010 Normal			59.0	Normal					
Extreme Date	33.3		11.2				424.0	30.7	51.7	207.6	Cumulative		93	24	1023	994
	29		16							226.5	Cumulative Normal		11	28	31	8

Note: Red numbers indicate manual calculation; Red cell indicate data not available

SRC proudly recognizes the following CRS supporters:

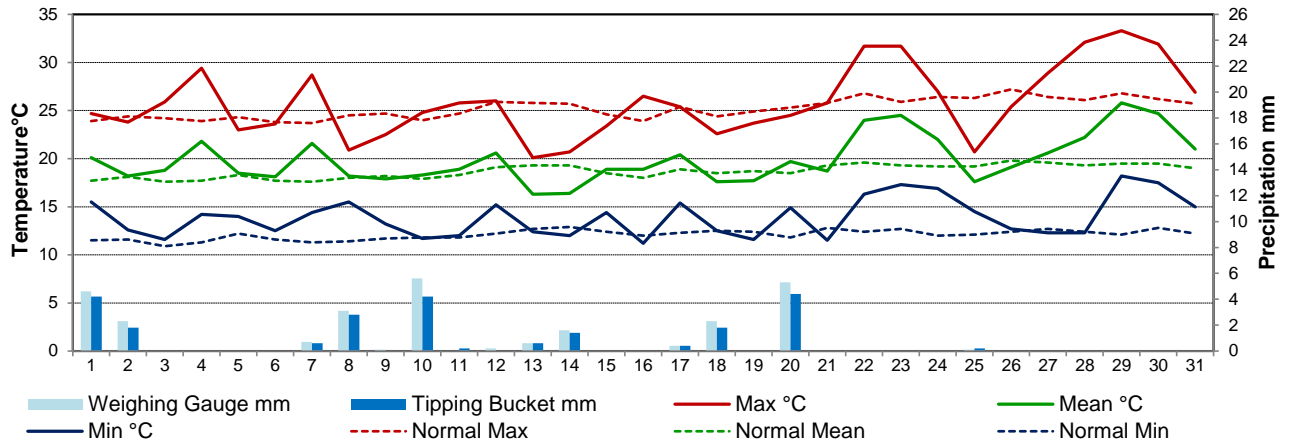


Agriculture and Agri-Food Canada

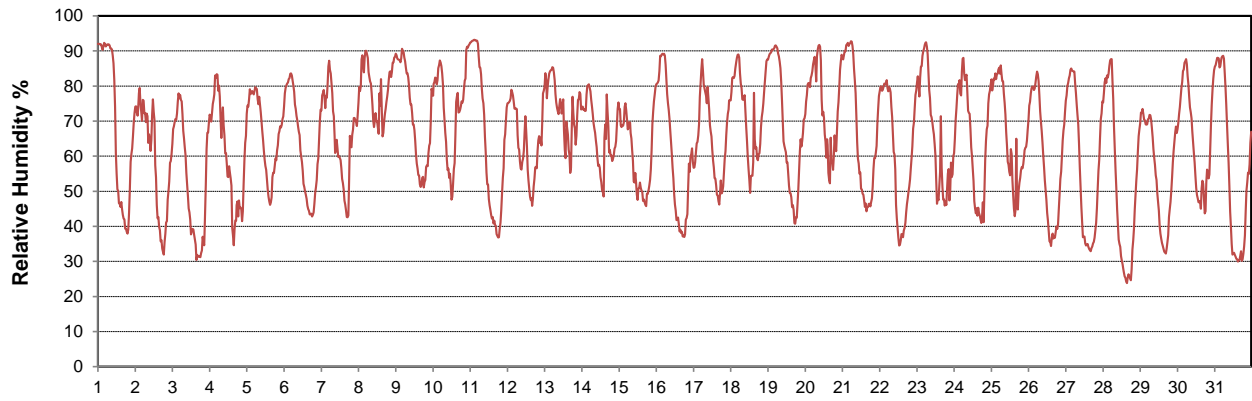
Agriculture et Agroalimentaire Canada



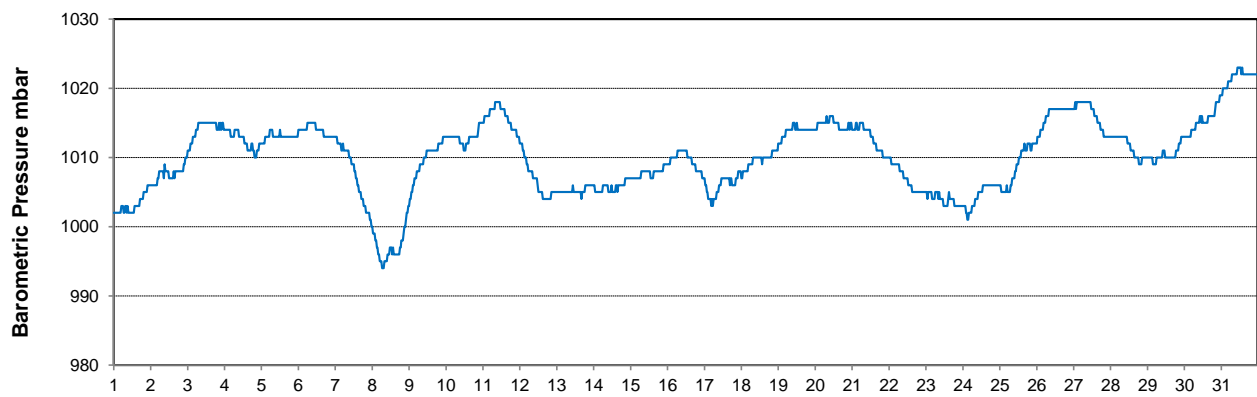
Temperature and Precipitation for July 2020



Relative Humidity for July 2020



Barometric Pressure Corrected to Sea Level for July 2020





SRC CLIMATE REFERENCE STATION DAILY DATA REPORT

SASKATOON STATION 4057180

Saskatchewan 52°09' N 106°36' W 497 m asl Estab. 1963

Preliminary **JULY 2020**

Day	Wind Gust			Soil Temperatures at 0900hrs								Radiation				
	Max	Direction	Time	Surface	5 cm	10 cm	20 cm	50 cm	100 cm	150 cm	300 cm	Bright Sunshine	Possible	% Possible	Global	Diffuse
	km/h			°C	°C	°C	°C	°C	°C	°C	°C	hours	hours		MJ/m ²	MJ/m ²
1	46.0	SSW	14:51	15.0	17.5	18.0	17.5	16.0	12.5	9.5	7.0	8.5	16.7	51.0	21.3	5.8
2	41.5	SSW	14:50	15.0	17.0	17.5	17.5	16.0	12.5	9.5	7.0	8.8	16.6	52.9	17.6	3.7
3	37.2	SW	16:31	17.0	16.0	17.0	17.0	16.0	12.5	10.0	7.0	15.6	16.6	93.9	29.9	2.5
4	34.8	WSW	22:28	19.0	18.0	18.5	18.0	16.0	12.5	10.0	7.0	11.8	16.6	71.1	24.5	4.9
5	44.8	WNW	16:48	16.5	19.0	19.5	19.0	16.5	12.5	10.0	7.0	11.3	16.6	68.2	25.2	5.5
6	33.2	WNW	12:58	18.5	18.0	19.0	19.0	17.0	13.0	10.0	7.0	15.4	16.5	93.1	28.6	3.9
7	35.9	SE	11:04	20.0	19.5	20.0	19.5	17.5	13.0	10.0	7.5	8.7	16.5	52.7	22.6	6.7
8	60.0	SSW	8:37	16.0	20.0	21.0	20.5	17.5	13.0	10.5	7.5	3.1	16.5	18.8	14.0	7.5
9	34.5	NNW	0:53	15.5	18.0	19.0	19.0	17.5	13.5	10.5	7.5	6.3	16.5	38.3	18.1	6.8
10	38.5	SSE	12:28	19.5	17.5	18.0	18.5	17.5	13.5	10.5	7.5	7.5	16.4	45.6	15.8	7.2
11	28.7	SW	13:53	17.5	16.5	17.0	17.5	17.0	13.5	10.5	7.5	15.7	16.4	95.8	28.3	2.7
12	38.2	S	17:19	20.5	18.5	19.0	19.0	17.0	13.5	11.0	7.5	9.0	16.4	55.0	18.9	6.9
13	63.2	WNW	8:19	15.5	18.0	18.5	19.0	17.5	14.0	11.0	8.0	4.5	16.3	27.6	12.2	7.4
14	66.3	W	14:35	16.0	15.5	16.5	17.0	17.0	14.0	11.0	8.0	7.9	16.3	48.5	19.6	7.6
15	54.8	W	12:28	18.0	16.0	16.5	16.5	16.5	14.0	11.0	8.0	12.7	16.3	78.2	26.9	5.2
16	28.2	W	13:08	18.0	16.5	17.0	17.5	16.5	14.0	11.0	8.0	14.1	16.2	87.0	27.0	3.5
17	37.0	NNW	11:05	20.0	19.5	19.5	19.5	17.0	14.0	11.0	8.0	11.6	16.2	71.7	25.3	4.9
18	58.9	W	14:49	16.5	18.5	19.5	19.5	17.5	14.0	11.0	8.0	10.4	16.1	64.5	20.3	6.3
19	29.0	WNW	11:26	16.5	17.0	18.0	18.5	17.5	14.0	11.0	8.0	11.8	16.1	73.3	22.4	7.4
20	28.9	WNW	12:45	14.5	18.0	19.0	19.0	17.0	14.0	11.5	8.5	5.6	16.0	34.9	18.2	6.3
21	22.5	SSE	16:44	19.0	17.5	18.5	18.5	17.5	14.0	11.5	8.5	8.6	16.0	53.8	19.7	5.9
22	41.5	SSE	14:28	21.0	19.0	19.5	19.5	17.5	14.0	11.5	8.5	14.1	16.0	88.4	26.2	3.8
23	42.2	SSW	14:55	24.0	21.5	21.5	21.0	18.0	14.5	11.5	8.5	8.5	15.9	53.4	18.5	5.9
24	30.3	NW	13:18	21.0	21.0	21.5	21.5	18.5	14.5	11.5	8.5	13.1	15.9	82.6	26.1	3.6
25	62.1	W	15:01	17.5	21.0	21.5	21.5	19.0	14.5	11.5	8.5	9.8	15.8	62.0	20.2	7.0
26	50.3	WNW	12:12	17.5	18.0	19.0	20.0	18.5	15.0	12.0	8.5	14.4	15.8	91.4	26.2	3.3
27	41.4	WNW	15:51	19.5	18.5	19.5	20.0	18.5	15.0	12.0	9.0	14.8	15.7	94.2	26.1	3.3
28	34.9	SE	18:54	23.0	19.5	20.0	20.5	18.5	15.0	12.0	9.0	15.2	15.7	97.1	26.8	2.5
29	37.4	SE	13:45	22.0	21.5	22.0	22.0	19.0	15.0	12.0	9.0	14.3	15.6	91.6	25.4	3.3
30	39.2	N	20:35	23.0	22.5	23.0	23.0	19.5	15.0	12.0	9.0	12.7	15.6	81.6	22.5	4.4
31	30.7	N	12:09	20.5	22.0	23.0	23.0	20.0	15.5	12.0	9.0	14.3	15.5	92.3	25.0	3.9
Total												340.1	501.1	67.9	699.4	159.6
Mean				18.5	18.6	19.3	19.3	17.5	13.9	11.0	8.0	1981-2010 Normal for Radiation				
Extreme	66.3	W	14:35	1971-2000 Normal for Soil Temperatures								298.8	501.80	59.5	650.6	213.5
Date	14			17.5	18.0	18.9	16.7	13.1	10.9	7.5	No. of Bright Sunshine days = 31					

Note: Red numbers indicate manual calculation; Red cell indicate data not available

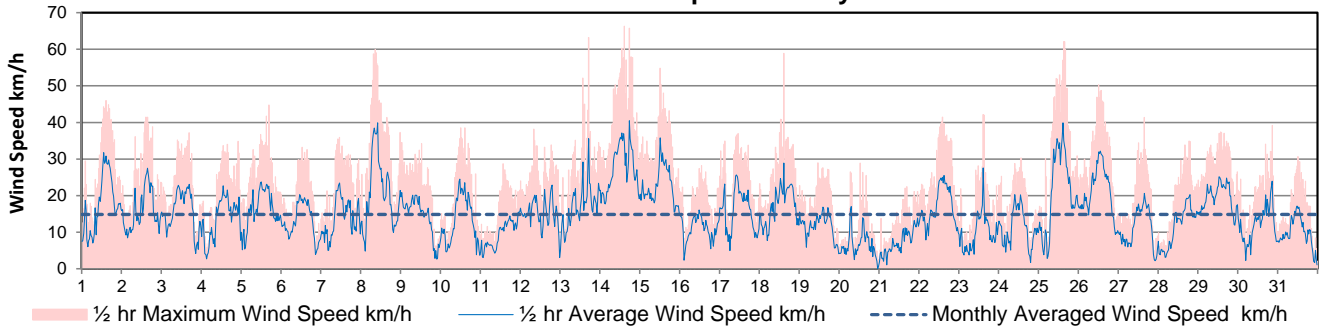
SRC proudly recognizes the following CRS supporters:



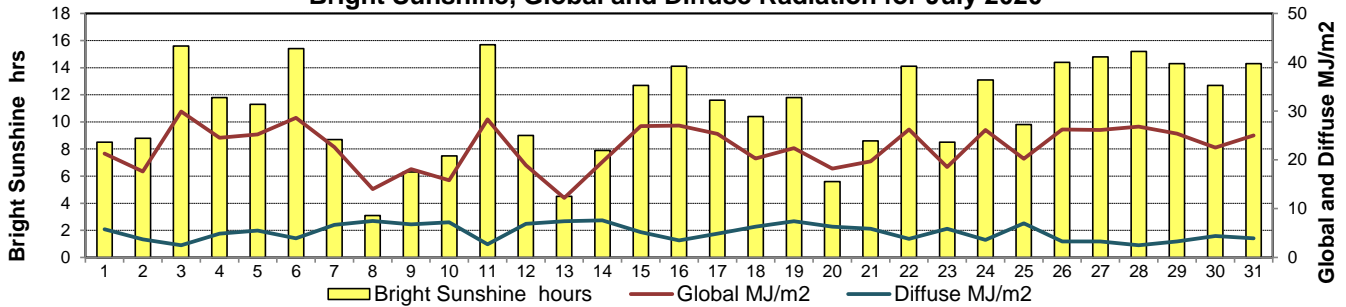
Agriculture and Agri-Food Canada
Agriculture et Agroalimentaire Canada



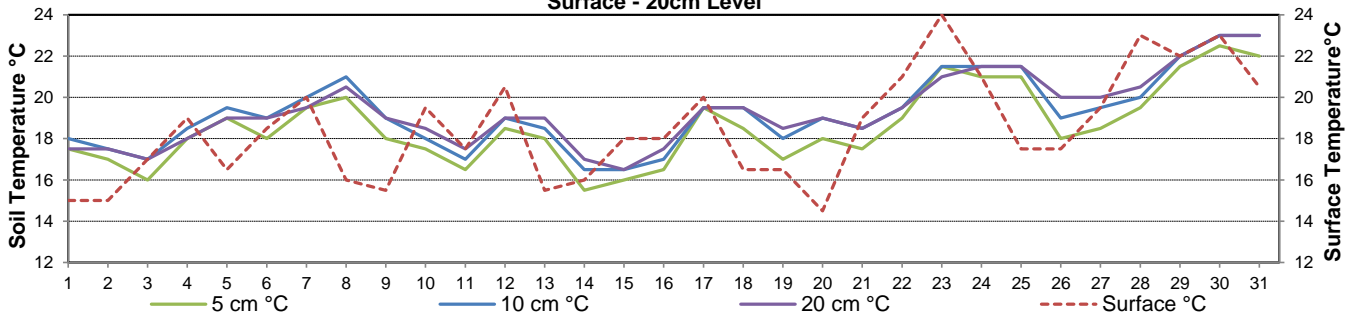
10 meter Tower Wind Speed for July 2020



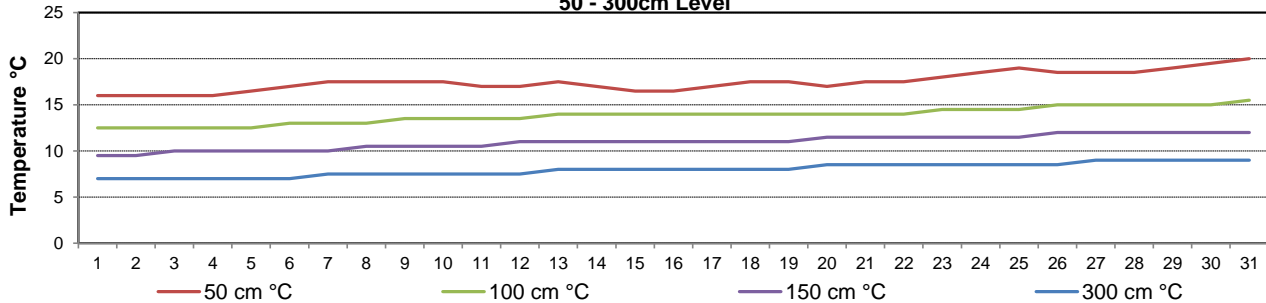
Bright Sunshine, Global and Diffuse Radiation for July 2020



**Soil Temperatures for July 2020
Surface - 20cm Level**



**Soil Temperatures for July 2020
50 - 300cm Level**





SRC CLIMATE REFERENCE STATION DAILY DATA REPORT

SASKATOON STATION 4057180

52°09' N 106°36' W 497 m asl Estab. 1963

Preliminary **JULY 2020**

Extreme Records for July

Max/Min Temperature °C			Precipitation - Monthly mm				Wind Monthly km/h				CRS Bright Sunshine - Monthly						
S'toon Area	Date	Site	S'toon CRS	Date	S'toon Area	Date	Site	S'toon CRS	Date	S'toon Airport	Date	S'toon CRS**	Date	Hours	Year	No. of Days	Year
40.0	(1919,41)1946	(SE SA) US	39.3	05/2001	162.9	1928	SE	125.9	1971					386.2	1974	31	1967*
-0.6	25/1918	SE	1.7	02.09/1967,78	0.0	1988	SC	13.0	1984	113 ^E	05/1955	160	1985	185.5	1998	27	2004

**1975 forward * more than one year

Notable Events for CRS Saskatoon - July						Saskatoon Area Stations			Glossary	
Element	Type	Day	New Record	Old Record	Day / Year	SM	NWMP	c. 1892-1901	T	Trace of precipitation
Temperature	Highest Extreme Minimum Monthly Temperature	16	11.2	10.9	7/2012	SE	Eby	1901-1941	Normal	30 year average beginning with the decade
	Highest Mean Daily	29	25.8	25	1984	US	Univ. of Sask.	1915-1964	SOG	Depth of snow-on-the-ground in cm
	Highest Daily GDD	29	20.8	20	1984	S	Saskatoon	1941-1942	na	not available
	Highest Daily CDD	29	7.8	7.0	1984	SA	Saskatoon A	1942 -	Degree-days	
	Highest Daily Extreme CDD	29	1.8	1	1984	NRC	Nat. Res. Council	1952-1966	Tm	Mean Temperature
					SRC	Sask. Res. Council	1963-	Growing	(Tm-5°C); if Tm ≤ 5°C then GDD = 0	
					SWT	S'toon Water Treatment Plant	1974 -	Heating	(18°C-Tm); if Tm ≤ 18°C then HDD = 0	
					SC	S'toon Central Ave	1974-1989	Cooling	(Tm-18°C); if Tm ≥ 18°C then CDD = 0	
					S1	Saskatoon 1	1976-1978	Extreme Cooling	(Tm-24°C); if Tm ≥ 24°C then CDD = 0	
					S2	Saskatoon 2	1977-1990			
					K	S'toon Kernen Farm	1993-2004			
					KCS	S'toon Kernen Farm CS	1996-			
					RCS	Environment Canada	2008-			
					SF	Sutherland Forestry	1943-1970			

SRC proudly recognizes the following CRS supporters:





SRC CLIMATE REFERENCE STATION DAILY DATA REPORT

SASKATOON STATION 4057180

52°09' N 106°36' W 497 m asl Estab. 1963

Preliminary July 2020

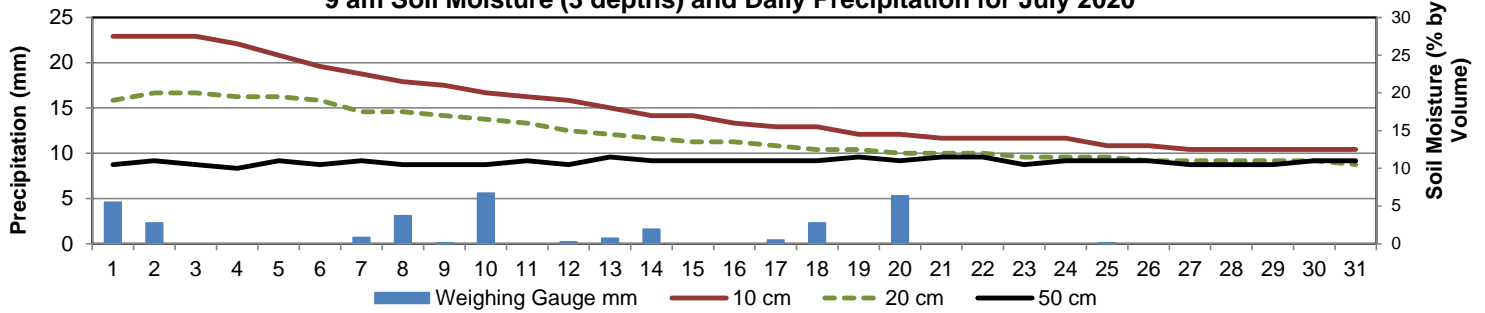
Day	2 meter Wind Speed			Soil Moisture at 0900 hrs (rounded to the 0.5%)														
	Daily Average	Max ½ hr Avg	½ hr Extreme Max	10 cm	20 cm	50 cm												
	km/h	km/h	km/h	% by volume (soil type is Loam (45.5% Sand, 41.1% Silt, 13.3% Clay))														
1	12.0	23.8	37.9	27.5	19.0	10.5												
2	11.0	19.8	33.3	27.5	20.0	11.0												
3	12.0	18.1	30.4	27.5	20.0	10.5												
4	10.0	16.7	28.1	26.5	19.5	10.0												
5	12.0	17.7	33.3	25.0	19.5	11.0												
6	10.0	15.5	27.5	23.5	19.0	10.5												
7	10.0	16.9	29.3	22.5	17.5	11.0												
8	14.0	29.4	47.7	21.5	17.5	10.5												
9	10.0	15.3	27.5	21.0	17.0	10.5												
10	9.0	17.4	28.7	20.0	16.5	10.5												
11	7.0	10.9	23.5	19.5	16.0	11.0												
12	11.0	16.6	28.1	19.0	15.0	10.5												
13	12.0	24.8	44.2	18.0	14.5	11.5												
14	20.0	28.6	47.7	17.0	14.0	11.0												
15	16.0	25.2	40.8	17.0	13.5	11.0												
16	8.0	12.5	25.8	16.0	13.5	11.0												
17	11.0	18.4	29.3	15.5	13.0	11.0												
18	12.0	20.2	40.2	15.5	12.5	11.0												
19	9.0	13.1	21.2	14.5	12.5	11.5												
20	5.0	12.0	24.7	14.5	12.0	11.0												
21	5.0	9.4	18.3	14.0	12.0	11.5												
22	11.0	15.5	31.6	14.0	12.0	11.5												
23	7.0	18.5	33.9	14.0	11.5	10.5												
24	8.0	15.0	25.2	14.0	11.5	11.0												
25	14.0	27.2	47.1	13.0	11.5	11.0												
26	15.0	23.0	37.3	13.0	11.0	11.0												
27	8.0	15.3	29.3	12.5	11.0	10.5												
28	8.0	14.2	28.1	12.5	11.0	10.5												
29	14.0	19.3	30.4	12.5	11.0	10.5												
30	9.0	16.2	26.4	12.5	11.0	11.0												
31	7.0	25.0	25.0	12.5	10.5	11.0												
Total																		
Mean				18	14	10.9												
Extreme	20.0	29.4	47.7	27.5	20	11.5												
Date	14	8	8	1	2	13												

Note: Red numbers indicate manual calculation; Red cell indicate data not available

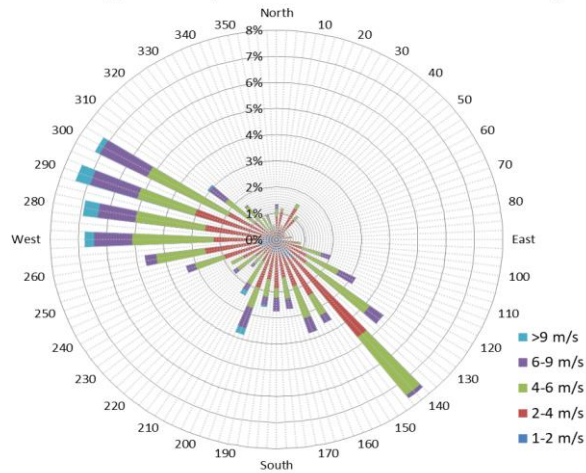
SRC proudly recognizes the following CRS supporters:



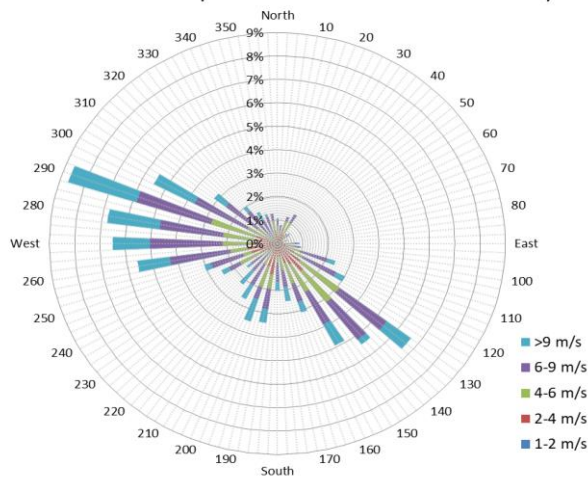
9 am Soil Moisture (3 depths) and Daily Precipitation for July 2020



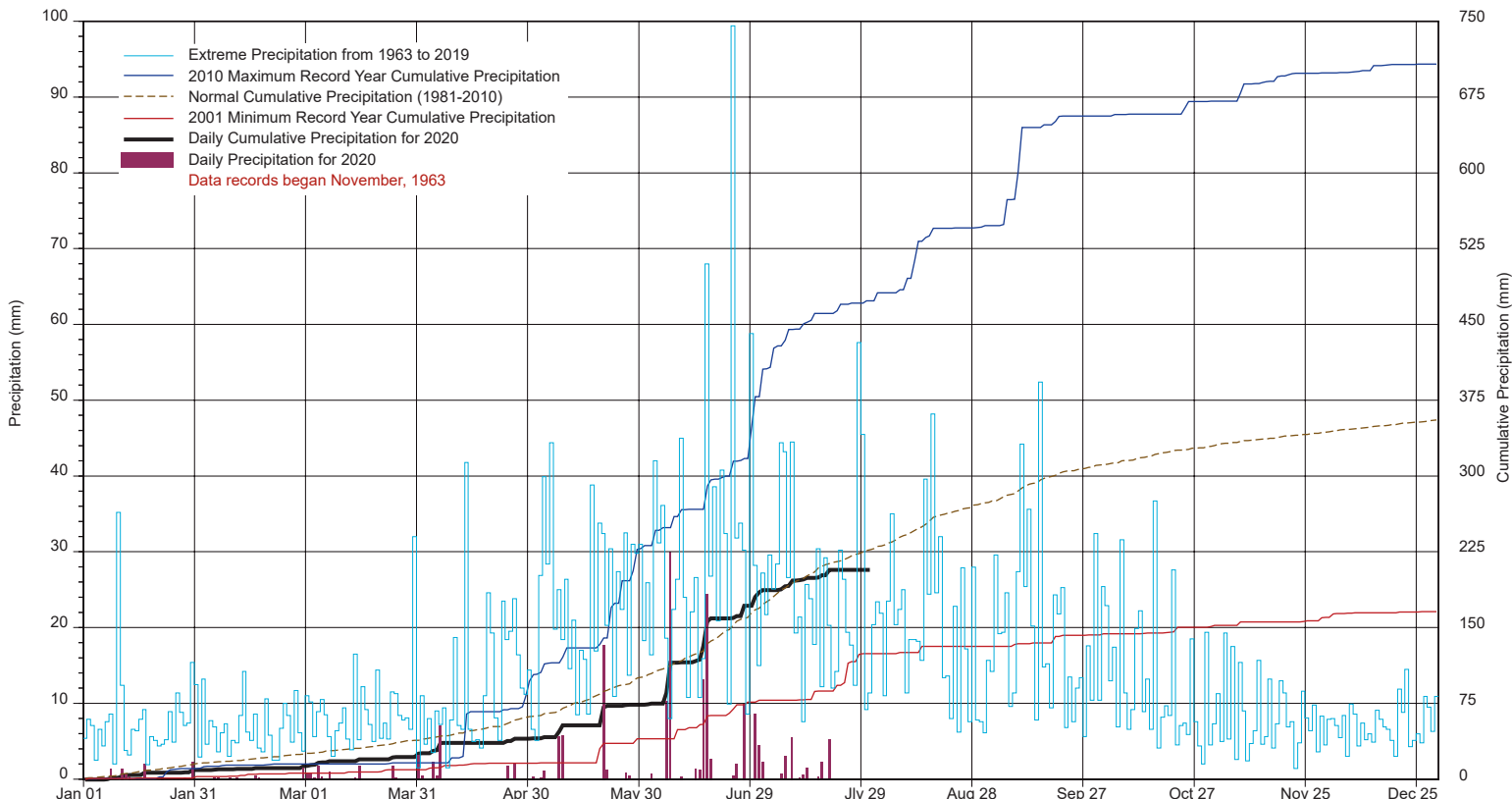
10 minute Average Wind Speed and Direction Saskatoon July 2020



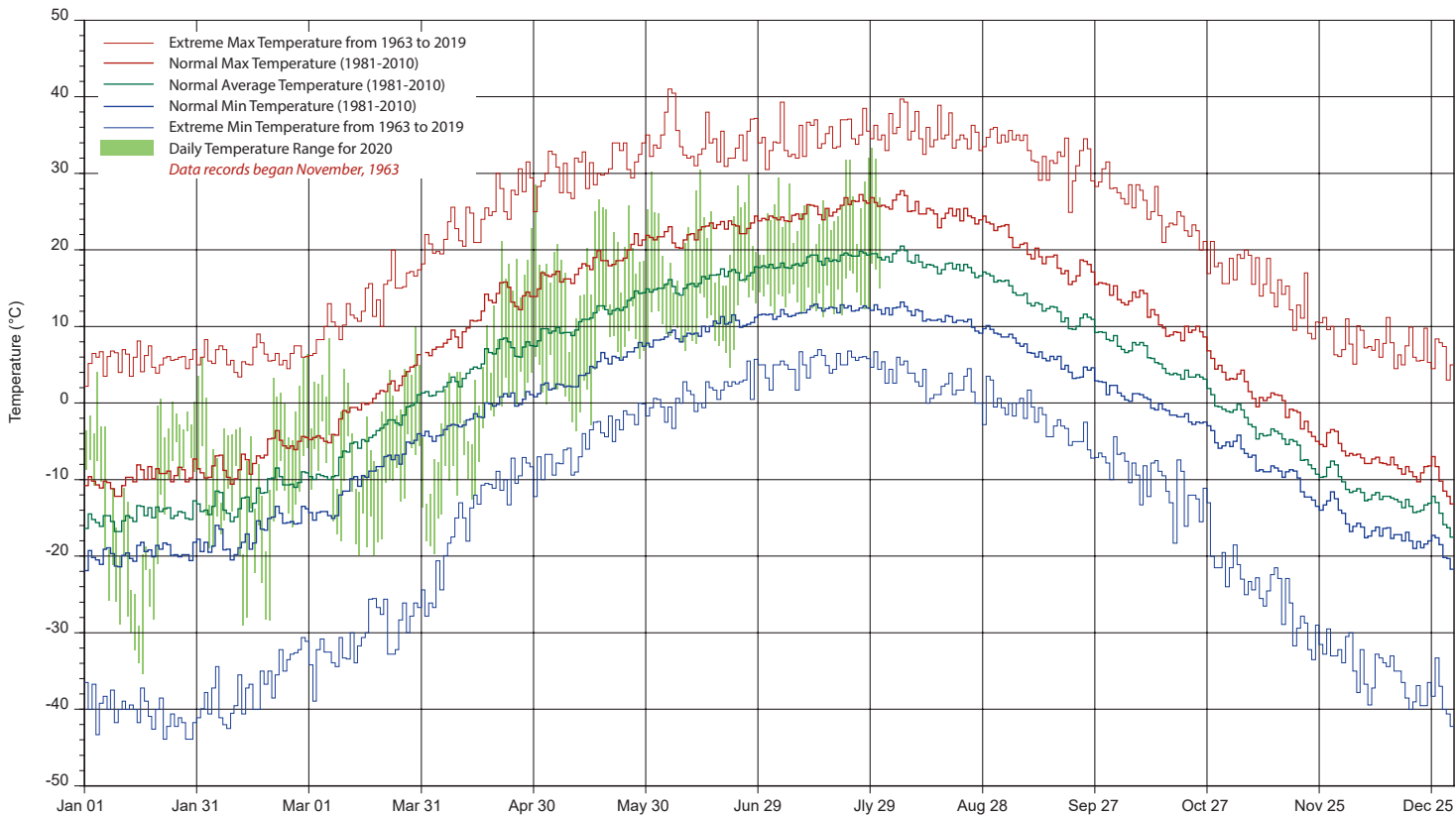
1/2 hr Maximum Wind Speed and Direction Saskatoon July 2020



SASKATCHEWAN RESEARCH COUNCIL SASKATOON CLIMATE REFERENCE STATION 2020 PRECIPITATION AND NORMALS



2020 TEMPERATURES AND NORMALS



SRC proudly recongnizes the following CRS supporters:



Agriculture and Agri-Food Canada
Agriculture et Agroalimentaire Canada

