



SRC CLIMATE REFERENCE STATION DAILY DATA REPORT

SASKATOON STATION 4057180

Saskatchewan 52°09' N 106°36' W 497 m asl Estab. 1963

Preliminary **JULY 2021**

Day	Temperature						Degree-days			Precipitation			Relative Humidity		Station Pressure (sea level)	
	Max	Normal Max	Min	Normal Min	Mean	Normal Mean	Growing	Heating	Cooling	Weighing Gauge	Tipping Bucket	Notes	Max ½ hr Avg	Min ½ hr Avg	Max ½ hr Avg	Min ½ hr Avg
	°C	1991-2020	°C	1991-2020	°C	1991-2020	5°C base	18°C base	18°C base	mm	mm		%	%	mbar	mbar
1	35.6	23.2	19.3	11.9	27.5	17.6	22.5	0.0	9.5	0.0	0.0		67	18	1017	1012
2	40.1	24.1	20.4	11.6	30.3	17.9	25.3	0.0	12.3	0.0	0.0		66	18	1012	1004
3	30.9	24.5	19.8	11.7	25.4	18.1	20.4	0.0	7.4	0.8	0.4	t-storms	80	24	1010	1004
4	25.8	24.3	14.9	12.1	20.4	18.2	15.4	0.0	2.4	0.0	0.0		79	40	1015	1010
5	24.0	24.3	14.6	12.4	19.3	18.4	14.3	0.0	1.3	0.0	0.0		76	39	1022	1016
6	20.3	24.2	9.6	11.7	15.0	18.0	10.0	3.0	0.0	0.7	0.6	showers	91	64	1023	1019
7	28.0	24.5	13.8	12.2	20.9	18.4	15.9	0.0	2.9	0.0	0.0		81	36	1019	1009
8	30.0	24.4	13.6	12.2	21.8	18.3	16.8	0.0	3.8	1.2	1.0	showers	86	32	1012	1009
9	33.1	25.3	15.9	12.6	24.5	19.0	19.5	0.0	6.5	0.0	0.0		85	21	1017	1012
10	34.3	25.9	16.6	13.3	25.5	19.6	20.5	0.0	7.5	0.0	0.0		81	17	1018	1013
11	31.6	24.4	18.4	13.2	25.0	18.8	20.0	0.0	7.0	0.0	0.0		64	27	1013	1010
12	28.6	25.7	13.8	12.4	21.2	19.1	16.2	0.0	3.2	0.0	0.0	smoke	80	21	1017	1013
13	27.6	26.0	12.7	13.2	20.2	19.6	15.2	0.0	2.2	0.0	0.0	smoke	71	31	1019	1017
14	31.3	25.5	14.2	13.1	22.8	19.3	17.8	0.0	4.8	0.0	0.0	smoke	74	23	1018	1011
15	36.5	24.7	16.4	12.8	26.5	18.8	21.5	0.0	8.5	0.0	0.0		70	16	1011	1004
16	28.9	25.0	18.0	12.5	23.5	18.8	18.5	0.0	5.5	0.0	0.0	smoke	60	27	1014	1005
17	36.3	26.0	16.9	13.1	26.6	19.6	21.6	0.0	8.6	0.0	0.0	smoke	71	16	1015	1011
18	25.8	25.1	14.8	13.6	20.3	19.4	15.3	0.0	2.3	0.0	0.0	smoke	89	45	1022	1014
19	19.6	24.9	14.0	12.7	16.8	18.8	11.8	1.2	0.0	0.0	0.0	light drizzle	92	67	1023	1021
20	28.2	25.4	15.5	12.5	21.9	18.9	16.9	0.0	3.9	0.0	0.2	drizzle	93	49	1020	1013
21	30.0	25.2	14.7	13.2	22.4	19.2	17.4	0.0	4.4	0.0	0.0		93	43	1013	1010
22	34.1	26.3	13.4	12.6	23.8	19.5	18.8	0.0	5.8	0.0	0.0		84	10	1011	1006
23	28.7	26.4	9.8	13.7	19.3	20.1	14.3	0.0	1.3	0.0	0.0		80	14	1013	1010
24	28.9	25.8	14.2	12.6	21.6	19.2	16.6	0.0	3.6	0.0	0.0		56	19	1016	1013
25	25.6	25.0	16.2	12.5	20.9	18.8	15.9	0.0	2.9	0.0	0.0		56	28	1016	1013
26	27.8	26.2	14.9	12.2	21.4	19.2	16.4	0.0	3.4	1.5	1.2	light rain	88	31	1016	1013
27	33.1	26.2	15.7	12.7	24.4	19.5	19.4	0.0	6.4	0.0	0.0		72	30	1015	1010
28	30.8	26.0	13.3	12.5	22.1	19.3	17.1	0.0	4.1	0.0	0.0		72	18	1021	1016
29	33.8	27.1	14.2	12.7	24.0	19.9	19.0	0.0	6.0	0.8	0.8	t-storm	81	16	1020	1016
30	31.5	26.6	12.6	13.1	22.1	19.9	17.1	0.0	4.1	0.0	0.0		89	21	1022	1017
31	32.0	25.5	13.5	12.7	22.8	19.1	17.8	0.0	4.8	0.0	0.0		78	17	1026	1023
Total							545.2	4.2	146.4	5.0	4.2		Extreme / Date	Extreme / Date	Extreme / Date	Extreme / Date
Avg	30.1	25.3	15.0	12.6	22.6	19.0	1991-2020 Normal			60.1	Jly 1991-2020 Normal					
Extreme	40.1		9.6				433.2	25.9	56.1	84.7	Year to date 2021 Cumulative		93	10	1026	1004
Date	2		6							228.4	Year to date Cumulative Normal		20	22	31	2

Note: Red numbers indicate manual calculation; Red cell indicate data not available

SRC proudly recognizes the following CRS supporters:

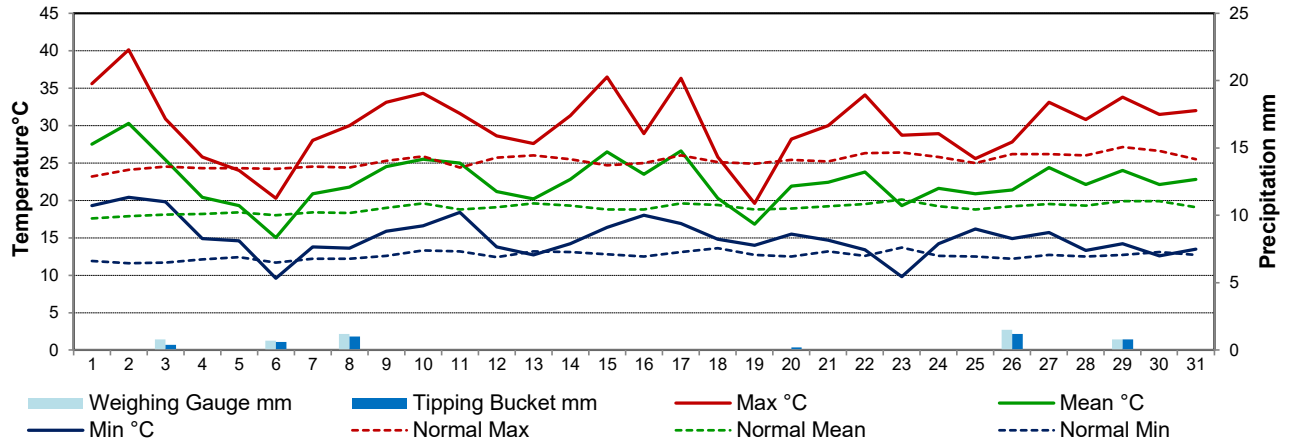


Agriculture and Agri-Food Canada

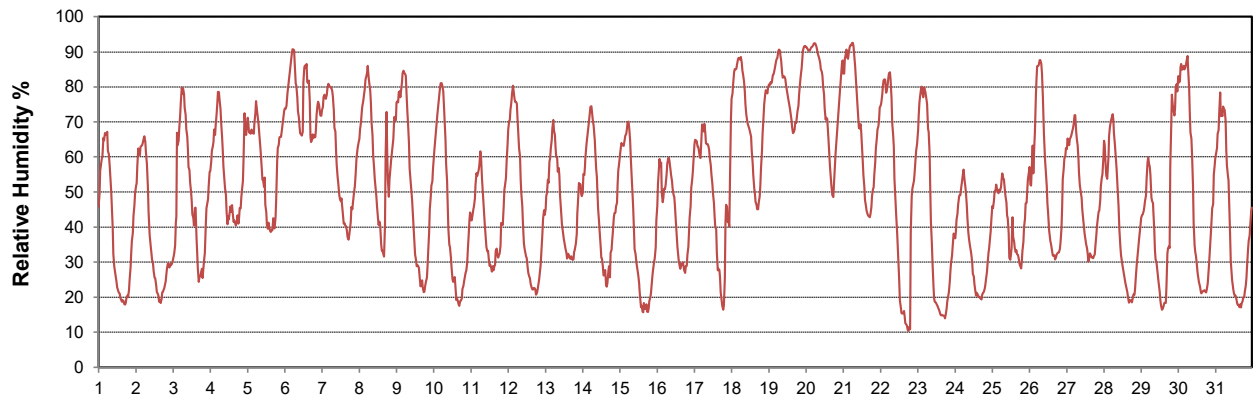
Agriculture et Agroalimentaire Canada



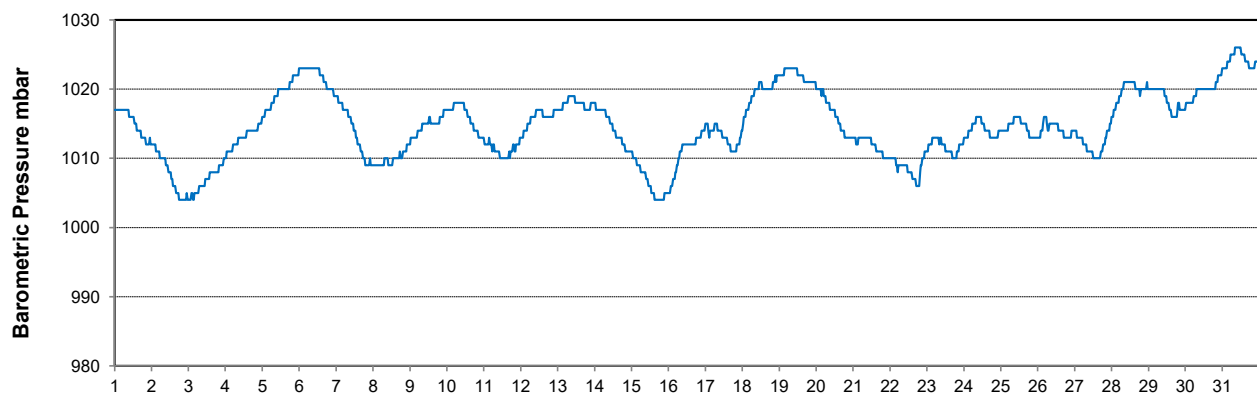
Temperature and Precipitation for July 2021



Relative Humidity for July 2021



Barometric Pressure Corrected to Sea Level for July 2021





SRC CLIMATE REFERENCE STATION DAILY DATA REPORT

SASKATOON STATION 4057180

Saskatchewan 52°09' N 106°36' W 497 m asl Estab. 1963

Preliminary **JULY 2021**

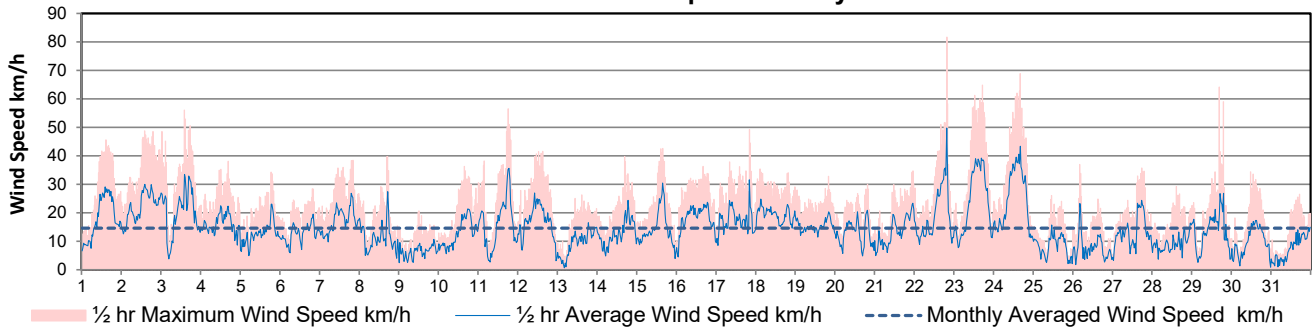
Day	Wind Gust			Wind Speed (10 meters) Daily Average	Soil Temperatures at 0900hrs								Radiation				
	Max	Direction	Time		Surface	5 cm	10 cm	20 cm	50 cm	100 cm	150 cm	300 cm	Bright Sunshine	Possible	% Possible	Global	Diffuse
	km/h			km/h	°C	°C	°C	°C	°C	°C	°C	°C	hours	hours		MJ/m ²	MJ/m ²
1	45.6	ESE	14:44	17.8	27.0	23.5	24.0	23.5	19.0	14.5	11.0	8.0	15.9	16.7	95.4	29.1	5.2
2	48.7	S	14:21	22.0	28.5	24.0	24.5	24.0	19.5	14.5	11.5	8.0	13.6	16.7	81.7	26.9	4.8
3	56.0	WSW	14:23	20.3	25.5	25.5	25.5	25.0	20.0	15.0	11.5	8.5	9.5	16.6	57.1	18.8	9.5
4	38.0	NW	16:58	16.1	22.5	22.0	22.5	23.0	20.0	15.5	11.5	8.5	9.8	16.6	59.0	20.4	9.1
5	34.2	NNE	18:49	12.6	19.5	21.5	22.0	22.5	19.5	15.5	12.0	8.5	6.6	16.6	39.8	18.6	8.8
6	28.4	ESE	19:34	12.7	17.0	20.0	20.5	21.5	19.5	15.5	12.0	8.5	5.0	16.6	30.2	12.5	8.2
7	38.4	SE	20:01	17.1	18.0	18.5	19.0	19.5	18.5	16.0	12.0	8.5	8.8	16.5	53.2	23.5	8.0
8	39.7	ESE	17:16	11.2	22.0	20.0	20.5	20.5	18.5	15.5	12.5	8.5	11.0	16.5	66.7	24.7	7.3
9	20.7	SSW	12:00	6.3	23.0	20.5	21.0	21.5	19.0	15.5	12.5	8.5	14.0	16.5	85.0	25.4	6.2
10	36.3	S	15:46	12.7	25.0	21.5	22.0	22.0	19.0	16.0	12.5	9.0	15.0	16.4	91.2	27.5	6.4
11	56.5	NW	18:28	16.1	25.5	23.5	24.0	23.5	19.5	16.0	12.5	9.0	11.9	16.4	72.5	24.6	7.6
12	41.5	W	14:39	16.9	21.0	22.0	22.5	23.0	20.0	16.0	12.5	9.0	15.6	16.4	95.3	26.5	8.7
13	26.2	NE	15:26	9.2	19.5	21.0	21.5	22.5	20.0	16.0	12.5	9.0	13.5	16.3	82.6	24.0	9.1
14	39.7	WNW	16:58	12.8	22.0	21.5	22.0	22.5	20.0	16.5	13.0	9.0	9.9	16.3	60.7	20.6	10.1
15	42.6	SSW	15:36	14.4	24.5	21.5	22.0	22.5	20.0	16.5	13.0	9.0	13.1	16.3	80.6	24.9	9.2
16	36.3	NE	16:23	17.9	22.0	23.0	23.5	23.5	20.0	16.5	13.0	9.5	12.4	16.2	76.4	21.8	9.2
17	49.2	SE	20:10	17.3	20.0	22.5	23.0	23.0	20.0	16.5	13.0	9.5	10.2	16.2	63.0	21.3	8.3
18	35.4	N	2:59	19.3	17.0	23.0	23.5	23.5	20.5	16.5	13.0	9.5	7.6	16.1	47.1	20.0	8.9
19	32.7	NE	20:07	15.3	15.0	22.0	23.0	23.0	20.5	17.0	13.0	9.5	0.0	16.1	0.0	6.6	4.9
20	30.0	NNE	19:49	12.7	17.0	20.5	21.0	21.0	20.0	17.0	13.5	9.5	4.6	16.1	28.6	11.7	7.1
21	34.7	SE	23:07	13.4	20.5	20.5	21.0	21.0	19.5	17.0	13.5	9.5	12.4	16.0	77.5	22.4	8.3
22	81.6	WNW	19:31	19.1	24.5	23.0	23.5	23.0	19.5	17.0	13.5	10.0	13.1	16.0	82.0	25.4	7.2
23	64.8	W	17:23	23.6	19.0	20.0	21.5	22.5	20.0	17.0	13.5	10.0	14.7	15.9	92.3	26.9	6.9
24	68.9	WNW	16:01	24.9	21.0	20.5	21.0	22.0	20.0	17.0	13.5	10.0	14.4	15.9	90.7	26.5	6.3
25	26.0	NNW	11:09	8.3	19.5	21.0	21.5	22.0	20.0	17.0	13.5	10.0	5.1	15.8	32.2	14.8	9.4
26	37.0	NW	4:13	7.8	17.5	20.0	21.0	21.5	19.5	17.0	13.5	10.0	11.6	15.8	73.5	22.7	7.5
27	35.6	NNE	17:51	13.3	23.0	20.0	21.0	21.5	19.5	17.0	13.5	10.0	11.6	15.7	73.7	22.9	8.0
28	29.2	N	14:48	9.1	20.5	21.0	21.5	22.5	20.0	17.0	14.0	10.0	14.4	15.7	91.8	25.9	6.4
29	64.1	NW	16:47	13.5	23.0	21.5	22.0	23.0	20.0	17.0	14.0	10.0	9.4	15.6	60.1	18.2	8.5
30	34.3	NNW	11:54	9.7	21.5	20.0	21.0	22.0	20.0	17.0	14.0	10.5	13.3	15.6	85.4	23.0	5.4
31	26.5	NNE	17:18	7.5	22.0	20.5	21.0	22.0	20.0	17.0	14.0	10.5	14.8	15.5	95.4	24.1	5.1
Total													342.8	501.5	68.3	682.2	235.6
Mean				14.5	21.4	21.5	22.0	22.4	19.7	16.3	12.9	9.3	1991-2020 Normal				
Extreme	81.6	WNW	19:31		1971- 2000 Normal for Soil Temperatures								305.5	501.60	60.9	662.0	203.3
Date	22				17.5	18.0	18.9	16.7	13.1	10.9	7.5	No. of Bright Sunshine days = 30					

Note: Red numbers indicate manual calculation; Red cell indicate data not available

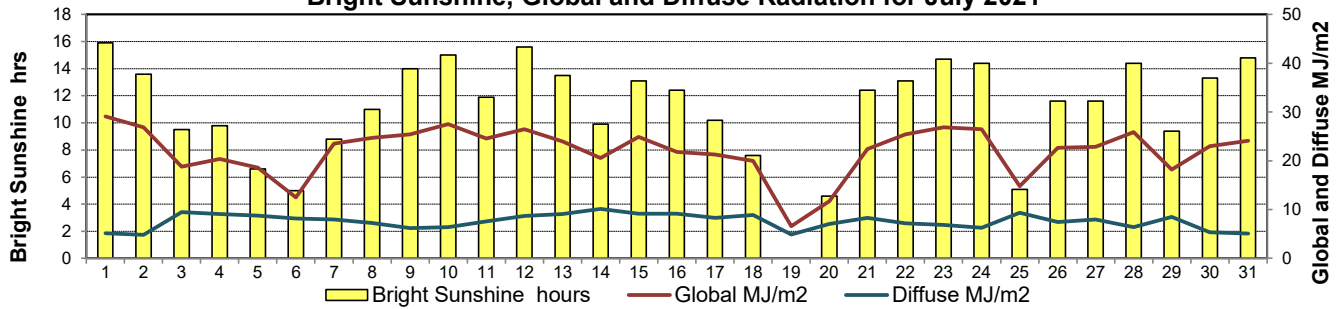
SRC proudly recognizes the following CRS supporters:



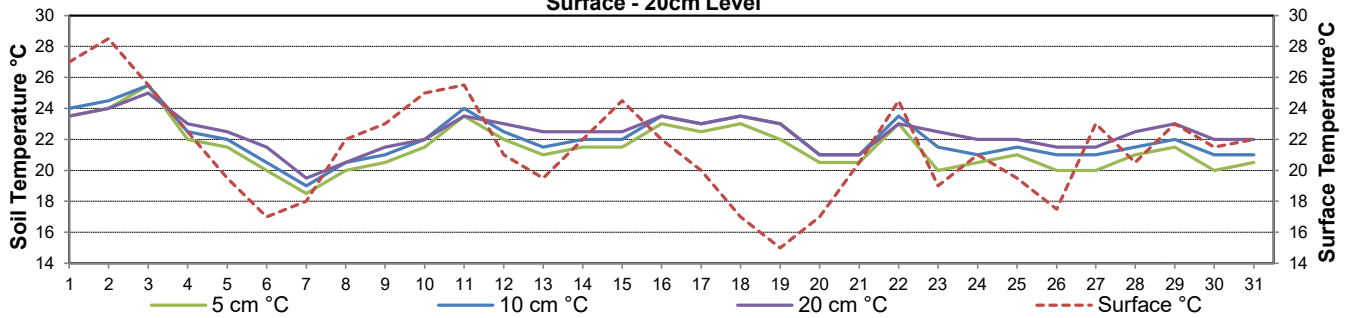
10 meter Tower Wind Speed for July 2021



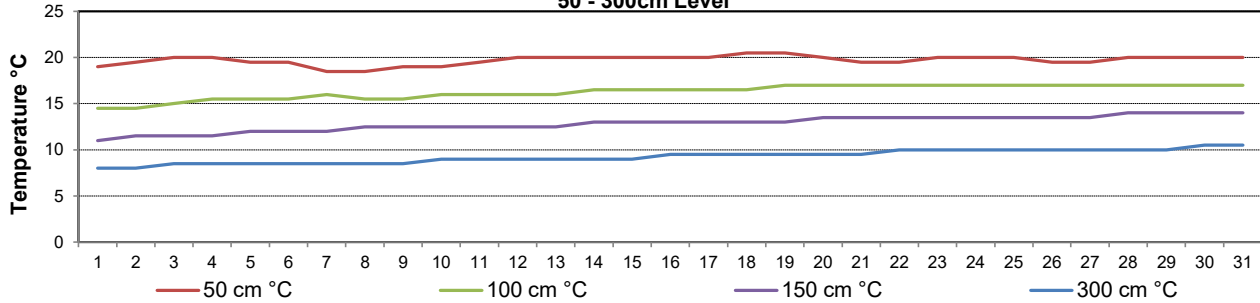
Bright Sunshine, Global and Diffuse Radiation for July 2021



**Soil Temperatures for July 2021
Surface - 20cm Level**



**Soil Temperatures for July 2021
50 - 300cm Level**





SRC CLIMATE REFERENCE STATION DAILY DATA REPORT

SASKATOON STATION 4057180

52°09' N 106°36' W 497 m asl Estab. 1963

Preliminary **JULY 2021**

Extreme Records for July

Max/Min Temperature °C				Precipitation - Monthly mm				Wind Monthly km/h				CRS Bright Sunshine - Monthly					
S'toon Area	Date	Site	S'toon CRS	Date	S'toon Area	Date	Site	S'toon CRS	Date	S'toon Airport	Date	S'toon CRS**	Date	Hours	Year	No. of Days	Year
40.0	(1919,41)1946	(SE SA) US	39.3	05/2001	162.9	1928	SE	125.9	1971	113 ^E	05/1955	160	1985	386.2	1974	31	1967*
-0.6	25/1918	SE	1.7	02.09/1967,78	0.0	1988	SC	13.0	1984					185.5	1998	27	2004

**1975 forward * more than one year

Notable Events for CRS Saskatoon - July						Saskatoon Area Stations			Glossary	
Element	Type	Day	New Record	Old Record	Day / Year	SM	NWMP	c. 1892-1901	T	Trace of precipitation
Temperature	Highest Maximum Daily	1	35.6	30.5	1988	SE	Eby	1901-1941	Normal	30 year average beginning with the decade
		2	40.1	33.0	1986	US	Univ. of Sask.	1915-1964	SOG	Depth of snow-on-the-ground in cm
		9	33.1	32.0	1980	S	Saskatoon	1941-1942	na	not available
		15	36.5	33.3	2001	SA	Saskatoon A	1942 -	Degree-days	
		17	36.3	35.2	2003	NRC	Nat. Res. Council	1952-1966	Tm	Mean Temperature
	Highest Minimum Daily	1	19.3	17.5	1990	SRC	Sask. Res. Council	1963-	Growing	(Tm-5°C); if Tm ≤ 5°C then GDD = 0
		2	20.4	15.5	1982	SWT	S'toon Water Treatment Plant	1974 -	Heating	(18°C-Tm); if Tm ≤ 18°C then HDD = 0
		3	19.8	18.3	2013	SC	S'toon Central Ave	1974-1989	Cooling	(Tm-18°C); if Tm ≥ 18°C then CDD = 0
	Highest Mean Daily	16	18.0	17.8	1964	S1	Saskatoon 1	1976-1978	Extreme Cooling	(Tm-24°C); if Tm ≥ 24°C then CDD = 0
		1	27.5	23.7	2003	S2	Saskatoon 2	1977-1990		
		2	30.3	22.8	1986	K	S'toon Kernen Farm	1993-2004		
		3	25.4	24.8	1996	KCS	S'toon Kernen Farm CS	1996-		
		9	24.5	24.3	1997	RCS	Environment Canada	2008-		
		11	25	24.7	1964	SF	Sutherland Forest	1943-1970		
		15	26.5	24.7	2002					
	17	26.6	25.4	2003						
	Highest Extreme Mean Monthly Temperature		2	30.3	29.5	28/1984				
Highest Extreme Maximum Monthly Temperature		2	40.1	39.3	5/2001					
Highest Average Maximum Monthly			30.1	28.5	2007					
Highest Average Minimum Monthly			15.0	15.0	2007					

Element	Type	Day	New Record	Old Record	Day / Year
Precipitation	Lowest Monthly Total		5.0	13.0	1984
	Lowest Daily Maximum for entire Month	26	1.5	5.1	29/1964

SRC proudly recognizes the following CRS supporters:



Agriculture and Agri-Food Canada / Agriculture et Agroalimentaire Canada





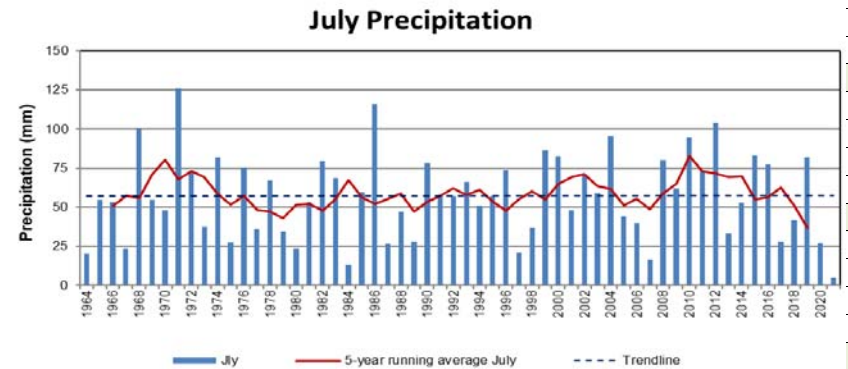
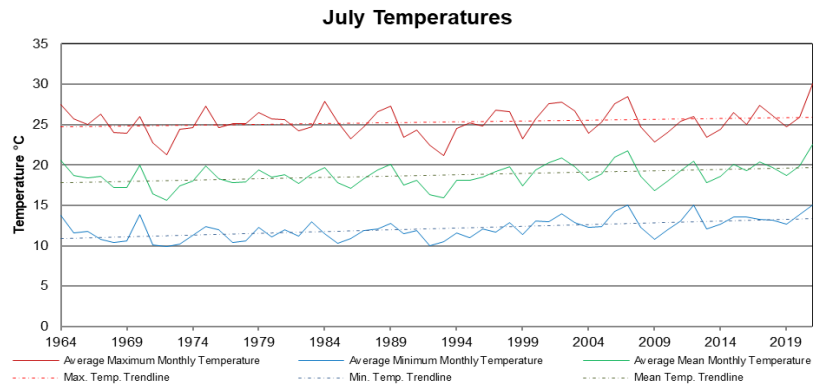
SRC CLIMATE REFERENCE STATION DAILY DATA REPORT

SASKATOON STATION 4057180

52°09' N 106°36' W 497 m asl Estab. 1963

Preliminary July 2021

Day	2 meter Wind Speed			Soil Moisture at 0900 hrs (rounded to the 0.5%)		
	Daily Average	Max ½ hr Avg	½ hr Extreme Max	10 cm	20 cm	50 cm
	km/h	km/h	km/h	% by volume (soil type is Loam (45.5% Sand, 41.1% Silt, 13.3% Clay))		
1	12.0	21.0	36.2	11.0	9.5	10.5
2	14.0	19.3	39.6	10.5	10.0	10.5
3	15.0	24.6	44.2	11.0	9.5	10.5
4	12.0	16.9	30.4	10.5	10.0	10.5
5	10.0	16.8	29.3	10.5	9.5	10.0
6	10.0	14.1	23.5	10.5	9.5	10.0
7	12.0	20.3	31.6	10.0	9.0	10.0
8	8.0	19.8	31.0	10.5	9.0	10.0
9	5.0	8.0	17.2	10.0	9.0	10.5
10	9.0	16.7	29.3	10.0	9.5	9.5
11	11.0	24.9	41.4	10.5	9.5	10.0
12	12.0	19.3	34.4	10.0	9.0	10.0
13	7.0	12.1	21.2	10.0	9.0	10.0
14	9.0	16.6	28.1	9.5	9.0	9.5
15	10.0	22.6	34.4	9.5	9.5	10.0
16	12.0	17.5	29.3	10.0	9.0	10.0
17	13.0	23.6	43.1	9.5	9.0	9.5
18	14.0	16.8	28.1	9.5	9.0	10.0
19	12.0	14.1	24.7	9.5	9.0	10.0
20	10.0	16.1	22.4	9.0	9.0	10.0
21	10.0	17.4	26.4	9.0	8.5	9.5
22	14.0	34.3	60.4	9.5	9.0	9.5
23	17.0	29.0	48.8	9.5	8.5	9.5
24	18.0	31.6	52.3	9.0	9.0	9.5
25	6.0	12.4	22.4	9.0	8.5	9.5
26	6.0	16.5	28.1	8.5	9.0	9.5
27	10.0	16.7	27.0	8.5	9.0	9.5
28	7.0	11.4	22.9	9.0	8.5	9.5
29	10.0	18.2	43.1	9.0	8.5	9.5
30	7.0	13.6	27.5	9.0	8.5	9.5
31	5.0	24.0	24.0	8.5	8.5	9.5
Total						
Mean				10	9	9.9
Extreme	18.0	34.3	60.4	11	10	10.5
Date	24	22	22	1	2	1

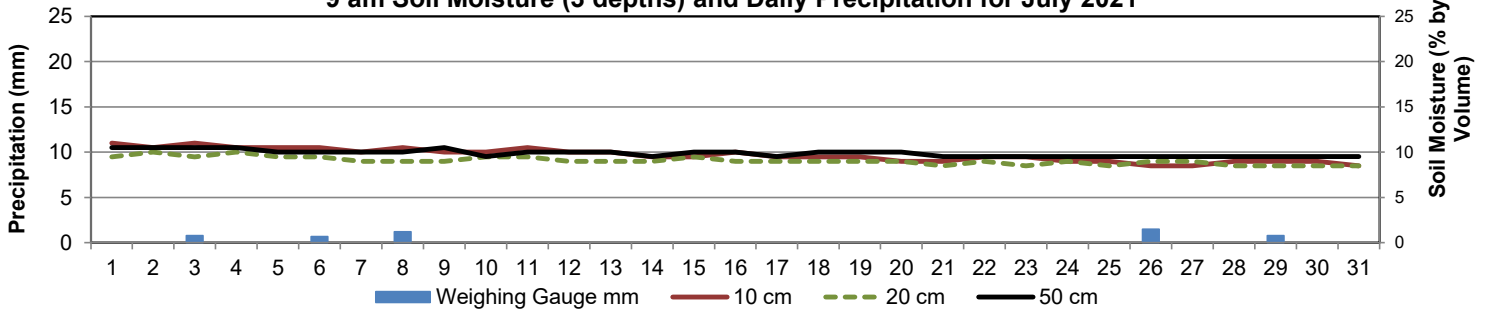


Note: Red numbers indicate manual calculation; Red cell indicate data not available

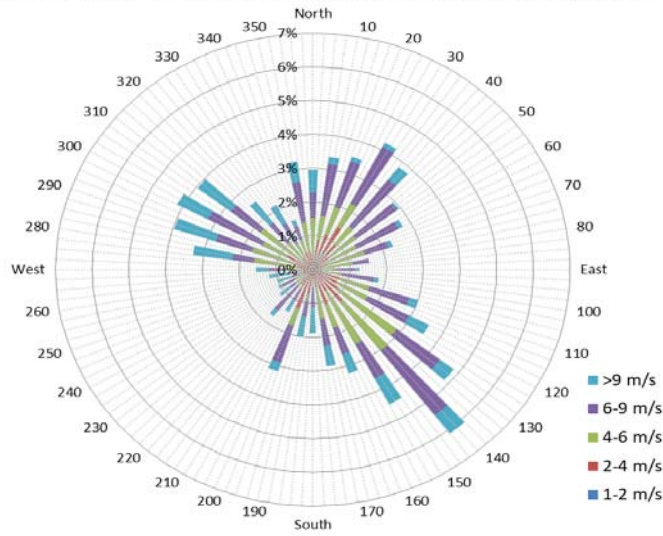
SRC proudly recognizes the following CRS supporters:



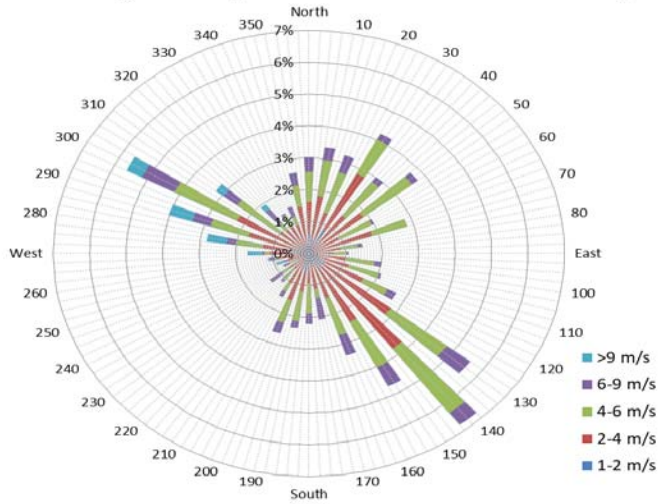
9 am Soil Moisture (3 depths) and Daily Precipitation for July 2021



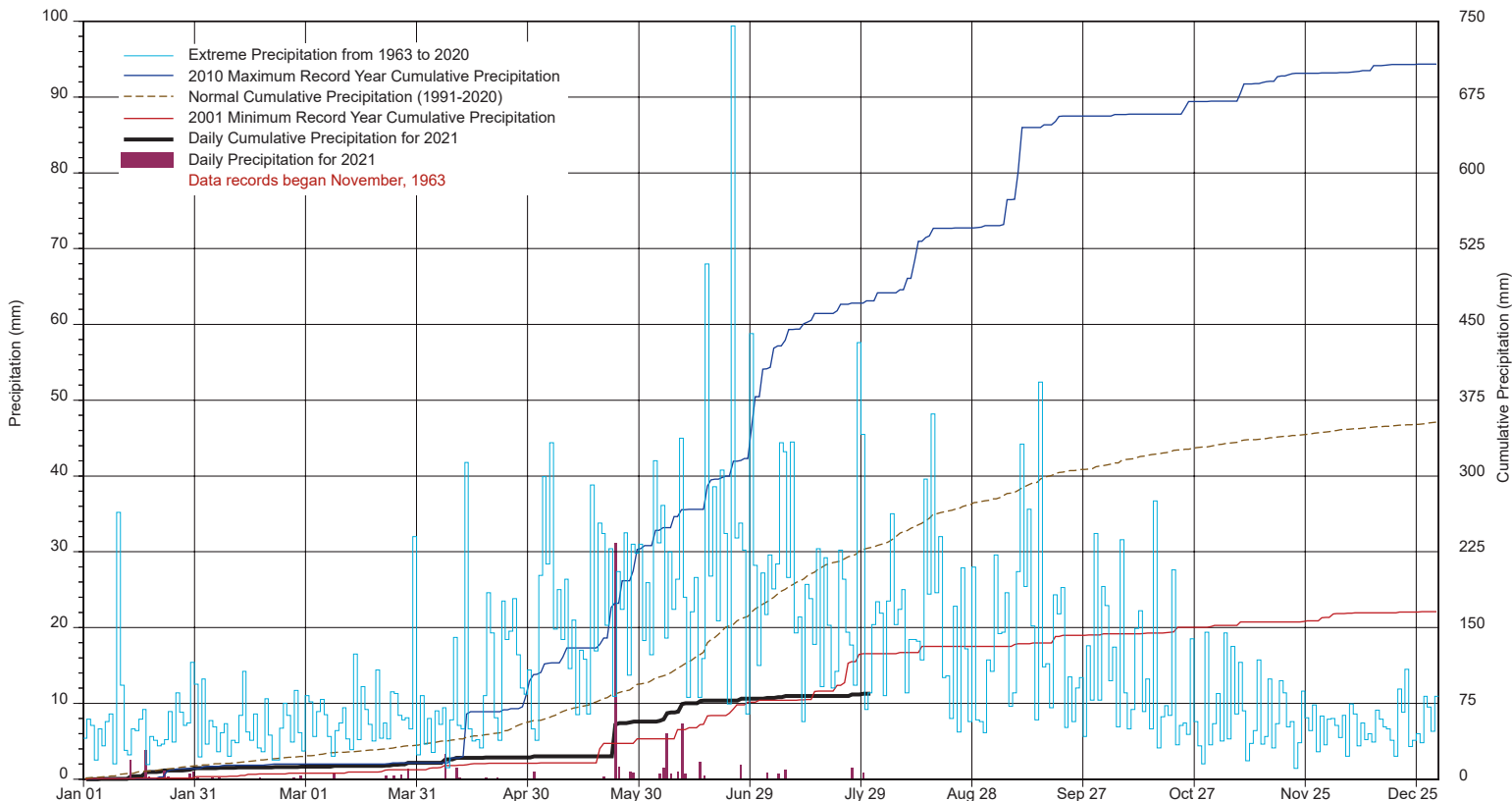
1/2 hr Maximum Wind Speed and Direction Saskatoon July 2021



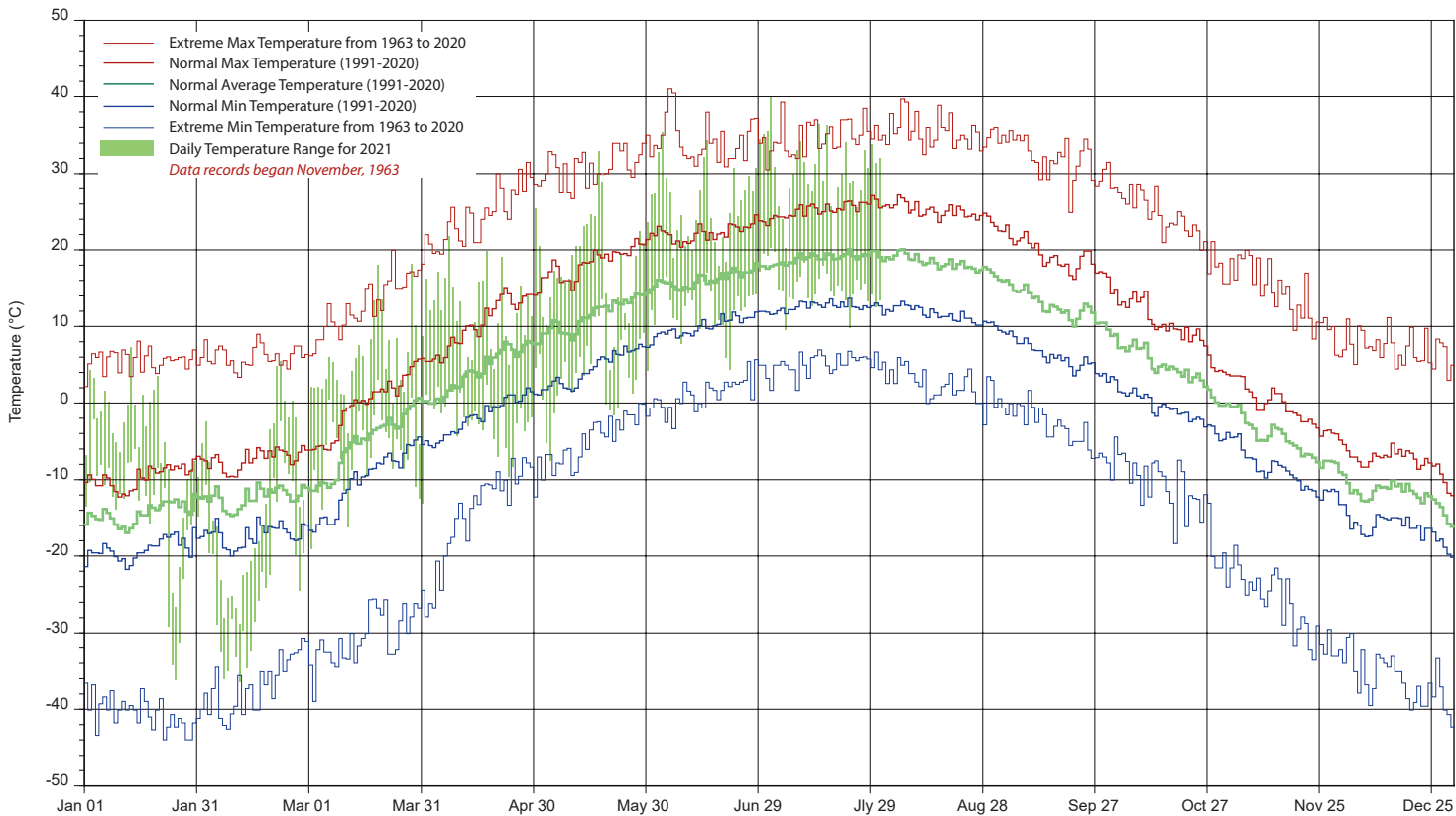
10 minute Average Wind Speed and Direction Saskatoon July 2021



SASKATCHEWAN RESEARCH COUNCIL SASKATOON CLIMATE REFERENCE STATION 2021 PRECIPITATION AND NORMALS



2021 TEMPERATURES AND NORMALS



SRC proudly recongnizes the following CRS supporters:



Agriculture and
Agri-Food Canada

Agriculture et
Agroalimentaire Canada



UNIVERSITY OF
SASKATCHEWAN

