



SRC CLIMATE REFERENCE STATION DAILY DATA REPORT

SASKATOON STATION 4057180

Saskatchewan 52°09' N 106°36' W 497 m asl Estab. 1963

Preliminary **JULY 2024**

| Day | Temperature | | | | | | Degree-days | | | Precipitation | | | Relative Humidity | | Station Pressure (sea level) | |
|---------|-------------|------------|------|------------|------|-------------|------------------|-----------|-----------|-----------------------------|--------------------------------|-----------------------|-------------------|----------------|------------------------------|----------------|
| | Max | Normal Max | Min | Normal Min | Mean | Normal Mean | Growing | Heating | Cooling | Geonor all-season ppt Gauge | Tipping Bucket | Notes | Max ½ hr Avg | Min ½ hr Avg | Max ½ hr Avg | Min ½ hr Avg |
| | °C | 1991-2020 | °C | 1991-2020 | °C | 1991-2020 | 5°C base | 18°C base | 18°C base | mm | mm | | % | % | mbar | mbar |
| 1 | 20.7 | 23.2 | 14.5 | 11.9 | 17.6 | 17.6 | 12.6 | 0.4 | 0.0 | 1.2 | 1.3 | showers | 88 | 71 | 1011 | 1005 |
| 2 | 23.8 | 24.1 | 12.5 | 11.6 | 18.2 | 17.9 | 13.2 | 0.0 | 0.2 | 0.2 | 0.3 | showers | 91 | 49 | 1008 | 1005 |
| 3 | 26.0 | 24.5 | 12.8 | 11.7 | 19.4 | 18.1 | 14.4 | 0.0 | 1.4 | 0.0 | 0.0 | | 89 | 46 | 1014 | 1008 |
| 4 | 25.5 | 24.3 | 14.6 | 12.1 | 20.1 | 18.2 | 15.1 | 0.0 | 2.1 | 0.7 | 0.5 | t-storm | 84 | 45 | 1017 | 1014 |
| 5 | 26.0 | 24.3 | 14.2 | 12.4 | 20.1 | 18.4 | 15.1 | 0.0 | 2.1 | 0.0 | 0.0 | | 83 | 41 | 1017 | 1011 |
| 6 | 26.7 | 24.2 | 14.4 | 11.7 | 20.6 | 18.0 | 15.6 | 0.0 | 2.6 | 0.0 | 0.0 | | 79 | 36 | 1012 | 1010 |
| 7 | 26.4 | 24.5 | 12.7 | 12.2 | 19.6 | 18.4 | 14.6 | 0.0 | 1.6 | 0.0 | 0.0 | smoke | 86 | 38 | 1016 | 1013 |
| 8 | 29.7 | 24.4 | 14.7 | 12.2 | 22.2 | 18.3 | 17.2 | 0.0 | 4.2 | 0.0 | 0.0 | smoke | 83 | 36 | 1014 | 1011 |
| 9 | 30.0 | 25.3 | 17.2 | 12.6 | 23.6 | 19.0 | 18.6 | 0.0 | 5.6 | 0.0 | 0.0 | | 84 | 35 | 1016 | 1012 |
| 10 | 31.2 | 25.9 | 17.0 | 13.3 | 24.1 | 19.6 | 19.1 | 0.0 | 6.1 | 0.0 | 0.0 | | 84 | 37 | 1016 | 1008 |
| 11 | 32.3 | 24.4 | 21.0 | 13.2 | 26.7 | 18.8 | 21.7 | 0.0 | 8.7 | 1.0 | 0.8 | | 83 | 53 | 1008 | 1006 |
| 12 | 25.9 | 25.7 | 15.0 | 12.4 | 20.5 | 19.1 | 15.5 | 0.0 | 2.5 | 15.8 | 15.7 | | 90 | 38 | 1016 | 1008 |
| 13 | 25.5 | 26.0 | 11.9 | 13.2 | 18.7 | 19.6 | 13.7 | 0.0 | 0.7 | 2.6 | 2.5 | | 88 | 39 | 1017 | 1013 |
| 14 | 22.5 | 25.5 | 14.2 | 13.1 | 18.4 | 19.3 | 13.4 | 0.0 | 0.4 | 0.0 | 0.0 | | 90 | 54 | 1014 | 1013 |
| 15 | 24.1 | 24.7 | 10.3 | 12.8 | 17.2 | 18.8 | 12.2 | 0.8 | 0.0 | 0.0 | 0.0 | | 92 | 47 | 1015 | 1013 |
| 16 | 26.5 | 25.0 | 11.8 | 12.5 | 19.2 | 18.8 | 14.2 | 0.0 | 1.2 | 0.0 | 0.0 | | 92 | 44 | 1019 | 1014 |
| 17 | 30.1 | 26.0 | 14.4 | 13.1 | 22.3 | 19.6 | 17.3 | 0.0 | 4.3 | 0.0 | 0.0 | | 78 | 33 | 1021 | 1017 |
| 18 | 34.5 | 25.1 | 17.3 | 13.6 | 25.9 | 19.4 | 20.9 | 0.0 | 7.9 | 0.0 | 0.0 | | 72 | 25 | 1017 | 1014 |
| 19 | 33.5 | 24.9 | 19.1 | 12.7 | 26.3 | 18.8 | 21.3 | 0.0 | 8.3 | 0.0 | 0.0 | | 83 | 31 | 1018 | 1015 |
| 20 | 31.4 | 25.4 | 19.1 | 12.5 | 25.3 | 18.9 | 20.3 | 0.0 | 7.3 | 0.0 | 0.0 | smoke | 90 | 48 | 1021 | 1018 |
| 21 | 29.4 | 25.2 | 18.6 | 13.2 | 24.0 | 19.2 | 19.0 | 0.0 | 6.0 | 0.0 | 0.0 | smoke | 93 | 46 | 1022 | 1019 |
| 22 | 25.5 | 26.3 | 15.2 | 12.6 | 20.4 | 19.5 | 15.4 | 0.0 | 2.4 | 0.0 | 0.0 | smoke | 93 | 54 | 1020 | 1018 |
| 23 | 26.2 | 26.4 | 15.7 | 13.7 | 21.0 | 20.1 | 16.0 | 0.0 | 3.0 | 0.0 | 0.0 | smoke | 92 | 66 | 1018 | 1012 |
| 24 | 32.6 | 25.8 | 19.0 | 12.6 | 25.8 | 19.2 | 20.8 | 0.0 | 7.8 | 0.0 | 0.0 | smoke | 89 | 34 | 1012 | 1010 |
| 25 | 34.3 | 25.0 | 18.2 | 12.5 | 26.3 | 18.8 | 21.3 | 0.0 | 8.3 | 0.4 | 0.3 | smoke / fog / t-storm | 91 | 19 | 1010 | 1003 |
| 26 | 25.2 | 26.2 | 13.2 | 12.2 | 19.2 | 19.2 | 14.2 | 0.0 | 1.2 | 0.0 | 0.0 | | 67 | 30 | 1006 | 1003 |
| 27 | 19.8 | 26.2 | 14.0 | 12.7 | 16.9 | 19.5 | 11.9 | 1.1 | 0.0 | 0.0 | 0.0 | | 77 | 47 | 1004 | 1001 |
| 28 | 27.9 | 26.0 | 11.9 | 12.5 | 19.9 | 19.3 | 14.9 | 0.0 | 1.9 | 0.0 | 0.0 | | 87 | 32 | 1007 | 1004 |
| 29 | 32.1 | 27.1 | 14.9 | 12.7 | 23.5 | 19.9 | 18.5 | 0.0 | 5.5 | 0.0 | 0.0 | | 74 | 19 | 1006 | 1002 |
| 30 | 28.5 | 26.6 | 15.4 | 13.1 | 22.0 | 19.9 | 17.0 | 0.0 | 4.0 | 0.0 | 0.0 | | 73 | 30 | 1009 | 1001 |
| 31 | 33.1 | 25.5 | 14.0 | 12.7 | 23.6 | 19.1 | 18.6 | 0.0 | 5.6 | 0.0 | 0.0 | | 80 | 23 | 1011 | 1008 |
| Total | | | | | | | 513.6 | 2.3 | 112.9 | 21.9 | 21.3 | | Extreme / Date | Extreme / Date | Extreme / Date | Extreme / Date |
| Avg | 28.0 | 25.3 | 15.1 | 12.6 | 21.6 | 19.0 | 1991-2020 Normal | | | 60.1 | Jly 1991-2020 Normal | | | | | |
| Extreme | 34.5 | | 10.3 | | | | 433.2 | 25.9 | 56.1 | 268.3 | Year to date 2024 Cumulative | | 93 | 19 | 1022 | 1001 |
| Date | 18 | | 15 | | | | | | | 228.4 | Year to date Cumulative Normal | | 21 | 25 | 21 | 27 |

Note: Red numbers indicate manual calculation; Red cell indicate data not available

Precipitation is measured precipitation. It has not been corrected for wind speed.

SRC proudly recognizes the following CRS supporters:

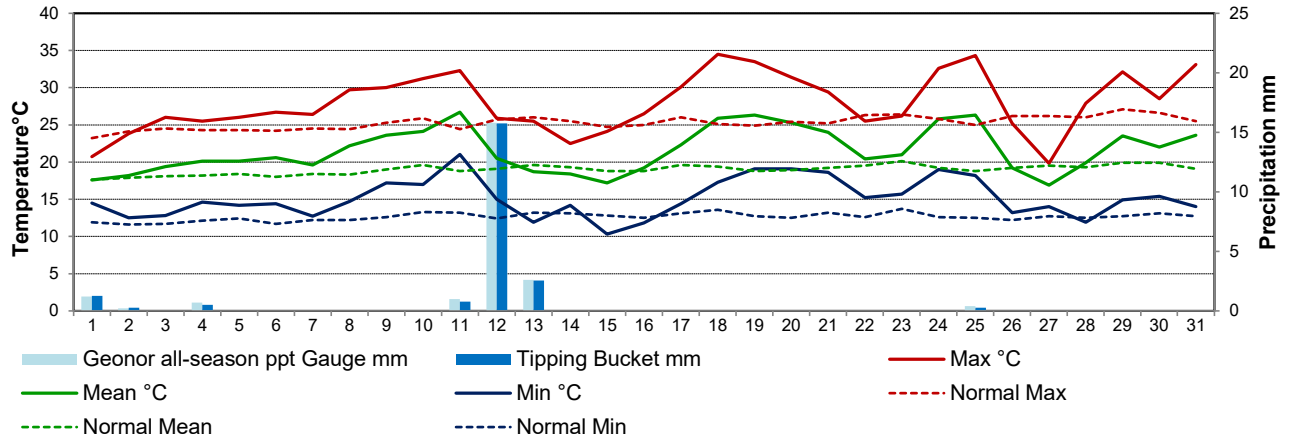


Agriculture and Agri-Food Canada

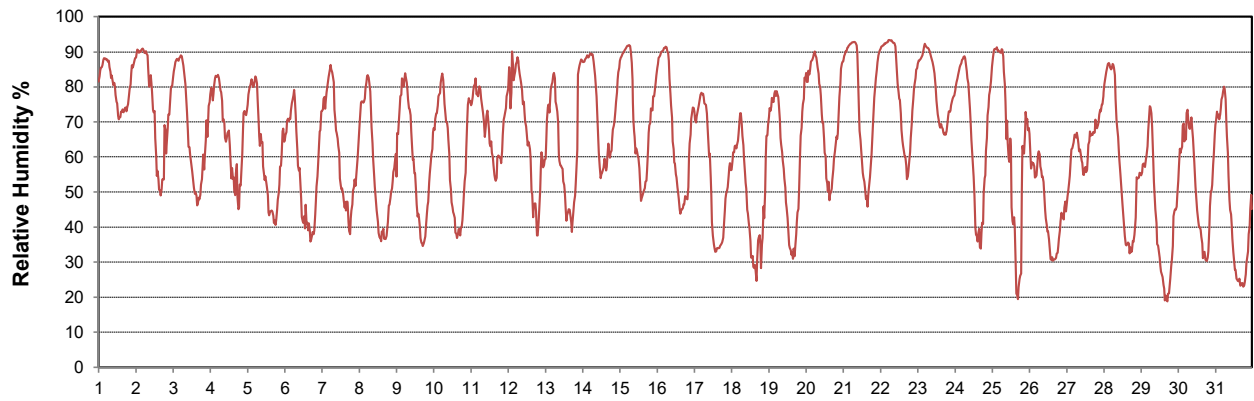
Agriculture et Agroalimentaire Canada



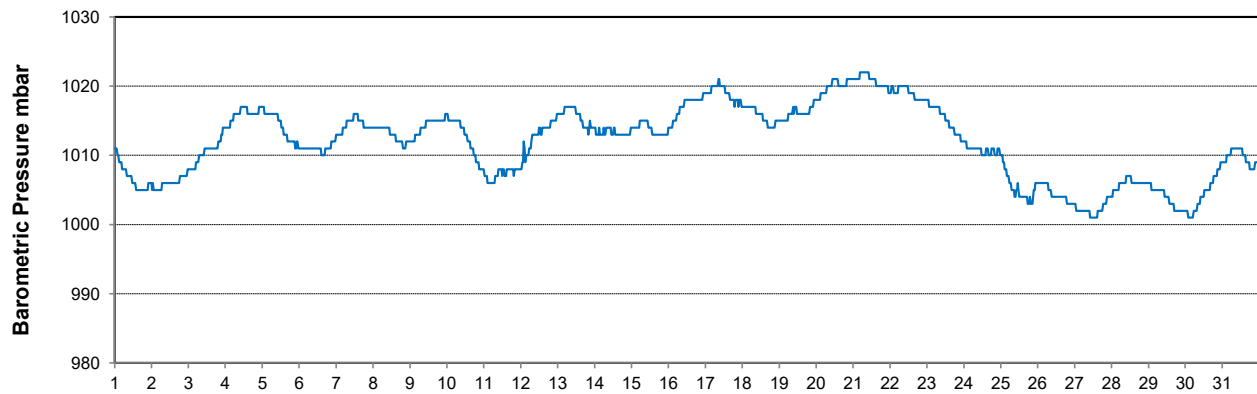
Temperature and Precipitation for July 2024



Relative Humidity for July 2024



Barometric Pressure Corrected to Sea Level for July 2024





SRC CLIMATE REFERENCE STATION DAILY DATA REPORT

SASKATOON STATION 4057180

Saskatchewan 52°09' N 106°36' W 497 m asl Estab. 1963

Preliminary **JULY 2024**

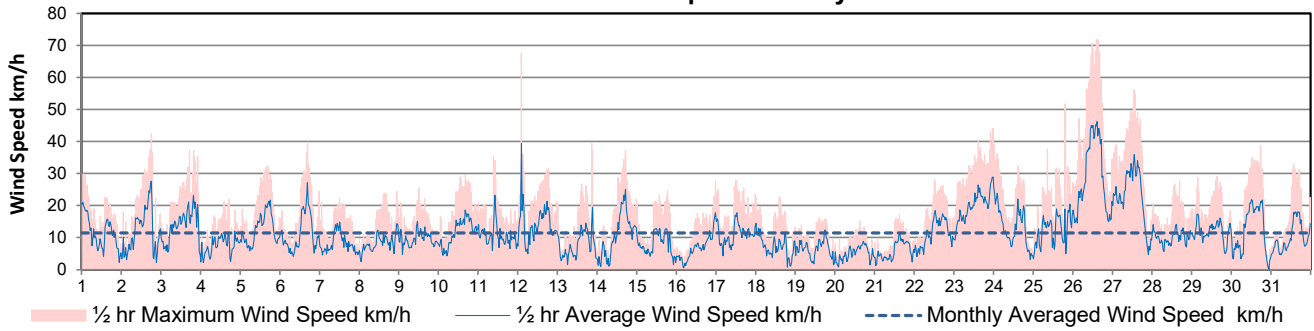
| Day | Wind Gust | | | Wind Speed (10 meters) Daily Average | Soil Temperatures at 0900hrs | | | | | | | | Radiation | | | | |
|---------|-----------|-----------|-------|--|---|------|-------|-------|-------|--------|--------|----------------------------------|------------------|----------|------------|-------------------|-------------------|
| | Max | Direction | Time | | Surface | 5 cm | 10 cm | 20 cm | 50 cm | 100 cm | 150 cm | 300 cm | Bright Sunshine | Possible | % Possible | Global | Diffuse |
| | km/h | | | km/h | °C | °C | °C | °C | °C | °C | °C | °C | hours | hours | | MJ/m ² | MJ/m ² |
| 1 | 29.9 | ESE | 0:34 | 11.6 | 16.5 | 17.0 | 17.0 | 16.5 | 14.5 | 11.5 | 10.0 | 7.5 | 1.8 | 16.7 | 10.8 | 12.7 | 10.0 |
| 2 | 42.4 | NW | 18:02 | 12.0 | 17.0 | 16.5 | 17.0 | 16.5 | 15.0 | 11.5 | 10.0 | 7.5 | 9.1 | 16.6 | 54.7 | 22.9 | 8.1 |
| 3 | 37.4 | NW | 17:12 | 13.7 | 18.0 | 17.0 | 17.5 | 15.5 | 15.5 | 11.5 | 10.0 | 7.5 | 13.1 | 16.6 | 78.8 | 27.6 | 5.5 |
| 4 | 21.9 | N | 17:18 | 7.6 | 19.0 | 18.5 | 19.0 | 18.5 | 16.0 | 12.0 | 10.0 | 7.5 | 9.8 | 16.6 | 59.0 | 19.7 | 10.1 |
| 5 | 32.1 | WNW | 16:31 | 12.5 | 20.0 | 18.5 | 18.5 | 18.5 | 16.5 | 12.0 | 10.0 | 7.5 | 14.6 | 16.6 | 88.1 | 26.2 | 8.7 |
| 6 | 39.9 | WNW | 16:37 | 11.2 | 19.5 | 18.5 | 19.0 | 19.0 | 16.5 | 12.0 | 10.5 | 8.0 | 13.2 | 16.6 | 79.8 | 25.6 | 7.8 |
| 7 | 22.3 | N | 12:29 | 8.1 | 18.5 | 19.0 | 19.0 | 18.5 | 17.0 | 12.5 | 10.5 | 8.0 | 12.4 | 16.5 | 75.1 | 24.7 | 8.7 |
| 8 | 24.4 | WSW | 22:38 | 8.3 | 20.5 | 19.5 | 19.5 | 19.5 | 17.5 | 12.5 | 10.5 | 8.0 | 12.2 | 16.5 | 74.0 | 24.8 | 9.0 |
| 9 | 25.6 | NE | 12:26 | 9.5 | 22.5 | 21.0 | 21.0 | 20.5 | 17.5 | 13.0 | 10.5 | 8.0 | 13.7 | 16.5 | 83.2 | 25.5 | 8.5 |
| 10 | 29.5 | SSE | 16:28 | 11.6 | 22.5 | 21.0 | 21.5 | 21.0 | 18.0 | 13.0 | 11.0 | 8.0 | 14.7 | 16.4 | 89.5 | 27.3 | 6.4 |
| 11 | 35.4 | W | 9:28 | 10.7 | 23.5 | 22.5 | 22.5 | 22.0 | 18.5 | 13.5 | 11.0 | 8.0 | 11.5 | 16.4 | 70.1 | 23.8 | 7.1 |
| 12 | 67.5 | NW | 20:57 | 14.3 | 19.5 | 21.0 | 21.5 | 22.5 | 19.0 | 13.5 | 11.0 | 8.0 | 11.7 | 16.4 | 71.5 | 22.7 | 9.1 |
| 13 | 39.4 | NNW | 2:07 | 7.8 | 17.5 | 19.0 | 20.0 | 21.0 | 19.0 | 14.0 | 11.5 | 8.0 | 11.5 | 16.3 | 70.4 | 23.5 | 7.5 |
| 14 | 37.2 | WNW | 17:07 | 10.8 | 18.0 | 20.0 | 20.5 | 21.0 | 18.5 | 14.0 | 11.5 | 8.5 | 5.0 | 16.3 | 30.7 | 17.9 | 11.3 |
| 15 | 24.7 | NW | 18:31 | 8.0 | 17.0 | 17.5 | 18.5 | 19.5 | 18.5 | 14.0 | 11.5 | 8.5 | 7.1 | 16.3 | 43.7 | 18.2 | 10.6 |
| 16 | 27.7 | SSE | 23:33 | 6.7 | 19.0 | 17.5 | 18.0 | 19.0 | 18.0 | 14.0 | 11.5 | 8.5 | 14.9 | 16.2 | 91.9 | 27.1 | 5.6 |
| 17 | 27.9 | SW | 12:29 | 11.0 | 19.5 | 19.5 | 20.0 | 20.5 | 18.0 | 14.0 | 12.0 | 8.5 | 10.9 | 16.2 | 67.4 | 24.7 | 6.7 |
| 18 | 22.7 | SSW | 14:01 | 7.2 | 23.5 | 20.5 | 21.0 | 21.5 | 18.5 | 14.0 | 12.0 | 8.5 | 14.8 | 16.1 | 91.8 | 25.8 | 6.5 |
| 19 | 16.2 | E | 14:05 | 6.5 | 23.5 | 22.0 | 22.0 | 22.5 | 18.5 | 14.0 | 12.0 | 8.5 | 13.0 | 16.1 | 80.8 | 24.2 | 7.4 |
| 20 | 15.2 | N | 15:11 | 5.1 | 23.0 | 22.5 | 22.5 | 23.0 | 19.0 | 14.5 | 12.0 | 9.0 | 10.2 | 16.1 | 63.6 | 17.3 | 10.4 |
| 21 | 17.3 | NNE | 15:07 | 5.8 | 20.5 | 22.5 | 22.5 | 23.0 | 19.5 | 14.5 | 12.0 | 9.0 | 8.5 | 16.0 | 53.1 | 16.9 | 10.6 |
| 22 | 28.1 | NE | 12:20 | 11.3 | 18.0 | 21.5 | 22.0 | 22.5 | 19.5 | 14.5 | 12.5 | 9.0 | 5.1 | 16.0 | 32.0 | 14.8 | 10.7 |
| 23 | 44.1 | ESE | 23:35 | 19.8 | 17.5 | 20.5 | 21.0 | 21.5 | 19.5 | 15.0 | 12.5 | 9.0 | 2.1 | 15.9 | 13.2 | 11.1 | 9.2 |
| 24 | 39.3 | SE | 0:04 | 13.4 | 22.0 | 21.0 | 21.0 | 21.5 | 19.0 | 15.0 | 12.5 | 9.0 | 13.2 | 15.9 | 83.2 | 23.9 | 7.9 |
| 25 | 51.7 | SSW | 19:10 | 12.4 | 22.0 | 22.0 | 22.0 | 22.5 | 19.0 | 15.0 | 12.5 | 9.0 | 7.6 | 15.8 | 48.1 | 17.5 | 7.9 |
| 26 | 71.9 | WSW | 14:11 | 29.0 | 16.5 | 19.5 | 20.5 | 22.0 | 19.5 | 15.0 | 12.5 | 9.5 | 12.3 | 15.8 | 78.0 | 23.1 | 7.7 |
| 27 | 56.2 | W | 13:13 | 22.8 | 17.0 | 19.0 | 20.0 | 20.5 | 19.0 | 15.0 | 13.0 | 9.5 | 3.6 | 15.7 | 22.9 | 9.0 | 6.5 |
| 28 | 27.6 | W | 16:49 | 10.0 | 16.5 | 17.5 | 18.0 | 19.0 | 18.5 | 15.0 | 13.0 | 9.5 | 11.0 | 15.7 | 70.2 | 21.4 | 9.1 |
| 29 | 29.1 | WSW | 15:15 | 11.9 | 20.0 | 19.0 | 19.5 | 20.5 | 18.0 | 15.0 | 13.0 | 9.5 | 13.3 | 15.6 | 85.2 | 24.1 | 7.0 |
| 30 | 38.8 | NW | 17:42 | 12.1 | 18.5 | 20.0 | 20.5 | 21.5 | 18.5 | 15.0 | 13.0 | 9.5 | 10.9 | 15.6 | 70.1 | 20.8 | 8.0 |
| 31 | 32.9 | S | 13:59 | 10.0 | 22.0 | 19.0 | 20.0 | 21.5 | 18.5 | 15.0 | 13.0 | 9.5 | 14.3 | 15.5 | 92.2 | 24.0 | 5.0 |
| Total | | | | | | | | | | | | | 327.1 | 501.2 | 65.3 | 668.8 | 254.6 |
| Mean | | | | 11.4 | 19.6 | 19.7 | 20.1 | 20.4 | 18.0 | 13.7 | 11.6 | 8.5 | 1991-2020 Normal | | | | |
| Extreme | 71.9 | WSW | 14:11 | | 1971- 2000 Normal for Soil Temperatures | | | | | | | | 305.5 | 501.60 | 60.9 | 662.0 | 203.3 |
| Date | 26 | | | | 17.5 | 18.0 | 18.9 | 16.7 | 13.1 | 10.9 | 7.5 | No. of Bright Sunshine days = 31 | | | | | |

Note: Red numbers indicate manual calculation; Red cell indicate data not available

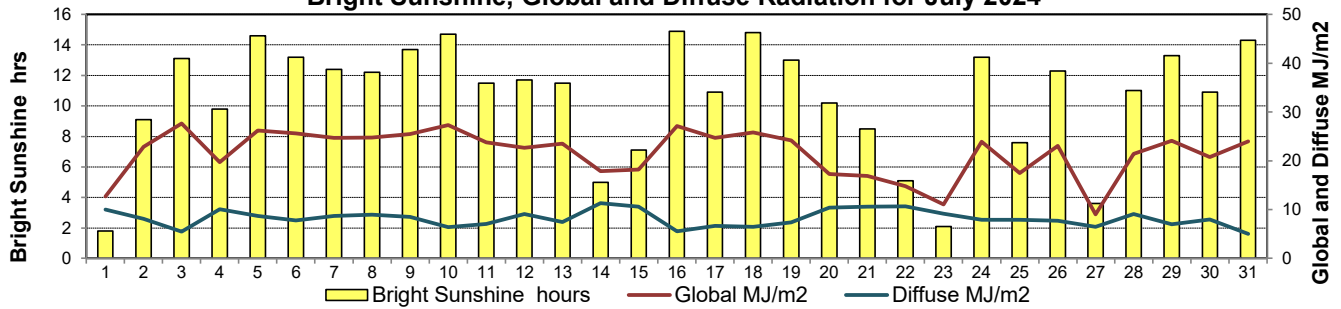
SRC proudly recognizes the following CRS supporters:



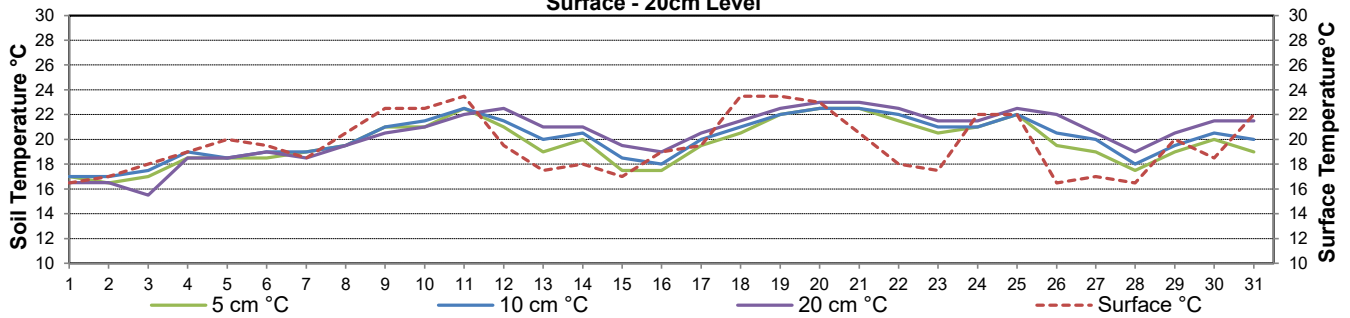
10 meter Tower Wind Speed for July 2024



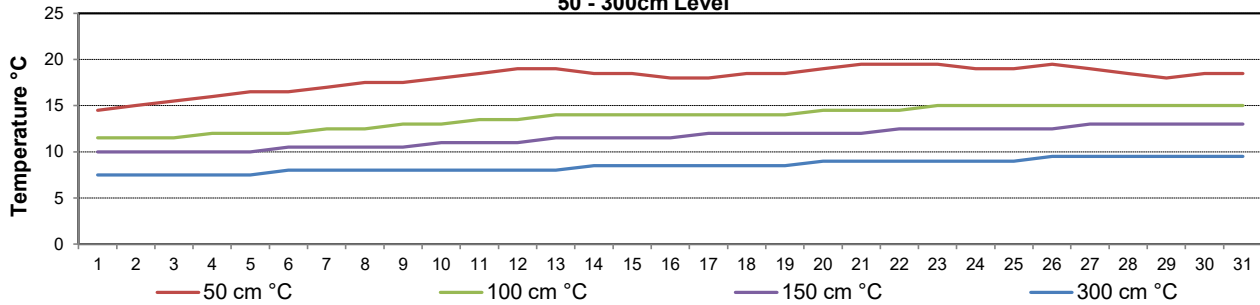
Bright Sunshine, Global and Diffuse Radiation for July 2024



**Soil Temperatures for July 2024
Surface - 20cm Level**



**Soil Temperatures for July 2024
50 - 300cm Level**





SRC CLIMATE REFERENCE STATION DAILY DATA REPORT

SASKATOON STATION 4057180

52°09' N 106°36' W 497 m asl Estab. 1963

Preliminary **JULY 2024**

Extreme Records for July

| Max/Min Temperature °C | | | Precipitation - Monthly mm | | | Wind Monthly km/h | | | CRS Bright Sunshine - Monthly | | | | | | | | |
|------------------------|---------------|------------|----------------------------|-----------------|-------------|-------------------|------|------------|-------------------------------|------------------|---------|--------------|------|-------|------|-------------|-------|
| S'toon Area | Date | Site | S'toon CRS | Date | S'toon Area | Date | Site | S'toon CRS | Date | S'toon Airport | Date | S'toon CRS** | Date | Hours | Year | No. of Days | Year |
| 40.0 | (1919,41)1946 | (SE SA) US | 40.1 | 02/2021 | 162.9 | 1928 | SE | 125.9 | 1971 | 113 ^E | 05/1955 | 160 | 1985 | 386.2 | 1974 | 31 | 1967* |
| -0.6 | 25/1918 | SE | 1.7 | 02/1967,09/1978 | 0.0 | 1988 | SC | 5.0 | 2021 | | | | | 185.5 | 1998 | 27 | 2004 |

**1975 forward * more than one year

| Notable Events for CRS Saskatoon - July | | | | | | Saskatoon Area Stations | | | Glossary | | |
|---|-------------------------|-----|------------|------------|------------|-------------------------|-----------------------|------------------------------|--------------------|---|--------------------------------------|
| Element | Type | Day | New Record | Old Record | Day / Year | SM | NWMP | c. 1892-1901 | T | Trace of precipitation | |
| Temperature | Highest | 11 | 32.3 | 32.2 | 1964 | SE | Eby | 1901-1941 | Normal | 30 year average beginning with the decade | |
| | | 19 | 33.5 | 33.3 | 1979 | US | Univ. of Sask. | 1915-1964 | SOG | Depth of snow-on-the-ground in cm | |
| | Maximum Daily | 25 | 34.3 | 33.8 | 2002 | S | Saskatoon | 1941-1942 | na | not available | |
| | | 11 | 21.0 | 19.4 | 1970 | SA | Saskatoon A | 1942 - | Degree-days | | |
| | Highest Minimum Daily | 19 | 19.1 | 18.0 | 2002 | NRC | Nat. Res. Council | 1952-1966 | Tm | Mean Temperature | |
| | | 20 | 19.1 | 17.8 | 1966 | SRC | Sask. Res. Council | 1963- | Growing | (Tm-5°C); if Tm ≤ 5°C then GDD = 0 | |
| | Average Minimum Monthly | | | 15.1 | 15.0 | 2007, 2012, 2021 | SWT | S'toon Water Treatment Plant | 1974 - | Heating | (18°C-Tm); if Tm ≤ 18°C then HDD = 0 |
| | | | 11 | 26.7 | 25.0 | 2021 | SC | S'toon Central Ave | 1974-1989 | Cooling | (Tm-18°C); if Tm ≥ 18°C then CDD = 0 |
| | Highest Mean Daily | | 19 | 26.3 | 25.3 | 1974 | S1 | Saskatoon 1 | 1976-1978 | Extreme Cooling | (Tm-24°C); if Tm ≥ 24°C then CDD = 0 |
| | | | 20 | 25.3 | 24.7 | 1979 | S2 | Saskatoon 2 | 1977-1990 | | |
| 27 | | | 16.9 | 16.8 | 11/2016 | K | S'toon Kernen Farm | 1993-2004 | | | |
| Highest Lowest Mean Monthly Temperature | | | | | | KCS | S'toon Kernen Farm CS | 1996- | | | |
| | | | | | | RCS | Environment Canada | 2008- | | | |
| Growing Degree-days | Highest Daily | 11 | 21.7 | 20 | 2021 | SF | Sutherland Forest | 1943-1970 | | | |
| | | 20 | 20.3 | 19.7 | 1979 | | | | | | |
| Heating Degree-days | Lowest Monthly | | 2.3 | 2.7 | 2006 | | | | | | |
| Cooling Degree-days 18°C | Highest Daily | 11 | 8.7 | 7.0 | 2021 | | | | | | |
| | | 19 | 8.3 | 7.3 | 1974 | | | | | | |
| | | 20 | 7.3 | 6.7 | 1979 | | | | | | |

SRC proudly recognizes the following CRS supporters:



Agriculture and Agri-Food Canada / Agriculture et Agroalimentaire Canada



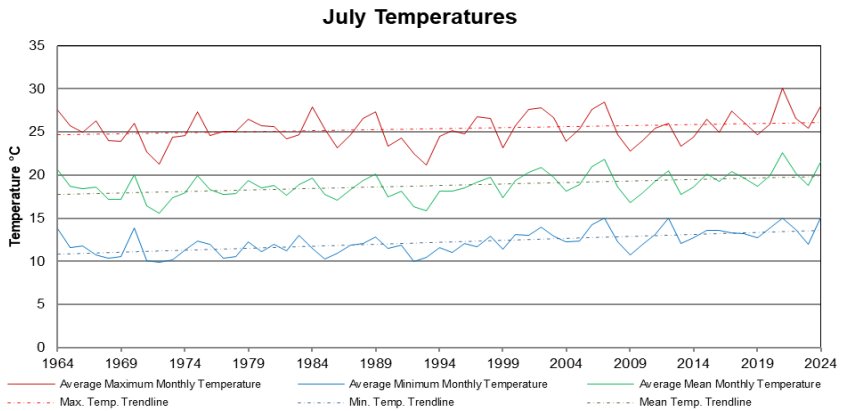


SRC CLIMATE REFERENCE STATION DAILY DATA REPORT
SASKATOON STATION 4057180

52°09' N 106°36' W 497 m asl Estab. 1963

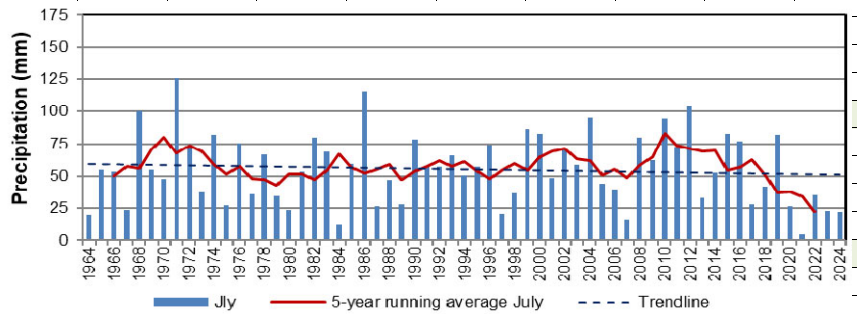
Preliminary July 2024

| Day | 2 meter Wind Speed | | | Soil Moisture at 0900 hrs (rounded to the 0.5%) | | |
|---------|--------------------|--------------|------------------|--|-------|-------|
| | Daily Average | Max ½ hr Avg | ½ hr Extreme Max | 10 cm | 20 cm | 50 cm |
| | km/h | km/h | km/h | % by volume (soil type is Loam (45.5% Sand, 41.1% Silt, 13.3% Clay)) | | |
| 1 | 6.0 | 15.5 | 23.5 | 18.5 | 21.0 | 10.0 |
| 2 | 8.0 | 19.9 | 31.6 | 17.5 | 20.5 | 10.0 |
| 3 | 9.0 | 16.1 | 28.7 | 16.5 | 20.0 | 10.0 |
| 4 | 4.0 | 8.9 | 16.0 | 15.0 | 19.5 | 10.0 |
| 5 | 8.0 | 15.2 | 27.0 | 14.0 | 19.0 | 10.5 |
| 6 | 6.0 | 18.7 | 29.8 | 13.0 | 18.5 | 10.5 |
| 7 | 5.0 | 10.8 | 19.5 | 11.5 | 18.0 | 11.0 |
| 8 | 4.0 | 10.0 | 21.2 | 10.5 | 17.0 | 10.5 |
| 9 | 6.0 | 11.2 | 21.8 | 10.0 | 16.0 | 11.0 |
| 10 | 7.0 | 11.3 | 26.4 | 9.0 | 15.0 | 11.0 |
| 11 | 7.0 | 16.4 | 26.4 | 8.5 | 13.5 | 11.0 |
| 12 | 9.0 | 26.8 | 47.1 | 20.5 | 13.0 | 11.0 |
| 13 | 3.0 | 13.2 | 35.6 | 16.0 | 12.0 | 11.0 |
| 14 | 6.0 | 16.6 | 27.0 | 15.0 | 12.0 | 11.5 |
| 15 | 3.0 | 9.7 | 20.0 | 13.5 | 12.0 | 10.5 |
| 16 | 4.0 | 11.5 | 19.5 | 12.5 | 11.5 | 11.0 |
| 17 | 6.0 | 13.8 | 21.2 | 11.0 | 11.5 | 11.0 |
| 18 | 2.0 | 8.4 | 17.7 | 9.0 | 11.0 | 11.0 |
| 19 | 1.0 | 5.7 | 13.1 | 7.5 | 10.5 | 10.5 |
| 20 | 2.0 | 6.0 | 11.4 | 7.0 | 11.0 | 11.0 |
| 21 | 3.0 | 8.5 | 13.7 | 6.5 | 10.5 | 11.0 |
| 22 | 7.0 | 12.6 | 21.2 | 6.0 | 10.5 | 11.0 |
| 23 | 14.0 | 20.5 | 36.2 | 5.5 | 10.0 | 11.5 |
| 24 | 9.0 | 17.3 | 31.6 | 5.5 | 10.0 | 11.0 |
| 25 | 8.0 | 14.1 | 34.4 | 4.5 | 10.0 | 11.0 |
| 26 | 19.0 | 31.1 | 52.9 | 3.5 | 10.0 | 11.5 |
| 27 | 14.0 | 23.4 | 36.8 | 4.0 | 9.5 | 10.5 |
| 28 | 3.0 | 9.4 | 21.8 | 3.5 | 9.5 | 11.0 |
| 29 | 7.0 | 11.8 | 31.0 | 3.5 | 9.5 | 10.5 |
| 30 | 8.0 | 15.8 | 30.4 | 3.0 | 9.5 | 11.0 |
| 31 | 4.0 | 26.0 | 26.0 | 2.5 | 9.5 | 11.0 |
| Total | | | | | | |
| Mean | | | | 10 | 13 | 10.8 |
| Extreme | 19.0 | 31.1 | 52.9 | 20.5 | 21 | 11.5 |
| Date | 26 | 26 | 26 | 12 | 1 | 14 |



- 3rd highest monthly maximum temperature
 - **highest** monthly minimum temperature at 15.1C. Previous record 15.0C (2007, 2012, 2021)
 - 3rd highest average mean monthly temperature

July Precipitation



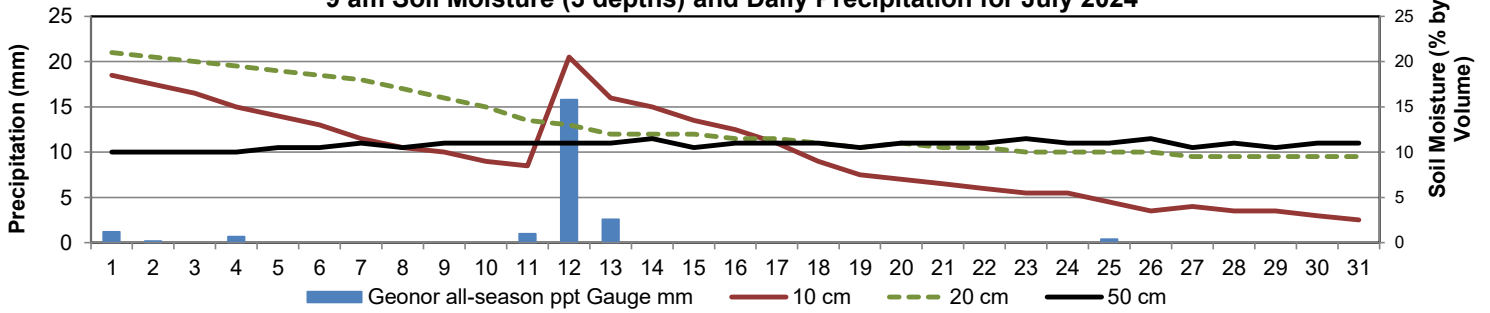
- 6th driest July

Note: Red numbers indicate manual calculation; Red cell indicate data not available

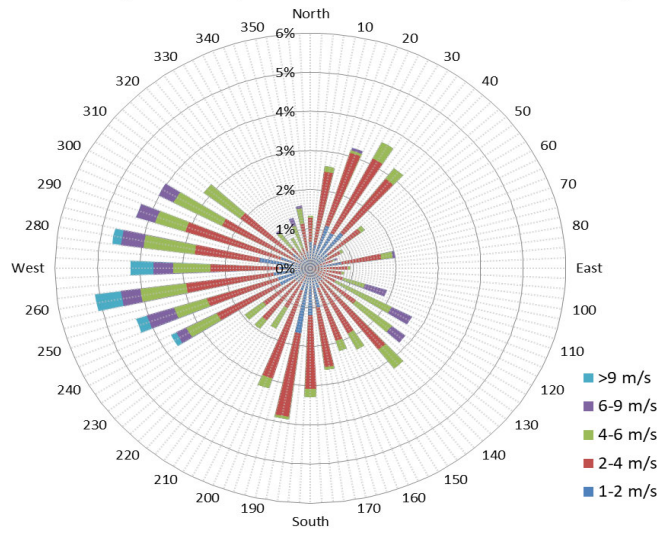
SRC proudly recognizes the following CRS supporters:



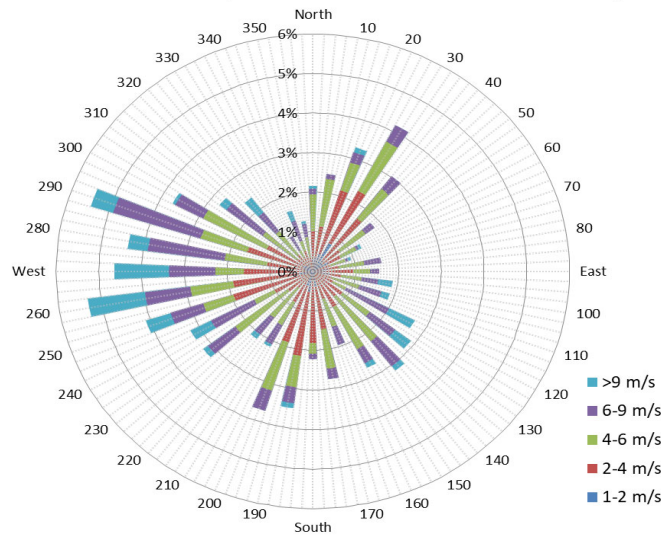
9 am Soil Moisture (3 depths) and Daily Precipitation for July 2024



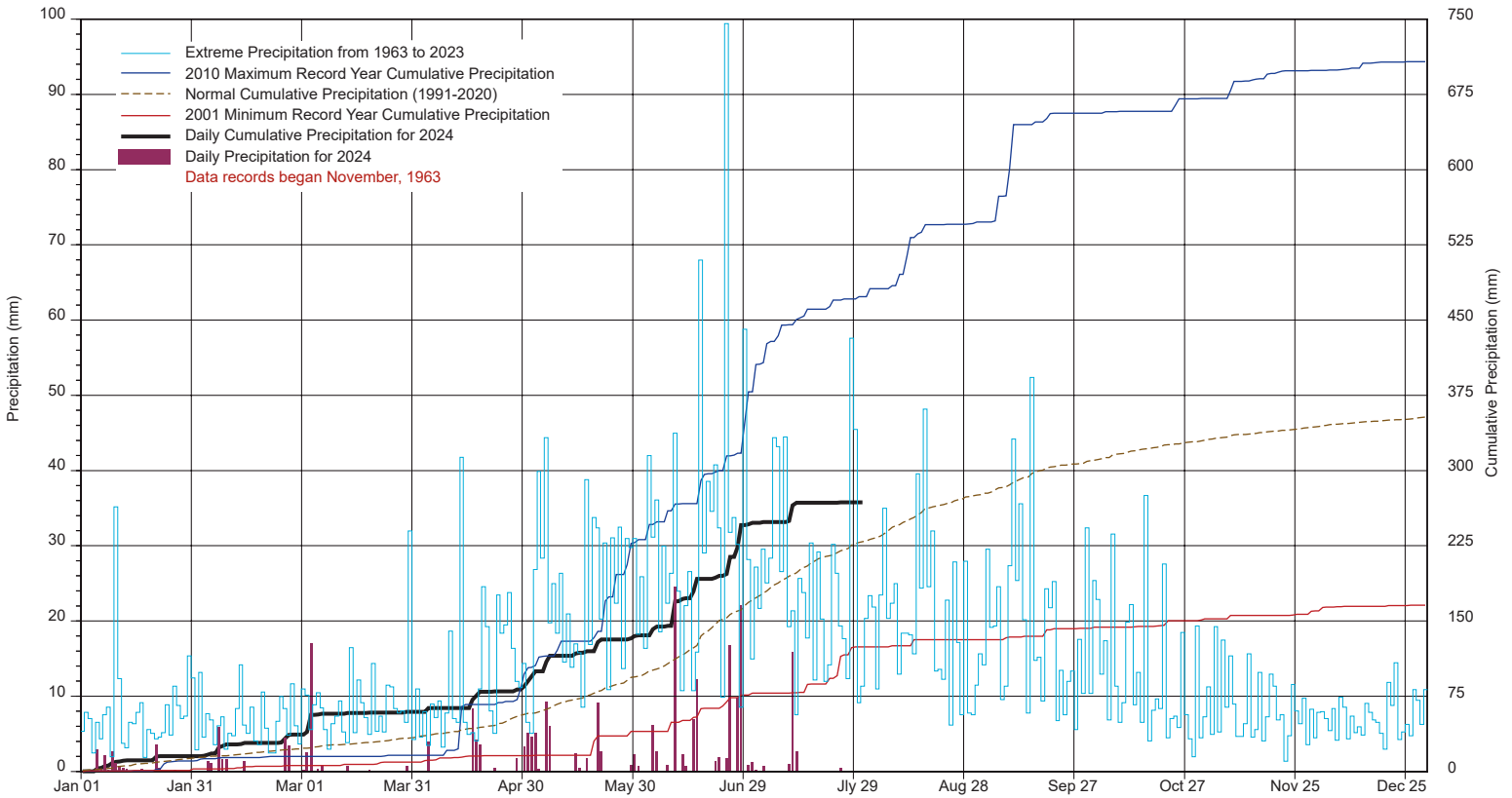
10 minute Average Wind Speed and Direction Saskatoon July 2024



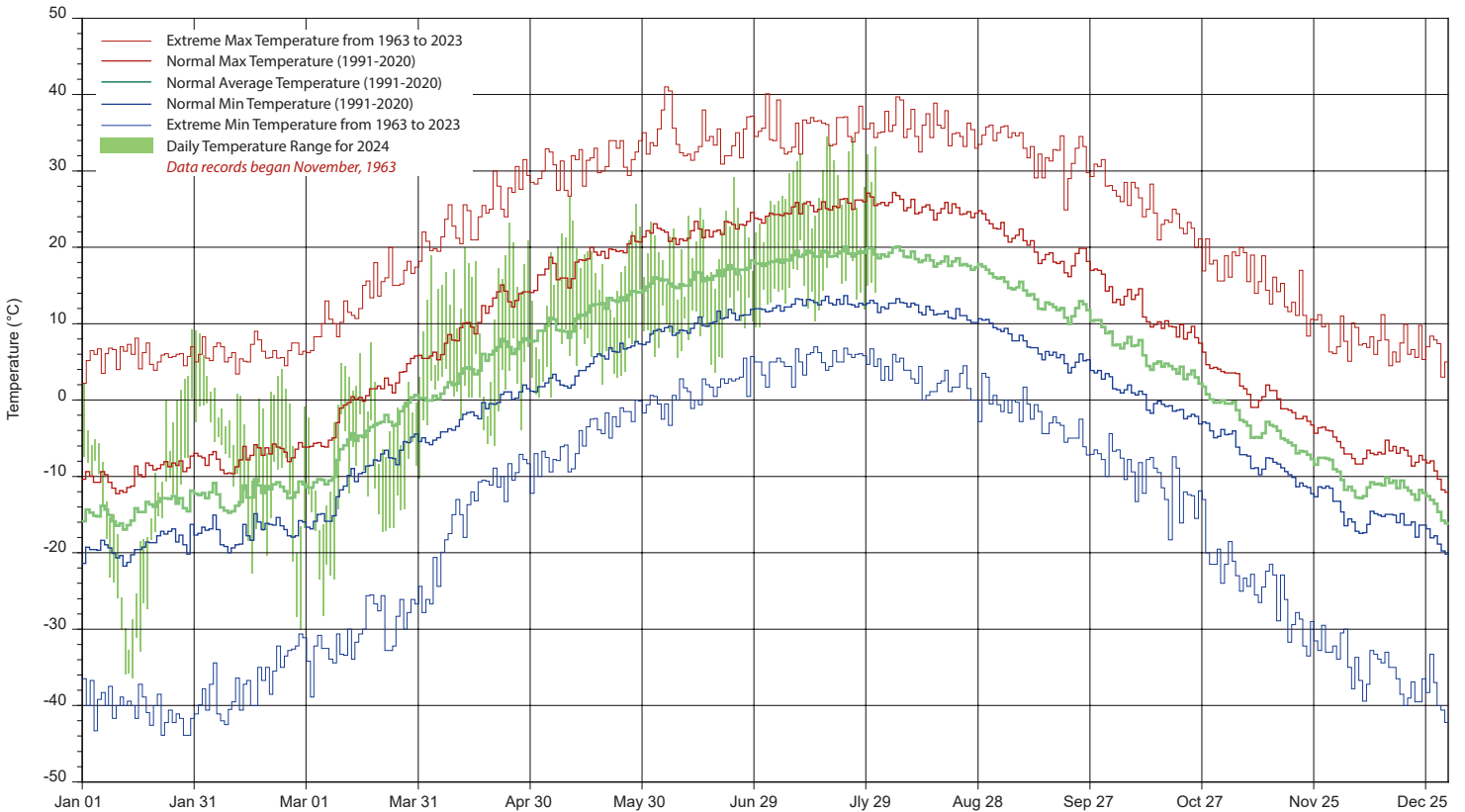
1/2 hr Maximum Wind Speed and Direction Saskatoon July 2024



SASKATCHEWAN RESEARCH COUNCIL SASKATOON CLIMATE REFERENCE STATION 2024 PRECIPITATION AND NORMALS



2024 TEMPERATURES AND NORMALS



SRC proudly recognizes the following CRS supporters:

