



# SRC CLIMATE REFERENCE STATION DAILY DATA REPORT

## SASKATOON STATION 4057180

Saskatchewan 52°09' N 106°36' W 497 m asl Estab. 1963

Preliminary **JUNE 2018**

Day	Temperature						Degree-days			Precipitation			Relative Humidity		Station Pressure (sea level)	
	Max	Normal Max	Min	Normal Min	Mean	Normal Mean	Growing	Heating	Cooling	Weighing Gauge	Tipping Bucket	Notes	Max ½ hr Avg	Min ½ hr Avg	Max ½ hr Avg	Min ½ hr Avg
	°C	1981-2010	°C	1981-2010	°C	1981-2010	5°C base	18°C base	18°C base	mm	mm		%	%	mbar	mbar
1	12.0	21.3	7.4	8.2	9.7	14.8	4.7	8.3	0.0	9.8	8.6	light rain	95	84	1014	1009
2	16.7	21.7	6.9	8.2	11.8	15.0	6.8	6.2	0.0	0.0	0.0		94	54	1016	1011
3	23.1	21.7	7.4	8.3	15.3	15.0	10.3	2.7	0.0	0.0	0.0		88	24	1017	1013
4	25.8	22.4	11.0	8.6	18.4	15.5	13.4	0.0	0.4	2.7	3.0	showers	88	40	1013	1002
5	21.1	23.0	10.2	9.2	15.7	16.1	10.7	2.3	0.0	0.3	0.4	showers	91	27	1012	1003
6	27.1	20.9	7.9	9.5	17.5	15.2	12.5	0.5	0.0	0.0	0.0		87	16	1012	1008
7	26.7	20.3	7.0	8.4	16.9	14.3	11.9	1.1	0.0	0.0	0.0		90	22	1015	1012
8	24.6	20.2	15.4	8.0	20.0	14.1	15.0	0.0	2.0	0.0	0.0		76	48	1013	1012
9	30.0	21.3	14.8	8.7	22.4	15.0	17.4	0.0	4.4	0.0	0.0		83	35	1013	1002
10	26.7	22.0	14.7	9.1	20.7	15.5	15.7	0.0	2.7	2.5	2.8	t-storm	85	30	1004	996
11	16.8	22.1	8.5	9.0	12.7	15.6	7.7	5.3	0.0	1.0	0.8	showers	80	41	1005	1001
12	19.5	21.3	8.9	9.1	14.2	15.2	9.2	3.8	0.0	0.0	0.2	showers	79	34	1008	1004
13	25.7	22.6	8.7	8.7	17.2	15.6	12.2	0.8	0.0	0.0	0.0		77	18	1008	1003
14	23.6	23.0	10.8	10.0	17.2	16.5	12.2	0.8	0.0	0.6	0.6	showers	81	36	1005	1003
15	23.7	23.1	11.2	9.3	17.5	16.2	12.5	0.5	0.0	0.0	0.0		90	32	1012	1004
16	22.1	23.5	6.8	10.0	14.5	16.7	9.5	3.5	0.0	0.0	0.0		87	30	1016	1012
17	25.7	22.8	8.9	10.7	17.3	16.7	12.3	0.7	0.0	0.0	0.0		78	26	1019	1014
18	28.3	23.3	11.4	10.4	19.9	16.8	14.9	0.0	1.9	0.0	0.0		74	20	1021	1019
19	29.3	23.7	11.3	11.3	20.3	17.5	15.3	0.0	2.3	0.0	0.0		71	19	1020	1017
20	30.9	22.7	15.4	10.3	23.2	16.5	18.2	0.0	5.2	0.0	0.0		65	22	1018	1014
21	30.9	23.8	14.5	10.5	22.7	17.2	17.7	0.0	4.7	0.0	0.0		65	21	1014	1010
22	30.7	23.3	16.4	11.5	23.6	17.4	18.6	0.0	5.6	1.0	1.2	t-storm	81	28	1009	1005
23	25.7	23.1	14.2	10.8	20.0	17.0	15.0	0.0	2.0	0.0	0.2		93	53	1012	1006
24	26.0	22.1	16.9	9.9	21.5	16.0	16.5	0.0	3.5	0.5	0.4	t-storm	93	52	1015	1012
25	30.3	22.1	16.5	10.1	23.4	16.1	18.4	0.0	5.4	0.0	0.0		87	34	1013	1004
26	25.8	22.8	13.9	10.3	19.9	16.6	14.9	0.0	1.9	0.0	0.0		68	19	1008	1001
27	25.7	23.5	9.7	10.5	17.7	17.0	12.7	0.3	0.0	1.3	1.8	t-storm	84	18	1009	1005
28	24.4	24.4	10.7	11.2	17.6	17.8	12.6	0.4	0.0	0.0	0.0		72	29	1008	1006
29	25.3	23.8	9.5	11.5	17.4	17.7	12.4	0.6	0.0	0.0	0.0		90	28	1011	1007
30	26.0	24.1	10.9	11.6	18.5	17.9	13.5	0.0	0.5	0.0	0.0		83	29	1012	1006
Total							394.7	37.8	42.5	19.7	20.0		Extreme / Date	Extreme / Date	Extreme / Date	Extreme / Date
Avg	25.0	22.5	11.3	9.8	18.2	16.2	1981-2010 Normal			66.6	Normal					
Extreme Date	30.9		6.8				334.8	81.4	24.8	86.4	Cumulative		95	16	1021	996
Date	20		16							167.5	Cumulative Normal		1	6	18	10

Note: Red numbers indicate manual calculation; Red cell indicate data not available

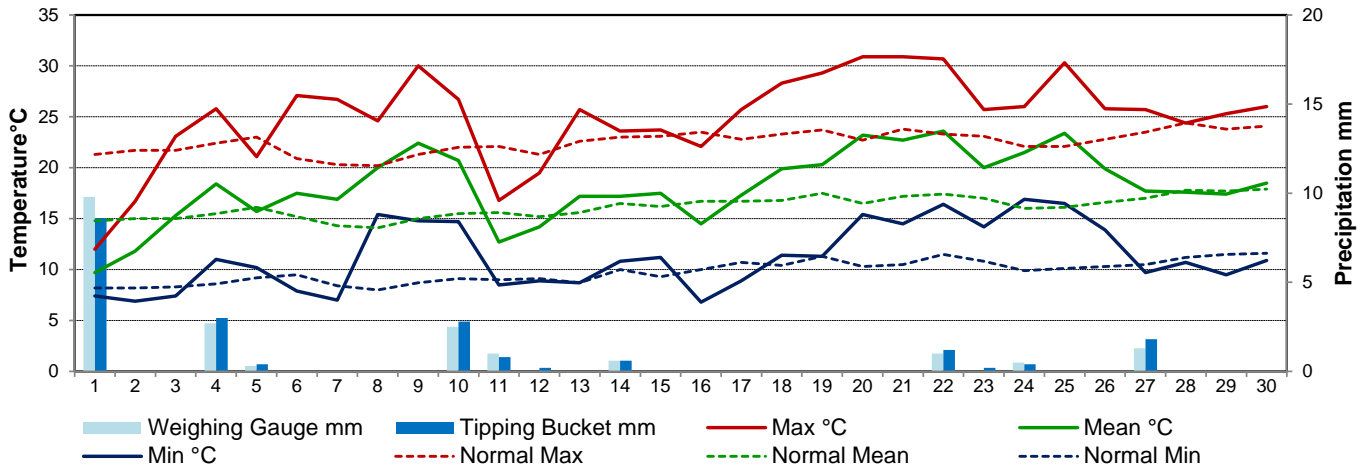
**SRC proudly recognizes the following CRS supporters:**



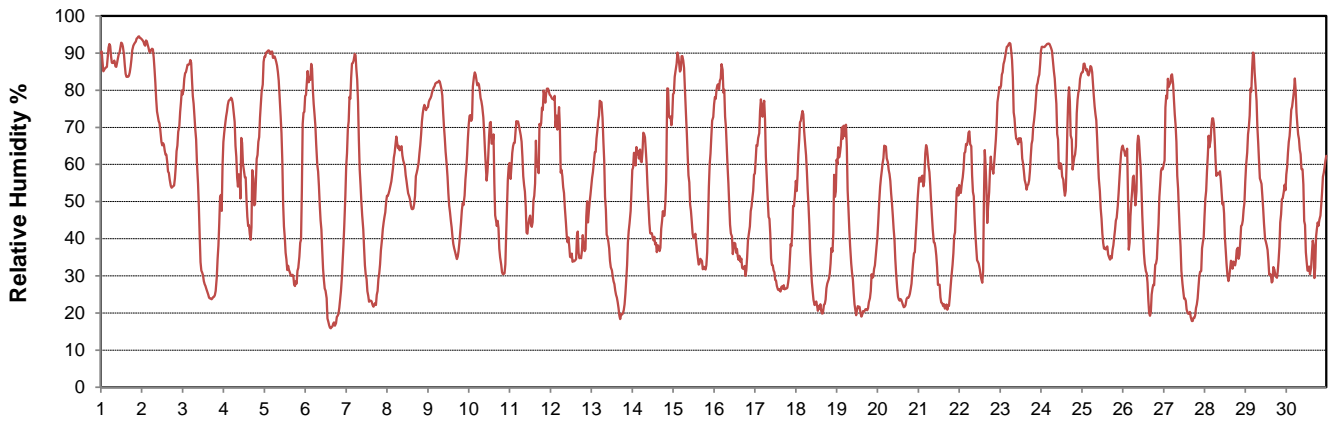
Agriculture and Agri-Food Canada / Agriculture et Agroalimentaire Canada



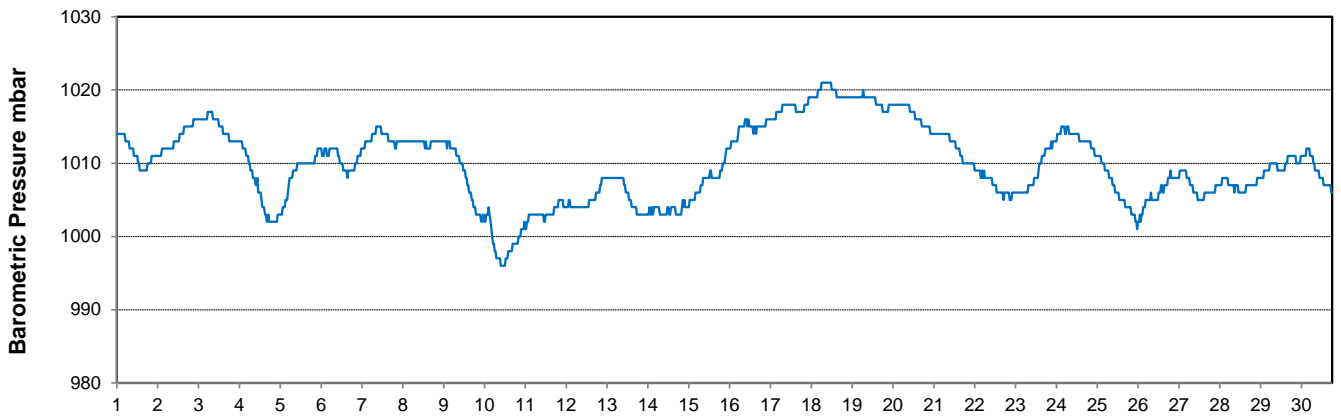
### Temperature and Precipitation for June 2018



### Relative Humidity for June 2018



### Barometric Pressure Corrected to Sea Level for June 2018





# SRC CLIMATE REFERENCE STATION DAILY DATA REPORT

**SASKATOON STATION 4057180**

Saskatchewan 52°09' N 106°36' W 497 m asl Estab. 1963

Preliminary **JUNE 2018**

Day	Wind Gust			Soil Temperatures at 0900hrs								Soil Moisture 30 cm	Radiation				
	Max	Direction	Time	Surface	5 cm	10 cm	20 cm	50 cm	100 cm	150 cm	300 cm		0900hrs	Bright Sunshine	Possible	% Possible	Global
	km/h			°C	°C	°C	°C	°C	°C	°C	°C	%	hours	hours		MJ/m <sup>2</sup>	MJ/m <sup>2</sup>
1	45.9	E	14:20	8.5	12.0	13.0	13.0	13.0	9.0	7.0	4.5	12	0.0	16.4	0.0	3.3	2.5
2	46.8	NW	9:15	8.5	10.5	11.5	11.5	12.0	9.0	7.0	4.5	14	5.1	16.5	31.0	15.0	8.1
3	45.5	NW	14:12	15.0	11.0	11.0	11.5	11.5	9.0	7.0	4.5	14	15.5	16.5	94.0	28.9	3.2
4	50.6	SE	16:14	14.5	13.5	14.0	13.5	12.0	9.0	7.5	4.5	13	6.4	16.5	38.7	17.5	7.9
5	43.7	NNW	11:19	12.5	14.0	14.5	14.0	12.0	9.0	7.5	5.0	14	9.5	16.6	57.4	25.7	5.6
6	46.2	WSW	13:41	16.5	14.0	14.5	14.5	13.0	9.0	7.5	5.0	13	15.3	16.6	92.3	28.9	4.8
7	39.8	E	16:08	18.5	14.5	15.0	15.5	13.0	9.0	7.5	5.0	13	12.9	16.6	77.7	28.0	5.2
8	38.3	ENE	17:09	19.5	17.0	17.5	16.5	13.5	9.5	7.5	5.0	13	13.8	16.6	83.0	27.7	4.4
9	52.3	ESE	18:26	17.5	18.0	18.5	17.5	14.5	9.5	7.5	5.0	13	11.2	16.6	67.3	27.2	4.1
10	65.6	WNW	2:36	22.0	19.5	20.0	19.0	15.0	9.5	8.0	5.5	13	9.0	16.7	54.0	18.0	7.1
11	62.1	W	17:05	14.5	15.0	16.5	17.0	15.5	10.0	8.0	5.5	13	7.5	16.7	45.0	19.6	6.5
12	63.7	W	15:41	14.0	13.5	14.5	15.0	14.5	10.5	8.0	5.5	13	5.7	16.7	34.2	15.4	8.6
13	37.4	SE	12:52	16.5	13.5	14.0	14.0	14.0	10.5	8.5	5.5	12	11.5	16.7	68.8	27.8	4.3
14	47.2	W	20:12	17.5	15.5	16.0	16.0	14.0	10.5	8.5	5.5	12	6.6	16.7	39.5	17.9	7.6
15	40.7	W	14:47	17.0	16.0	16.0	16.0	14.5	10.5	8.5	5.5	12	12.6	16.7	75.3	27.4	4.2
16	32.3	NNE	14:19	17.0	15.0	16.0	16.5	14.5	10.5	8.5	6.0	12	12.4	16.7	74.1	24.0	7.4
17	25.8	NNW	12:17	19.5	15.5	16.0	16.5	14.5	10.5	8.5	6.0	12	14.8	16.8	88.4	27.7	4.0
18	23.9	NNW	12:05	22.0	17.0	17.5	17.5	15.0	10.5	9.0	6.0	12	11.1	16.8	66.3	24.2	6.3
19	25.9	NNE	16:24	23.5	17.5	18.0	18.0	15.5	11.0	9.0	6.0	12	13.8	16.8	82.3	27.0	4.9
20	29.6	W	16:31	22.5	19.0	19.5	19.0	16.0	11.0	9.0	6.0	12	13.9	16.8	82.9	27.8	4.3
21	37.5	SSW	14:29	23.5	19.5	20.0	19.5	16.5	11.0	9.0	6.0	12	12.8	16.8	76.4	24.2	8.3
22	54.5	E	17:47	23.5	20.5	21.0	20.5	17.0	11.5	9.0	6.5	12	9.4	16.8	56.1	21.3	5.6
23	40.1	NE	17:58	21.5	19.5	20.0	20.0	17.5	11.5	9.5	6.5	12	9.3	16.8	55.5	22.3	9.0
24	34.4	S	15:22	20.5	20.5	21.0	20.0	17.5	12.0	9.5	6.5	12	6.5	16.8	38.8	16.4	7.7
25	43.7	SSE	14:59	23.0	19.5	20.0	19.5	16.5	12.0	9.5	6.5	12	14.3	16.7	85.4	27.1	4.8
26	49.5	SW	3:48	20.0	21.5	22.0	21.0	17.0	12.0	10.0	6.5	12	12.7	16.7	75.9	27.5	4.8
27	49.5	SW	14:10	17.0	18.5	19.5	20.0	17.0	12.0	10.0	6.5	12	13.5	16.7	80.7	26.6	4.8
28	27.4	WNW	14:39	15.5	17.0	18.0	19.0	17.0	12.0	10.0	7.0	12	9.1	16.7	54.5	17.8	9.7
29	26.7	NW	17:52	19.0	17.0	17.5	18.5	16.5	12.5	10.5	7.0	12	12.3	16.7	73.7	24.5	7.1
30	39.0	W	14:53	18.0	18.5	19.0	19.0	16.5	12.5	10.5	7.0	12	8.4	16.7	50.4	20.4	7.3
Total													316.9	500.1	63.4	687.1	180.1
Mean				18.0	16.5	17.1	17.0	14.9	10.5	8.6	5.7	13	1981-2010 Normal for Radiation				
Extreme	65.6	WNW	2:36	1971- 2000 Normal for Soil Temperatures									258.2	500.1	51.6	625.7	227.9
Date	10			15.3	15.7	16.3	14.0	10.4	8.3	5.4		No. of Bright Sunshine days = 29					

Note: Red numbers indicate manual calculation; Red cell indicate data not available

**SRC proudly recognizes the following CRS supporters:**



Agriculture and Agri-Food Canada

Agriculture et Agroalimentaire Canada

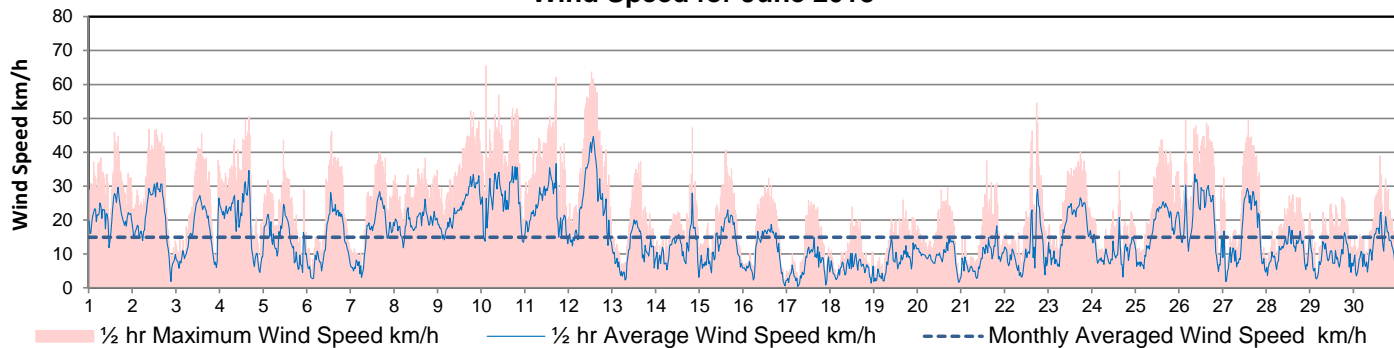


UNIVERSITY OF SASKATCHEWAN

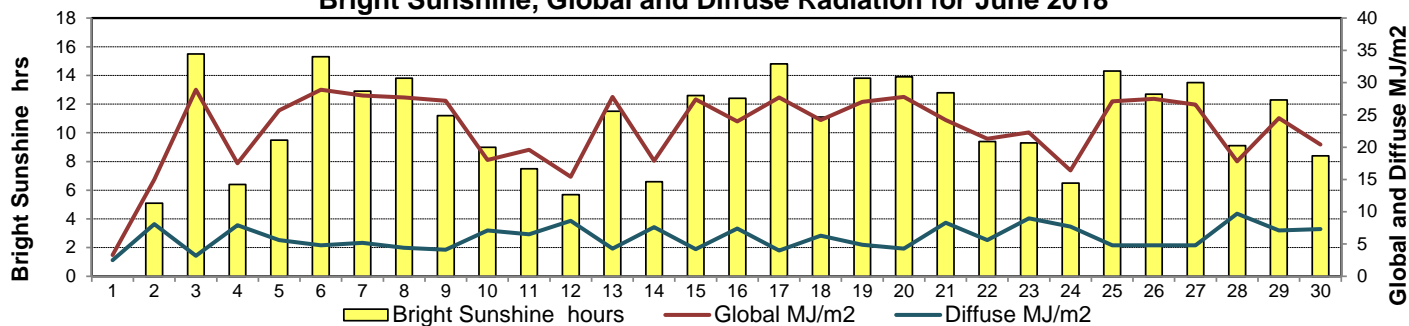


CAMPBELL SCIENTIFIC WHEN MEASUREMENTS MATTER

### Wind Speed for June 2018

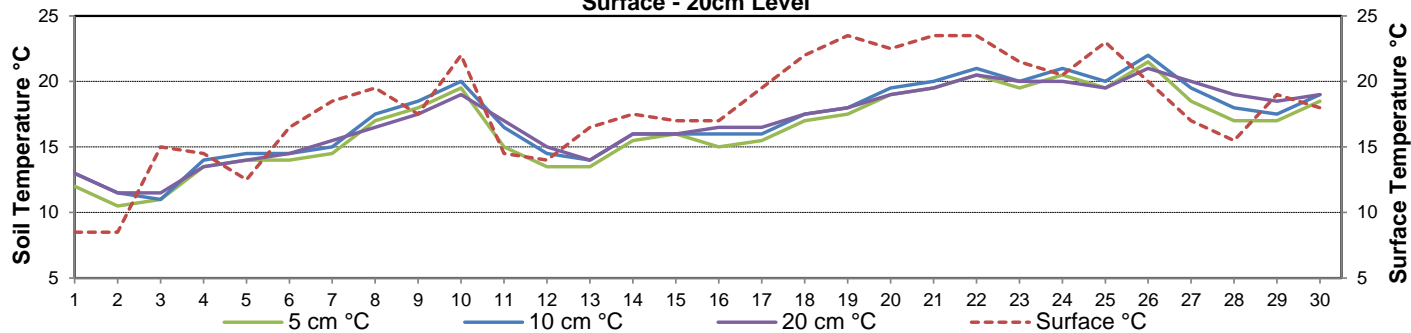


### Bright Sunshine, Global and Diffuse Radiation for June 2018



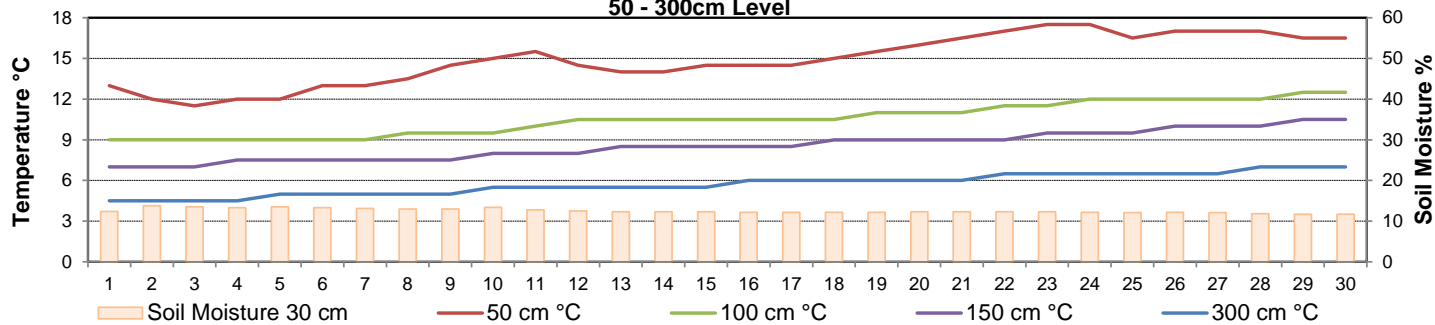
### Soil Temperatures for June 2018

Surface - 20cm Level



### Soil Temperatures for June 2018

50 - 300cm Level





# SRC CLIMATE REFERENCE STATION DAILY DATA REPORT

## SASKATOON STATION 4057180

52°09' N 106°36' W 497 m asl Estab. 1963

Preliminary **JUNE 2018**

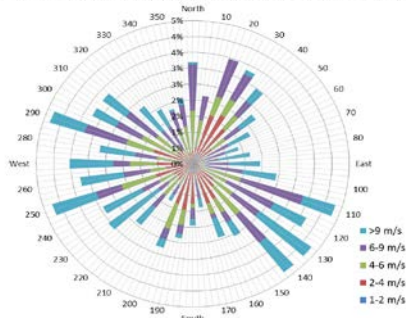
### Extreme Records for June

Max/Min Temperature °C				Precipitation - Monthly mm				Wind Monthly km/h				CRS Bright Sunshine - Monthly			
S'toon Area	Date	Site	S'toon CRS Date	S'toon Area	Date	Site	S'toon CRS Date	S'toon Airport	Date	S'toon CRS**	Date	Hours	Year	No. of Days	Year
41.5	06/1988	S2	41.0 05/1988	186.8	1942	S	171.0 2005	117	01 <sup>S</sup> 1986	109.7 <sup>SW</sup>	22/2005	370.6	1978	30	1969*
-3.9	02/1917	US	-3.3 06/1967	5.0	2003	KCS	13.0 1985					175.3	2005	25	2002, 05

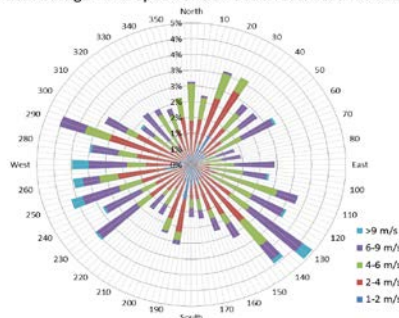
\*\*1975 forward \* more than one year

Notable Events for CRS Saskatoon - June						Saskatoon Area Stations		Glossary	
Element	Type	Day	New Record	Old Record	Year	Station	Operational Period	Code	Description
Temperature	Lowest Maximum Daily	1	12	12.0	1984	SM	NWMP c. 1892-1901	T	Trace of precipitation
	Highest Maximum Daily	20	30.9	30.5	1988	SE	Eby 1901-1941	Normal	30 year average beginning with the decade
	Highest Minimum Daily	10	14.7	14.5	1987	US	Univ. of Sask. 1915-1964	SOG	Depth of snow-on-the-ground in cm
	Highest Minimum Daily	25	16.5	15.6	1975	S	Saskatoon 1941-1942	na	not available
	Highest Average Daily	20	23.2	21.9	2009	SA	Saskatoon A 1942 -	<b>Degree-days</b>	
	Highest Average Daily	25	23.4	22.5	2012	NRC	Nat. Res. Council 1952-1966	Tm	Mean Temperature
					SRC	Sask. Res. Council 1963-	Growing	(Tm-5°C); if Tm ≤ 5°C then GDD = 0	
					SWT	S'toon Water Treatment Plant 1974 -	Heating	(18°C-Tm); if Tm ≤ 18°C then HDD = 0	
					SC	S'toon Central Ave 1974-1989	Cooling	(Tm-18°C); if Tm ≥ 18°C then CDD = 0	
					S1	Saskatoon 1 1976-1978	Extreme Cooling	(Tm-24°C); if Tm ≥ 24°C then CDD = 0	
					S2	Saskatoon 2 1977-1990	datalogger program update 7 June 2018		
					K	S'toon Kernen Farm 1993-2004			
					KCS	S'toon Kernen Farm CS 1996-			
					RCS	Environment Canada 2008-			
					SF	Sutherland Forestry 1943-1970			

1/2 hr Maximum Wind Speed and Direction Saskatoon June 2018



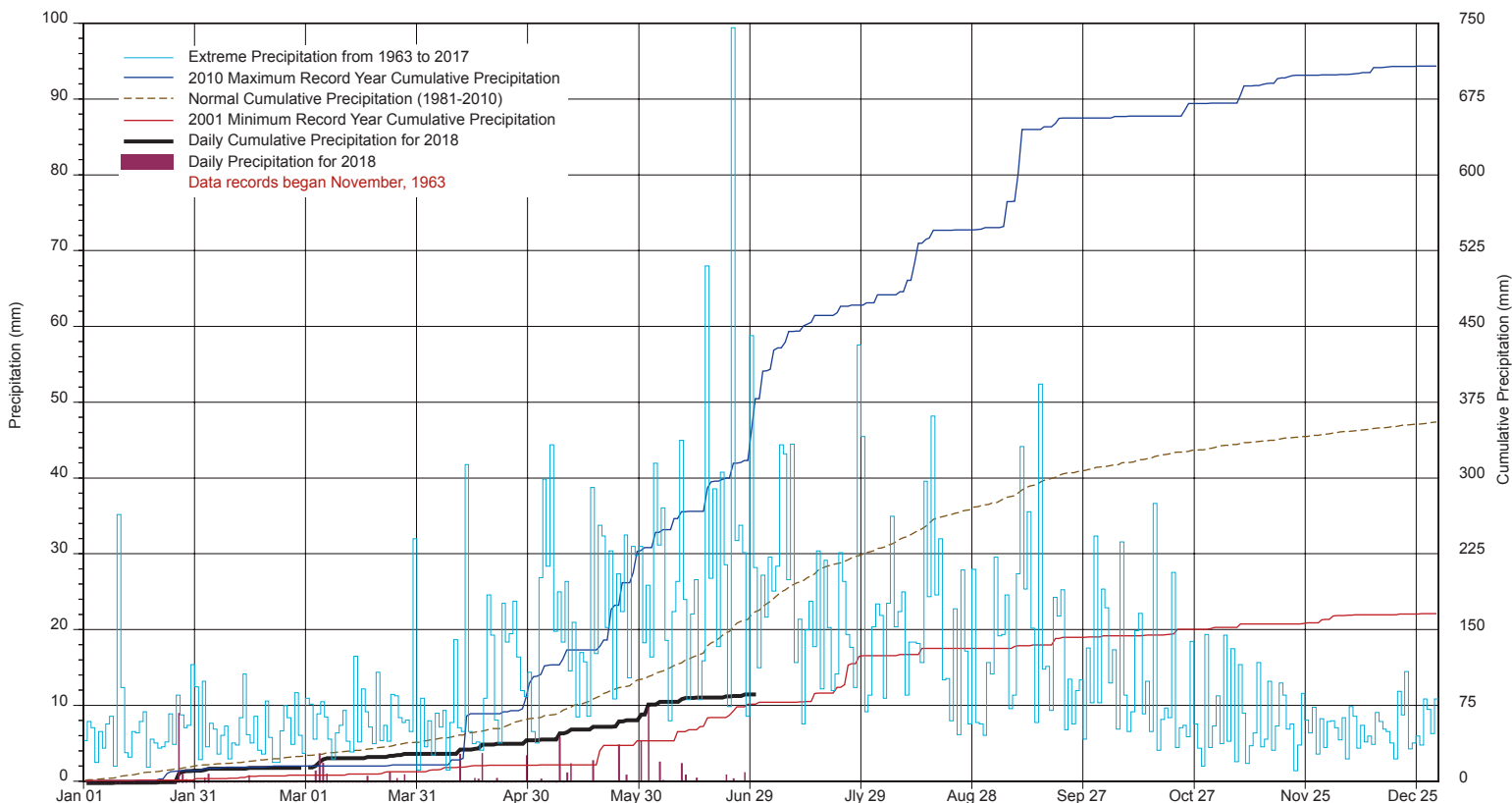
10 minute Average Wind Speed and Direction Saskatoon June 2018



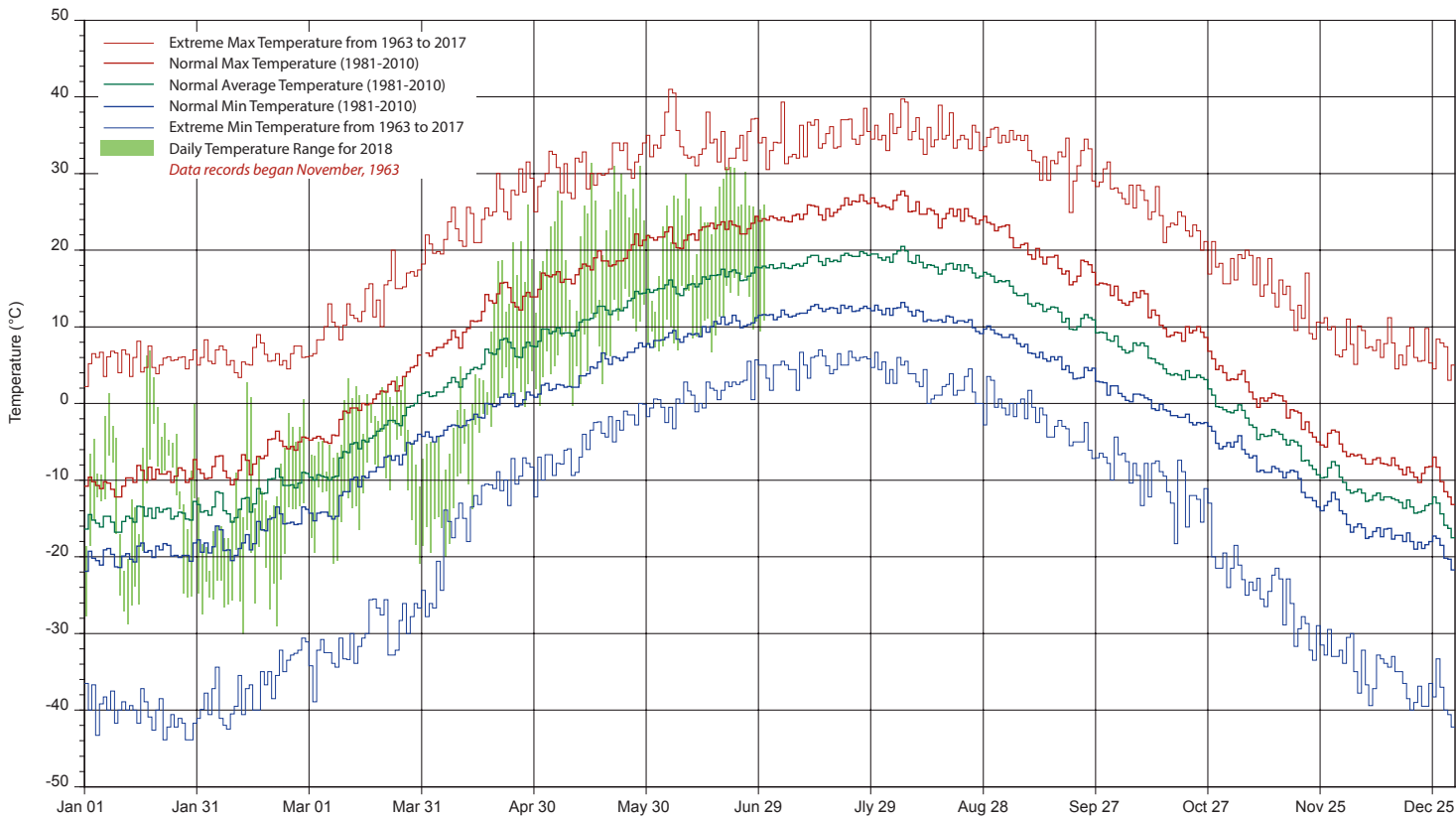
**SRC proudly recognizes the following CRS supporters:**



# SASKATCHEWAN RESEARCH COUNCIL SASKATOON CLIMATE REFERENCE STATION 2018 PRECIPITATION AND NORMALS



## 2018 TEMPERATURES AND NORMALS



SRC proudly recongnizes the following CRS supporters:

