



SRC CLIMATE REFERENCE STATION DAILY DATA REPORT

SASKATOON STATION 4057180

Saskatchewan 52°09' N 106°36' W 497 m asl Estab. 1963

Preliminary **JUNE 2023**

Day	Temperature						Degree-days			Precipitation			Relative Humidity		Station Pressure (sea level)	
	Max	Normal Max	Min	Normal Min	Mean	Normal Mean	Growing	Heating	Cooling	Geonor all-season ppt Gauge	Tipping Bucket	Notes	Max ½ hr Avg	Min ½ hr Avg	Max ½ hr Avg	Min ½ hr Avg
	°C	1991-2020	°C	1991-2020	°C	1991-2020	5°C base	18°C base	18°C base	mm	mm		%	%	mbar	mbar
1	29.0	21.9	16.2	8.7	22.6	15.3	17.6	0.0	4.6	5.0	4.8	showers	82	32	1013	1008
2	24.8	23.1	14.0	9.1	19.4	16.1	14.4	0.0	1.4	0.0	0.0		93	49	1016	1012
3	27.4	22.5	17.7	9.3	22.6	15.9	17.6	0.0	4.6	16.7	16.3	t-storm	90	54	1017	1015
4	31.3	22.3	15.5	9.0	23.4	15.7	18.4	0.0	5.4	0.0	0.0		93	36	1016	1014
5	33.5	22.0	19.6	9.5	26.6	15.8	21.6	0.0	8.6	0.0	0.0		77	27	1015	1010
6	26.6	20.8	16.2	9.7	21.4	15.3	16.4	0.0	3.4	0.0	0.0		76	46	1013	1011
7	29.3	21.2	12.9	8.5	21.1	14.9	16.1	0.0	3.1	0.0	0.0		86	32	1014	1011
8	29.8	20.4	15.5	8.8	22.7	14.7	17.7	0.0	4.7	0.0	0.0		82	26	1017	1012
9	24.7	21.1	10.7	9.2	17.7	15.2	12.7	0.3	0.0	0.0	0.0		85	32	1018	1017
10	25.4	20.9	12.6	9.1	19.0	15.0	14.0	0.0	1.0	0.0	0.0		73	27	1020	1017
11	29.8	21.2	12.4	8.8	21.1	15.0	16.1	0.0	3.1	0.0	0.0		64	20	1017	1012
12	31.4	22.2	15.8	9.4	23.6	15.8	18.6	0.0	5.6	1.5	1.5	t-storm / smoke	68	25	1013	1010
13	30.3	23.4	13.8	10.1	22.1	16.8	17.1	0.0	4.1	0.5	0.5	t-storm / smoke	81	33	1011	1004
14	31.0	22.4	14.8	10.9	22.9	16.7	17.9	0.0	4.9	0.0	0.0	smoke	89	20	1004	999
15	21.9	21.3	11.1	9.8	16.5	15.6	11.5	1.5	0.0	0.0	0.0		74	47	1012	1002
16	25.8	22.3	9.0	9.7	17.4	16.0	12.4	0.6	0.0	0.0	0.0		83	21	1016	1006
17	24.2	21.4	15.4	10.1	19.8	15.8	14.8	0.0	1.8	0.0	0.0		59	21	1016	1005
18	25.4	22.1	10.8	10.3	18.1	16.3	13.1	0.0	0.1	29.1	27.7	rain	92	33	1004	997
19	23.1	22.3	11.5	11.7	17.3	17.0	12.3	0.7	0.0	0.0	0.0		92	20	1005	997
20	22.3	21.7	10.9	10.7	16.6	16.3	11.6	1.4	0.0	0.0	0.0		72	30	1013	1005
21	19.5	23.4	9.9	10.8	14.7	17.1	9.7	3.3	0.0	0.0	0.0		86	34	1017	1013
22	23.6	23.3	8.2	11.9	15.9	17.7	10.9	2.1	0.0	0.0	0.0		81	27	1018	1015
23	28.1	23.0	10.3	11.4	19.2	17.2	14.2	0.0	1.2	0.0	0.0		74	21	1015	1013
24	28.2	22.4	11.9	10.5	20.1	16.5	15.1	0.0	2.1	0.0	0.0		71	25	1016	1013
25	29.8	23.0	14.3	11.1	22.1	17.1	17.1	0.0	4.1	2.2	2.3	t-storm	84	24	1015	1011
26	25.9	22.9	13.9	11.2	19.9	17.1	14.9	0.0	1.9	1.4	1.5	t-storm / fog	93	41	1015	1010
27	27.2	23.4	14.3	11.2	20.8	17.3	15.8	0.0	2.8	0.0	0.0		86	38	1010	1006
28	23.2	24.6	12.4	11.9	17.8	18.3	12.8	0.2	0.0	0.0	0.0		88	48	1013	1008
29	29.0	23.8	13.2	12.0	21.1	17.9	16.1	0.0	3.1	0.0	0.0		82	28	1015	1013
30	30.7	23.7	14.9	12.0	22.8	17.9	17.8	0.0	4.8	0.0	0.0		89	30	1014	1011
Total							456.3	10.1	76.4	56.4	54.6		Extreme / Date	Extreme / Date	Extreme / Date	Extreme / Date
Avg	27.1	22.3	13.3	10.2	20.2	16.3	1991-2020 Normal			73.9	1991-2020 Normal					
Extreme Date	33.5		8.2				339.1	74.2	22.9	121.7	Year to date 2023 Cumulative		93	20	1020	997
Date	5		22							168.3	Year to date Cumulative Normal		2	11	10	18

Note: Red numbers indicate manual calculation; Red cell indicate data not available

SRC proudly recognizes the following CRS supporters:

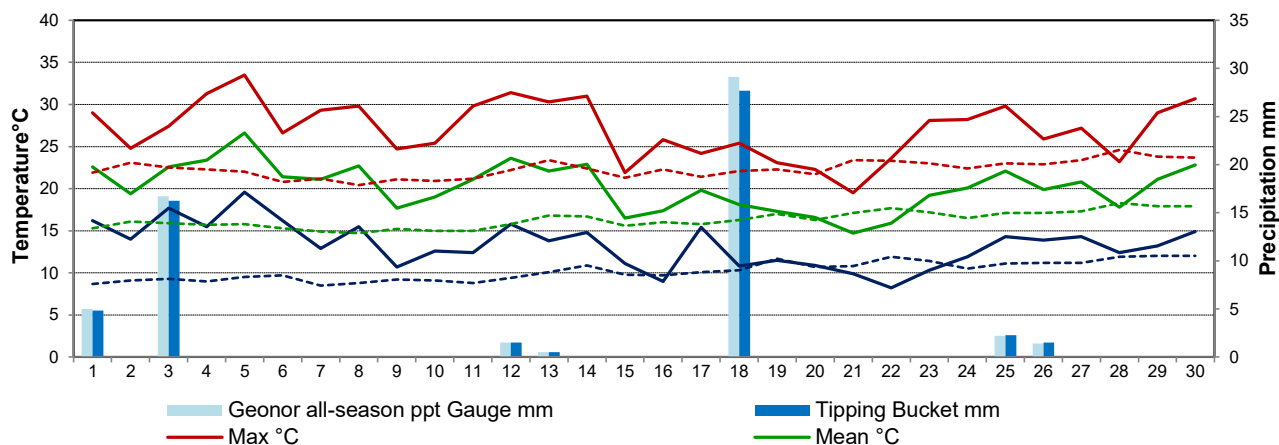


Agriculture and Agri-Food Canada

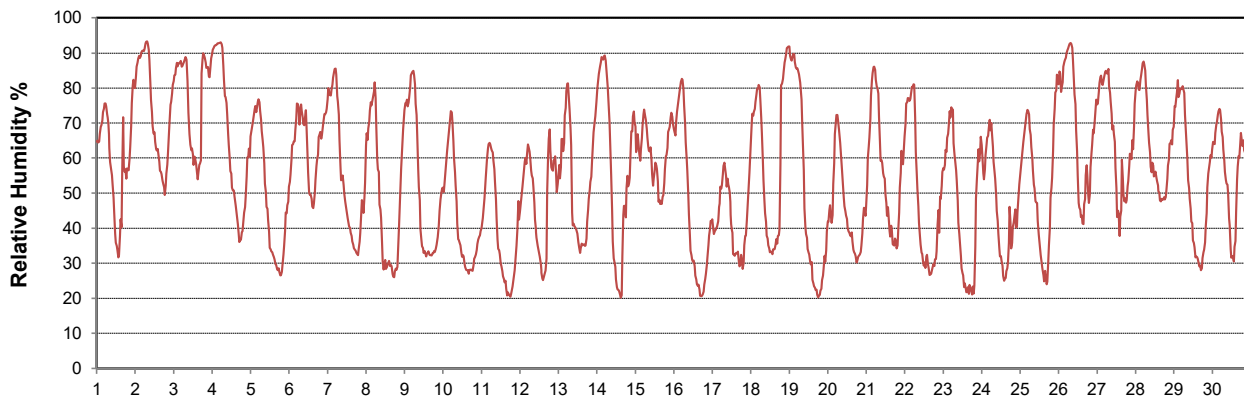
Agriculture et Agroalimentaire Canada



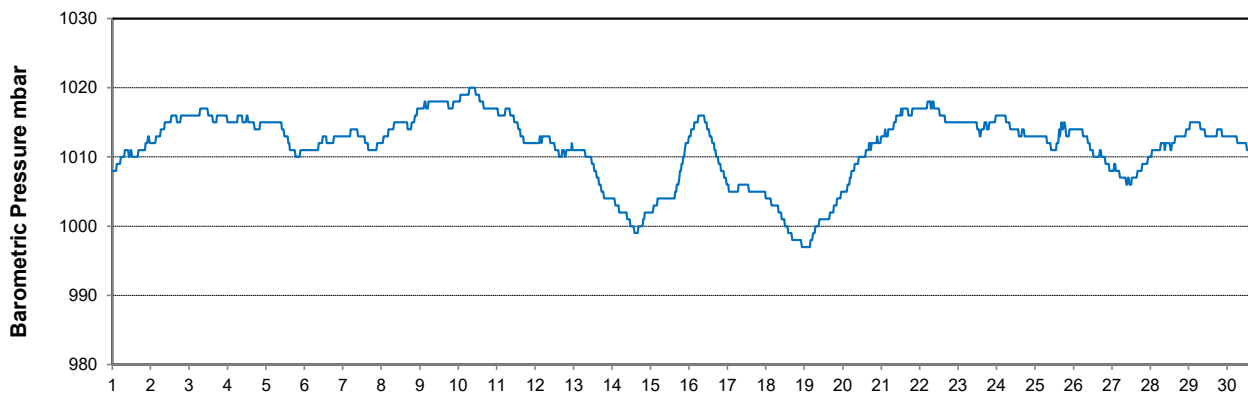
Temperature and Precipitation for June 2023



Relative Humidity for June 2023



Barometric Pressure Corrected to Sea Level for June 2023





SRC CLIMATE REFERENCE STATION DAILY DATA REPORT

SASKATOON STATION 4057180

Saskatchewan 52°09' N 106°36' W 497 m asl Estab. 1963

Preliminary JUNE 2023

Day	Wind Gust			Wind Speed (10 meters) Daily Average	Soil Temperatures at 0900hrs (rounded to the nearest 0.5C)								Radiation				
	Max	Direction	Time		Surface	5 cm	10 cm	20 cm	50 cm	100 cm	150 cm	300 cm	Bright Sunshine	Possible	% Possible	Global	Diffuse
	km/h				°C	°C	°C	°C	°C	°C	°C	°C	hours	hours		MJ/m ²	MJ/m ²
1	61.7	SSW	16:16	10.2	22.0	18.5	18.5	18.0	14.5	10.5	8.5	6.0	8.4	16.4	51.1	21.7	9.6
2	22.8	W	6:11	24.1	16.5	18.0	18.5	18.0	15.0	11.0	8.5	6.5	3.8	16.5	23.1	14.0	10.9
3	55.8	SW	17:31	11.5	21.0	19.0	19.0	18.0	15.5	11.0	9.0	6.5	3.8	16.5	23.0	12.9	9.1
4	26.6	S	18:32	6.2	22.0	18.5	18.5	18.5	15.5	11.0	9.0	6.5	13.8	16.5	83.5	27.2	6.8
5	45.4	SSE	14:21	7.5	26.0	21.0	21.0	20.0	16.0	11.5	9.0	6.5	15.3	16.6	92.4	27.6	7.5
6	50.5	N	10:42	12.7	23.5	21.0	21.5	21.0	17.0	11.5	9.5	6.5	13.6	16.6	82.0	24.8	8.9
7	23.9	NNW	13:36	25.2	20.0	19.0	20.0	20.0	17.0	12.0	9.5	6.5	15.7	16.6	94.6	29.4	6.2
8	32.2	NNE	19:14	18.7	23.5	20.5	21.0	20.5	17.5	12.0	10.0	7.0	14.6	16.6	87.8	25.9	9.2
9	32.7	NE	12:25	13.5	18.5	19.0	20.0	20.0	17.5	12.5	10.0	7.0	13.2	16.6	79.3	25.0	9.9
10	37.9	ESE	14:55	16.7	19.5	18.5	19.5	20.0	17.5	12.5	10.0	7.0	14.6	16.7	87.6	28.7	7.2
11	38.9	SSW	13:20	13.7	19.0	19.0	19.5	19.5	17.5	13.0	10.5	7.0	14.4	16.7	86.3	28.2	8.6
12	43.6	NNE	20:27	16.9	21.5	19.5	20.0	20.5	17.5	13.0	10.5	7.0	10.2	16.7	61.1	21.6	7.8
13	51.0	ESE	17:04	7.3	21.5	19.5	20.0	20.0	17.5	13.0	10.5	7.0	12.7	16.7	76.0	23.9	11.9
14	49.6	SE	12:13	11.3	21.0	19.5	20.0	20.0	17.5	13.0	10.5	7.5	10.2	16.7	61.0	21.6	10.0
15	50.1	W	16:38	10.7	15.0	18.5	19.0	19.5	17.5	13.5	11.0	7.5	7.0	16.7	41.8	18.1	10.2
16	41.6	WNW	1:28	18.3	17.0	17.0	17.5	18.0	17.0	13.5	11.0	7.5	14.6	16.7	87.2	29.2	7.5
17	35.9	SSW	1:34	29.1	18.5	19.0	19.5	19.5	17.0	13.5	11.0	7.5	5.7	16.8	34.0	16.8	13.3
18	52.6	SE	18:40	19.0	20.0	18.0	18.5	19.0	17.0	13.5	11.0	7.5	12.0	16.8	71.6	24.0	10.3
19	59.8	SSW	14:29	25.0	15.5	17.5	18.0	19.0	17.0	13.5	11.5	8.0	15.6	16.8	93.1	28.6	5.6
20	56.8	WSW	15:45	24.5	16.0	16.0	17.0	17.5	17.0	13.5	11.5	8.0	15.6	16.8	93.1	30.1	5.2
21	54.8	W	10:30	11.9	13.0	15.5	16.5	17.0	16.5	13.5	11.5	8.0	7.8	16.8	46.5	18.0	9.8
22	43.2	WSW	16:20	7.2	18.0	14.5	15.0	15.5	16.0	13.5	11.5	8.0	13.1	16.8	78.2	27.6	5.5
23	27.2	SSW	13:01	11.2	18.0	16.5	16.5	17.0	16.0	13.5	11.5	8.0	14.0	16.8	83.5	29.0	5.6
24	35.1	W	16:04	23.6	21.0	18.0	18.5	18.5	16.5	13.5	11.5	8.5	10.8	16.8	64.5	22.9	6.9
25	42.9	ENE	19:29	22.1	21.5	19.0	19.0	19.0	16.5	13.5	11.5	8.5	12.7	16.8	75.8	28.0	5.9
26	32.7	SW	0:07	21.2	16.5	19.5	20.0	20.0	17.0	13.5	11.5	8.5	11.0	16.7	65.7	24.4	8.9
27	42.0	NNE	15:32	14.8	17.5	19.5	20.0	20.0	17.5	13.5	11.5	8.5	8.8	16.7	52.6	18.9	9.2
28	34.1	NNE	14:04	17.5	18.5	19.0	19.5	20.0	17.5	14.0	11.5	8.5	15.5	16.7	92.7	27.5	6.1
29	19.1	SE	23:40	14.7	21.0	19.0	19.5	20.0	17.5	14.0	12.0	8.5	15.3	16.7	91.6	27.3	6.5
30	55.5	SSE	15:46	12.2	23.5	20.5	21.0	21.5	17.5	14.0	12.0	8.5	9.4	16.7	56.3	19.8	9.7
Total													353.2	500.2	70.6	722.7	249.8
Mean				16.0	19.5	18.6	19.1	19.2	16.8	12.8	10.6	7.5	1991-2020 Normal				
Extreme	61.7	SSW	16:16		1971- 2000 Normal for Soil Temperatures								253	500.2	50.6	612.6	218.3
Date	1				15.3	15.7	16.3	14.0	10.4	8.3	5.4	No. of Bright Sunshine days = 30					

Note: Red numbers indicate manual calculation; Red cell indicate data not available

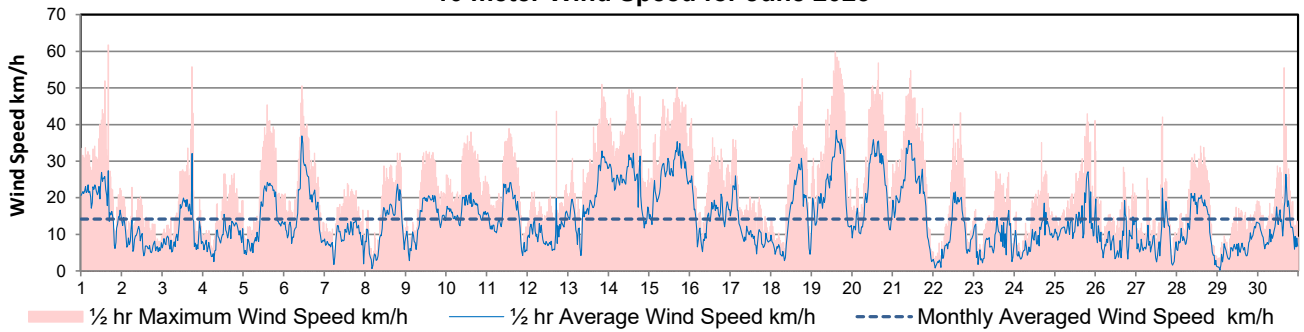
SRC proudly recognizes the following CRS supporters:



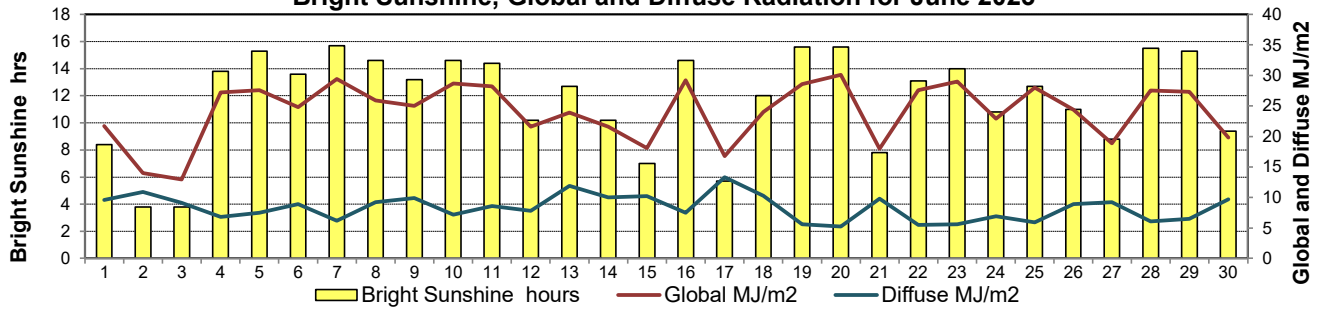
Agriculture and Agri-Food Canada / Agriculture et Agroalimentaire Canada



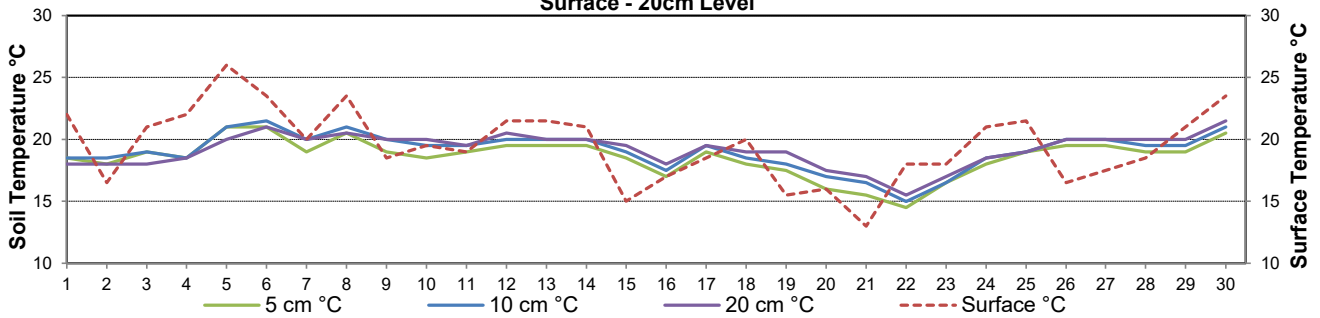
10 meter Wind Speed for June 2023



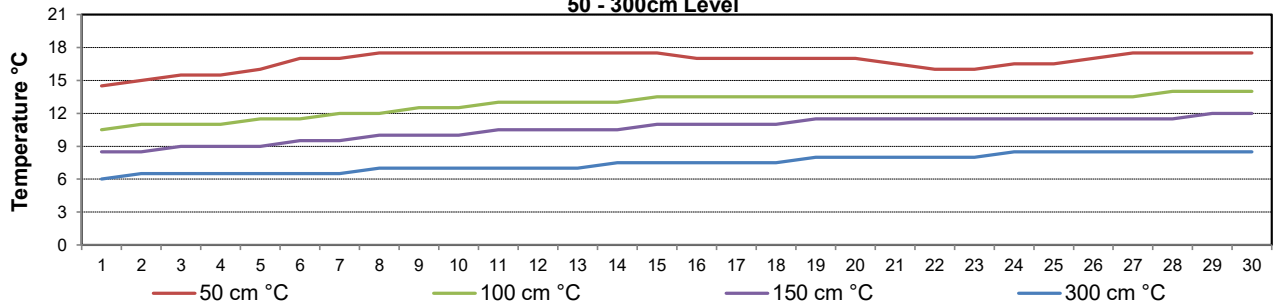
Bright Sunshine, Global and Diffuse Radiation for June 2023



**Soil Temperatures for June 2023
Surface - 20cm Level**



**Soil Temperatures for June 2023
50 - 300cm Level**





SRC CLIMATE REFERENCE STATION DAILY DATA REPORT

SASKATOON STATION 4057180

52°09' N 106°36' W 497 m asl Estab. 1963

Preliminary **JUNE 2023**

Extreme Records for June

Max/Min Temperature °C				Precipitation - Monthly mm				Wind Monthly km/h				CRS Bright Sunshine - Monthly					
S'toon Area	Date	Site	S'toon CRS	Date	S'toon Area	Date	Site	S'toon CRS	Date	S'toon Airport	Date	S'toon CRS**	Date	Hours	Year	No. of Days	Year
41.5	06/1988	S2	41.0	05/1988	186.8	1942	S	171.0	2005	117	01 ^S 1986	109.7 ^{SW}	22/2005	370.6	1978	30	1969*
-3.9	02/1917	US	-3.3	06/1967	5.0	2003	KCS	13.0	1985					175.3	2005	25	2002, 05

**1975 forward * more than one year

Notable Events for CRS Saskatoon - June						Saskatoon Area Stations			Glossary		
Element	Type	Day	New Record	Old Record	Year	SM	NWMP	c. 1892-1901	T	Trace of precipitation	
Temperature	Highest Maximum Daily	12	31.4	31.0	1987	SE	Eby	1901-1941	Normal	30 year average beginning with the decade	
		3	17.7	16.1	1970	US	Univ. of Sask.	1915-1964	SOG	Depth of snow-on-the-ground in cm	
		5	19.6	19.0	1988	S	Saskatoon	1941-1942	na	not available	
	Highest Minimum Daily	12	15.8	14.4	1965	SA	Saskatoon A	1942 -	Degree-days		
		5	19.6	19.0	1988	NRC	Nat. Res. Council	1952-1966	Tm	Mean Temperature	
		12	15.8	14.4	1965	SRC	Sask. Res. Council	1963-	Growing	(Tm-5°C); if Tm ≤ 5°C then GDD = 0	
	Highest Mean Daily	12	23.6	22.0	1987	SWT	S'toon Water Treatment Plant	1974 -	Heating	(18°C-Tm); if Tm ≤ 18°C then HDD = 0	
		Number of days when minimum daily temperature >= 10°C		27	26.0	1988	SC	S'toon Central Ave	1974-1989	Cooling	(Tm-18°C); if Tm ≥ 18°C then CDD = 0
							S1	Saskatoon 1	1976-1978	Extreme Cooling	(Tm-24°C); if Tm ≥ 24°C then CDD = 0
	Growing degree-days	Highest daily	12	18.6	17.0	1987	S2	Saskatoon 2	1977-1990	- 13 June 2023, Students and Staff from Sask Polytech Moose Jaw campus toured CRS S'toon - 21 June 2023 the west actuator on the diffuse auto-ring was replaced	
Heating degree-days	Lowest monthly		10.1	16.0	1988	K	S'toon Kernen Farm	1993-2004			
Cooling degree-days	Highest daily	12	5.6	4.0	1987	KCS	S'toon Kernen Farm CS	1996-			
Precipitation	Highest Daily Maximum	18	29.1	26.8	2014	RCS	Environment Canada	2008-			
		7	7	1964, 1968	SF	Sutherland Forestry	1943-1970				
	fewest number of days with precipitation										

Temperature
 - Second highest average maximum monthly June (28.8C 1988)
 - Second highest average minimum monthly June (13.8C 1988)
 - Second highest average mean monthly June (21.3C 1988)

	Day	New Record	Old Record	Year	Day
Highest Extreme Monthly Minimum Temperature	22	8.2	6.8	2005	25
Highest Lowest Mean Monthly Temperature	21	14.7	13.7	2016	11

SRC proudly recognizes the following CRS supporters:



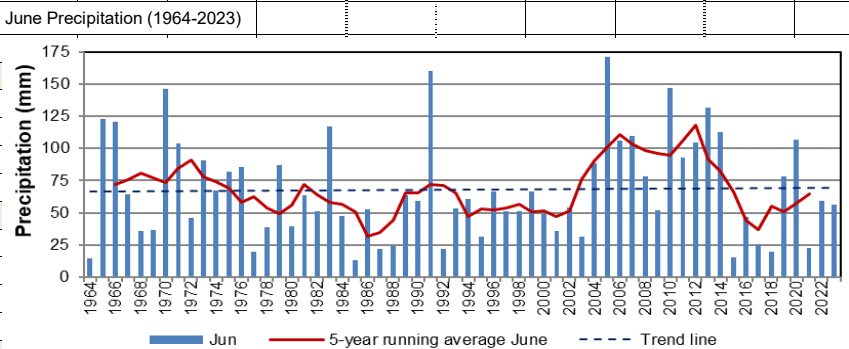
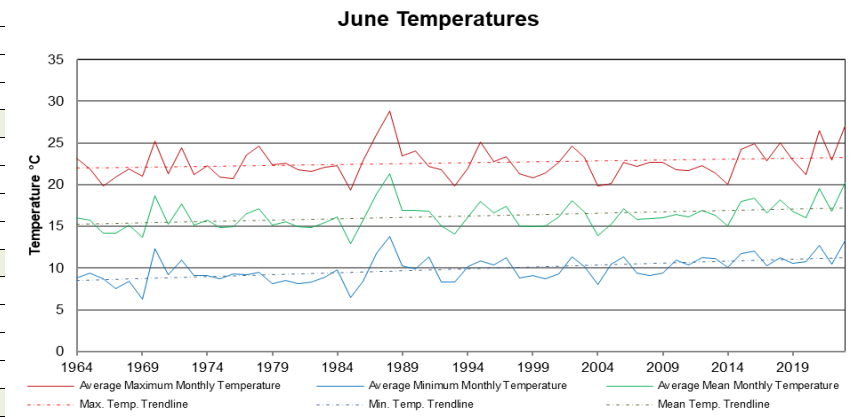


SRC CLIMATE REFERENCE STATION DAILY DATA REPORT
SASKATOON STATION 4057180

52°09' N 106°36' W 497 m asl Estab. 1963

Preliminary **June 2023**

Day	2 meter Wind Speed			Soil Moisture at 0900 hrs (rounded to the 0.5%)		
	Daily Average	Max ½ hr Avg	½ hr Extreme Max	10 cm	20 cm	50 cm
	km/h	km/h	km/h	% by volume (soil type is Loam (45.5% Sand, 41.1% Silt, 13.3% Clay))		
1	14.0	19.2	40.2	11.5	20.5	19.5
2	6.0	10.9	17.2	13.0	20.0	19.5
3	8.0	23.9	44.2	12.0	20.0	19.5
4	6.0	11.6	23.5	24.0	19.5	19.5
5	9.0	14.9	32.7	18.0	19.5	19.0
6	13.0	27.1	40.8	14.5	20.0	19.5
7	7.0	11.9	20.6	12.5	20.0	19.5
8	9.0	17.2	27.0	11.5	19.5	19.5
9	10.0	16.2	28.7	10.0	19.5	19.5
10	12.0	16.2	31.6	8.5	19.0	19.5
11	10.0	19.2	31.6	7.5	19.0	19.0
12	8.0	13.9	31.0	5.5	18.5	19.0
13	15.0	24.9	40.8	8.5	18.0	19.5
14	17.0	25.0	41.9	7.5	18.5	19.0
15	19.0	26.7	41.4	5.5	17.5	19.0
16	12.0	19.2	33.9	4.5	16.5	18.5
17	9.0	18.3	28.7	3.5	16.5	18.5
18	9.0	23.0	41.9	3.0	16.0	18.5
19	17.0	28.5	46.0	25.0	15.5	19.5
20	16.0	27.9	46.0	16.0	15.5	19.0
21	16.0	27.0	44.2	13.0	15.5	18.5
22	7.0	16.9	32.7	11.0	15.0	18.5
23	6.0	12.2	24.1	10.5	15.5	18.0
24	6.0	12.9	36.2	9.0	15.0	18.0
25	10.0	19.1	33.3	8.5	15.0	18.5
26	6.0	14.4	24.1	11.5	15.0	17.5
27	5.0	16.6	31.0	10.5	15.0	17.5
28	8.0	16.1	28.7	8.5	14.5	17.5
29	4.0	9.0	17.2	8.0	14.0	17.0
30	8.0	18.8	31.0	6.5	13.5	16.5
Total						
Mean				11	17	19
Extreme	19.0	28.5	46.0	25.0	20.5	19.5
Date	15	19	19			

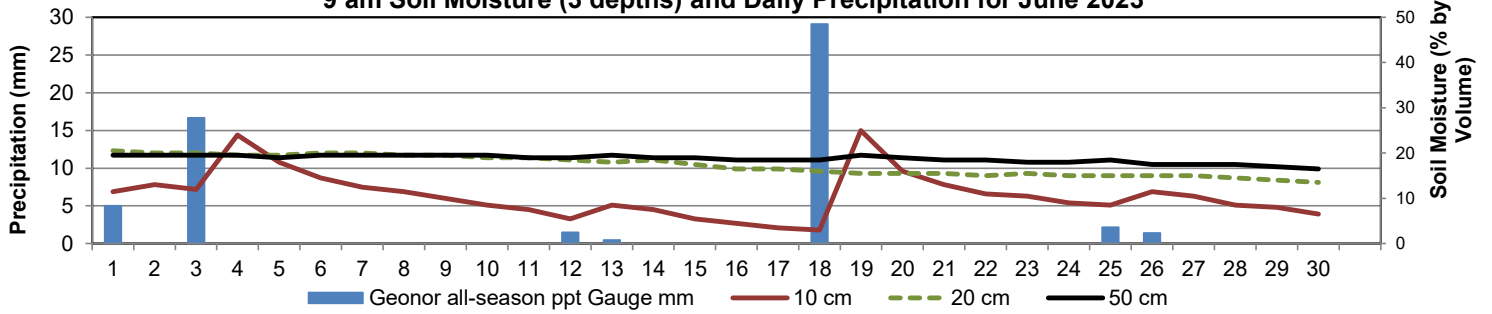


Note: Red numbers indicate manual calculation; Red cell indicate data not available

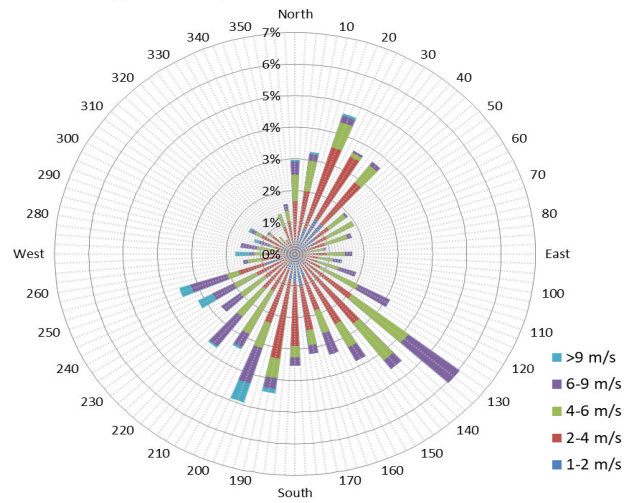
SRC proudly recognizes the following CRS supporters:



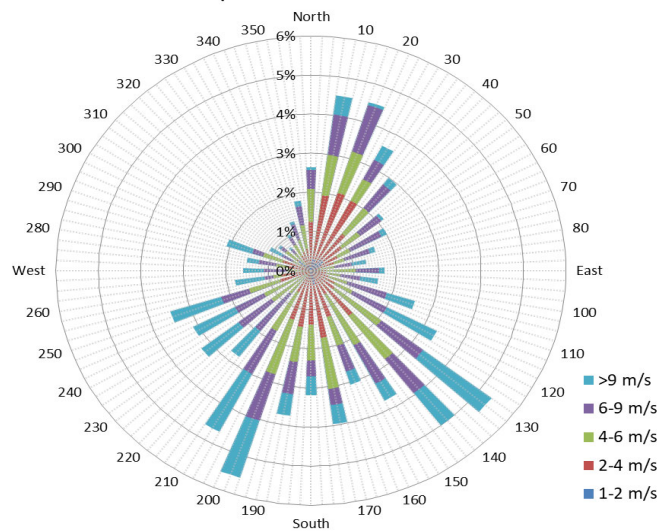
9 am Soil Moisture (3 depths) and Daily Precipitation for June 2023



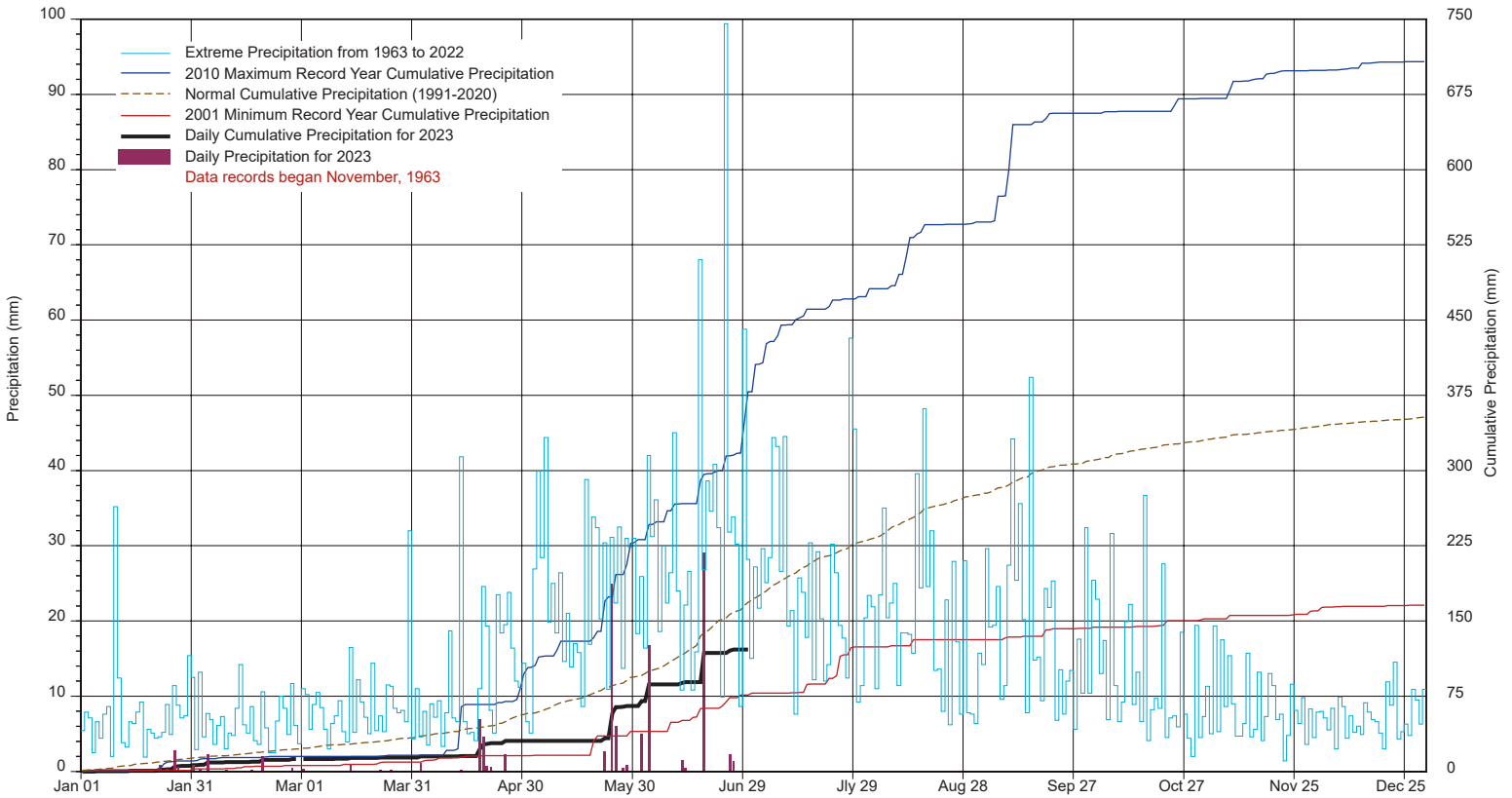
10 minute Average Wind Speed and Direction Saskatoon June 2023



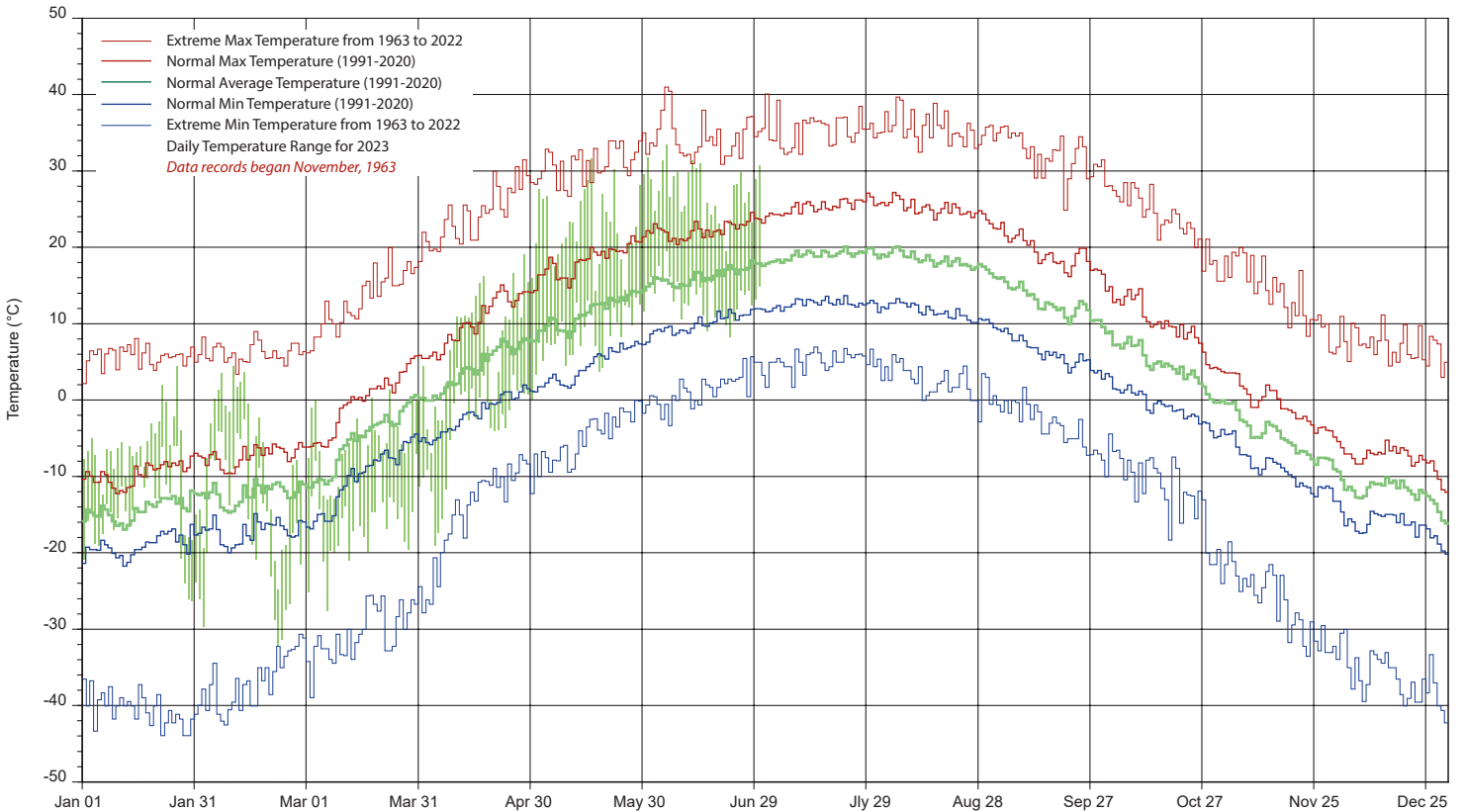
1/2 hr Maximum Wind Speed and Direction Saskatoon June 2023



SASKATCHEWAN RESEARCH COUNCIL SASKATOON CLIMATE REFERENCE STATION 2023 PRECIPITATION AND NORMALS



2023 TEMPERATURES AND NORMALS



SRC proudly recongnizes the following CRS supporters:

