



# SRC CLIMATE REFERENCE STATION DAILY DATA REPORT

## SASKATOON STATION 4057180

52°09' N 106°36' W 497 m asl Estab. 1963

Preliminary **MAY 2018**

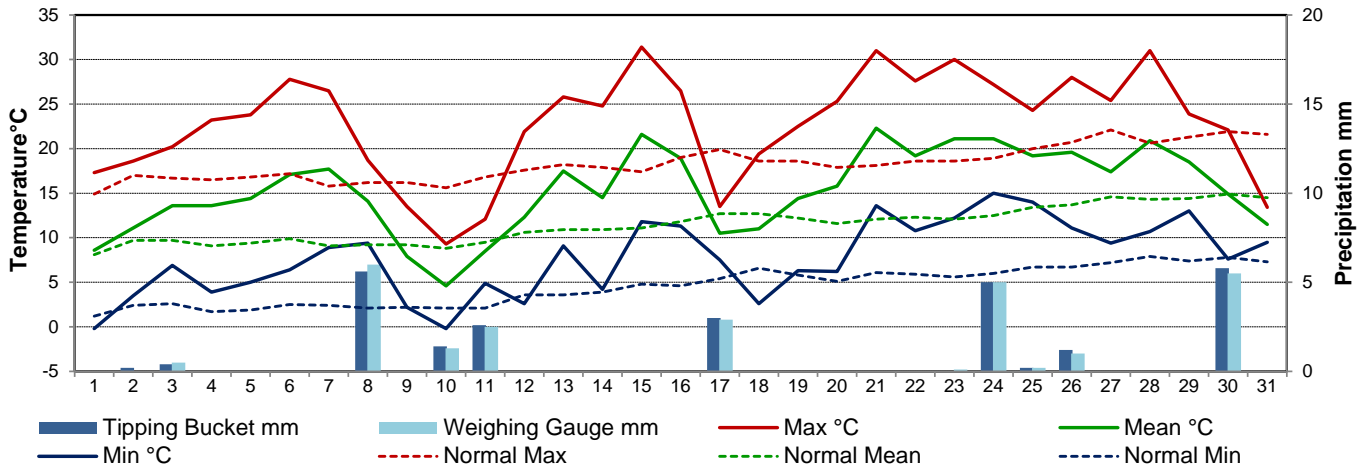
Day	Temperature						Degree-days			Precipitation			Relative Humidity		Station Pressure (sea level)	
	Max	Normal Max	Min	Normal Min	Mean	Normal Mean	Growing	Heating	Cooling	Weighing Gauge	Tipping Bucket	Notes	Max ½ hr Avg	Min ½ hr Avg	Max ½ hr Avg	Min ½ hr Avg
	°C	1981-2010	°C	1981-2010	°C	1981-2010	5°C base	18°C base	18°C base	mm	mm		%	%	mbar	mbar
1	17.3	14.9	-0.2	1.2	8.6	8.1	3.6	9.4	0.0	0.0	0.0		81	18	1011	1007
2	18.6	17.0	3.5	2.4	11.1	9.7	6.1	6.9	0.0	0.0	0.2	light rain	90	18	1010	1004
3	20.2	16.7	6.9	2.6	13.6	9.7	8.6	4.4	0.0	0.5	0.4	light rain	83	22	1011	1005
4	23.2	16.5	3.9	1.7	13.6	9.1	8.6	4.4	0.0	0.0	0.0		69	23	1014	1011
5	23.8	16.8	5.0	1.9	14.4	9.4	9.4	3.6	0.0	0.0	0.0		81	19	1018	1015
6	27.8	17.2	6.4	2.5	17.1	9.9	12.1	0.9	0.0	0.0	0.0		72	15	1019	1013
7	26.5	15.8	8.9	2.4	17.7	9.1	12.7	0.3	0.0	0.0	0.0		62	19	1018	1012
8	18.7	16.2	9.4	2.1	14.1	9.2	9.1	3.9	0.0	6.0	5.6	light rain	94	25	1019	1011
9	13.5	16.2	2.2	2.2	7.9	9.2	2.9	10.1	0.0	0.0	0.0		94	17	1021	1011
10	9.3	15.6	-0.2	2.1	4.6	8.8	0.0	13.4	0.0	1.3	1.4	light rain	80	22	1020	1014
11	12.1	16.8	4.9	2.1	8.5	9.5	3.5	9.5	0.0	2.5	2.6	light rain	91	57	1019	1015
12	21.9	17.6	2.6	3.6	12.3	10.6	7.3	5.7	0.0	0.0	0.0		93	25	1019	1010
13	25.8	18.2	9.1	3.6	17.5	10.9	12.5	0.5	0.0	0.0	0.0		66	15	1016	1010
14	24.8	17.9	4.2	3.9	14.5	10.9	9.5	3.5	0.0	0.0	0.0		88	18	1018	1008
15	31.4	17.4	11.8	4.8	21.6	11.1	16.6	0.0	3.6	0.0	0.0		54	12	1009	1005
16	26.5	19.0	11.3	4.6	18.9	11.8	13.9	0.0	0.9	0.0	0.0		61	21	1016	1010
17	13.5	19.9	7.5	5.4	10.5	12.7	5.5	7.5	0.0	2.9	3.0	light rain	86	21	1023	1012
18	19.4	18.6	2.6	6.6	11.0	12.7	6.0	7.0	0.0	0.0	0.0		96	22	1024	1023
19	22.5	18.6	6.3	5.8	14.4	12.2	9.4	3.6	0.0	0.0	0.0		66	15	1025	1019
20	25.3	17.9	6.2	5.1	15.8	11.6	10.8	2.2	0.0	0.0	0.0		60	16	1020	1010
21	31.0	18.1	13.6	6.1	22.3	12.1	17.3	0.0	4.3	0.0	0.0		50	13	1010	1006
22	27.6	18.6	10.8	5.9	19.2	12.3	14.2	0.0	1.2	0.0	0.0		77	20	1014	1009
23	30.0	18.6	12.2	5.6	21.1	12.1	16.1	0.0	3.1	0.1	0.0		78	21	1014	1009
24	27.2	18.9	15.0	6.0	21.1	12.5	16.1	0.0	3.1	5.0	5.0	light rain & t-storm	89	33	1010	1003
25	24.3	20.0	14.0	6.7	19.2	13.4	14.2	0.0	1.2	0.2	0.2	t-storm	89	48	1006	1003
26	28.0	20.7	11.1	6.7	19.6	13.7	14.6	0.0	1.6	1.0	1.2	t-storm	93	35	1008	1003
27	25.4	22.1	9.4	7.2	17.4	14.6	12.4	0.6	0.0	0.0	0.0		94	21	1017	1009
28	31.0	20.6	10.7	7.9	20.9	14.3	15.9	0.0	2.9	0.0	0.0		71	19	1018	1007
29	23.9	21.3	13.0	7.4	18.5	14.4	13.5	0.0	0.5	0.0	0.0		70	33	1008	1005
30	22.1	21.9	7.6	7.8	14.9	14.9	9.9	3.1	0.0	5.5	5.8	t-storm	86	28	1009	1003
31	13.4	21.6	9.5	7.3	11.5	14.5	6.5	6.5	0.0	0.0	0.0		92	69	1015	1007
Total							318.8	107.0	22.4	25.0	25.4		Extreme / Date	Extreme / Date	Extreme / Date	Extreme / Date
Avg	22.8	18.3	7.7	4.6	15.3	11.5	1981-2010 Normal			39.4	1981-2010 Normal					
Extreme Date	31.4		-0.2				206.9	209.3	6.3	66.7	Cumulative		96	12	1025	1003
	15		1 & 10							100.9	Cumulative Normal		18	15	19	24

Note: Red numbers indicate manual calculation; Red cell indicate data not available

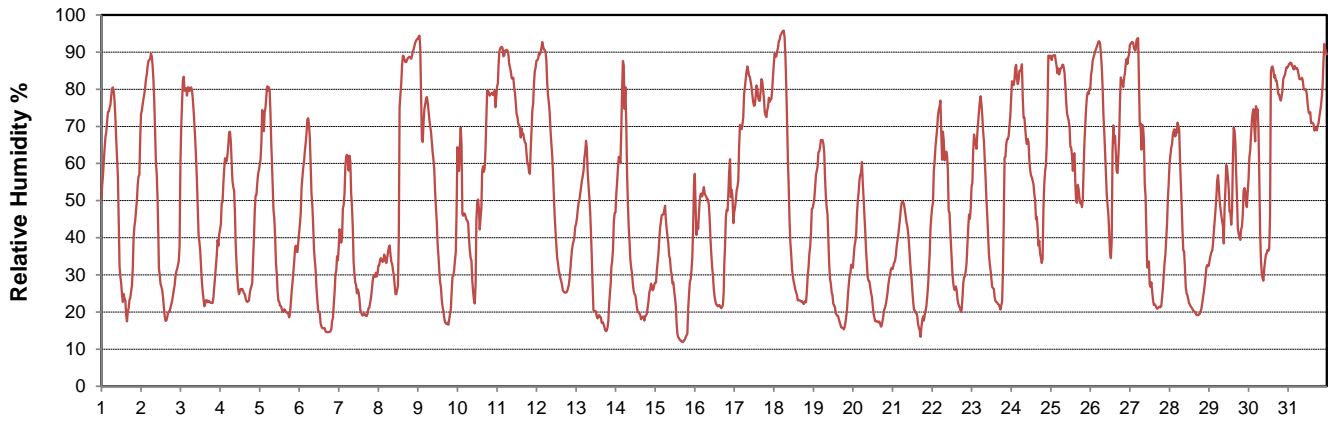
### SRC proudly recognizes the following CRS supporters:



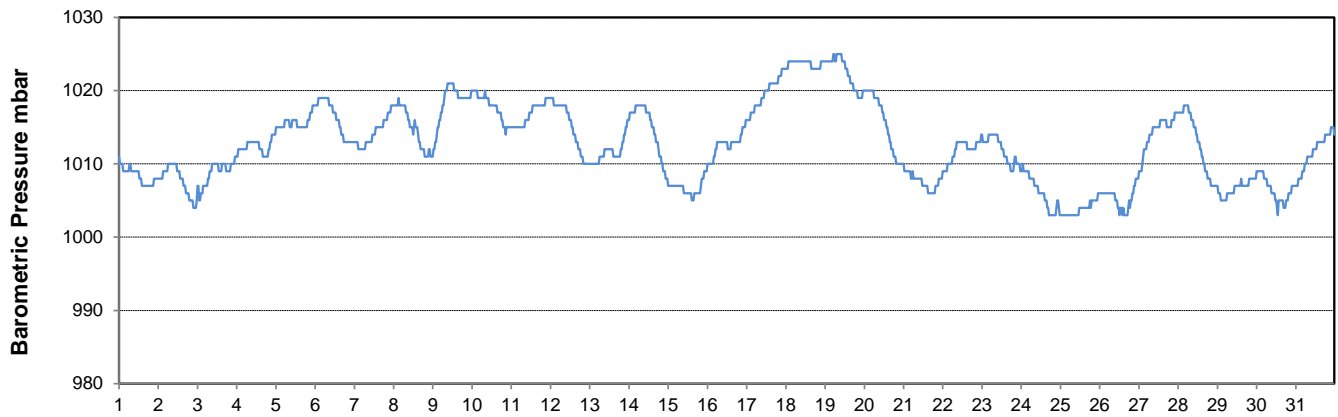
### Temperature and Precipitation for May 2018



### Relative Humidity for May 2018



### Barometric Pressure Corrected to Sea Level for May 2018





# SRC CLIMATE REFERENCE STATION DAILY DATA REPORT

**SASKATOON STATION 4057180**

52°09' N 106°36' W 497 m asl Estab. 1963

Preliminary **MAY 2018**

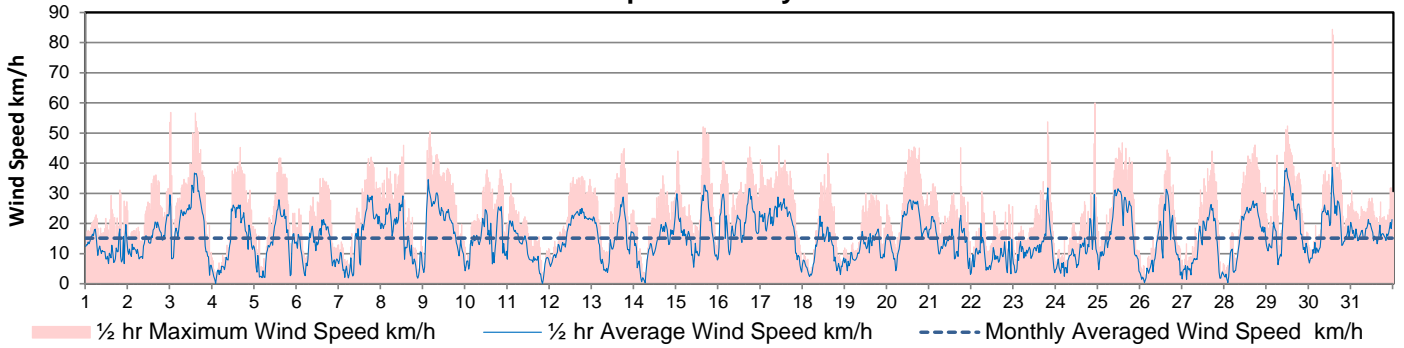
Day	Wind Gust			Soil Temperatures at 0900hrs								Soil Moisture 30 cm	Radiation				
	Max	Direction	Time	Surface	5 cm	10 cm	20 cm	50 cm	100 cm	150 cm	300 cm		0900hrs	Bright Sunshine	Possible	% Possible	Global
	km/h			°C	°C	°C	°C	°C	°C	°C	°C	%	hours	hours		MJ/m <sup>2</sup>	MJ/m <sup>2</sup>
1	31.0	NW	19:21	6.0	5.5	6.0	6.5	5.0	0.5	0.5	2.5	16	11.7	14.9	78.3	24.0	3.3
2	53.5	SW	23:53	8.5	8.0	8.5	8.0	5.0	1.0	0.5	2.5	16	10.4	15.0	69.3	22.5	4.1
3	56.8	NW	0:13	10.5	9.0	9.5	9.0	5.5	1.5	1.0	2.5	16	11.3	15.1	75.1	20.4	5.8
4	45.2	NW	15:42	10.0	8.5	8.5	8.5	6.0	2.0	1.0	2.5	16	9.2	15.1	60.9	19.5	7.6
5	41.8	NW	14:11	14.0	9.5	10.0	9.0	6.5	2.5	1.5	2.5	16	10.0	15.2	65.9	21.2	7.4
6	35.0	W	14:34	15.0	10.5	10.5	10.0	7.0	3.0	1.5	2.5	15	13.7	15.2	90.0	25.9	3.7
7	42.0	E	18:18	16.5	12.0	12.0	11.5	7.5	3.0	2.0	2.5	15	7.8	15.3	51.0	16.7	6.9
8	45.9	SW	12:51	13.0	12.0	12.5	11.5	8.5	3.5	2.5	2.5	15	5.2	15.3	33.9	10.6	6.1
9	50.6	N	3:38	5.0	8.5	9.5	10.0	8.5	4.0	2.5	2.5	15	15.0	15.4	97.4	27.9	2.2
10	37.8	SSE	12:05	6.5	8.0	9.0	9.5	8.5	4.5	3.0	2.5	15	0.2	15.5	1.3	8.6	6.5
11	33.2	E	1:50	5.5	7.5	8.0	8.0	7.5	4.5	3.0	2.5	15	2.9	15.5	18.7	7.7	5.2
12	35.6	SSW	18:02	9.0	7.0	7.0	7.5	7.5	4.5	3.5	3.0	15	14.8	15.6	95.1	27.3	3.1
13	44.8	NNW	18:27	16.0	10.0	10.0	9.5	7.5	4.5	3.5	3.0	15	11.9	15.6	76.2	23.4	5.3
14	35.8	SW	16:12	13.0	10.5	11.0	11.0	8.5	5.0	3.5	3.0	15	13.1	15.7	83.6	25.6	4.3
15	52.1	NW	15:15	19.5	12.5	13.0	12.0	9.0	5.0	3.5	3.0	15	13.1	15.7	83.3	24.5	5.3
16	45.4	NNE	17:51	14.0	14.0	14.5	13.5	10.0	5.5	4.0	3.0	15	10.7	15.8	67.9	22.5	6.7
17	45.9	NE	10:14	7.5	13.5	14.5	14.0	10.5	5.5	4.0	3.0	14	0.0	15.8	0.0	4.7	3.6
18	43.2	NE	14:02	11.0	9.5	10.5	11.0	10.0	6.0	4.5	3.5	14	14.0	15.9	88.2	27.8	3.8
19	29.9	W	11:41	13.5	11.5	12.0	12.0	10.5	6.5	4.5	3.5	14	15.2	15.9	95.5	28.2	2.8
20	45.4	S	15:12	17.0	12.0	12.5	12.5	10.5	6.5	4.5	3.5	14	15.2	16.0	95.2	28.3	2.6
21	45.1	NNW	17:57	19.5	14.0	14.5	13.5	10.5	6.5	5.0	3.5	13	13.7	16.0	85.6	27.2	4.2
22	30.6	ENE	5:58	15.5	15.0	15.5	15.0	11.5	6.5	5.0	3.5	13	10.8	16.1	67.3	22.4	5.4
23	53.7	SSE	19:11	20.5	16.0	16.0	15.5	12.0	7.0	5.0	3.5	13	12.3	16.1	76.4	25.6	4.5
24	60.0	NNW	22:01	21.0	18.0	18.0	16.5	13.0	7.5	5.5	4.0	13	9.1	16.1	56.4	19.0	9.0
25	46.8	WNW	13:53	16.5	16.5	17.0	16.5	13.5	7.5	5.5	4.0	13	7.9	16.2	48.8	17.3	7.9
26	44.4	ENE	15:08	19.5	15.0	15.5	15.5	13.5	8.0	6.0	4.0	13	8.6	16.2	53.0	18.9	5.9
27	44.0	NW	16:45	13.5	14.0	15.0	15.0	13.5	8.0	6.0	4.0	13	12.9	16.3	79.3	25.1	5.5
28	46.0	S	17:21	20.5	14.5	15.5	15.5	13.5	8.5	6.5	4.0	13	15.4	16.3	94.5	28.4	3.4
29	52.3	NNE	11:34	20.5	17.5	17.5	16.5	13.5	8.5	6.5	4.5	13	11.0	16.3	67.4	22.1	7.2
30	84.4	WNW	13:26	19.0	15.0	16.0	16.0	14.0	9.0	6.5	4.5	12	4.8	16.4	29.3	10.7	5.5
31	31.8	ENE	22:31	10.0	13.5	14.0	14.5	13.5	9.0	7.0	4.5	13	0.0	16.4	0.0	7.5	5.7
Total													311.9	487.7	63.9	641.5	160.5
Mean				13.8	11.9	12.4	12.1	9.7	5.3	3.8	3.2	14	1981-2010 Normal for Radiation				
Extreme	84.4	WNW	13:26	1971- 2000 Normal for Soil Temperatures									256.9	487.6	52.7	603.5	221.5
Date	30				10.3	10.8	11.3	9.3	6.4	4.8	3.4		No. of Bright Sunshine days = 29				

Note: Red numbers indicate manual calculation; Red cell indicate data not available

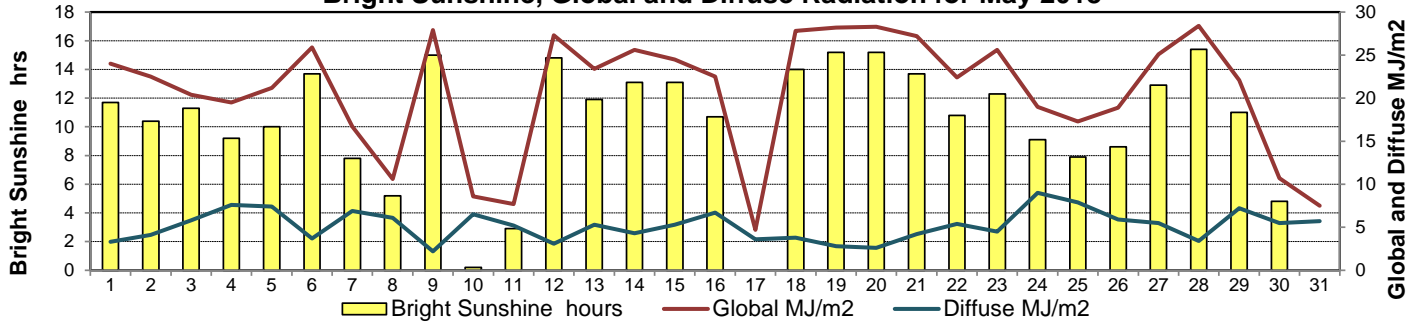
**SRC proudly recognizes the following CRS supporters:**



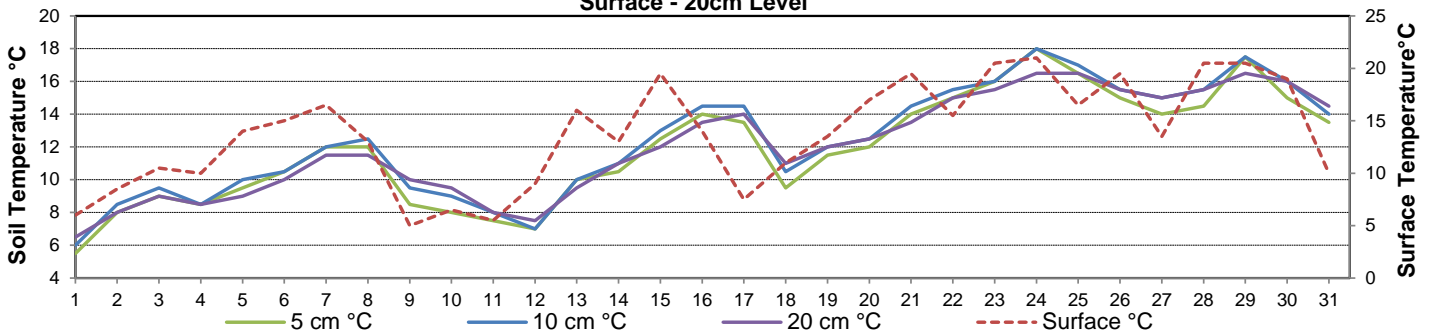
**Wind Speed for May 2018**



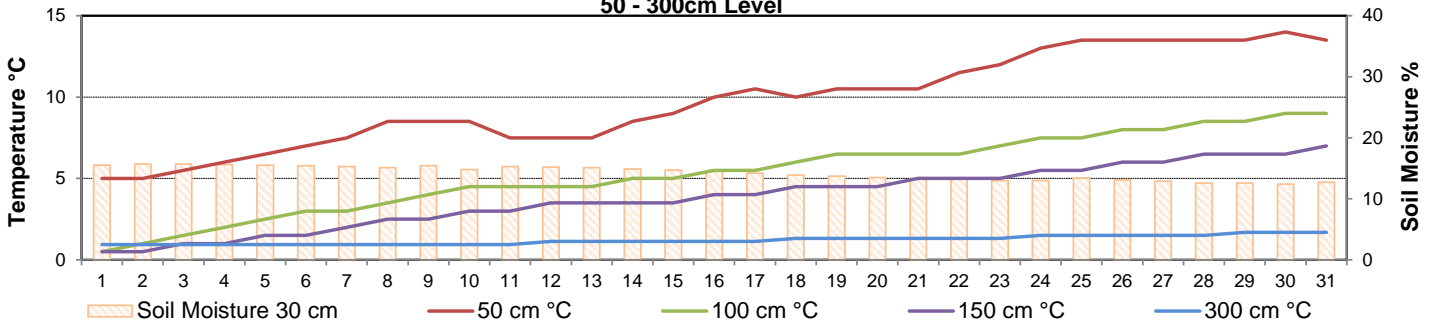
**Bright Sunshine, Global and Diffuse Radiation for May 2018**



**Soil Temperatures for May 2018  
Surface - 20cm Level**



**Soil Temperatures for May 2018  
50 - 300cm Level**





SRC CLIMATE REFERENCE STATION DAILY DATA REPORT

**SASKATOON STATION** 4057180

52°09' N 106°36' W 497 m asl Estab. 1963

Preliminary **MAY** 2018

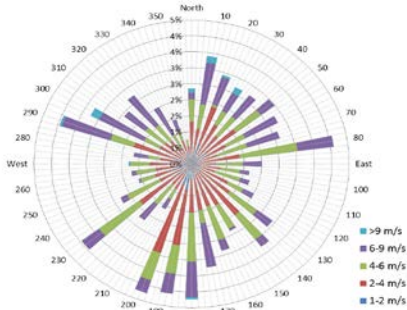
**Extreme Records for May**

Max/Min Temperature °C			Precipitation - Monthly mm			Wind Monthly km/h			CRS Bright Sunshine - Monthly									
S'toon Area	Date	Site	S'toon CRS	Date	S'toon Area	Date	Site	S'toon CRS	Date	S'toon Airport	Date	S'toon CRS**	Date	Hours	Year	No. of Days	Year	
37.2	27/1936	SE	35.0	30/1988	178.0	1977	SWT	145.3	1977	132	17 <sup>SW</sup>	1965	108	1991	389.3	1980	31	1966*
-12.8	06/1907	SE	-10.0	02/1967	0.0	02, '02, 1988	SWT, K, SC	0.2	2002						153.0	1996	24	2006

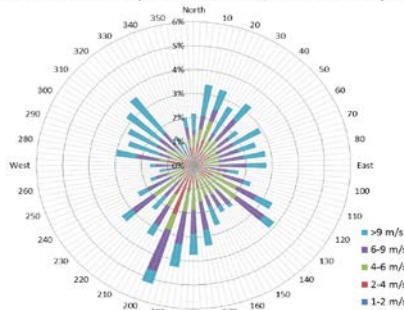
\*\*1975 forward \* more than one year

Notable Events for CRS Saskatoon - May						Saskatoon Area Stations			Glossary	
Element	Type	Day	New Record	Old Record	Year	SM	NWMP	c. 1892-1901	T	Trace of precipitation
Temperature	Highest Maximum Daily	15	31.4	30.0	1984	SE	Eby	1901-1941	Normal	30 year average beginning with the decade
	Highest Average Daily	7	17.7	16.3	1994	US	Univ. of Sask.	1915-1964	SOG	Depth of snow-on-the-ground in cm
	Highest Average Daily	15	21.6	21.0	1984	S	Saskatoon	1941-1942	na	not available
	Highest Average Daily	16	18.9	18.8	1984	SA	Saskatoon A	1942 -	<b>Degree-days</b>	
	Daily Average Minimum Monthly		7.7	7.7	1977	NRC	Nat. Res. Council	1952-1966	Tm	Mean Temperature
					SRC	Sask. Res. Council	1963-	Growing	(Tm-5°C); if Tm ≤ 5°C then GDD = 0	
					SWT	S'toon Water Treatment Plant	1974 -	Heating	(18°C-Tm); if Tm ≤ 18°C then HDD = 0	
					SC	S'toon Central Ave	1974-1989	Cooling	(Tm-18°C); if Tm ≥ 18°C then CDD = 0	
					S1	Saskatoon 1	1976-1978	Extreme Cooling	(Tm-24°C); if Tm ≥ 24°C then CDD = 0	
					S2	Saskatoon 2	1977-1990			
					K	S'toon Kernen Farm	1993-2004			
					KCS	S'toon Kernen Farm CS	1996-			
					RCS	Environment Canada	2008-			
					SF	Sutherland Forestry	1943-1970			

10 minute Average Wind Speed and Direction Saskatoon May 2018



1/2 hr Maximum Wind Speed and Direction Saskatoon May 2018



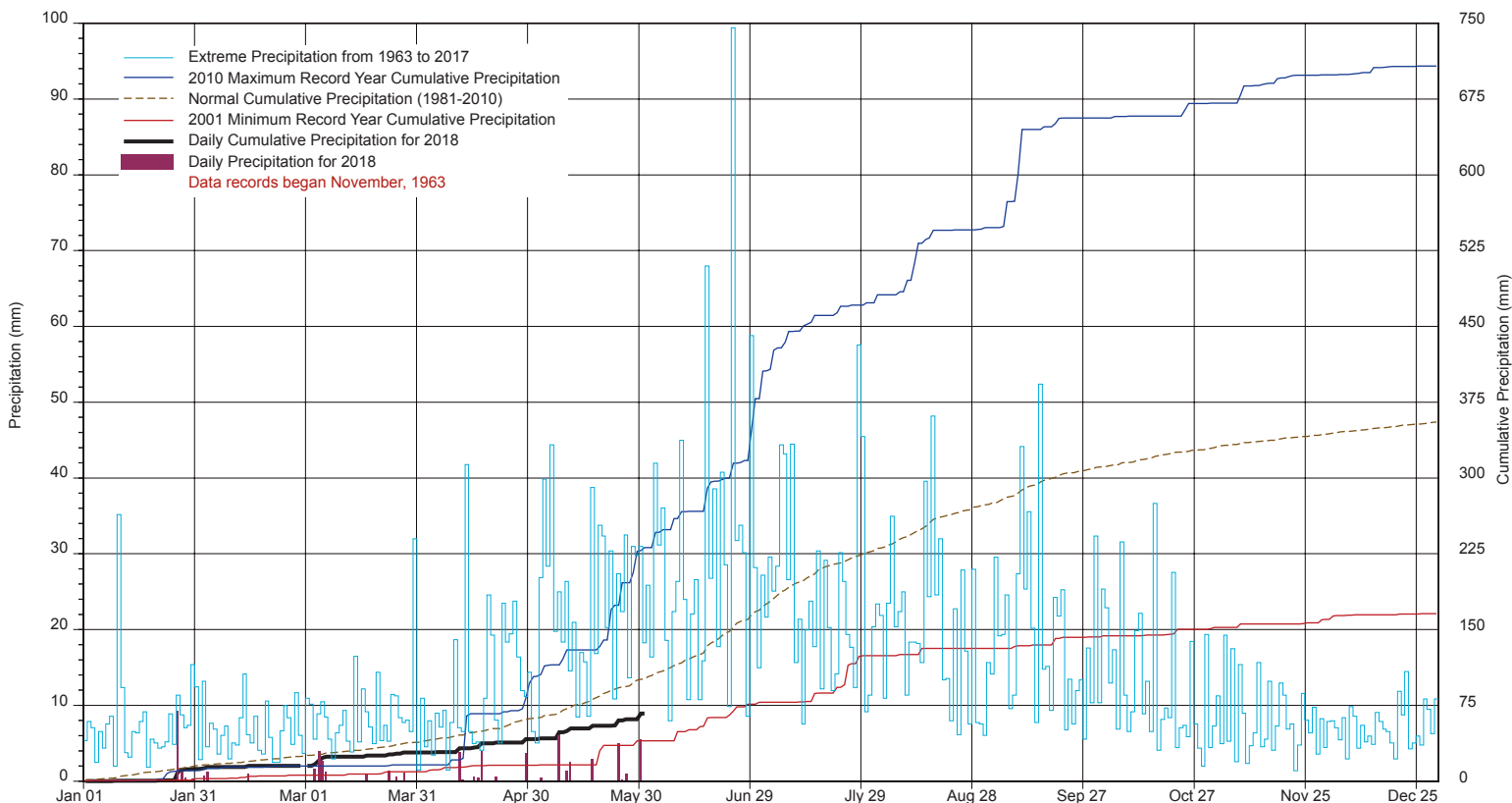
**SRC proudly recognizes the following CRS supporters:**



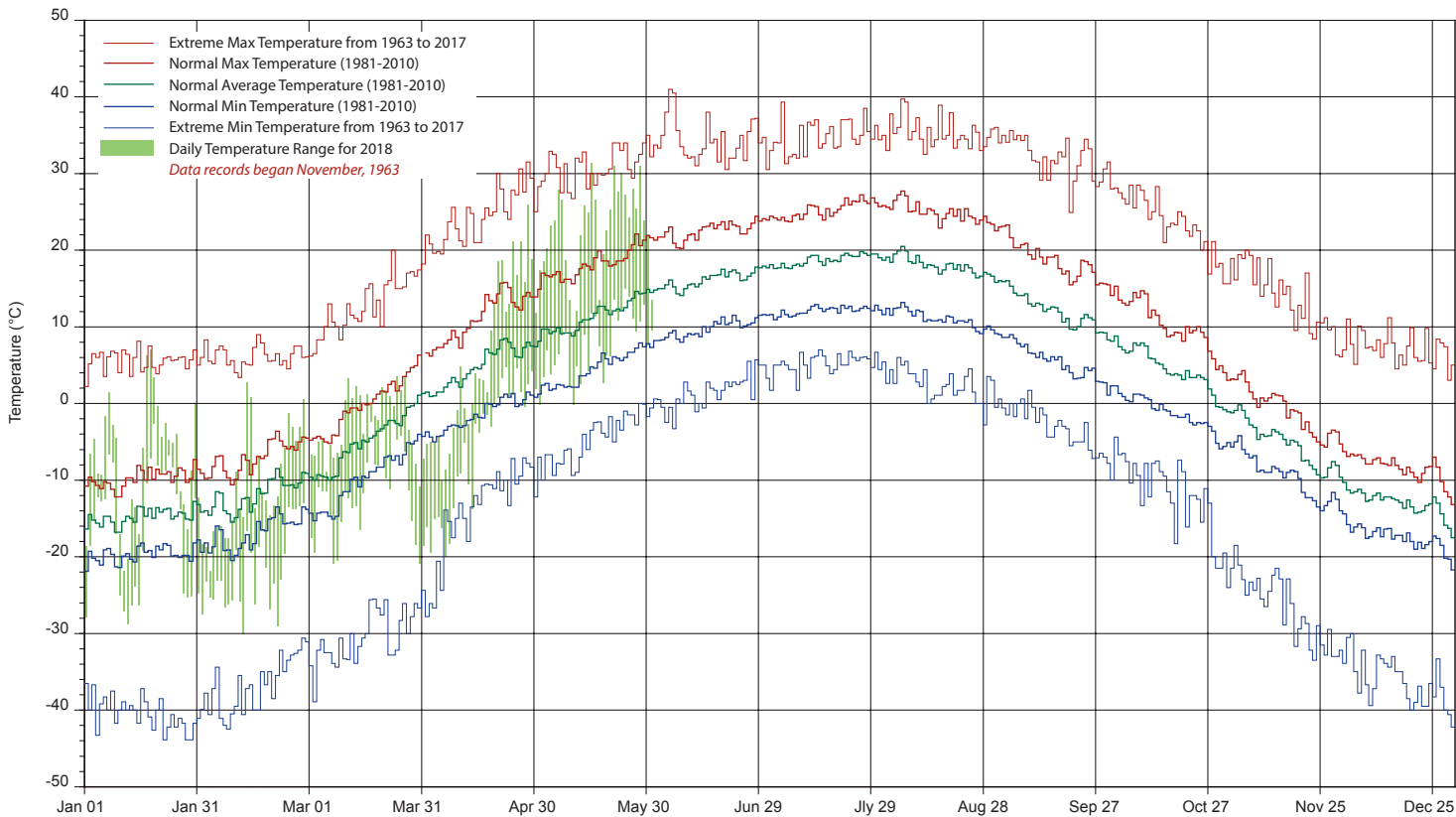
Agriculture and Agri-Food Canada / Agriculture et Agroalimentaire Canada



# SASKATCHEWAN RESEARCH COUNCIL SASKATOON CLIMATE REFERENCE STATION 2018 PRECIPITATION AND NORMALS



## 2018 TEMPERATURES AND NORMALS



SRC proudly recongnizes the following CRS supporters:



Agriculture and  
Agri-Food Canada

Agriculture et  
Agroalimentaire Canada



UNIVERSITY OF  
SASKATCHEWAN

