



SRC CLIMATE REFERENCE STATION DAILY DATA REPORT

SASKATOON STATION 4057180

52°09' N 106°36' W 497 m asl Estab. 1963

Preliminary MAY 2024

Day	Temperature						Degree-days			Precipitation			Relative Humidity		Station Pressure (sea level)	
	Max	Normal Max	Min	Normal Min	Mean	Normal Mean	Growing	Heating	Cooling	Geonor all-season ppt Gauge	Tipping Bucket	Notes	Max ½ hr Avg	Min ½ hr Avg	Max ½ hr Avg	Min ½ hr Avg
	°C	1991-2020	°C	1991-2020	°C	1991-2020	5°C base	18°C base	18°C base	mm	mm		%	%	mbar	mbar
1	6.9	14.4	0.8	1.1	3.9	7.8	0.0	14.1	0.0	5.1	5.1	snow/rain	94	61	1011	1007
2	5.4	16.4	0.4	1.8	2.9	9.1	0.0	15.1	0.0	4.6	4.1	snow/rain	95	80	1013	1010
3	9.2	16.4	2.4	1.8	5.8	9.1	0.8	12.2	0.0	5.1	5.1	snow/rain	93	58	1017	1013
4	12.4	17.2	4.4	2.3	8.4	9.8	3.4	9.6	0.0	0.3	0.3	showers	92	45	1017	1013
5	19.4	18.7	0.4	2.9	9.9	10.8	4.9	8.1	0.0	0.0	0.0		93	25	1013	1003
6	15.0	17.9	10.4	3.4	12.7	10.6	7.7	5.3	0.0	9.3	9.1	rain	90	44	1002	996
7	20.0	15.8	9.8	2.6	14.9	9.2	9.9	3.1	0.0	6.0	6.1	rain	90	37	1006	995
8	21.8	16.0	7.4	2.0	14.6	9.1	9.6	3.4	0.0	0.0	0.0		78	31	1019	1007
9	21.3	16.0	9.3	1.9	15.3	9.0	10.3	2.7	0.0	0.0	0.0		80	16	1022	1019
10	26.8	14.7	5.8	1.6	16.3	8.2	11.3	1.7	0.0	0.0	0.0		64	15	1020	1006
11	23.4	15.9	9.0	2.0	16.2	9.0	11.2	1.8	0.0	0.0	0.0	smoke	56	12	1009	1004
12	19.8	18.1	4.5	3.2	12.2	10.7	7.2	5.8	0.0	0.0	0.0		67	21	1013	1009
13	17.2	18.4	9.2	3.9	13.2	11.2	8.2	4.8	0.0	0.0	0.0		70	40	1011	1009
14	19.1	18.3	7.4	3.9	13.3	11.1	8.3	4.7	0.0	2.4	2.3	showers	86	38	1014	1011
15	19.4	18.5	8.1	4.4	13.8	11.5	8.8	4.2	0.0	0.5	0.5	showers	87	38	1012	1007
16	19.4	20.0	5.6	4.8	12.5	12.4	7.5	5.5	0.0	0.0	0.0		93	38	1007	998
17	16.7	19.4	10.1	5.7	13.4	12.6	8.4	4.6	0.0	1.7	1.5	showers	91	38	1005	995
18	14.5	19.0	5.8	6.1	10.2	12.6	5.2	7.8	0.0	0.1	0.0		73	40	1007	1001
19	17.7	19.5	2.0	5.8	9.9	12.7	4.9	8.1	0.0	0.0	0.0		81	29	1010	1007
20	13.5	18.6	6.4	5.4	10.0	12.0	5.0	8.0	0.0	9.1	8.9	showers	91	57	1011	1009
21	11.8	19.8	6.5	6.9	9.2	13.4	4.2	8.8	0.0	2.6	2.8	showers	92	67	1010	1008
22	10.8	19.7	3.5	6.4	7.2	13.1	2.2	10.8	0.0	0.0	0.0	mist	92	61	1014	1009
23	14.3	19.5	3.0	6.3	8.7	12.9	3.7	9.3	0.0	0.0	0.0		86	46	1014	1012
24	16.7	19.6	3.2	7.5	10.0	13.5	5.0	8.0	0.0	0.0	0.0		90	36	1012	1005
25	17.5	19.3	3.7	6.7	10.6	13.1	5.6	7.4	0.0	0.0	0.0		80	32	1007	1004
26	20.9	20.5	8.1	6.9	14.5	13.8	9.5	3.5	0.0	0.0	0.0		65	30	1010	1005
27	22.0	21.5	7.3	7.1	14.7	14.3	9.7	3.3	0.0	0.0	0.0		73	19	1019	1010
28	25.7	20.8	7.5	7.7	16.6	14.2	11.6	1.4	0.0	0.0	0.0		73	25	1020	1012
29	22.7	20.7	14.5	7.4	18.6	14.1	13.6	0.0	0.6	0.9	0.5	showers	78	38	1012	1005
30	16.1	21.4	9.1	7.3	12.6	14.4	7.6	5.4	0.0	2.3	2.0	showers	87	42	1007	1005
31	19.1	22.2	9.1	7.6	14.1	14.9	9.1	3.9	0.0	0.7	0.8	showers	87	20	1009	1006
Total							214.4	192.4	0.6	50.7	49.0		Extreme / Date	Extreme / Date	Extreme / Date	Extreme / Date
Avg	17.3	18.5	6.3	4.7	11.8	11.6	1991-2020 Normal			37.6	1991-2020 Normal					
Extreme Date	26.8		0.4				211.0	204.0	6.1	135.4	Year to date 2024 Cumulative		95	12	1022	995
	10		2							94.4	Year to date Cumulative Normal		2	11	9	7

Note: Red numbers indicate manual calculation; Red cell indicate data not available

It has not been corrected for wind speed.

SRC proudly recognizes the following CRS supporters:

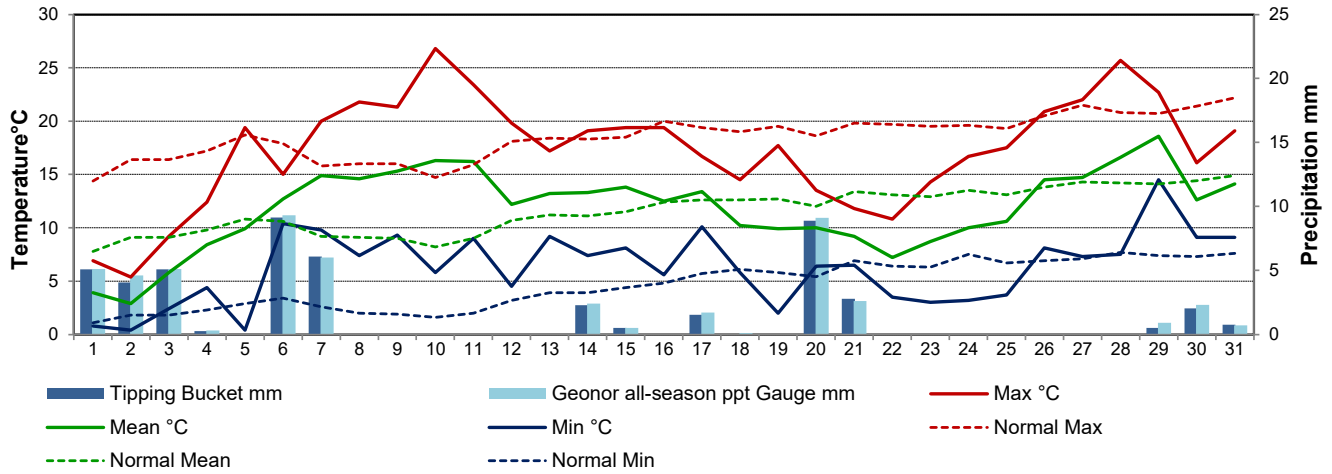


Agriculture and Agri-Food Canada

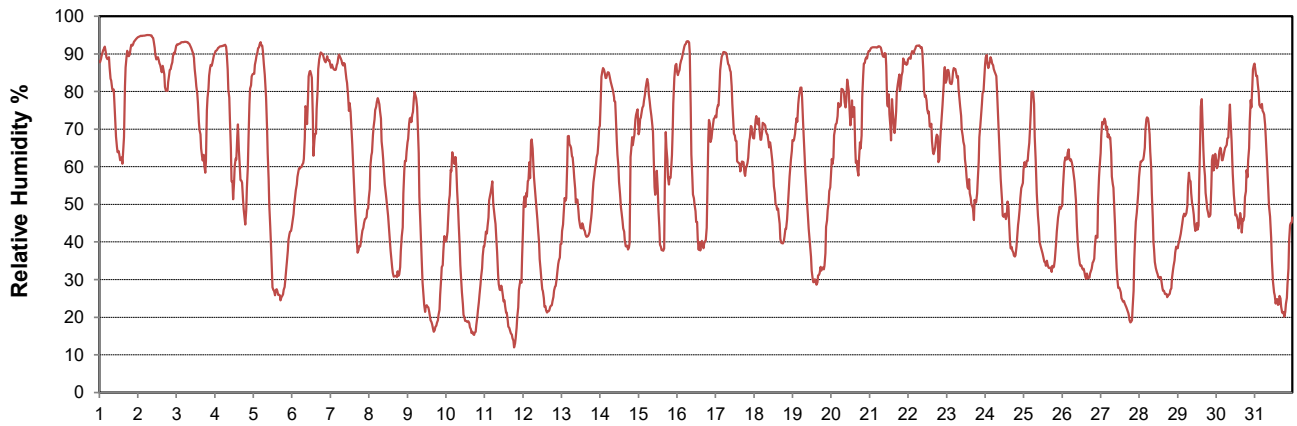
Agriculture et Agroalimentaire Canada



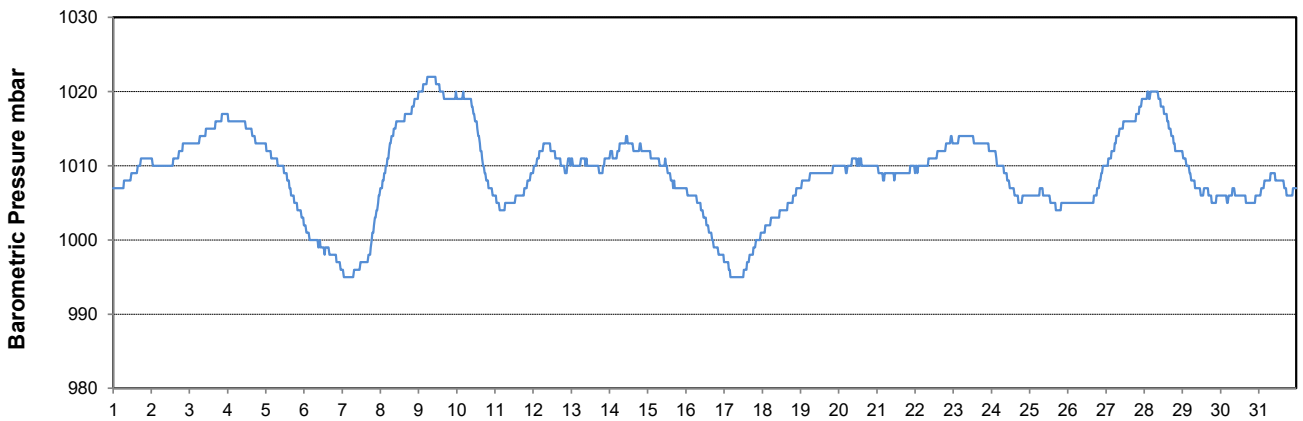
Temperature and Precipitation for May 2024



Relative Humidity for May 2024



Barometric Pressure Corrected to Sea Level for May 2024





SRC CLIMATE REFERENCE STATION DAILY DATA REPORT

SASKATOON STATION 4057180

52°09' N 106°36' W 497 m asl Estab. 1963

Preliminary MAY 2024

Day	10 m tower Wind Gust			Wind Speed (10 meters)	Soil Temperatures at 0900hrs (rounded to the nearest 0.5C)								Radiation				
	Max	Direction	Time	Daily Average	Surface	5 cm	10 cm	20 cm	50 cm	100 cm	150 cm	300 cm	Bright Sunshine	Possible	% Possible	Global	Diffuse
	km/h			km/h	°C	°C	°C	°C	°C	°C	°C	°C	hours	hours		MJ/m ²	MJ/m ²
1	43.1	NE	12:01	18.6	3.5	8.0	8.5	8.5	7.5	5.0	4.0	4.0	2.1	15.0	14.0	10.8	8.8
2	40.1	NNE	16:25	20.6	1.0	5.0	6.0	7.0	7.0	5.0	4.5	4.0	0.4	15.0	2.7	10.6	9.5
3	29.9	NNE	2:15	14.0	3.0	5.5	6.0	6.5	6.5	5.0	4.5	4.0	0.0	15.1	0.0	8.0	7.3
4	30.1	W	13:48	8.5	7.5	6.5	7.0	7.0	6.5	5.0	4.5	4.0	6.7	15.2	44.2	14.6	8.2
5	42.3	ESE	16:50	15.8	9.0	6.5	7.0	7.5	6.5	5.0	4.5	4.0	12.9	15.2	84.8	24.6	6.3
6	48.0	SE	13:27	23.4	9.5	9.5	9.5	9.5	7.0	5.5	4.5	4.0	0.0	15.3	0.0	3.8	3.4
7	50.3	ENE	15:12	28.0	10.0	9.5	9.5	9.0	7.5	5.5	4.5	4.0	2.8	15.3	18.3	10.6	8.1
8	32.9	N	12:19	14.5	10.5	9.5	9.5	10.0	8.0	5.5	5.0	4.0	12.1	15.4	78.7	24.8	4.5
9	58.2	WNN	13:04	20.8	14.0	11.5	11.5	11.5	8.5	5.5	5.0	4.0	13.5	15.4	87.5	27.2	3.3
10	44.1	W	17:43	13.3	15.0	10.0	10.5	11.5	9.5	6.0	5.0	4.5	13.3	15.5	85.9	26.2	4.0
11	59.4	WNN	16:30	20.0	19.0	12.5	12.5	12.5	10.0	6.0	5.0	4.5	13.3	15.5	85.6	23.1	8.3
12	29.5	ENE	9:16	10.1	10.5	10.5	11.5	11.5	10.5	6.5	5.5	4.5	10.7	15.6	68.6	23.5	6.4
13	45.5	SE	21:16	20.9	12.0	12.5	13.0	13.0	10.5	7.0	5.5	4.5	8.2	15.7	52.4	20.2	8.0
14	31.2	NNW	19:03	7.8	9.5	12.0	12.5	13.0	11.0	7.0	5.5	4.5	8.2	15.7	52.2	20.7	8.7
15	42.3	W	16:16	11.1	13.0	12.5	13.0	13.5	11.0	7.0	6.0	4.5	5.4	15.8	34.3	14.8	10.5
16	33.8	E	22:51	10.4	13.5	12.0	12.5	13.0	11.0	7.5	6.0	4.5	6.0	15.8	38.0	16.1	8.6
17	45.6	WNN	16:20	18.4	12.0	13.0	13.0	13.0	11.0	7.5	6.0	4.5	3.8	15.9	24.0	13.2	10.0
18	47.1	WNN	9:37	23.6	7.5	11.0	12.0	12.0	11.0	8.0	6.0	4.5	3.4	15.9	21.4	13.3	10.1
19	35.7	NW	13:48	12.1	10.5	9.0	10.0	11.0	10.5	8.0	6.5	4.5	10.6	15.9	66.5	23.1	7.6
20	20.5	ENE	20:00	7.5	8.5	11.0	11.5	12.0	10.5	8.0	6.5	5.0	4.0	16.0	25.0	13.6	7.9
21	35.1	NNE	22:07	13.2	7.5	11.0	11.5	11.5	10.5	8.0	6.5	5.0	1.2	16.0	7.5	10.6	8.6
22	33.5	NNE	5:45	16.7	6.0	10.5	11.0	11.0	10.5	8.0	6.5	5.0	0.7	16.1	4.4	7.7	6.8
23	27.7	ENE	18:09	8.9	6.5	9.0	9.5	10.0	10.0	8.0	6.5	5.0	5.2	16.1	32.3	17.3	12.4
24	37.0	SE	16:16	16.0	11.0	9.5	10.0	10.5	10.0	8.0	7.0	5.0	6.5	16.2	40.2	19.6	9.7
25	27.6	ESE	16:11	12.6	11.0	10.0	10.5	11.0	10.0	8.0	7.0	5.0	11.9	16.2	73.4	26.0	7.9
26	34.6	ESE	11:03	15.5	12.0	11.5	12.0	12.0	10.5	8.0	7.0	5.0	7.9	16.3	48.6	22.7	9.4
27	32.3	ESE	22:57	8.9	13.5	12.5	12.5	13.0	11.0	8.0	7.0	5.5	12.0	16.3	73.7	24.3	9.2
28	46.2	SE	17:27	21.4	16.0	13.0	13.5	14.0	11.5	8.0	7.0	5.5	13.9	16.3	85.2	26.1	7.9
29	42.3	SSE	3:08	17.8	16.5	15.5	15.5	15.0	12.0	8.5	7.0	5.5	8.7	16.4	53.2	17.4	8.1
30	49.3	WNN	17:35	24.4	9.0	14.0	14.5	14.5	12.5	8.5	7.0	5.5	2.6	16.4	15.9	12.1	9.2
31	64.3	W	12:00	27.7	13.0	12.0	12.5	13.0	12.0	9.0	7.5	5.5	10.3	16.4	62.7	23.9	8.0
Total													218.3	488.7	44.7	550.5	246.7
Mean				16.2	10.4	10.5	11.0	11.2	9.7	7.0	5.8	4.6	1991-2020 Normal				
Extreme	64.3	W	12:00		1971- 2000 Normal for Soil Temperatures								274.7	487.8	56.3	634.1	214.0
Date	31				10.3	10.8	11.3	9.3	6.4	4.8	3.4	No. of Bright Sunshine days = 29					

Note: Red numbers indicate manual calculation; Red cell indicate data not available

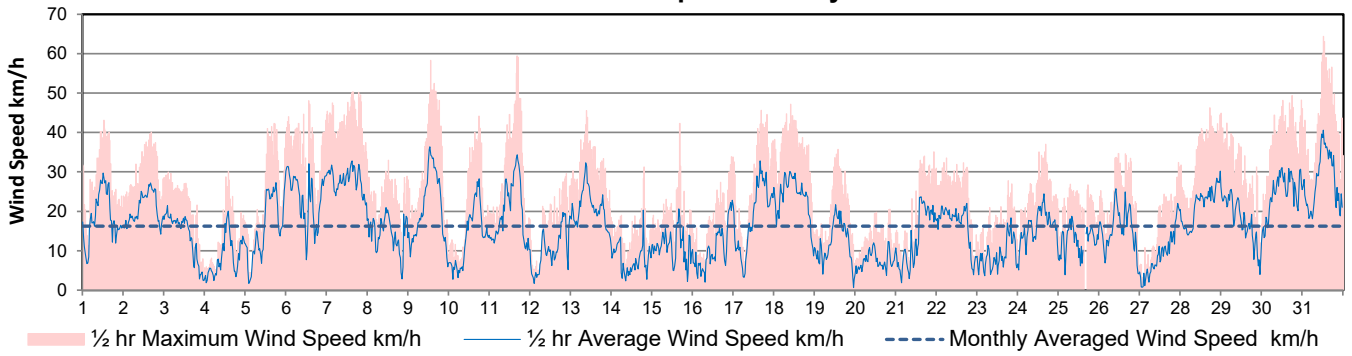
SRC proudly recognizes the following CRS supporters:



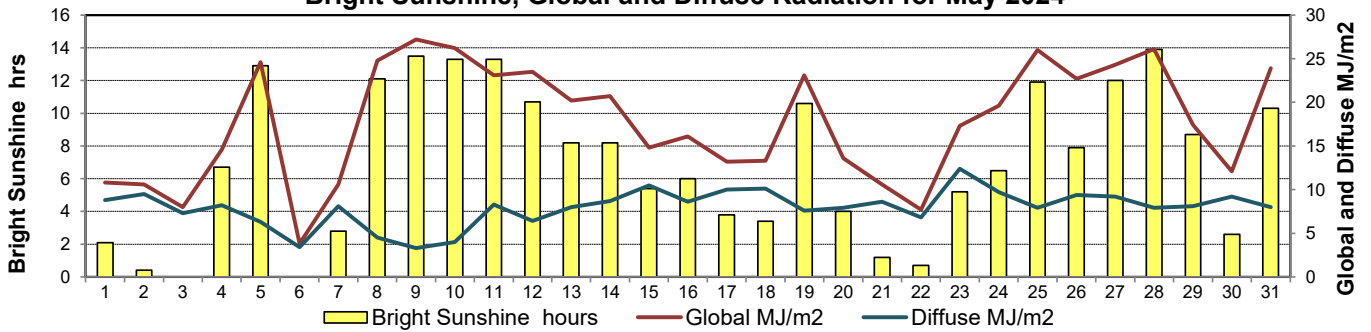
Agriculture and Agri-Food Canada / Agriculture et Agroalimentaire Canada



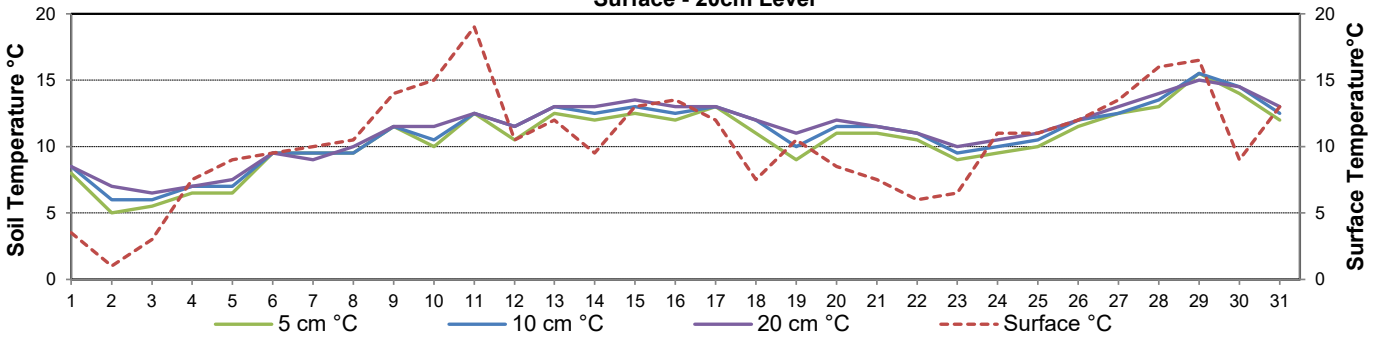
10 m tower Wind Speed for May 2024



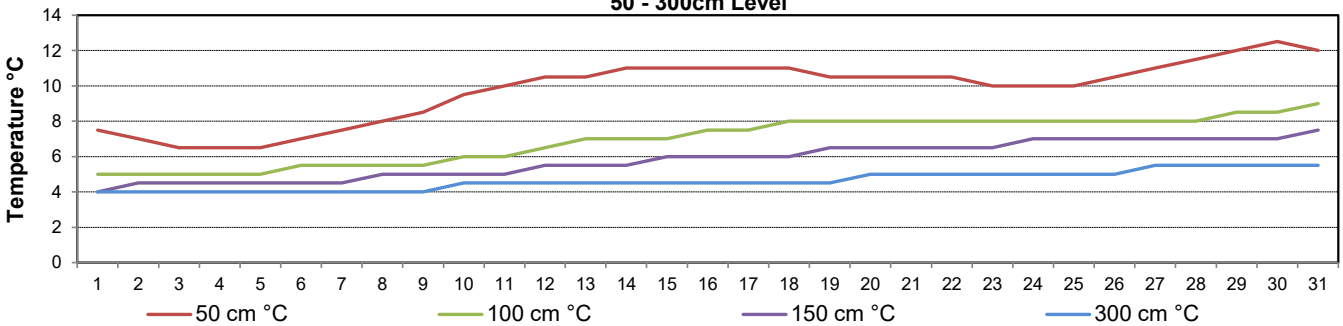
Bright Sunshine, Global and Diffuse Radiation for May 2024



**9 am Soil Temperatures for May 2024
Surface - 20cm Level**



**9 am Soil Temperatures for May 2024
50 - 300cm Level**





SRC CLIMATE REFERENCE STATION DAILY DATA REPORT

SASKATOON STATION 4057180

52°09' N 106°36' W 497 m asl Estab. 1963

Preliminary **MAY** 2024

Extreme Records for May

Max/Min Temperature °C			Precipitation - Monthly mm			Wind Monthly km/h			CRS Bright Sunshine - Monthly								
S'toon Area	Date	Site	S'toon CRS	Date	S'toon Area	Date	Site	S'toon CRS	Date	S'toon Airport	Date	S'toon CRS**	Date	Hours	Year	No. of Days	Year
37.2	27/1936	SE	35.0	30/1988	178.0	1977	SWT	145.3	1977	132	17 ^{SW} 1965	108	1991	389.3	1980	31	1966*
-12.8	06/1907	SE	-10.0	02/1967	0.0	02,'02,1988	SWT, K, SC	0.2	2002					153.0	1996	24	2006

**1975 forward * more than one year

Notable Events for CRS Saskatoon - May						Saskatoon Area Stations			Glossary	
Element	Type	Day	New Record	Old Record	Year				T	
Temperature	Highest Maximum Daily	10	26.8	26.7	1977	SM	NWMP	c. 1892-1901	Normal	Trace of precipitation
	Monthly max temp was 16th coolest					SE	Eby	1901-1941	Normal	30 year average beginning with the decade
Temperature	Monthly min temp was 9th warmest					US	Univ. of Sask.	1915-1964	SOG	Depth of snow-on-the-ground in cm
	Average temp was pretty much average					S	Saskatoon	1941-1942	na	not available
Temperature	Seasonally, the spring (March, April, May) max temp was cooler than normal, the spring min temp was warmer than normal and the average spring temp was pretty much normal (0.1C warmer than the 1991-2020 average but 0.1C cooler than the 1981-2010 average)					SA	Saskatoon A	1942 -	Degree-days	
						NRC	Nat. Res. Council	1952-1966	Tm	Mean Temperature
Precipitation	May 2024 was the 15th wettest month in the last 61 years					SRC	Sask. Res. Council	1963-	Growing	(Tm-5°C); if Tm ≤ 5°C then GDD = 0
	Spring 2024 was the 14th wettest spring in the last 61 years					SWT	S'toon Water Treatment Plant	1974 -	Heating	(18°C-Tm); if Tm ≤ 18°C then HDD = 0
Precipitation	Five months in a row with above normal precipitation amounts (Jan to May). The last time this happened was in 2015 (July to Nov)					SC	S'toon Central Ave	1974-1989	Cooling	(Tm-18°C); if Tm ≥ 18°C then CDD = 0
						S1	Saskatoon 1	1976-1978	Extreme Cooling	(Tm-24°C); if Tm ≥ 24°C then CDD = 0
Bright Sunshine	Spring 2024 had 81 days of bright sunshine which was the fifth lowest in the last 59 years					S2	Saskatoon 2	1977-1990		
						K	S'toon Kernen Farm	1993-2004		
						KCS	S'toon Kernen Farm CS	1996-		
						RCS	Environment Canada	2008-		
						SF	Sutherland Forestry	1943-1970		

SRC proudly recognizes the following CRS supporters:





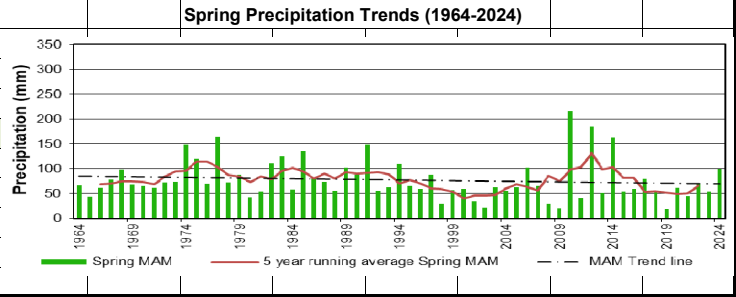
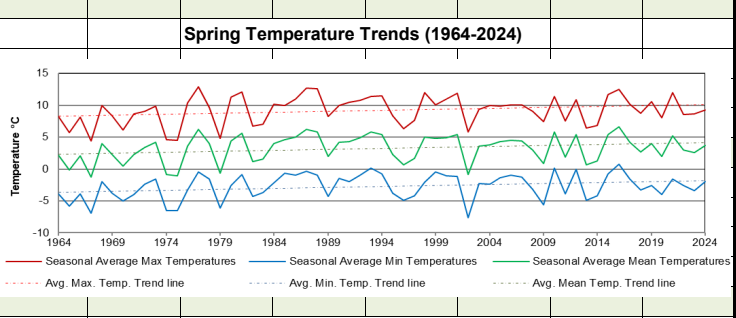
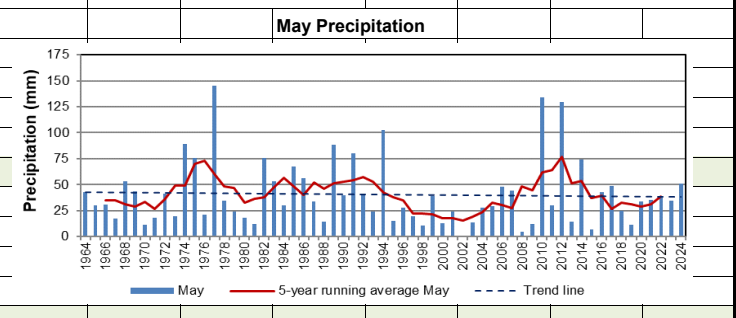
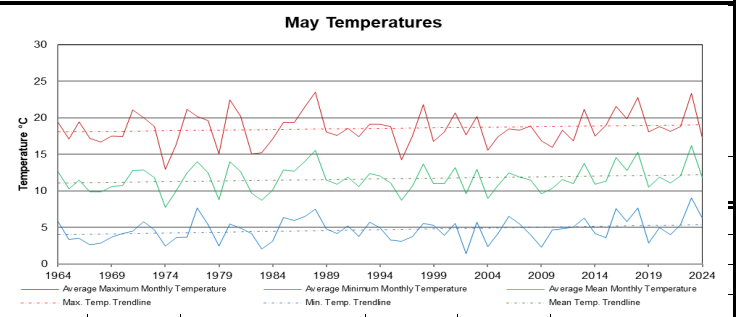
SRC CLIMATE REFERENCE STATION DAILY DATA REPORT

SASKATOON STATION 4057180

52°09' N 106°36' W 497 m asl Estab. 1963

Preliminary **MAY** **2024**

Day	2 meter Wind Speed			Soil Moisture at 0900 hrs (rounded to the 0.5%)		
	Daily Average	Max ½ hr Avg	½ hr Extreme Max	10 cm	20 cm	50 cm
	km/h	km/h	km/h	% by volume (soil type is Loam (45.5% Sand, 41.1% Silt, 13.3% Clay))		
1	14.0	21.4	32.1	13.5	16.0	9.5
2	14.0	18.9	30.4	19.0	16.0	9.0
3	9.0	14.7	22.9	22.5	16.0	9.5
4	6.0	16.2	27.5	21.5	16.0	9.0
5	11.0	21.3	37.3	19.5	16.0	9.0
6	18.0	24.1	40.2	17.0	16.5	9.0
7	21.0	24.2	39.1	28.0	16.5	8.5
8	11.0	15.3	25.2	22.5	20.5	9.5
9	15.0	26.5	41.9	19.5	20.5	9.0
10	10.0	21.0	35.0	17.0	19.5	9.5
11	14.0	25.2	43.7	16.0	19.5	9.0
12	8.0	14.7	22.9	15.0	19.0	9.5
13	16.0	24.9	39.1	14.0	18.5	9.5
14	6.0	14.5	24.1	13.5	17.5	9.5
15	8.0	15.1	29.3	13.0	17.0	9.5
16	7.0	16.6	27.0	12.5	17.0	9.0
17	13.0	23.8	35.6	12.0	16.5	10.0
18	17.0	21.9	34.4	11.5	15.5	9.0
19	9.0	17.0	28.1	11.0	14.5	10.0
20	5.0	9.8	18.9	10.5	14.0	10.0
21	9.0	16.4	25.2	15.0	13.5	10.0
22	12.0	16.1	25.2	15.5	13.5	9.0
23	7.0	13.5	21.2	14.5	13.0	9.5
24	12.0	18.8	29.3	14.0	13.0	9.5
25	10.0	13.7	22.9	12.5	12.5	9.5
26	11.0	19.2	29.3	11.5	13.0	9.0
27	7.0	16.3	25.2	10.5	12.0	10.0
28	14.0	19.5	36.8	9.0	11.5	10.0
29	12.0	17.0	32.7	8.0	11.0	9.5
30	18.0	23.2	40.2	7.5	11.0	9.5
31	20.0	29.0	46.0	6.5	10.5	9.5
Total						
Mean				15	15	9.4
Extreme	21.0	29.0	46.0	28	20.5	10
Date	7	31	31	7	8	17

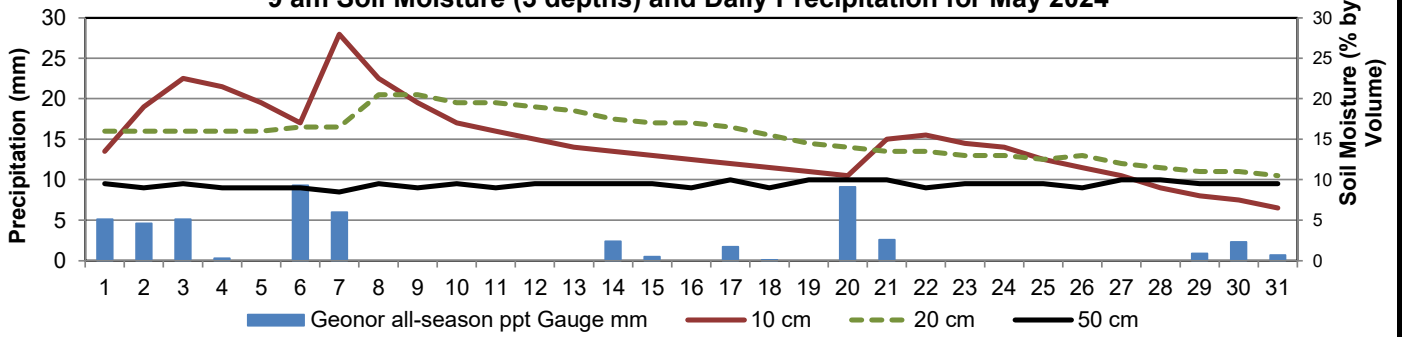


Note: Red numbers indicate manual calculation; Red cell indicate data not available

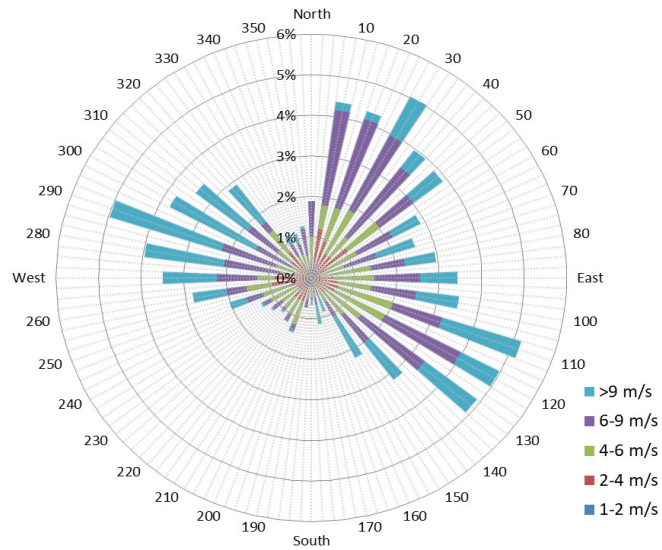
SRC proudly recognizes the following CRS supporters:



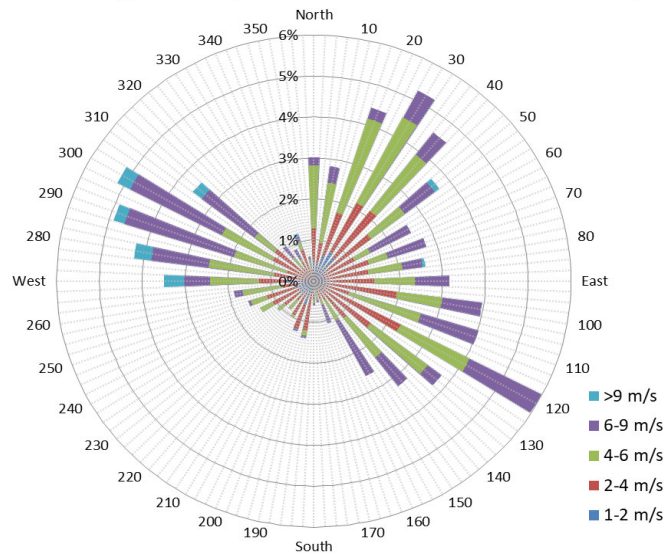
9 am Soil Moisture (3 depths) and Daily Precipitation for May 2024



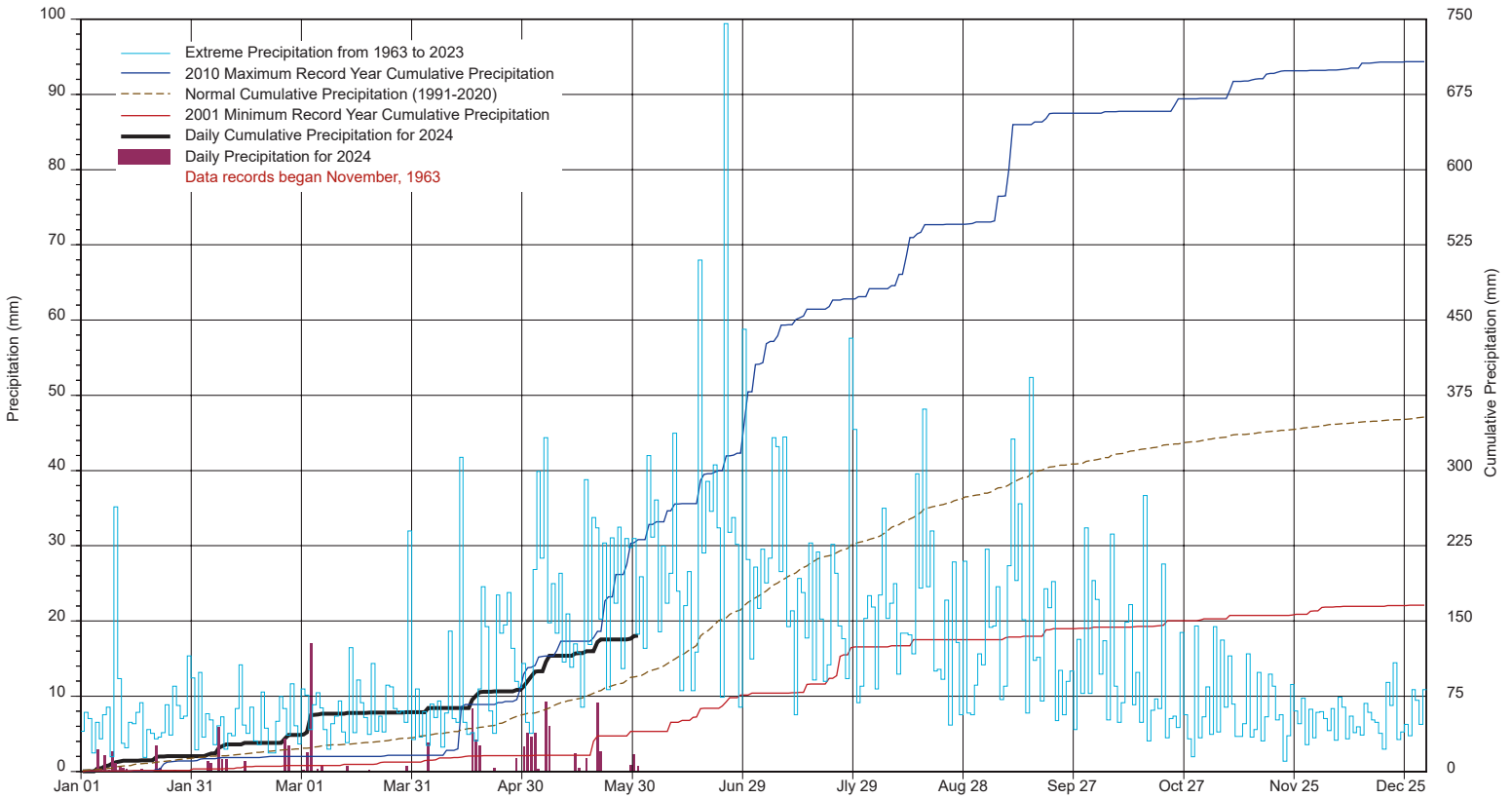
1/2 hr Maximum Wind Speed and Direction Saskatoon May 2024



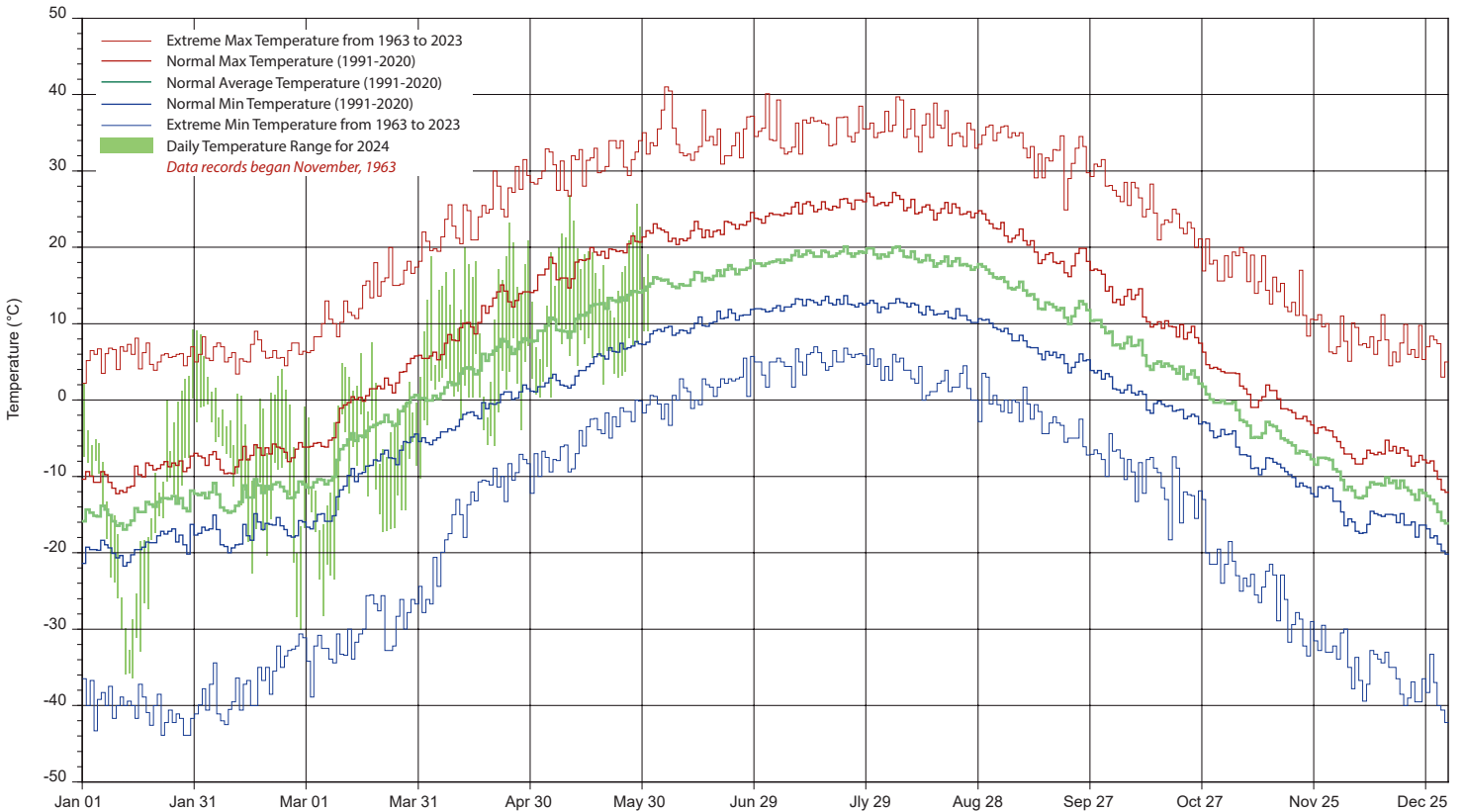
10 minute Average Wind Speed and Direction Saskatoon May 2024



SASKATCHEWAN RESEARCH COUNCIL SASKATOON CLIMATE REFERENCE STATION 2024 PRECIPITATION AND NORMALS



2024 TEMPERATURES AND NORMALS



SRC proudly recongnizes the following CRS supporters:



Agriculture and
Agri-Food Canada

Agriculture et
Agroalimentaire Canada

