



SRC CLIMATE REFERENCE STATION DAILY DATA REPORT

SASKATOON STATION 4057180

52°09' N 106°36' W 497 m asl Estab. 1963

Preliminary NOVEMBER 2021

Day	Temperature						Degree-days			Precipitation			Relative Humidity		Station Pressure (sea level)	
	Max	Normal Max	Min	Normal Min	Mean	Normal Mean	Growing	Heating	Cooling	Weighing Gauge	Notes	Snow-on-Ground 0900h	Max ½ hr Avg	Min ½ hr Avg	Max ½ hr Avg	Min ½ hr Avg
	°C	1991-2020	°C	1991-2020	°C	1991-2020	5°C base	18°C base	18°C base	mm		cm	%	%	mbar	mbar
1	2.5	3.8	-4.3	-3.8	-0.9	0.0	0.0	18.9	0.0	0.0		0	77	48	1029	1025
2	7.1	3.6	-7.5	-4.5	-0.2	-0.4	0.0	18.2	0.0	0.0		0	86	35	1025	1018
3	8.6	3.6	-7.7	-4.4	0.5	-0.4	0.0	17.5	0.0	0.0		0	90	38	1018	1011
4	12.9	3.6	-2.9	-4.0	5.0	-0.2	0.0	13.0	0.0	0.0		0	90	50	1011	999
5	13.3	3.5	2.6	-6.1	8.0	-1.3	3.0	10.0	0.0	0.0		0	83	48	1004	998
6	6.6	1.9	-2.1	-7.1	2.3	-2.6	0.0	15.7	0.0	0.0		0	93	55	1009	1004
7	9.5	1.5	-4.3	-7.1	2.6	-2.8	0.0	15.4	0.0	0.0		0	95	28	1011	1005
8	8.4	0.8	-5.4	-7.3	1.5	-3.3	0.0	16.5	0.0	0.0		0	75	30	1018	1011
9	7.6	-0.9	-8.2	-8.9	-0.3	-4.9	0.0	18.3	0.0	0.1		0	77	34	1019	1008
10	3.3	-0.9	-2.1	-8.8	0.6	-4.8	0.0	17.4	0.0	4.7		0	96	64	1013	1005
11	-2.0	0.0	-5.1	-9.7	-3.6	-4.9	0.0	21.6	0.0	1.9		7	96	79	1028	1014
12	-5.1	0.5	-9.4	-9.0	-7.3	-4.3	0.0	25.3	0.0	0.2		5	90	82	1029	1009
13	0.4	2.0	-12.8	-7.5	-6.2	-2.8	0.0	24.2	0.0	0.0		3	89	70	1013	1008
14	-0.1	1.3	-5.8	-7.6	-3.0	-3.2	0.0	21.0	0.0	0.0		3	87	74	1012	1006
15	1.5	1.3	-2.3	-8.1	-0.4	-3.4	0.0	18.4	0.0	1.6		3	96	88	1009	988
16	5.3	0.2	-3.3	-8.3	1.0	-4.0	0.0	17.0	0.0	4.6		0	96	72	1006	980
17	-3.2	-1.1	-10.1	-8.8	-6.7	-5.0	0.0	24.7	0.0	0.0		3	95	75	1025	980
18	-3.3	-1.1	-12.2	-9.3	-7.8	-5.2	0.0	25.8	0.0	0.0		3	91	66	1024	1006
19	-1.7	-1.3	-11.0	-9.7	-6.4	-5.5	0.0	24.4	0.0	0.0		3	90	69	1013	1006
20	-0.2	-1.6	-11.1	-10.1	-5.7	-5.9	0.0	23.7	0.0	0.0		3	84	65	1026	1009
21	-5.4	-2.4	-17.3	-11.3	-11.4	-6.9	0.0	29.4	0.0	0.0		3	83	68	1029	1014
22	3.6	-2.4	-6.4	-10.8	-1.4	-6.6	0.0	19.4	0.0	0.0		3	90	62	1014	997
23	0.9	-2.1	-12.1	-11.2	-5.6	-6.7	0.0	23.6	0.0	0.0		3	77	62	1016	998
24	-10.0	-2.7	-16.2	-11.4	-13.1	-7.1	0.0	31.1	0.0	0.0		3	78	67	1027	1017
25	-1.8	-3.2	-11.8	-12.2	-6.8	-7.7	0.0	24.8	0.0	0.0		3	90	72	1021	1003
26	5.0	-4.3	-6.2	-12.6	-0.6	-8.4	0.0	18.6	0.0	0.0		3	92	59	1012	1003
27	2.8	-3.6	-6.4	-11.3	-1.8	-7.5	0.0	19.8	0.0	0.0		3	76	46	1020	1013
28	1.3	-3.5	-5.3	-11.5	-2.0	-7.5	0.0	20.0	0.0	0.0		3	91	62	1016	1005
29	5.1	-3.9	-4.4	-11.2	0.4	-7.6	0.0	17.6	0.0	0.0		2	92	58	1018	1006
30	3.2	-4.0	-6.4	-11.5	-1.6	-7.8	0.0	19.6	0.0	0.0		3	89	67	1018	998
Total							3.0	610.9	0.0	13.1			Extreme / Date	Extreme / Date	Extreme / Date	Extreme / Date
Avg	2.5	-0.4	-7.3	-8.8	-2.4	-4.6	1991-2020 Normal			13.8	1991-2020 Normal					
Extreme	13.3		-17.3				3.9	678.7	0.0	154.2	Cumulative		96	28	1029	980
Date	5		21							342.4	Cumulative Normal		10	7	1	16

Note: Red numbers indicate manual calculation; Red cell indicate data not available

SRC proudly recognizes the following CRS supporters:

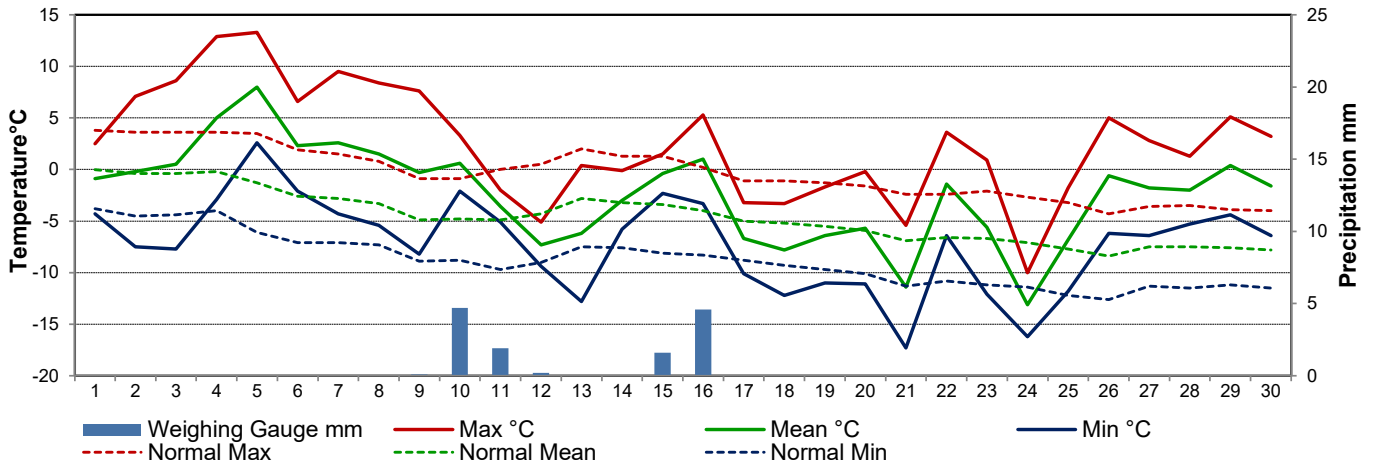


Agriculture and Agri-Food Canada

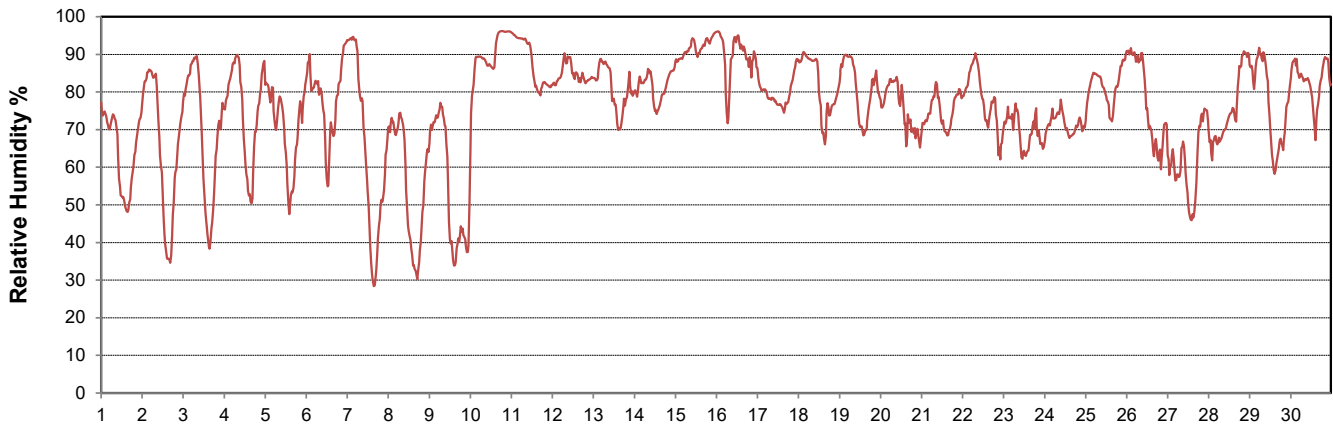
Agriculture et Agroalimentaire Canada



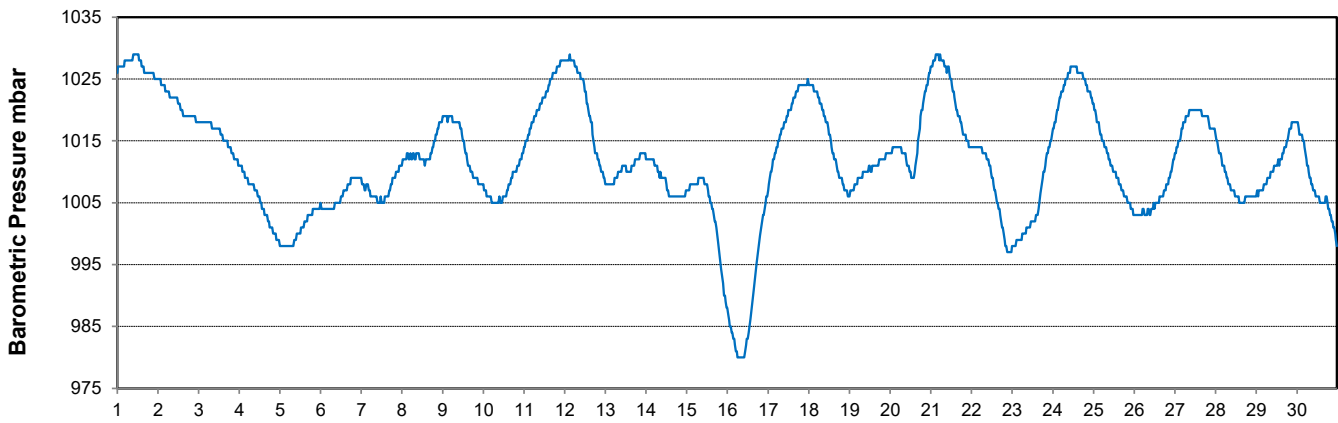
Temperature and Precipitation for November 2021



Relative Humidity for November 2021



Barometric Pressure Corrected to Sea Level for November 2021





SRC CLIMATE REFERENCE STATION DAILY DATA REPORT

SASKATOON STATION 4057180

52°09' N 106°36' W 497 m asl Estab. 1963

Preliminary **NOVEMBER 2021**

Day	Wind Gust (10 meter)			Wind Speed (10 meters)	Soil Temperatures at 0900hrs								Radiation				
	Max	Direction	Time		Daily Average	Surface	5 cm	10 cm	20 cm	50 cm	100 cm	150 cm	300 cm	Bright Sunshine	Possible	% Possible	Global
	km/h			km/h		°C	°C	°C	°C	°C	°C	°C	°C	hours	hours		MJ/m ²
1	19.2	SSW	15:51	6.3	-3.0	0.0	1.0	2.0	6.0	9.0	10.0	10.5	7.1	9.6	74.2	6.9	1.6
2	25.3	SSE	16:25	9.1	-7.0	-2.0	-0.5	2.0	5.5	9.0	10.0	10.5	9.2	9.5	96.7	7.8	1.8
3	17.3	SSW	13:30	6.6	-7.5	-3.0	-1.5	1.0	5.0	9.0	10.0	10.5	8.6	9.5	91.0	7.9	1.2
4	16.4	ESE	17:15	6.0	-3.0	-2.0	-1.0	1.0	4.5	8.5	9.5	10.5	8.0	9.4	85.2	6.8	1.4
5	45.1	NW	15:13	14.4	3.0	1.0	1.5	2.0	4.5	8.5	9.5	10.5	8.1	9.3	86.8	6.6	1.2
6	32.4	W	12:31	11.1	-1.5	0.5	1.5	3.0	5.0	8.0	9.5	10.5	7.4	9.3	79.8	6.2	1.6
7	37.8	SW	10:05	14.9	-1.0	0.0	1.0	2.0	5.0	8.0	9.5	10.5	8.5	9.2	92.2	6.8	1.1
8	39.4	SW	11:54	14.5	-3.5	-1.5	0.0	1.5	5.0	8.0	9.0	10.0	8.2	9.2	89.5	6.4	1.2
9	48.5	ESE	19:57	17.4	-8.0	-3.0	-1.0	1.0	4.5	8.0	9.0	10.0	6.9	9.1	75.8	5.2	2.4
10	50.6	ESE	1:13	21.9	0.5	0.5	1.0	1.5	4.0	8.0	9.0	10.0	0.0	9.0	0.0	1.0	1.0
11	32.5	NNE	1:42	17.5	-4.0	1.0	1.5	2.0	4.0	7.5	9.0	10.0	0.0	9.0	0.0	3.3	3.3
12	51.9	SE	0:00	18.1	-8.5	1.0	1.5	2.0	4.5	7.5	8.5	10.0	0.0	8.9	0.0	2.8	2.8
13	28.8	SE	17:14	8.5	-11.0	0.5	1.0	2.0	4.5	7.5	8.5	10.0	5.2	8.9	58.6	5.1	3.0
14	18.9	SE	18:55	7.0	-7.0	0.0	0.5	1.5	4.0	7.5	8.5	10.0	0.0	8.8	0.0	2.5	2.5
15	57.7	SE	22:39	14.6	-1.0	0.5	1.0	1.5	4.0	7.5	8.5	10.0	0.0	8.8	0.0	2.5	2.4
16	64.6	NW	12:51	32.2	2.0	1.0	1.0	2.0	4.0	7.0	8.5	9.5	0.0	8.7	0.0	0.9	0.9
17	64.2	NW	1:09	28.2	-6.5	0.5	1.5	2.0	4.0	7.0	8.5	9.5	0.0	8.7	0.0	2.5	2.5
18	36.8	SSE	15:45	13.5	-12.0	0.5	1.0	2.0	4.0	7.0	8.0	9.5	2.6	8.6	30.2	4.3	4.0
19	26.5	WSW	23:00	10.3	-10.5	0.5	1.0	1.5	4.0	7.0	8.0	9.5	7.8	8.6	91.0	6.3	5.0
20	50.4	N	18:12	19.2	-7.5	0.0	0.5	1.5	4.0	7.0	8.0	9.5	4.4	8.5	51.6	4.3	4.0
21	28.1	SSW	14:45	11.5	-18.0	-0.5	0.5	1.5	4.0	7.0	8.0	9.5	1.1	8.5	13.0	3.0	2.8
22	25.0	WSW	21:55	10.7	-6.0	-1.5	-1.0	0.5	4.0	7.0	8.0	9.5	0.0	8.4	0.0	2.6	2.5
23	49.5	WNW	16:16	18.4	-5.5	-1.5	-0.5	0.5	3.5	6.5	8.0	9.5	4.6	8.4	54.8	3.4	3.1
24	32.1	NNW	0:19	13.1	-15.5	-3.0	-2.0	0.0	3.5	6.5	8.0	9.0	0.3	8.3	3.6	2.6	2.6
25	26.7	SSE	10:00	11.1	-11.0	-4.5	-3.5	-1.0	3.0	6.5	7.5	9.0	2.1	8.3	25.3	2.6	2.5
26	36.5	NW	23:18	8.5	-6.0	-3.5	-3.0	-1.5	2.5	6.5	7.5	9.0	0.5	8.3	6.1	2.7	2.6
27	34.2	NW	0:09	12.8	-7.0	-2.0	-1.5	-0.5	2.5	6.0	7.5	9.0	7.8	8.2	94.9	4.4	4.3
28	37.5	ESE	4:26	14.6	-4.0	-3.0	-2.0	-1.0	2.5	6.0	7.5	9.0	2.1	8.2	25.7	2.8	2.7
29	26.4	WNW	15:00	11.6	-3.0	-2.5	-2.0	-1.0	2.5	6.0	7.5	9.0	6.3	8.1	77.4	4.0	3.9
30	38.8	ESE	8:04	13.1	-3.0	-2.5	-2.0	-0.5	2.5	6.0	7.0	9.0	6.0	8.1	74.1	3.6	3.6
Total													122.8	263.4	46.6	127.8	75.5
Mean				13.9	-5.9	-1.0	-0.2	1.1	4.0	7.4	8.5	9.8	1991-2020 Normal				
Extreme	64.6	NW	12:51		1971- 2000 Normal for Soil Temperatures								97.4	270.2	36.0	118.5	60.8
Date	16				-2.2	-1.7	-0.5	3.0	5.6	6.8	8.1	No. of Bright Sunshine days = 22					

Note: Red numbers indicate manual calculation; Red cell indicate data not available

SRC proudly recognizes the following CRS supporters:

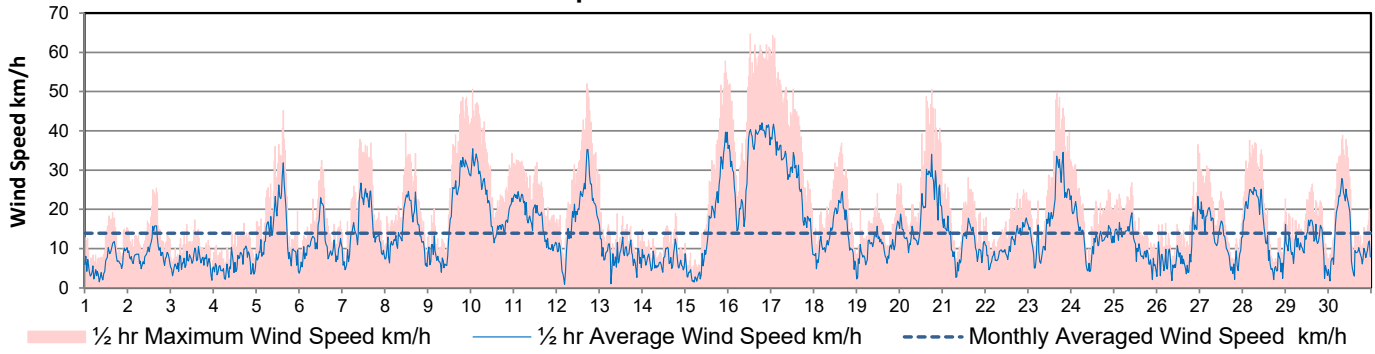


Agriculture and Agri-Food Canada

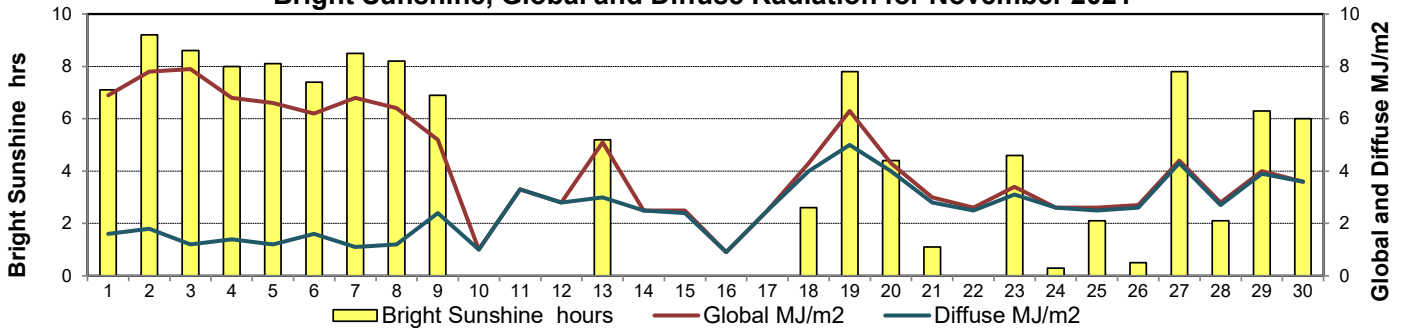
Agriculture et Agroalimentaire Canada



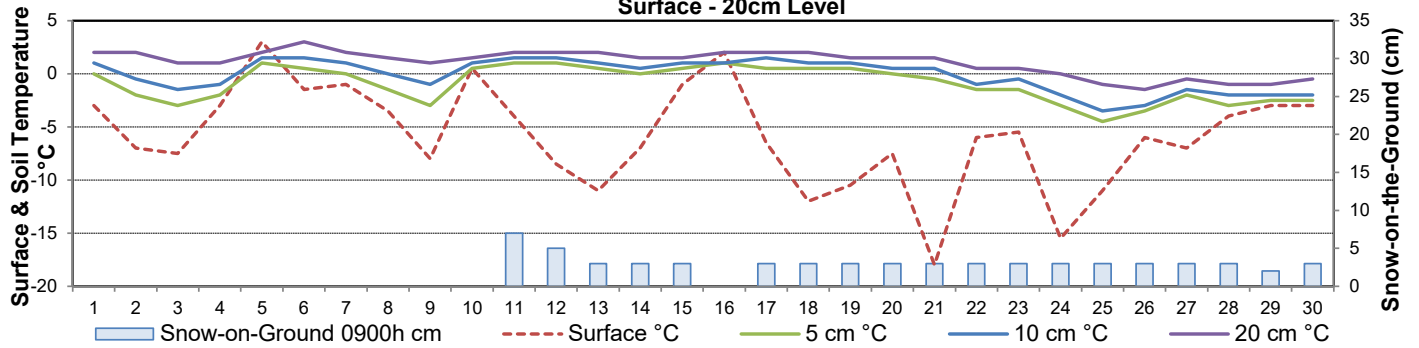
Wind Speed for November 2021



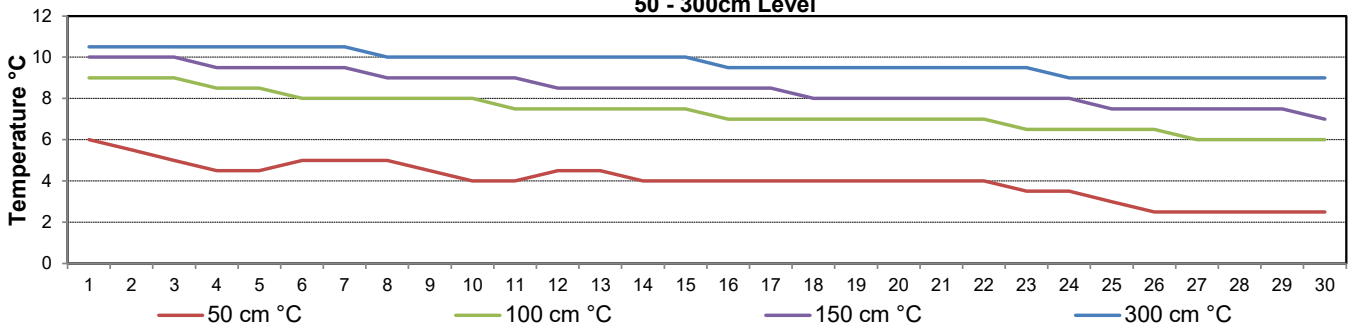
Bright Sunshine, Global and Diffuse Radiation for November 2021



Soil Temperatures for November 2021
Surface - 20cm Level



Soil Temperatures for November 2021
50 - 300cm Level





SRC CLIMATE REFERENCE STATION DAILY DATA REPORT

SASKATOON STATION 4057180

52°09' N 106°36' W 497 m asl Estab. 1963

Preliminary NOVEMBER 2021

Extreme Records for November

Max/Min Temperature °C			Precipitation - Monthly mm					Wind Monthly km/h				CRS Bright Sunshine - Monthly					
S'toon Area	Date	Site	S'toon CRS	Date	S'toon Area	Date	Site	S'toon CRS	Date	S'toon Airport	Date	S'toon CRS**	Date	Hours	Year	No. of Days	Year
21.7	03/1903	SE	20.0	06/2016	57.3	1940	SE	48.2	1973	100 ^w	17/1976	101	1976	188.5	1976	30	1976
-39.4	30/1893	SM	-33.5	24/1985	0.0	2002*	SWT*	0.4	2009					37.2	1972	10	1972

**1975 forward * more than one year

Notable Events for CRS Saskatoon - November						Saskatoon Area Stations			Glossary		
Element	Type	Day	New Record	Old Record	Year (day)	SM	NWMP	c.	1892-1901	T	Trace of precipitation
<p>Fall 2021 (September, October, November) 5th driest fall in the last 58 years 3rd warmest fall in the last 58 years</p>	SE	Eby			1901-1941	US	Univ. of Sask.	1915-1964		Normal	30 year average beginning with the decade
	S	Saskatoon			1941-1942	S	Saskatoon	1941-1942		SOG	Depth of snow-on-the-ground in cm
	SA	Saskatoon A			1942 -					na	not available
	NRC	Nat. Res. Council			1952-1966					Degree-days	
	SRC	Sask. Res. Council			1963-	Tm	Mean Temperature			Growing	(Tm-5°C); if Tm ≤ 5°C then GDD = 0
	SWT	S'toon Water Treatment Plant			1974 -	Heating	(18°C-Tm); if Tm ≤ 18°C then HDD = 0			Cooling	(Tm-18°C); if Tm ≥ 18°C then CDD = 0
	SC	S'toon Central Ave			1974-1989	Extreme Cooling	(Tm-24°C); if Tm ≥ 24°C then CDD = 0			Diffuse radiation shield was mis-aligned from November 19 - November 30	
	S1	Saskatoon 1			1976-1978						
	S2	Saskatoon 2			1977-1990						
	K	S'toon Kernen Farm			1993-2004						
	KCS	S'toon Kernen Farm CS			1996-						
	RCS	Environment Canada			2008-						
	SF	Sutherland Forestry			1943-1970						

SRC proudly recognizes the following CRS supporters:





SRC CLIMATE REFERENCE STATION DAILY DATA REPORT

SASKATOON STATION 4057180

52°09' N 106°36' W 497 m asl Estab. 1963

Preliminary November 2021

Day	2 meter Wind Speed			Soil Moisture at 0900 hrs (rounded to the 0.5%)														
	Daily Average	Max ½ hr Avg	½ hr Extreme Max	10 cm	20 cm	50 cm												
	km/h	km/h	km/h	% by volume (soil type is Loam (45.5% Sand, 41.1% Silt, 13.3% Clay))														
1	5.0	9.5	16	8.0	7.0	8.0												
2	6.0	10.4	18	7.5	7.0	8.0												
3	4.0	8.9	15	8.0	7.0	8.0												
4	4.0	8.6	14	8.0	7.0	8.0												
5	10.0	23.6	34	8.5	6.5	7.5												
6	8.0	17.3	26	8.5	6.5	7.5												
7	11.0	20.7	32	8.0	6.5	8.0												
8	10.0	19.1	29	7.5	7.0	7.5												
9	13.0	25.4	43	8.0	7.0	7.5												
10	17.0	27.0	41	8.0	6.5	7.5												
11	13.0	18.3	28	8.5	6.5	7.5												
12	14.0	27.6	45	8.5	6.5	8.0												
13	7.0	12.8	22	8.0	7.0	7.5												
14	5.0	9.8	15	8.0	6.5	7.5												
15	11.0	29.2	45	8.0	6.5	7.5												
16	24.0	32.6	53	8.5	7.0	7.5												
17	22.0	32.5	50	8.0	7.0	8.0												
18	10.0	17.2	30	8.0	7.0	8.0												
19	8.0	13.7	22	8.5	6.5	8.0												
20	15.0	26.4	42	8.0	6.5	8.0												
21	8.0	14.3	24	7.5	7.0	7.0												
22	7.0	13.3	21	8.0	6.5	7.5												
23	14.0	26.1	41	8.5	7.0	7.5												
24	10.0	18.3	26	7.5	6.5	7.5												
25	7.0	13.9	23	7.5	6.5	7.5												
26	6.0	17.8	29	7.5	6.5	7.0												
27	10.0	17.0	26	8.0	6.5	7.0												
28	11.0	19.2	32	8.0	6.5	7.0												
29	9.0	13.4	23	8.0	6.5	7.0												
30	10.0	22.2	32	8.5	6.5	7.0												
Total																		
Mean				8	7	7.6												
Extreme	24.0	32.6	52.9	8.5	7	8												
Date	16	16	16	5	1	1												

Note: Red numbers indicate manual calculation; Red cell indicate data not available

SRC proudly recognizes the following CRS supporters:

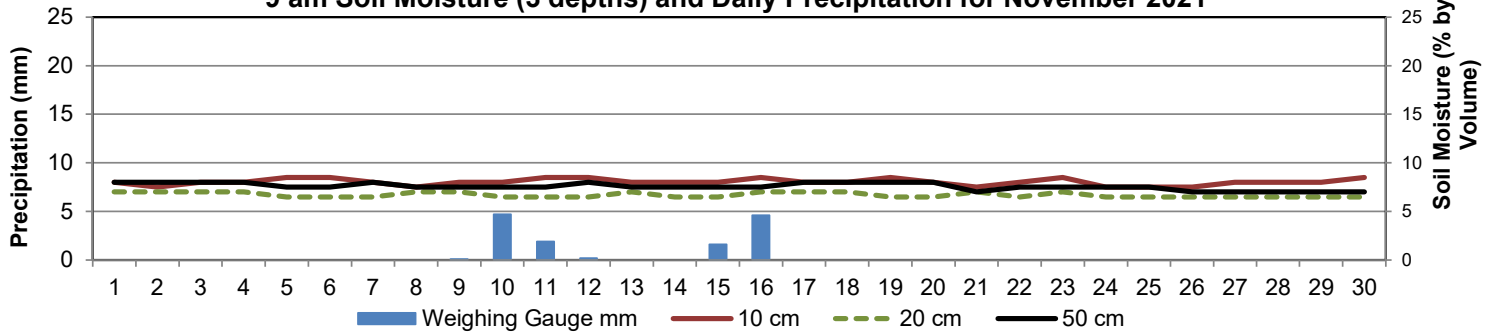


Agriculture and Agri-Food Canada

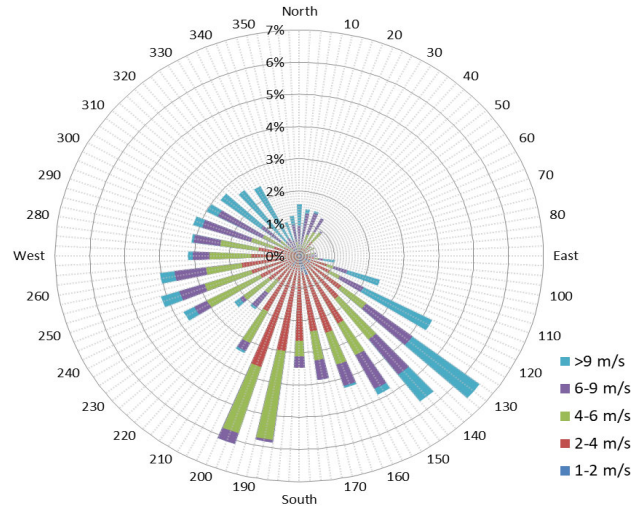
Agriculture et Agroalimentaire Canada



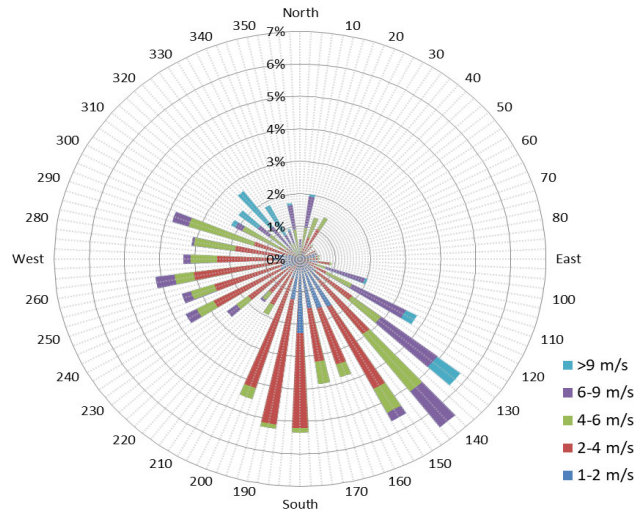
9 am Soil Moisture (3 depths) and Daily Precipitation for November 2021



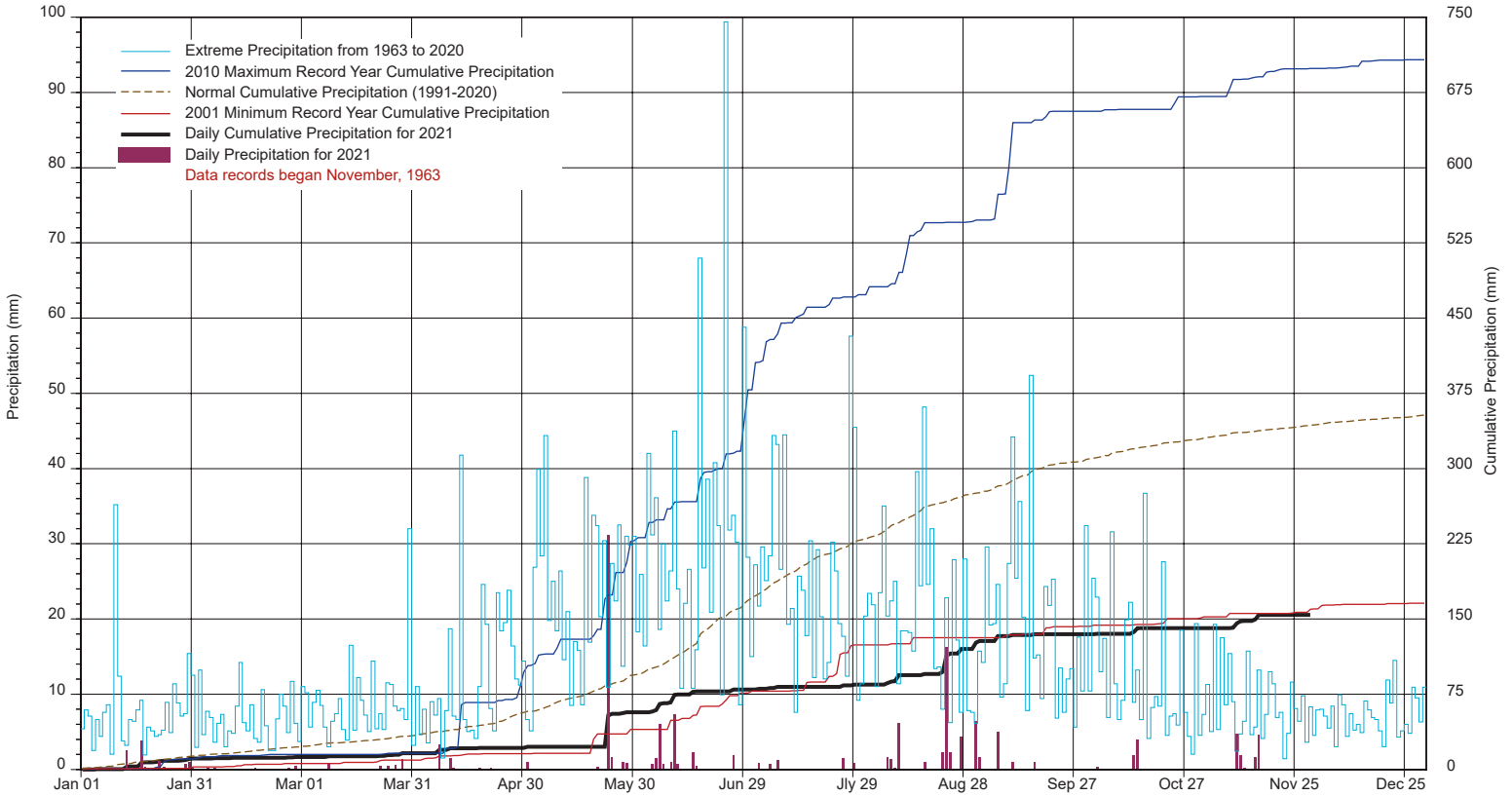
1/2 hr Maximum Wind Speed and Direction Saskatoon November 2021



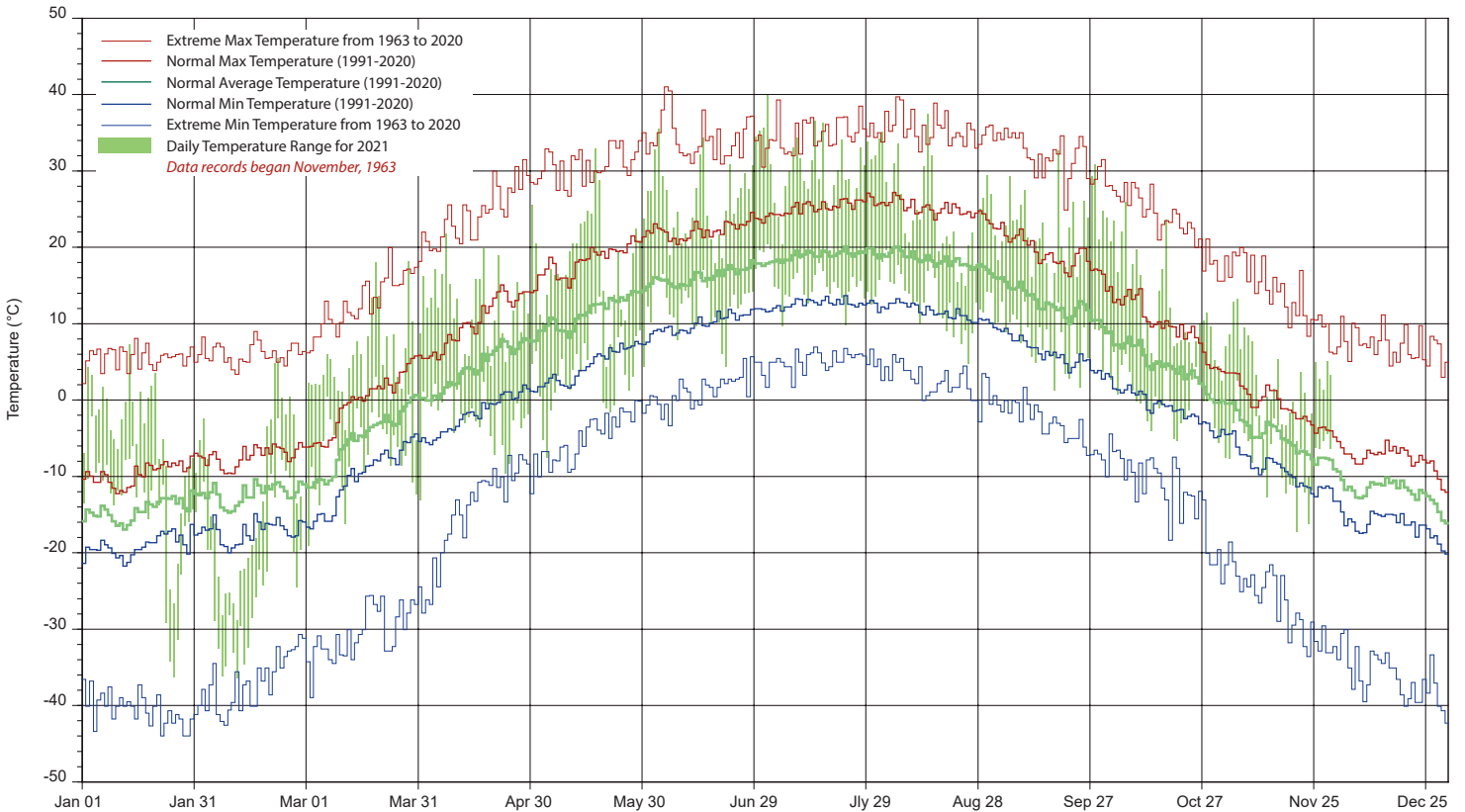
10 minute Average Wind Speed and Direction Saskatoon November 2021



SASKATCHEWAN RESEARCH COUNCIL SASKATOON CLIMATE REFERENCE STATION 2021 PRECIPITATION AND NORMALS



2021 TEMPERATURES AND NORMALS



SRC proudly recongnizes the following CRS supporters:

