



SRC CLIMATE REFERENCE STATION DAILY DATA REPORT

SASKATOON STATION 4057180

Saskatchewan 52°09' N 106°36' W 497 m asl Estab. 1963

Preliminary SEPTEMBER 2021

Day	Temperature						Degree-days			Precipitation			Relative Humidity		Station Pressure (sea level)	
	Max	Normal Max	Min	Normal Min	Mean	Normal Mean	Growing	Heating	Cooling	Weighing Gauge	Tipping Bucket	Notes	Max ½ hr Avg	Min ½ hr Avg	Max ½ hr Avg	Min ½ hr Avg
	°C	1991-2020	°C	1991-2020	°C	1991-2020	5°C base	18°C base	18°C base	mm	mm		%	%	mbar	mbar
1	21.5	22.5	10.1	9.5	15.8	16.1	10.8	2.2	0.0	1.6	1.6	t-storm	95	33	1008	1004
2	18.3	22.4	10.2	9.3	14.3	15.9	9.3	3.7	0.0	0.0	0.0		86	56	1014	1008
3	20.8	23.3	13.0	9.0	16.9	16.1	11.9	1.1	0.0	0.0	0.0		81	45	1015	1013
4	22.8	21.5	8.9	9.4	15.9	15.5	10.9	2.1	0.0	0.0	0.0		92	33	1016	1013
5	29.3	20.7	10.2	8.7	19.8	14.7	14.8	0.0	1.8	0.0	0.0		79	20	1013	1004
6	23.5	21.2	11.3	7.8	17.4	14.5	12.4	0.6	0.0	5.0	3.8		87	29	1012	1007
7	23.6	21.6	10.6	7.8	17.1	14.8	12.1	0.9	0.0	0.0	0.0		67	26	1018	1012
8	25.5	22.4	7.4	8.5	16.5	15.5	11.5	1.5	0.0	0.0	0.0		82	23	1020	1012
9	27.4	20.9	12.9	7.8	20.2	14.4	15.2	0.0	2.2	0.0	0.0		64	27	1012	1007
10	21.3	20.3	9.6	7.0	15.5	13.7	10.5	2.5	0.0	0.9	0.8		87	32	1017	1009
11	16.1	20.9	5.7	6.9	10.9	13.9	5.9	7.1	0.0	0.0	0.0		92	54	1019	1017
12	20.7	19.4	4.9	6.9	12.8	13.2	7.8	5.2	0.0	0.0	0.0		94	35	1019	1010
13	21.1	17.9	9.5	6.1	15.3	12.0	10.3	2.7	0.0	0.0	0.0		93	31	1012	1011
14	23.2	18.4	6.5	5.3	14.9	11.9	9.9	3.1	0.0	0.0	0.0		75	24	1014	1005
15	17.9	19.1	9.3	6.4	13.6	12.8	8.6	4.4	0.0	0.0	0.0		57	30	1004	997
16	12.3	19.3	5.7	5.9	9.0	12.6	4.0	9.0	0.0	1.0	0.6		82	45	1012	1003
17	16.6	18.1	1.2	6.3	8.9	12.2	3.9	9.1	0.0	0.0	0.0		85	29	1016	1003
18	32.7	17.9	12.8	5.6	22.8	11.8	17.8	0.0	4.8	0.0	0.0		47	11	1002	994
19	20.0	18.2	8.9	6.0	14.5	12.1	9.5	3.5	0.0	0.0	0.0		82	30	1010	996
20	17.4	16.7	3.5	4.8	10.5	10.8	5.5	7.5	0.0	0.0	0.0		87	34	1019	1010
21	22.5	16.2	2.8	3.6	12.7	10.0	7.7	5.3	0.0	0.0	0.0		83	18	1020	1014
22	26.0	17.6	10.1	4.3	18.1	11.0	13.1	0.0	0.1	0.0	0.0		52	24	1014	1005
23	16.1	19.2	6.0	5.0	11.1	12.1	6.1	6.9	0.0	0.0	0.0		74	19	1019	1008
24	19.0	19.9	1.7	6.1	10.4	13.0	5.4	7.6	0.0	0.0	0.0		64	18	1020	1008
25	26.0	19.9	9.5	5.2	17.8	12.6	12.8	0.2	0.0	0.0	0.0		55	22	1008	1005
26	23.8	18.2	5.5	5.3	14.7	11.8	9.7	3.3	0.0	0.0	0.0		79	26	1009	1001
27	29.3	17.0	10.2	3.9	19.8	10.4	14.8	0.0	1.8	0.0	0.0		62	16	1002	1001
28	30.9	17.2	9.3	3.6	20.1	10.5	15.1	0.0	2.1	0.0	0.0		77	14	1003	998
29	21.1	17.0	9.2	3.9	15.2	10.5	10.2	2.8	0.0	0.0	0.0		80	22	1018	1002
30	24.7	16.5	3.7	2.8	14.2	9.6	9.2	3.8	0.0	0.0	0.0		66	16	1019	1014
Total							306.7	96.1	12.8	8.5	6.8		Extreme / Date	Extreme / Date	Extreme / Date	Extreme / Date
Avg	22.4	19.4	8.0	6.3	15.2	12.9	1991-2020 Normal			33.4	1991-2020 Normal					
Extreme Date	32.7		1.2				238.0	163.6	9.6	135.0	Cumulative		95	11	1020	994
	18		17							308.2	Cumulative Normal		1	18	8	18

Note: Red numbers indicate manual calculation; Red cell indicate data not available

SRC proudly recognizes the following CRS supporters:

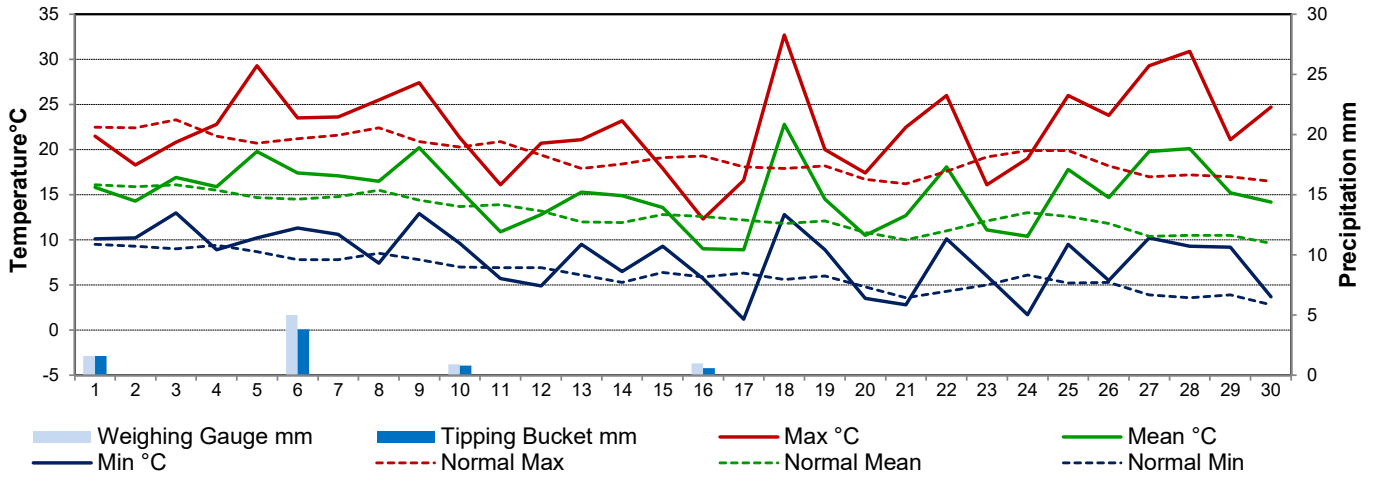


Agriculture and Agri-Food Canada

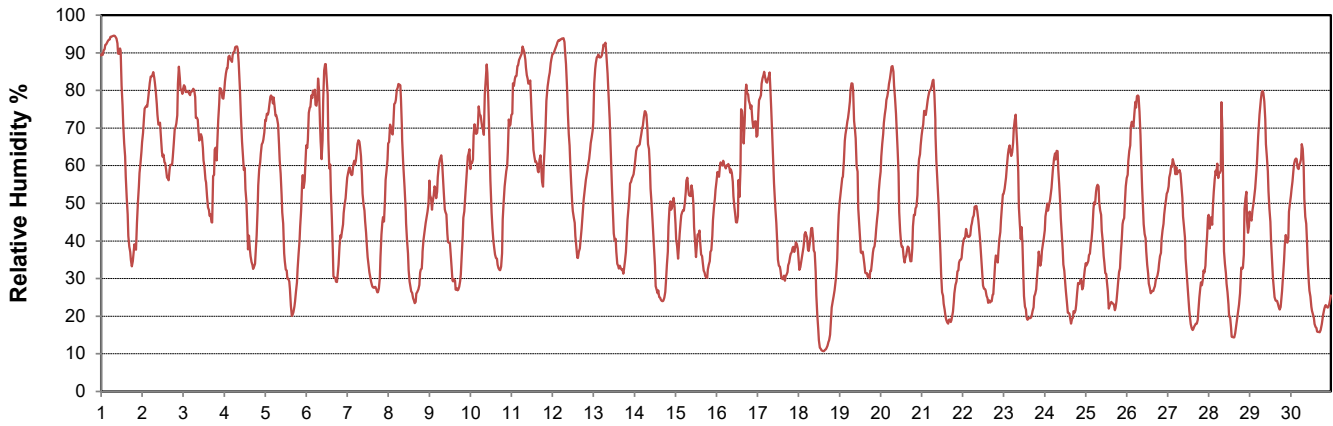
Agriculture et Agroalimentaire Canada



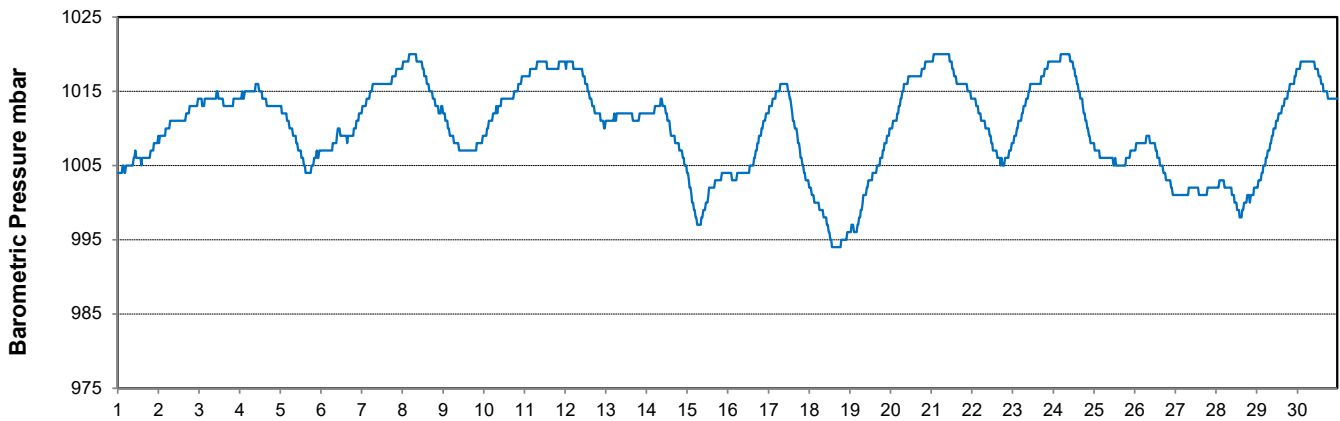
Temperature and Precipitation for September 2021



Relative Humidity for September 2021



Barometric Pressure Corrected to Sea Level for September 2021





SRC CLIMATE REFERENCE STATION DAILY DATA REPORT

SASKATOON STATION 4057180

Saskatchewan 52°09' N 106°36' W 497 m asl Estab. 1963

Preliminary **SEPTEMBER 2021**

Day	Wind Gust (10 meters)			Wind Speed (10 meters) Daily Average	Soil Temperatures at 0900hrs								Radiation				
	Max	Direction	Time		Surface	5 cm	10 cm	20 cm	50 cm	100 cm	150 cm	300 cm	Bright Sunshine	Possible	% Possible	Global	Diffuse
	km/h				°C	°C	°C	°C	°C	°C	°C	°C	hours	hours		MJ/m ²	MJ/m ²
1	41.0	WSW	21:53	12.7	12.0	15.0	15.5	16.5	16.5	15.0	13.5	11.5	7.4	13.6	54.5	13.6	4.5
2	53.4	WSW	12:03	23.9	12.5	13.0	14.0	15.5	16.5	15.0	13.5	11.5	1.7	13.5	12.6	9.4	6.1
3	37.1	WNW	14:56	16.1	14.0	14.0	14.5	15.0	15.5	15.0	13.5	11.5	5.3	13.4	39.4	11.9	6.4
4	23.8	NNW	14:55	6.6	12.5	12.5	13.5	15.0	15.5	15.0	13.5	11.5	10.7	13.4	80.0	17.7	4.1
5	32.9	SSE	12:18	14.5	15.5	13.5	14.5	15.5	15.5	14.5	13.5	11.5	11.0	13.3	82.6	16.6	5.0
6	45.7	WNW	16:32	12.7	15.5	14.5	15.0	16.0	15.5	14.5	13.5	11.5	6.0	13.3	45.3	10.7	3.5
7	55.2	NW	14:43	18.3	14.0	12.5	13.5	15.0	15.5	14.5	13.5	11.5	12.8	13.2	97.1	19.3	1.9
8	26.4	SE	20:29	8.1	13.0	11.5	12.5	14.5	15.5	14.5	13.5	11.5	9.9	13.1	75.5	17.3	2.6
9	37.0	NW	17:01	14.2	16.0	14.0	15.0	15.5	15.0	14.5	13.5	11.5	11.6	13.1	88.9	15.7	4.7
10	44.5	NW	14:49	13.0	13.0	15.0	15.5	16.0	15.5	14.5	13.5	11.5	8.9	13.0	68.6	15.9	2.4
11	15.6	SE	13:18	4.5	9.0	12.0	13.0	15.0	15.5	14.5	13.5	11.5	0.9	12.9	7.0	4.9	3.7
12	31.2	S	13:46	10.2	10.5	10.0	11.0	13.0	15.0	14.5	13.5	11.5	8.6	12.9	66.9	15.0	4.8
13	45.9	WNW	18:02	16.7	11.5	13.0	14.0	14.5	14.5	14.5	13.5	11.5	11.5	12.8	90.0	17.6	3.4
14	44.7	WSW	15:09	11.7	10.0	11.5	12.5	14.0	14.5	14.0	13.5	11.5	10.5	12.7	82.5	15.4	4.7
15	55.3	WNW	11:11	22.5	14.0	13.0	14.0	14.5	14.5	14.0	13.5	11.5	8.5	12.7	67.2	12.9	6.9
16	66.4	WNW	14:18	28.0	8.0	11.0	12.0	13.5	14.5	14.0	13.0	11.5	3.0	12.6	23.8	8.3	5.7
17	44.0	WNW	0:08	18.0	5.0	8.0	9.5	11.5	14.0	14.0	13.0	11.5	8.4	12.5	67.1	13.3	5.0
18	58.4	WSW	16:36	19.8	15.5	11.0	11.5	12.0	13.5	14.0	13.0	11.5	8.0	12.5	64.3	13.8	4.9
19	38.6	NW	16:28	15.9	11.5	13.5	14.0	14.5	13.5	13.5	13.0	11.5	8.6	12.4	69.5	13.8	4.4
20	34.2	NW	12:49	13.1	7.0	11.0	12.5	14.0	14.0	13.5	13.0	11.5	10.2	12.3	82.8	13.8	3.0
21	42.3	SSW	13:57	12.6	7.5	9.5	11.0	12.5	14.0	13.5	13.0	11.5	11.2	12.3	91.4	15.6	2.1
22	29.0	SSW	8:35	12.2	12.5	11.5	12.0	13.0	13.5	13.5	13.0	11.5	8.5	12.2	69.8	12.9	4.2
23	60.8	WNW	10:18	21.7	12.0	12.5	13.5	14.0	13.5	13.5	13.0	11.5	10.0	12.1	82.5	15.0	2.5
24	36.4	NW	12:49	16.8	5.5	9.0	10.5	12.5	14.0	13.5	13.0	11.5	10.8	12.1	89.6	14.2	3.2
25	29.8	NW	15:27	9.5	12.5	11.5	12.0	13.0	13.5	13.5	13.0	11.5	10.6	12.0	88.5	12.8	3.3
26	42.4	SE	22:03	12.6	10.5	10.5	12.0	13.5	13.5	13.5	13.0	11.5	9.1	11.9	76.3	11.8	4.1
27	40.5	WSW	13:41	13.4	12.5	12.0	13.0	13.5	13.5	13.0	12.5	11.5	10.9	11.9	92.0	13.3	2.0
28	46.6	SSE	14:21	13.6	14.5	12.0	13.0	14.0	14.0	13.0	12.5	11.5	8.2	11.8	69.6	11.2	3.8
29	37.9	WNW	10:26	14.9	12.5	14.0	14.5	15.0	14.0	13.0	12.5	11.5	10.4	11.7	88.7	13.2	2.5
30	43.3	SSW	16:58	16.1	9.0	10.5	12.0	14.0	14.0	13.0	12.5	11.5	11.1	11.7	95.3	14.1	1.5
Total													264.3	378.5	69.8	411.0	116.9
Mean				14.8	11.6	12.1	13.0	14.2	14.6	14.0	13.2	11.5	1991-2020 Normal				
Extreme	66.4	WNW	14:18		1971- 2000 Normal for Soil Temperatures								214.7	378.9	56.7	373.1	120.9
Date	16				10.5	11.0	12.5	13.2	12.4	11.7	9.9	No. of Bright Sunshine days = 30					

Note: Red numbers indicate manual calculation Red cell indicate data not available

SRC proudly recognizes the following CRS supporters:

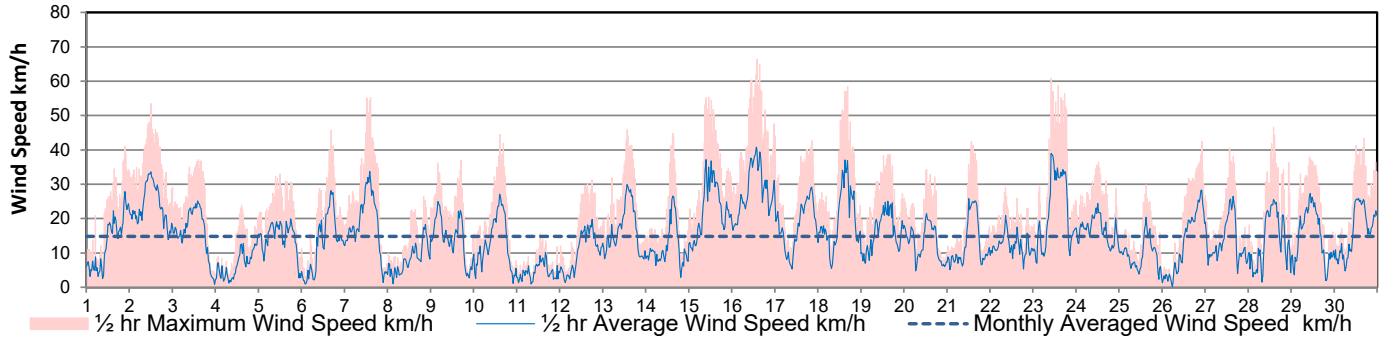


Agriculture and Agri-Food Canada

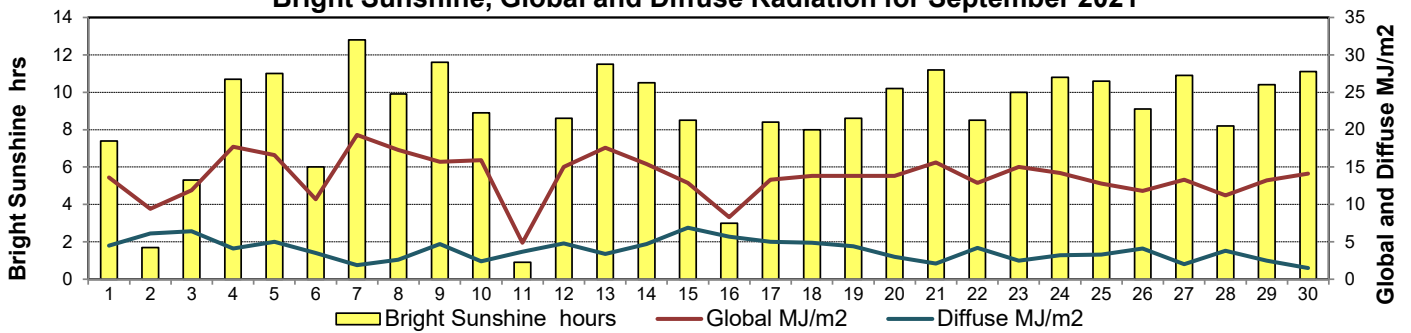
Agriculture et Agroalimentaire Canada



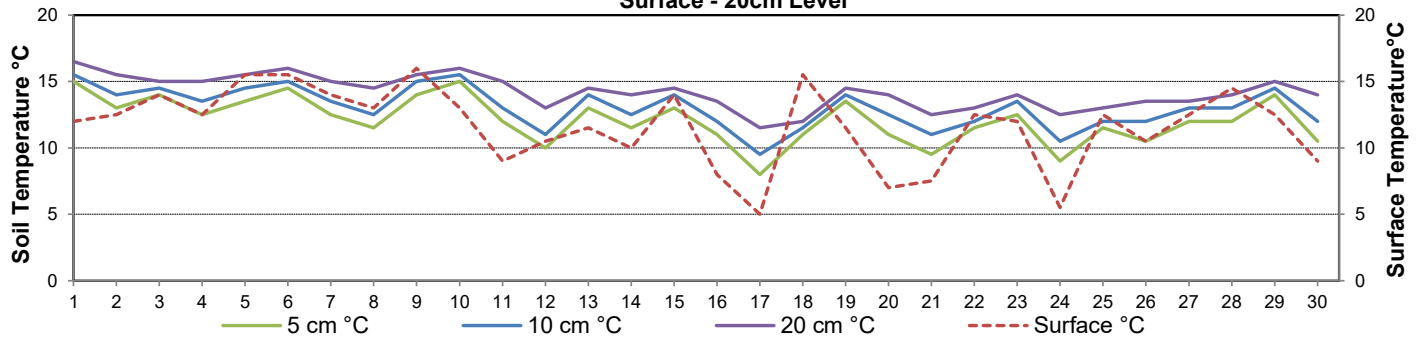
Wind Speed for September 2021



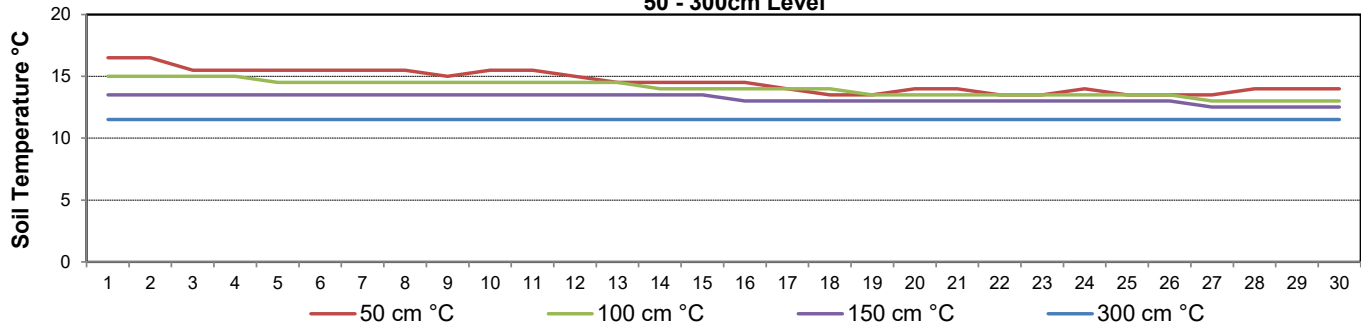
Bright Sunshine, Global and Diffuse Radiation for September 2021



Soil Temperatures for September 2021 Surface - 20cm Level



Soil Temperatures for September 2021 50 - 300cm Level





SRC CLIMATE REFERENCE STATION DAILY DATA REPORT

SASKATOON STATION 4057180

52°09' N 106°36' W 497 m asl Estab. 1963

Preliminary **SEPTEMBER 2021**

Extreme Records for September

Max/Min Temperature °C				Precipitation - Monthly mm				Wind Monthly km/h				CRS Bright Sunshine - Monthly			
S'toon Area	Date	Site	S'toon CRS Date	S'toon Area	Date	Site	S'toon CRS Date	S'toon Airport	Date	S'toon CRS**	Date	Hours	Year	No. of Days	Year
36.1	22/1950	SF	35.6 04/1978	128.8	2006	SWT	128.4 2006	148 ^W	22/1967	89	1986	302.2	2011	30	1966*
-11.1	28,30/1908,'61	SE SF	-7.8 30/1974	0.6	1995	SA	0.8 1995, 2012					114.6	1986	20	1984

**1975 forward * more than one year

Notable Events for CRS Saskatoon - September						Saskatoon Area Stations			Glossary		
Element	Type	Day	New Record	Old Record	Year	Stn	Location	Period	Term	Definition	
Temperature	Highest Maximim Daily	18	32.7	32.2	1966	SM	NWMP	c. 1892-1901	T	Trace of precipitation	
		27	29.3	28.3	2011	SE	Eby	1901-1941	Normal	30 year average beginning with the decade	
		28	30.9	28.9	1970	US	Univ. of Sask.	1915-1964	SOG	Depth of snow-on-the-ground in cm	
	Highest Minimum Daily	18	12.8	12.3	2009	S	Saskatoon	1941-1942	na	not available	
		Highest Mean Daily	18	22.8	21.8	1994	SA	Saskatoon A	1942 -	Degree-days	
	28		20.1	18.6	1967	NRC	Nat. Res. Council	1952-1966	Tm	Mean Temperature	
Growing Degree-days	Highest Daily	18	17.8	16.8	1994	SRC	Sask. Res. Council	1963-	Growing	(Tm-5°C); if Tm ≤ 5°C then GDD = 0	
		28	15.1	13.6	1967	SWT	S'toon Water Treatment Plant	1974 -	Heating	(18°C-Tm); if Tm ≤ 18°C then HDD = 0	
Cooling Degree-days	Highest Daily	18	4.8	3.8	1994	SC	S'toon Central Ave	1974-1989	Cooling	(Tm-18°C); if Tm ≥ 18°C then CDD = 0	
		28	2.1	0.6	1967	S1	Saskatoon 1	1976-1978	Extreme Cooling	(Tm-24°C); if Tm ≥ 24°C then CDD = 0	
						S2	Saskatoon 2	1977-1990	NOTE: It did not go below 0°C at CRS Saskatoon in September		
						K	S'toon Kernen Farm	1993-2004			
						KCS	S'toon Kernen Farm CS	1996-			
				RCS	Environment Canada	2008-	NOTE: Access to CRS Saskatoon data was temporarily suspended September 12, 2021. Access to the data was regained the week of December 6, 2021.				
				SF	Sutherland Forestry	1943-1970	NOTE: due to the temporary suspended access to data, the type of precipitation was not recorded.				

SRC proudly recognizes the following CRS supporters:





SRC CLIMATE REFERENCE STATION DAILY DATA REPORT

SASKATOON STATION 4057180

52°09' N 106°36' W 497 m asl Estab. 1963

Preliminary September 2021

Day	2 meter Wind Speed			Soil Moisture at 0900 hrs (rounded to the 0.5%)																	
	Daily Average	Max ½ hr Avg	½ hr Extreme Max	10 cm	20 cm	50 cm															
	km/h	km/h	km/h	% by volume (soil type is Loam (45.5% Sand, 41.1% Silt, 13.3% Clay))																	
1	9.0	20.8	33	11.0	8.5	9.5															
2	18.0	25.3	40	11.5	8.5	9.0															
3	12.0	18.1	32	11.0	8.5	9.5															
4	5.0	10.6	21	11.5	8.5	9.0															
5	10.0	15.6	25	12.0	8.5	9.5															
6	9.0	19.9	32	12.5	8.5	9.0															
7	13.0	24.2	44	12.0	9.0	9.0															
8	5.0	13.5	22	12.5	8.5	9.0															
9	10.0	19.0	29	12.5	8.5	9.0															
10	9.0	19.4	33	12.5	9.0	9.0															
11	2.0	8.2	14	12.5	8.5	9.0															
12	7.0	13.3	26	12.0	8.5	9.0															
13	12.0	21.6	36	12.5	9.0	9.0															
14	9.0	20.2	38	12.0	9.0	9.0															
15	16.0	26.2	45	12.0	8.5	9.0															
16	21.0	29.4	48	11.5	9.0	9.0															
17	13.0	21.4	34	11.0	8.5	9.0															
18	14.0	28.5	43	11.5	8.5	8.5															
19	11.0	18.6	32	11.5	9.0	8.5															
20	10.0	16.3	30	11.5	8.5	9.0															
21	9.0	20.1	36	10.5	8.5	9.0															
22	9.0	16.1	22	11.5	8.5	8.5															
23	15.0	27.5	45	11.0	8.5	8.5															
24	13.0	18.1	30	10.5	8.5	8.5															
25	7.0	15.1	23	10.5	8.5	8.5															
26	9.0	20.8	32	10.5	8.5	8.5															
27	10.0	20.8	32	10.0	8.5	8.5															
28	9.0	19.4	32	10.0	8.5	8.5															
29	11.0	19.7	33	10.0	8.5	9.0															
30	10.0	19.7	34	10.0	8.5	9.0															
Total																					
Mean				11	9	8.9															
Extreme	21.0	29.4	48.3	12.5	9	9.5															
Date	16	16	16	6	7	1															

Note: Red numbers indicate manual calculation; Red cell indicate data not available

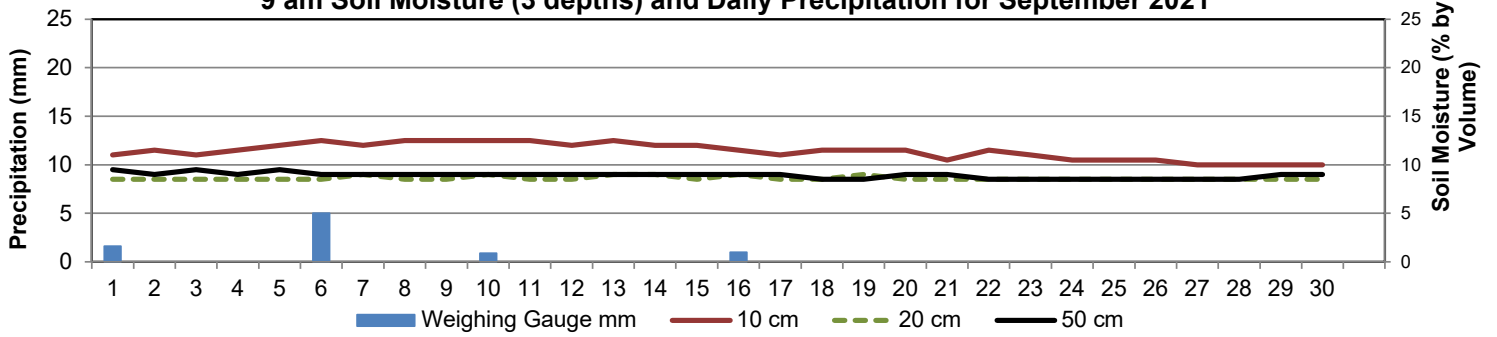
SRC proudly recognizes the following CRS supporters:



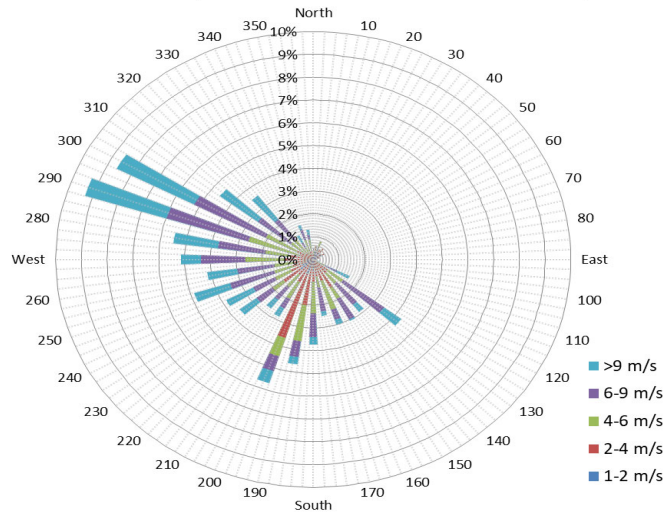
Agriculture and Agri-Food Canada / Agriculture et Agroalimentaire Canada



9 am Soil Moisture (3 depths) and Daily Precipitation for September 2021



1/2 hr Maximum Wind Speed and Direction Saskatoon September 2021



10 minute Average Wind Speed and Direction Saskatoon September 2021

