



SRC CLIMATE REFERENCE STATION DAILY DATA REPORT

SASKATOON STATION 4057180

Saskatchewan 52°09' N 106°36' W 497 m asl Estab. 1963

Preliminary SEPTEMBER 2024

Day	Temperature						Degree-days			Precipitation			Relative Humidity		Station Pressure (sea level)	
	Max	Normal Max	Min	Normal Min	Mean	Normal Mean	Growing	Heating	Cooling	Geonor all-season ppt Gauge	Tipping Bucket	Notes	Max ½ hr Avg	Min ½ hr Avg	Max ½ hr Avg	Min ½ hr Avg
	°C	1991-2020	°C	1991-2020	°C	1991-2020	5°C base	18°C base	18°C base	mm	mm		%	%	mbar	mbar
1	30.1	22.5	11.7	9.5	20.9	16.1	15.9	0.0	2.9	0.0	0.0		62	21	1022	1013
2	33.5	22.4	16.2	9.3	24.9	15.9	19.9	0.0	6.9	0.0	0.0		65	20	1013	1009
3	26.2	23.3	13.7	9.0	20.0	16.1	15.0	0.0	2.0	0.0	0.0		83	38	1016	1008
4	19.0	21.5	10.1	9.4	14.6	15.5	9.6	3.4	0.0	3.9	3.8	showers	88	42	1027	1016
5	23.7	20.7	6.6	8.7	15.2	14.7	10.2	2.8	0.0	0.0	0.0		87	24	1028	1024
6	29.2	21.2	8.7	7.8	19.0	14.5	14.0	0.0	1.0	0.0	0.0		78	21	1025	1016
7	34.7	21.6	12.9	7.8	23.8	14.8	18.8	0.0	5.8	0.0	0.0		62	14	1016	1010
8	33.6	22.4	9.4	8.5	21.5	15.5	16.5	0.0	3.5	0.0	0.0		85	18	1011	1007
9	34.3	20.9	11.4	7.8	22.9	14.4	17.9	0.0	4.9	0.0	0.0		77	14	1007	1001
10	21.9	20.3	10.2	7.0	16.1	13.7	11.1	1.9	0.0	0.0	0.0		71	27	1015	1007
11	21.8	20.9	11.0	6.9	16.4	13.9	11.4	1.6	0.0	0.0	0.0		68	32	1014	1009
12	17.6	19.4	13.5	6.9	15.6	13.2	10.6	2.4	0.0	2.5	2.3	t-storm	92	65	1009	1000
13	15.9	17.9	13.0	6.1	14.5	12.0	9.5	3.5	0.0	2.2	2.0	showers	93	80	1004	999
14	24.8	18.4	9.7	5.3	17.3	11.9	12.3	0.7	0.0	0.0	0.0		86	29	1008	1004
15	22.0	19.1	10.4	6.4	16.2	12.8	11.2	1.8	0.0	0.0	0.0		87	42	1014	1006
16	24.9	19.3	11.3	5.9	18.1	12.6	13.1	0.0	0.1	0.0	0.0		83	28	1014	1009
17	24.6	18.1	11.8	6.3	18.2	12.2	13.2	0.0	0.2	4.2	4.3	t-storm	90	28	1014	1005
18	19.0	17.9	15.7	5.6	17.4	11.8	12.4	0.6	0.0	9.2	9.1	showers	92	70	1006	1000
19	19.4	18.2	9.7	6.0	14.6	12.1	9.6	3.4	0.0	3.3	3.3	showers	94	38	1004	999
20	15.7	16.7	4.1	4.8	9.9	10.8	4.9	8.1	0.0	0.0	0.0		91	46	1013	1004
21	17.6	16.2	6.3	3.6	12.0	10.0	7.0	6.0	0.0	0.0	0.0		88	31	1018	1013
22	19.7	17.6	6.9	4.3	13.3	11.0	8.3	4.7	0.0	0.0	0.0		82	40	1018	1006
23	19.9	19.2	10.4	5.0	15.2	12.1	10.2	2.8	0.0	1.4	1.3	showers	91	51	1008	1006
24	29.2	19.9	10.3	6.1	19.8	13.0	14.8	0.0	1.8	0.0	0.0		83	25	1008	1006
25	32.9	19.9	12.6	5.2	22.8	12.6	17.8	0.0	4.8	0.0	0.0		76	24	1007	997
26	22.3	18.2	8.5	5.3	15.4	11.8	10.4	2.6	0.0	0.3	0.0	t-storm	67	41	1011	997
27	25.9	17.0	6.4	3.9	16.2	10.4	11.2	1.8	0.0	0.0	0.0		76	19	1013	1006
28	23.6	17.2	5.3	3.6	14.5	10.5	9.5	3.5	0.0	0.0	0.0		82	23	1021	1012
29	25.6	17.0	11.0	3.9	18.3	10.5	13.3	0.0	0.3	0.0	0.0		74	33	1011	997
30	13.7	16.5	5.5	2.8	9.6	9.6	4.6	8.4	0.0	11.9	11.9	rain	88	30	1019	1003
Total							364.2	60.0	34.2	38.9	38.1		Extreme / Date	Extreme / Date	Extreme / Date	Extreme / Date
Avg	24.1	19.4	10.1	6.3	17.1	12.9	1991-2020 Normal			33.4	1991-2020 Normal					
Extreme Date	34.7		4.1				238.0	163.6	9.6	362.8	Year to date 2024 Cumulative		94	14	1028	997
	7		20							308.2	Year to date Cumulative Normal		19	7	5	25

Note: Red numbers indicate manual calculation; Red cell indicate data not available

It has not been corrected for wind speed.

SRC proudly recognizes the following CRS supporters:

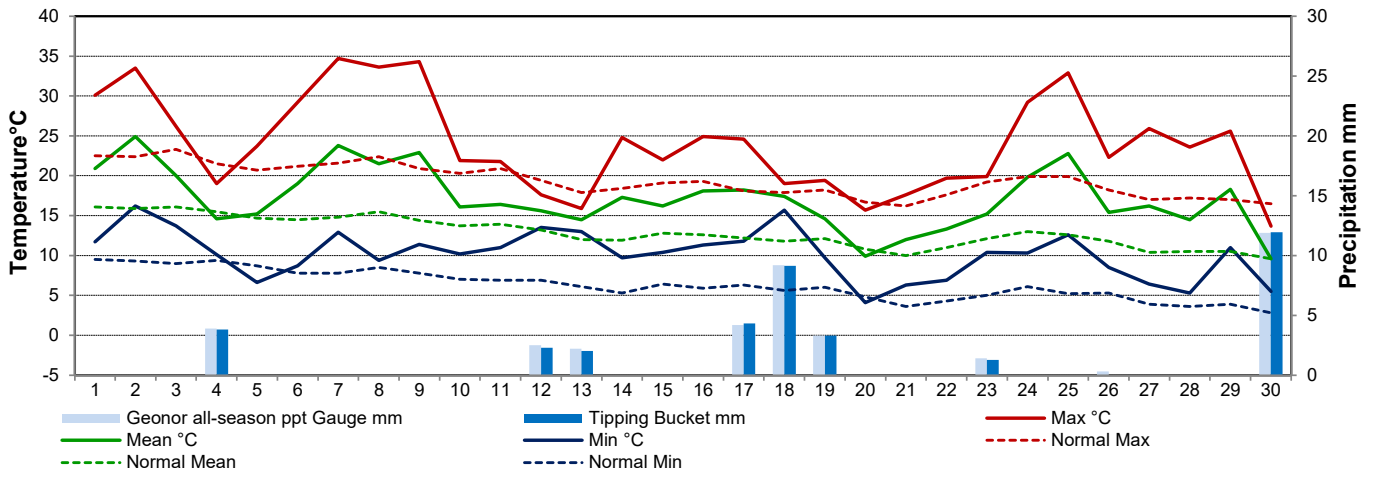


Agriculture and Agri-Food Canada

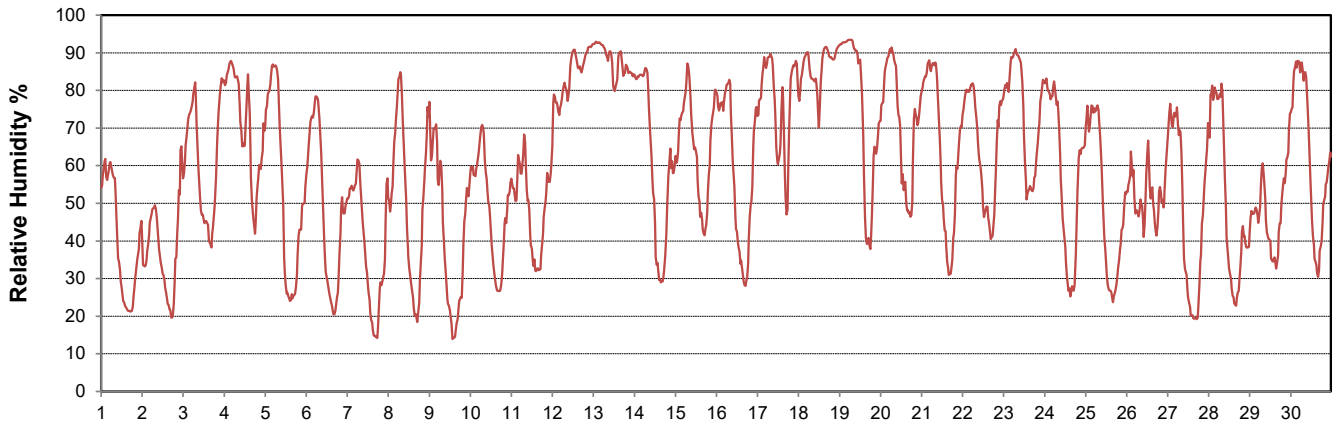
Agriculture et Agroalimentaire Canada



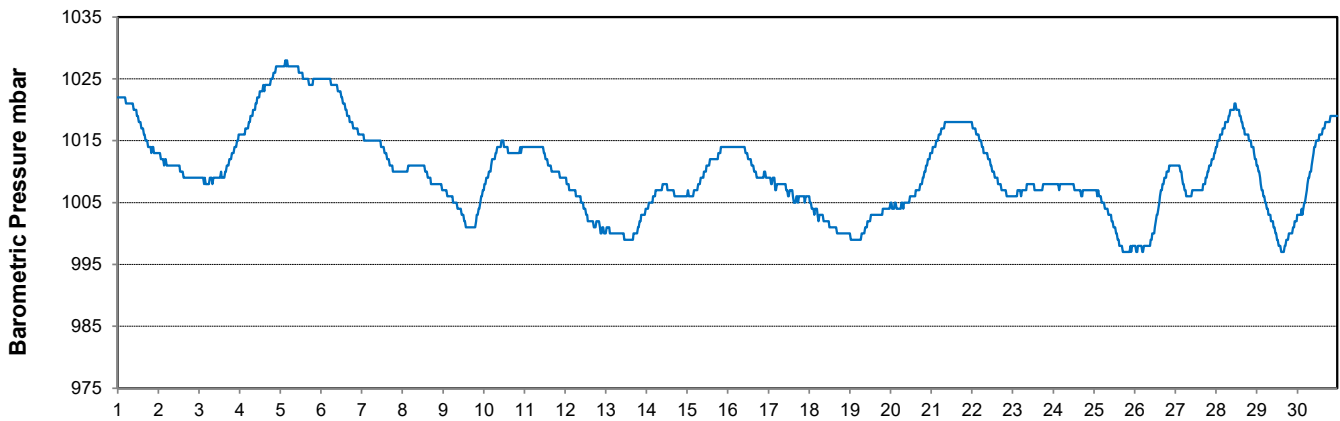
Temperature and Precipitation for September 2024



Relative Humidity for September 2024



Barometric Pressure Corrected to Sea Level for September 2024





SRC CLIMATE REFERENCE STATION DAILY DATA REPORT

SASKATOON STATION 4057180

Saskatchewan 52°09' N 106°36' W 497 m asl Estab. 1963

Preliminary SEPTEMBER 2024

Day	Wind Gust (10 meters)			Wind Speed (10 meters) Daily Average	Soil Temperatures at 0900hrs								Radiation				
	Max	Direction	Time		Surface	5 cm	10 cm	20 cm	50 cm	100 cm	150 cm	300 cm	Bright Sunshine	Possible	% Possible	Global	Diffuse
	km/h				°C	°C	°C	°C	°C	°C	°C	°C	hours	hours		MJ/m ²	MJ/m ²
1	43.2	S	14:51	13.9	15.0	14.0	15.0	16.0	16.0	14.5	14.0	11.0	11.5	13.6	84.8	19.6	2.3
2	31.1	SSW	2:12	8.0	18.5	15.5	16.5	17.5	16.0	14.5	13.5	11.0	12.9	13.5	95.6	19.6	2.2
3	37.2	NNW	17:45	11.9	19.0	16.5	17.5	18.0	16.5	14.5	13.5	11.0	6.6	13.4	49.2	10.5	6.8
4	35.6	NW	16:15	12.5	15.0	16.5	17.0	17.5	16.5	14.5	13.5	11.0	4.0	13.4	29.9	8.5	4.8
5	43.2	N	15:27	12.6	11.0	12.0	13.5	15.0	16.5	14.5	13.5	11.0	11.9	13.3	89.5	18.7	4.0
6	34.4	SE	3:04	16.3	13.0	12.5	13.5	15.0	15.5	14.5	13.5	11.0	12.3	13.2	93.0	18.8	2.6
7	31.8	SW	15:20	10.1	17.5	14.0	15.0	16.0	15.5	14.5	13.5	11.0	12.3	13.2	93.5	18.3	3.3
8	13.5	SW	1:50	5.3	14.0	14.5	15.5	16.5	16.0	14.0	13.5	11.0	12.3	13.1	93.9	18.2	2.8
9	41.5	NW	23:01	11.6	18.0	14.5	15.5	17.0	16.0	14.0	13.5	11.5	8.4	13.0	64.5	14.1	4.5
10	30.4	N	9:11	12.2	12.5	15.5	16.5	17.5	16.0	14.0	13.5	11.5	11.0	13.0	84.9	17.9	3.1
11	48.0	E	16:57	19.4	13.5	15.0	16.0	16.5	16.0	14.0	13.5	11.5	9.0	12.9	69.8	12.8	7.2
12	39.0	E	19:33	15.8	14.0	15.5	16.0	16.5	16.0	14.0	13.5	11.5	0.0	12.8	0.0	2.3	2.1
13	44.2	WNW	9:39	11.4	13.0	15.0	15.5	16.0	15.5	14.0	13.5	11.5	0.0	12.8	0.0	3.5	3.2
14	32.4	WSW	3:37	13.8	12.0	13.0	14.0	15.0	15.5	14.0	13.5	11.5	10.9	12.7	85.8	15.8	4.1
15	40.2	W	9:57	14.3	13.5	13.5	14.5	15.5	15.0	14.0	13.5	11.5	7.3	12.6	57.8	12.1	5.6
16	19.8	SE	14:30	7.0	14.0	13.5	14.0	15.0	15.0	14.0	13.5	11.5	7.4	12.6	58.9	12.7	6.2
17	49.6	ESE	15:11	12.2	14.5	14.5	15.0	15.5	15.0	14.0	13.5	11.5	6.4	12.5	51.2	8.8	3.2
18	29.3	NE	8:50	12.5	16.0	16.0	16.0	16.0	15.0	14.0	13.5	11.5	0.0	12.4	0.0	2.3	2.2
19	47.3	NNW	14:50	17.3	15.0	16.0	16.5	16.0	15.0	14.0	13.5	11.5	4.7	12.4	38.0	8.0	3.5
20	23.9	NW	16:49	7.6	7.5	11.0	12.5	14.0	15.0	14.0	13.5	11.5	0.8	12.3	6.5	6.5	5.8
21	29.9	W	15:21	11.6	9.0	11.0	11.5	13.0	14.5	14.0	13.5	11.5	8.4	12.2	68.7	12.8	3.6
22	28.0	SSW	16:40	9.7	9.5	10.0	11.0	12.0	14.0	13.5	13.5	11.5	6.0	12.2	49.3	10.0	7.5
23	32.7	WNW	16:28	11.6	12.0	12.0	12.5	13.0	13.5	13.5	13.0	11.5	4.5	12.1	37.2	9.2	5.1
24	40.1	W	14:23	11.9	13.5	12.0	12.5	13.0	13.5	13.5	13.0	11.5	10.1	12.0	84.0	13.9	2.4
25	46.2	S	13:57	14.5	15.5	12.5	13.0	14.0	14.0	13.0	13.0	11.5	11.3	12.0	94.5	14.4	1.7
26	59.2	NW	14:45	19.5	18.0	15.0	15.5	15.0	14.0	13.0	13.0	11.5	5.3	11.9	44.5	8.5	4.5
27	43.5	W	11:45	13.6	13.5	11.0	12.0	13.5	14.5	13.0	13.0	11.5	11.2	11.8	94.7	14.3	1.8
28	34.8	ESE	23:48	9.2	8.5	10.0	11.0	13.0	14.0	13.0	13.0	11.5	11.3	11.8	96.1	13.9	1.6
29	43.1	W	20:52	19.3	15.0	11.5	12.0	13.0	13.5	13.0	13.0	11.5	6.2	11.7	53.0	9.2	5.3
30	72.0	NNW	5:34	30.3	7.0	10.5	11.5	13.0	13.5	13.0	13.0	11.5	6.6	11.6	56.7	11.3	3.2
Total													230.6	377.9	61.0	366.5	116.2
Mean				13.2	13.6	13.5	14.3	15.2	15.1	13.9	13.4	11.4	1991-2020 Normal				
Extreme	72.0	NNW	5:34		1971- 2000 Normal for Soil Temperatures								214.7	378.9	56.7	373.1	120.9
Date	30				10.5	11.0	12.5	13.2	12.4	11.7	9.9	No. of Bright Sunshine days = 27					

Note: Red numbers indicate manual calculation Red cell indicate data not available

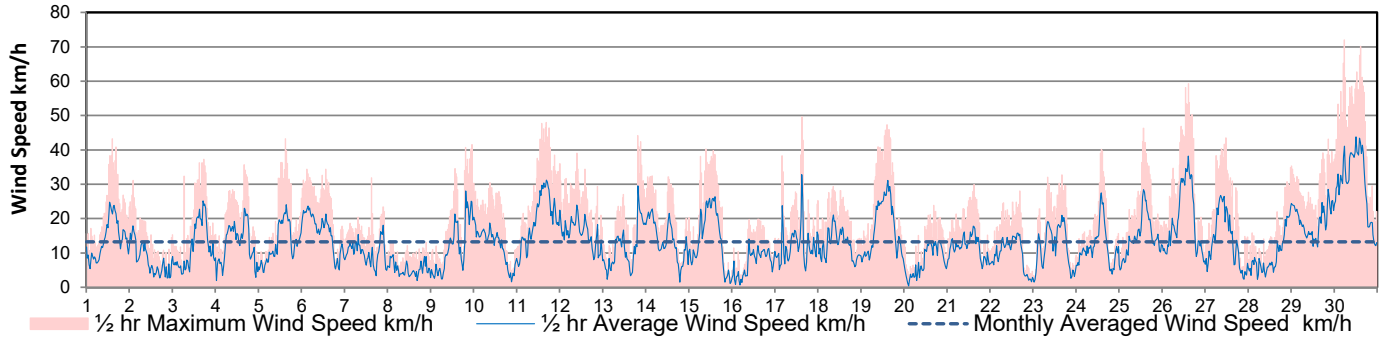
SRC proudly recognizes the following CRS supporters:



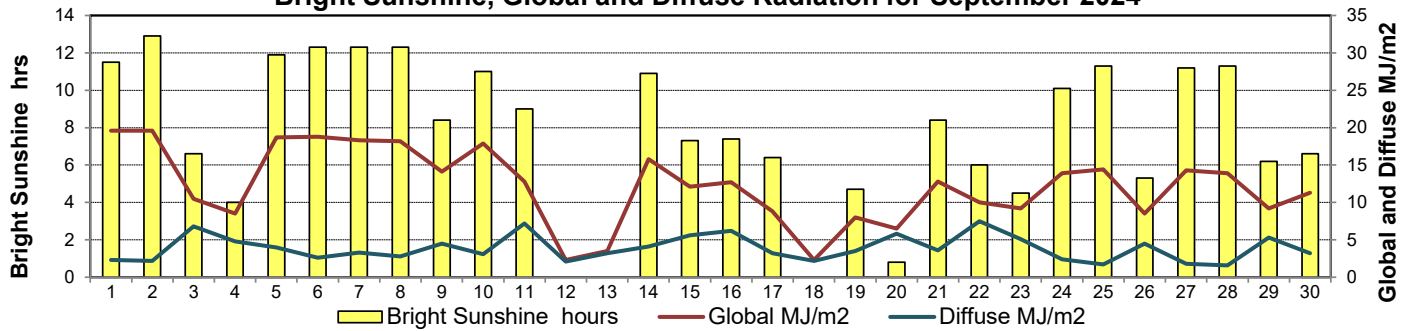
Agriculture and Agri-Food Canada / Agriculture et Agroalimentaire Canada



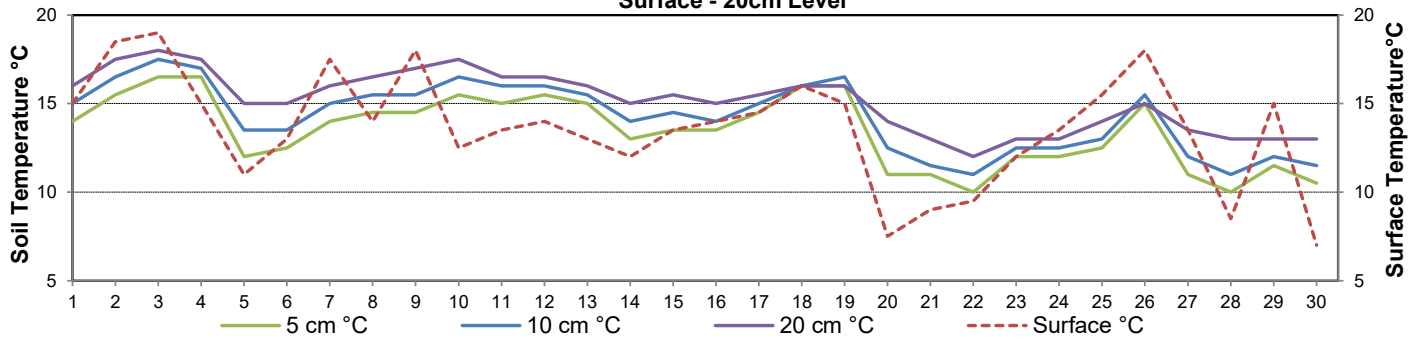
Wind Speed for September 2024



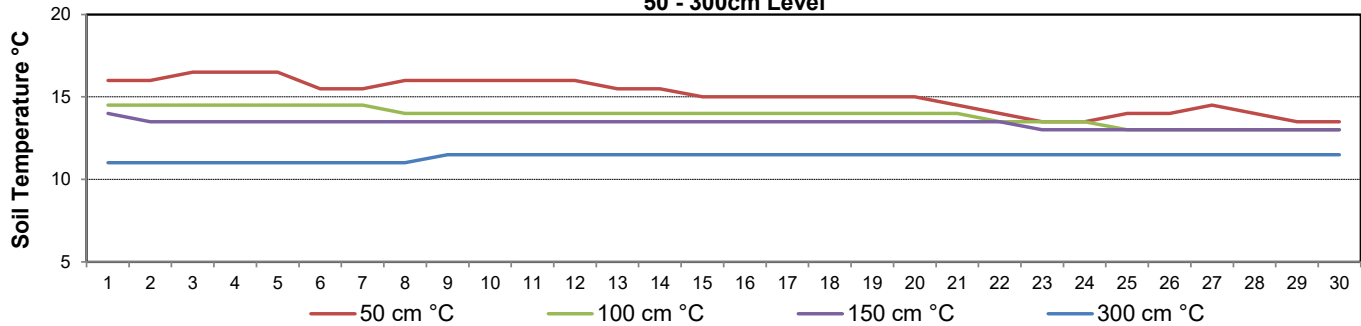
Bright Sunshine, Global and Diffuse Radiation for September 2024



Soil Temperatures for September 2024
Surface - 20cm Level



Soil Temperatures for September 2024
50 - 300cm Level





SRC CLIMATE REFERENCE STATION DAILY DATA REPORT

SASKATOON STATION 4057180

52°09' N 106°36' W 497 m asl Estab. 1963

Preliminary **SEPTEMBER 2024**

Extreme Records for September

Max/Min Temperature °C				Precipitation - Monthly mm					Wind Monthly km/h				CRS Bright Sunshine - Monthly				
S'toon Area	Date	Site	S'toon CRS	Date	S'toon Area	Date	Site	S'toon CRS	Date	S'toon Airport	Date	S'toon CRS**	Date	Hours	Year	No. of Days	Year
36.1	22/1950	SF	35.9	04/2022	128.8	2006	SWT	128.4	2006	148 ^W	22/1967	89	1986	302.2	2011	30	1966*
-11.1	28,30/1908,'61	SE SF	-7.8	30/1974	0.6	1995	SA	0.8	1995, 2012					114.6	1986	20	1984

**1975 forward * more than one year

Notable Events for CRS Saskatoon - September						Saskatoon Area Stations				Glossary						
Element	Type	Day	New Record	Old Record	Year	SM	NWMP	c.	1892-1901	T	Trace of precipitation					
Temperature	Highest Maximum Daily	7	34.7	34.6	2022	SE	Eby	1901-1941		Normal	30 year average beginning with the decade					
		9	34.3	33.0	1981	US	Univ. of Sask.	1915-1964		SOG	Depth of snow-on-the-ground in cm					
	Highest Minimum Daily	18	15.7	12.8	2021	S	Saskatoon	1941-1942		na	not available					
		29	11.0	10.1	2012	SA	Saskatoon A	1942 -		Degree-days						
		25	11.0	10.1	2012	NRC	Nat. Res. Council	1952-1966		Tm	Mean Temperature					
	Highest Mean Daily	2	24.9	24.5	1987	SRC	Sask. Res. Council	1963-		Growing	(Tm-5°C); if Tm ≤ 5°C then HDD = 0					
		7	23.8	23.7	2022	SWT	S'toon Water Treatment Plant	1974 -		Heating	(18°C-Tm); if Tm ≤ 18°C then HDD = 0					
		25	22.8	21.6	2001	SC	S'toon Central Ave	1974-1989		Cooling	(Tm-18°C); if Tm ≥ 18°C then CDD = 0					
		29	18.3	18.2	2012	S1	Saskatoon 1	1976-1978		Extreme Cooling	(Tm-24°C); if Tm ≥ 24°C then CDD = 0					
	Growing Degree-days	Highest Daily	2	19.9	19.5	1987	S2	Saskatoon 2	1977-1990		- U of S student tour of CRS S'toon (04 Sept 2024)					
7			18.8	18.7	2022	K	S'toon Kernen Farm	1993-2004								
25			17.8	16.6	2001	KCS	S'toon Kernen Farm CS	1996-								
29			13.3	13.2	2012	RCS	Environment Canada	2008-								
Heating Degree-days	Lowest monthly		60	65	2009	SF	Sutherland Forestry	1943-1970								
Cooling Degree-days 18°C	Highest Daily	2	6.9	6.5	1987	Highest Extreme Minimum Monthly Temperature				Day			New Record	Old Record	Year	Day
		7	5.8	5.7	2022	20	4.1	2.3	2022	15						
		25	4.8	3.6	2001	Temperature										
		29	0.3	0.2	2012	2nd highest Maximum Monthly average temperature for September for period of record										
Extreme Cooling Degree-days 24°C	Highest Daily	2	0.9	0.5	1987	Highest Minimum Monthly average temperature for September for period of record										
		2nd highest Mean Monthly average temperature for September for period of record														

SRC proudly recognizes the following CRS supporters:



Agriculture and Agri-Food Canada / Agriculture et Agroalimentaire Canada





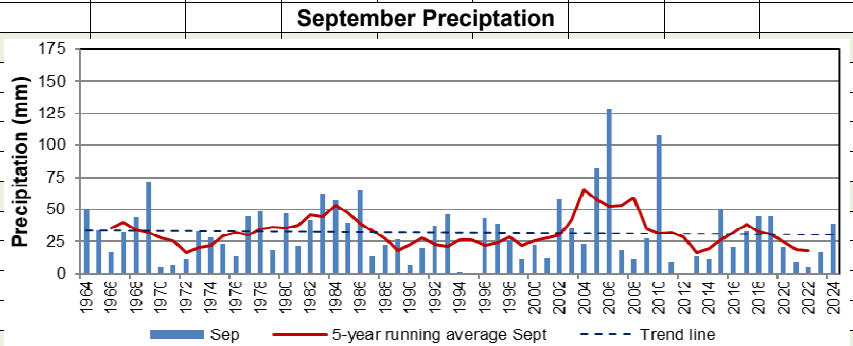
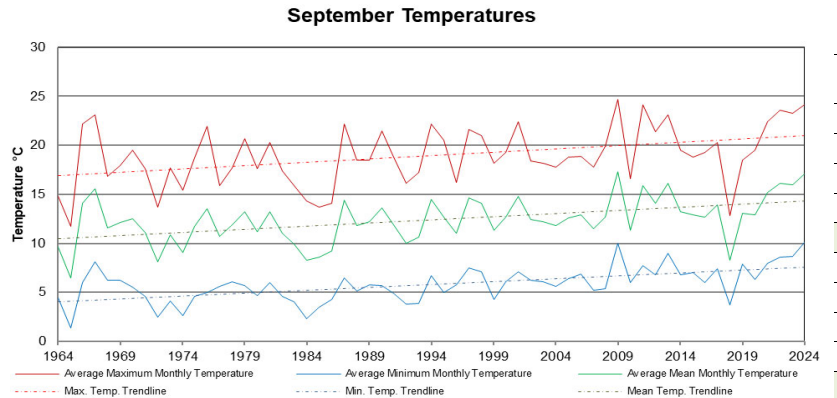
SRC CLIMATE REFERENCE STATION DAILY DATA REPORT

SASKATOON STATION 4057180

52°09' N 106°36' W 497 m asl Estab. 1963

Preliminary September 2024

Day	2 meter Wind Speed			Soil Moisture at 0900 hrs (rounded to the 0.5%)		
	Daily Average	Max ½ hr Avg	½ hr Extreme Max	10 cm	20 cm	50 cm
	km/h	km/h	km/h	% by volume (soil type is Loam (45.5% Sand, 41.1% Silt, 13.3% Clay))		
1	9.0	17.6	38	13.0	8.5	13.5
2	3.0	10.1	21	12.5	8.5	13.0
3	7.0	16.7	28	12.0	8.5	12.5
4	6.0	16.3	26	11.0	8.5	13.0
5	7.0	16.3	30	10.0	8.5	12.5
6	10.0	17.2	28	9.5	8.5	12.5
7	5.0	11.8	24	9.0	8.5	12.5
8	1.0	5.0	10	8.0	9.0	12.5
9	6.0	18.7	32	7.5	9.0	12.0
10	6.0	13.4	23	7.0	8.5	12.0
11	14.0	22.7	38	6.0	8.5	11.5
12	11.0	17.1	29	6.0	8.5	11.5
13	7.0	19.9	30	6.0	8.5	11.5
14	10.0	16.9	28	5.5	8.5	11.5
15	9.0	18.8	31	5.5	8.5	11.0
16	4.0	10.1	21	5.5	8.5	11.0
17	8.0	24.2	39	6.0	8.5	10.5
18	9.0	14.6	23	6.0	8.5	11.0
19	12.0	21.7	34	18.5	8.0	11.0
20	5.0	9.9	18	18.0	8.0	11.5
21	7.0	13.0	22	17.0	8.0	10.5
22	6.0	11.2	22	15.0	8.5	11.0
23	7.0	14.7	24	14.5	8.0	10.5
24	7.0	19.0	31	14.5	8.0	10.5
25	8.0	19.1	34	13.0	8.5	10.5
26	11.0	25.7	40	12.5	8.5	10.5
27	8.0	19.9	32	10.5	8.0	10.5
28	5.0	17.0	29	9.5	8.0	10.5
29	13.0	19.5	36	8.0	8.5	10.5
30	21.0	30.2	56	10.0	8.5	10.5
Total						
Mean				10	8	11.5
Extreme	21.0	30.2	55.8	18.5	9	13.5
Date	30	30	30	19	8	1



Note: Red numbers indicate manual calculation; Red cell indicate data not available

SRC proudly recognizes the following CRS supporters:

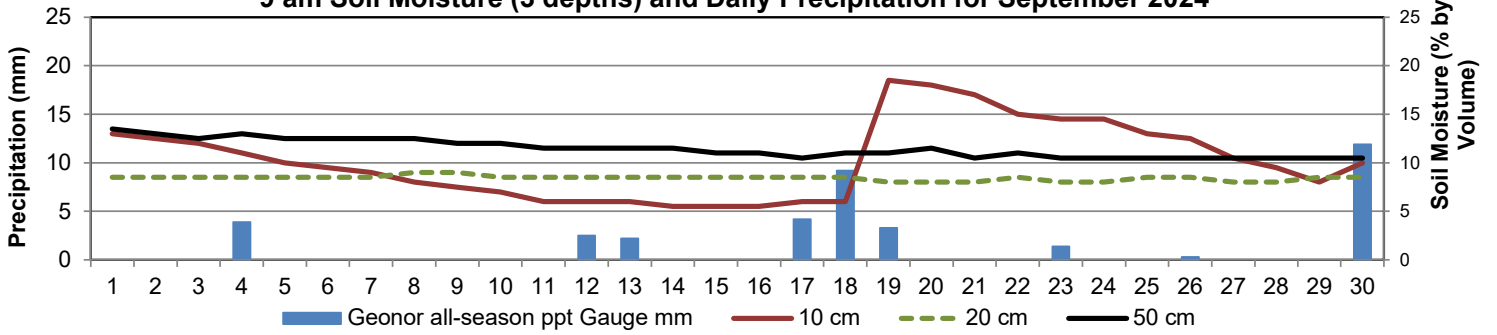


Agriculture and Agri-Food Canada

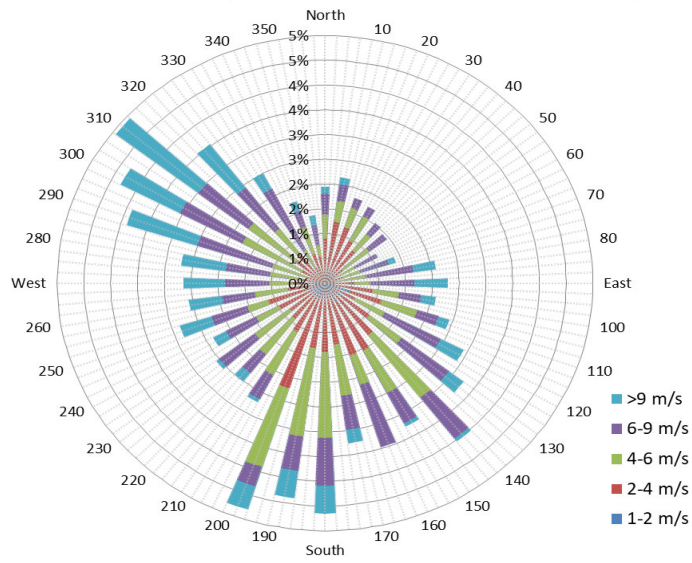
Agriculture et Agroalimentaire Canada



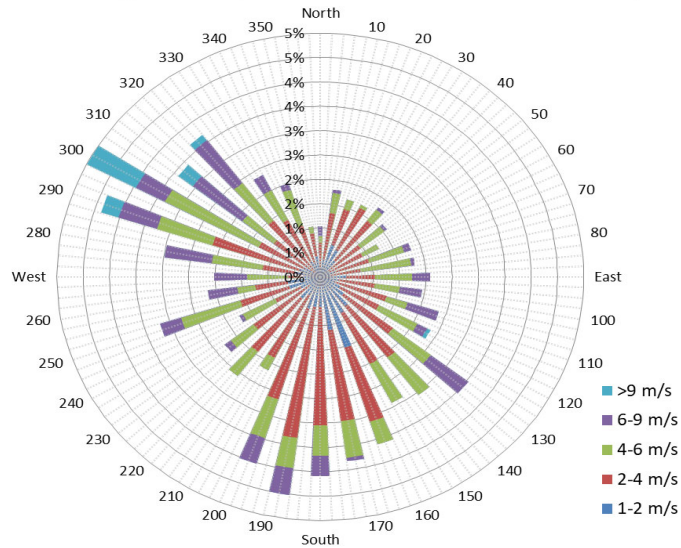
9 am Soil Moisture (3 depths) and Daily Precipitation for September 2024



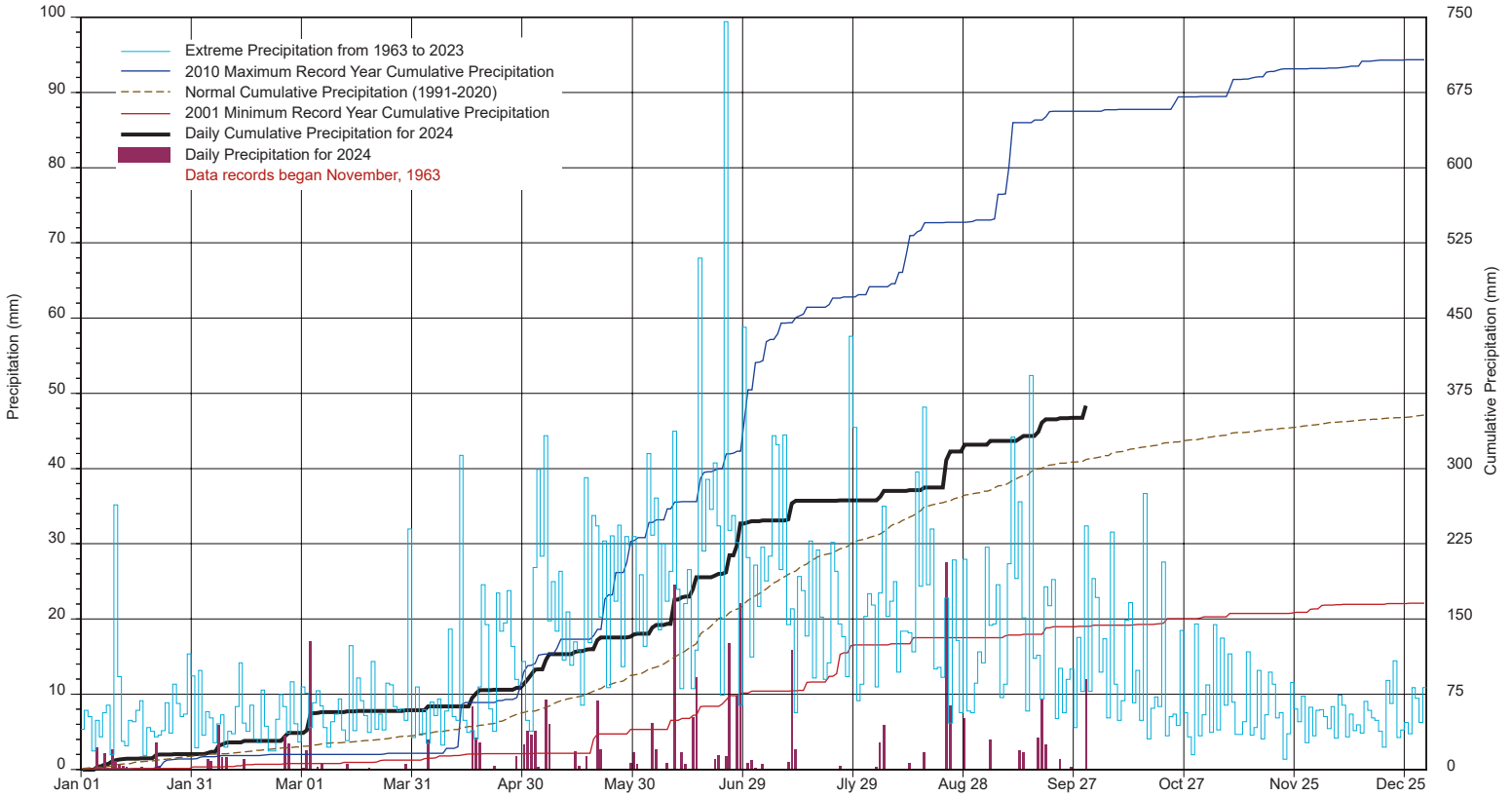
1/2 hr Maximum Wind Speed and Direction Saskatoon Sept 2024



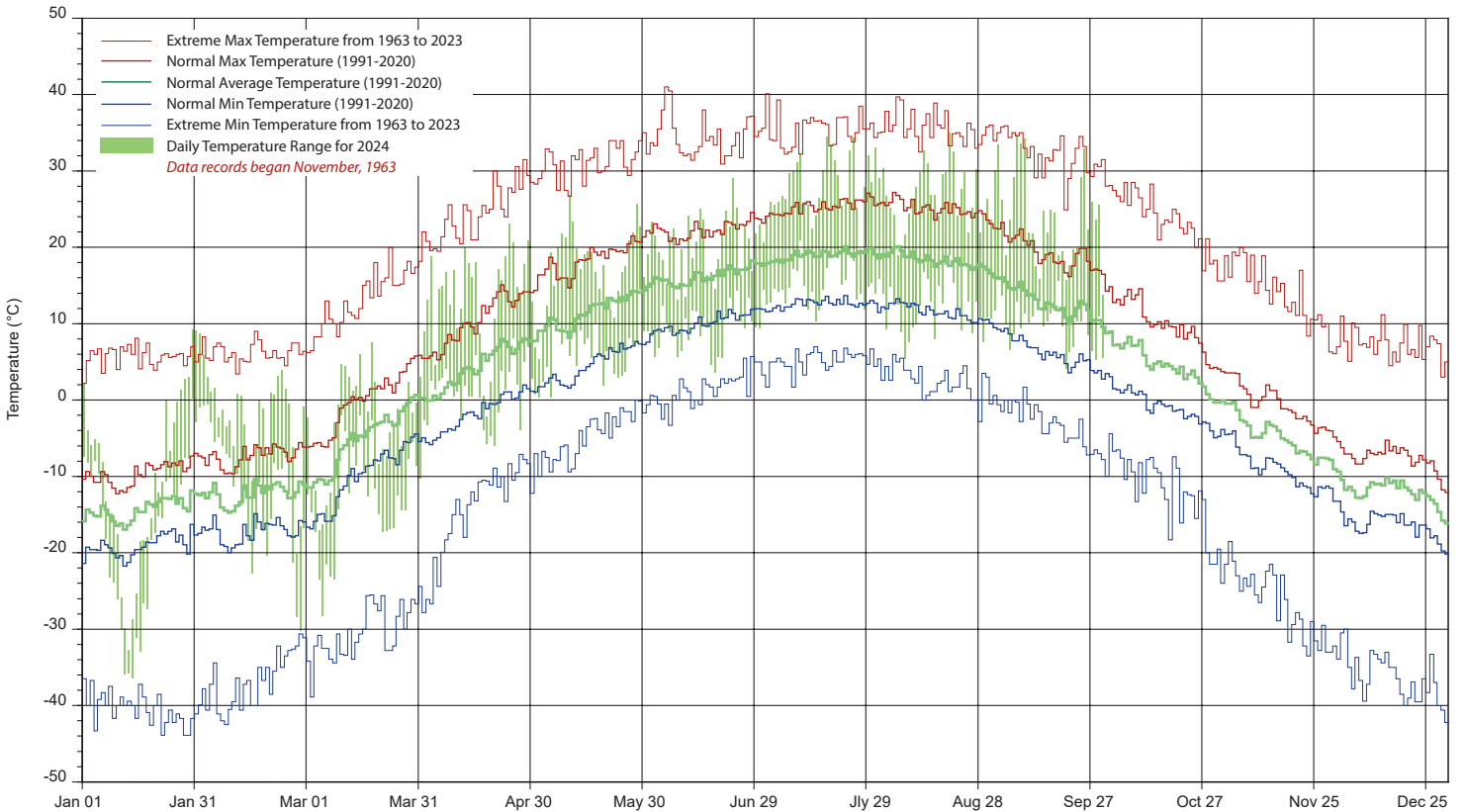
10 minute Average Wind Speed and Direction Saskatoon Sept 2024



SASKATCHEWAN RESEARCH COUNCIL SASKATOON CLIMATE REFERENCE STATION 2024 PRECIPITATION AND NORMALS



2024 TEMPERATURES AND NORMALS



SRC proudly recongnizes the following CRS supporters:

