



SRC CLIMATE REFERENCE STATION DAILY DATA REPORT

CONSERVATION LEARNING CENTRE

Saskatchewan 53.03°N 105.77°W Estab. 2011

Preliminary

June 2017

Day	Temperature			Degree-days			Precipitation			Relative Humidity		Station Pressure <i>corrected to sea level</i>	
	Max	Min	Mean	Growing	Heating	Cooling	Weighing Gauge	Tipping Bucket	Notes	Max ½ hr Avg	Min ½ hr Avg	Max ½ hr Avg	Min ½ hr Avg
	°C	°C	°C	5°C base	18°C base	18°C base	mm	mm		%	%	mbar	mbar
1	32.6	13.5	23.1	18.1	0.0	5.1	0.0	0.0		48	19	1008	1000
2	27.6	14.1	20.9	15.9	0.0	2.9	0.1	0.0		73	27	1003	999
3	24.7	11.9	18.3	13.3	0.0	0.3	0.2	0.4		84	28	1012	1003
4	28.4	10.0	19.2	14.2	0.0	1.2	0.2	0.0		90	23	1013	1010
5	27.0	12.9	20.0	15.0	0.0	2.0	0.1	0.0		77	33	1012	1006
6	22.4	11.2	16.8	11.8	1.2	0.0	0.0	0.0		82	27	1020	1013
7	26.4	7.8	17.1	12.1	0.9	0.0	0.1	0.0		94	22	1019	1015
8	27.9	11.0	19.5	14.5	0.0	1.5	0.1	0.0		93	18	1016	1006
9	22.8	13.2	18.0	13.0	0.0	0.0	0.7	0.6		91	50	1006	993
10	14.9	6.3	10.6	5.6	7.4	0.0	14.0	13.8		92	83	1000	992
11	16.1	6.9	11.5	6.5	6.5	0.0	0.0	0.0		90	40	1009	1000
12	22.6	3.7	13.2	8.2	4.8	0.0	0.0	0.0		91	26	1014	1009
13	22.6	13.3	18.0	13.0	0.0	0.0	0.0	0.0		76	40	1010	1007
14	19.2	10.7	15.0	10.0	3.0	0.0	4.2	4.2		91	42	1006	1001
15	13.1	10.4	11.8	6.8	6.2	0.0	0.1	0.2		93	73	1005	1003
16	20.8	7.7	14.3	9.3	3.7	0.0	0.0	0.2		93	46	1005	1002
17	19.0	9.7	14.4	9.4	3.6	0.0	3.1	3.4		92	56	1009	1003
18	20.4	9.3	14.9	9.9	3.1	0.0	5.5	5.4		94	44	1012	1009
19	18.6	9.3	14.0	9.0	4.0	0.0	1.7	2.2		91	38	1015	1011
20	21.4	7.5	14.5	9.5	3.5	0.0	0.4	0.0		92	34	1014	1004
21	16.1	10.1	13.1	8.1	4.9	0.0	6.6	7.4		90	58	1004	999
22	14.2	7.8	11.0	6.0	7.0	0.0	7.2	7.2		91	58	1015	1000
23	11.6	4.9	8.3	3.3	9.7	0.0	0.0	0.0		89	56	1021	1016
24	20.0	2.1	11.1	6.1	6.9	0.0	0.0	0.2		94	35	1023	1021
25	21.4	7.6	14.5	9.5	3.5	0.0	0.0	0.0		91	26	1024	1021
26	22.5	7.0	14.8	9.8	3.2	0.0	0.0	0.0		85	27	1021	1003
27	24.6	13.3	19.0	14.0	0.0	1.0	0.0	0.0		66	48	1003	995
28	21.3	9.8	15.6	10.6	2.4	0.0	0.4	0.2		84	44	1008	1001
29	17.8	8.0	12.9	7.9	5.1	0.0	0.0	0.2		91	45	1014	1008
30	20.9	6.3	13.6	8.6	4.4	0.0	0.2	0.0		93	49	1014	1011
Total				309.0	95.0	14.0	44.9	45.6					
Avg	21.3	9.2	15.3				171.1	Cumulative ppt					
Extreme	32.6	2.1					14.0	13.8		94	18	1024	992
Date	1	24					10	10		7	8	25	10

SRC proudly recognizes the following CRS supporters:



Agriculture and
Agri-Food Canada

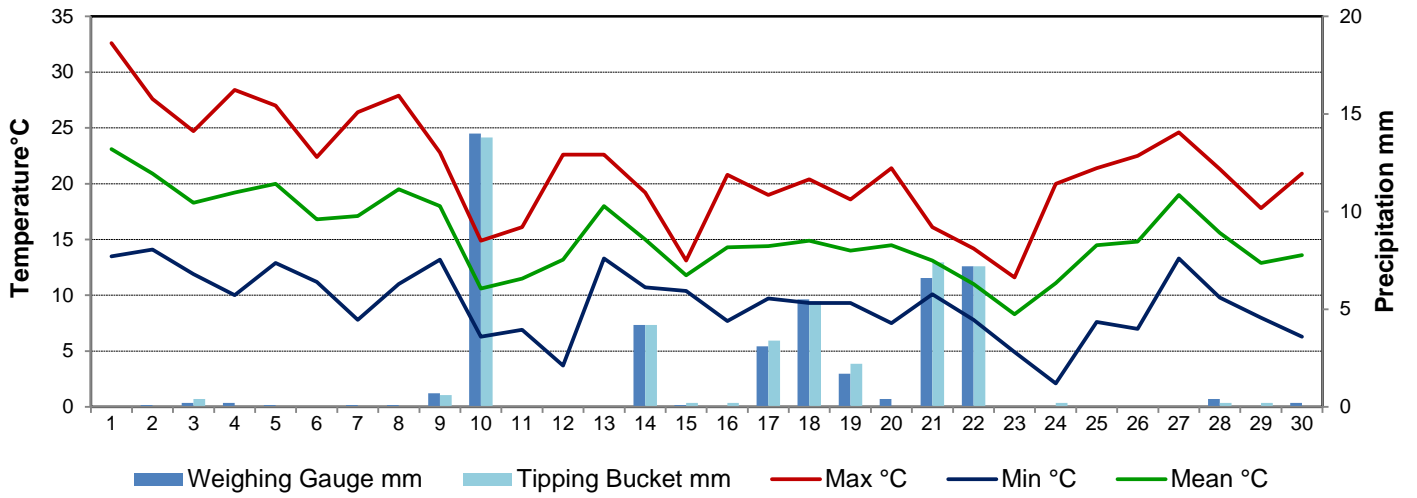
Agriculture et
Agroalimentaire Canada



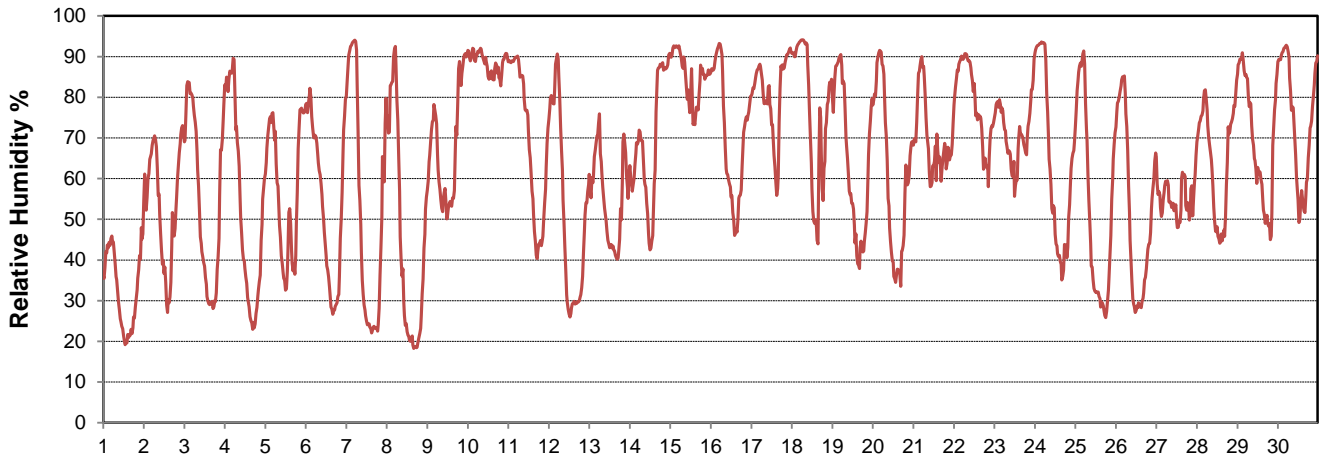
CAMPBELL SCIENTIFIC
WHEN MEASUREMENTS MATTER



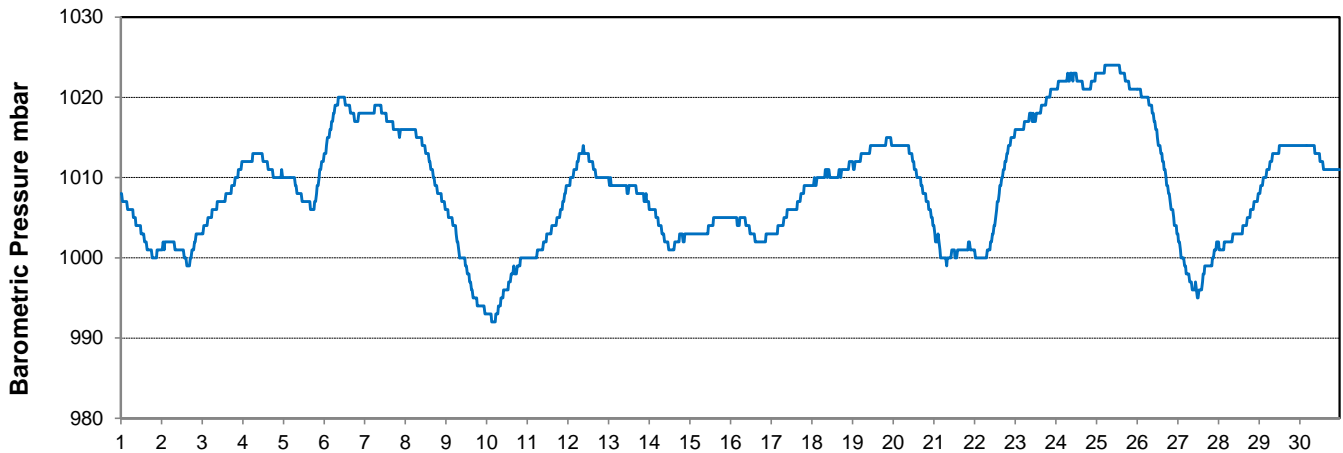
Temperature and Precipitation for June 2017



Relative Humidity for June 2017



Barometric Pressure Corrected to Sea Level for June 2017





SRC CLIMATE REFERENCE STATION DAILY DATA REPORT

CONSERVATION LEARNING CENTRE

Saskatchewan 53.03°N 105.77°W Estab. 2011

Preliminary

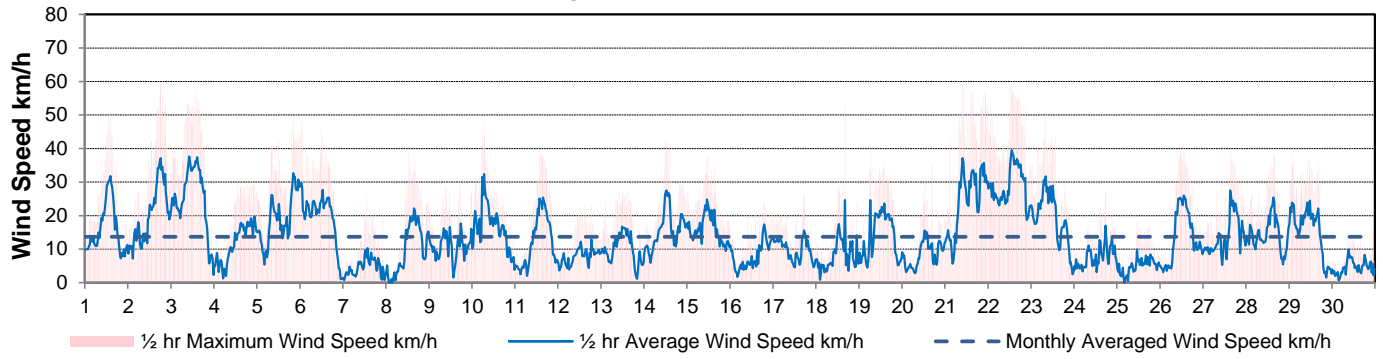
June 2017

Day	Wind Gust			Soil Temperatures at 0900hrs								Soil Moisture	Radiation		
	Max	Direction	Time	Surface	5 cm	10 cm	20 cm	50 cm	100 cm	150 cm	300 cm	0900hrs	Bright Sunshine	Global	Diffuse
	km/h			°C	°C	°C	°C	°C	°C	°C	°C	%	hours	MJ/m ²	MJ/m ²
1	50.3	S	14:04	22.0	9.5	9.0	8.5	6.0	4.0	2.5	3.0	35	12.1	23.6	11.6
2	59.1	WSW	18:14	23.0	11.0	10.5	9.5	6.5	4.0	2.5	3.0	35	10.1	22.0	12.6
3	56.7	NW	13:57	18.0	11.0	11.0	10.0	7.0	4.0	3.0	3.0	35	13.1	28.0	8.0
4	31.2	ESE	20:38	19.0	10.5	10.5	10.0	7.5	4.5	3.0	3.0	34	15.5	28.7	7.6
5	48.3	NW	20:05	22.5	12.0	11.5	10.5	8.0	5.0	3.0	3.0	34	8.4	16.9	8.8
6	47.9	NW	0:52	16.0	12.0	11.5	11.0	8.0	5.0	3.5	3.0	34	14.1	30.0	7.8
7	26.3	ESE	13:29	19.0	11.0	11.0	10.5	8.5	5.5	3.5	3.0	33	16.0	29.1	8.8
8	39.1	SE	12:42	21.5	12.0	11.5	11.0	8.5	5.5	3.5	3.0	33	15.0	29.3	9.4
9	29.9	N	17:39	20.0	12.5	12.5	11.5	9.0	6.0	4.0	3.0	33	2.4	11.3	9.2
10	47.2	ENE	7:00	7.5	12.5	12.0	11.5	9.0	6.0	4.0	3.0	36	0.0	7.0	6.0
11	39.7	NNW	13:52	10.0	11.0	11.0	10.5	9.0	6.0	4.0	3.0	36	5.3	17.7	12.2
12	23.4	SSE	14:49	14.0	10.5	10.5	10.5	9.0	6.5	4.5	3.0	35	16.3	30.5	9.2
13	27.4	SSE	14:45	19.0	12.5	12.0	11.5	9.0	6.5	4.5	3.0	35	7.0	17.2	8.7
14	42.3	NE	12:01	15.0	12.5	12.5	11.5	9.5	6.5	4.5	3.0	34	1.0	8.9	7.5
15	37.5	N	11:35	11.5	12.0	11.5	11.0	9.0	6.5	4.5	3.0	36	0.2	7.5	6.5
16	24.1	ENE	18:34	15.5	11.5	11.5	11.0	9.5	7.0	5.0	3.0	35	9.6	23.8	10.5
17	25.9	W	17:02	13.0	13.0	12.5	12.0	9.5	7.0	5.0	3.5	35	2.6	13.7	9.8
18	53.1	E	16:11	14.0	13.0	12.5	12.0	10.0	7.0	5.0	3.0	36	8.6	22.8	10.2
19	41.7	NNW	6:11	14.0	13.0	13.0	12.5	10.0	7.0	5.0	3.0	37	13.5	28.4	9.7
20	35.5	SSE	16:45	16.5	13.0	13.0	12.5	10.5	7.5	5.5	3.5	36	8.5	19.0	9.0
21	58.9	NW	9:35	15.5	13.5	13.5	12.5	10.5	7.5	5.5	3.0	37	4.5	16.0	9.7
22	59.3	NNW	12:54	12.0	12.5	12.5	12.0	10.0	7.5	5.5	3.0	37	1.4	10.1	8.8
23	51.4	NNW	8:25	9.0	11.5	11.5	12.0	10.5	8.0	6.0	3.5	36	6.8	14.2	11.0
24	27.3	ENE	17:38	12.5	10.5	10.5	11.0	10.5	8.0	6.0	3.5	36	12.4	24.3	10.8
25	18.1	ENE	11:19	15.0	12.0	12.0	11.5	10.5	8.0	6.0	3.5	36	16.1	29.9	10.1
26	41.5	S	13:25	17.5	12.5	12.5	12.0	10.5	8.5	6.5	3.5	35	11.8	25.6	9.2
27	39.0	NW	15:08	19.0	13.5	13.5	12.5	10.5	8.5	6.5	4.0	35	9.8	18.0	12.1
28	40.4	NW	15:15	17.0	13.5	13.5	13.0	11.0	8.5	6.5	4.0	35	10.9	22.4	10.3
29	37.9	NNE	2:14	10.5	13.5	13.5	13.0	11.0	8.5	6.5	3.5	34	6.4	15.6	12.1
30	15.5	E	22:38	13.5	12.5	12.5	12.5	11.0	8.5	6.5	4.0	34	3.5	14.9	10.9
Total													262.9	606.4	288.1
Mean				15.8	12.1	11.9	11.4	9.3	6.6	4.7	3.2	35			
Extreme	59.3	NNW	12:54												
Date	22														

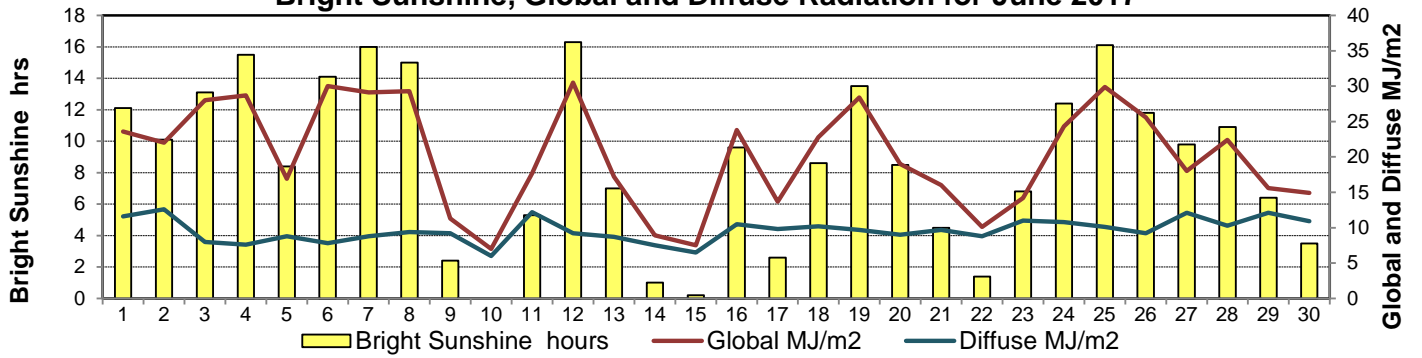
GLOSSARY OF TERMS

Degree-days	Radiation
T _m Mean Temperature	Bright Sunshine is the unobstructed direct radiation from the sun, as opposed to the shading of a location by clouds or by other atmospheric obstructions.
Growing (T _m -5°C); if T _m ≤ 5°C then GDD = 0	
Heating (18°C-T _m); if T _m ≥ 18°C then HDD = 0	
Cooling (T _m -18°C); if T _m ≤ 18°C then CDD = 0	Diffuse is radiation reaching the earth's surface after having been scattered from the direct solar beam
T Trace of Precipitation	Global is the sum of the direct solar and diffuse radiation
SOG Depth of snow-on-the-ground	
Red Cell no data available	Relative Humidity The ratio of the air's water vapour content to its water vapour capacity which changes with temperature.
Red Number manual calculation	Air Pressure The force exerted by the weight of a column of air above a given point
	Wind Gust The daily highest instantaneous value recorded irrespective of direction and/or duration

Wind Speed for June 2017

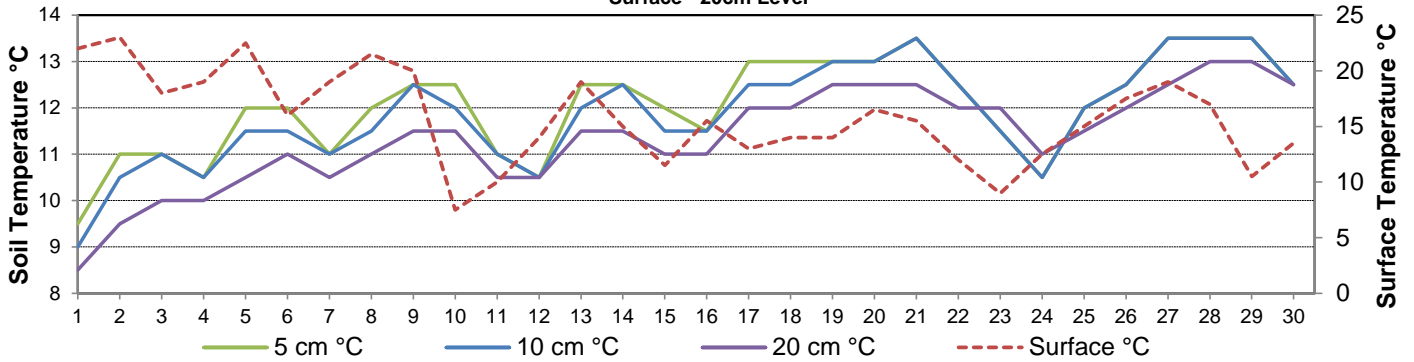


Bright Sunshine, Global and Diffuse Radiation for June 2017



Soil Temperatures for June 2017

Surface - 20cm Level



Soil Temperatures for June 2017

50 - 300cm Level

