



SRC CLIMATE REFERENCE STATION DAILY DATA REPORT



**SASKATOON STATION 4057180**

Saskatchewan 52°09' N 106°36' W 497 m asl Estab. 1963

Preliminary **AUGUST 2015**

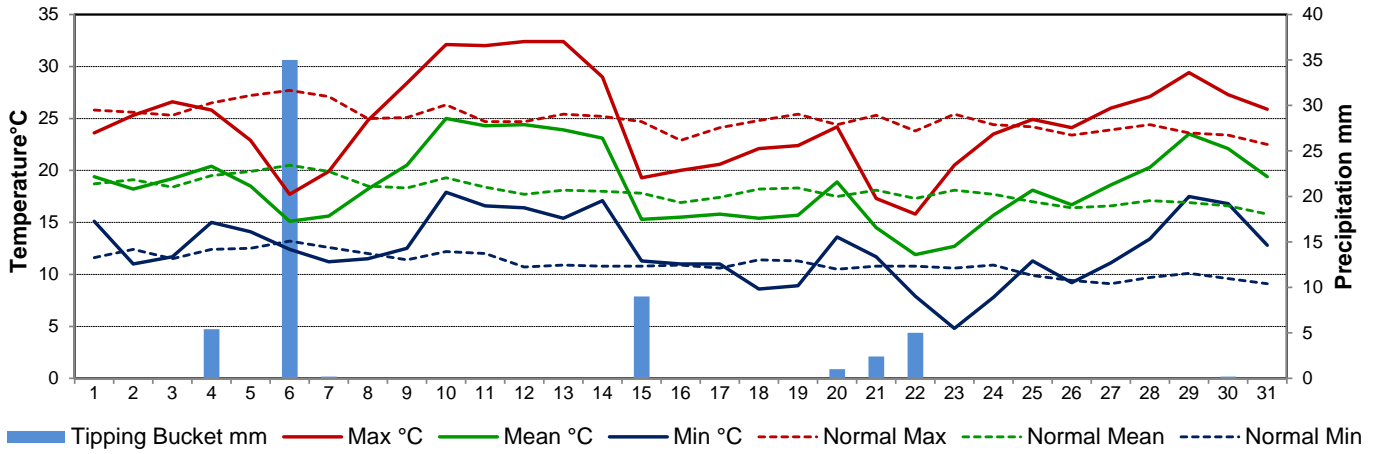
Day	Temperature						Degree-days			Precipitation			Relative Humidity		Station Pressure (sea level)	
	Max	Normal Max	Min	Normal Min	Mean	Normal Mean	Growing	Heating	Cooling	Weighing-Gauge	Tipping Bucket	Remarks	Max ½ hr Avg	Min ½ hr Avg	Max ½ hr Avg	Min ½ hr Avg
	°C	1981-2010	°C	1981-2010	°C	1981-2010	5°C base	18°C base	18°C base	mm	mm		%	%	mbar	mbar
1	23.6	25.8	15.1	11.6	19.4	18.7	14.4	0.0	1.4	m	0.0		82	49	1013	1010
2	25.3	25.6	11.0	12.4	18.2	19.1	13.2	0.0	0.2	m	0.0		92	33	1016	1013
3	26.6	25.3	11.7	11.5	19.2	18.4	14.2	0.0	1.2	m	0.0		90	31	1016	1013
4	25.8	26.5	15.0	12.4	20.4	19.5	15.4	0.0	2.4	m	5.4		82	46	1014	1009
5	22.9	27.2	14.1	12.5	18.5	19.9	13.5	0.0	0.5	m	0.0		94	60	1010	1008
6	17.7	27.7	12.4	13.2	15.1	20.5	10.1	2.9	0.0	m	35.0		96	90	1010	1005
7	19.9	27.1	11.2	12.6	15.6	19.9	10.6	2.4	0.0	m	0.2		95	67	1008	1003
8	24.8	25.0	11.5	12.0	18.2	18.5	13.2	0.0	0.2	m	0.0		96	50	1013	1008
9	28.4	25.1	12.5	11.4	20.5	18.3	15.5	0.0	2.5	m	0.0		93	33	1015	1013
10	32.1	26.3	17.9	12.2	25.0	19.3	20.0	0.0	7.0	m	0.0		78	28	1015	1013
11	32.0	24.7	16.6	12.0	24.3	18.4	19.3	0.0	6.3	m	0.0		90	34	1015	1010
12	32.4	24.7	16.4	10.7	24.4	17.7	19.4	0.0	6.4	m	0.0		94	31	1013	1011
13	32.4	25.4	15.4	10.9	23.9	18.1	18.9	0.0	5.9	m	0.0		92	31	1015	1010
14	29.0	25.2	17.1	10.8	23.1	18.0	18.1	0.0	5.1	m	0.0		89	39	1013	1008
15	19.3	24.7	11.3	10.8	15.3	17.8	10.3	2.7	0.0	m	9.0		92	64	1016	1006
16	20.0	22.9	11.0	10.9	15.5	16.9	10.5	2.5	0.0	m	0.0		93	41	1019	1016
17	20.6	24.1	11.0	10.6	15.8	17.4	10.8	2.2	0.0	m	0.0		88	41	1019	1015
18	22.1	24.8	8.6	11.4	15.4	18.2	10.4	2.6	0.0	m	0.0		91	34	1016	1015
19	22.4	25.4	8.9	11.3	15.7	18.3	10.7	2.3	0.0	m	0.0		90	37	1015	1005
20	24.2	24.4	13.6	10.5	18.9	17.5	13.9	0.0	0.9	m	1.0		91	33	1007	1005
21	17.3	25.3	11.7	10.8	14.5	18.1	9.5	3.5	0.0	m	2.4		89	65	1008	1005
22	15.8	23.8	7.9	10.8	11.9	17.3	6.9	6.1	0.0	m	5.0		93	49	1018	1009
23	20.5	25.4	4.8	10.6	12.7	18.1	7.7	5.3	0.0	m	0.0		92	30	1019	1017
24	23.5	24.4	7.8	10.9	15.7	17.7	10.7	2.3	0.0	m	0.0		84	35	1018	1015
25	24.9	24.2	11.3	9.9	18.1	17.0	13.1	0.0	0.1	m	0.0		93	42	1015	1013
26	24.1	23.4	9.2	9.4	16.7	16.4	11.7	1.3	0.0	m	0.0	smoky haze	95	49	1018	1015
27	26.0	23.9	11.1	9.1	18.6	16.6	13.6	0.0	0.6	m	0.0	smoky haze	95	45	1016	1009
28	27.1	24.4	13.4	9.7	20.3	17.1	15.3	0.0	2.3	m	0.0	smoky haze	93	46	1011	1007
29	29.4	23.6	17.5	10.1	23.5	16.9	18.5	0.0	5.5	m	0.0	smoky haze	68	30	1007	1003
30	27.3	23.4	16.8	9.6	22.1	16.6	17.1	0.0	4.1	m	0.2	smoky haze	78	23	1004	1000
31	25.9	22.5	12.8	9.1	19.4	15.8	14.4	0.0	1.4	m	0.0		63	21	1004	1000
Total							420.9	36.1	54.0	m	58.2		Extreme / Date	Extreme / Date	Extreme / Date	Extreme / Date
Avg	24.6	24.9	12.5	11.0	18.6	18.0	1981-2010 Normal			46.5	Normal					
Extreme Date	32.4		4.8				402.8	50.0	49.8	237.5	Cumulative		96	21	1019	1000
	12		23							273.0	Cumulative No		6	31	16	30

Note: Red numbers indicate manual calculation; Red cell indicate data not available

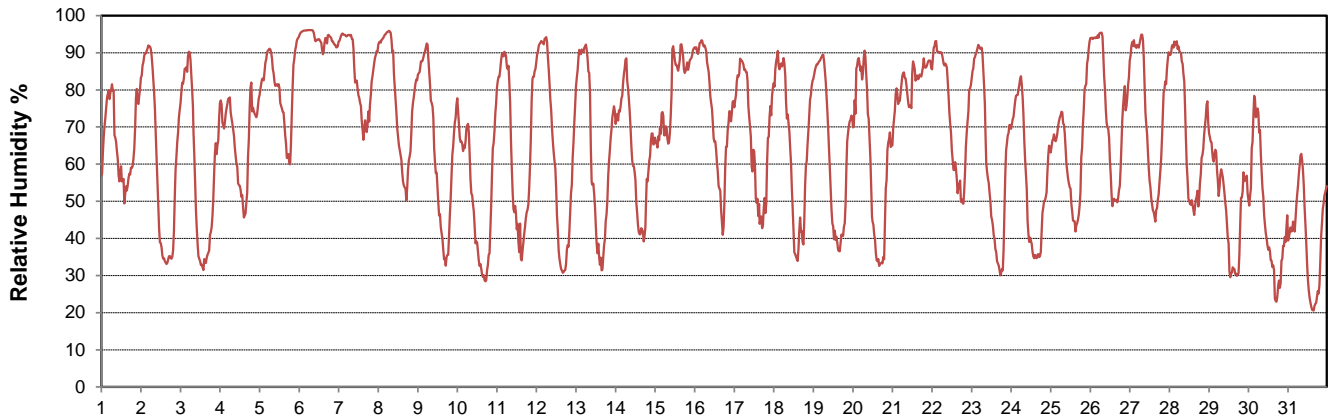
**SRC proudly recognizes the following CRS supporters:**



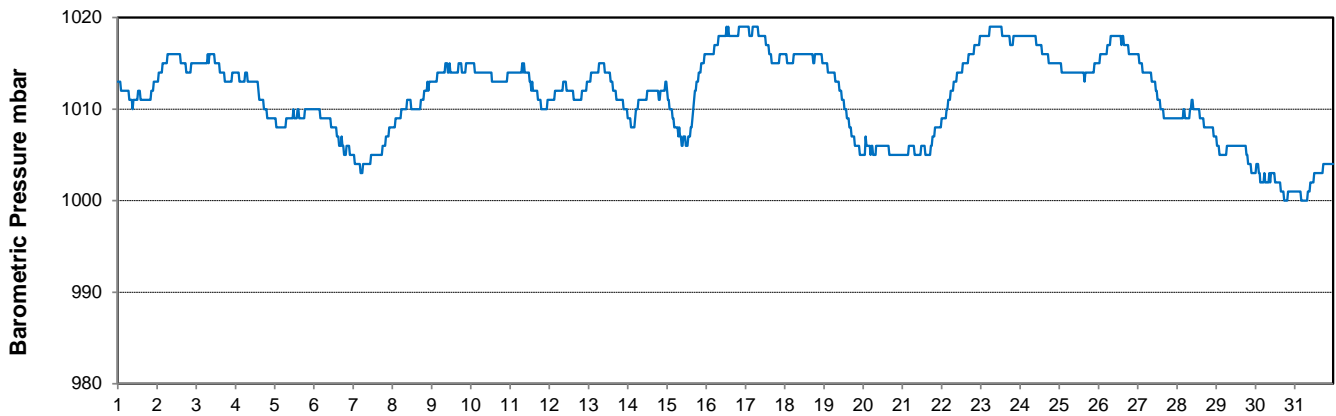
### Temperature and Precipitation for August 2015



### Relative Humidity for August 2015



### Barometric Pressure Corrected to Sea Level for August 2015





SRC CLIMATE REFERENCE STATION DAILY DATA REPORT



**SASKATOON STATION 4057180**

Saskatchewan 52°09' N 106°36' W 497 m asl Estab. 1963

Preliminary **AUGUST 2015**

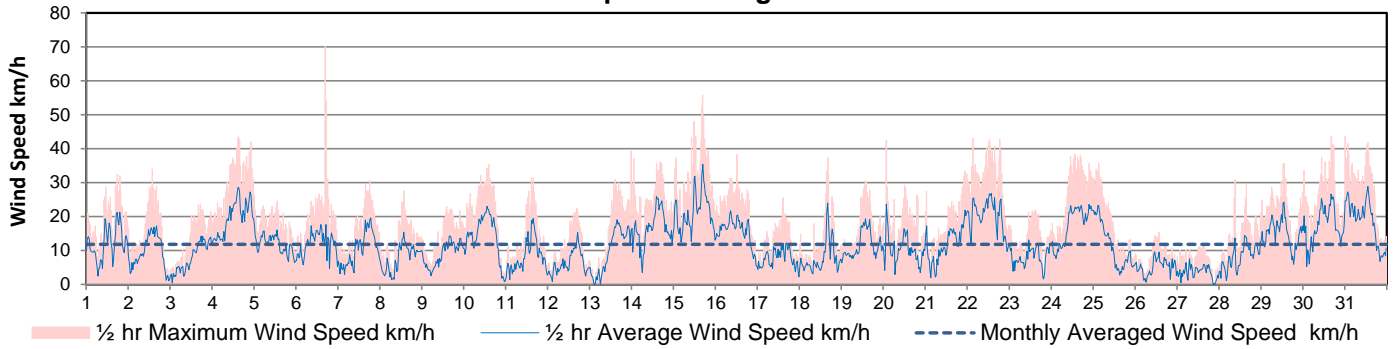
Day	Wind Gust			Soil Temperatures at 0900hrs								Soil Moisture 30 cm	Radiation				
	Max	Direction	Time	Surface	5 cm	10 cm	20 cm	50 cm	100 cm	150 cm	300 cm		0900hrs	Bright Sunshine	Possible	% Possible	Global
	km/h			°C	°C	°C	°C	°C	°C	°C	°C	%	hours	hours		MJ/m <sup>2</sup>	MJ/m <sup>2</sup>
1	32.5	WNW	17:37	19.5	18.5	19.0	19.0	17.5	14.5	13.0	10.0	28	5.2	15.5	33.6	12.4	7.0
2	33.9	NW	13:38	16.5	16.5	17.5	18.0	17.5	14.5	13.0	10.0	28	14.7	15.4	95.2	26.6	2.4
3	23.7	ESE	17:20	19.5	17.5	18.0	18.5	17.5	14.5	13.0	10.5	27	14.6	15.4	94.9	25.2	3.8
4	43.5	ESE	15:27	18.0	19.0	19.5	20.0	18.0	14.5	13.0	10.5	27	4.6	15.3	30.0	12.8	7.9
5	26.2	SE	0:09	17.5	18.5	19.0	19.5	18.0	14.5	13.0	10.5	28	4.0	15.3	26.2	11.3	7.2
6	70.1	SW	17:00	16.0	18.5	19.0	19.0	18.0	14.5	13.5	10.5	27	0.0	15.2	0.0	3.5	2.7
7	30.6	WNW	18:03	12.5	16.0	16.5	17.0	17.5	14.5	13.5	10.5	34	6.2	15.2	40.9	14.5	7.4
8	27.5	NW	13:52	15.0	16.5	17.0	17.5	17.0	14.5	13.5	10.5	32	10.2	15.1	67.5	20.5	6.0
9	22.9	S	14:23	18.0	17.5	18.0	18.0	17.0	14.5	13.5	10.5	31	12.3	15.0	81.8	20.7	4.6
10	35.4	SSW	14:29	22.0	18.5	19.0	19.0	17.5	14.5	13.5	10.5	30	13.8	15.0	92.1	21.2	3.5
11	31.6	SSW	14:53	23.0	19.0	19.5	19.5	18.0	14.5	13.5	10.5	29	11.1	14.9	74.3	18.7	6.4
12	22.4	WSW	23:50	22.0	19.5	20.0	20.0	18.0	14.5	13.5	10.5	29	13.5	14.9	90.8	22.7	3.8
13	39.4	SSE	16:46	21.0	20.0	20.5	20.5	18.5	15.0	13.5	10.5	28	13.5	14.8	91.2	21.9	4.5
14	37.0	N	1:20	21.5	20.5	21.0	21.0	19.0	15.0	13.5	10.5	28	11.7	14.8	79.3	18.2	6.6
15	55.8	NW	16:39	18.0	20.5	21.0	21.0	19.0	15.0	13.5	11.0	27	0.1	14.7	0.7	4.0	3.1
16	38.3	NW	12:07	13.0	16.0	17.0	18.0	18.5	15.5	13.5	11.0	28	5.5	14.6	37.6	14.8	8.0
17	25.5	WNW	14:38	14.5	16.0	17.0	17.5	17.5	15.0	14.0	11.0	27	4.7	14.6	32.3	17.5	6.1
18	37.3	WNW	16:05	14.0	15.0	16.0	17.0	17.5	15.0	14.0	11.0	27	11.8	14.5	81.4	20.8	5.6
19	30.6	SW	13:44	14.5	15.0	16.0	17.0	17.0	15.0	14.0	11.0	26	8.6	14.4	59.6	16.2	6.4
20	42.5	NNW	1:35	16.5	16.5	17.0	17.0	17.0	15.0	14.0	11.0	26	11.3	14.4	78.6	21.0	4.0
21	33.4	N	22:39	14.0	17.0	17.5	18.0	17.0	15.0	14.0	11.0	25	0.4	14.3	2.8	4.2	3.3
22	43.1	NNW	3:14	10.5	14.5	15.5	16.5	16.5	15.0	13.5	11.0	26	3.9	14.3	27.4	10.8	6.5
23	21.8	NW	14:44	11.0	12.0	13.5	15.0	16.0	14.5	13.5	11.0	25	13.9	14.2	98.0	23.2	1.7
24	38.4	SE	13:40	14.5	13.5	14.5	15.0	15.5	14.5	13.5	11.0	25	12.8	14.1	90.7	21.2	3.8
25	35.7	SE	3:17	13.5	14.5	15.0	16.0	15.5	14.5	13.5	11.0	25	11.0	14.1	78.2	16.4	6.7
26	15.5	ENE	13:54	14.5	14.0	15.0	16.0	16.0	14.5	13.5	11.0	24	9.0	14.0	64.3	13.8	7.0
27	11.6	SSE	15:36	15.0	15.0	15.5	16.0	16.0	14.5	13.5	11.0	24	8.8	13.9	63.2	14.5	6.5
28	31.0	N	9:03	16.5	16.0	16.5	16.5	16.0	14.0	13.5	11.5	24	8.7	13.9	62.7	15.5	6.4
29	35.6	WSW	13:21	18.0	17.5	18.0	18.0	16.0	14.0	13.5	11.5	24	10.7	13.8	77.5	16.6	5.2
30	43.7	SW	16:18	18.5	18.0	18.5	18.0	16.5	14.5	13.5	11.5	23	5.8	13.7	42.2	11.5	5.9
31	43.6	SW	0:13	15.0	16.0	16.5	17.5	16.5	14.5	13.5	11.5	22	12.0	13.7	87.8	19.1	3.7
Total													274.4	452.89	60.6	511.3	163.7
Mean				16.6	16.9	17.5	18.0	17.2	14.6	13.5	10.8	27	1981-2010 Normal for Radiation				
Extreme	70.1	SW	17:00	1971- 2000 Normal for Soil Temperatures									271.3	452.5	60.0	542.1	182.4
Date	6				16.5	16.9	18.1	16.8	14.1	12.3	9.1		No. of Bright Sunshine days = 30				

Note: Red numbers indicate manual calculation Recalibrated global radiation pyranometer (PSP) installed August 10th Program change for global pyranometer 17 Aug

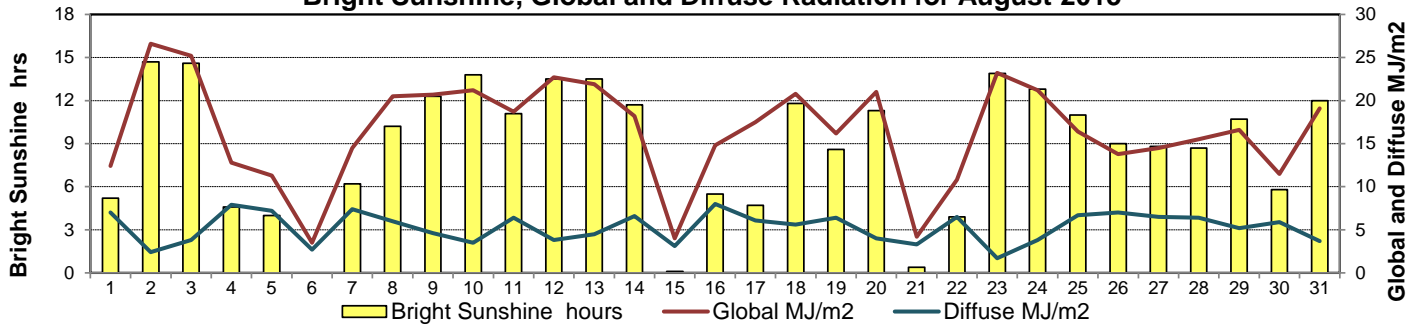
**SRC proudly recognizes the following CRS supporters:**



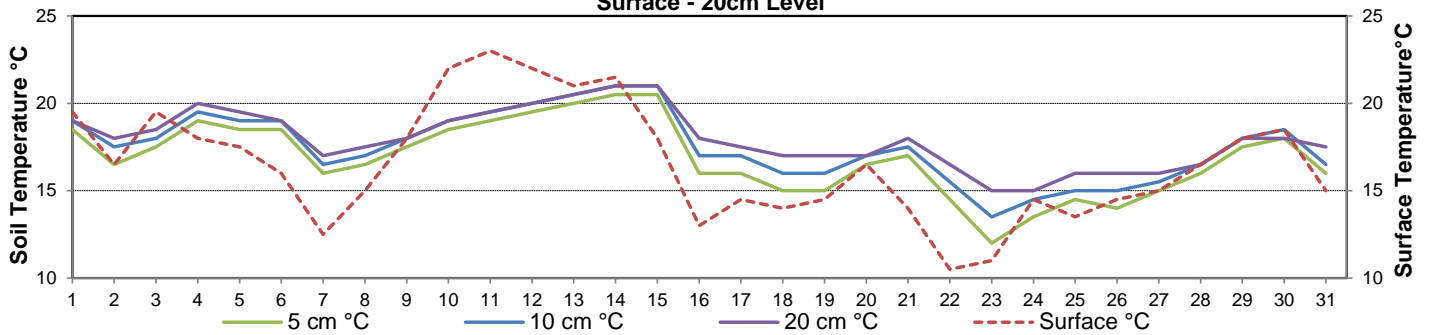
**Wind Speed for August 2015**



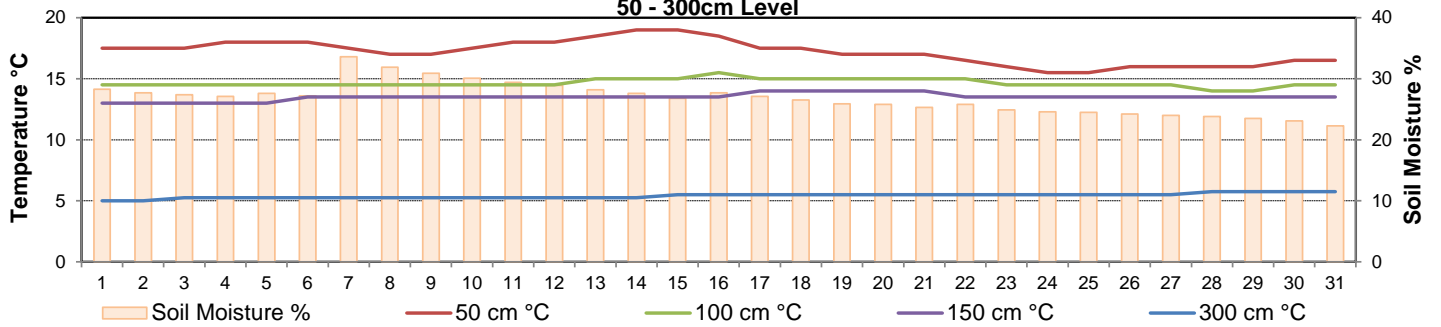
**Bright Sunshine, Global and Diffuse Radiation for August 2015**



**Soil Temperatures for August 2015  
Surface - 20cm Level**



**Soil Temperatures for August 2015  
50 - 300cm Level**





SRC CLIMATE REFERENCE STATION DAILY DATA REPORT



**SASKATOON STATION** 4057180

52°09' N 106°36' W 497 m asl Estab. 1963

Preliminary **AUGUST 2015**

**Extreme Records for August**

Max/Min Temperature °C				Precipitation - Monthly mm				Wind Monthly km/h				CRS Bright Sunshine - Monthly					
S'toon Area	Date	Site	S'toon CRS	Date	S'toon Area	Date	Site	S'toon CRS	Date	S'toon Airport	Date	S'toon CRS**	Date	Hours	Year	No. of Days	Year
39.7	06/1998	SRC	39.7	06/1998	229.8	1953	SF	105.2	2007					360.8	1969	31	1966*
-2.8	23/1901 28/1976	SM SRC	-2.8	28/1976	0.0	1986	SC	7.0	2001	151 <sup>W</sup>	14/1967	129	1985	200.8	1987	27	1992*

\*\*1975 forward \* more than one year

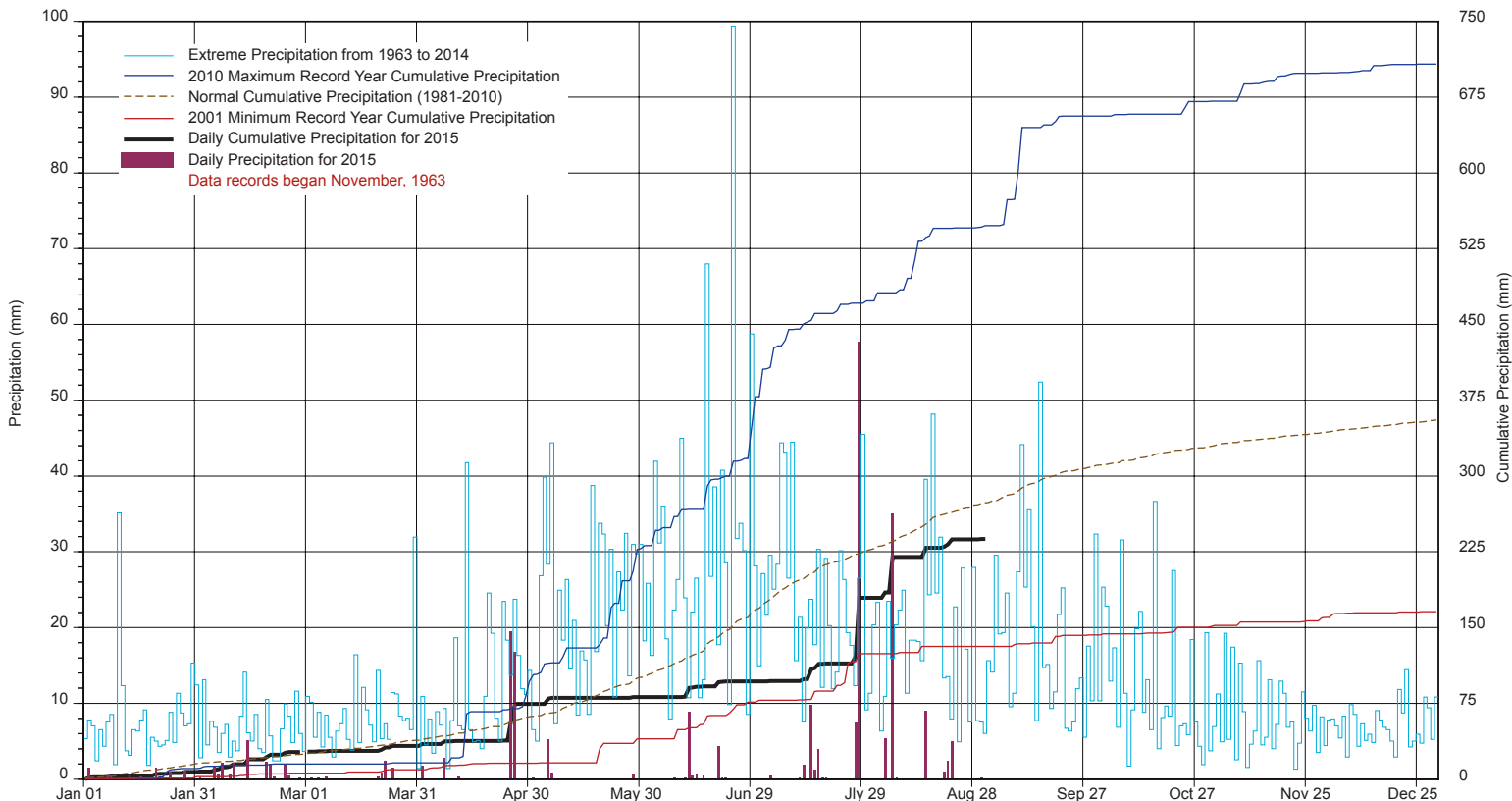
Notable Events for CRS Saskatoon - August						Saskatoon Area Stations			Glossary	
Element	Type	Day	New Record	Old Record	Year	SM	NWMP	c. 1892-1901	T	Trace of precipitation
Precipitation	Greatest Daily	6	35	16	1994	SE	Eby	1901-1941	Normal	30 year average beginning with the decade
						US	Univ. of Sask.	1915-1964	SOG	Depth of snow-on-the-ground in cm
						S	Saskatoon	1941-1942	na	not available
						SA	Saskatoon A	1942 -	<b>Degree-days</b>	
						NRC	Nat. Res. Council	1952-1966	Tm	Mean Temperature
						SRC	Sask. Res. Council	1963-	Growing	(Tm-5°C); if Tm ≤ 5°C then GDD = 0
						SWT	S'toon Water Treatment Plant	1974 -	Heating	(18°C-Tm); if Tm ≤ 18°C then HDD = 0
						SC	S'toon Central Ave	1974-1989	Cooling	(Tm-18°C); if Tm ≥ 18°C then CDD = 0
						S1	Saskatoon 1	1976-1978	Extreme Cooling	(Tm-24°C); if Tm ≥ 24°C then CDD = 0
						S2	Saskatoon 2	1977-1990		
						K	S'toon Kernen Farm	1993-2004		
						KCS	S'toon Kernen Farm CS	1996-		
						RCS	Environment Canada	2008-		
SF	Sutherland Forestry	1943-1970								

Belfort all precipitation gauge decommissioned and removed (19 Aug 2015). It was in operation for 30+ years.

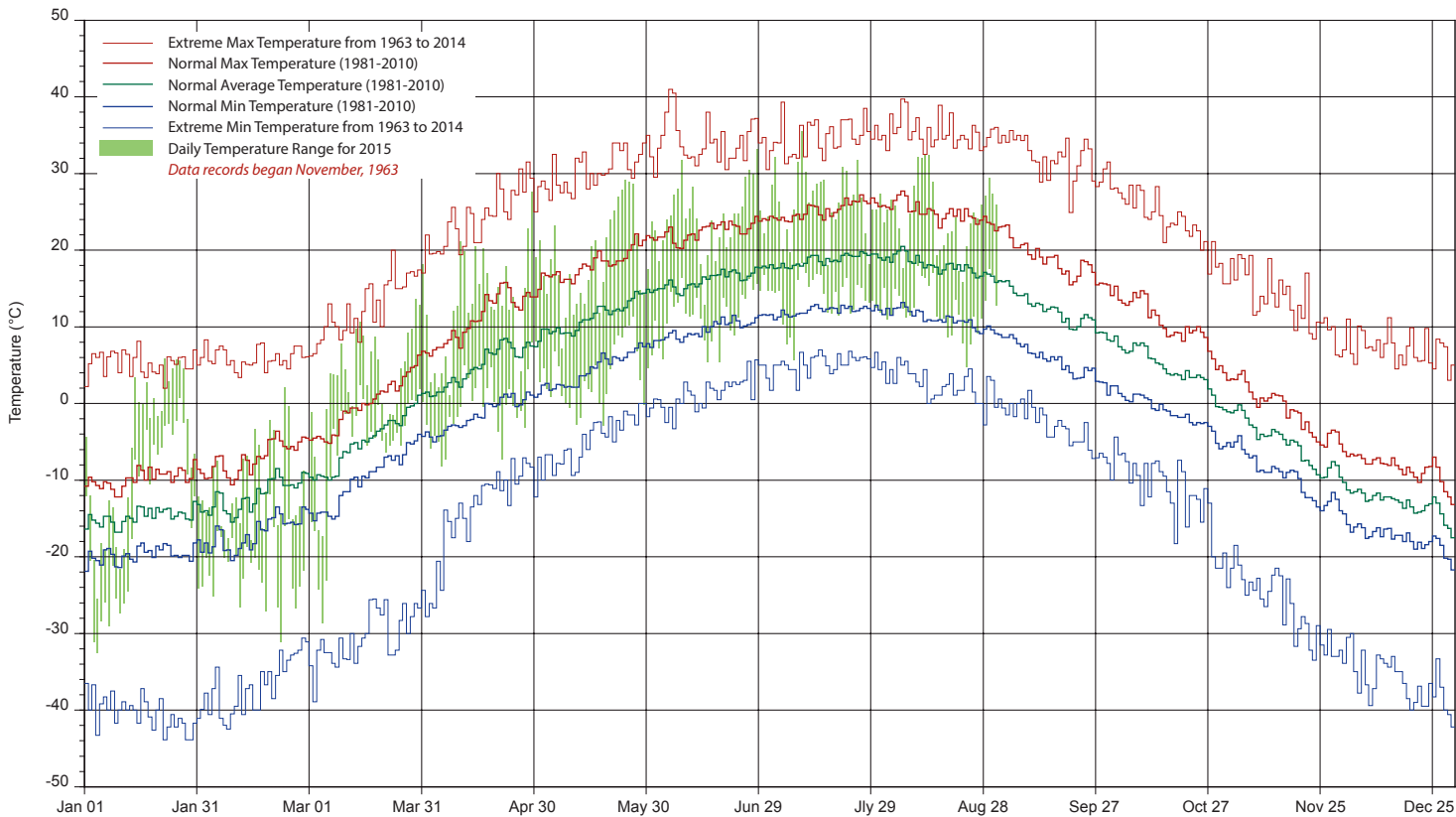
**SRC proudly recognizes the following CRS supporters:**



# SASKATCHEWAN RESEARCH COUNCIL SASKATOON CLIMATE REFERENCE STATION 2015 PRECIPITATION AND NORMALS



## 2015 TEMPERATURES AND NORMALS



SRC proudly recongnizes the following CRS supporters:

