



SRC CLIMATE REFERENCE STATION DAILY DATA REPORT



SASKATOON STATION 4057180

52°09' N 106°36' W 497 m asl Estab. 1963

Preliminary **AUGUST 2014**

Day	Temperature						Degree-days			Precipitation			Relative Humidity		Station Pressure (sea level)	
	Max	Normal Max	Min	Normal Min	Mean	Normal Mean	Growing	Heating	Cooling	Weighing Gauge	Tipping Bucket	Remarks	Max ½ hr Avg	Min ½ hr Avg	Max ½ hr Avg	Min ½ hr Avg
	°C	1981-2010	°C	1981-2010	°C	1981-2010	5°C base	18°C base	18°C base	mm	mm		%	%	mbar	mbar
1	24.9	25.8	13.6	11.6	19.3	18.7	14.3	0.0	1.3	0.0	0.0		94	59	1020	1016
2	25.2	25.6	12.2	12.4	18.7	19.1	13.7	0.0	0.7	0.0	0.0		97	40	1022	1019
3	29.1	25.3	14.4	11.5	21.8	18.4	16.8	0.0	3.8	0.0	0.0		90	39	1019	1016
4	28.0	26.5	16.8	12.4	22.4	19.5	17.4	0.0	4.4	0.0	0.0		94	58	1017	1015
5	28.6	27.2	15.4	12.5	22.0	19.9	17.0	0.0	4.0	0.0	0.0		95	49	1016	1014
6	27.6	27.7	17.5	13.2	22.6	20.5	17.6	0.0	4.6	0.0	0.0		91	49	1014	1010
7	28.6	27.1	16.8	12.6	22.7	19.9	17.7	0.0	4.7	0.0	0.0		95	42	1011	1009
8	27.9	25.0	14.1	12.0	21.0	18.5	16.0	0.0	3.0		1.0		92	41	1013	1009
9	22.1	25.1	12.9	11.4	17.5	18.3	12.5	0.5	0.0		0.2		96	42	1020	1010
10	24.3	26.3	10.2	12.2	17.3	19.3	12.3	0.7	0.0	0.0	0.0		94	41	1022	1020
11	29.1	24.7	13.8	12.0	21.5	18.4	16.5	0.0	3.5	0.0	0.0		84	32	1022	1017
12	29.3	24.7	14.5	10.7	21.9	17.7	16.9	0.0	3.9	0.0	0.0		93	35	1018	1016
13	26.3	25.4	16.9	10.9	21.6	18.1	16.6	0.0	3.6	0.2	0.0		89	57	1016	1010
14	30.3	25.2	17.3	10.8	23.8	18.0	18.8	0.0	5.8	0.0	0.0		92	49	1011	1009
15	27.7	24.7	15.2	10.8	21.5	17.8	16.5	0.0	3.5	0.0	0.0		93	41	1014	1011
16	24.3	22.9	13.1	10.9	18.7	16.9	13.7	0.0	0.7	0.0	0.0		94	65	1014	1010
17	25.5	24.1	16.4	10.6	21.0	17.4	16.0	0.0	3.0	18.9	15.8		96	58	1013	1008
18	28.8	24.8	14.1	11.4	21.5	18.2	16.5	0.0	3.5	0.0	0.0		96	31	1010	1006
19	30.8	25.4	14.7	11.3	22.8	18.3	17.8	0.0	4.8	1.2	1.0		92	31	1005	1001
20	23.5	24.4	14.3	10.5	18.9	17.5	13.9	0.0	0.9	15.4	13.4		95	62	1010	1001
21	20.8	25.3	13.2	10.8	17.0	18.1	12.0	1.0	0.0	0.1	0.0		95	60	1020	1010
22	19.1	23.8	11.2	10.8	15.2	17.3	10.2	2.8	0.0	0.0	0.0		88	48	1024	1020
23	16.0	25.4	11.3	10.6	13.7	18.1	8.7	4.3	0.0	0.0	0.0		95	62	1024	1020
24	11.6	24.4	9.2	10.9	10.4	17.7	5.4	7.6	0.0	7.1	5.0		89	76	1020	1013
25	18.5	24.2	4.9	9.9	11.7	17.0	6.7	6.3	0.0	1.3	0.0		96	36	1016	1014
26	25.2	23.4	7.9	9.4	16.6	16.4	11.6	1.4	0.0	0.0	0.0		84	34	1016	1013
27	30.9	23.9	13.5	9.1	22.2	16.6	17.2	0.0	4.2		0.0		87	27	1012	1008
28	23.2	24.4	11.6	9.7	17.4	17.1	12.4	0.6	0.0		0.0	Belfort Repair	95	39	1013	1009
29	20.8	23.6	6.7	10.1	13.8	16.9	8.8	4.2	0.0	0.0	0.0		97	36	1016	1009
30	22.1	23.4	12.1	9.6	17.1	16.6	12.1	0.9	0.0	1.1	2.4		90	49	1009	1001
31	22.9	22.5	8.0	9.1	15.5	15.8	10.5	2.5	0.0	1.5	1.6		94	34	1006	1004
Total							434.1	32.8	63.9	46.8	40.4		Extreme / Date	Extreme / Date	Extreme / Date	Extreme / Date
Avg	24.9	24.9	13.0	11.0	19.0	18.0	1981-2010 Normal			46.5	Normal					
Extreme Date	30.9		4.9				402.8	50.0	49.8	385.6	Cumulative		97	27	1024	1001
	27		25							273.0	Cumulative No		2	27	22	19

Note: Red numbers indicate manual calculation; Red cell indicate data not available

SRC proudly recognizes the following CRS supporters:

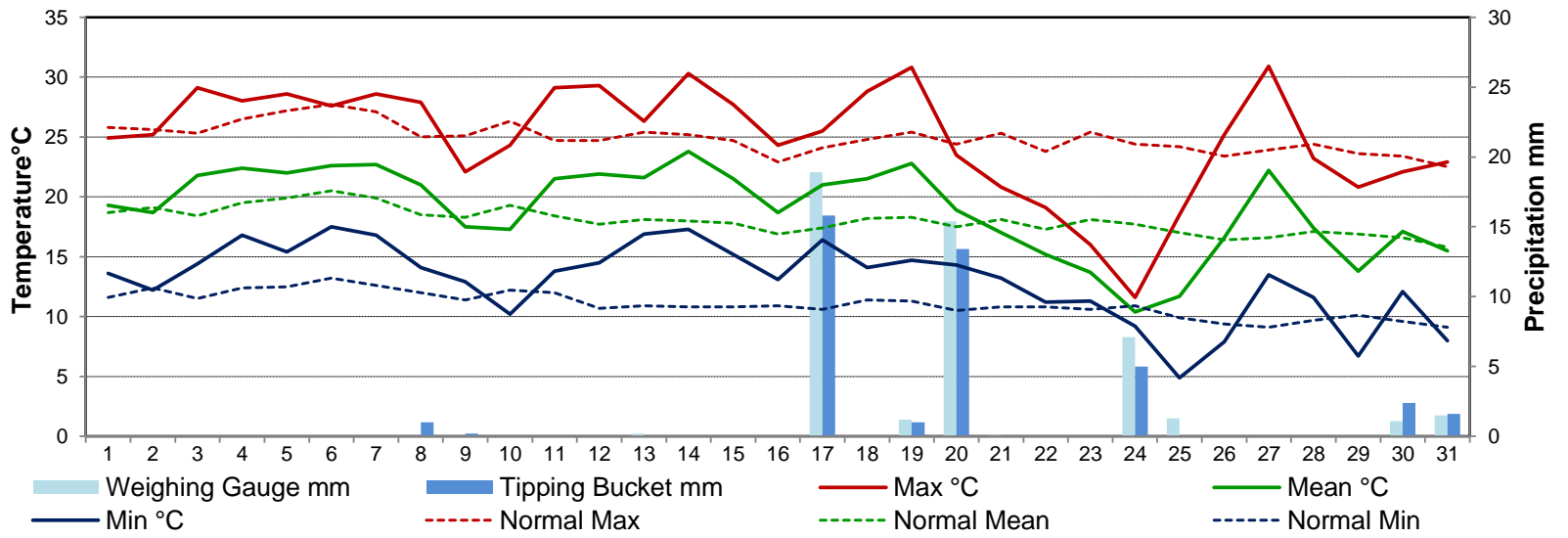


Agriculture and Agri-Food Canada

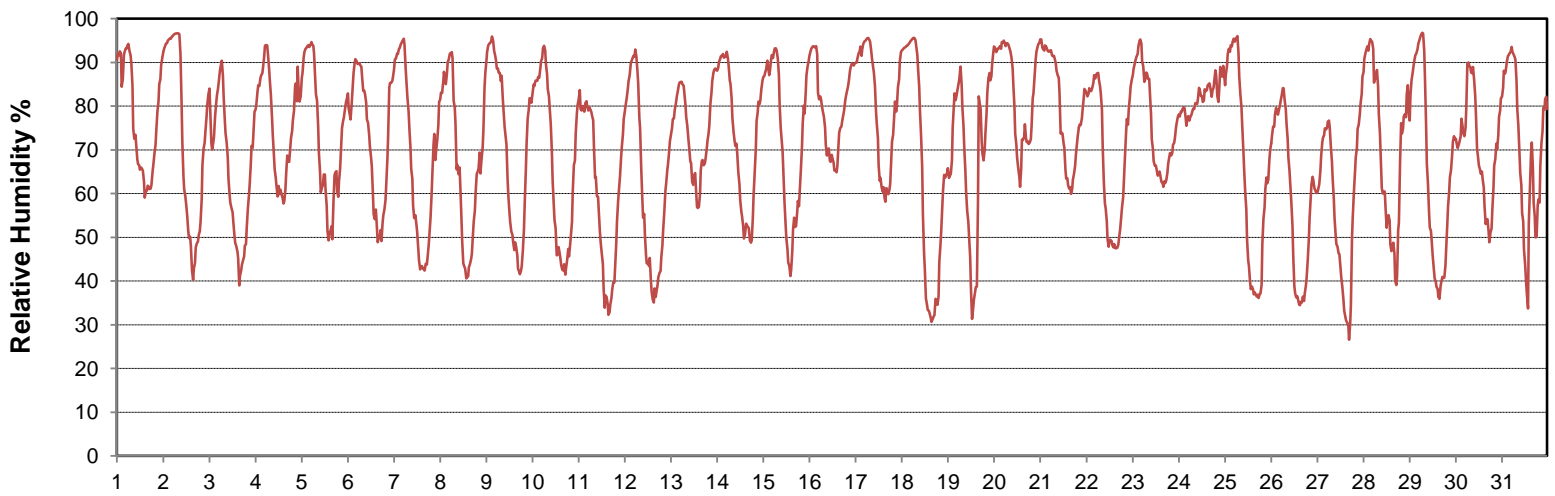
Agriculture et Agroalimentaire Canada



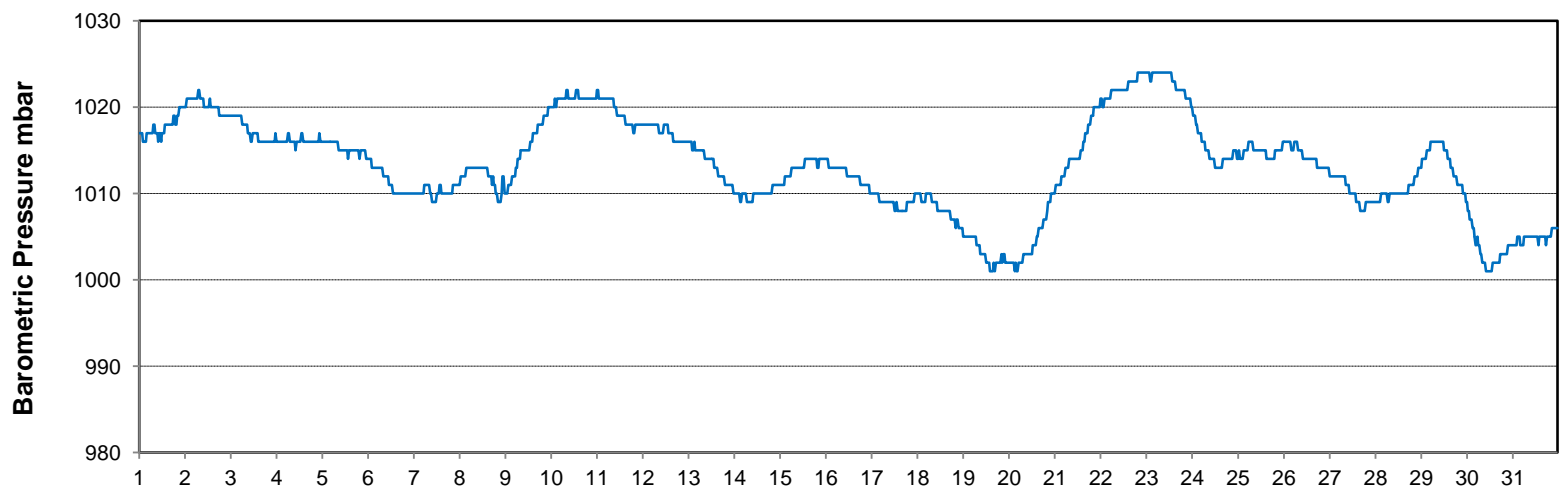
Temperature and Precipitation for August 2014



Relative Humidity for August 2014



Barometric Pressure Corrected to Sea Level for August 2014





SRC CLIMATE REFERENCE STATION DAILY DATA REPORT



SASKATOON STATION 4057180

52°09' N 106°36' W 497 m asl Estab. 1963

Preliminary AUGUST 2014

Day	Wind Gust			Soil Temperatures at 0900hrs								Soil Moisture 30 cm 0900hrs	Radiation				
	Max	Direction	Time	Surface	5 cm	10 cm	20 cm	50 cm	100 cm	150 cm	300 cm		Bright Sunshine	Possible	% Possible	Global	Diffuse
	km/h			°C	°C	°C	°C	°C	°C	°C	°C		hours	hours		MJ/m ²	MJ/m ²
1	32.7	N	14:18	17.0	20.0	21.5	20.0	19.0	14.5	13.0	9.5	23	11.5	15.5	74.3	17.2	8.0
2	23.4	E	17:07	13.0	19.5	20.5	19.5	19.0	15.0	13.0	9.5	22	12.8	15.4	83.1	21.5	6.9
3	24.2	S	13:00	16.0	19.5	21.0	19.5	19.0	15.0	13.0	9.5	21	13.1	15.4	85.3	21.4	5.4
4	20.8	NE	12:40	17.5	21.0	22.0	20.0	19.5	15.0	13.0	10.0	21	8.3	15.3	54.2	15.8	6.8
5	30.6	SSW	14:46	17.5	21.0	22.0	20.0	19.5	15.0	13.0	10.0	20	8.3	15.2	54.5	15.6	8.2
6	27.1	SSE	11:42	15.0	21.5	22.5	20.5	19.5	15.0	13.5	10.0	20	9.6	15.2	63.2	17.2	6.3
7	26.0	WSW	7:53	15.5	20.5	22.0	20.0	19.5	15.5	13.5	10.0	20	11.4	15.1	75.3	21.0	5.5
8	54.3	W	22:49	15.5	20.5	21.5	20.5	19.5	15.5	13.5	10.0	19	8.1	15.1	53.7	16.8	6.1
9	51.1	WNW	14:10	12.5	19.5	20.5	20.0	19.0	15.5	13.5	10.0	19	10.4	15.0	69.3	19.6	4.7
10	20.0	W	15:35	13.0	17.5	18.5	18.5	19.0	15.5	13.5	10.0	18	8.6	15.0	57.5	16.1	9.3
11	34.2	WSW	14:58	15.5	18.0	19.5	18.5	18.5	15.5	13.5	10.0	18	11.6	14.9	77.9	21.2	3.8
12	21.5	SE	16:21	18.5	19.0	20.0	19.0	19.0	15.5	13.5	10.0	18	10.7	14.8	72.1	15.7	3.6
13	36.1	ESE	18:15	18.5	19.5	20.0	19.5	18.5	15.0	13.5	10.5	18	6.4	14.8	43.3	12.0	7.9
14	23.9	N	16:55	19.0	20.0	20.5	19.5	19.0	15.5	13.5	10.5	17	13.4	14.7	91.0	18.9	5.3
15	31.3	NE	13:48	17.5	20.5	21.5	20.0	19.0	15.5	14.0	10.5	17	10.7	14.7	73.0	16.1	7.2
16	33.9	SE	15:11	18.5	19.5	20.0	19.5	18.5	15.0	14.0	10.5	17	3.0	14.6	20.6	9.2	7.0
17	32.0	NNW	16:31	17.0	19.5	20.0	19.5	18.5	15.5	14.0	10.5	22	6.8	14.5	46.8	16.4	7.3
18	26.7	W	14:09	15.0	19.0	20.0	19.5	19.0	15.5	14.0	10.5	21	11.7	14.5	80.9	19.2	5.3
19	52.5	NNW	15:39	17.0	19.5	20.5	19.5	19.0	15.5	14.0	10.5	20	10.0	14.4	69.4	16.6	5.7
20	50.6	WSW	3:46	14.5	19.0	19.5	19.0	18.5	15.5	14.0	10.5	26	7.0	14.4	48.8	13.3	6.4
21	34.4	N	15:17	12.5	18.5	19.5	19.0	18.5	15.5	14.0	10.5	25	5.4	14.3	37.8	12.5	7.3
22	31.0	NNE	9:50	11.5	17.0	18.0	18.0	18.5	15.5	14.0	11.0	24	6.4	14.2	45.0	13.1	8.3
23	38.2	NE	16:06	11.0	16.5	17.5	17.0	17.5	15.5	14.0	11.0	23	0.2	14.2	1.4	9.1	7.4
24	53.6	NE	15:10	7.5	15.0	16.0	16.0	17.0	15.5	14.0	11.0	22	0.0	14.1	0.0	3.6	3.1
25	22.9	NNW	13:22	7.0	12.0	13.5	14.0	16.5	15.0	14.0	11.0	23	13.1	14.0	93.4	20.3	2.9
26	36.7	SW	12:43	12.0	13.0	14.0	14.5	16.0	15.0	14.0	11.0	22	13.1	14.0	93.8	19.3	3.7
27	31.8	NE	18:47	16.0	15.5	16.0	15.5	16.0	15.0	14.0	11.0	22	12.0	13.9	86.3	18.6	2.8
28	39.9	NNW	10:19	15.0	16.5	17.5	16.5	16.5	14.5	13.5	11.0	22	8.6	13.8	62.1	16.3	5.0
29	28.4	SE	23:37	11.5	15.0	16.0	16.5	16.5	14.5	13.5	11.0	21	11.8	13.8	85.7	18.7	2.7
30	35.3	SE	1:46	13.0	15.5	16.5	16.5	16.5	14.5	13.5	11.0	21	8.4	13.7	61.3	13.7	5.0
31	37.8	W	14:12	11.5	13.5	15.0	16.0	16.5	14.5	13.5	11.0	21	9.2	13.6	67.4	14.0	2.9
Total													281.6	451.99	62.3	500.0	177.8
Mean				14.6	18.1	19.1	18.4	18.3	15.2	13.6	10.4	21	1981-2010 Normal for Radiation				
Extreme	54.3	W	22:49	1971-2000 Normal for Soil Temperatures									271.3	452.5	60.0	542.1	182.4
Date	8			16.5	16.9	18.1	16.8	14.1	12.3	9.1		No. of Bright Sunshine days = 30					

Note: Red numbers indicate manual calculation

SRC proudly recognizes the following CRS supporters:

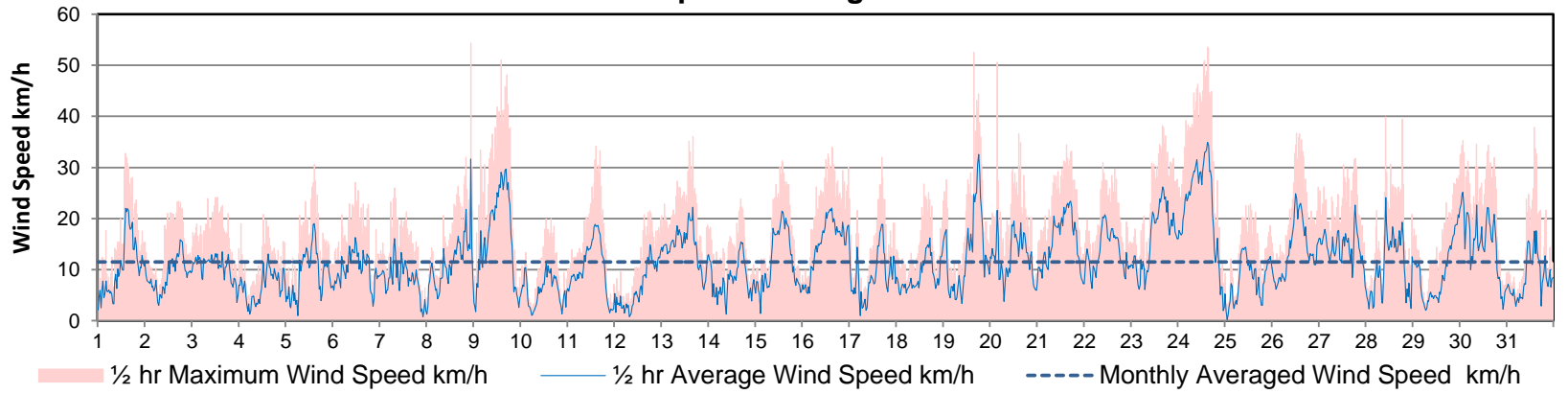


Agriculture and Agri-Food Canada

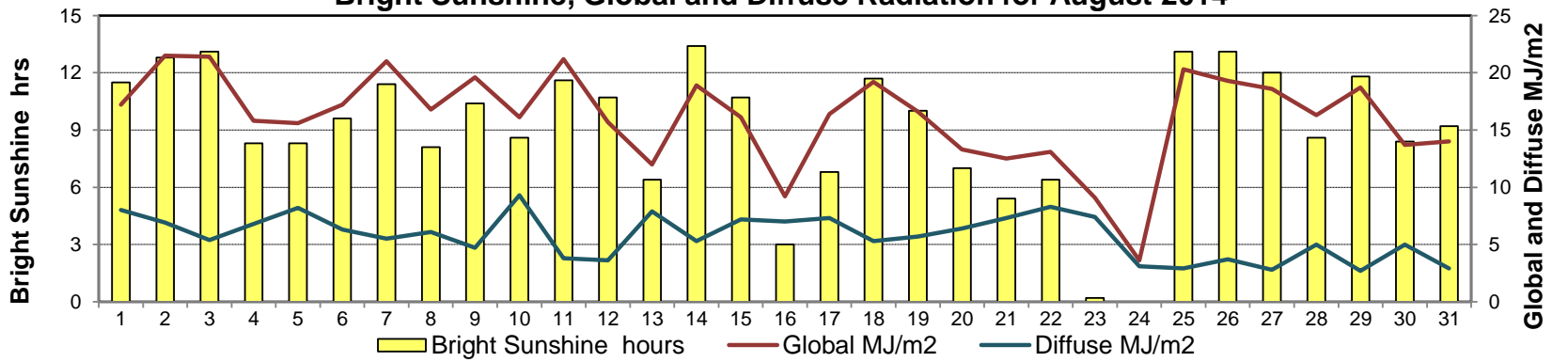
Agriculture et Agroalimentaire Canada



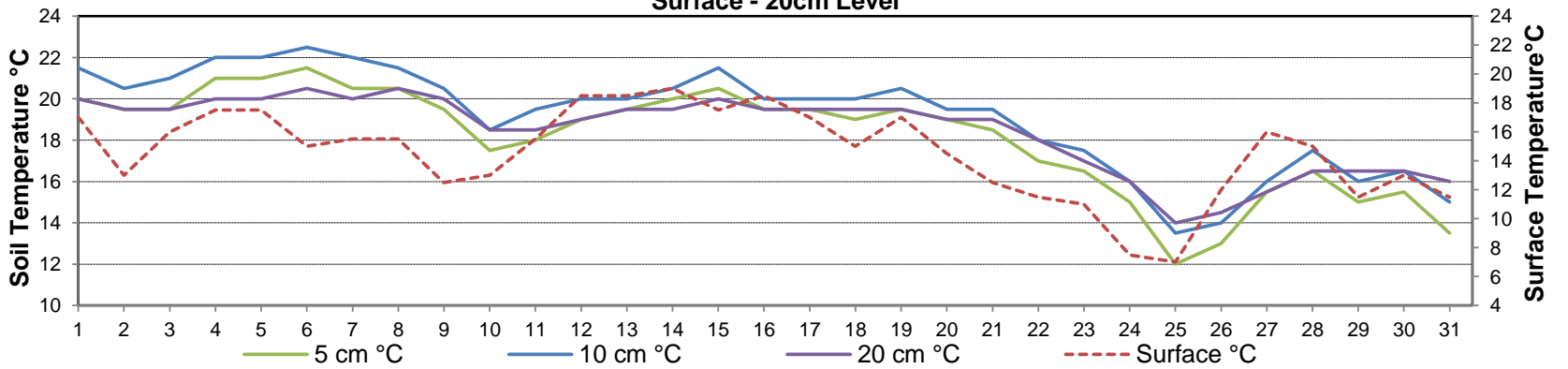
Wind Speed for August 2014



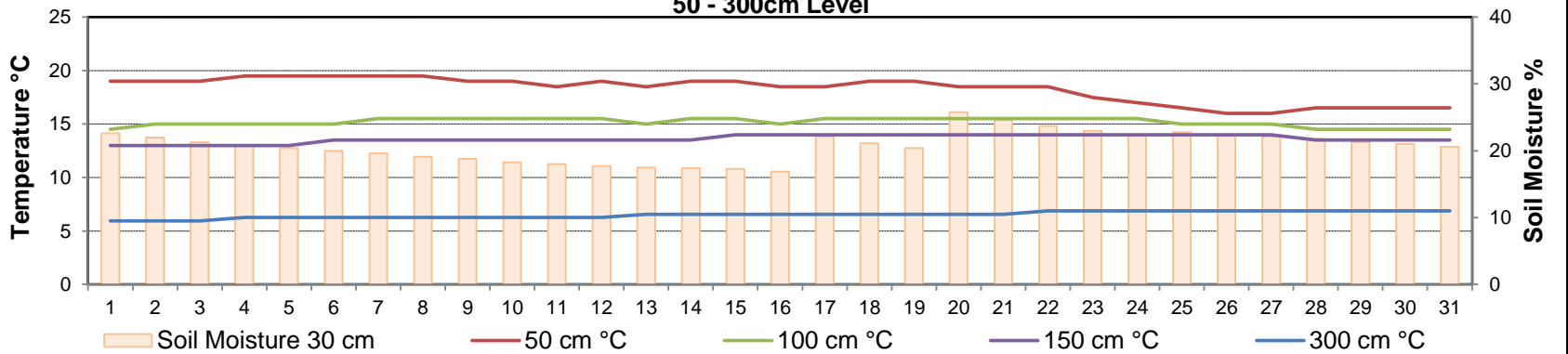
Bright Sunshine, Global and Diffuse Radiation for August 2014



Soil Temperatures for August 2014 Surface - 20cm Level



Soil Temperatures for August 2014 50 - 300cm Level





SRC CLIMATE REFERENCE STATION DAILY DATA REPORT



SASKATOON STATION 4057180

52°09' N 106°36' W 497 m asl Estab. 1963

Preliminary **AUGUST 2014**

Extreme Records for August

Max/Min Temperature °C			Precipitation - Monthly mm			Wind Monthly km/h			CRS Bright Sunshine - Monthly								
S'toon Area	Date	Site	S'toon CRS	Date	S'toon Area	Date	Site	S'toon CRS	Date	S'toon Airport	Date	S'toon CRS**	Date	Hours	Year	No. of Days	Year
39.7	06/1998	SRC	39.7	06/1998	229.8	1953	SF	105.2	2007					360.8	1969	31	1966*
-2.8	23/1901 28/1976	SM SRC	-2.8	28/1976	0.0	1986	SC	7.0	2001	151 ^W	14/1967	129	1985	200.8	1987	27	1992*

**1975 forward * more than one year

Notable Events for CRS Saskatoon - August						Saskatoon Area Stations			Glossary	
Element	Type	Day	New Record	Old Record	Year	SM	NWMP	c. 1892-1901	T	Trace of precipitation
Temperature	Lowest Maximum Daily	24	11.6	13.0	1992	SE	Eby	1901-1941	Normal	30 year average beginning with the decade
	Highest Minimum Daily	14	17.3	17	1991	US	Univ. of Sask.	1915-1964	SOG	Depth of snow-on-the-ground in cm
Precipitation	Daily Max	20	13.4	5.6	1988	S	Saskatoon	1941-1942	na	not available
		24	5	4.4	2005	SA	Saskatoon A	1942 -	Degree-days	
						NRC	Nat. Res. Council	1952-1966	Tm	Mean Temperature
						SRC	Sask. Res. Council	1963-	Growing	(Tm-5°C); if Tm ≤ 5°C then GDD = 0
						SWT	S'toon Water Treatment Plant	1974 -	Heating	(18°C-Tm); if Tm ≤ 18°C then HDD = 0
						SC	S'toon Central Ave	1974-1989	Cooling	(Tm-18°C); if Tm ≥ 18°C then CDD = 0
						S1	Saskatoon 1	1976-1978	Extreme Cooling	(Tm-24°C); if Tm ≥ 24°C then CDD = 0
						S2	Saskatoon 2	1977-1990	NOTES: New Potentiometer installed into Belfort Weighing Gauge. Instrument was cleaned, lubricated and calibrated (Aug 27-28)	
					K	S'toon Kernen Farm	1993-2004			
					KCS	S'toon Kernen Farm CS	1996-			
					RCS	Environment Canada	2008-			
						SF	Sutherland Forestry	1943-1970		

SRC proudly recognizes the following CRS supporters:

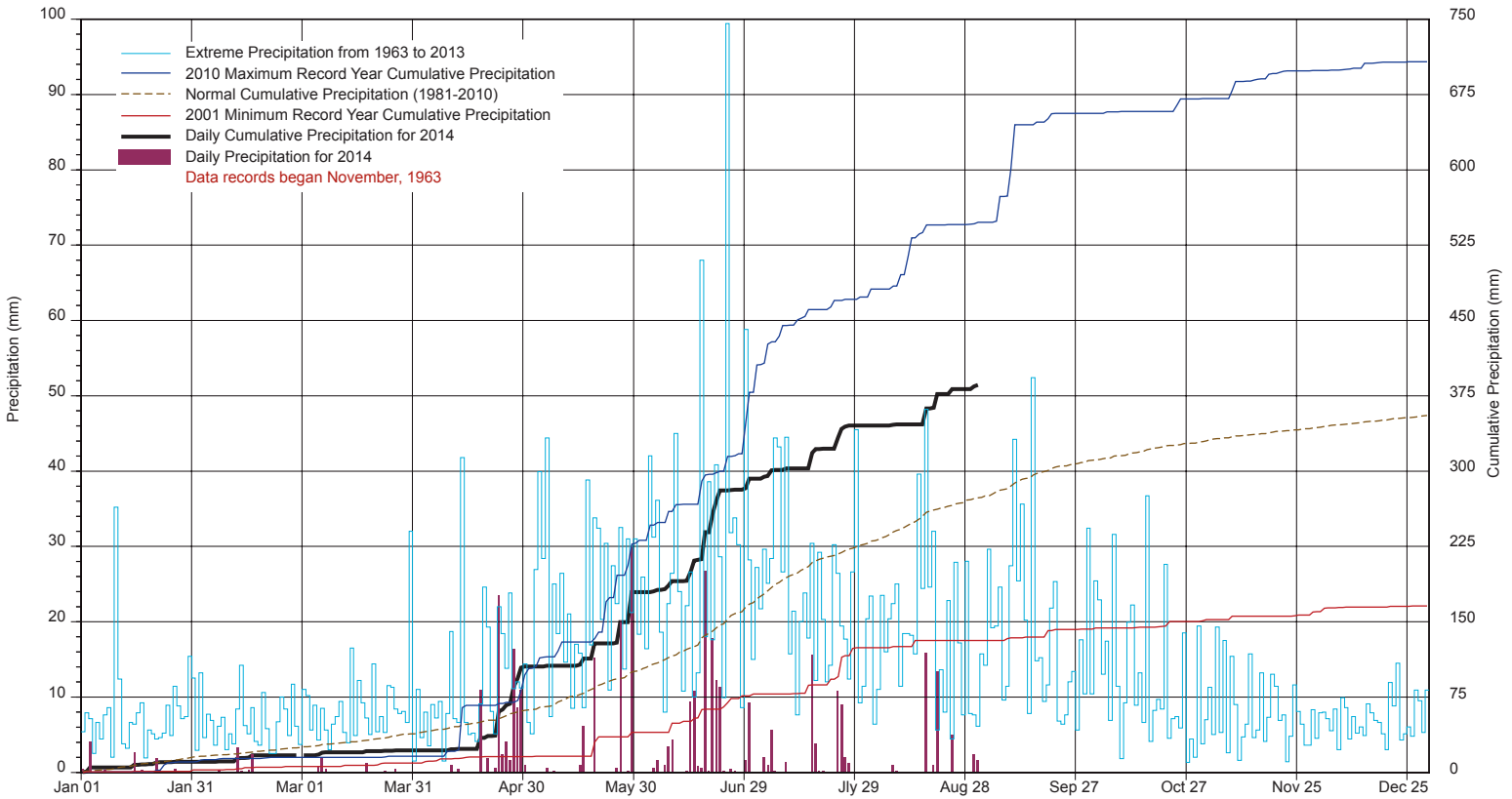


Agriculture and Agri-Food Canada

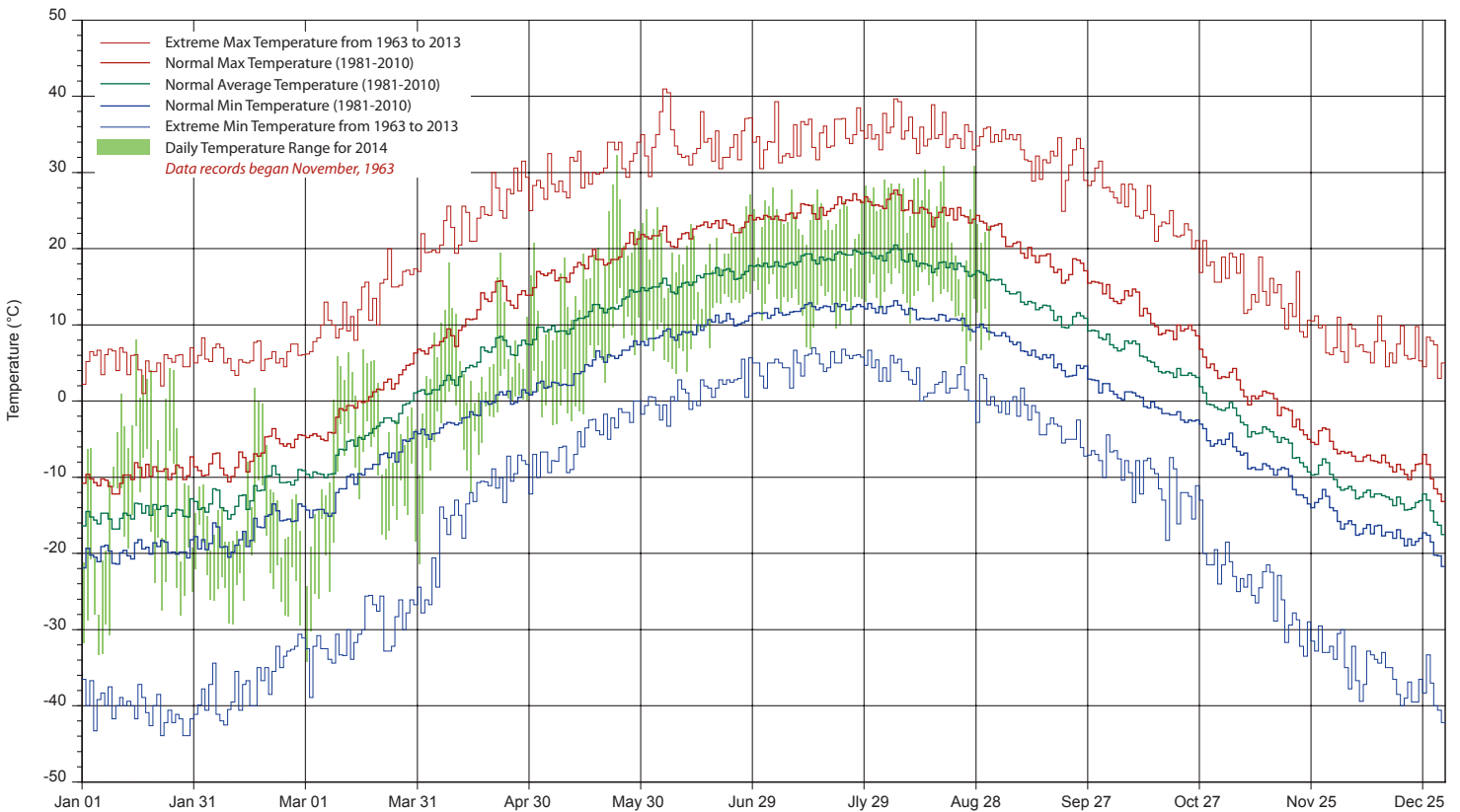
Agriculture et Agroalimentaire Canada



SASKATCHEWAN RESEARCH COUNCIL SASKATOON CLIMATE REFERENCE STATION 2014 PRECIPITATION AND NORMALS



2014 TEMPERATURES AND NORMALS



SRC proudly recognizes the following CRS supporters:



Agriculture and
Agri-Food Canada

Agriculture et
Agroalimentaire Canada

