



SRC CLIMATE REFERENCE STATION DAILY DATA REPORT

SASKATOON STATION 4057180

52°09' N 106°36' W 497 m asl Estab. 1963

Preliminary **DECEMBER 2014**

Day	Temperature						Degree-days			Precipitation			Relative Humidity		Station Pressure (sea level)	
	Max	Normal Max	Min	Normal Min	Mean	Normal Mean	Growing	Heating	Cooling	Weighing Gauge	Comments	Snow-on-Ground 0900h	Max ½ hr Avg	Min ½ hr Avg	Max ½ hr Avg	Min ½ hr Avg
	°C	1981-2010	°C	1981-2010	°C	1981-2010	5°C base	18°C base	18°C base	mm		cm	%	%	mbar	mbar
1	-15.1	-5.3	-26.2	-14.0	-20.7	-9.6	0.0	38.7	0.0	0.0		5	79	64	1024	1010
2	-9.9	-6.3	-21.4	-14.4	-15.7	-10.3	0.0	33.7	0.0	0.2	light snow	5	90	70	1016	1009
3	-7.6	-6.9	-21.9	-15.8	-14.8	-11.3	0.0	32.8	0.0	0.0	manual snow depth	9	88	65	1018	1009
4	-7.9	-6.6	-13.3	-16.8	-10.6	-11.7	0.0	28.6	0.0	0.0	manual snow depth	9	86	69	1015	1008
5	-6.3	-6.8	-11.2	-16.1	-8.8	-11.5	0.0	26.8	0.0	0.0			95	83	1026	1015
6	-5.0	-6.7	-11.8	-15.7	-8.4	-11.2	0.0	26.4	0.0	0.0			95	87	1026	1011
7	-5.7	-7.2	-8.0	-16.2	-6.9	-11.7	0.0	24.9	0.0	0.0			92	87	1021	1011
8	-5.9	-7.9	-8.9	-17.6	-7.4	-12.8	0.0	25.4	0.0	0.0			94	79	1024	1014
9	4.4	-7.9	-8.6	-17.4	-2.1	-12.6	0.0	20.1	0.0	0.0			92	71	1014	1001
10	6.9	-7.3	0.8	-16.7	3.9	-12.0	0.0	14.1	0.0	0.0			82	68	1007	1001
11	8.3	-7.1	1.6	-16.2	5.0	-11.7	0.0	13.0	0.0	0.0			88	61	1003	998
12	6.0	-7.8	1.0	-17.4	3.5	-12.6	0.0	14.5	0.0	0.0	manual snow depth	3	86	69	1004	999
13	2.0	-7.9	-3.2	-16.4	-0.6	-12.2	0.0	18.6	0.0	0.0			99	87	1014	1004
14	-0.8	-8.1	-3.7	-16.3	-2.3	-12.2	0.0	20.3	0.0	0.0			98	86	1022	1015
15	-2.4	-7.1	-5.1	-17.7	-3.8	-12.4	0.0	21.8	0.0	0.0			92	81	1025	1022
16	-4.8	-8.1	-7.1	-17.2	-6.0	-12.6	0.0	24.0	0.0	0.0			89	82	1024	1020
17	-6.8	-8.6	-8.1	-17.2	-7.5	-12.9	0.0	25.5	0.0	0.0		3	94	84	1023	1014
18	-4.4	-9.3	-7.4	-18.0	-5.9	-13.7	0.0	23.9	0.0	0.0		2	97	93	1014	1010
19	-7.4	-8.3	-9.2	-16.9	-8.3	-12.6	0.0	26.3	0.0	0.0	ice fog	3	95	94	1013	1009
20	-5.2	-9.0	-8.8	-18.0	-7.0	-13.5	0.0	25.0	0.0	0.2	ice fog	3	97	94	1009	1002
21	-3.6	-9.6	-7.3	-19.0	-5.5	-14.3	0.0	23.5	0.0	0.0	ice fog	3	98	95	1001	994
22	-4.1	-10.3	-6.3	-18.1	-5.2	-14.2	0.0	23.2	0.0	0.2	ice fog	3	98	95	1016	1000
23	-2.9	-9.1	-6.5	-18.9	-4.7	-14.0	0.0	22.7	0.0	0.0	lite snow am	3	96	85	1018	1006
24	-1.7	-8.3	-6.2	-18.4	-4.0	-13.3	0.0	22.0	0.0	0.3		3	94	80	1005	996
25	-4.2	-8.2	-20.0	-18.0	-12.1	-13.1	0.0	30.1	0.0	0.3		4	91	74	1019	1002
26	-9.9	-7.0	-18.8	-17.3	-14.4	-12.2	0.0	32.4	0.0	0.0		4	90	78	1020	1016
27	-10.1	-8.3	-29.1	-17.6	-19.6	-13.0	0.0	37.6	0.0	0.5		4	91	75	1021	1015
28	-21.5	-10.2	-30.3	-18.5	-25.9	-14.4	0.0	43.9	0.0	0.0		5	82	76	1036	1021
29	-21.3	-11.5	-26.8	-20.2	-24.1	-15.9	0.0	42.1	0.0	0.0		5	82	73	1043	1037
30	-10.1	-12.2	-26.0	-20.3	-18.1	-16.3	0.0	36.1	0.0	0.5	lite snow	5	81	69	1043	1017
31	-1.9	-13.2	-10.3	-21.7	-6.1	-17.5	0.0	24.1	0.0	0.0		6	85	64	1018	1009
Total							0.0	822.1	0.0	2.2			Extreme / Date	Extreme / Date	Extreme / Date	Extreme / Date
Avg	-5.1	-8.3	-11.9	-17.4	-8.5	-12.9	1981-2010 Normal			12.7	Normal					
Extreme Date	8.3		-30.3				0.1	957.5	0.0	452.7	Cumulative		99	61	1043	994
Date	11		28							355.3	Cumulative No		13	11	29	21

Note: Red numbers indicate manual calculation; Red cell indicate data not available

SRC proudly recognizes the following CRS supporters:

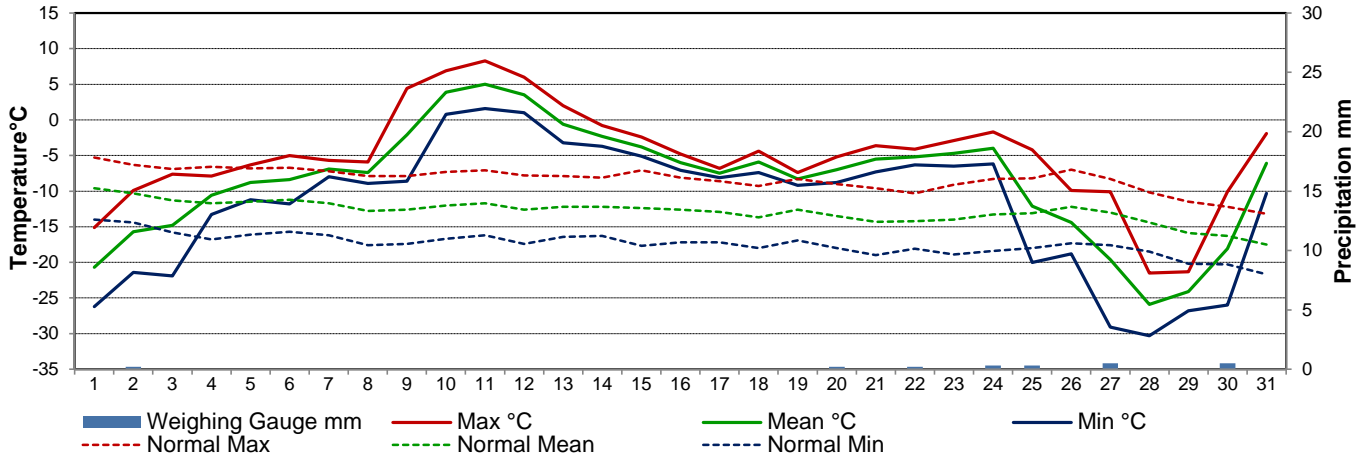


Agriculture and Agri-Food Canada

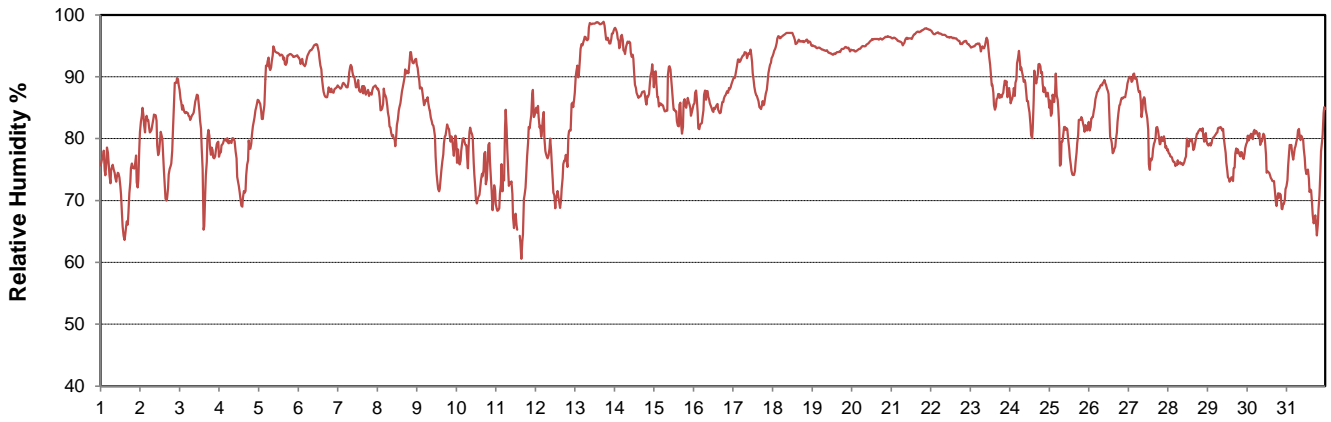
Agriculture et Agroalimentaire Canada



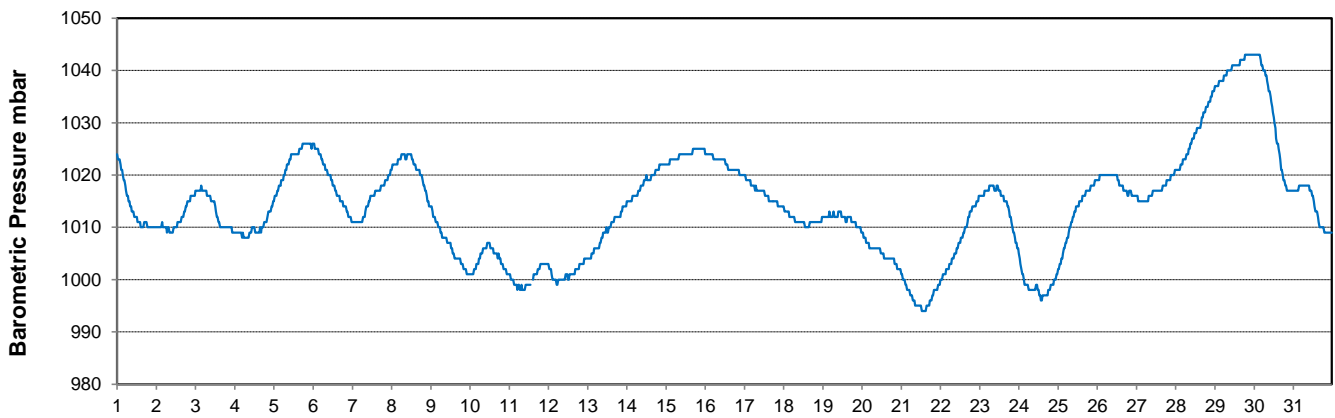
Temperature and Precipitation for December 2014



Relative Humidity for December 2014



Barometric Pressure Corrected to Sea Level for December 2014





SRC CLIMATE REFERENCE STATION DAILY DATA REPORT

SASKATOON STATION 4057180

52°09' N 106°36' W 497 m asl Estab. 1963

Preliminary **DECEMBER 2014**

Day	Wind Gust			Soil Temperatures at 0900hrs								Soil Moisture 30 cm	Radiation				
	Max	Direction	Time	Surface	5 cm	10 cm	20 cm	50 cm	100 cm	150 cm	300 cm		0900hrs	Bright Sunshine	Possible	% Possible	Global
	km/h			°C	°C	°C	°C	°C	°C	°C	°C	%	hours	hours		MJ/m ²	MJ/m ²
1	29.3	SSE	6:18	-20.0	-2.0	-1.5	-1.0	1.5	4.5	6.0	8.5	10.5	1.7	8.1	21.0	2.8	2.3
2	40.9	W	13:14	-16.5	-2.0	-2.0	-1.0	1.5	4.5	6.0	8.5	10.6	5.7	8.0	70.9	3.5	1.9
3	32.0	SSW	15:14	-19.5	-2.0	-1.5	-1.0	1.5	4.5	6.0	8.0	10.6	0.8	8.0	10.0	2.1	1.9
4	21.0	SW	1:46	-13.0	-2.0	-1.5	-1.0	1.5	4.5	6.0	8.0	10.6	5.9	8.0	73.9	2.8	1.4
5	25.8	WSW	18:27	-10.5	-2.0	-1.5	-1.0	1.5	4.0	5.5	8.0	10.7	2.1	8.0	26.4	2.6	1.8
6	34.6	SE	11:53	-8.0	-1.5	-1.5	-1.0	1.5	4.0	5.5	8.0	10.8	0.3	7.9	3.8	1.9	1.7
7	36.5	WNW	14:37	-7.5	-1.5	-1.0	-1.0	1.5	4.0	5.5	8.0	10.9	0.0	7.9	0.0	1.9	1.7
8	34.1	SSE	19:16	-8.5	-1.5	-1.0	-0.5	1.5	4.0	5.5	8.0	11	0.0	7.9	0.0	1.8	1.6
9	33.5	SSW	22:42	-4.0	-1.0	-1.0	-0.5	1.5	4.0	5.5	7.5	11.1	4.9	7.9	62.4	3.0	1.5
10	39.7	SSW	21:54	0.0	-1.0	-0.5	-0.5	1.5	4.0	5.5	7.5	12.1	6.4	7.8	81.7	3.4	0.7
11	41.2	WSW	15:08	4.0	-0.5	-0.5	0.0	1.5	4.0	5.5	7.5	13.2	1.2	7.8	15.4	1.8	1.0
12	27.8	SE	18:47	1.0	-0.5	0.0	0.0	1.5	4.0	5.5	7.5	14.4	2.8	7.8	35.9	2.4	1.3
13	39.5	NE	4:10	-3.0	0.0	0.0	0.0	1.5	4.0	5.0	7.5	14.4	0.0	7.8	0.0	0.9	0.7
14	39.9	N	12:29	-3.0	0.0	0.0	0.0	1.5	4.0	5.0	7.5	14.1	0.0	7.8	0.0	1.7	1.4
15	24.1	N	4:27	-3.5	0.0	0.0	0.5	2.0	4.0	5.0	7.5	13.6	0.0	7.8	0.0	0.7	0.5
16	28.4	S	22:28	-6.0	0.0	0.0	0.5	2.0	4.0	5.0	7.5	13.1	0.0	7.7	0.0	1.7	1.4
17	32.5	SSE	10:58	-7.0	0.0	0.0	0.5	2.0	4.0	5.0	7.5	12.4	0.0	7.7	0.0	1.4	1.2
18	24.9	S	3:15	-5.0	0.0	0.0	0.5	2.0	4.0	5.0	7.5	11.9	0.0	7.7	0.0	1.0	0.8
19	23.0	SE	23:23	-8.5	0.0	0.0	0.5	2.0	4.0	5.0	7.5	11.7	0.0	7.7	0.0	1.5	1.2
20	21.7	SE	3:17	-7.5	0.0	0.0	0.5	2.0	4.0	5.0	7.0	11.4	0.0	7.7	0.0	1.3	1.0
21	25.8	ENE	18:37	-6.5	0.0	0.0	0.5	2.0	4.0	5.0	7.0	11.4	0.0	7.7	0.0	1.6	1.3
22	18.6	NNE	0:41	-5.0	0.0	0.0	0.5	2.0	4.0	5.0	7.0	11.5	0.0	7.7	0.0	1.1	0.9
23	25.2	SE	22:12	-4.5	0.0	0.0	0.5	2.0	4.0	5.0	7.0	11.5	5.1	7.7	66.0	3.3	1.1
24	33.4	NW	17:38	-5.5	0.0	0.0	0.5	2.0	4.0	5.0	7.0	11.5	2.3	7.7	29.8	2.5	1.4
25	40.8	NW	1:43	-14.5	-0.5	0.0	0.5	2.0	4.0	5.0	7.0	11.3	6.6	7.7	85.3	3.9	0.9
26	24.6	SW	14:20	-16.0	-0.5	0.0	0.5	2.0	4.0	5.0	7.0	10.5	3.3	7.8	42.6	3.6	1.5
27	24.1	NE	10:50	-14.0	-1.0	0.0	0.5	2.0	4.0	5.0	7.0	10.3	0.0	7.8	0.0	2.2	1.8
28	14.7	NNE	14:34	-29.5	-1.5	-0.5	0.0	2.0	4.0	5.0	7.0	9.6	7.3	7.8	94.0	5.0	1.1
29	30.7	NW	16:45	-21.5	-2.0	-1.5	-0.5	1.5	4.0	5.0	7.0	9.2	6.3	7.8	81.0	5.5	1.5
30	51.5	SW	18:11	-26.0	-3.0	-2.0	-1.0	1.5	3.5	5.0	7.0	8.7	2.3	7.8	29.5	3.2	2.0
31	38.7	NW	4:02	-7.0	-3.0	-2.5	-1.5	1.0	3.5	5.0	7.0	9.1	1.9	7.8	24.3	2.4	1.5
Total													66.9	242.30	27.6	74.5	42.0
Mean				-9.5	-0.9	-0.6	-0.2	1.7	4.0	5.3	7.5	11.4	1981-2010 Normal for Radiation				
Extreme	51.5	SW	18:11	1971- 2000 Normal for Soil Temperatures									85.7	242.3	35.4	100.0	50.0
Date	30			-7.1	-6.6	-5.6	-1.7	2.0	3.8	6.4		No. of Bright Sunshine days = 18					

Note: Red numbers indicate manual calculation

SRC proudly recognizes the following CRS supporters:

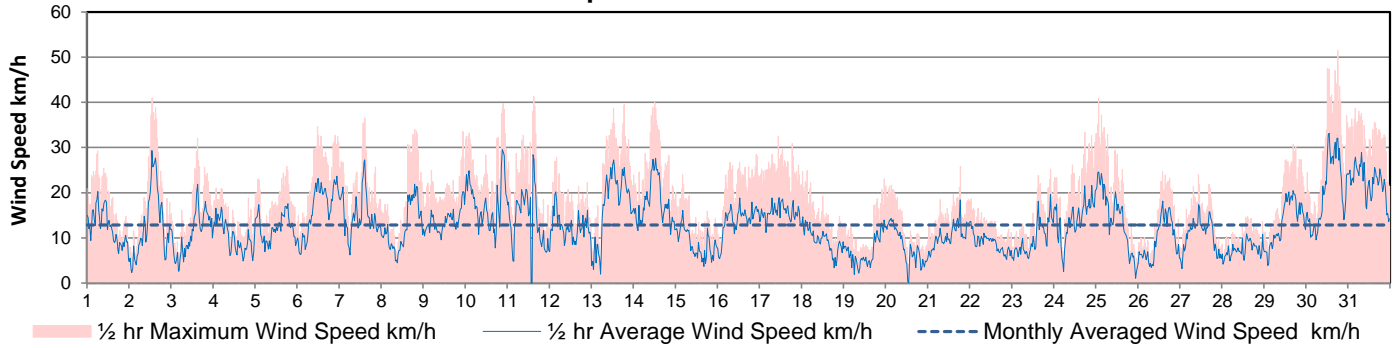


Agriculture and Agri-Food Canada

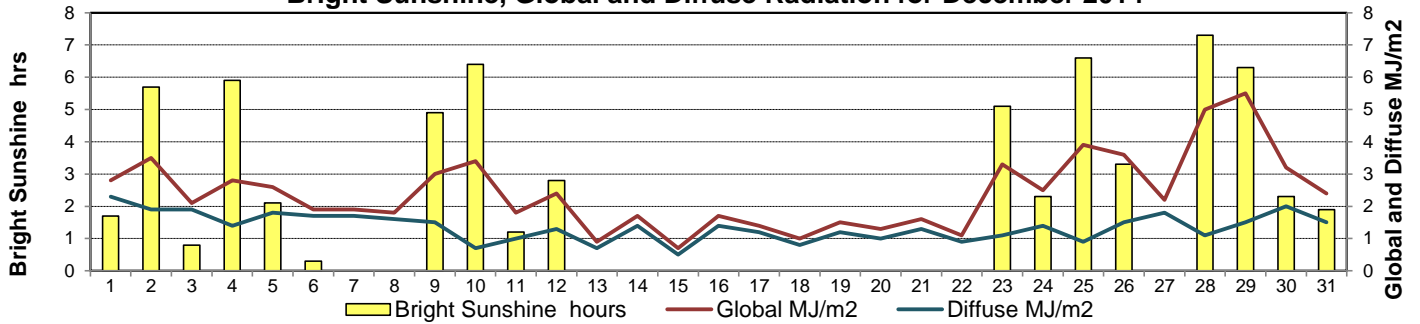
Agriculture et Agroalimentaire Canada



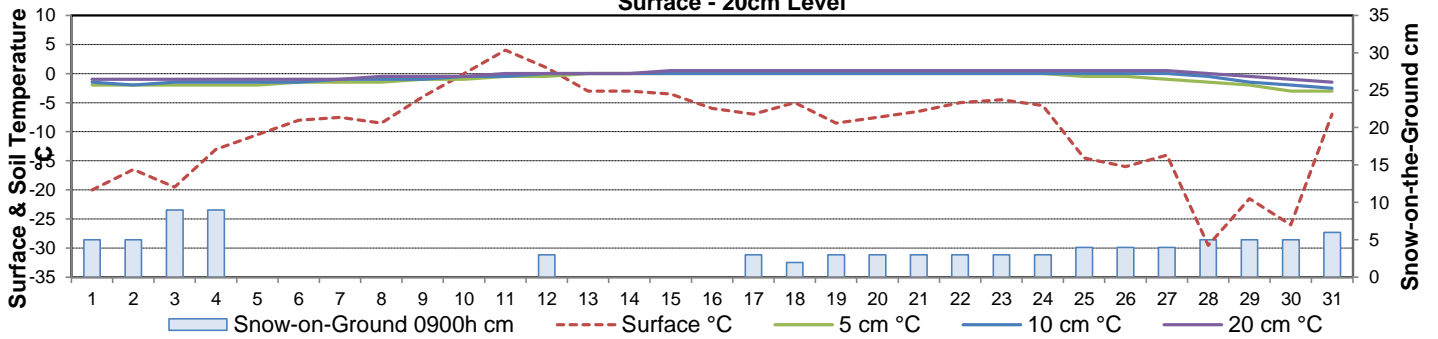
Wind Speed for December 2014



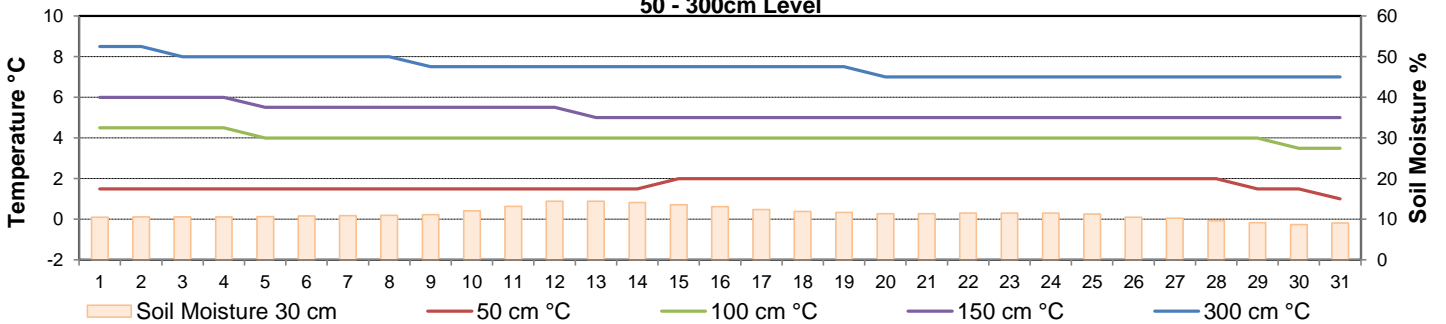
Bright Sunshine, Global and Diffuse Radiation for December 2014



Soil Temperatures for December 2014 Surface - 20cm Level



Soil Temperatures for December 2014 50 - 300cm Level





SRC CLIMATE REFERENCE STATION DAILY DATA REPORT

SASKATOON STATION 4057180

52°09' N 106°36' W 497 m asl Estab. 1963

Preliminary **DECEMBER 2014**

Extreme Records for December

Max/Min Temperature °C			Precipitation - Monthly mm			Wind Monthly km/h			CRS Bright Sunshine - Monthly								
S'toon Area	Date	Site	S'toon CRS	Date	S'toon Area	Date	Site	S'toon CRS	Date	S'toon Airport	Date	S'toon CRS**	Date	Hours	Year	No. of Days	Year
14.4	05/1939	SE	11.2	14/1997	59.2	1956	SA	48.2	1973	121 ^w	12/1955	89.4	1992	123.3	2006	27	1994*
-43.9	22/1892	SM	-42.2	31/1973	0.0	1906,'30	SE	0.4	2009					49.1	1973	17	1966*

**1975 forward * more than one year

Notable Events for CRS Saskatoon - December						Saskatoon Area Stations			Glossary		
Element	Type	Day	New Record	Old Record	Year	Station	Location	Period	Term	Definition	
Temperature	Highest Maximum Daily	10	6.9	6.5	1981	SM	NWMP	c. 1892-1901	T	Trace of precipitation	
		11	8.3	6.4	2005	SE	Eby	1901-1941	Normal	30 year average beginning with the decade	
		12	6.0	5.0	1980	US	Univ. of Sask.	1915-1964	SOG	Depth of snow-on-the-ground in cm	
	Highest Minimum Daily	10	0.8	-0.5	2005	S	Saskatoon	1941-1942	na	not available	
		11	1.6	-1.6	2005	SA	Saskatoon A	1942 -	Degree-days		
		12	1	-4	1988	NRC	Nat. Res. Council	1952-1966	Tm	Mean Temperature	
		13	-3.2	-3.5	2005	SRC	Sask. Res. Council	1963-	Growing	(Tm-5°C); if Tm ≤ 5°C then GDD = 0	
	Highest Mean Daily	10	3.9	2	2005	SWT	S'toon Water Treatment Plant	1974 -	Heating	(18°C-Tm); if Tm ≤ 18°C then HDD = 0	
		11	5	2.4	2005	SC	S'toon Central Ave	1974-1989	Cooling	(Tm-18°C); if Tm ≥ 18°C then CDD = 0	
		12	3.5	0	1988	S1	Saskatoon 1	1976-1978	Extreme Cooling	(Tm-24°C); if Tm ≥ 24°C then CDD = 0	
	Highest number of frost free days			3	2	1987	S2	Saskatoon 2	1977-1990	Maintenance on Belfort, Diffuse, Global and snow depth (Dec 2&3/14). Automated Snow Depth sensor is malfunctioning and was removed from site for assessment (Dec 3, 2014). New Global Radiation sensor installed (Dec 11, 2014). New automated snowdepth sensor installed (Dec 16, 2014). Ice fog/hoar frost buildup on radiation instruments removed (23 Dec 2014).	
							K	S'toon Kernen Farm	1993-2004		
						KCS	S'toon Kernen Farm CS	1996-			
						RCS	Environment Canada	2008-			
						SF	Sutherland Forestry	1943-1970			

SRC proudly recognizes the following CRS supporters:

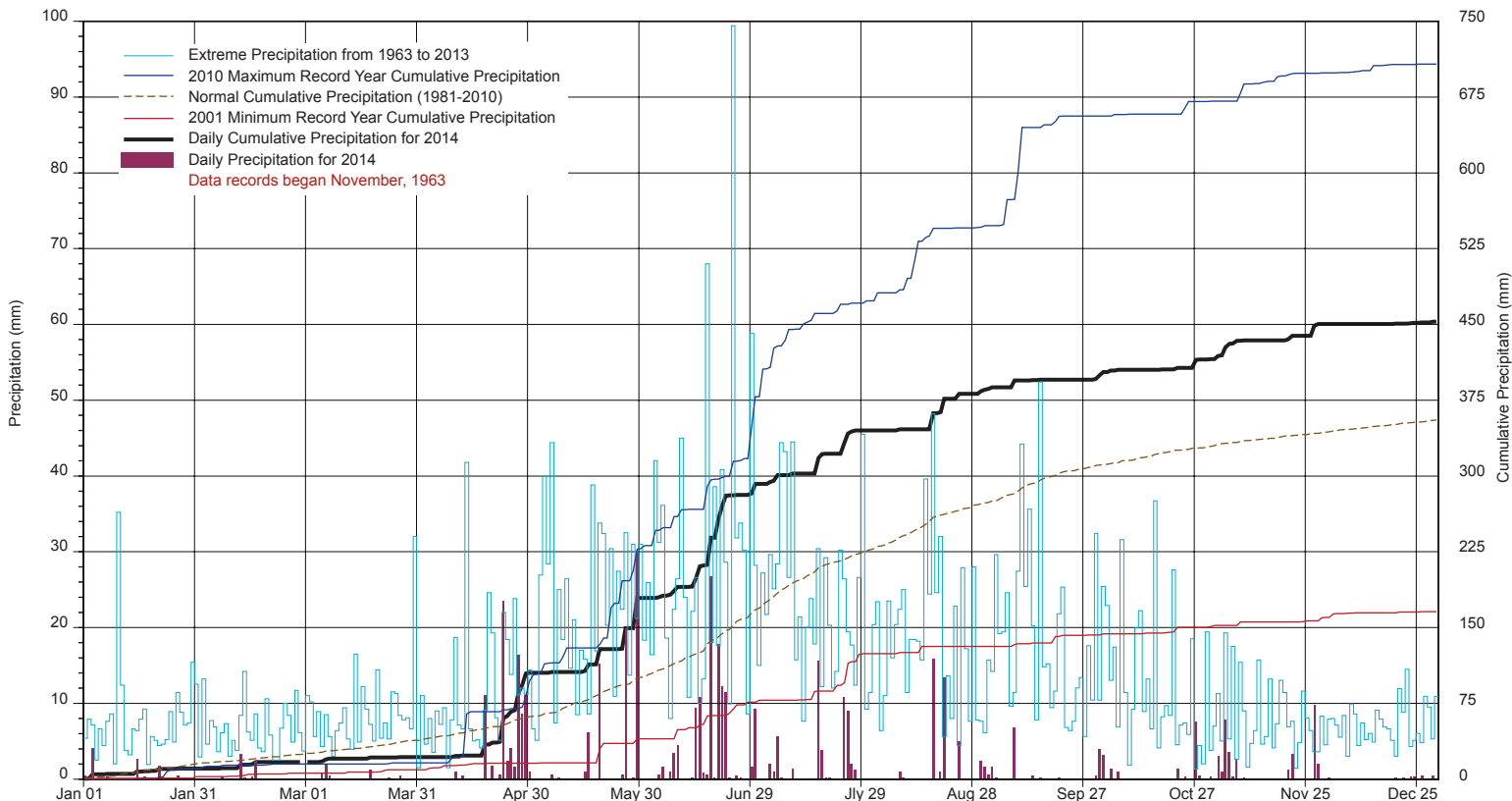


Agriculture and Agri-Food Canada

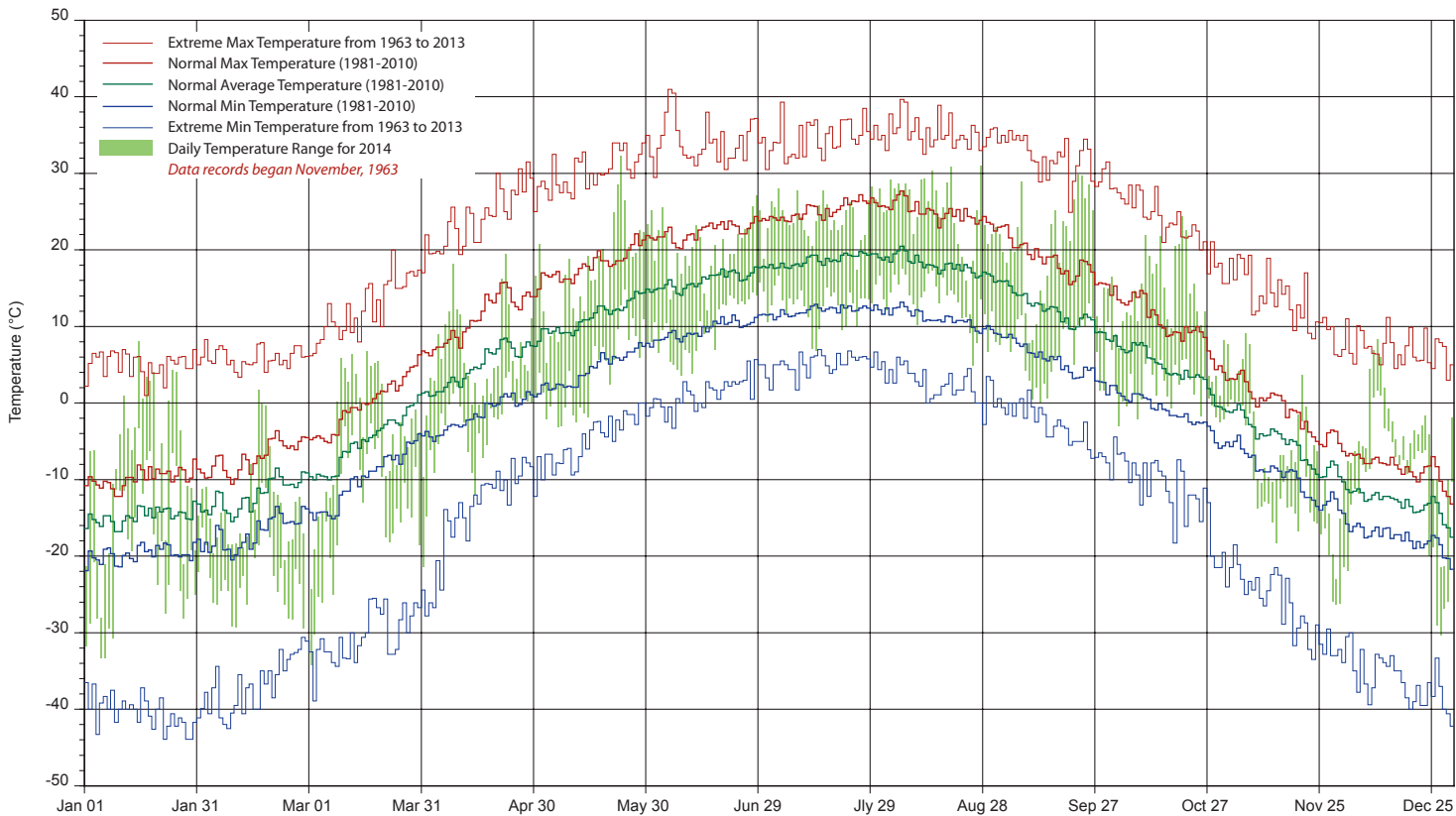
Agriculture et Agroalimentaire Canada



SASKATCHEWAN RESEARCH COUNCIL SASKATOON CLIMATE REFERENCE STATION 2014 PRECIPITATION AND NORMALS



2014 TEMPERATURES AND NORMALS



SRC proudly recognizes the following CRS supporters:



Agriculture and
Agri-Food Canada

Agriculture et
Agroalimentaire Canada

