



SRC CLIMATE REFERENCE STATION DAILY DATA REPORT

SASKATOON STATION 4057180

52°09' N 106°36' W 497 m asl Estab. 1963

Preliminary **DECEMBER 2015**

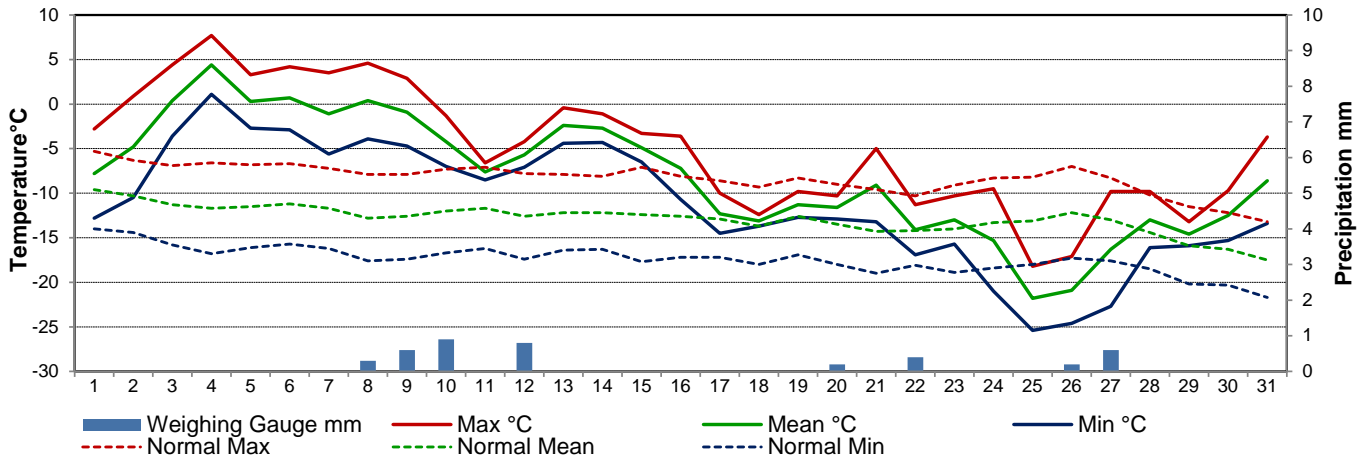
Day	Temperature						Degree-days			Precipitation			Relative Humidity		Station Pressure (sea level)	
	Max	Normal Max	Min	Normal Min	Mean	Normal Mean	Growing	Heating	Cooling	Weighing Gauge	Comments	Snow-on-Ground 0900h	Max ½ hr Avg	Min ½ hr Avg	Max ½ hr Avg	Min ½ hr Avg
	°C	1981-2010	°C	1981-2010	°C	1981-2010	5°C base	18°C base	18°C base	mm		cm	%	%	mbar	mbar
1	-2.8	-5.3	-12.8	-14.0	-7.8	-9.6	0.0	25.8	0.0	0.0		9	93	53	1012	1011
2	0.9	-6.3	-10.5	-14.4	-4.8	-10.3	0.0	22.8	0.0	0.0	Manual SOG 10 cm	9	90	70	1011	1005
3	4.4	-6.9	-3.6	-15.8	0.4	-11.3	0.0	17.6	0.0	0.0		9	81	56	1012	999
4	7.7	-6.6	1.1	-16.8	4.4	-11.7	0.0	13.6	0.0	0.0		9	82	63	1007	997
5	3.3	-6.8	-2.7	-16.1	0.3	-11.5	0.0	17.7	0.0	0.0		3	86	63	1016	1007
6	4.2	-6.7	-2.9	-15.7	0.7	-11.2	0.0	17.3	0.0	0.0		4	87	61	1014	1002
7	3.5	-7.2	-5.6	-16.2	-1.1	-11.7	0.0	19.1	0.0	0.0		4	94	75	1004	996
8	4.6	-7.9	-3.9	-17.6	0.4	-12.8	0.0	17.6	0.0	0.3	discontinuous snow pack	4	93	61	1003	993
9	2.9	-7.9	-4.7	-17.4	-0.9	-12.6	0.0	18.9	0.0	0.6		4	98	80	994	992
10	-1.3	-7.3	-7.0	-16.7	-4.2	-12.0	0.0	22.2	0.0	0.9		6	97	89	1004	995
11	-6.6	-7.1	-8.5	-16.2	-7.6	-11.7	0.0	25.6	0.0	0.0		6	95	84	1011	1004
12	-4.2	-7.8	-7.1	-17.4	-5.7	-12.6	0.0	23.7	0.0	0.8		7	97	87	1013	1007
13	-0.4	-7.9	-4.4	-16.4	-2.4	-12.2	0.0	20.4	0.0	0.0		7	97	88	1007	999
14	-1.1	-8.1	-4.3	-16.3	-2.7	-12.2	0.0	20.7	0.0	0.0		7	98	87	1015	1002
15	-3.3	-7.1	-6.5	-17.7	-4.9	-12.4	0.0	22.9	0.0	0.0		7	93	82	1015	1009
16	-3.6	-8.1	-10.7	-17.2	-7.2	-12.6	0.0	25.2	0.0	0.0		7	95	74	1012	1008
17	-10.0	-8.6	-14.5	-17.2	-12.3	-12.9	0.0	30.3	0.0	0.0	Manual SOG 5 cm	7	95	67	1014	1009
18	-12.4	-9.3	-13.7	-18.0	-13.1	-13.7	0.0	31.1	0.0	0.0		7	80	73	1017	1012
19	-9.8	-8.3	-12.7	-16.9	-11.3	-12.6	0.0	29.3	0.0	0.0		7	89	78	1012	1008
20	-10.3	-9.0	-12.9	-18.0	-11.6	-13.5	0.0	29.6	0.0	0.2		7	91	79	1010	1000
21	-5.0	-9.6	-13.2	-19.0	-9.1	-14.3	0.0	27.1	0.0	0.0		7	91	80	1000	995
22	-11.3	-10.3	-16.9	-18.1	-14.1	-14.2	0.0	32.1	0.0	0.4	light snow	6	92	86	998	995
23	-10.3	-9.1	-15.7	-18.9	-13.0	-14.0	0.0	31.0	0.0	0.0		6	92	83	1001	999
24	-9.5	-8.3	-21.0	-18.4	-15.3	-13.3	0.0	33.3	0.0	0.0		8	92	77	1015	1001
25	-18.2	-8.2	-25.4	-18.0	-21.8	-13.1	0.0	39.8	0.0	0.0		8	82	71	1030	1015
26	-17.1	-7.0	-24.6	-17.3	-20.9	-12.2	0.0	38.9	0.0	0.2		8	85	79	1030	1028
27	-9.8	-8.3	-22.7	-17.6	-16.3	-13.0	0.0	34.3	0.0	0.6	light snow	7	88	81	1029	1016
28	-9.8	-10.2	-16.1	-18.5	-13.0	-14.4	0.0	31.0	0.0	0.0		9	90	82	1020	1014
29	-13.2	-11.5	-15.9	-20.2	-14.6	-15.9	0.0	32.6	0.0	0.0		9	87	79	1022	1020
30	-9.7	-12.2	-15.3	-20.3	-12.5	-16.3	0.0	30.5	0.0	0.0		8	89	75	1021	1017
31	-3.7	-13.2	-13.4	-21.7	-8.6	-17.5	0.0	26.6	0.0	0.0		8	87	66	1022	1014
Total							0.0	808.6	0.0	4.0			Extreme / Date	Extreme / Date	Extreme / Date	Extreme / Date
Avg	-4.9	-8.3	-11.2	-17.4	-8.1	-12.9	1981-2010 Normal			12.7	Normal					
Extreme	7.7		-25.4				0.1	957.5	0.0	340.7	Cumulative		98	53	1030	992
Date	4		25							355.3	Cumulative No		9	1	25	9

Note: Red numbers indicate manual calculation; Red cell indicate data not available

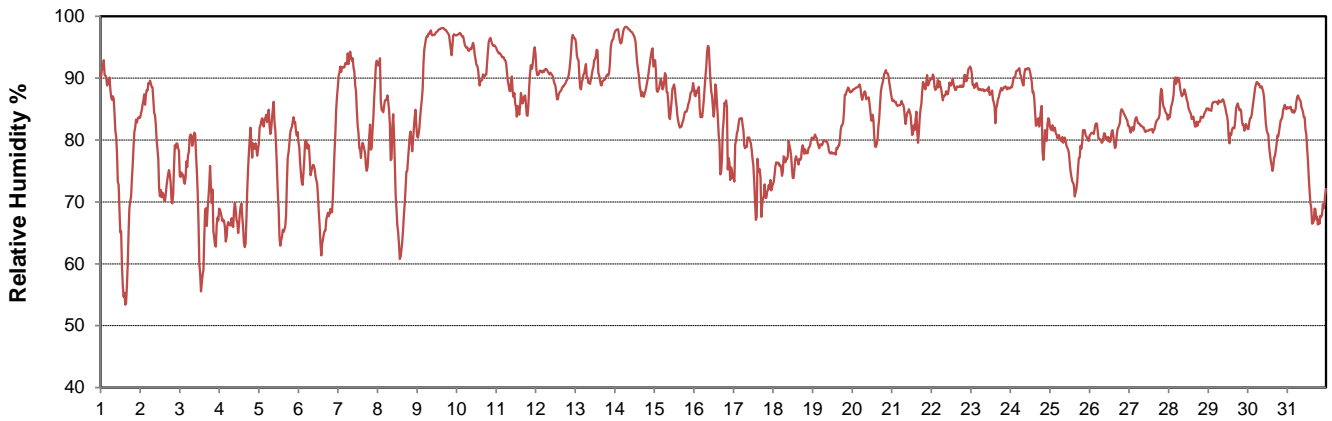
SRC proudly recognizes the following CRS supporters:



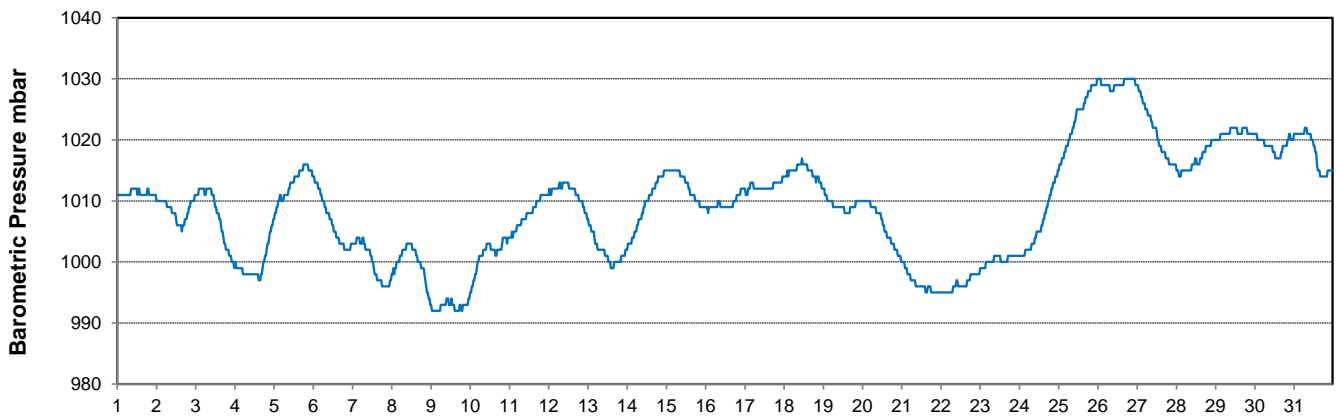
Temperature and Precipitation for December 2015



Relative Humidity for December 2015



Barometric Pressure Corrected to Sea Level for December 2015





SRC CLIMATE REFERENCE STATION DAILY DATA REPORT

SASKATOON STATION 4057180

52°09' N 106°36' W 497 m asl Estab. 1963

Preliminary **DECEMBER 2015**

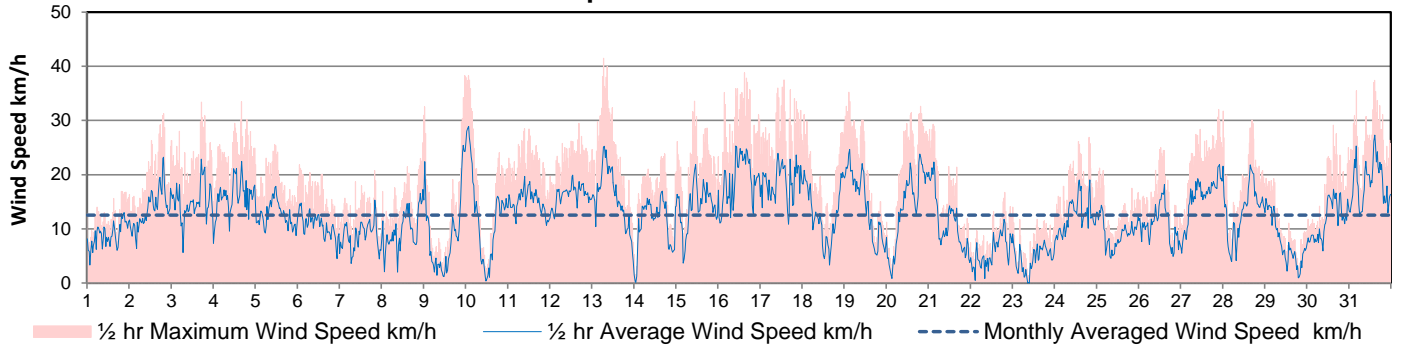
Day	Wind Gust			Soil Temperatures at 0900hrs								Soil Moisture 30 cm	Radiation				
	Max	Direction	Time	Surface	5 cm	10 cm	20 cm	50 cm	100 cm	150 cm	300 cm		0900hrs	Bright Sunshine	Possible	% Possible	Global
	km/h			°C	°C	°C	°C	°C	°C	°C	°C	%	hours	hours		MJ/m ²	MJ/m ²
1	16.9	SSW	19:52	-15.0	0.0	0.5	1.0	3.0	5.5	7.0	8.5	18.7	7.7	8.1	95.2	5.8	0.9
2	31.2	WNW	19:38	-11.0	0.0	0.5	1.0	3.0	5.5	6.5	8.5	17.9	3.6	8.1	44.7	3.5	2.4
3	33.4	SE	17:10	-4.0	0.0	0.5	1.0	3.0	5.5	6.5	8.5	17.5	6.2	8.0	77.2	3.5	0.9
4	33.4	SW	16:18	3.5	0.0	0.5	1.0	2.5	5.0	6.5	8.5	17.6	2.7	8.0	33.8	2.4	1.5
5	25.5	SW	11:14	-2.0	0.0	0.5	1.0	2.5	5.0	6.5	8.5	18.3	7.3	8.0	91.6	3.7	0.6
6	21.8	S	1:24	-2.5	0.0	0.5	1.0	2.5	5.0	6.5	8.5	18.5	1.4	7.9	17.6	2.3	1.8
7	20.7	SW	20:11	-6.0	0.0	0.5	1.0	2.5	5.0	6.5	8.5	18.6	2.3	7.9	29.1	2.7	1.4
8	26.0	ESE	23:58	-1.5	0.0	0.5	1.0	2.5	5.0	6.5	8.5	18.5	5.2	7.9	65.9	3.1	0.8
9	38.2	NNE	23:43	-4.5	0.0	0.5	1.0	2.5	5.0	6.0	8.0	18.6	0.0	7.9	0.0	1.0	0.8
10	38.2	NNE	1:30	-3.0	0.0	0.5	1.0	2.5	5.0	6.0	8.0	18.6	0.0	7.8	0.0	1.8	1.5
11	28.5	ESE	9:30	-8.0	0.0	0.5	1.0	2.5	5.0	6.0	8.0	18.3	0.0	7.8	0.0	1.6	1.4
12	29.5	SE	6:47	-6.5	0.0	0.5	1.0	2.5	5.0	6.0	8.0	17.6	0.4	7.8	5.1	2.1	1.6
13	41.5	SE	16:47	-3.5	0.0	0.5	0.5	2.5	4.5	6.0	8.0	17.1	0.1	7.8	1.3	1.7	1.5
14	23.9	NNE	17:56	-3.0	0.0	0.5	0.5	2.5	4.5	6.0	8.0	17.1	0.0	7.8	0.0	1.0	0.8
15	33.6	W	10:59	-5.5	0.0	0.5	0.5	2.5	4.5	6.0	8.0	16.8	0.0	7.8	0.0	1.5	1.3
16	38.7	NW	15:15	-7.0	0.0	0.5	0.5	2.5	4.5	6.0	8.0	16.2	0.0	7.8	0.0	1.3	1.1
17	37.5	NNW	13:31	-13.0	-0.5	0.0	0.5	2.5	4.5	6.0	8.0	14.7	0.0	7.7	0.0	1.9	1.7
18	31.1	NW	1:14	-13.0	-1.0	0.0	0.5	2.5	4.5	5.5	7.5	12.8	0.2	7.7	2.6	1.8	1.5
19	35.2	ESE	2:57	-11.5	-1.0	-0.5	0.5	2.0	4.5	5.5	7.5	11.9	0.0	7.7	0.0	2.0	1.8
20	32.6	SE	19:30	-11.5	-1.0	-0.5	0.5	2.0	4.5	5.5	7.5	11.8	3.2	7.7	41.5	3.1	1.8
21	29.3	SE	2:35	-7.0	-1.5	-0.5	0.0	2.0	4.5	5.5	7.5	11.5	3.8	7.7	49.2	2.5	1.2
22	16.7	E	19:37	-17.5	-2.0	-1.0	0.0	2.0	4.0	5.5	7.5	11.2	0.2	7.7	2.6	2.2	1.6
23	14.0	NE	0:06	-15.0	-2.0	-1.5	0.0	2.0	4.0	5.5	7.5	11	4.5	7.7	58.3	4.1	1.2
24	26.9	NNE	19:53	-11.5	-2.0	-1.5	-0.5	2.0	4.0	5.5	7.5	10.8	1.0	7.7	12.9	1.5	0.9
25	21.2	NW	1:31	-26.0	-2.5	-1.5	-0.5	1.5	4.0	5.5	7.5	10.2	7.1	7.7	91.8	5.9	0.8
26	25.0	WNW	12:48	-24.0	-3.0	-2.5	-1.0	1.5	4.0	5.5	7.5	9.7	6.9	7.7	89.1	5.3	1.1
27	32.0	SE	21:37	-19.0	-3.5	-3.0	-1.5	1.5	4.0	5.0	7.5	9.6	0.0	7.8	0.0	1.3	1.0
28	31.8	SE	0:22	-16.0	-3.0	-2.5	-1.5	1.5	4.0	5.0	7.5	9.8	0.0	7.8	0.0	2.3	1.9
29	19.3	NNE	0:31	-15.5	-3.0	-2.5	-1.5	1.0	3.5	5.0	7.0	9.8	0.0	7.8	0.0	2.1	1.8
30	29.1	WNW	15:16	-17.0	-3.0	-2.5	-1.5	1.0	3.5	5.0	7.0	9.8	5.1	7.8	65.5	4.4	1.3
31	37.4	SW	14:56	-13.0	-3.5	-2.5	-2.0	1.0	3.5	5.0	7.0	9.7	5.8	7.8	74.3	3.6	1.2
Total													74.7	242.43	30.8	83.0	41.1
Mean				-10.0	-1.0	-0.5	0.2	2.2	4.5	5.8	7.9	14.5	1981-2010 Normal for Radiation				
Extreme	41.5	SE	16:47	1971- 2000 Normal for Soil Temperatures									85.7	242.3	35.4	100.0	50.0
Date	13			-7.1	-6.6	-5.6	-1.7	2.0	3.8	6.4		No. of Bright Sunshine days = 20					

Note: Red numbers indicate manual calculation

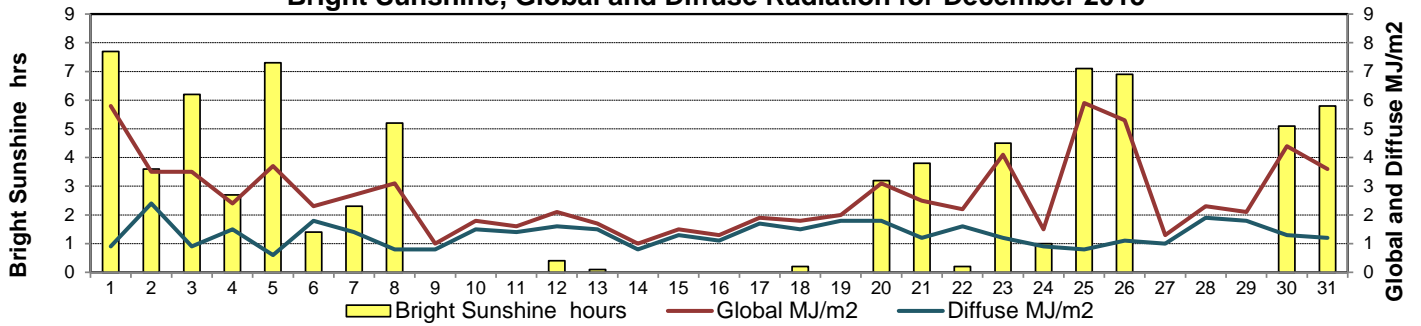
SRC proudly recognizes the following CRS supporters:



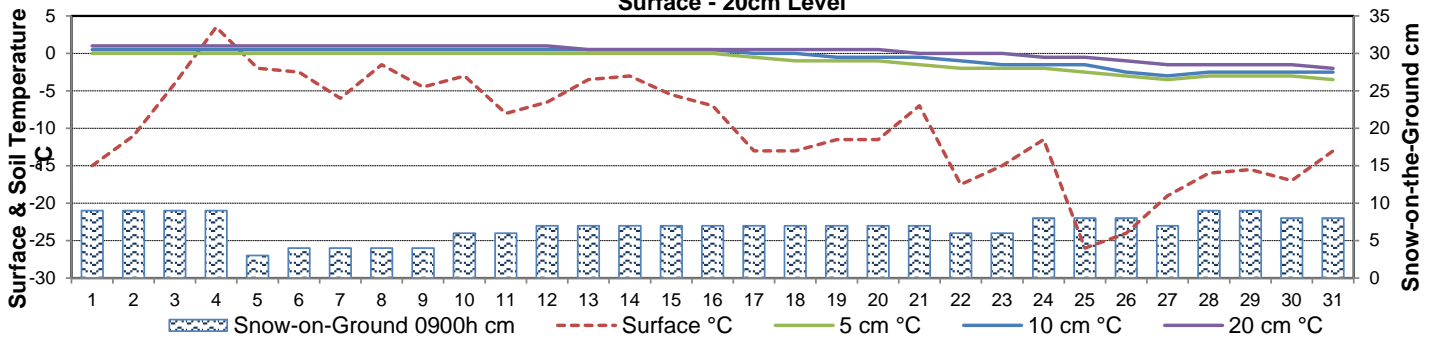
Wind Speed for December 2015



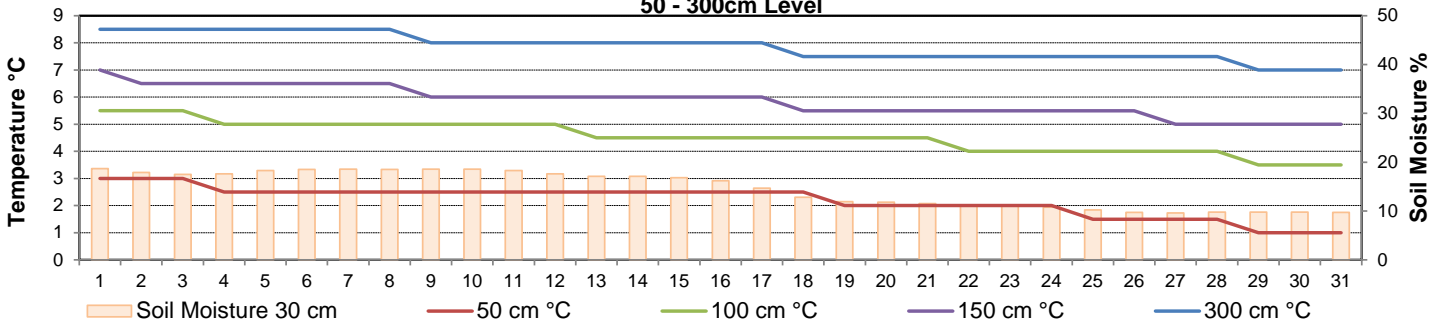
Bright Sunshine, Global and Diffuse Radiation for December 2015



**Soil Temperatures for December 2015
Surface - 20cm Level**



**Soil Temperatures for December 2015
50 - 300cm Level**





SRC CLIMATE REFERENCE STATION DAILY DATA REPORT

SASKATOON STATION 4057180

52°09' N 106°36' W 497 m asl Estab. 1963

Preliminary **DECEMBER 2015**

Extreme Records for December

Max/Min Temperature °C			Precipitation - Monthly mm			Wind Monthly km/h			CRS Bright Sunshine - Monthly								
S'toon Area	Date	Site	S'toon CRS	Date	S'toon Area	Date	Site	S'toon CRS	Date	S'toon Airport	Date	S'toon CRS**	Date	Hours	Year	No. of Days	Year
14.4	05/1939	SE	11.2	14/1997	59.2	1956	SA	48.2	1973	121 ^w	12/1955	89.4	1992	123.3	2006	27	1994*
-43.9	22/1892	SM	-42.2	31/1973	0.0	1906, '30	SE	0.4	2009					49.1	1973	17	1966*

**1975 forward * more than one year

Notable Events for CRS Saskatoon - December						Saskatoon Area Stations			Glossary	
Element	Type	Day	New Record	Old Record	Year	SM	NWMP	c. 1892-1901	T	Trace of precipitation
Temperature	Daily Maximum	4	7.7	6.5	1990	SE	Eby	1901-1941	Normal	30 year average beginning with the decade
	Daily Minimum	4	1.1	-2.8	1965	US	Univ. of Sask.	1915-1964	SOG	Depth of snow-on-the-ground in cm
	Daily Average	4	4.4	1.1	1965	S	Saskatoon	1941-1942	na	not available
						SA	Saskatoon A	1942 -	Degree-days	
						NRC	Nat. Res. Council	1952-1966	Tm	Mean Temperature
						SRC	Sask. Res. Council	1963-	Growing	(Tm-5°C); if Tm ≤ 5°C then GDD = 0
						SWT	S'toon Water Treatment Plant	1974 -	Heating	(18°C-Tm); if Tm ≤ 18°C then HDD = 0
						SC	S'toon Central Ave	1974-1989	Cooling	(Tm-18°C); if Tm ≥ 18°C then CDD = 0
						S1	Saskatoon 1	1976-1978	Extreme Cooling	(Tm-24°C); if Tm ≥ 24°C then CDD = 0
						S2	Saskatoon 2	1977-1990		
						K	S'toon Kernen Farm	1993-2004		
						KCS	S'toon Kernen Farm CS	1996-		
						RCS	Environment Canada	2008-		
						SF	Sutherland Forestry	1943-1970		

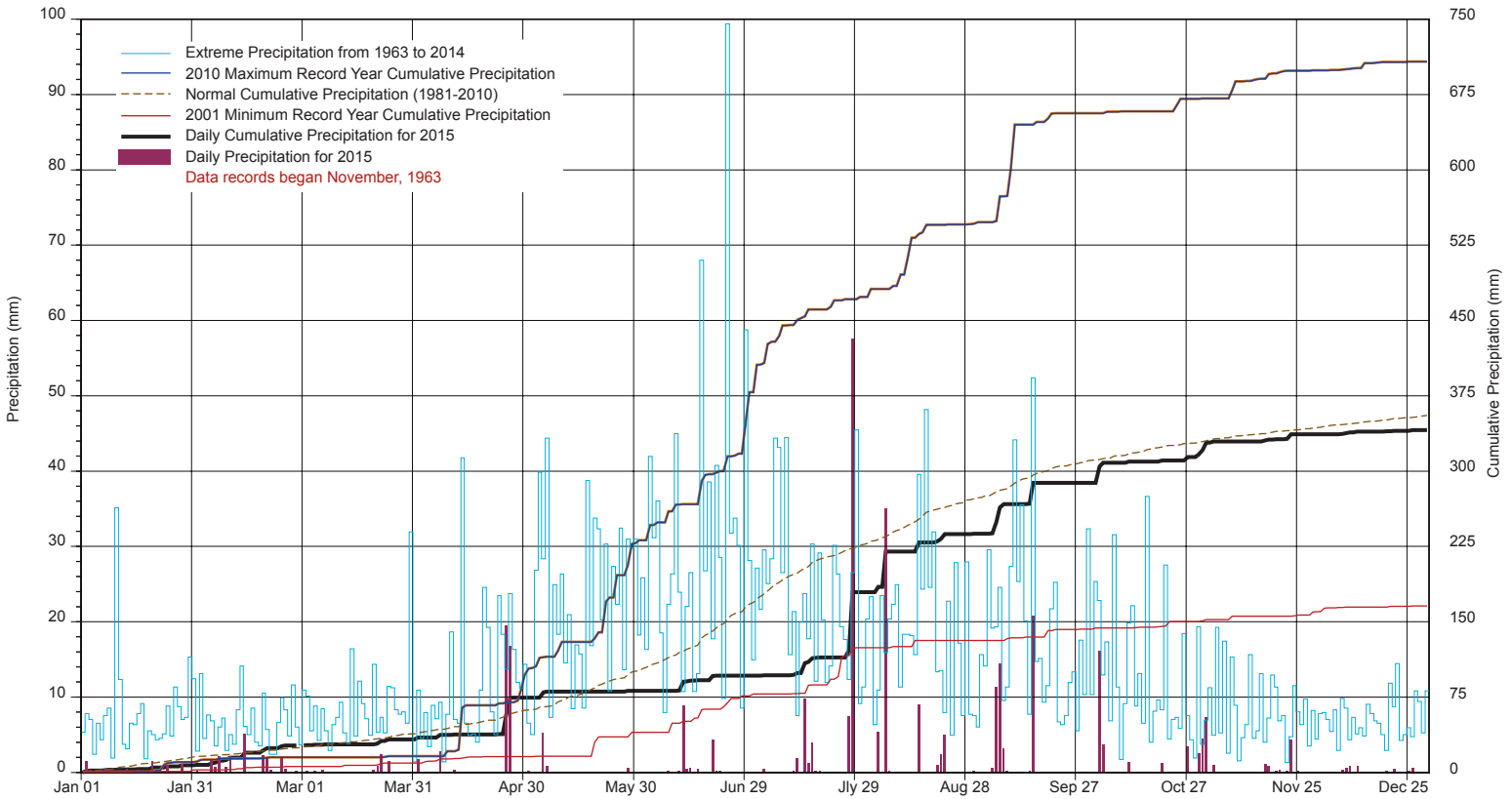
Summary

light freezing rain Dec 8

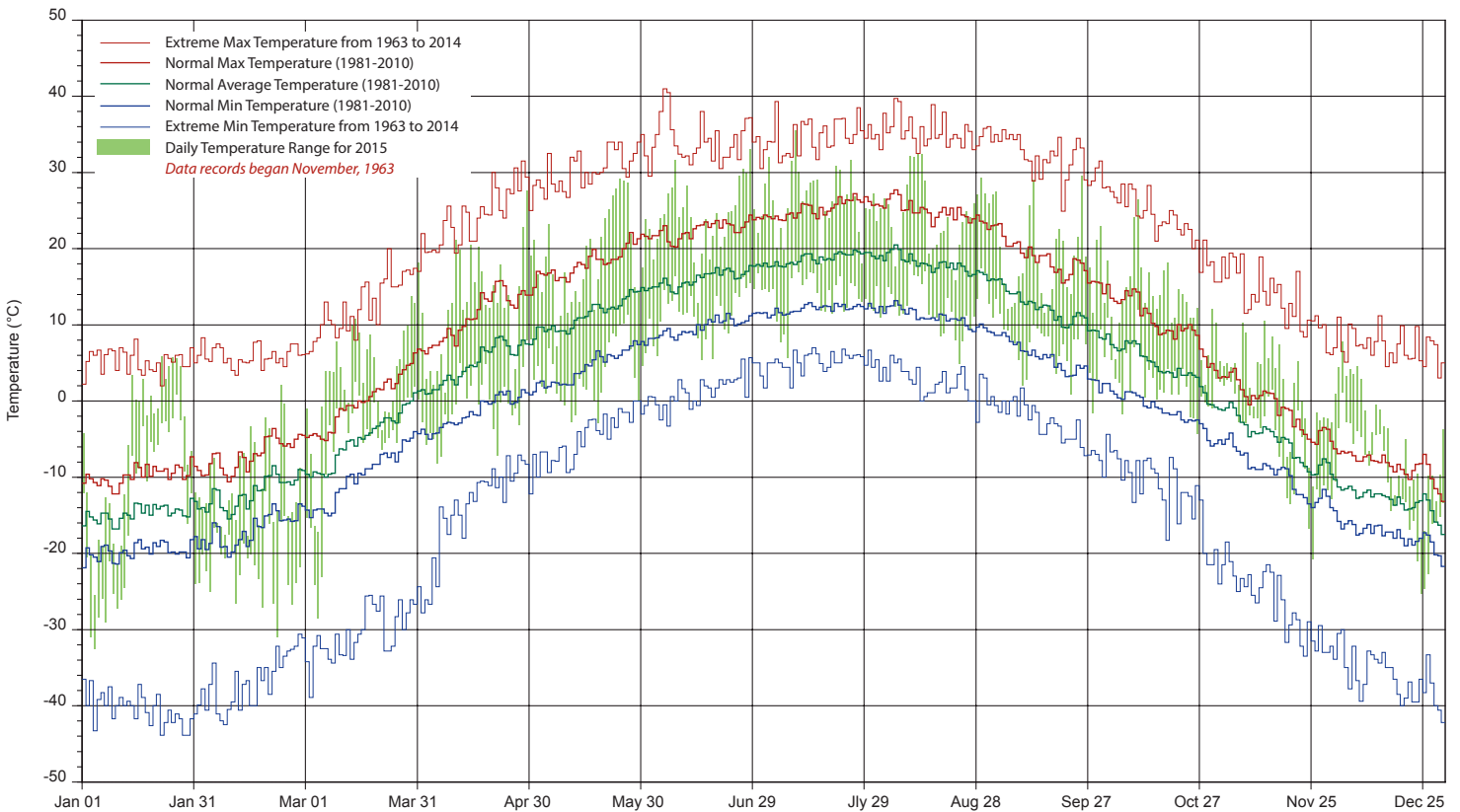
SRC proudly recognizes the following CRS supporters:



SASKATCHEWAN RESEARCH COUNCIL SASKATOON CLIMATE REFERENCE STATION 2015 PRECIPITATION AND NORMALS



2015 TEMPERATURES AND NORMALS



SRC proudly recongnizes the following CRS supporters:

