



SRC CLIMATE REFERENCE STATION DAILY DATA REPORT

SASKATOON STATION 4057180

52°09' N 106°36' W 497 m asl Estab. 1963



Preliminary **JULY 2014**

Day	Temperature						Degree-days			Precipitation			Relative Humidity		Station Pressure (sea level)	
	Max	Normal Max	Min	Normal Min	Mean	Normal Mean	Growing	Heating	Cooling	Weighing Gauge	Tipping Bucket	Notes	Max ½ hr Avg	Min ½ hr Avg	Max ½ hr Avg	Min ½ hr Avg
	°C	1981-2010	°C	1981-2010	°C	1981-2010	5°C base	18°C base	18°C base	mm	mm		%	%	mbar	mbar
1	22.9	23.9	10.6	11.5	16.8	17.7	11.8	1.2	0.0	0.0	0.0		95	47	1017	1012
2	26.3	24.4	12.7	11.6	19.5	18.1	14.5	0.0	1.5	0.0	0.0		89	42	1017	1016
3	25.6	24.2	15.4	10.9	20.5	17.6	15.5	0.0	2.5	0.0	0.0		80	40	1017	1010
4	28.0	23.9	16.7	11.3	22.4	17.7	17.4	0.0	4.4	1.8	2.0		91	60	1010	1004
5	25.2	24.3	13.5	12.2	19.4	18.3	14.4	0.0	1.4	0.9	1.0		94	51	1012	1006
6	23.8	23.8	11.7	11.6	17.8	17.7	12.8	0.2	0.0	6.1	5.6		94	52	1013	1009
7	23.3	23.7	13.7	11.3	18.5	17.6	13.5	0.0	0.5	0.3	0.2		91	50	1014	1009
8	23.5	24.5	13.0	11.4	18.3	18.0	13.3	0.0	0.3	0.0	0.0		92	48	1017	1014
9	27.8	24.7	13.6	11.7	20.7	18.2	15.7	0.0	2.7	0.0	0.0	smoke in air from NWT	85	36	1015	1003
10	24.3	24.0	14.8	11.8	19.6	17.9	14.6	0.0	1.6	1.4	1.4		91	34	1011	1001
11	22.5	24.7	12.6	11.8	17.6	18.3	12.6	0.4	0.0	0.0	0.0		87	44	1017	1011
12	21.8	25.9	11.3	12.2	16.6	19.1	11.6	1.4	0.0	0.0	0.0		80	33	1020	1015
13	20.5	25.8	7.1	12.7	13.8	19.3	8.8	4.2	0.0	0.0	0.0		88	44	1024	1020
14	23.7	25.7	6.8	12.9	15.3	19.3	10.3	2.7	0.0	0.0	0.0		97	40	1027	1022
15	25.8	24.6	9.7	12.4	17.8	18.5	12.8	0.2	0.0	0.0	0.0		90	37	1022	1015
16	27.7	23.9	12.6	12.0	20.2	18.0	15.2	0.0	2.2	0.0	0.0	smoke in air from BC/Alta	82	38	1015	1007
17	25.9	25.4	15.1	12.3	20.5	18.9	15.5	0.0	2.5	11.3	15.6		93	38	1012	999
18	22.5	24.4	13.9	12.5	18.2	18.5	13.2	0.0	0.2	5.8	3.8		94	54	1007	999
19	23.8	24.9	14.4	12.4	19.1	18.7	14.1	0.0	1.1	0.0	0.2		90	59	1006	997
20	22.5	25.3	12.7	11.8	17.6	18.5	12.6	0.4	0.0	0.0	0.2		88	56	1007	1000
21	23.2	25.8	9.5	12.8	16.4	19.3	11.4	1.6	0.0	0.0	0.0		96	49	1016	1008
22	25.2	26.8	10.1	12.4	17.7	19.6	12.7	0.3	0.0	0.0	0.0		96	47	1022	1016
23	26.2	25.9	14.5	12.7	20.4	19.3	15.4	0.0	2.4	0.0	0.0		86	54	1023	1013
24	25.6	26.4	13.1	12.0	19.4	19.2	14.4	0.0	1.4	11.6	10.8		94	71	1012	1002
25	17.4	26.3	10.1	12.1	13.8	19.2	8.8	4.2	0.0	10.0	9.0		95	64	1001	995
26	21.3	27.2	13.7	12.4	17.5	19.8	12.5	0.5	0.0	3.2	2.0		93	69	1016	999
27	21.9	26.4	13.6	12.7	17.8	19.6	12.8	0.2	0.0	1.2	1.2		93	62	1019	1016
28	26.4	26.1	13.5	12.4	20.0	19.3	15.0	0.0	2.0	0.0	0.0		90	48	1020	1018
29	28.2	26.8	13.0	12.1	20.6	19.5	15.6	0.0	2.6	0.0	0.0		96	44	1021	1019
30	26.6	26.2	15.5	12.8	21.1	19.5	16.1	0.0	3.1	0.0	0.0		90	53	1019	1016
31	28.0	25.7	16.6	12.2	22.3	19.0	17.3	0.0	4.3	0.0	0.0		91	48	1017	1014
Total							422.2	17.5	36.7	53.6	53.0		Extreme / Date	Extreme / Date	Extreme / Date	Extreme / Date
Avg	24.4	25.2	12.7	12.1	18.6	18.7	1981-2010 Normal			59.0	Normal					
Extreme Date	28.2		6.8				424.0	30.7	51.7	345.2	Cumulative		97	33	1027	995
	29		14							226.5	Cumulative Normal		14	12	14	25

Note: Red numbers indicate manual calculation; Red cell indicate data not available

SRC proudly recognizes the following CRS supporters:

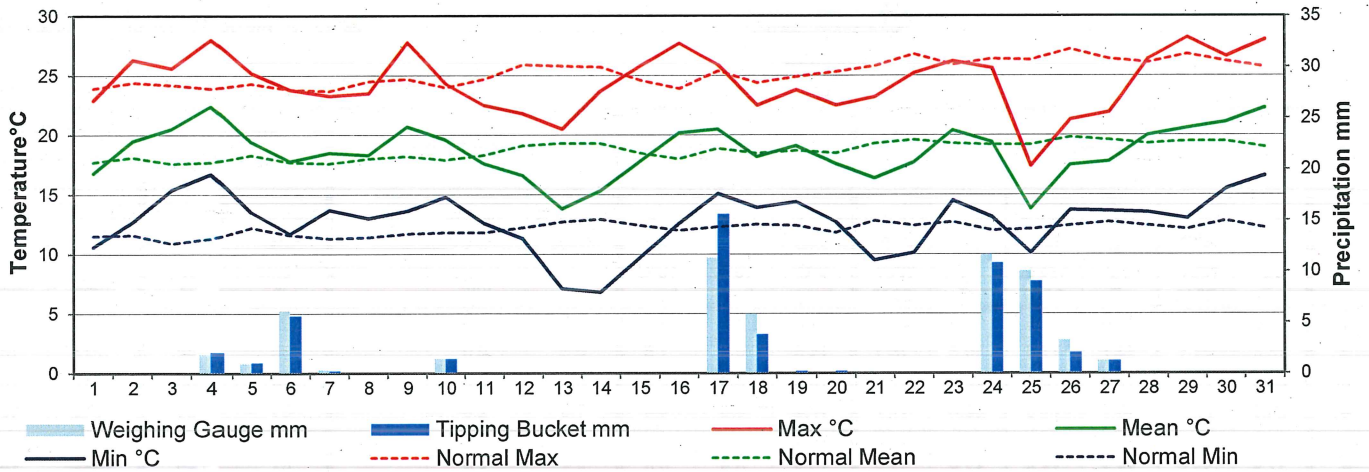


Agriculture and Agri-Food Canada

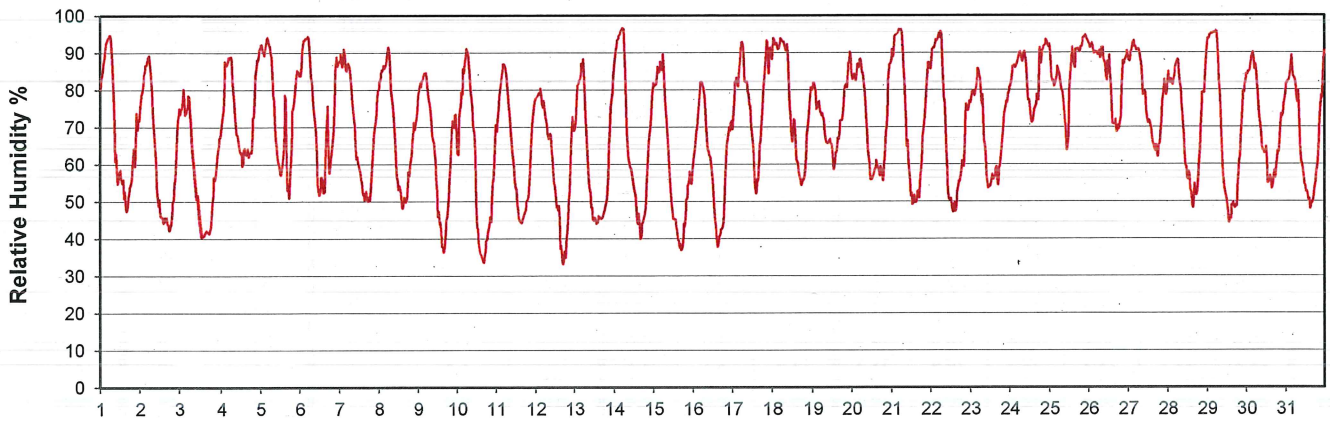
Agriculture et Agroalimentaire Canada



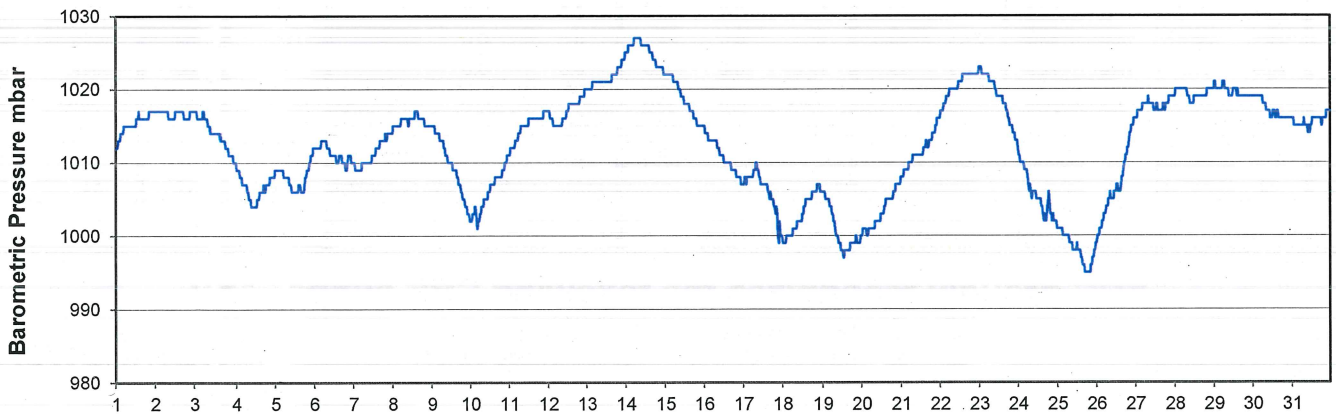
Temperature and Precipitation for July 2014



Relative Humidity for July 2014



Barometric Pressure Corrected to Sea Level for July 2014





SRC CLIMATE REFERENCE STATION DAILY DATA REPORT



SASKATOON STATION 4057180

52°09' N 106°36' W 497 m asl Estab. 1963

Preliminary **JULY 2014**

Day	Wind Gust			Soil Temperatures at 0900hrs								Soil Moisture 30 cm	Radiation					
	Max	Direction	Time	Surface	5 cm	10 cm	20 cm	50 cm	100 cm	150 cm	300 cm		0900hrs	Bright Sunshine	Possible	% Possible	Global	Diffuse
	km/h			°C	°C	°C	°C	°C	°C	°C	°C		%	hours	hours		MJ/m ²	MJ/m ²
1	27.9	WNW	0:24	12.5	16.5	18.0	16.5	16.5	12.5	10.5	7.5	30.5	13.5	16.7	81.0	24.1	5.9	
2	25.6	SSW	13:54	16.0	18.5	19.0	17.5	16.5	12.5	10.5	7.5	29.5	13.0	16.6	78.1	23.2	6.6	
3	49.9	SSE	15:15	16.5	19.0	20.0	18.5	17.0	13.0	11.0	7.5	28.5	13.4	16.6	80.6	24.7	6.5	
4	32.7	W	16:28	16.5	20.5	21.5	19.0	17.5	13.0	11.0	7.5	27.6	13.5	16.6	81.3	24.3	6.1	
5	35.6	NNE	20:10	17.0	20.5	21.5	19.5	18.0	13.0	11.0	7.5	26.8	10.7	16.6	64.5	15.8	7.1	
6	41.3	WSW	17:02	15.0	19.0	20.0	19.0	18.0	13.5	11.0	7.5	26.1	11.9	16.6	71.9	19.4	6.2	
7	47.6	NNW	11:46	14.0	18.5	19.5	18.0	18.0	13.5	11.5	7.5	26.9	12.5	16.5	75.7	23.3	5.8	
8	24.0	NNE	11:35	14.0	19.0	20.0	18.5	17.5	13.5	11.5	8.0	25.9	12.5	16.5	75.8	22.1	8.9	
9	33.2	SSE	17:44	16.5	19.5	20.5	19.0	18.0	13.5	11.5	8.0	25.1	14.2	16.5	86.2	25.0	6.7	
10	45.8	NNW	3:30	14.5	20.5	21.5	19.5	18.0	13.5	11.5	8.0	24.3	13.4	16.4	81.5	25.9	4.0	
11	42.7	WNW	11:37	13.0	18.5	20.0	19.0	18.5	14.0	11.5	8.0	23.1	15.1	16.4	92.1	25.4	5.9	
12	44.1	NW	11:42	15.0	19.0	20.0	19.0	18.5	14.0	11.5	8.0	22.4	14.3	16.4	87.4	24.6	6.6	
13	43.8	NW	16:46	14.0	17.0	18.0	18.5	18.0	14.0	12.0	8.0	21.5	15.9	16.3	97.3	27.7	2.2	
14	20.1	SSW	17:26	14.0	17.0	18.0	18.0	18.0	14.0	12.0	8.5	21	15.1	16.3	92.6	26.3	3.1	
15	34.6	SW	13:17	16.0	17.5	19.0	18.5	18.0	14.0	12.0	8.5	20.5	14.1	16.3	86.7	25.5	4.1	
16	27.5	SW	17:02	15.0	19.0	20.0	19.0	18.0	14.0	12.0	8.5	20.1	11.5	16.2	70.9	20.9	7.7	
17	72.2	WSW	22:31	15.0	20.0	21.0	19.5	18.5	14.5	12.0	8.5	19.8	5.4	16.2	33.4	15.9	6.6	
18	45.9	NW	11:30	11.0	19.0	20.5	19.5	18.5	14.0	12.0	8.5	26	9.2	16.1	57.0	19.5	7.8	
19	35.9	SSE	9:05	14.5	19.5	20.5	19.0	18.5	14.5	12.0	8.5	24.5	2.8	16.1	17.4	12.6	8.4	
20	32.7	NW	12:27	14.0	19.0	20.0	18.5	18.5	14.5	12.5	9.0	23.8	10.3	16.1	64.1	19.1	6.9	
21	16.3	N	17:17	13.0	18.0	19.0	18.5	18.0	14.5	12.5	9.0	23	9.6	16.0	60.0	18.0	8.3	
22	23.1	SE	13:03	15.0	17.5	18.5	18.0	18.0	14.5	12.5	9.0	22.5	10.3	16.0	64.5	18.7	6.3	
23	41.5	SSE	12:21	16.0	19.0	20.0	18.5	18.0	14.5	12.5	9.0	21.9	9.4	15.9	59.0	20.0	7.2	
24	50.9	W	18:13	14.5	20.0	21.0	19.0	18.5	14.5	12.5	9.0	21.6	2.3	15.9	14.5	10.4	6.7	
25	45.0	S	12:48	11.5	17.0	18.0	18.0	18.0	14.5	12.5	9.0	25.4	5.1	15.8	32.2	10.3	5.5	
26	38.0	NNW	12:31	9.0	17.0	18.5	17.0	17.5	14.5	12.5	9.0	26.5	7.3	15.8	46.3	15.5	6.3	
27	22.7	SE	1:00	11.5	18.0	19.5	17.5	17.5	14.5	12.5	9.5	26.3	8.1	15.7	51.5	16.8	9.0	
28	23.4	NW	15:18	14.5	18.5	19.5	18.0	18.0	14.5	12.5	9.5	25.4	13.1	15.7	83.5	22.1	4.7	
29	15.1	NE	15:57	17.0	18.5	20.0	18.5	18.0	14.5	12.5	9.5	24.7	14.8	15.6	94.8	23.9	2.9	
30	34.5	SSE	14:11	17.5	20.5	21.5	19.5	18.5	14.5	13.0	9.5	23.9	12.9	15.6	82.9	20.5	6.5	
31	28.4	ESE	11:50	18.5	20.0	21.0	19.5	19.0	14.5	13.0	9.5	23.2	14.5	15.5	93.4	23.7	3.2	
Total													349.7	501.45	69.7	645.2	189.7	
Mean				14.6	18.7	19.8	18.6	18.0	14.0	11.9	8.5	24.5	1981-2010 Normal for Radiation					
Extreme	72.2	WSW	22:31	1971- 2000 Normal for Soil Temperatures								298.8	501.80	59.5	650.6	213.5		
Date	17			17.5	18.0	18.9	16.7	13.1	10.9	7.5		No. of Bright Sunshine days = 31						

Note: Red numbers indicate manual calculation

SRC proudly recognizes the following CRS supporters:

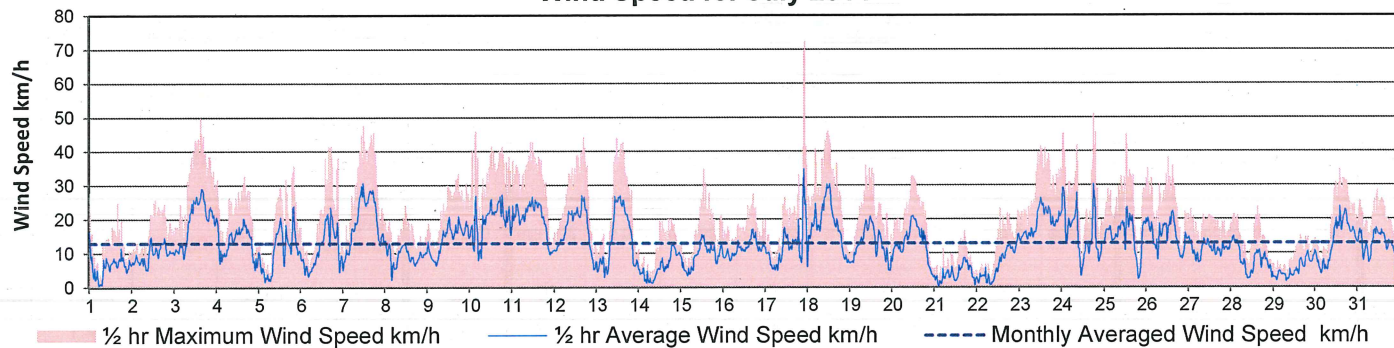


Agriculture and Agri-Food Canada

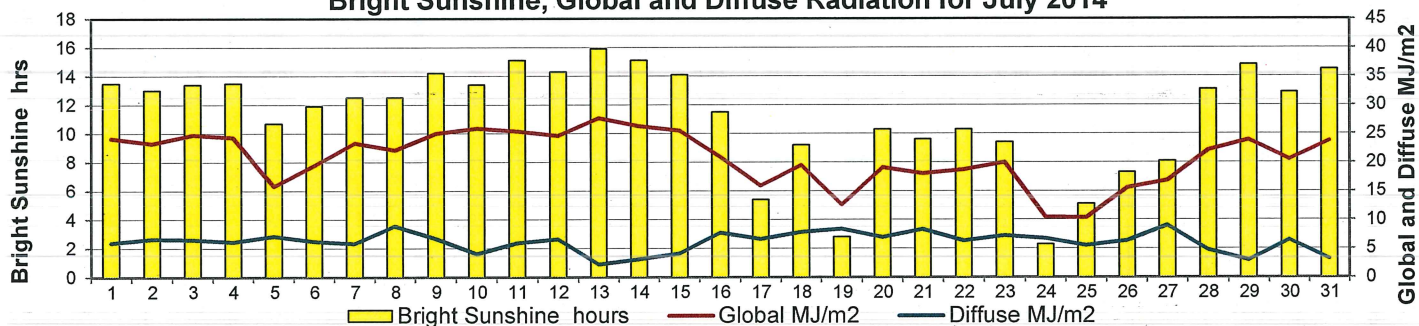
Agriculture et Agroalimentaire Canada



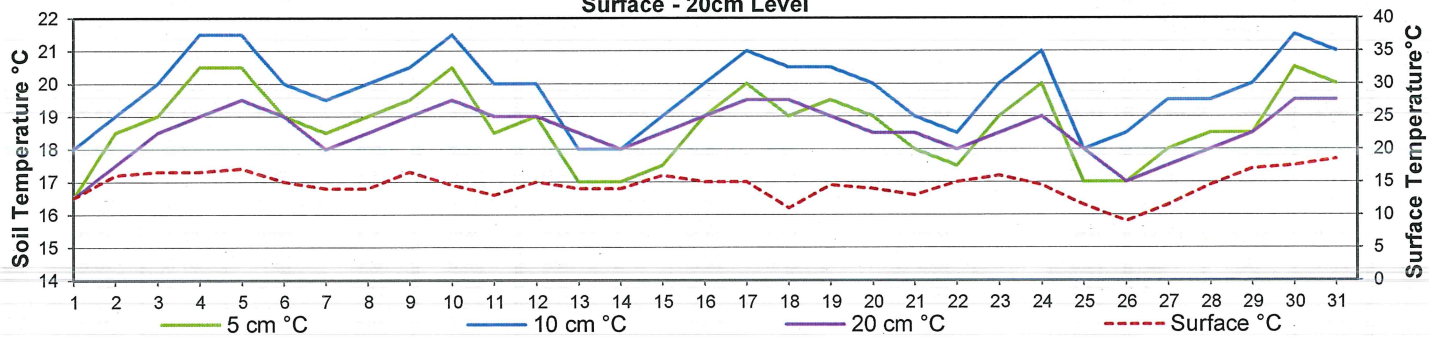
Wind Speed for July 2014



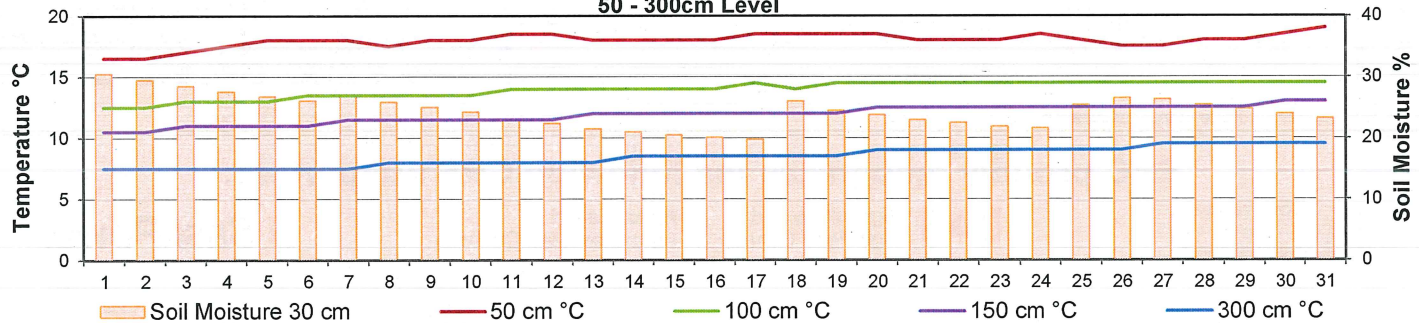
Bright Sunshine, Global and Diffuse Radiation for July 2014



Soil Temperatures for July 2014 Surface - 20cm Level



Soil Temperatures for July 2014 50 - 300cm Level





SRC CLIMATE REFERENCE STATION DAILY DATA REPORT



SASKATOON STATION 4057180

52°09' N 106°36' W 497 m asl Estab. 1963

Preliminary **JULY** 2014

Extreme Records for July

Max/Min Temperature °C					Precipitation - Monthly mm					Wind Monthly km/h				CRS Bright Sunshine - Monthly			
S'toon Area	Date	Site	S'toon CRS	Date	S'toon Area	Date	Site	S'toon CRS	Date	S'toon Airport	Date	S'toon CRS**	Date	Hours	Year	No. of Days	Year
40.0	(1919,41)1946	(SE SA) US	39.3	05/2001	162.9	1928	SE	125.9	1971	113 ^E	05/1955	160	1985	386.2	1974	31	1967*
-0.6	25/1918	SE	1.7	02,09/1967,78	0.0	1988	SC	13.0	1984					185.5	1998	27	2004

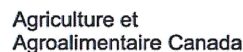
**1975 forward * more than one year

Notable Events for CRS Saskatoon - July						Saskatoon Area Stations			Glossary	
Element	Type	Day	New Record	Old Record	Year	SM	NWMP	c. 1892-1901	T	Trace of precipitation
No extremes measured						SE	Eby	1901-1941	Normal	30 year average beginning with the decade
						US	Univ. of Sask.	1915-1964	SOG	Depth of snow-on-the-ground in cm
						S	Saskatoon	1941-1942	na	not available
						SA	Saskatoon A	1942 -	Degree-days	
						NRC	Nat. Res. Council	1952-1966	Tm	Mean Temperature
						SRC	Sask. Res. Council	1963-	Growing	(Tm-5°C); if Tm ≤ 5°C then GDD = 0
						SWT	S'toon Water Treatment Plant	1974 -	Heating	(18°C-Tm); if Tm ≤ 18°C then HDD = 0
						SC	S'toon Central Ave	1974-1989	Cooling	(Tm-18°C); if Tm ≥ 18°C then CDD = 0
						S1	Saskatoon 1	1976-1978	Extreme Cooling	(Tm-24°C); if Tm ≥ 24°C then CDD = 0
						S2	Saskatoon 2	1977-1990		
						K	S'toon Kernen Farm	1993-2004		
						KCS	S'toon Kernen Farm CS	1996-		
						RCS	Environment Canada	2008-		
					SF	Sutherland Forestry	1943-1970			

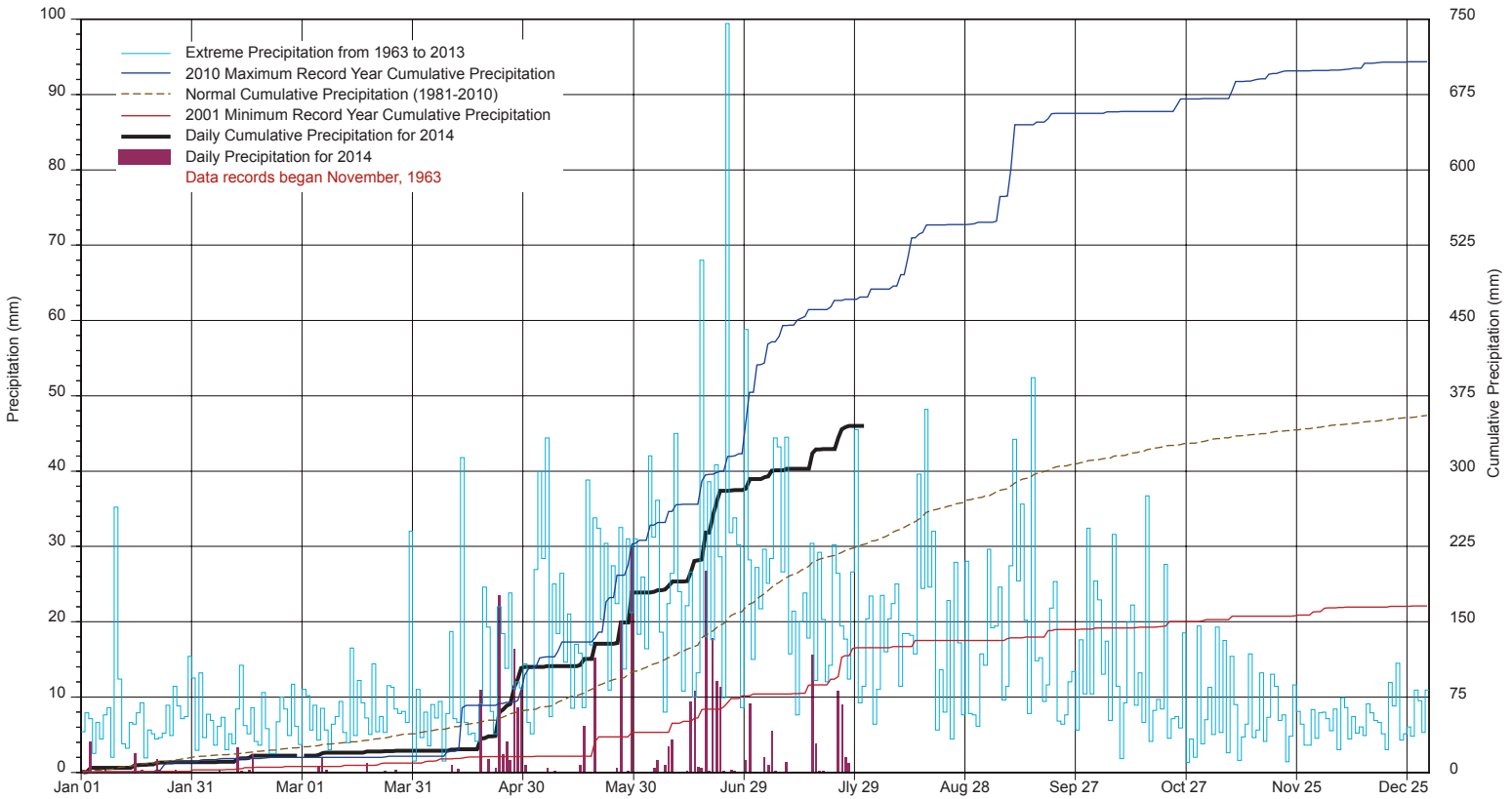
Summary

WELCOME TO SUMMER 2014

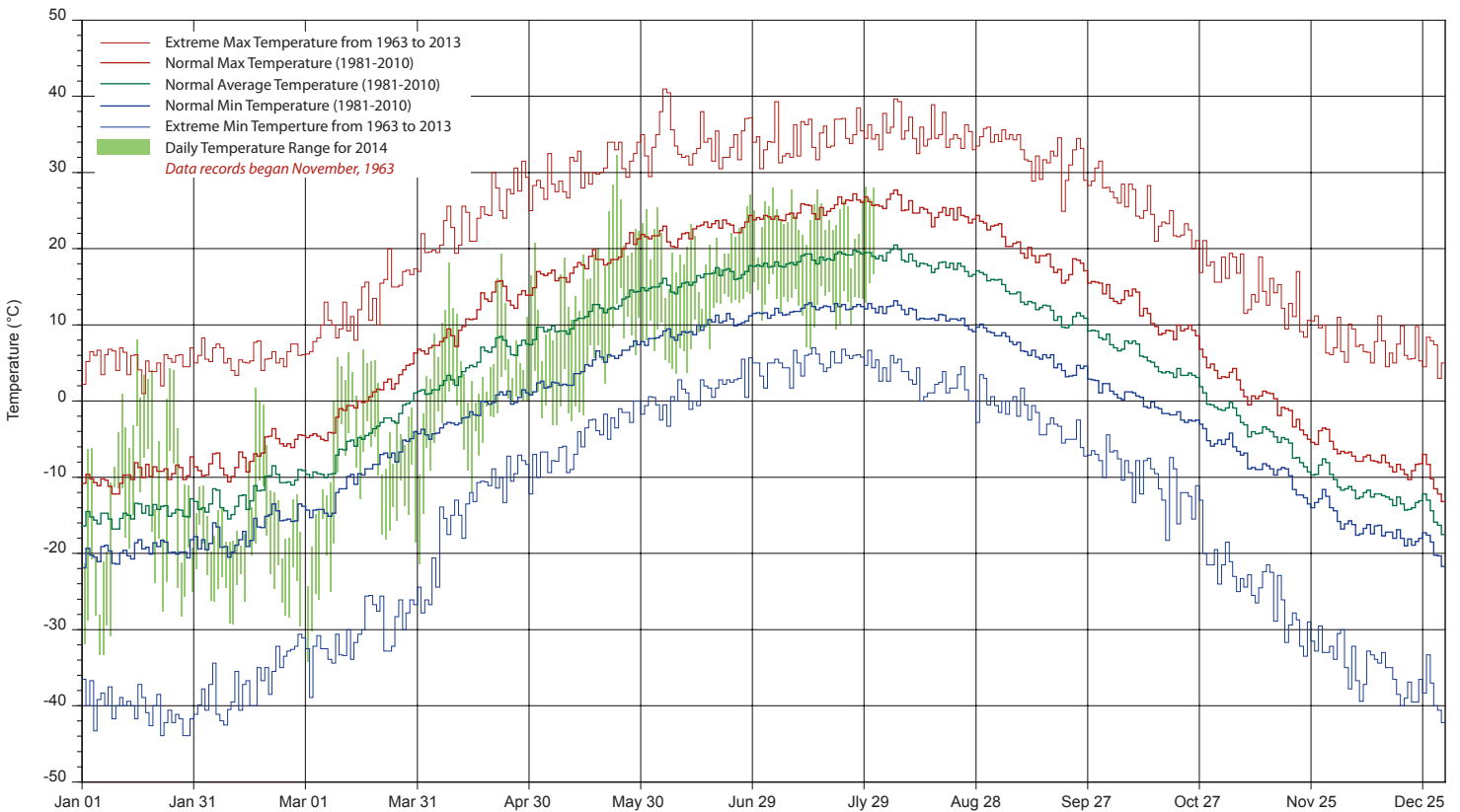
SRC proudly recognizes the following CRS supporters:



SASKATCHEWAN RESEARCH COUNCIL SASKATOON CLIMATE REFERENCE STATION 2014 PRECIPITATION AND NORMALS



2014 TEMPERATURES AND NORMALS



SRC proudly recognizes the following CRS supporters:



Agriculture and
Agri-Food Canada

Agriculture et
Agroalimentaire Canada

