



SRC CLIMATE REFERENCE STATION DAILY DATA REPORT

SASKATOON STATION 4057180

Saskatchewan 52°09' N 106°36' W 497 m asl Estab. 1963

Preliminary **JULY 2015**

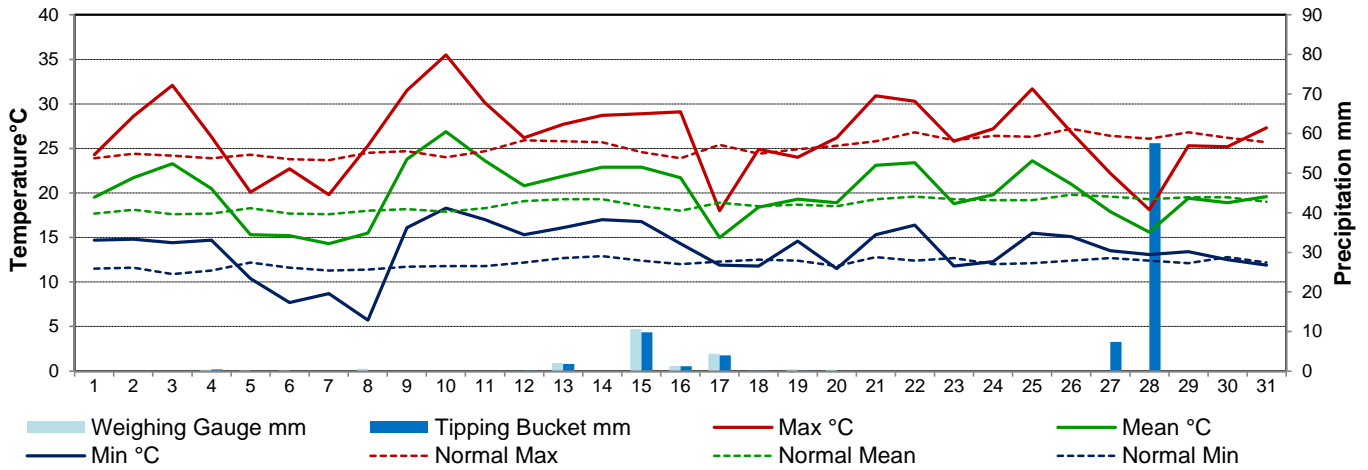
Day	Temperature						Degree-days			Precipitation			Relative Humidity		Station Pressure (sea level)	
	Max	Normal Max	Min	Normal Min	Mean	Normal Mean	Growing	Heating	Cooling	Weighing Gauge	Tipping Bucket	Notes	Max ½ hr Avg	Min ½ hr Avg	Max ½ hr Avg	Min ½ hr Avg
	°C	1981-2010	°C	1981-2010	°C	1981-2010	5°C base	18°C base	18°C base	mm	mm		%	%	mbar	mbar
1	24.3	23.9	14.7	11.5	19.5	17.7	14.5	0.0	1.5	0.0	0.0		94	58	1015	1013
2	28.6	24.4	14.8	11.6	21.7	18.1	16.7	0.0	3.7	0.0	0.0		95	37	1016	1014
3	32.1	24.2	14.4	10.9	23.3	17.6	18.3	0.0	5.3	0.0	0.0		89	29	1014	1006
4	26.3	23.9	14.7	11.3	20.5	17.7	15.5	0.0	2.5	0.3	0.4		86	36	1011	1006
5	20.1	24.3	10.4	12.2	15.3	18.3	10.3	2.7	0.0	0.2	0.0		85	51	1020	1011
6	22.7	23.8	7.7	11.6	15.2	17.7	10.2	2.8	0.0	0.2	0.0		92	36	1022	1017
7	19.8	23.7	8.7	11.3	14.3	17.6	9.3	3.7	0.0	0.0	0.0		84	43	1017	1015
8	25.3	24.5	5.7	11.4	15.5	18.0	10.5	2.5	0.0	0.6	0.0		88	27	1016	1006
9	31.5	24.7	16.1	11.7	23.8	18.2	18.8	0.0	5.8	0.0	0.0		69	29	1006	1004
10	35.5	24.0	18.3	11.8	26.9	17.9	21.9	0.0	8.9	0.0	0.0		91	23	1009	1005
11	30.1	24.7	17.0	11.8	23.6	18.3	18.6	0.0	5.6	0.0	0.0		93	42	1009	1005
12	26.2	25.9	15.3	12.2	20.8	19.1	15.8	0.0	2.8	0.0	0.2		92	52	1005	1003
13	27.7	25.8	16.1	12.7	21.9	19.3	16.9	0.0	3.9	2.0	1.8		95	56	1008	1006
14	28.7	25.7	17.0	12.9	22.9	19.3	17.9	0.0	4.9	0.0	0.0		96	36	1010	1008
15	28.9	24.6	16.8	12.4	22.9	18.5	17.9	0.0	4.9	10.6	9.8		88	31	1011	1007
16	29.1	23.9	14.3	12.0	21.7	18.0	16.7	0.0	3.7	1.3	1.2		93	30	1007	1000
17	18.0	25.4	11.9	12.3	15.0	18.9	10.0	3.0	0.0	4.4	4.0		94	30	1005	1000
18	24.9	24.4	11.8	12.5	18.4	18.5	13.4	0.0	0.4	0.1	0.2		92	35	1009	1005
19	24.0	24.9	14.6	12.4	19.3	18.7	14.3	0.0	1.3	0.4	0.2		78	41	1014	1002
20	26.2	25.3	11.5	11.8	18.9	18.5	13.9	0.0	0.9	0.3	0.0		84	29	1016	1012
21	30.9	25.8	15.3	12.8	23.1	19.3	18.1	0.0	5.1	m	0.0		81	35	1012	1003
22	30.3	26.8	16.4	12.4	23.4	19.6	18.4	0.0	5.4	m	0.0		87	31	1006	1001
23	25.8	25.9	11.8	12.7	18.8	19.3	13.8	0.0	0.8	m	0.0		91	36	1010	1006
24	27.2	26.4	12.3	12.0	19.8	19.2	14.8	0.0	1.8	m	0.0		87	27	1011	1009
25	31.7	26.3	15.5	12.1	23.6	19.2	18.6	0.0	5.6	m	0.0		82	22	1010	1006
26	26.8	27.2	15.1	12.4	21.0	19.8	16.0	0.0	3.0	m	0.0		83	30	1011	1005
27	22.2	26.4	13.5	12.7	17.9	19.6	12.9	0.1	0.0	m	7.4		93	59	1012	1008
28	18.1	26.1	13.1	12.4	15.6	19.3	10.6	2.4	0.0	m	57.6		94	70	1009	1002
29	25.3	26.8	13.4	12.1	19.4	19.5	14.4	0.0	1.4	m	0.0		82	33	1015	1009
30	25.2	26.2	12.5	12.8	18.9	19.5	13.9	0.0	0.9	m	0.0		79	29	1019	1016
31	27.3	25.7	11.9	12.2	19.6	19.0	14.6	0.0	1.6	m	0.0		76	26	1021	1013
Total							467.5	17.2	81.7	20.4	82.8		Extreme / Date	Extreme / Date	Extreme / Date	Extreme / Date
Avg	26.5	25.2	13.6	12.1	20.1	18.7	1981-2010 Normal			59.0	Normal					
Extreme	35.5		5.7				424.0	30.7	51.7	179.3	Cumulative		96	22	1022	1000
Date	10		8							226.5	Cumulative Normal		14	25	6	16

Note: Red numbers indicate manual calculation; Red cell indicate data not available

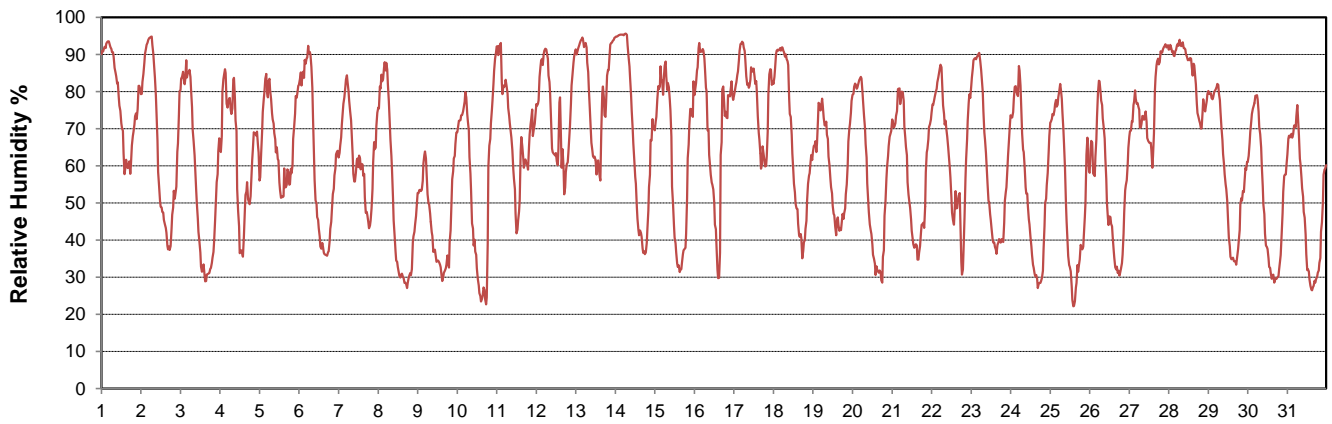
SRC proudly recognizes the following CRS supporters:



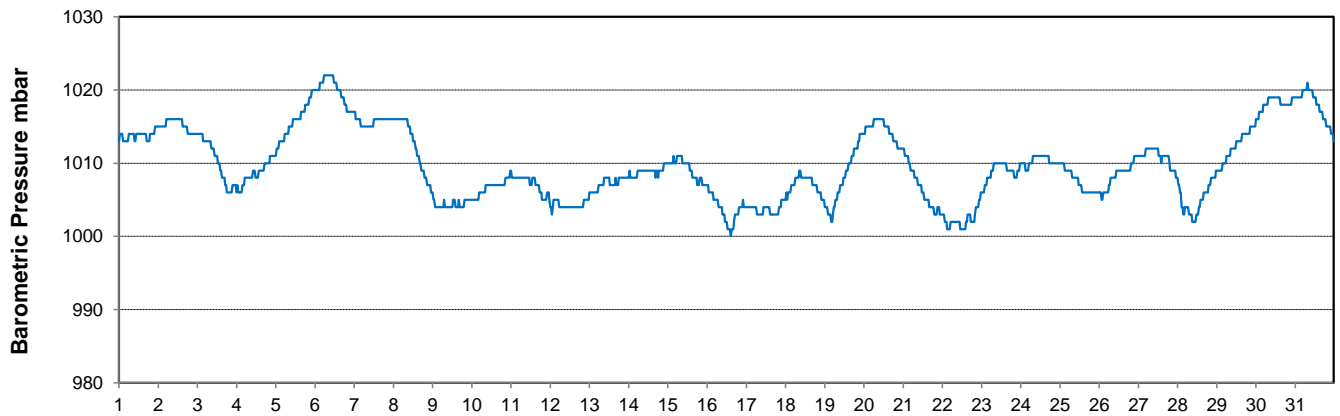
Temperature and Precipitation for July 2015



Relative Humidity for July 2015



Barometric Pressure Corrected to Sea Level for July 2015





SRC CLIMATE REFERENCE STATION DAILY DATA REPORT



SASKATOON STATION 4057180

Saskatchewan 52°09' N 106°36' W 497 m asl Estab. 1963

Preliminary **JULY 2015**

Day	Wind Gust			Soil Temperatures at 0900hrs								Soil Moisture 30 cm	Radiation				
	Max	Direction	Time	Surface	5 cm	10 cm	20 cm	50 cm	100 cm	150 cm	300 cm		Bright Sunshine	Possible	% Possible	Global	Diffuse
	km/h			°C	°C	°C	°C	°C	°C	°C	°C	%	hours	hours		MJ/m ²	MJ/m ²
1	24.1	WSW	13:38	18.5	18.0	18.5	18.5	17.0	13.0	11.0	8.0	14	2.6	16.7	15.6	10.7	7.2
2	21.4	NNW	12:24	20.0	18.5	18.5	18.5	16.5	13.0	11.5	8.0	13.9	10.9	16.7	65.5	21.4	9.4
3	44.6	NNE	21:26	23.5	19.5	20.0	19.5	17.0	13.0	11.5	8.0	13.9	12.2	16.6	73.4	24.9	7.5
4	38.3	NNW	13:32	17.5	21.0	21.5	21.0	17.5	13.0	11.5	8.5	13.9	7.2	16.6	43.3	18.0	8.3
5	39.9	N	15:04	15.5	18.5	19.5	20.0	17.5	13.0	11.5	8.5	13.7	8.6	16.6	51.8	17.6	9.0
6	26.2	SW	16:33	13.5	16.0	17.0	18.5	17.0	13.0	11.5	8.5	13.4	12.2	16.6	73.7	23.8	8.0
7	37.0	N	12:31	18.5	18.0	18.5	19.0	17.0	13.0	11.5	8.5	13.4	11.2	16.5	67.7	21.9	9.0
8	27.4	SSW	15:41	16.5	15.5	16.5	18.0	17.0	13.5	12.0	8.5	13.2	14.0	16.5	84.8	28.9	3.4
9	33.9	SW	2:50	23.0	19.5	19.5	19.5	17.0	13.5	12.0	8.5	13.4	14.0	16.5	85.0	27.4	4.8
10	34.5	NE	18:48	25.5	22.0	22.0	21.5	17.5	13.5	12.0	8.5	13.6	14.4	16.5	87.5	26.4	6.0
11	36.1	ESE	12:01	25.0	23.0	23.5	23.0	18.5	13.5	12.0	9.0	13.8	7.4	16.4	45.1	16.1	6.0
12	30.1	E	15:38	20.5	21.5	22.5	22.0	18.5	13.5	12.0	9.0	13.8	7.4	16.4	45.1	17.5	8.4
13	30.1	WNW	16:09	23.0	21.5	22.0	22.0	18.5	14.0	12.0	9.0	13.7	4.7	16.4	28.7	13.2	7.3
14	32.9	NW	14:06	19.5	21.0	21.5	21.5	18.5	14.0	12.0	9.0	13.8	9.0	16.3	55.1	21.4	6.7
15	43.9	NW	19:51	19.0	20.5	21.0	21.5	18.5	14.0	12.5	9.0	15.5	9.2	16.3	56.5	22.7	5.7
16	48.2	SSW	13:45	21.0	20.5	21.0	21.5	18.5	14.0	12.5	9.0	15.3	9.7	16.2	59.7	21.9	6.0
17	39.5	WSW	2:01	14.0	18.5	19.5	20.5	18.5	14.0	12.5	9.0	15.5	3.9	16.2	24.1	12.6	8.4
18	39.6	W	15:23	15.5	16.5	17.5	18.0	18.0	14.5	12.5	9.5	15.1	8.7	16.2	53.8	20.3	7.7
19	54.0	NNW	9:33	19.0	18.5	19.0	19.0	17.5	14.5	12.5	9.5	14.9	11.7	16.1	72.6	22.6	6.5
20	26.7	WNW	14:11	19.0	17.0	17.5	18.5	17.5	14.0	13.0	9.5	14.6	14.3	16.1	88.9	26.4	3.8
21	51.2	SSW	14:15	19.5	19.5	20.0	20.0	17.5	14.0	13.0	9.5	14.6	12.7	16.0	79.2	25.2	3.7
22	45.4	WNW	20:14	22.0	21.5	22.0	21.5	18.0	14.0	13.0	9.5	14.7	12.5	16.0	78.2	22.0	7.2
23	26.7	WNW	1:11	18.5	19.5	20.5	21.0	18.5	14.5	13.0	9.5	14.6	14.5	15.9	91.0	21.9	7.8
24	27.8	NW	13:13	20.5	19.5	20.0	20.5	18.5	14.5	13.0	9.5	14.4	14.9	15.9	93.7	27.1	2.8
25	36.7	W	16:43	21.5	20.5	21.0	21.5	18.5	14.5	13.0	10.0	14.3	13.9	15.9	87.7	25.0	5.7
26	33.4	WNW	10:55	19.0	21.0	21.5	22.0	19.0	14.5	13.0	10.0	14.3	14.0	15.8	88.6	24.5	4.6
27	33.9	NNE	22:24	18.0	20.0	21.0	21.5	19.0	14.5	13.0	10.0	14.2	0.9	15.8	5.7	6.4	4.5
28	55.2	NNE	3:24	13.5	16.5	17.5	19.0	18.5	14.5	13.0	10.0	21.4	0.0	15.7	0.0	2.8	2.1
29	49.4	NW	15:16	18.5	15.5	16.0	16.5	17.0	14.5	13.0	10.0	29.8	13.2	15.7	84.3	25.8	2.9
30	53.4	NW	14:38	18.0	16.0	16.5	17.5	17.0	14.5	13.0	10.0	29.2	14.2	15.6	91.0	23.5	4.4
31	25.2	W	11:16	18.5	16.0	16.5	17.0	17.0	14.5	13.0	10.0	28.5	14.6	15.6	93.9	26.0	3.1
Total													318.7	502.01	63.5	645.9	187.9
Mean				19.2	19.0	19.6	20.0	17.8	13.9	12.3	9.1	15.9	1981-2010 Normal for Radiation				
Extreme	55.2	NNE	3:24	1971- 2000 Normal for Soil Temperatures								298.8	501.80	59.5	650.6	213.5	
Date	28			17.5	18.0	18.9	16.7	13.1	10.9	7.5		No. of Bright Sunshine days = 30					

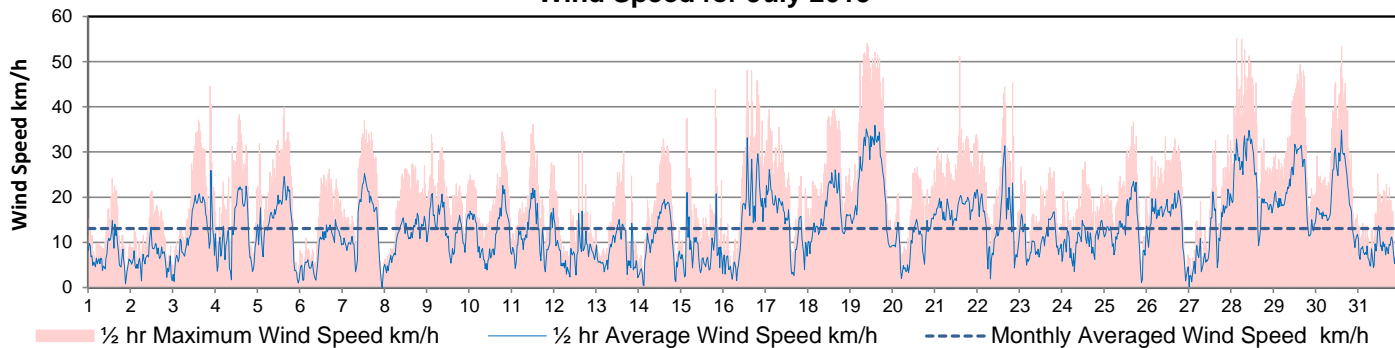
Note: Red numbers indicate manual calculation

NOTE: thick smoke from forest fires in northern Saskatchewan July 1

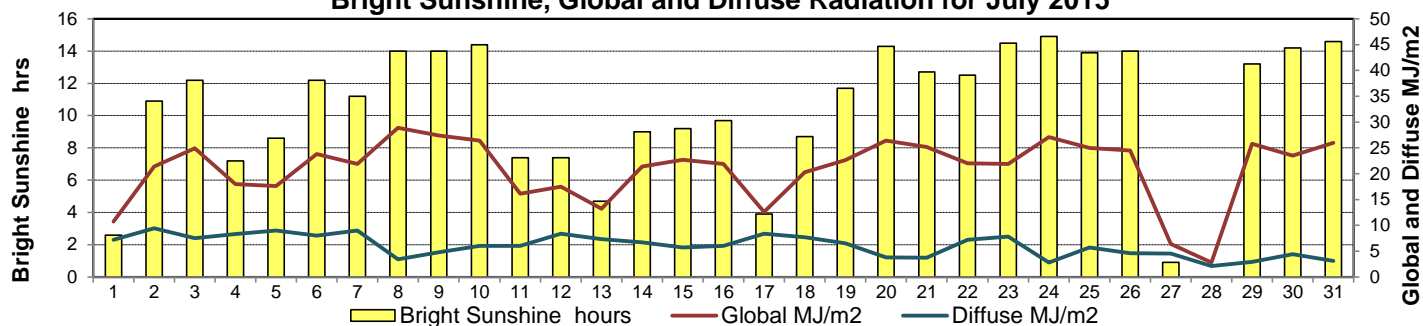
SRC proudly recognizes the following CRS supporters:



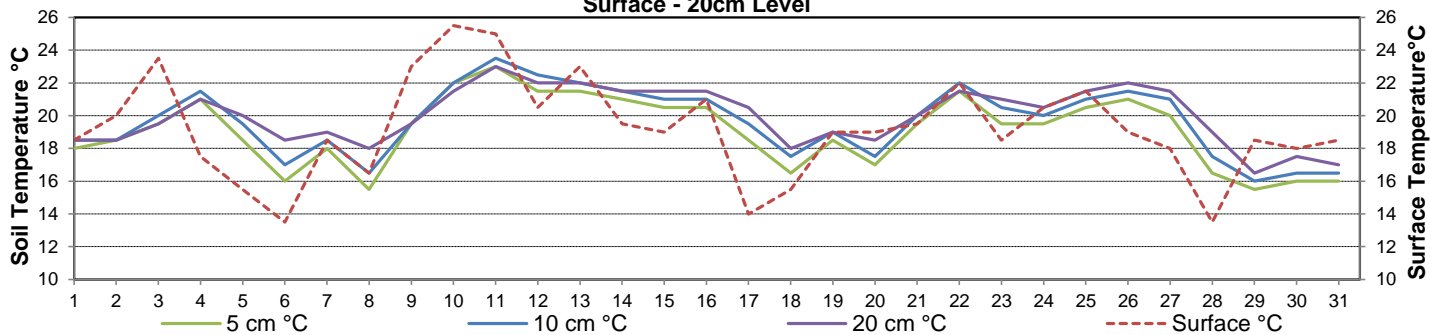
Wind Speed for July 2015



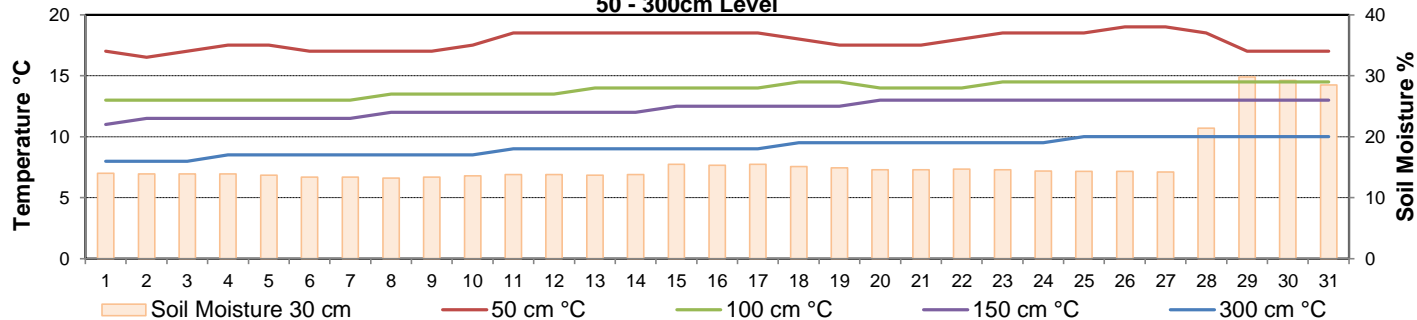
Bright Sunshine, Global and Diffuse Radiation for July 2015



Soil Temperatures for July 2015 Surface - 20cm Level



Soil Temperatures for July 2015 50 - 300cm Level





SRC CLIMATE REFERENCE STATION DAILY DATA REPORT

SASKATOON STATION 4057180

52°09' N 106°36' W 497 m asl Estab. 1963

Preliminary **JULY 2015**

Extreme Records for July

Max/Min Temperature °C				Precipitation - Monthly mm				Wind Monthly km/h				CRS Bright Sunshine - Monthly			
S'toon Area	Date	Site	S'toon CRS Date	S'toon Area	Date	Site	S'toon CRS Date	S'toon Airport	Date	S'toon CRS**	Date	Hours	Year	No. of Days	Year
40.0	(1919,41)	1946 (SE SA)	US	39.3	05/2001			162.9	1928	SE		125.9	1971		
-0.6	25/1918	SE		1.7	02,09/1967,78			0.0	1988	SC		13.0	1984	113 ^E	05/1955
												160	1985	386.2	1974
														185.5	1998
														27	2004

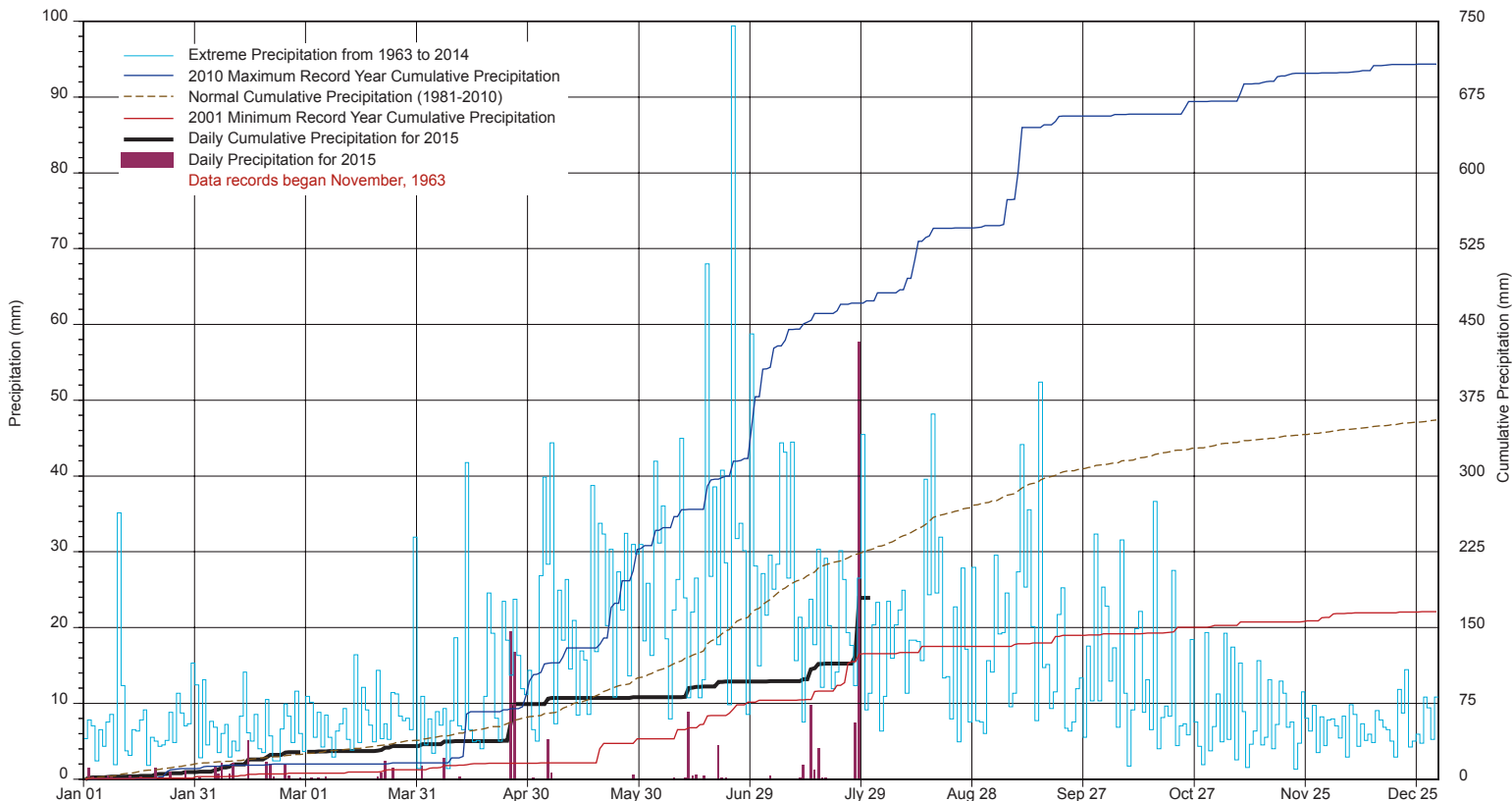
**1975 forward * more than one year

Notable Events for CRS Saskatoon - July						Saskatoon Area Stations			Glossary	
Element	Type	Day	New Record	Old Record	Year	SM	NWMP	c. 1892-1901	T	Trace of precipitation
Precipitation (mm)	Daily maximum	28	57.6	26.6	2012	SE	Eby	1901-1941	Normal	30 year average beginning with the decade
						US	Univ. of Sask.	1915-1964	SOG	Depth of snow-on-the-ground in cm
						S	Saskatoon	1941-1942	na	not available
						SA	Saskatoon A	1942 -	Degree-days	
						NRC	Nat. Res. Council	1952-1966	Tm	Mean Temperature
						SRC	Sask. Res. Council	1963-	Growing	(Tm-5°C); if Tm ≤ 5°C then GDD = 0
						SWT	S'toon Water Treatment Plant	1974 -	Heating	(18°C-Tm); if Tm ≤ 18°C then HDD = 0
						SC	S'toon Central Ave	1974-1989	Cooling	(Tm-18°C); if Tm ≥ 18°C then CDD = 0
						S1	Saskatoon 1	1976-1978	Extreme Cooling	(Tm-24°C); if Tm ≥ 24°C then CDD = 0
						S2	Saskatoon 2	1977-1990		
						K	S'toon Kernen Farm	1993-2004		
						KCS	S'toon Kernen Farm CS	1996-		
						RCS	Environment Canada	2008-		
						SF	Sutherland Forestry	1943-1970		

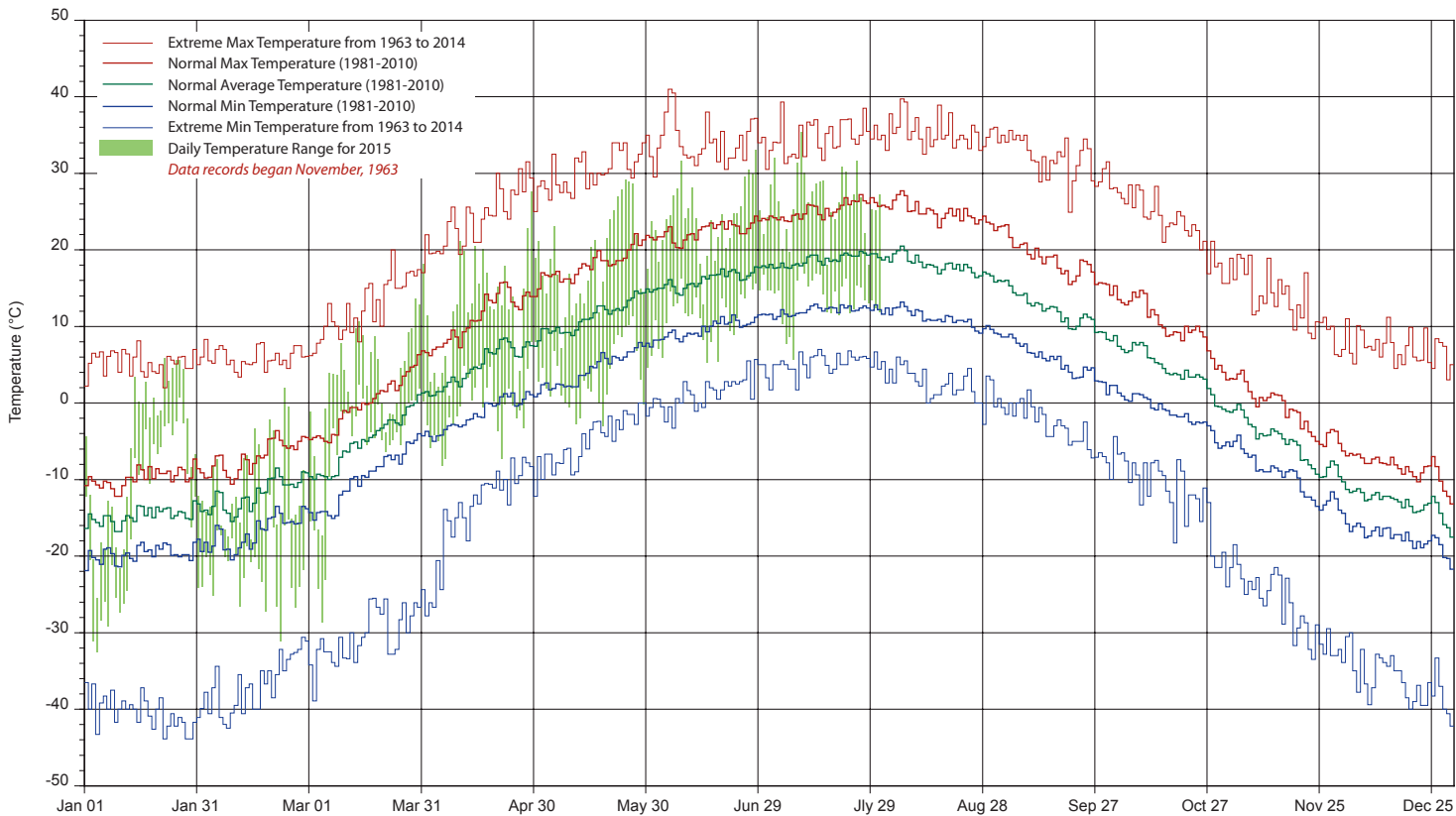
SRC proudly recognizes the following CRS supporters:



SASKATCHEWAN RESEARCH COUNCIL SASKATOON CLIMATE REFERENCE STATION 2015 PRECIPITATION AND NORMALS



2015 TEMPERATURES AND NORMALS



SRC proudly recongnizes the following CRS supporters:

