



SRC CLIMATE REFERENCE STATION DAILY DATA REPORT

SASKATOON STATION 4057180

Saskatchewan 52°09' N 106°36' W 497 m asl Estab. 1963

Preliminary **JULY 2022**

Day	Temperature						Degree-days			Precipitation			Relative Humidity		Station Pressure (sea level)	
	Max	Normal Max	Min	Normal Min	Mean	Normal Mean	Growing	Heating	Cooling	Weighing Gauge	Tipping Bucket	Notes	Max ½ hr Avg	Min ½ hr Avg	Max ½ hr Avg	Min ½ hr Avg
	°C	1991-2020	°C	1991-2020	°C	1991-2020	5°C base	18°C base	18°C base	mm	mm		%	%	mbar	mbar
1	21.7	23.2	7.9	11.9	14.8	17.6	9.8	3.2	0.0	0.0	0.0		84	34	1018	1016
2	19.5	24.1	10.4	11.6	15.0	17.9	10.0	3.0	0.0	0.0	0.0		82	53	1018	1015
3	23.1	24.5	9.6	11.7	16.4	18.1	11.4	1.6	0.0	1.0	1.0	showers	89	40	1016	1014
4	22.4	24.3	10.8	12.1	16.6	18.2	11.6	1.4	0.0	0.0	0.0		91	38	1017	1014
5	16.9	24.3	12.9	12.4	14.9	18.4	9.9	3.1	0.0	0.7	0.5	showers	87	65	1018	1015
6	21.6	24.2	12.5	11.7	17.1	18.0	12.1	0.9	0.0	0.4	0.8	showers	93	58	1019	1015
7	23.9	24.5	11.9	12.2	17.9	18.4	12.9	0.1	0.0	0.0	0.0		88	45	1020	1017
8	32.1	24.4	16.8	12.2	24.5	18.3	19.5	0.0	6.5	6.0	6.1		91	23	1017	1011
9	28.2	25.3	17.9	12.6	23.1	19.0	18.1	0.0	5.1	0.0	0.0		90	41	1014	1012
10	26.3	25.9	14.7	13.3	20.5	19.6	15.5	0.0	2.5	0.7	0.3	showers	90	36	1014	1012
11	27.3	24.4	12.7	13.2	20.0	18.8	15.0	0.0	2.0	0.0	0.0		79	28	1016	1014
12	30.6	25.7	13.4	12.4	22.0	19.1	17.0	0.0	4.0	0.0	0.0		79	26	1016	1012
13	33.7	26.0	17.4	13.2	25.6	19.6	20.6	0.0	7.6	0.8	0.8	t-storm	73	26	1012	1006
14	27.3	25.5	15.3	13.1	21.3	19.3	16.3	0.0	3.3	6.6	6.6	t-storm	83	26	1016	1009
15	31.8	24.7	18.4	12.8	25.1	18.8	20.1	0.0	7.1	0.0	0.0		81	40	1014	1010
16	36.6	25.0	18.1	12.5	27.4	18.8	22.4	0.0	9.4	0.0	0.0		85	14	1010	1006
17	29.7	26.0	17.3	13.1	23.5	19.6	18.5	0.0	5.5	9.3	9.7	t-storm	88	14	1014	1006
18	28.9	25.1	15.0	13.6	22.0	19.4	17.0	0.0	4.0	0.6	0.3	t-storm	92	42	1010	1004
19	29.4	24.9	17.5	12.7	23.5	18.8	18.5	0.0	5.5	0.5	0.5	t-storm	89	28	1008	1003
20	26.0	25.4	14.0	12.5	20.0	18.9	15.0	0.0	2.0	0.3	0.3	t-storm	88	26	1012	1008
21	28.7	25.2	14.3	13.2	21.5	19.2	16.5	0.0	3.5	0.0	0.0		68	24	1010	1008
22	25.1	26.3	14.3	12.6	19.7	19.5	14.7	0.0	1.7	0.0	0.0		75	29	1014	1008
23	21.6	26.4	11.8	13.7	16.7	20.1	11.7	1.3	0.0	0.0	0.0		88	41	1018	1014
24	28.7	25.8	10.4	12.6	19.6	19.2	14.6	0.0	1.6	2.7	2.8	showers	91	30	1019	1012
25	21.7	25.0	15.2	12.5	18.5	18.8	13.5	0.0	0.5	0.0	0.0		92	47	1014	1013
26	24.6	26.2	12.1	12.2	18.4	19.2	13.4	0.0	0.4	0.2	0.3	showers	90	28	1015	1013
27	25.1	26.2	8.9	12.7	17.0	19.5	12.0	1.0	0.0	0.0	0.0		81	29	1019	1015
28	29.5	26.0	8.7	12.5	19.1	19.3	14.1	0.0	1.1	0.0	0.0		86	27	1020	1015
29	35.5	27.1	14.9	12.7	25.2	19.9	20.2	0.0	7.2	0.0	0.0		77	15	1015	1009
30	21.6	26.6	15.2	13.1	18.4	19.9	13.4	0.0	0.4	4.2	4.1	showers	91	75	1015	1010
31	26.2	25.5	15.1	12.7	20.7	19.1	15.7	0.0	2.7	1.3	1.5	showers	93	43	1015	1012
Total							471.0	15.6	83.6	35.3	35.3		Extreme / Date	Extreme / Date	Extreme / Date	Extreme / Date
Avg	26.6	25.3	13.7	12.6	20.2	19.0	1991-2020 Normal			60.1	Jly 1991-2020 Normal					
Extreme	36.6		7.9				433.2	25.9	56.1	189.8	Year to date 2022 Cumulative		93	14	1020	1003
Date	16		1							228.4	Year to date Cumulative Normal		6	16	7	19

Note: Red numbers indicate manual calculation; Red cell indicate data not available

SRC proudly recognizes the following CRS supporters:

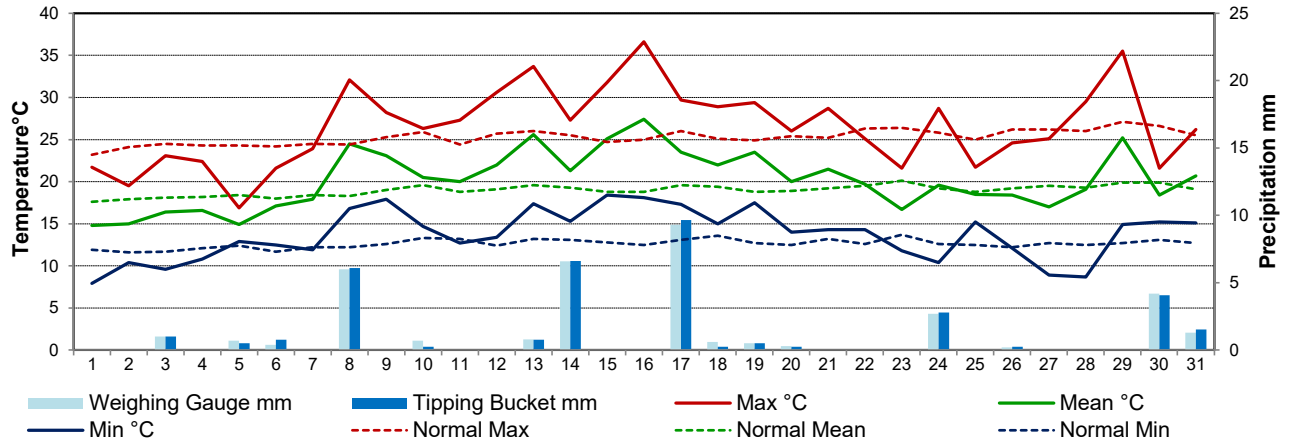


Agriculture and Agri-Food Canada

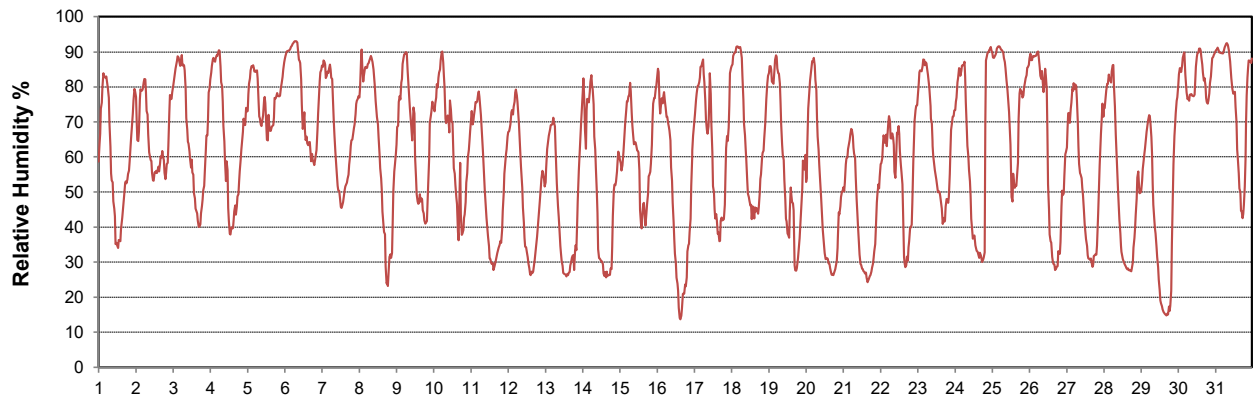
Agriculture et Agroalimentaire Canada



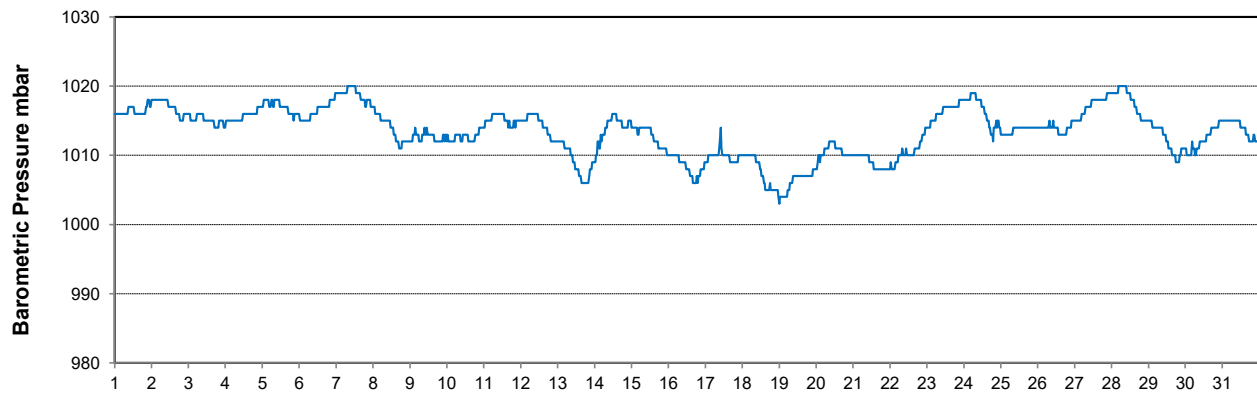
Temperature and Precipitation for July 2022



Relative Humidity for July 2022



Barometric Pressure Corrected to Sea Level for July 2022





SRC CLIMATE REFERENCE STATION DAILY DATA REPORT

SASKATOON STATION 4057180

Saskatchewan 52°09' N 106°36' W 497 m asl Estab. 1963

Preliminary **JULY 2022**

Day	Wind Gust			Wind Speed (10 meters) Daily Average	Soil Temperatures at 0900hrs								Radiation				
	Max	Direction	Time		Surface	5 cm	10 cm	20 cm	50 cm	100 cm	150 cm	300 cm	Bright Sunshine	Possible	% Possible	Global	Diffuse
	km/h			km/h	°C	°C	°C	°C	°C	°C	°C	°C	hours	hours		MJ/m ²	MJ/m ²
1	46.6	NE	14:41	12.8	16.5	15.5	16.5	17.0	15.5	13.0	10.5	7.5	13.2	16.7	79.2	25.6	11.0
2	32.7	E	12:48	14.9	16.0	17.5	18.0	18.0	15.5	13.0	10.5	7.5	8.7	16.7	52.3	19.0	12.1
3	28.3	NNE	6:24	10.8	16.5	17.0	17.5	17.5	15.5	13.0	10.5	7.5	10.6	16.6	63.7	25.9	7.7
4	33.5	E	14:39	12.5	18.0	17.5	18.0	18.0	16.0	13.0	10.5	7.5	3.7	16.6	22.3	15.1	12.0
5	37.3	E	15:49	16.6	17.5	17.5	17.5	17.5	16.0	13.0	10.5	7.5	1.5	16.6	9.0	7.9	6.6
6	32.7	NE	15:15	13.1	17.0	17.0	17.0	17.0	15.5	13.5	11.0	8.0	7.3	16.6	44.1	16.5	9.5
7	43.8	SE	23:50	18.3	18.0	16.5	17.0	17.0	15.5	13.5	11.0	8.0	13.8	16.5	83.5	27.5	5.8
8	41.6	SSE	5:00	19.6	18.0	19.0	19.5	18.5	16.0	13.5	11.0	8.0	8.6	16.5	52.1	20.1	7.8
9	47.7	NNW	11:09	10.4	22.5	19.5	20.0	19.5	16.5	13.5	11.0	8.0	12.7	16.5	77.1	24.9	6.7
10	44.5	WNW	18:13	11.6	17.5	19.5	20.0	20.0	17.0	13.5	11.0	8.0	6.5	16.5	39.5	14.8	7.2
11	58.9	W	14:54	19.7	20.5	17.5	18.0	18.5	16.5	13.5	11.0	8.0	15.5	16.4	94.5	28.7	4.0
12	39.7	SSW	13:28	11.5	21.0	18.0	18.5	19.0	16.5	14.0	11.0	8.0	15.9	16.4	97.1	28.6	3.5
13	55.9	SSW	16:08	20.1	25.5	20.0	20.5	20.5	17.0	14.0	11.5	8.5	12.1	16.4	74.0	23.4	8.4
14	34.5	N	1:48	12.6	19.0	20.0	20.5	20.5	17.5	14.0	11.5	8.5	13.1	16.3	80.3	28.0	3.8
15	38.8	ESE	12:39	14.3	24.0	20.0	20.5	20.5	17.5	14.0	11.5	8.5	14.2	16.3	87.3	26.8	5.4
16	39.2	SSW	14:31	15.0	24.5	22.0	22.0	21.5	18.0	14.5	11.5	8.5	15.2	16.2	93.7	28.3	4.0
17	77.3	W	10:07	10.6	24.0	22.5	23.0	22.5	18.5	14.5	11.5	8.5	12.1	16.2	74.7	21.4	6.1
18	30.4	ESE	15:51	9.9	23.0	21.0	21.5	21.5	19.0	15.0	12.0	8.5	11.8	16.2	73.1	22.3	8.7
19	55.4	WNW	13:47	12.8	23.5	21.5	21.5	21.5	19.0	15.0	12.0	8.5	12.4	16.1	77.0	24.9	6.1
20	55.8	NW	1:16	23.8	18.0	19.5	20.5	21.0	19.0	15.0	12.0	8.5	14.7	16.1	91.5	27.5	5.0
21	53.8	NW	12:55	19.6	21.0	18.5	19.5	20.0	18.5	15.5	12.5	9.0	13.8	16.0	86.1	25.5	6.1
22	44.4	NW	16:02	13.5	18.0	19.0	20.0	20.0	18.0	15.5	12.5	9.0	6.9	16.0	43.2	15.4	7.1
23	26.5	NNW	11:01	9.6	16.0	18.0	18.5	19.0	18.0	15.5	12.5	9.0	6.0	15.9	37.7	15.6	10.4
24	59.6	NNE	19:43	10.3	18.5	17.0	17.5	18.5	17.5	15.5	12.5	9.0	12.3	15.9	77.4	24.7	5.5
25	27.1	NNW	17:09	8.5	17.0	19.5	20.0	20.0	17.5	15.5	12.5	9.0	0.7	15.8	4.4	9.5	8.3
26	45.2	NW	16:53	13.4	16.0	17.0	18.0	18.5	17.5	15.5	12.5	9.0	10.1	15.8	64.0	20.0	7.6
27	36.1	N	16:25	9.2	17.5	15.5	16.5	18.0	17.0	15.5	12.5	9.0	15.0	15.7	95.3	27.2	5.0
28	29.3	SE	19:04	7.6	19.5	16.5	17.5	18.5	17.0	15.5	12.5	9.5	14.6	15.7	93.1	26.2	4.6
29	35.0	SW	13:09	12.2	22.0	19.0	19.5	20.0	17.5	15.5	12.5	9.5	14.1	15.6	90.2	25.9	4.7
30	46.4	NW	4:38	14.7	19.0	21.5	22.0	21.5	18.0	15.5	12.5	9.5	1.7	15.6	10.9	6.7	5.5
31	20.3	N	15:31	6.8	16.5	19.0	19.5	19.5	18.0	15.5	13.0	9.5	4.7	15.5	30.3	13.9	8.0
Total													323.5	501.8	64.5	667.8	214.2
Mean				13.4	19.4	18.7	19.2	19.4	17.2	14.4	11.6	8.5	1991-2020 Normal				
Extreme	77.3	W	10:07		1971- 2000 Normal for Soil Temperatures								305.5	501.60	60.9	662.0	203.3
Date	17				17.5	18.0	18.9	16.7	13.1	10.9	7.5	No. of Bright Sunshine days = 31					

Note: Red numbers indicate manual calculation; Red cell indicate data not available

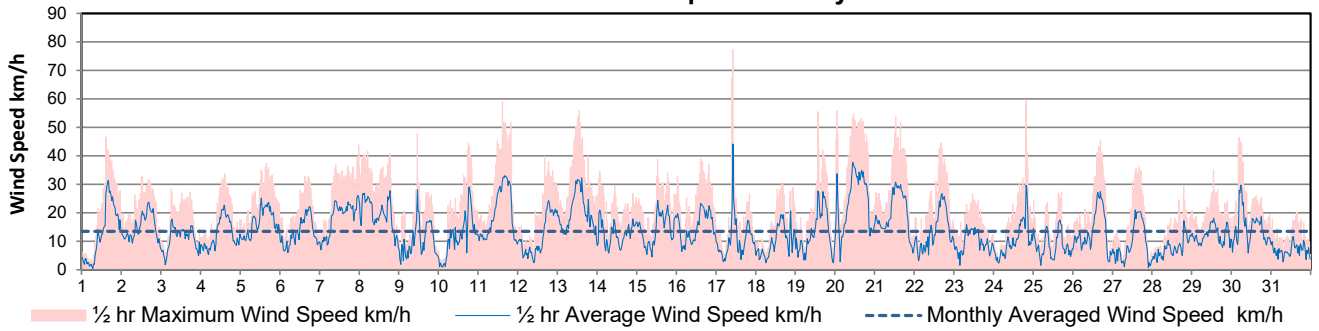
SRC proudly recognizes the following CRS supporters:



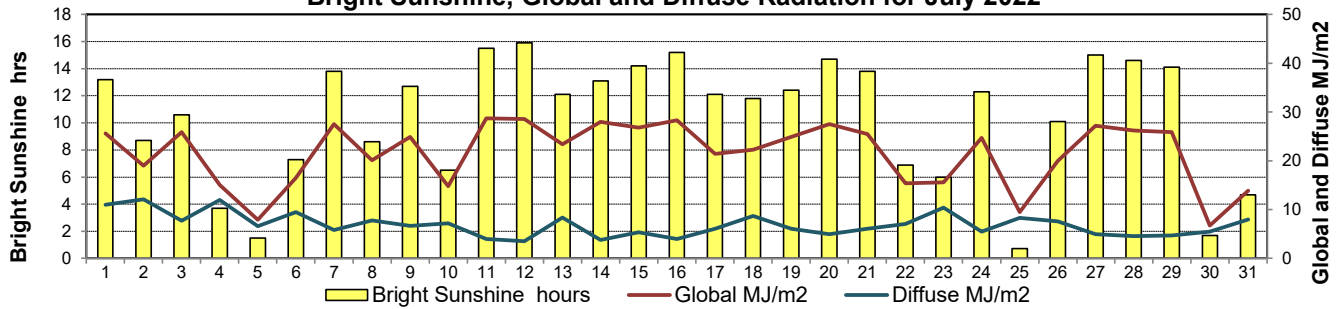
Agriculture and Agri-Food Canada
Agriculture et Agroalimentaire Canada



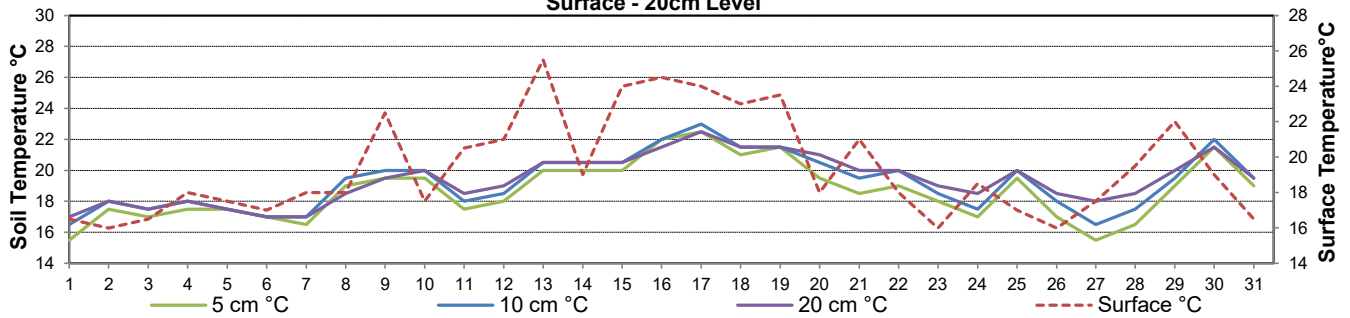
10 meter Tower Wind Speed for July 2022



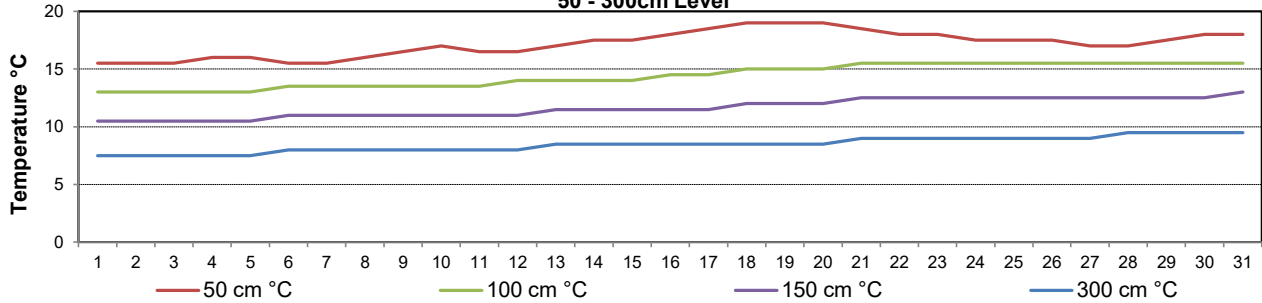
Bright Sunshine, Global and Diffuse Radiation for July 2022



**Soil Temperatures for July 2022
Surface - 20cm Level**



**Soil Temperatures for July 2022
50 - 300cm Level**





SRC CLIMATE REFERENCE STATION DAILY DATA REPORT

SASKATOON STATION 4057180

52°09' N 106°36' W 497 m asl Estab. 1963

Preliminary **JULY 2022**

Extreme Records for July

Max/Min Temperature °C				Precipitation - Monthly mm				Wind Monthly km/h				CRS Bright Sunshine - Monthly			
S'toon Area	Date	Site	S'toon CRS Date	S'toon Area	Date	Site	S'toon CRS Date	S'toon Airport	Date	S'toon CRS**	Date	Hours	Year	No. of Days	Year
40.0	(1919,41)1946	(SE SA) US	40.1 02/2021	162.9	1928	SE	125.9 1971	113 ^E	05/1955	160	1985	386.2	1974	31	1967*
-0.6	25/1918	SE	1.7 02.09/1967,78	0.0	1988	SC	5.0 2021					185.5	1998	27	2004

**1975 forward * more than one year

Notable Events for CRS Saskatoon - July						Saskatoon Area Stations			Glossary	
Element	Type	Day	New Record	Old Record	Day / Year	SM	NWMP	c. 1892-1901	T	Trace of precipitation
Temperature	Highest Maximum Daily	16	36.6	33.9	2017	SE	Eby	1901-1941	Normal	30 year average beginning with the decade
		9	17.9	17.8	1997	US	Univ. of Sask.	1915-1964	SOG	Depth of snow-on-the-ground in cm
	Highest Minimum Daily	15	18.4	18.4	2002	S	Saskatoon	1941-1942	na	not available
		16	18.1	18.0	2021	SA	Saskatoon A	1942 -	Degree-days	
	Highest Mean Daily	17	17.3	17.1	2007	NRC	Nat. Res. Council	1952-1966	Tm	Mean Temperature
		8	24.5	23.4	2011	SRC	Sask. Res. Council	1963-	Growing	(Tm-5°C); if Tm ≤ 5°C then GDD = 0
	16	27.4	24.1	2017	SWT	S'toon Water Treatment Plant	1974 -	Heating	(18°C-Tm); if Tm ≤ 18°C then HDD = 0	
Growing Degree-days	Highest Daily	8	19.5	18.4	2011	SC	S'toon Central Ave	1974-1989	Cooling	(Tm-18°C); if Tm ≥ 18°C then CDD = 0
		16	22.4	19.1	2017	S1	Saskatoon 1	1976-1978	Extreme Cooling	(Tm-24°C); if Tm ≥ 24°C then CDD = 0
Cooling Degree-days	Highest Daily	8	6.5	5.4	2011	S2	Saskatoon 2	1977-1990		
		16	9.4	6.1	2017	K	S'toon Kernen Farm	1993-2004		
Extreme Cooling Degree-days	Highest Daily	8	0.5	-----	-----	KCS	S'toon Kernen Farm CS	1996-		
		16	3.4	0.1	2017	RCS	Environment Canada	2008-		
						SF	Sutherland Forest	1943-1970		

SRC proudly recognizes the following CRS supporters:



Agriculture and Agri-Food Canada / Agriculture et Agroalimentaire Canada





SRC CLIMATE REFERENCE STATION DAILY DATA REPORT
SASKATOON STATION 4057180

52°09' N 106°36' W 497 m asl Estab. 1963

Preliminary July 2022

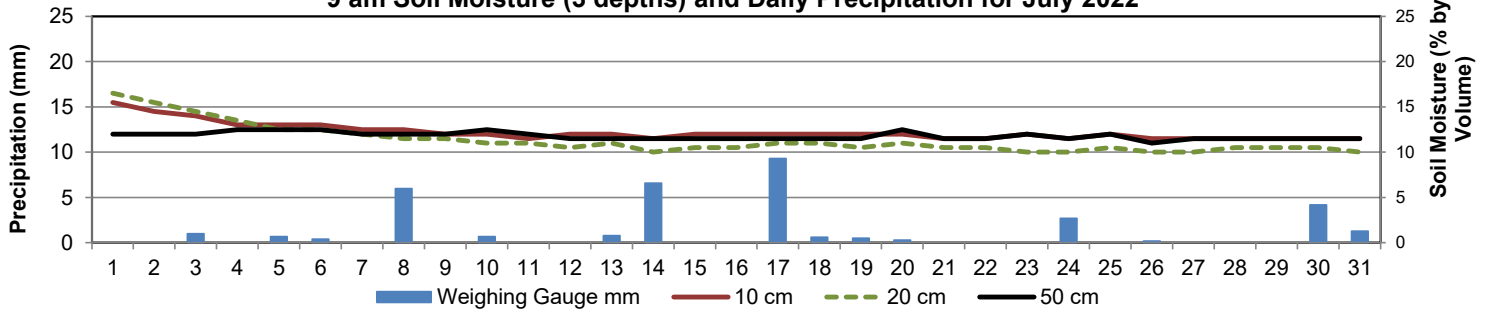
Day	2 meter Wind Speed			Soil Moisture at 0900 hrs (rounded to the 0.5%)														
	Daily Average	Max ½ hr Avg	½ hr Extreme Max	10 cm	20 cm	50 cm												
	km/h	km/h	km/h	% by volume (soil type is Loam (45.5% Sand, 41.1% Silt, 13.3% Clay))														
1	9.0	22.3	32.7	15.5	16.5	12.0												
2	11.0	17.5	24.7	14.5	15.5	12.0												
3	7.0	12.1	21.2	14.0	14.5	12.0												
4	8.0	15.6	24.7	13.0	13.5	12.5												
5	11.0	17.2	28.7	13.0	12.5	12.5												
6	9.0	16.0	28.1	13.0	12.5	12.5												
7	12.0	17.8	29.3	12.5	12.0	12.0												
8	13.0	20.0	34.4	12.5	11.5	12.0												
9	7.0	19.1	36.2	12.0	11.5	12.0												
10	8.0	19.6	35.0	12.0	11.0	12.5												
11	13.0	22.7	39.1	11.5	11.0	12.0												
12	8.0	16.4	27.5	12.0	10.5	11.5												
13	13.0	21.3	41.4	12.0	11.0	11.5												
14	9.0	13.6	26.4	11.5	10.0	11.5												
15	10.0	18.5	33.3	12.0	10.5	11.5												
16	10.0	17.6	31.6	12.0	10.5	11.5												
17	7.0	30.3	53.5	12.0	11.0	11.5												
18	7.0	15.0	24.1	12.0	11.0	11.5												
19	9.0	19.8	40.2	12.0	10.5	11.5												
20	16.0	26.0	41.4	12.0	11.0	12.5												
21	14.0	21.6	37.3	11.5	10.5	11.5												
22	9.0	19.0	31.6	11.5	10.5	11.5												
23	7.0	11.5	21.8	12.0	10.0	12.0												
24	7.0	20.5	45.4	11.5	10.0	11.5												
25	5.0	12.3	22.4	12.0	10.5	12.0												
26	9.0	19.1	32.7	11.5	10.0	11.0												
27	6.0	15.8	29.3	11.5	10.0	11.5												
28	5.0	12.6	22.9	11.5	10.5	11.5												
29	9.0	14.8	27.5	11.5	10.5	11.5												
30	10.0	19.3	31.6	11.5	10.5	11.5												
31	5.0	18.0	18.0	11.5	10.0	11.5												
Total																		
Mean				12	11	11.8												
Extreme	16.0	30.3	53.5	15.5	16.5	12.5												
Date	20	17	17	1	1	4												

Note: Red numbers indicate manual calculation; Red cell indicate data not available

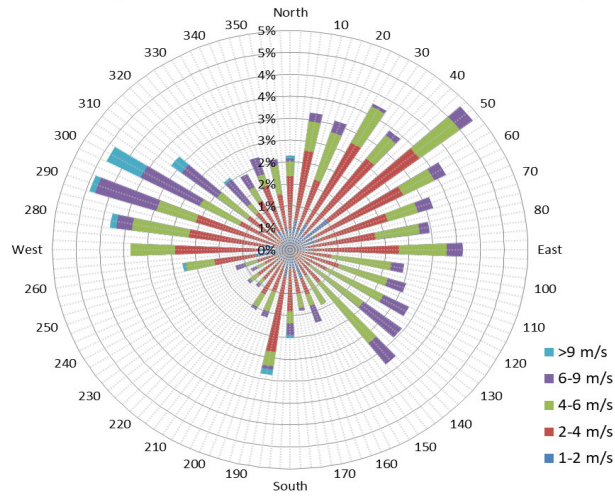
SRC proudly recognizes the following CRS supporters:



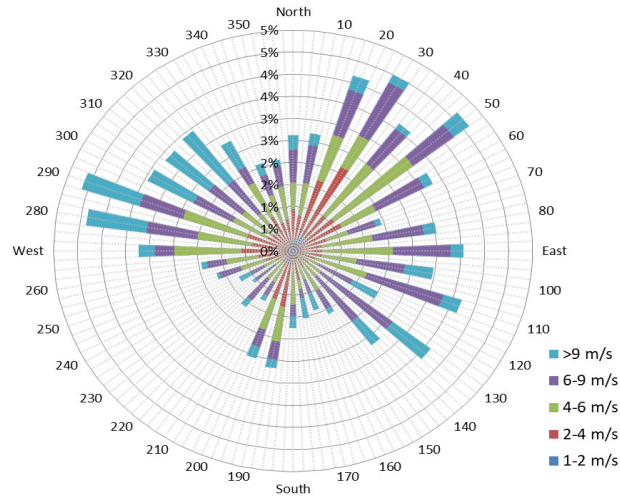
9 am Soil Moisture (3 depths) and Daily Precipitation for July 2022



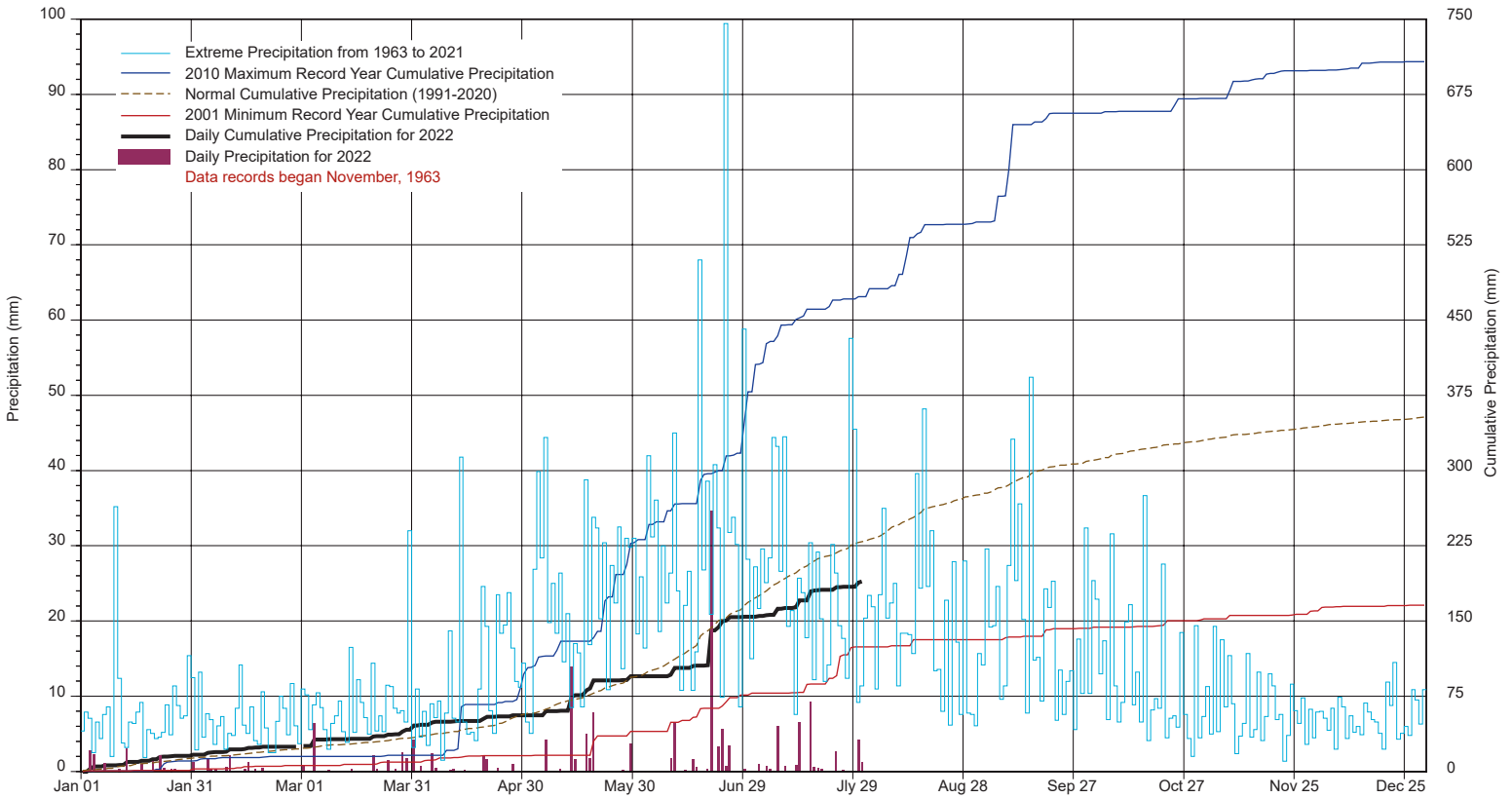
10 minute Average Wind Speed and Direction Saskatoon July 2022



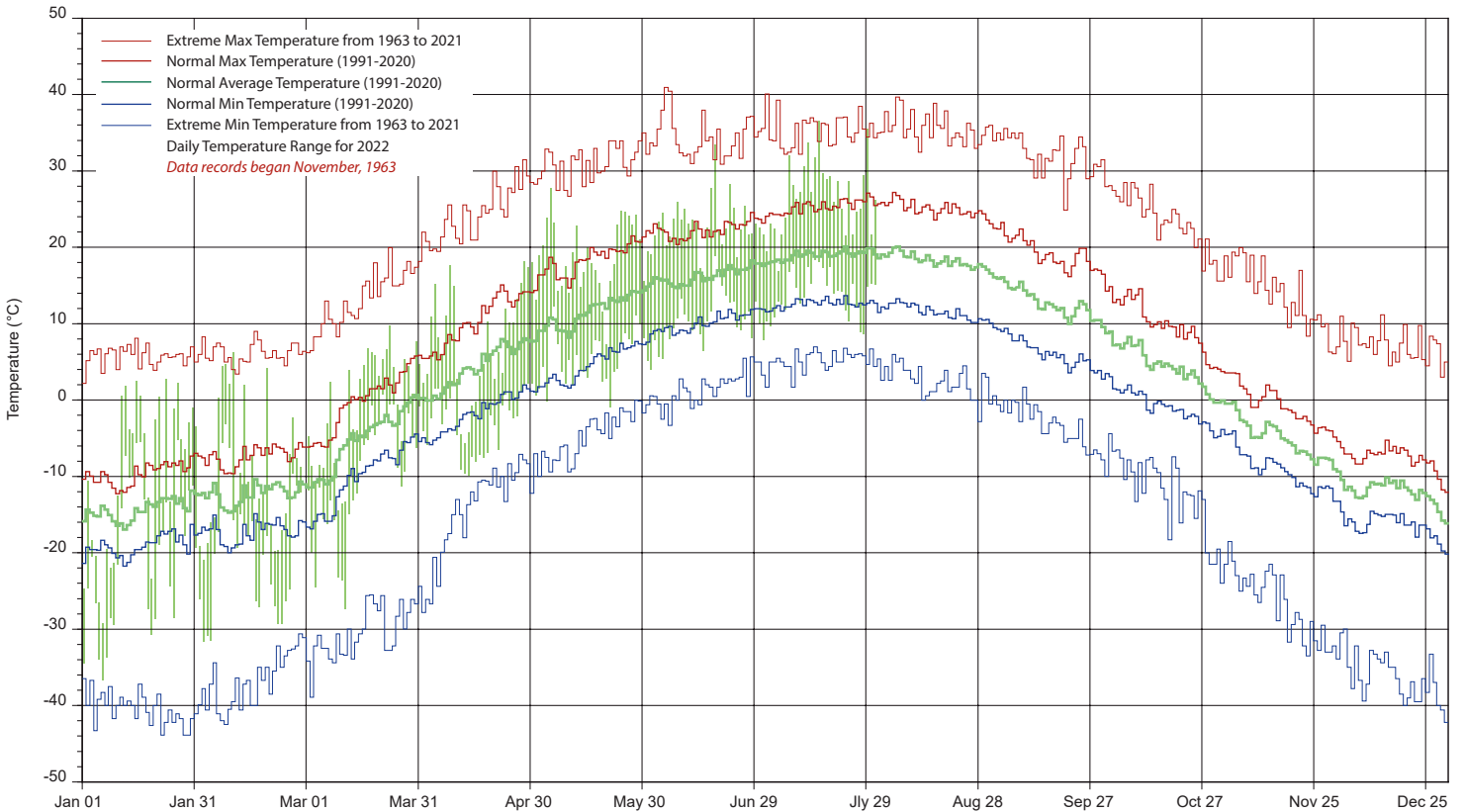
1/2 hr Maximum Wind Speed and Direction Saskatoon July 2022



SASKATCHEWAN RESEARCH COUNCIL SASKATOON CLIMATE REFERENCE STATION 2022 PRECIPITATION AND NORMALS



2022 TEMPERATURES AND NORMALS



SRC proudly recongnizes the following CRS supporters:

