



SRC CLIMATE REFERENCE STATION DAILY DATA REPORT

SASKATOON STATION 4057180

Saskatchewan 52°09' N 106°36' W 497 m asl Estab. 1963

Preliminary **JUNE 2017**

Day	Temperature						Degree-days			Precipitation			Relative Humidity		Station Pressure (sea level)	
	Max	Normal Max	Min	Normal Min	Mean	Normal Mean	Growing	Heating	Cooling	Weighing Gauge	Tipping Bucket	Notes	Max ½ hr Avg	Min ½ hr Avg	Max ½ hr Avg	Min ½ hr Avg
	°C	1981-2010	°C	1981-2010	°C	1981-2010	5°C base	18°C base	18°C base	mm	mm		%	%	mbar	mbar
1	33.7	21.3	14.1	8.2	23.9	14.8	18.9	0.0	5.9	0.0	0.0		49	18	1008	1002
2	27.6	21.7	14.8	8.2	21.2	15.0	16.2	0.0	3.2	4.3	4.8	light rain / hail / t-storm	79	32	1007	1002
3	27.1	21.7	12.9	8.3	20.0	15.0	15.0	0.0	2.0	0.0	0.0		71	16	1012	1008
4	31.6	22.4	13.3	8.6	22.5	15.5	17.5	0.0	4.5	0.0	0.0		73	16	1013	1009
5	28.1	23.0	14.0	9.2	21.1	16.1	16.1	0.0	3.1	0.2	0.4	light rain	77	30	1015	1007
6	24.4	20.9	10.7	9.5	17.6	15.2	12.6	0.4	0.0	0.0	0.0		81	21	1021	1016
7	27.2	20.3	10.3	8.4	18.8	14.3	13.8	0.0	0.8	0.0	0.0		69	18	1020	1016
8	28.1	20.2	13.2	8.0	20.7	14.1	15.7	0.0	2.7	0.0	0.0		60	20	1016	1006
9	24.8	21.3	15.0	8.7	19.9	15.0	14.9	0.0	1.9	1.9	3.2	ligh rain	78	31	1005	995
10	21.4	22.0	9.2	9.1	15.3	15.5	10.3	2.7	0.0	0.0	0.0		86	35	1000	994
11	18.6	22.1	6.6	9.0	12.6	15.6	7.6	5.4	0.0	0.0	0.0		93	36	1010	1000
12	25.0	21.3	6.0	9.1	15.5	15.2	10.5	2.5	0.0	0.0	0.0		83	31	1014	1009
13	21.0	22.6	12.9	8.7	17.0	15.6	12.0	1.0	0.0	1.1	1.4	light rain	88	39	1009	1007
14	18.8	23.0	11.5	10.0	15.2	16.5	10.2	2.8	0.0	0.4	1.2	light rain	90	47	1007	1002
15	19.2	23.1	10.0	9.3	14.6	16.2	9.6	3.4	0.0	0.0	0.0		90	50	1006	1004
16	21.2	23.5	6.6	10.0	13.9	16.7	8.9	4.1	0.0	0.0	0.0		95	40	1006	1003
17	17.0	22.8	12.7	10.7	14.9	16.7	9.9	3.1	0.0	5.7	6.2	light rain	90	40	1011	1003
18	22.3	23.3	8.6	10.4	15.5	16.8	10.5	2.5	0.0	0.5	1.4	light rain	94	33	1014	1010
19	19.9	23.7	9.8	11.3	14.9	17.5	9.9	3.1	0.0	0.0	0.0		89	36	1016	1013
20	21.4	22.7	9.0	10.3	15.2	16.5	10.2	2.8	0.0	0.0	0.0		84	34	1016	1003
21	20.4	23.8	11.9	10.5	16.2	17.2	11.2	1.8	0.0	1.4	2.2	light rain	89	27	1005	1001
22	14.4	23.3	8.9	11.5	11.7	17.4	6.7	6.3	0.0	2.9	3.4	light rain	91	50	1018	1004
23	17.8	23.1	4.9	10.8	11.4	17.0	6.4	6.6	0.0	0.0	0.0		86	34	1022	1018
24	20.8	22.1	4.5	9.9	12.7	16.0	7.7	5.3	0.0	1.9	2.6	light rain	90	33	1024	1022
25	21.9	22.1	7.8	10.1	14.9	16.1	9.9	3.1	0.0	0.0	0.0		93	30	1025	1022
26	26.5	22.8	7.7	10.3	17.1	16.6	12.1	0.9	0.0	0.0	0.0		72	32	1022	1002
27	24.3	23.5	13.3	10.5	18.8	17.0	13.8	0.0	0.8	0.0	0.0		64	26	1005	996
28	24.0	24.4	10.0	11.2	17.0	17.8	12.0	1.0	0.0	2.4	2.8	light rain	91	38	1008	1004
29	18.7	23.8	8.5	11.5	13.6	17.7	8.6	4.4	0.0	0.7	1.2	light rain	94	40	1016	1008
30	21.1	24.1	9.5	11.6	15.3	17.9	10.3	2.7	0.0	2.0	3.0	light rain	90	56	1016	1011
Total							349.0	65.9	24.9	25.4	33.8		Extreme / Date	Extreme / Date	Extreme / Date	Extreme / Date
Avg	22.9	22.5	10.3	9.8	16.6	16.2	1981-2010 Normal			66.6	Normal					
Extreme	33.7		4.5				334.8	81.4	24.8	123.5	Cumulative		95	16	1025	994
Date	1		24							167.5	Cumulative Normal		16	3	25	10

Note: Red numbers indicate manual calculation; Red cell indicate data not available

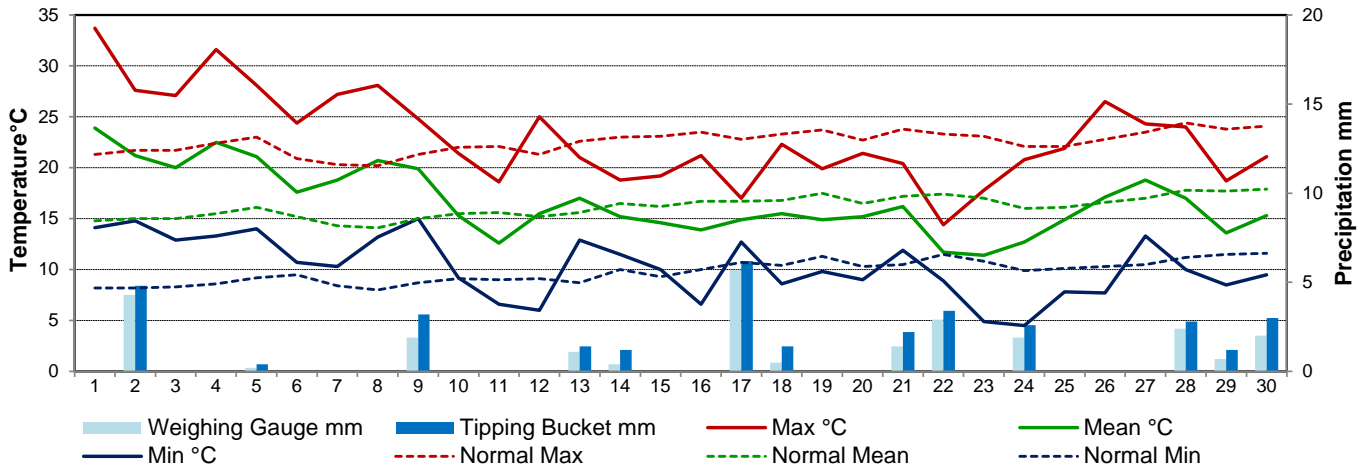
SRC proudly recognizes the following CRS supporters:



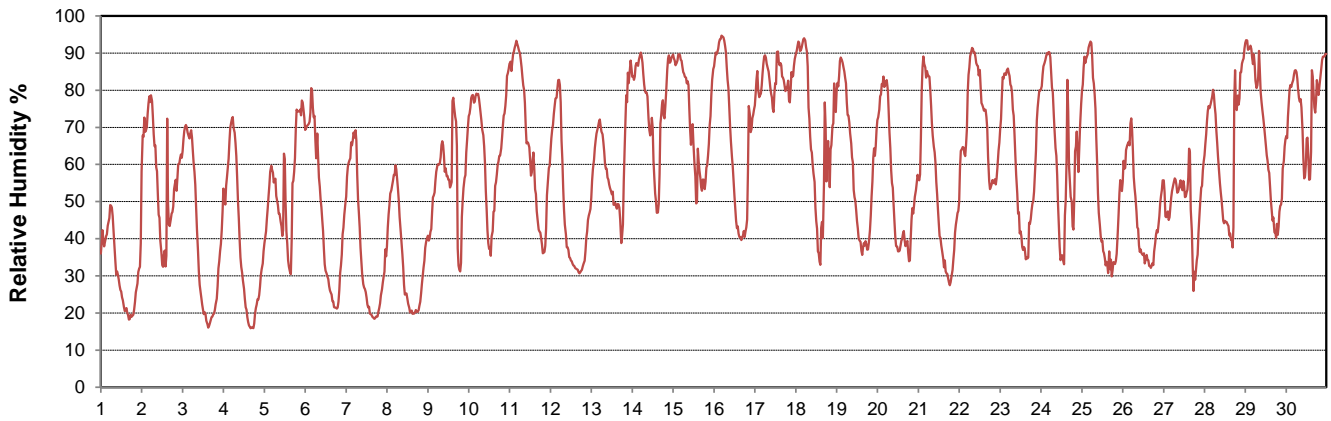
Agriculture and Agri-Food Canada / Agriculture et Agroalimentaire Canada



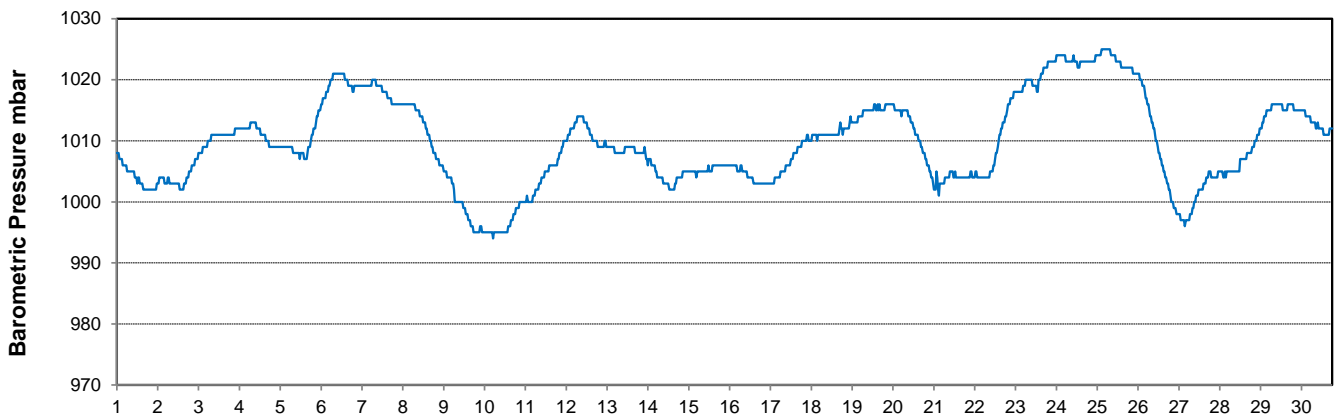
Temperature and Precipitation for June 2017



Relative Humidity for June 2017



Barometric Pressure Corrected to Sea Level for June 2017





SRC CLIMATE REFERENCE STATION DAILY DATA REPORT

SASKATOON STATION 4057180

Saskatchewan 52°09' N 106°36' W 497 m asl Estab. 1963

Preliminary **JUNE 2017**

Day	Wind Gust			Soil Temperatures at 0900hrs								Soil Moisture 30 cm	Radiation				
	Max	Direction	Time	Surface	5 cm	10 cm	20 cm	50 cm	100 cm	150 cm	300 cm		0900hrs	Bright Sunshine	Possible	% Possible	Global
	km/h			°C	°C	°C	°C	°C	°C	°C	°C	%	hours	hours		MJ/m ²	MJ/m ²
1	48.5	S	12:36	22.5	15.5	16.0	15.0	12.5	8.5	7.0	5.0	21	12.7	16.4	77.3	25.8	5.9
2	60.2	WSW	14:57	21.5	17.5	18.0	16.5	13.0	8.5	7.0	5.0	21	12.5	16.5	75.9	25.2	6.9
3	60.2	NW	12:33	19.0	15.0	16.0	15.5	13.5	9.0	7.0	5.0	21	15.3	16.5	92.7	30.0	2.5
4	48.7	ESE	19:16	21.5	15.5	16.0	15.5	13.5	9.0	7.5	5.0	20	15.5	16.5	93.8	28.9	2.8
5	51.7	NW	16:17	22.5	17.5	18.0	17.0	14.0	9.5	7.5	5.5	19	9.2	16.6	55.6	20.7	8.4
6	46.9	NW	0:02	16.0	16.0	17.0	16.5	14.0	9.5	7.5	5.5	18	14.9	16.6	89.9	29.7	2.6
7	25.0	ESE	15:44	19.5	15.5	16.5	16.5	14.5	10.0	8.0	5.5	18	15.8	16.6	95.2	28.8	3.9
8	38.1	SSE	14:56	22.0	17.5	18.0	17.5	15.0	10.0	8.0	5.5	17	14.7	16.6	88.4	27.9	4.2
9	60.0	SW	19:49	19.0	18.5	19.0	18.5	15.0	10.0	8.5	5.5	16	6.6	16.7	39.6	16.5	7.0
10	44.7	WSW	11:26	15.5	15.5	16.5	17.0	15.0	10.5	8.5	6.0	16	10.6	16.7	63.6	24.1	7.0
11	38.4	NNW	20:03	10.5	14.5	16.0	16.0	15.0	10.5	8.5	6.0	15	5.8	16.7	34.8	15.8	8.4
12	35.1	SSW	8:31	16.0	13.0	14.0	15.0	14.5	10.5	9.0	6.0	15	16.1	16.7	96.4	29.6	2.7
13	43.5	SE	10:40	19.5	17.0	17.5	17.0	14.5	11.0	9.0	6.0	15	4.3	16.7	25.7	9.7	5.9
14	38.7	NE	16:04	13.0	15.0	16.0	16.0	14.5	11.0	9.0	6.0	15	0.1	16.7	0.6	7.8	5.8
15	38.1	NNW	14:23	12.5	14.0	14.5	14.5	14.0	11.0	9.0	6.0	14	3.4	16.7	20.3	13.0	8.5
16	31.9	WNW	20:13	14.0	12.5	13.0	14.0	13.5	11.0	9.0	6.5	14	6.3	16.7	37.6	18.7	10.9
17	30.1	NW	14:20	15.5	15.5	16.0	15.5	13.5	11.0	9.5	6.5	14	1.3	16.8	7.8	9.3	6.6
18	34.9	NNE	15:07	16.0	13.0	14.0	14.5	13.5	11.0	9.5	6.5	15	10.8	16.8	64.5	23.8	4.5
19	43.5	NW	10:36	15.5	14.5	15.0	15.5	14.0	11.0	9.5	6.5	15	12.2	16.8	72.8	25.7	5.4
20	37.3	SE	23:58	17.0	14.5	15.0	15.0	14.0	11.0	9.5	6.5	15	6.7	16.8	40.0	16.3	8.8
21	68.1	WNW	12:55	15.0	14.5	15.5	15.5	14.0	11.0	9.5	7.0	15	12.8	16.8	76.4	27.5	5.4
22	59.5	W	4:37	10.0	13.0	14.5	15.0	14.0	11.0	9.5	7.0	14	1.6	16.8	9.5	8.2	5.2
23	51.2	N	15:26	11.5	10.5	11.5	13.0	13.5	11.0	9.5	7.0	14	13.6	16.8	81.2	25.6	5.9
24	42.3	NNW	15:25	13.5	11.5	12.0	13.0	13.0	11.0	9.5	7.0	14	9.9	16.8	59.1	22.1	5.3
25	21.4	E	11:10	16.0	13.0	14.0	14.0	13.0	11.0	9.5	7.0	14	14.8	16.7	88.4	28.5	4.0
26	39.9	SE	18:30	17.5	14.5	15.0	15.5	13.5	11.0	9.5	7.0	14	13.5	16.7	80.7	23.1	10.6
27	58.0	NW	16:21	21.5	16.5	17.0	16.5	14.0	11.0	9.5	7.0	14	12.0	16.7	71.8	22.0	6.7
28	61.2	NW	17:36	17.0	15.0	16.0	16.0	14.0	11.0	10.0	7.5	14	10.8	16.7	64.6	23.1	5.3
29	36.4	NNE	5:57	9.0	15.0	16.5	16.5	14.5	11.0	10.0	7.5	14	6.7	16.7	40.1	17.4	8.3
30	31.8	W	15:05	15.0	14.0	15.0	15.5	14.5	11.5	10.0	7.5	14	3.1	16.7	18.6	12.9	7.8
Total													293.6	500.2	58.7	637.7	183.2
Mean				16.5	14.8	15.6	15.6	14.0	10.5	8.8	6.3	16	1981-2010 Normal for Radiation				
Extreme	68.1	WNW	12:55	1971- 2000 Normal for Soil Temperatures									258.2	500.1	51.6	625.7	227.9
Date	21			15.3	15.7	16.3	14.0	10.4	8.3	5.4		No. of Bright Sunshine days = 30					

Note: Red numbers indicate manual calculation; Red cell indicate data not available

SRC proudly recognizes the following CRS supporters:



Agriculture and Agri-Food Canada

Agriculture et Agroalimentaire Canada

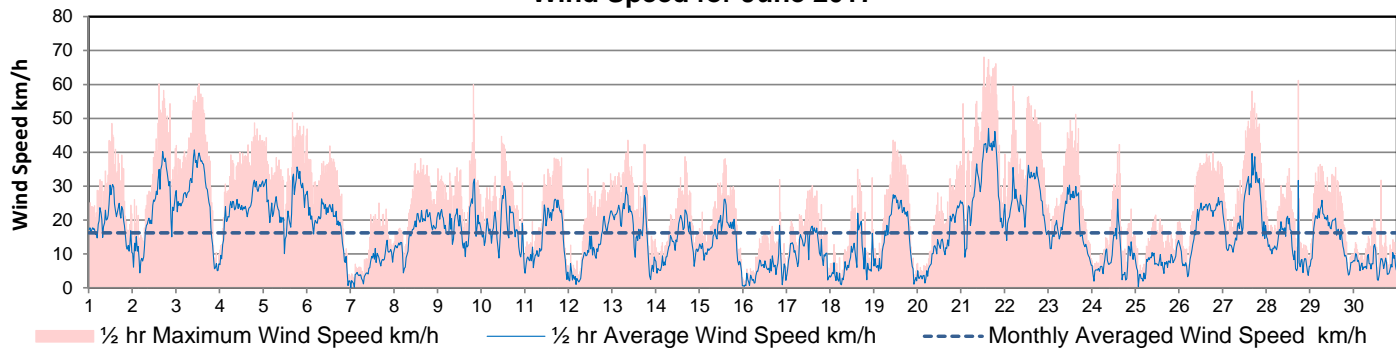


UNIVERSITY OF SASKATCHEWAN

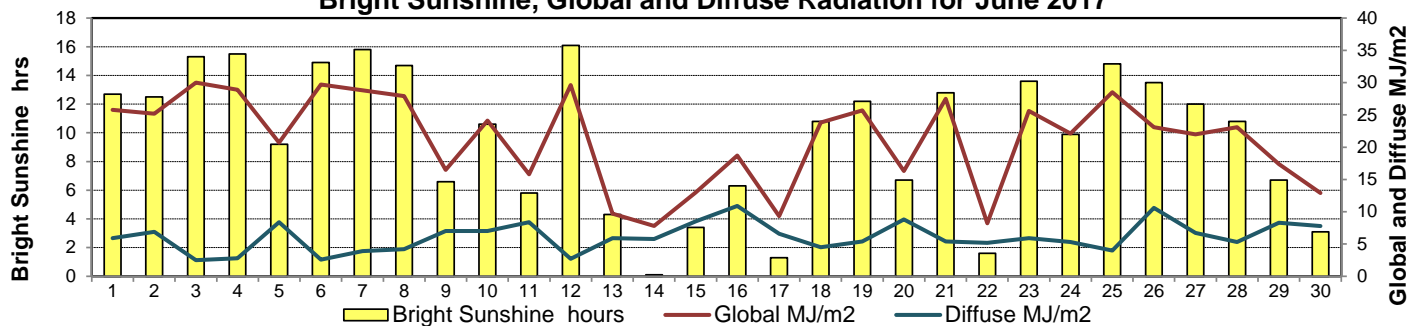


CAMPBELL SCIENTIFIC WHEN MEASUREMENTS MATTER

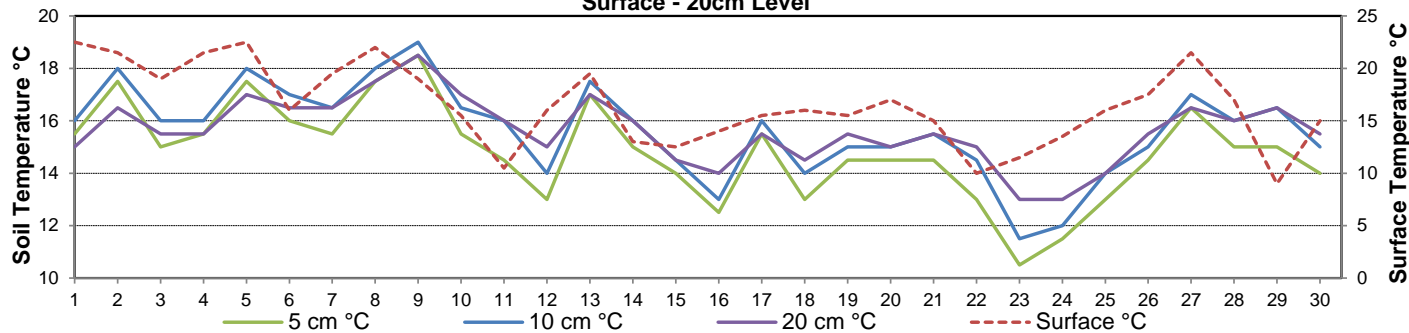
Wind Speed for June 2017



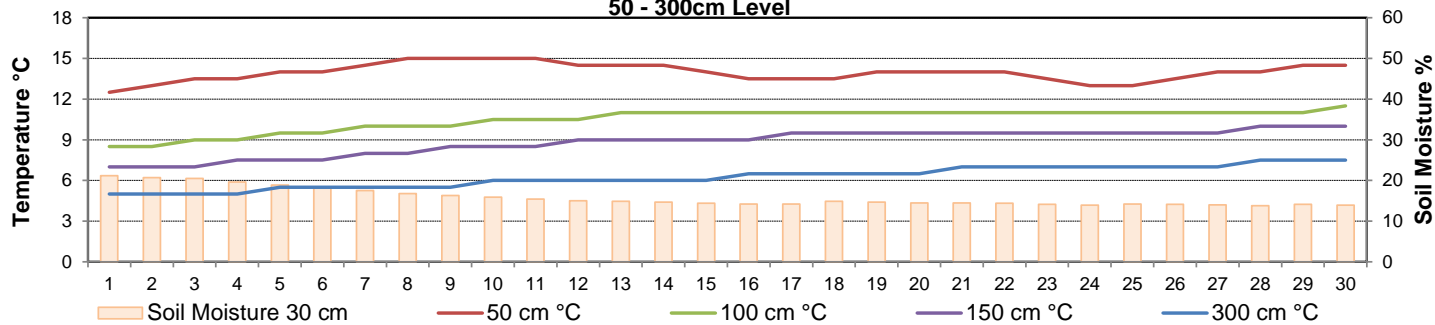
Bright Sunshine, Global and Diffuse Radiation for June 2017



Soil Temperatures for June 2017 Surface - 20cm Level



Soil Temperatures for June 2017 50 - 300cm Level





SRC CLIMATE REFERENCE STATION DAILY DATA REPORT



SASKATOON STATION 4057180

52°09' N 106°36' W 497 m asl Estab. 1963

Preliminary **JUNE** 2017

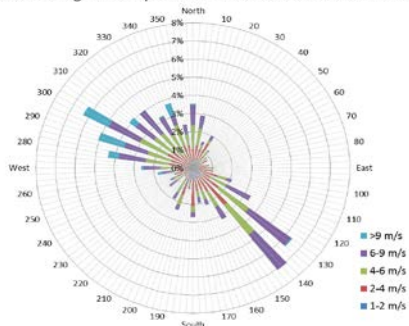
Extreme Records for June

Max/Min Temperature °C					Precipitation - Monthly mm					Wind Monthly km/h				CRS Bright Sunshine - Monthly			
S'toon Area	Date	Site	S'toon CRS	Date	S'toon Area	Date	Site	S'toon CRS	Date	S'toon Airport	Date	S'toon CRS**	Date	Hours	Year	No. of Days	Year
41.5	06/1988	S2	41.0	05/1988	186.8	1942	S	171.0	2005	117	01 ^S 1986	109.7 ^{SW}	22/2005	370.6	1978	30	1969*
-3.9	02/1917	US	-3.3	06/1967	5.0	2003	KCS	13.0	1985					175.3	2005	25	2002, 05

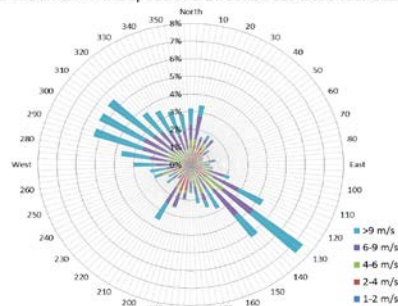
**1975 forward * more than one year

Notable Events for CRS Saskatoon - June						Saskatoon Area Stations			Glossary	
Element	Type	Day	New Record	Old Record	Year	SM	NWMP	c. 1892-1901	T	Trace of precipitation
Temperature	Highest Maximum Daily	1	33.7	29.5	1986	SE	Eby	1901-1941	Normal	30 year average beginning with the decade
	Highest Minimum Daily	2	14.8	14.5	1988	US	Univ. of Sask.	1915-1964	SOG	Depth of snow-on-the-ground in cm
	Highest Average Daily	1	23.9	21.8	1991	S	Saskatoon	1941-1942	na	not available
						SA	Saskatoon A	1942 -	Degree-days	
					NRC	Nat. Res. Council	1952-1966	Tm	Mean Temperature	
					SRC	Sask. Res. Council	1963-	Growing	(Tm-5°C); if Tm ≤ 5°C then GDD = 0	
					SWT	S'toon Water Treatment Plant	1974 -	Heating	(18°C-Tm); if Tm ≤ 18°C then HDD = 0	
					SC	S'toon Central Ave	1974-1989	Cooling	(Tm-18°C); if Tm ≥ 18°C then CDD = 0	
					S1	Saskatoon 1	1976-1978	Extreme Cooling	(Tm-24°C); if Tm ≥ 24°C then CDD = 0	
					S2	Saskatoon 2	1977-1990	<p>June 26 2017 data logger errors, bright sunshine daily total manually calculated</p>		
					K	S'toon Kernen Farm	1993-2004			
					KCS	S'toon Kernen Farm CS	1996-			
					RCS	Environment Canada	2008-			
					SF	Sutherland Forestry	1943-1970			

10 minute Average Wind Speed and Direction Saskatoon June 2017



1/2 hr Maximum Wind Speed and Direction Saskatoon June 2017



SRC proudly recognizes the following CRS supporters:



Agriculture and Agri-Food Canada / Agriculture et Agroalimentaire Canada

