



SRC CLIMATE REFERENCE STATION DAILY DATA REPORT

**SASKATOON STATION 4057180**



52°09' N 106°36' W 497 m asl Estab. 1963

Preliminary **JUNE 2014**

Day	Temperature						Degree-days			Precipitation			Relative Humidity		Station Pressure (sea level)	
	Max	Normal Max	Min	Normal Min	Mean	Normal Mean	Growing	Heating	Cooling	Weighing Gauge	Tipping Bucket	Notes	Max ½ hr Avg	Min ½ hr Avg	Max ½ hr Avg	Min ½ hr Avg
	°C	1981-2010	°C	1981-2010	°C	1981-2010	5°C base	18°C base	18°C base	mm	mm		%	%	mbar	mbar
1	18.6	21.3	10.6	8.2	14.6	14.8	9.6	3.4	0.0	0.0	0.0		83	50	1016	1012
2	22.6	21.7	6.6	8.2	14.6	15.0	9.6	3.4	0.0	0.2	0.0		96	31	1016	1010
3	25.5	21.7	9.5	8.3	17.5	15.0	12.5	0.5	0.0	0.0	0.0		93	27	1011	1007
4	22.1	22.4	10.4	8.6	16.3	15.5	11.3	1.7	0.0	0.0	0.6		89	52	1008	1005
5	13.5	23.0	5.4	9.2	9.5	16.1	4.5	8.5	0.0	1.4	1.6		95	56	1015	1005
6	14.7	20.9	5.1	9.5	9.9	15.2	4.9	8.1	0.0	0.0	0.0		89	29	1017	1015
7	19.5	20.3	4.3	8.4	11.9	14.3	6.9	6.1	0.0	0.8	1.0		94	28	1017	1013
8	16.9	20.2	3.6	8.0	10.3	14.1	5.3	7.7	0.0	3.2	3.4		98	40	1017	1014
9	19.2	21.3	6.9	8.7	13.1	15.0	8.1	4.9	0.0	3.5	4.4		86	40	1014	1002
10	17.9	22.0	6.6	9.1	12.3	15.5	7.3	5.7	0.0	0.0	0.0		91	52	1013	1004
11	20.3	22.1	3.8	9.0	12.1	15.6	7.1	5.9	0.0	0.0	0.0		97	26	1017	1013
12	23.2	21.3	6.8	9.1	15.0	15.2	10.0	3.0	0.0	0.0	0.0		83	23	1017	1012
13	21.7	22.6	10.7	8.7	16.2	15.6	11.2	1.8	0.0	0.0	0.2		88	29	1012	1007
14	14.3	23.0	9.0	10.0	11.7	16.5	6.7	6.3	0.0	8.0	9.4		92	68	1010	1008
15	12.1	23.1	9.7	9.3	10.9	16.2	5.9	7.1	0.0	9.7	10.8		95	86	1008	1003
16	17.9	23.5	9.7	10.0	13.8	16.7	8.8	4.2	0.0	2.1	0.8		96	56	1009	1002
17	20.6	22.8	6.9	10.7	13.8	16.7	8.8	4.2	0.0	0.0	0.6		96	53	1013	1002
18	17.1	23.3	12.3	10.4	14.7	16.8	9.7	3.3	0.0	22.6	26.8		94	80	1012	1005
19	21.4	23.7	12.9	11.3	17.2	17.5	12.2	0.8	0.0	2.6	0.2		94	61	1005	997
20	17.4	22.7	12.8	10.3	15.1	16.5	10.1	2.9	0.0	14.3	17.8		95	87	1002	996
21	19.4	23.8	14.1	10.5	16.8	17.2	11.8	1.2	0.0	8.5	12.2		96	76	1000	992
22	19.4	23.3	13.7	11.5	16.6	17.4	11.6	1.4	0.0	10.1	11.4		95	80	1005	998
23	22.1	23.1	12.9	10.8	17.5	17.0	12.5	0.5	0.0	5.1	0.2		95	58	1012	na
24	21.5	22.1	13.3	9.9	17.4	16.0	12.4	0.6	0.0	0.0	0.0		92	53	1013	1006
25	22.7	22.1	12.9	10.1	17.8	16.1	12.8	0.2	0.0	0.0	0.4		88	51	1012	1005
26	22.9	22.8	13.5	10.3	18.2	16.6	13.2	0.0	0.2	0.2	0.2		95	56	1005	1000
27	25.6	23.5	14.4	10.5	20.0	17.0	15.0	0.0	2.0	0.0	0.0		91	40	1003	1000
28	27.1	24.4	14.1	11.2	20.6	17.8	15.6	0.0	2.6	0.0	0.0		85	40	1001	997
29	25.1	23.8	15.7	11.5	20.4	17.7	15.4	0.0	2.4	0.0	1.6		87	53	997	994
30	18.8	24.1	14.6	11.6	16.7	17.9	11.7	1.3	0.0	9.0	9.2		91	70	1011	997
Total							302.5	94.7	7.2	101.3	112.8		Extreme / Date	Extreme / Date	Extreme / Date	Extreme / Date
Avg	20.0	22.5	10.1	9.8	15.1	16.2	1981-2010 Normal			66.6	Normal					
Extreme Date	27.1		3.6				334.8	81.4	24.8	292.2	Cumulative		98	23	1017	992
	28		8							167.5	Cumulative Normal		8	12	6	21

Note: Red numbers indicate manual calculation; Red cell indicate data not available

**SRC proudly recognizes the following CRS supporters:**

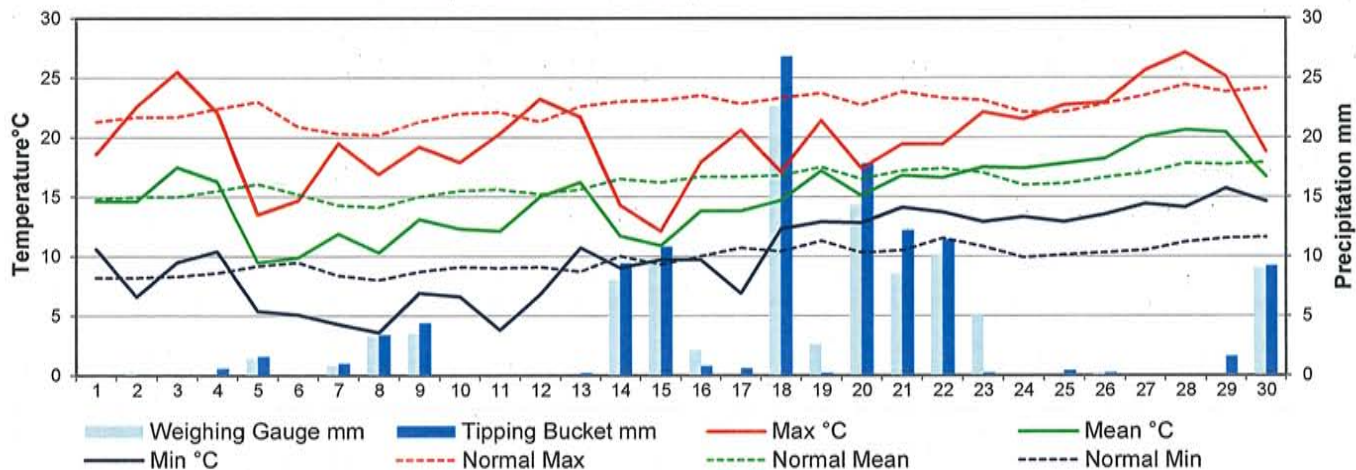


Agriculture and Agri-Food Canada

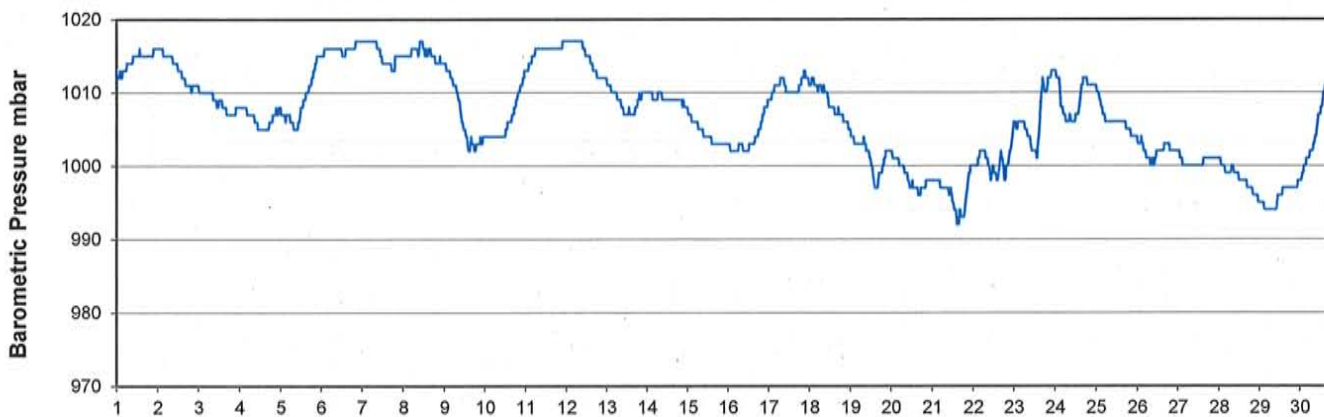
Agriculture et Agroalimentaire Canada



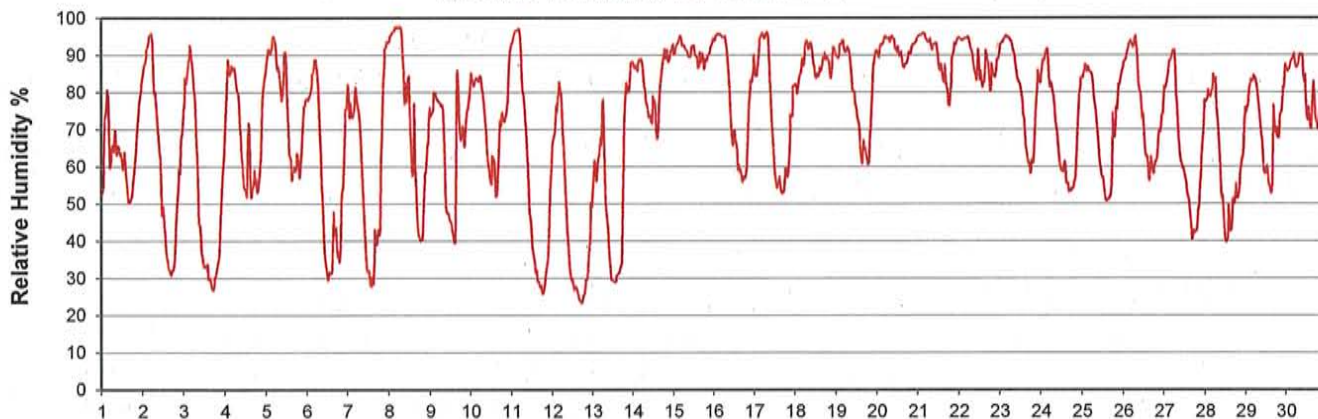
**Temperature and Precipitation for June 2014**



**Barometric Pressure Corrected to Sea Level for June 2014**



**Relative Humidity for June 2014**







SRC CLIMATE REFERENCE STATION DAILY DATA REPORT



**SASKATOON STATION 4057180**

52°09' N 106°36' W 497 m asl Estab. 1963

Preliminary **JUNE 2014**

Day	Wind Gust			Soil Temperatures at 0900hrs								Soil Moisture 30 cm	Radiation				
	Max	Direction	Time	Surface	5 cm	10 cm	20 cm	50 cm	100 cm	150 cm	300 cm		0900hrs	Bright Sunshine	Possible	% Possible	Global
	km/h			°C	°C	°C	°C	°C	°C	°C	°C	%	hours	hours		MJ/m <sup>2</sup>	MJ/m <sup>2</sup>
1	36.9	ESE	16:17	10.5	15.0	16.0	14.5	12.0	8.5	6.5	4.5	31.5	9.2	16.4	56.0	19.4	9.1
2	24.8	WSW	17:50	12.0	14.0	14.5	14.0	12.5	9.0	7.0	5.0	30.7	14.6	16.5	88.6	27.2	3.2
3	33.3	SSE	18:07	15.0	16.5	16.5	15.0	13.0	9.0	7.0	5.0	30.2	12.9	16.5	78.2	24.0	7.2
4	50.4	NW	16:17	14.0	17.5	18.0	16.0	13.5	9.5	7.0	5.0	29.5	9.5	16.5	57.5	19.6	7.8
5	59.5	WNW	15:40	10.5	16.0	16.5	15.5	14.0	9.5	7.5	5.0	28.7	4.7	16.6	28.4	12.5	7.9
6	45.6	W	12:44	7.0	12.5	13.0	13.0	13.0	10.0	8.0	5.5	28.0	9.5	16.6	57.3	20.2	7.5
7	65.1	W	19:28	8.0	12.5	13.0	12.5	12.5	10.0	8.0	5.5	27.4	6.6	16.6	39.8	16.9	9.0
8	44.3	NNW	14:51	8.0	12.0	12.5	12.5	12.5	10.0	8.0	5.5	27.1	10.4	16.6	62.5	19.0	5.2
9	52.4	SE	14:19	11.0	13.0	13.5	13.0	12.5	10.0	8.0	5.5	27.3	3.8	16.7	22.8	11.2	7.1
10	55.3	WNW	15:04	8.5	13.0	13.5	12.5	12.0	10.0	8.5	5.5	27.6	4.9	16.7	29.4	16.4	8.3
11	28.9	WNW	15:15	9.0	11.5	12.5	12.0	12.0	10.0	8.5	6.0	27.1	14.2	16.7	85.1	25.5	5.4
12	29.9	WSW	13:18	14.0	13.0	13.5	13.5	12.5	10.0	8.5	6.0	26.5	13.0	16.7	77.8	24.2	5.7
13	47.0	ESE	11:01	14.0	15.5	16.0	14.5	13.0	10.0	8.5	6.0	25.8	5.2	16.7	31.1	14.2	9.6
14	34.0	NE	11:23	9.5	14.0	14.5	14.0	13.0	10.0	8.5	6.0	25.2	0.0	16.7	0.0	6.2	5.1
15	39.2	NE	14:02	8.5	13.0	13.5	13.0	12.5	10.0	8.5	6.0	28.6	0.0	16.7	0.0	4.6	3.8
16	19.1	ESE	21:04	8.5	13.0	13.5	12.5	12.5	10.0	8.5	6.0	28.9	6.1	16.7	36.4	15.0	10.6
17	36.4	ESE	16:06	10.0	14.0	14.5	13.5	12.5	10.0	8.5	6.0	28.5	7.0	16.8	41.8	16.4	10.7
18	38.1	E	23:37	9.0	15.0	16.0	14.5	13.0	10.0	9.0	6.5	32.5	0.0	16.8	0.0	4.8	3.9
19	40.1	ESE	0:24	9.5	15.5	16.5	14.0	13.5	10.5	9.0	6.5	35.8	6.5	16.8	38.8	15.9	7.1
20	35.3	WNW	15:37	10.5	16.0	17.0	15.0	13.5	10.5	9.0	6.5	37.6	0.1	16.8	0.6	6.8	5.6
21	39.3	WNW	20:07	8.5	16.5	17.5	15.0	14.0	10.5	9.0	6.5	36.3	2.3	16.8	13.7	9.3	6.8
22	36.6	WNW	12:48	9.5	17.0	18.0	15.5	14.0	11.0	9.0	6.5	37.0	3.2	16.8	19.1	9.7	6.8
23	30.7	NE	12:51	11.0	16.5	17.5	15.5	14.5	11.0	9.5	6.5	37.0	6.7	16.8	40.0	17.3	8.0
24	32.5	ESE	13:17	12.5	17.5	18.5	16.5	14.5	11.0	9.5	6.5	35.3	12.2	16.8	72.8	25.0	5.6
25	39.3	SE	12:12	15.5	17.5	18.5	17.0	14.5	11.5	9.5	7.0	33.8	10.2	16.7	60.9	21.3	7.2
26	25.5	SE	0:03	11.0	18.0	19.0	17.0	15.0	11.5	10.0	7.0	32.7	5.8	16.7	34.7	14.7	9.1
27	24.9	NW	19:37	14.0	19.0	20.0	17.5	15.0	11.5	10.0	7.0	32.0	13.3	16.7	79.5	21.8	8.6
28	31.7	WNW	23:40	17.0	19.0	20.0	18.0	15.5	12.0	10.0	7.0	30.8	10.2	16.7	61.0	20.4	8.7
29	47.5	NW	10:53	14.5	20.0	21.0	18.5	16.0	12.0	10.5	7.0	29.7	6.7	16.7	40.1	17.0	10.2
30	61.3	NNW	16:18	11.0	18.5	20.0	18.0	16.0	12.0	10.5	7.0	30.9	0.1	16.7	0.6	7.6	6.2
Total													208.9	500.2	41.8	484.1	217.0
Mean				11.1	15.4	16.2	14.8	13.5	10.4	8.7	6.1	30.7	1981-2010 Normal for Radiation				
Extreme	65.1	W	19:28	1971- 2000 Normal for Soil Temperatures									258.2	500.1	51.6	625.7	227.9
Date	7			15.3	15.7	16.3	14.0	10.4	8.3	5.4		No. of Bright Sunshine days = 27					

Note: Red numbers indicate manual calculation

**SRC proudly recognizes the following CRS supporters:**

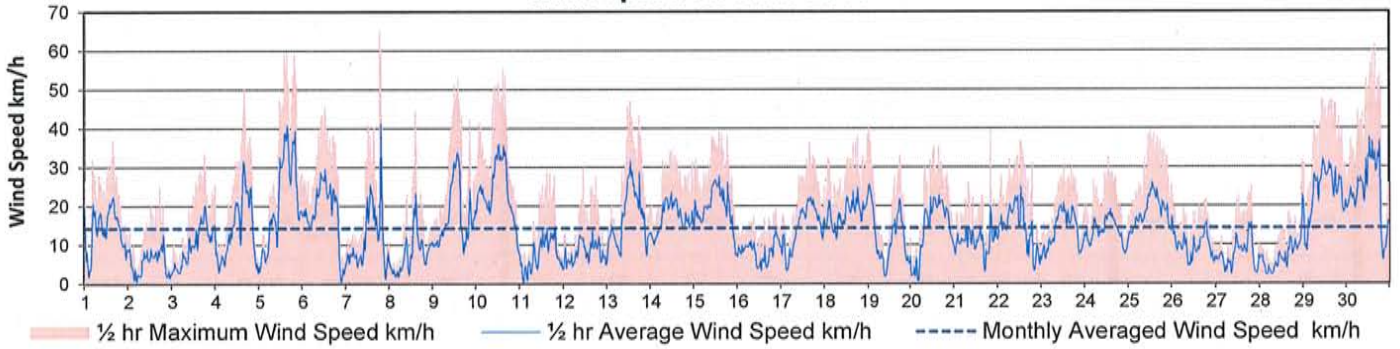


Agriculture and Agri-Food Canada

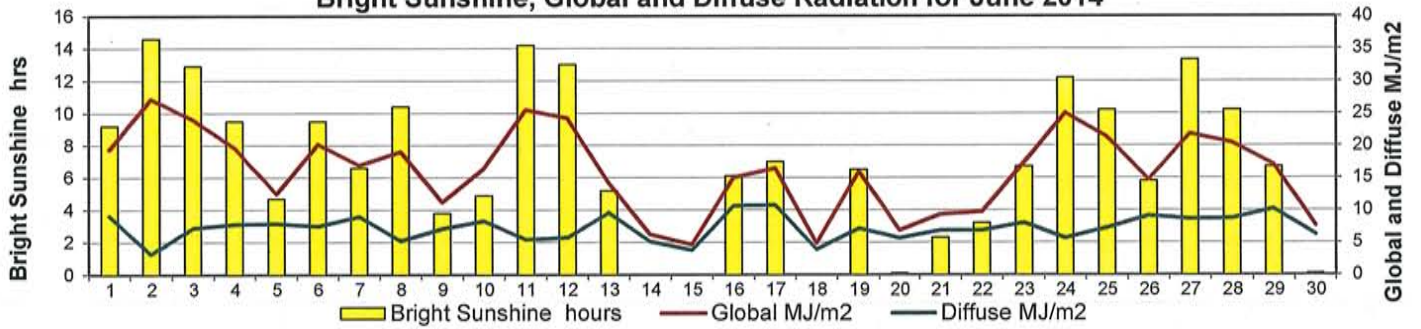
Agriculture et Agroalimentaire Canada



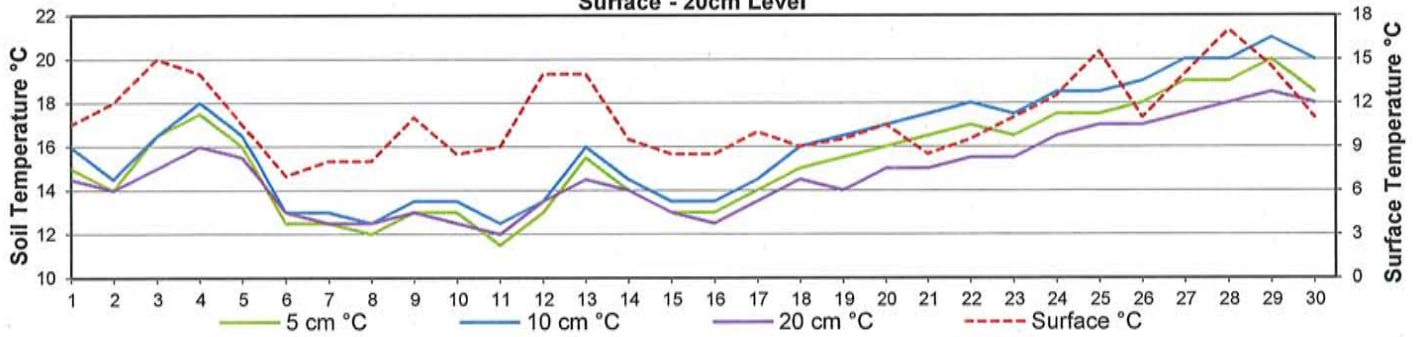
**Wind Speed for June 2014**



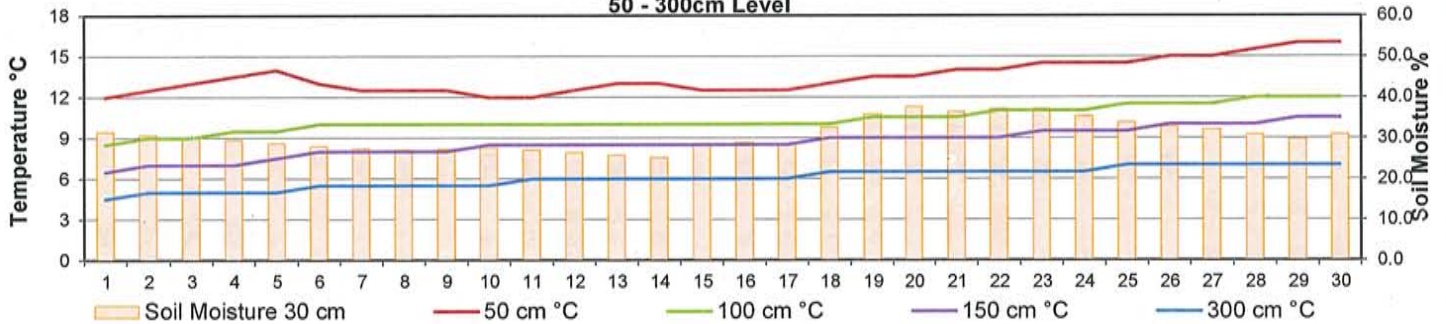
**Bright Sunshine, Global and Diffuse Radiation for June 2014**



**Soil Temperatures for June 2014  
Surface - 20cm Level**



**Soil Temperatures for June 2014  
50 - 300cm Level**







# SRC CLIMATE REFERENCE STATION DAILY DATA REPORT

## SASKATOON STATION 4057180

52°09' N 106°36' W 497 m asl Estab. 1963

Preliminary JUNE 2014



### Extreme Records for June

Max/Min Temperature °C				Precipitation - Monthly mm					Wind Monthly km/h				CRS Bright Sunshine - Monthly			
S'toon Area	Date	Site	S'toon CRS Date	S'toon Area	Date	Site	S'toon CRS Date	S'toon Airport	Date	S'toon CRS**	Date	Hours	Year	No. of Days	Year	
41.5	06/1988	S2	41.0 05/1988	186.8	1942	S	171.0 2005	117	01 <sup>S</sup> 1986	109.7 <sup>SW</sup>	22/2005	370.6	1978	30	1969*	
-3.9	02/1917	US	-3.3 06/1967	5.0	2003	KCS	13.0 1985					175.3	2005	25	2002, 05	

\*\*1975 forward \* more than one year

Notable Events for CRS Saskatoon - June						Saskatoon Area Stations			Glossary		
Element	Type	Day	New Record	Old Record	Year	SM	NWMP	c.	1892-1901	T	Trace of precipitation
Precipitation	Daily Max	15	10.8 mm	10.0mm	2013	SE	Eby		1901-1941	Normal	30 year average beginning with the decade
		20	17.8 mm	17.6mm	2006	US	Univ. of Sask.		1915-1964	SOG	Depth of snow-on-the-ground in cm
Temperature	Lowest Extreme Monthly Max	28	27.1°C	27.1°C	18/2013	S	Saskatoon		1941-1942	na	not available
						SA	Saskatoon A		1942 -	Degree-days	
						NRC	Nat. Res. Council		1952-1966	Tm	Mean Temperature
						SRC	Sask. Res. Council		1963-	Growing	(Tm-5°C); if Tm ≤ 5°C then GDD = 0
						SWT	S'toon Water Treatment Plant		1974 -	Heating	(18°C-Tm); if Tm ≤ 18°C then HDD = 0
						SC	S'toon Central Ave		1974-1989	Cooling	(Tm-18°C); if Tm ≥ 18°C then CDD = 0
						S1	Saskatoon 1		1976-1978	Extreme Cooling	(Tm-24°C); if Tm ≥ 24°C then CDD = 0
						S2	Saskatoon 2		1977-1990		
						K	S'toon Kernan Farm		1993-2004		
						KCS	S'toon Kernan Farm CS		1996-		
						RCS	Environment Canada		2008-		
						SF	Sutherland Forestry		1943-1970		



**Did you Know?**  
 "Water, water, everywhere, Nor any drop to drink." from *"The Rime of the Ancient Mariner"* is very true as only 1% of the Earth's water is available for drinking. The Great Lakes contain about 18% of the world's fresh water while Saskatchewan contains about 1.5% of the world's or 7% of Canada's fresh water. The total area of fresh water in Saskatchewan is 59,366 km<sup>2</sup> although this month many people in SE Saskatchewan would put that area at a higher number. An average person uses 230 litres a day directly and indirectly. A dripping tap can waste over 100 litres a day while a barrel of beer takes 6800 litres of water to make.\*



### Summary

It has been a slow start to the growing season with June average temperatures below normal for the 5<sup>th</sup> consecutive month. Growing degree-days are 90% of normal while heating degree-days are 16% above normal. Maximum temperatures failed to reach 30°C at any time during the month. Rain, at 69% above normal, garnered all the attention with over 70% occurring between the 15<sup>th</sup> and 22<sup>nd</sup> causing flood conditions in some areas. Rain totals varied greatly, even over small distances. Extreme wind speeds over 50km/h happened on six occasions with the highest, Gale force at 65 km/h, on the last day of the month. Bright sunshine, absent for three days, was 81% of normal. Only two days were over 80% of the possible sunshine hours.

\*Sources  
<http://www.saskatoon.ca/DEPARTMENTS/Utility%20Services/Water%20and%20Wastewater%20Treatment/Pages/Water%20Facts.aspx>  
<http://www.statcan.gc.ca/pub/16-201-x/2010000/part-partie2-eng.htm>  
[http://en.wikipedia.org/wiki/Geography\\_of\\_Saskatchewan](http://en.wikipedia.org/wiki/Geography_of_Saskatchewan)

### SRC proudly recognizes the following CRS supporters:



Agriculture and Agri-Food Canada

Agriculture et Agroalimentaire Canada

