



# SRC CLIMATE REFERENCE STATION DAILY DATA REPORT



**SASKATOON STATION 4057180**

Saskatchewan 52°09' N 106°36' W 497 m asl Estab. 1963

Preliminary **JUNE 2015**

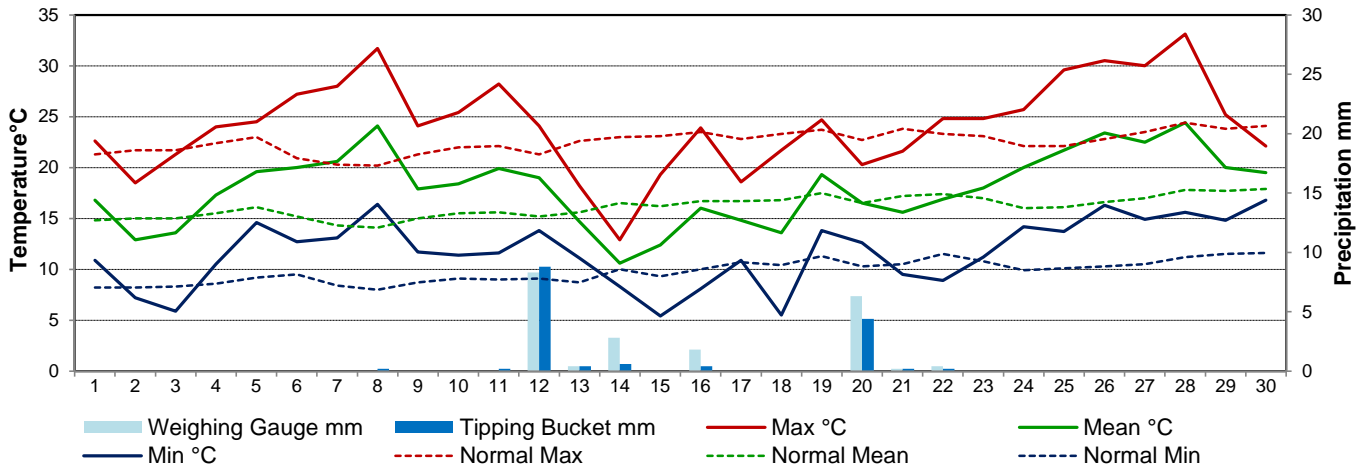
Day	Temperature						Degree-days			Precipitation			Relative Humidity		Station Pressure (sea level)	
	Max	Normal Max	Min	Normal Min	Mean	Normal Mean	Growing	Heating	Cooling	Weighing Gauge	Tipping Bucket	Notes	Max ½ hr Avg	Min ½ hr Avg	Max ½ hr Avg	Min ½ hr Avg
	°C	1981-2010	°C	1981-2010	°C	1981-2010	5°C base	18°C base	18°C base	mm	mm		%	%	mbar	mbar
1	22.6	21.3	10.9	8.2	16.8	14.8	11.8	1.2	0.0	0.0	0.0		90	35	1014	1006
2	18.5	21.7	7.2	8.2	12.9	15.0	7.9	5.1	0.0	0.0	0.0		85	21	1017	1014
3	21.3	21.7	5.9	8.3	13.6	15.0	8.6	4.4	0.0	0.0	0.0		82	20	1017	1015
4	24.0	22.4	10.5	8.6	17.3	15.5	12.3	0.7	0.0	0.0	0.0		68	16	1019	1017
5	24.5	23.0	14.6	9.2	19.6	16.1	14.6	0.0	1.6	0.0	0.0		71	32	1019	1012
6	27.2	20.9	12.7	9.5	20.0	15.2	15.0	0.0	2.0	0.0	0.0		83	23	1012	1006
7	28.0	20.3	13.1	8.4	20.6	14.3	15.6	0.0	2.6	0.0	0.0		62	22	1010	1008
8	31.7	20.2	16.4	8.0	24.1	14.1	19.1	0.0	6.1	0.0	0.2		62	22	1009	1003
9	24.1	21.3	11.7	8.7	17.9	15.0	12.9	0.1	0.0	0.0	0.0		76	29	1012	1008
10	25.4	22.0	11.4	9.1	18.4	15.5	13.4	0.0	0.4	0.0	0.0		71	26	1013	1010
11	28.2	22.1	11.6	9.0	19.9	15.6	14.9	0.0	1.9	0.0	0.2		72	24	1012	1000
12	24.1	21.3	13.8	9.1	19.0	15.2	14.0	0.0	1.0	8.3	8.8		93	31	1005	999
13	18.2	22.6	11.1	8.7	14.7	15.6	9.7	3.3	0.0	0.4	0.4		90	44	1011	1004
14	12.9	23.0	8.3	10.0	10.6	16.5	5.6	7.4	0.0	2.8	0.6		89	64	1021	1011
15	19.3	23.1	5.4	9.3	12.4	16.2	7.4	5.6	0.0	0.0	0.0		94	33	1024	1019
16	23.9	23.5	8.1	10.0	16.0	16.7	11.0	2.0	0.0	1.8	0.4		81	24	1019	1011
17	18.6	22.8	10.9	10.7	14.8	16.7	9.8	3.2	0.0	0.0	0.0		90	24	1020	1011
18	21.7	23.3	5.5	10.4	13.6	16.8	8.6	4.4	0.0	0.0	0.0		85	28	1020	1012
19	24.7	23.7	13.8	11.3	19.3	17.5	14.3	0.0	1.3	0.0	0.0		82	43	1012	1007
20	20.3	22.7	12.6	10.3	16.5	16.5	11.5	1.5	0.0	6.3	4.4		93	55	1011	1008
21	21.6	23.8	9.5	10.5	15.6	17.2	10.6	2.4	0.0	0.2	0.2		91	39	1011	1008
22	24.8	23.3	8.9	11.5	16.9	17.4	11.9	1.1	0.0	0.4	0.2		90	30	1014	1010
23	24.8	23.1	11.2	10.8	18.0	17.0	13.0	0.0	0.0	0.0	0.0		85	34	1016	1014
24	25.7	22.1	14.2	9.9	20.0	16.0	15.0	0.0	2.0	0.0	0.0		76	38	1017	1014
25	29.6	22.1	13.7	10.1	21.7	16.1	16.7	0.0	3.7	0.0	0.0		86	29	1017	1016
26	30.5	22.8	16.3	10.3	23.4	16.6	18.4	0.0	5.4	0.0	0.0		75	29	1016	1013
27	30.0	23.5	14.9	10.5	22.5	17.0	17.5	0.0	4.5	0.0	0.0		79	23	1016	1014
28	33.1	24.4	15.6	11.2	24.4	17.8	19.4	0.0	6.4	0.0	0.0		76	23	1016	1013
29	25.2	23.8	14.8	11.5	20.0	17.7	15.0	0.0	2.0	0.0	0.0		84	41	1018	1014
30	22.1	24.1	16.8	11.6	19.5	17.9	14.5	0.0	1.5	0.0	0.0		89	55	1015	1012
Total							390.0	42.4	42.4	20.2	15.4		Extreme / Date	Extreme / Date	Extreme / Date	Extreme / Date
Avg	24.2	22.5	11.7	9.8	18.0	16.2	1981-2010 Normal			66.6	Normal					
Extreme	33.1		5.4				334.8	81.4	24.8	96.5	Cumulative		94	16	1024	999
Date	28		15							167.5	Cumulative Normal		15	4	15	12

Note: Red numbers indicate manual calculation; Red cell indicate data not available

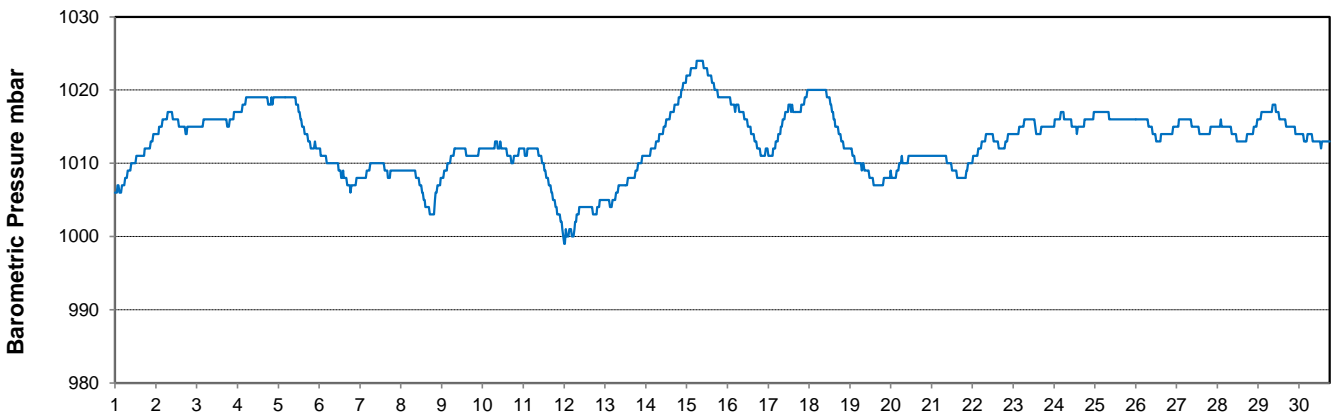
**SRC proudly recognizes the following CRS supporters:**



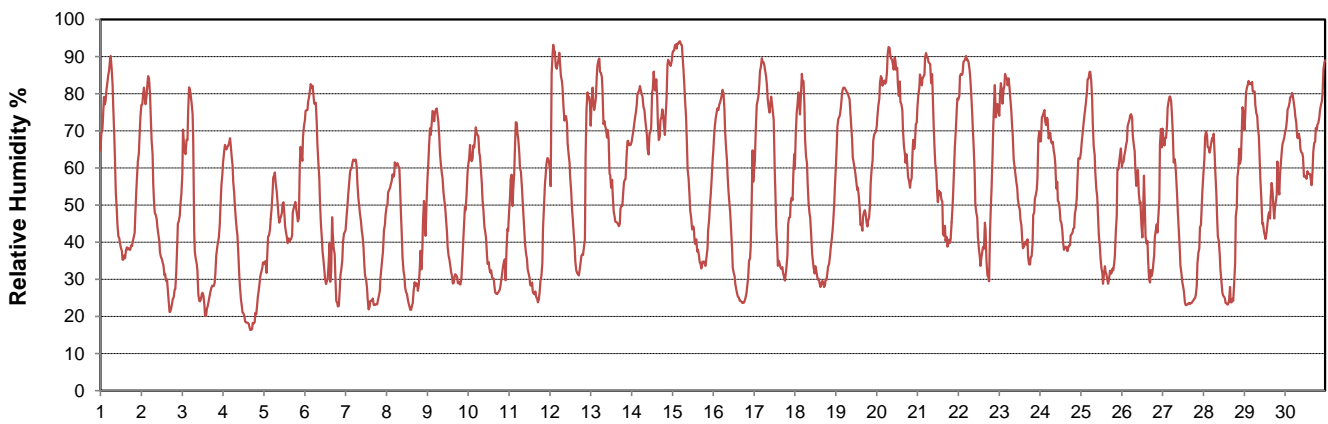
### Temperature and Precipitation for June 2015



### Barometric Pressure Corrected to Sea Level for June 2015



### Relative Humidity for June 2015





SRC CLIMATE REFERENCE STATION DAILY DATA REPORT



**SASKATOON STATION 4057180**

Saskatchewan 52°09' N 106°36' W 497 m asl Estab. 1963

Preliminary **JUNE 2015**

Day	Wind Gust			Soil Temperatures at 0900hrs								Soil Moisture 30 cm	Radiation				
	Max	Direction	Time	Surface	5 cm	10 cm	20 cm	50 cm	100 cm	150 cm	300 cm		0900hrs	Bright Sunshine	Possible	% Possible	Global
	km/h			°C	°C	°C	°C	°C	°C	°C	°C	%	hours	hours		MJ/m <sup>2</sup>	MJ/m <sup>2</sup>
1	44.8	NW	15:41	17.5	15.5	15.5	15.0	13.0	9.5	8.0	6.0	18.0	15.2	16.4	92.5	29.3	3.7
2	40.3	ENE	7:44	13.5	15.0	15.5	16.0	13.5	9.5	8.0	6.0	17.6	12.9	16.5	78.4	27.6	8.4
3	38.9	SSW	15:37	16.0	14.5	15.0	15.5	13.5	9.5	8.0	6.0	17.1	11.6	16.5	70.3	23.3	10.4
4	41.3	ESE	16:08	18.5	15.0	15.5	15.5	13.5	10.0	8.5	6.0	16.8	14.2	16.5	86.0	25.6	8.4
5	40.6	SSW	11:27	20.0	16.5	17.0	16.5	13.5	10.0	8.5	6.0	16.5	10.9	16.5	65.9	22.9	6.9
6	56.0	WNW	13:53	20.5	17.0	17.0	17.0	14.0	10.0	8.5	6.0	16.3	13.0	16.6	78.5	23.1	5.2
7	48.3	WNW	14:15	20.5	16.5	17.0	17.0	14.5	10.5	8.5	6.5	16.0	14.2	16.6	85.6	26.6	6.4
8	60.6	N	20:42	22.5	18.0	18.5	18.0	14.5	10.5	9.0	6.5	15.7	9.4	16.6	56.6	23.3	4.6
9	47.5	WNW	13:20	18.5	18.0	18.5	18.5	15.0	10.5	9.0	6.5	15.5	12.6	16.6	75.7	23.3	6.8
10	29.6	NNE	13:55	20.0	17.0	17.5	18.0	15.0	11.0	9.0	6.5	15.1	12.5	16.7	75.0	28.1	4.4
11	41.0	SSW	16:47	21.5	18.5	19.0	19.0	15.5	11.0	9.5	6.5	14.9	10.2	16.7	61.2	23.0	9.2
12	66.9	WSW	14:11	16.5	18.5	19.0	19.0	15.5	11.0	9.5	6.5	16.6	10.7	16.7	64.1	24.9	6.3
13	49.8	WNW	1:05	14.5	17.0	17.5	18.0	16.0	11.5	9.5	6.5	15.9	8.6	16.7	51.5	20.0	9.0
14	34.8	NE	20:54	11.0	15.0	16.0	16.5	15.5	11.5	9.5	7.0	15.4	1.1	16.7	6.6	12.6	9.3
15	29.1	WSW	17:01	14.0	12.0	13.0	14.5	14.5	11.5	10.0	7.0	15.0	12.5	16.7	74.7	24.4	6.5
16	36.6	SSW	15:24	16.0	14.0	14.5	15.0	14.0	11.5	10.0	7.0	14.9	12.7	16.7	75.9	28.2	5.2
17	38.7	NNE	8:00	12.0	16.0	17.0	16.5	14.5	11.5	10.0	7.0	14.8	7.2	16.7	43.0	20.4	5.8
18	40.1	SSE	15:48	16.5	15.0	15.5	16.0	14.5	11.5	10.0	7.0	14.6	12.3	16.8	73.4	26.2	7.7
19	24.8	E	22:02	16.5	17.5	17.5	17.0	14.5	11.5	10.0	7.5	14.6	7.7	16.8	46.0	21.7	7.5
20	43.1	WNW	5:14	14.0	18.0	18.5	18.0	15.0	11.5	10.0	7.5	15.0	5.8	16.8	34.6	13.8	6.7
21	31.2	WNW	19:48	13.5	15.0	15.5	16.5	15.0	11.5	10.0	7.5	14.8	8.7	16.8	51.9	20.7	6.8
22	49.0	NW	18:27	17.0	15.0	15.5	16.5	15.0	11.5	10.5	7.5	14.6	12.9	16.8	77.0	26.2	5.5
23	20.5	NNW	11:28	18.0	16.5	17.0	17.0	15.0	11.5	10.5	7.5	14.5	14.6	16.8	87.2	26.7	5.0
24	31.8	SW	13:53	19.0	18.5	18.5	18.0	15.5	12.0	10.5	7.5	14.5	12.6	16.8	75.2	26.5	7.2
25	27.2	SW	12:53	22.5	18.5	19.0	19.0	15.5	12.0	10.5	7.5	14.5	14.5	16.7	86.6	27.0	5.2
26	24.5	ENE	14:11	23.0	20.0	20.0	20.0	16.0	12.0	10.5	8.0	14.5	11.0	16.7	65.8	19.6	8.3
27	36.6	NW	14:09	22.5	19.5	20.0	20.0	16.5	12.5	10.5	8.0	14.4	16.1	16.7	96.2	30.4	2.6
28	27.5	WNW	15:13	25.0	20.5	21.0	21.0	17.0	12.5	11.0	8.0	14.3	13.5	16.7	80.8	25.9	5.4
29	24.6	NE	13:00	18.5	20.5	21.5	21.5	17.5	13.0	11.0	8.0	14.2	4.2	16.7	25.1	10.7	6.3
30	23.1	WNW	12:59	19.0	19.5	20.0	20.0	17.0	13.0	11.0	8.0	14.1	0.0	16.7	0.0	7.3	5.4
Total													323.4	500.1	64.7	689.3	196.1
Mean				17.9	16.9	17.4	17.5	15.0	11.2	9.6	7.0	15.4	1981-2010 Normal for Radiation				
Extreme	66.9	WSW	14:11	1971-2000 Normal for Soil Temperatures									258.2	500.1	51.6	625.7	227.9
Date	12			15.3	15.7	16.3	14.0	10.4	8.3	5.4		No. of Bright Sunshine days = 29					

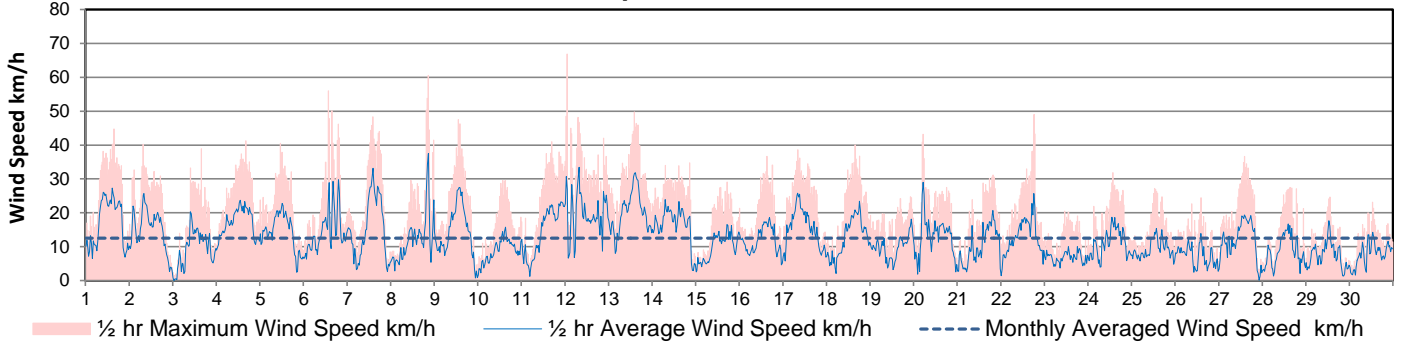
Note: Red numbers indicate manual calculation

NOTE: thick smoke from forest fires in northern Saskatchewan June 29-30

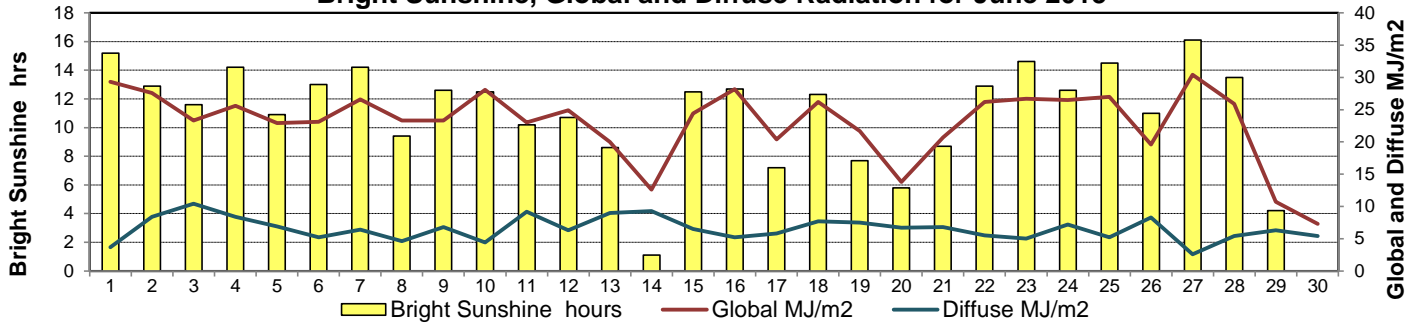
**SRC proudly recognizes the following CRS supporters:**



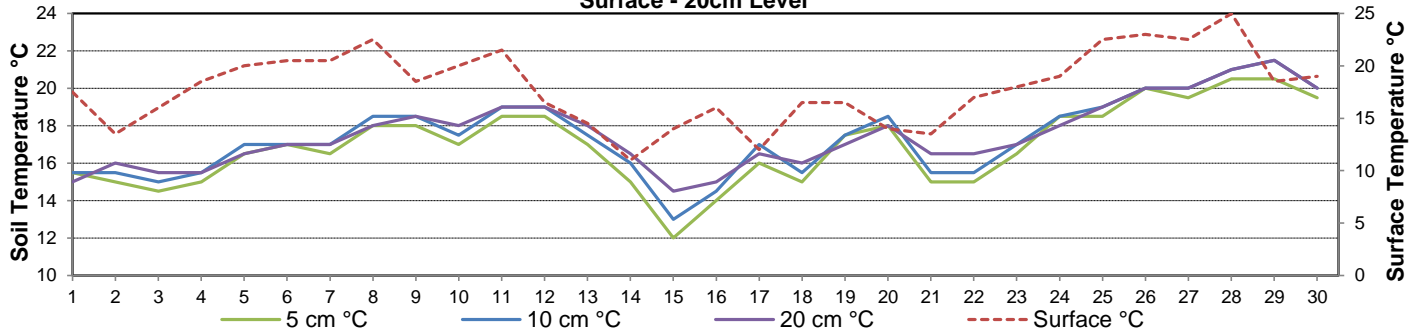
**Wind Speed for June 2015**



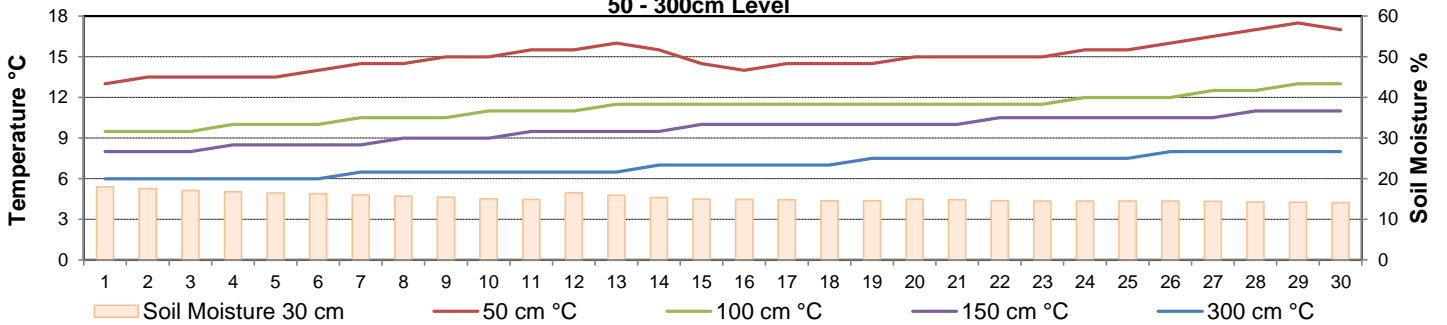
**Bright Sunshine, Global and Diffuse Radiation for June 2015**



**Soil Temperatures for June 2015  
Surface - 20cm Level**



**Soil Temperatures for June 2015  
50 - 300cm Level**





SRC CLIMATE REFERENCE STATION DAILY DATA REPORT



**SASKATOON STATION** 4057180

52°09' N 106°36' W 497 m asl Estab. 1963

Preliminary **JUNE** 2015

**Extreme Records for June**

Max/Min Temperature °C					Precipitation - Monthly mm					Wind Monthly km/h				CRS Bright Sunshine - Monthly			
S'toon Area	Date	Site	S'toon CRS	Date	S'toon Area	Date	Site	S'toon CRS	Date	S'toon Airport	Date	S'toon CRS**	Date	Hours	Year	No. of Days	Year
41.5	06/1988	S2	41.0	05/1988	186.8	1942	S	171.0	2005	117	01 <sup>S</sup> 1986	109.7 <sup>SW</sup>	22/2005	370.6	1978	30	1969*
-3.9	02/1917	US	-3.3	06/1967	5.0	2003	KCS	13.0	1985					175.3	2005	25	2002, 05

\*\*1975 forward \* more than one year

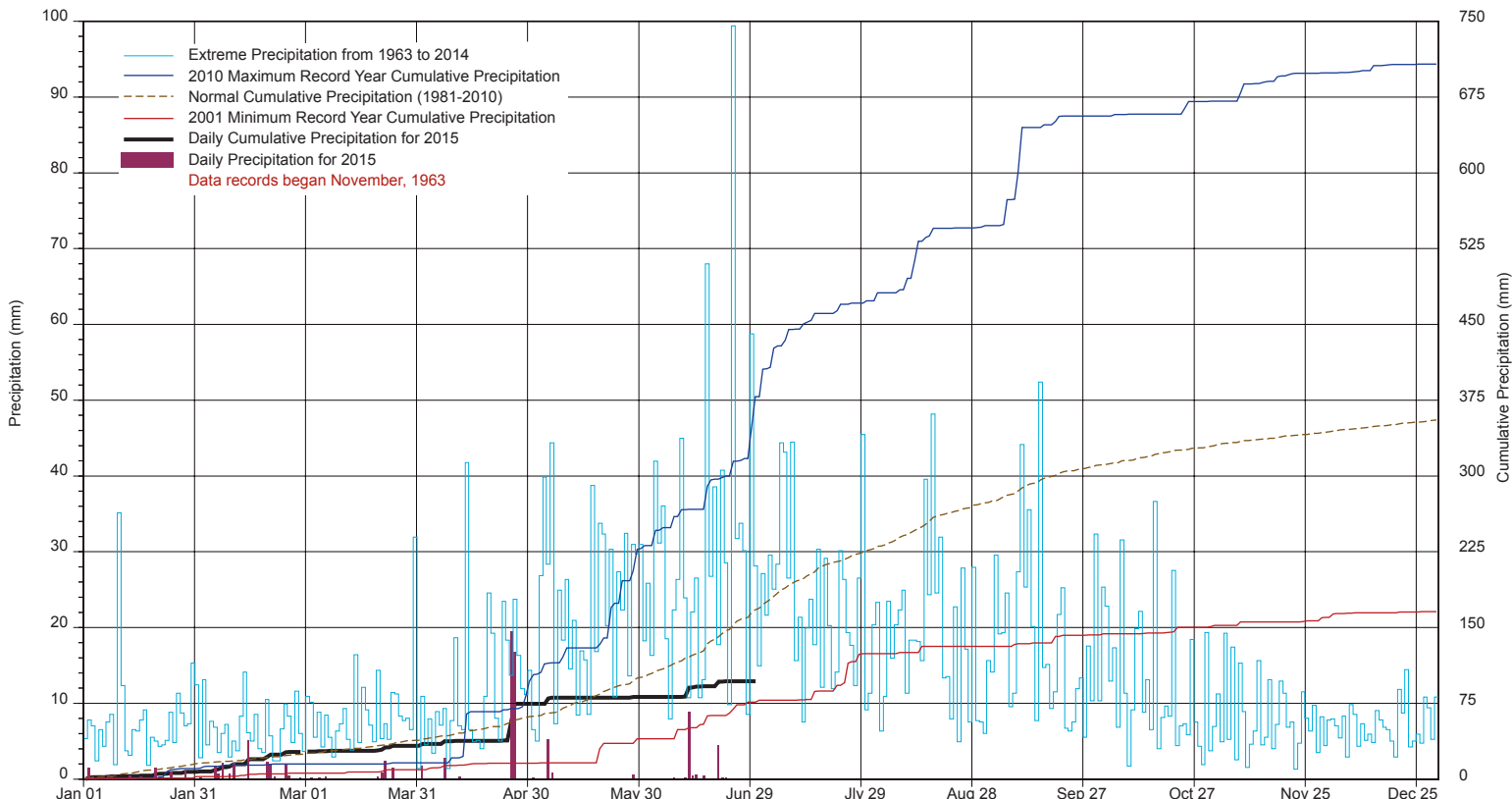
Notable Events for CRS Saskatoon - June						Saskatoon Area Stations			Glossary	
Element	Type	Day	New Record	Old Record	Year	SM	NWMP	c. 1892-1901	T	Trace of precipitation
Temperature	Extreme Minimum Daily	14	12.9	13.0	1981	SE	Eby	1901-1941	Normal	30 year average beginning with the decade
						US	Univ. of Sask.	1915-1964	SOG	Depth of snow-on-the-ground in cm
						S	Saskatoon	1941-1942	na	not available
						SA	Saskatoon A	1942 -	<b>Degree-days</b>	
						NRC	Nat. Res. Council	1952-1966	Tm	Mean Temperature
						SRC	Sask. Res. Council	1963-	Growing	(Tm-5°C); if Tm ≤ 5°C then GDD = 0
						SWT	S'toon Water Treatment Plant	1974 -	Heating	(18°C-Tm); if Tm ≤ 18°C then HDD = 0
						SC	S'toon Central Ave	1974-1989	Cooling	(Tm-18°C); if Tm ≥ 18°C then CDD = 0
						S1	Saskatoon 1	1976-1978	Extreme Cooling	(Tm-24°C); if Tm ≥ 24°C then CDD = 0
						S2	Saskatoon 2	1977-1990		
						K	S'toon Kernen Farm	1993-2004		
						KCS	S'toon Kernen Farm CS	1996-		
						RCS	Environment Canada	2008-		
						SF	Sutherland Forestry	1943-1970		

**Summary**

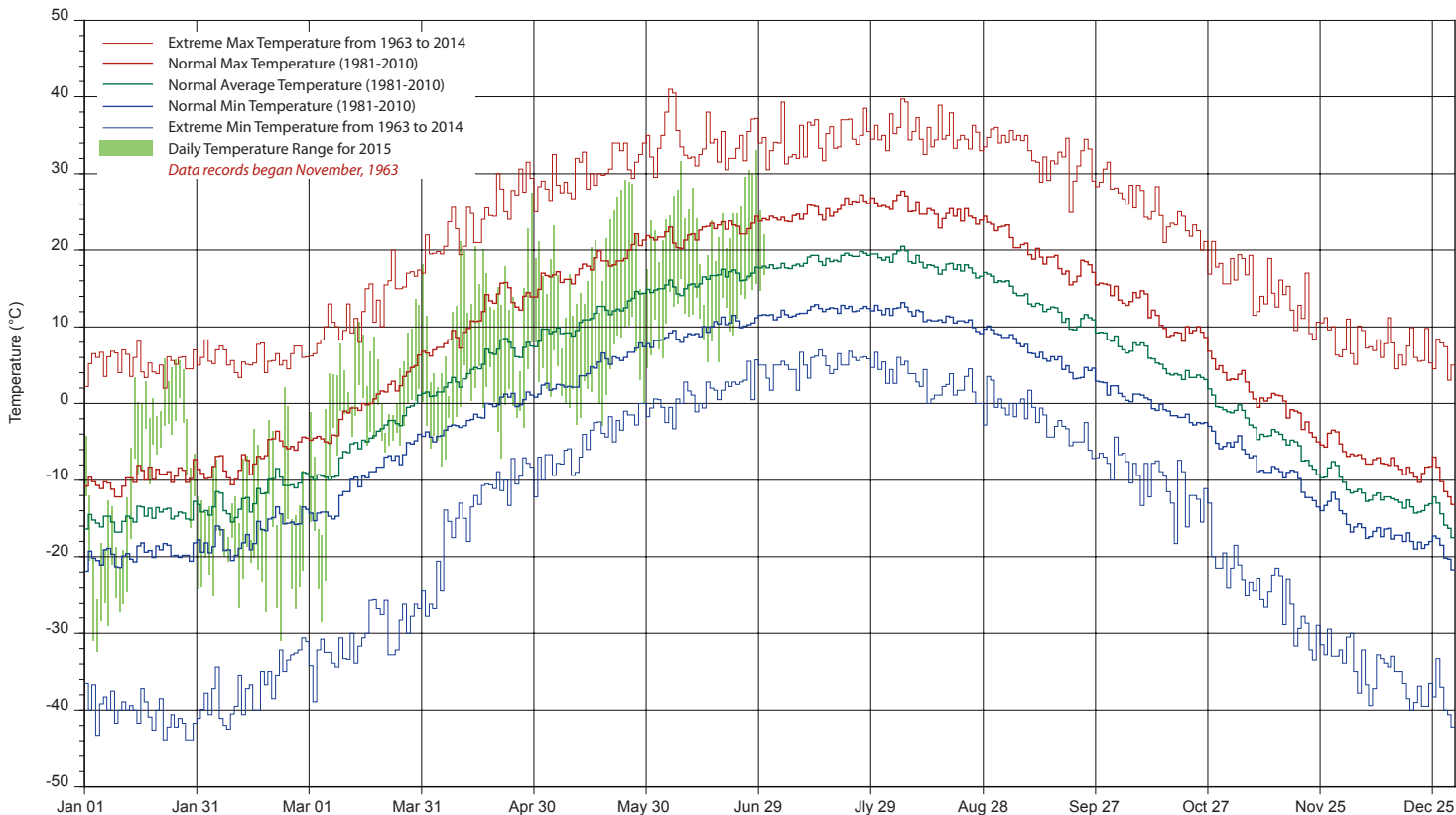
**SRC proudly recognizes the following CRS supporters:**



# SASKATCHEWAN RESEARCH COUNCIL SASKATOON CLIMATE REFERENCE STATION 2015 PRECIPITATION AND NORMALS



## 2015 TEMPERATURES AND NORMALS



SRC proudly recongnizes the following CRS supporters:

