



# SRC CLIMATE REFERENCE STATION DAILY DATA REPORT

**SASKATOON STATION 4057180**

52°09' N 106°36' W 497 m asl Estab. 1963

Preliminary **MAY 2015**

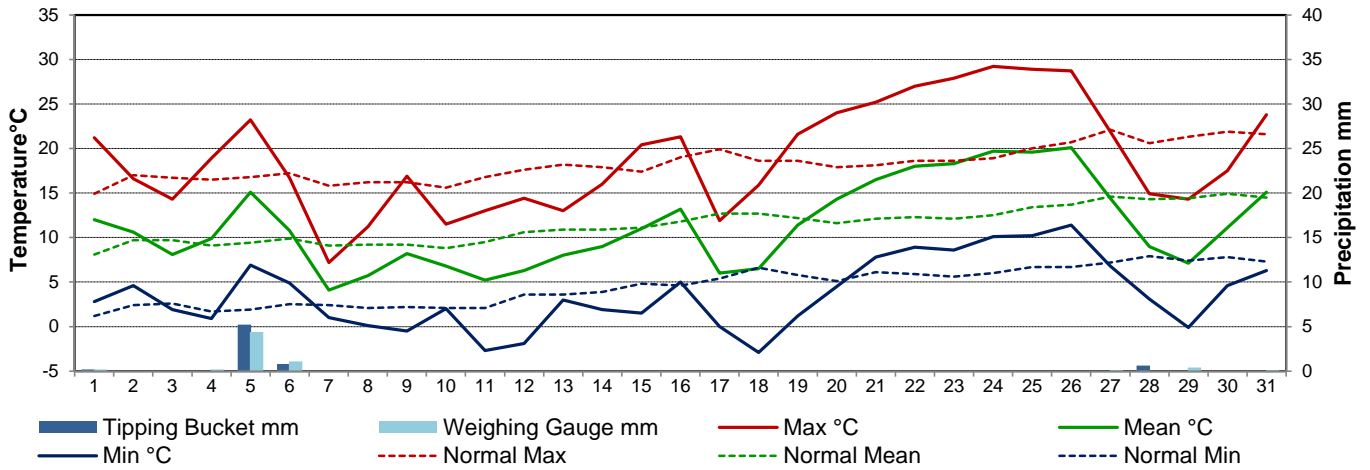
Day	Temperature						Degree-days			Precipitation			Relative Humidity		Station Pressure (sea level)	
	Max	Normal Max	Min	Normal Min	Mean	Normal Mean	Growing	Heating	Cooling	Weighing Gauge	Tipping Bucket	Notes	Max ½ hr Avg	Min ½ hr Avg	Max ½ hr Avg	Min ½ hr Avg
	°C	1981-2010	°C	1981-2010	°C	1981-2010	5°C base	18°C base	18°C base	mm	mm		%	%	mbar	mbar
1	21.2	14.9	2.8	1.2	12.0	8.1	7.0	6.0	0.0	0.2	0.2		75	19	1011	1001
2	16.6	17.0	4.6	2.4	10.6	9.7	5.6	7.4	0.0	0.0	0.0		90	25	1009	1002
3	14.3	16.7	1.9	2.6	8.1	9.7	3.1	9.9	0.0	0.0	0.0		92	30	1018	1010
4	18.9	16.5	0.9	1.7	9.9	9.1	4.9	8.1	0.0	0.2	0.0		86	23	1019	1012
5	23.2	16.8	6.9	1.9	15.1	9.4	10.1	2.9	0.0	4.4	5.2	t-storm	79	35	1011	1004
6	16.7	17.2	4.9	2.5	10.8	9.9	5.8	7.2	0.0	1.1	0.8		91	69	1013	1004
7	7.2	15.8	1.0	2.4	4.1	9.1	0.0	13.9	0.0	0.0	0.0		89	49	1022	1013
8	11.2	16.2	0.1	2.1	5.7	9.2	0.7	12.3	0.0	0.0	0.0		72	29	1024	1022
9	16.9	16.2	-0.5	2.2	8.2	9.2	3.2	9.8	0.0	0.0	0.0		82	15	1024	1020
10	11.5	15.6	2.0	2.1	6.8	8.8	1.8	11.2	0.0	0.0	0.0		94	31	1025	1022
11	13.0	16.8	-2.7	2.1	5.2	9.5	0.2	12.8	0.0	0.0	0.0		96	22	1024	1019
12	14.4	17.6	-1.9	3.6	6.3	10.6	1.3	11.7	0.0	0.0	0.0		89	25	1021	1019
13	13.0	18.2	3.0	3.6	8.0	10.9	3.0	10.0	0.0	0.0	0.0		82	44	1022	1020
14	16.0	17.9	1.9	3.9	9.0	10.9	4.0	9.0	0.0	0.0	0.0		96	30	1021	1016
15	20.4	17.4	1.5	4.8	11.0	11.1	6.0	7.0	0.0	0.0	0.0		89	22	1017	1011
16	21.3	19.0	5.0	4.6	13.2	11.8	8.2	4.8	0.0	0.0	0.0		84	24	1021	1011
17	11.9	19.9	0.0	5.4	6.0	12.7	1.0	12.0	0.0	0.0	0.0		74	16	1029	1011
18	15.9	18.6	-2.9	6.6	6.5	12.7	1.5	11.5	0.0	0.0	0.0		90	16	1032	1028
19	21.6	18.6	1.2	5.8	11.4	12.2	6.4	6.6	0.0	0.0	0.0		60	13	1028	1023
20	24.0	17.9	4.5	5.1	14.3	11.6	9.3	3.7	0.0	0.0	0.0		55	13	1024	1020
21	25.2	18.1	7.8	6.1	16.5	12.1	11.5	1.5	0.0	0.0	0.0		53	14	1021	1017
22	27.0	18.6	8.9	5.9	18.0	12.3	13.0	0.0	0.0	0.0	0.0		56	14	1018	1015
23	27.9	18.6	8.6	5.6	18.3	12.1	13.3	0.0	0.3	0.0	0.0		70	12	1019	1016
24	29.2	18.9	10.1	6.0	19.7	12.5	14.7	0.0	1.7	0.0	0.0		61	12	1017	1012
25	28.9	20.0	10.2	6.7	19.6	13.4	14.6	0.0	1.6	0.0	0.0		69	14	1011	1008
26	28.7	20.7	11.4	6.7	20.1	13.7	15.1	0.0	2.1	0.0	0.0		68	19	1014	1009
27	21.9	22.1	6.8	7.2	14.4	14.6	9.4	3.6	0.0	0.1	0.0		86	26	1017	1012
28	14.9	20.6	3.1	7.9	9.0	14.3	4.0	9.0	0.0	0.0	0.6		90	32	1026	1012
29	14.3	21.3	-0.1	7.4	7.1	14.4	2.1	10.9	0.0	0.4	0.0		92	27	1029	1026
30	17.5	21.9	4.6	7.8	11.1	14.9	6.1	6.9	0.0	0.0	0.0		64	28	1026	1019
31	23.8	21.6	6.3	7.3	15.1	14.5	10.1	2.9	0.0	0.1	0.0	t-storm	71	32	1019	1006
Total							197.0	212.6	5.7	6.5	6.8		Extreme / Date	Extreme / Date	Extreme / Date	Extreme / Date
Avg	19.0	18.3	3.6	4.6	11.3	11.5	1981-2010 Normal			39.4	1981-2010 Normal					
Extreme Date	29.2		-2.9				206.9	209.3	6.3	81.1	Cumulative		96	12	1032	1001
	24		18							100.9	Cumulative Normal		11	23	18	1

Note: Red numbers indicate manual calculation; Red cell indicate data not available

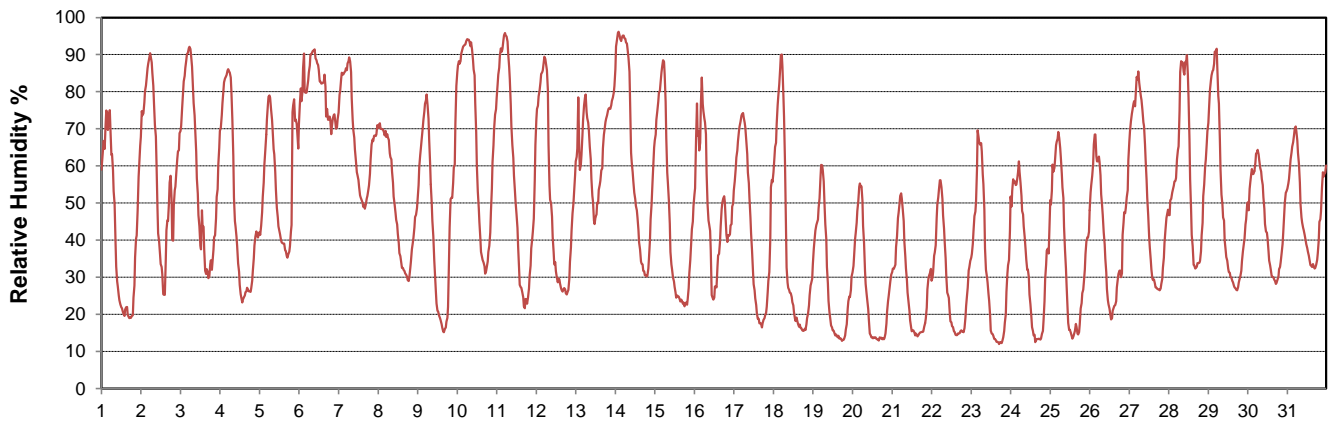
**SRC proudly recognizes the following CRS supporters:**



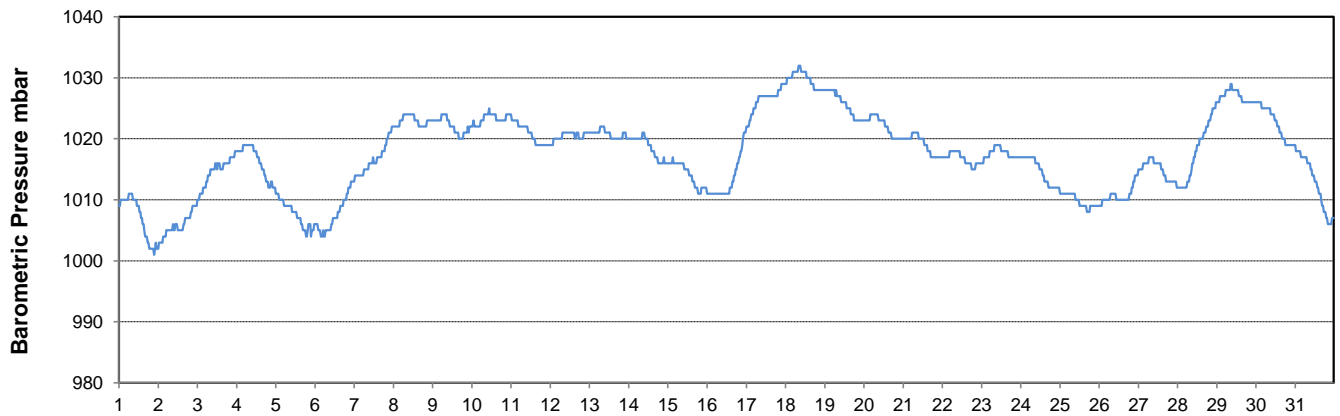
### Temperature and Precipitation for May 2015



### Relative Humidity for May 2015



### Barometric Pressure Corrected to Sea Level for May 2015





SRC CLIMATE REFERENCE STATION DAILY DATA REPORT

SASKATOON STATION 4057180

52°09' N 106°36' W 497 m asl Estab. 1963

Preliminary MAY 2015

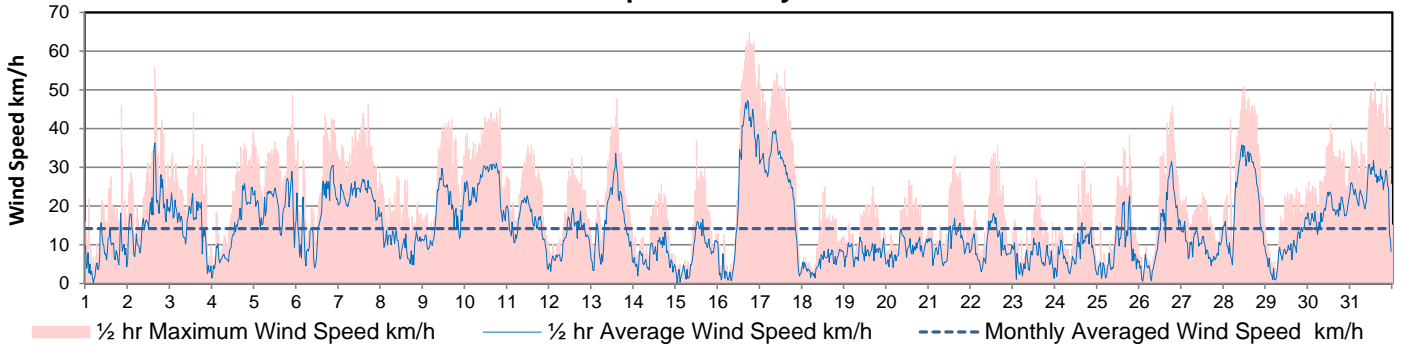
Day	Wind Gust			Soil Temperatures at 0900hrs								Soil Moisture 30 cm	Radiation				
	Max	Direction	Time	Surface	5 cm	10 cm	20 cm	50 cm	100 cm	150 cm	300 cm		0900hrs	Bright Sunshine	Possible	% Possible	Global
	km/h			°C	°C	°C	°C	°C	°C	°C	°C	%	hours	hours		MJ/m <sup>2</sup>	MJ/m <sup>2</sup>
1	45.9	SW	20:25	12.5	7.0	7.5	8.0	6.5	4.5	4.0	4.0	28	13.2	14.9	88.5	20.4	8.1
2	55.5	NW	15:12	10.5	8.5	9.0	9.0	7.0	5.0	4.0	4.0	28	9.6	15.0	64.1	18.8	5.7
3	44.0	WSW	13:04	7.5	7.5	8.0	8.5	7.5	5.0	4.5	4.0	28	10.3	15.0	68.5	19.4	5.4
4	39.2	E	23:10	9.5	6.5	7.5	8.0	7.5	5.0	4.5	4.0	27	13.8	15.1	91.4	23.3	6.4
5	48.7	S	21:32	13.0	9.0	9.5	9.0	7.5	5.5	4.5	4.0	27	10.8	15.2	71.2	22.0	6.2
6	43.7	NW	16:20	7.5	11.0	11.5	11.0	8.0	5.5	4.5	4.0	27	0.1	15.2	0.7	6.5	4.9
7	46.2	NNE	16:54	3.5	8.0	9.0	9.5	8.5	6.0	5.0	4.0	27	9.3	15.3	60.9	20.6	7.5
8	27.7	N	9:00	2.5	7.5	8.0	8.5	8.0	6.0	5.0	4.5	26	12.1	15.3	78.9	26.0	3.8
9	42.4	WSW	16:19	7.0	7.5	8.5	9.0	8.5	6.0	5.0	4.5	26	11.1	15.4	72.2	25.2	3.4
10	45.3	ENE	19:31	2.0	9.0	9.5	9.5	8.5	6.0	5.0	4.5	26	9.4	15.4	60.9	21.4	5.4
11	35.8	ENE	13:31	4.0	7.5	8.5	9.0	8.5	6.5	5.5	4.5	26	14.6	15.5	94.3	28.2	3.5
12	32.7	E	14:15	8.5	8.0	9.0	9.5	9.0	6.5	5.5	4.5	26	11.5	15.6	74.0	21.4	8.0
13	47.7	ESE	18:01	9.0	8.5	9.5	9.5	9.0	6.5	5.5	4.5	25	9.0	15.6	57.7	20.8	6.3
14	25.5	SE	15:48	6.0	9.5	10.0	9.5	8.5	6.5	5.5	4.5	25	8.5	15.7	54.3	19.2	6.7
15	36.9	SE	11:40	11.5	9.0	9.5	10.0	9.5	7.0	5.5	4.5	25	14.8	15.7	94.3	26.1	5.2
16	64.7	NE	17:41	13.5	11.5	11.5	11.0	10.0	7.0	5.5	4.5	25	10.9	15.8	69.2	21.0	9.3
17	54.8	NE	13:33	2.5	9.5	10.5	11.0	9.5	7.0	6.0	4.5	24	13.3	15.8	84.2	29.0	4.4
18	24.8	SSE	12:46	7.5	8.0	9.0	10.0	10.0	7.0	6.0	5.0	24	15.4	15.9	97.2	29.1	2.3
19	24.9	W	16:20	11.0	9.5	10.5	11.0	10.0	7.5	6.0	5.0	24	15.2	15.9	95.6	28.4	2.8
20	26.6	WSW	12:34	15.0	11.0	11.5	11.5	10.5	7.5	6.0	5.0	24	15.0	16.0	94.0	28.1	3.3
21	32.8	SSW	14:58	16.0	11.5	12.5	12.5	10.5	7.5	6.0	5.0	23	15.3	16.0	95.7	28.9	2.8
22	35.6	SW	15:27	18.0	13.0	13.5	13.5	11.0	7.5	6.5	5.0	23	15.2	16.0	94.8	28.7	3.0
23	26.9	NNW	13:25	18.0	14.0	14.5	14.0	11.5	8.0	6.5	5.0	22	13.2	16.1	82.1	23.5	7.8
24	31.4	W	16:32	18.0	14.5	14.5	14.5	12.0	8.0	6.5	5.0	22	13.9	16.1	86.2	27.3	5.0
25	38.2	NNW	18:26	19.5	15.0	15.5	15.5	12.5	8.5	7.0	5.0	21	12.8	16.2	79.2	25.1	7.0
26	45.6	NE	18:47	19.5	15.5	16.0	15.5	13.0	8.5	7.0	5.0	21	13.7	16.2	84.5	24.9	7.3
27	23.5	NE	11:44	11.5	15.0	16.0	16.0	13.0	9.0	7.0	5.5	20	12.3	16.3	75.7	26.1	5.5
28	50.9	N	11:55	10.5	16.0	16.5	16.0	13.5	9.0	7.5	5.5	20	8.2	16.3	50.3	18.1	4.1
29	24.5	ENE	17:23	8.0	11.0	12.5	14.0	13.0	9.5	7.5	5.5	19	15.3	16.3	93.8	30.1	3.5
30	41.1	ESE	12:36	8.5	12.5	13.5	14.0	12.5	9.5	7.5	5.5	19	10.6	16.4	64.8	23.3	7.4
31	51.9	SE	14:09	14.0	13.0	13.5	14.0	12.5	9.5	8.0	5.5	18	13.5	16.4	82.4	27.1	5.5
Total													371.9	487.30	76.3	738.0	167.5
Mean				10.5	10.5	11.2	11.3	9.9	7.0	5.8	4.7	24	1981-2010 Normal for Radiation				
Extreme	64.7	NE	17:41	1971- 2000 Normal for Soil Temperatures									256.9	487.6	52.7	603.5	221.5
Date	16				10.3	10.8	11.3	9.3	6.4	4.8	3.4		No. of Bright Sunshine days = 31				

Note: Red numbers indicate manual calculation

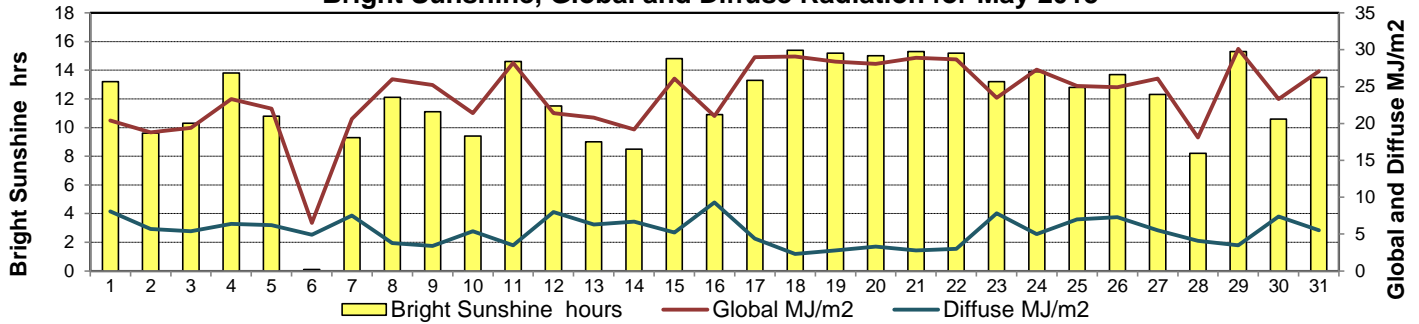
SRC proudly recognizes the following CRS supporters:



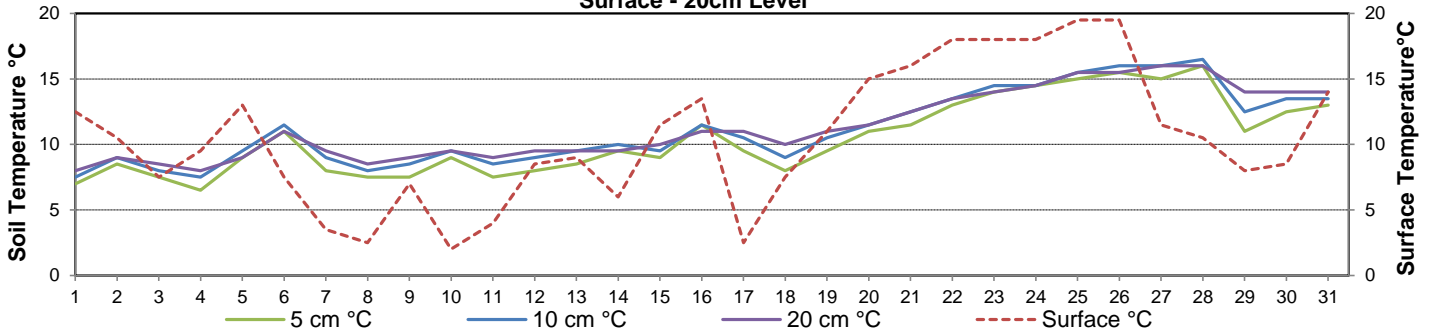
**Wind Speed for May 2015**



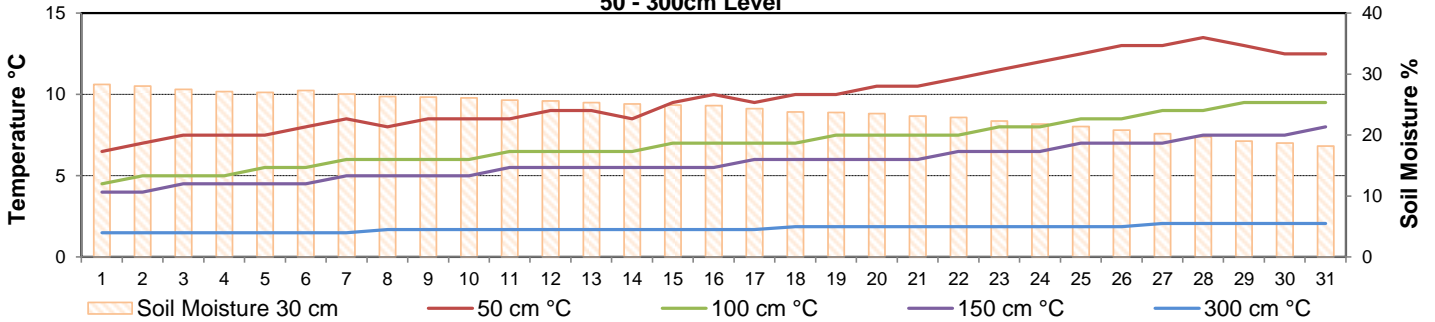
**Bright Sunshine, Global and Diffuse Radiation for May 2015**



**Soil Temperatures for May 2015  
Surface - 20cm Level**



**Soil Temperatures for May 2015  
50 - 300cm Level**





**SRC CLIMATE REFERENCE STATION DAILY DATA REPORT**  
**SASKATOON STATION 4057180**

52°09' N 106°36' W 497 m asl Estab. 1963

Preliminary **MAY** **2015**

**Extreme Records for May**

Max/Min Temperature °C			Precipitation - Monthly mm			Wind Monthly km/h			CRS Bright Sunshine - Monthly										
S'toon Area	Date	Site	S'toon CRS	Date	Site	S'toon Area	Date	Site	S'toon CRS	Date	S'toon Airport	Date	S'toon CRS**	Date	Hours	Year	No. of Days	Year	
37.2	27/1936	SE	35.0	30/1988		178.0	1977	SWT	145.3	1977	132	17 <sup>SW</sup>	1965	108	1991	389.3	1980	31	1966*
-12.8	06/1907	SE	-10.0	02/1967		0.0	02, '02, 1988	SWT, K, SC	0.2	2002						153.0	1996	24	2006

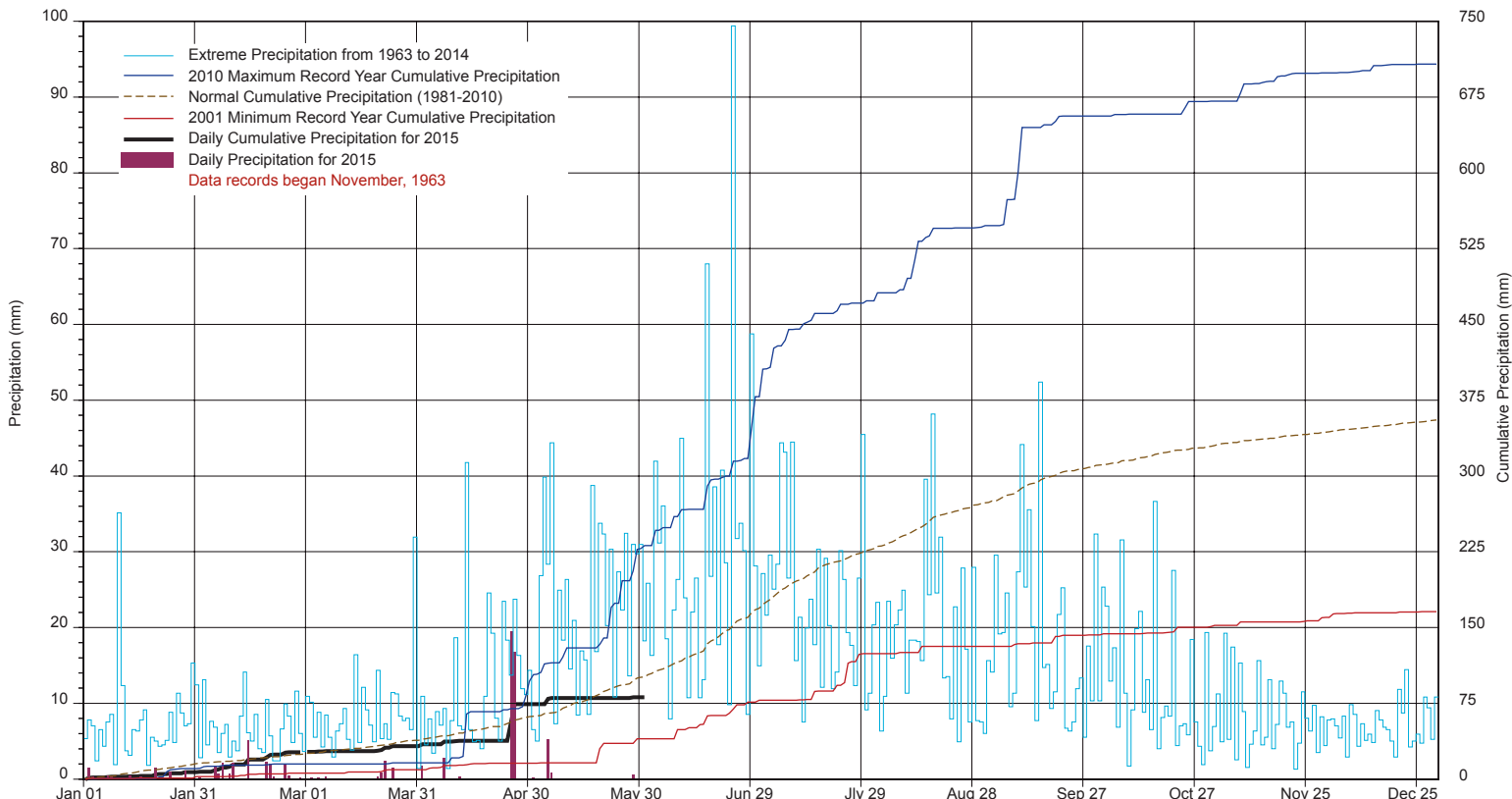
\*\*1975 forward \* more than one year

Notable Events for CRS Saskatoon - May						Saskatoon Area Stations			Glossary	
Element	Type	Day	New Record	Old Record	Year	SM	NWMP	c. 1892-1901	T	Trace of precipitation
Temperature	Extreme Minimum Daily	29	-0.1	0	1982	SE	Eby	1901-1941	Normal	30 year average beginning with the decade
Bright Sunshine	No of days >= 15 hrs greatest number of monthly bright sunshine days		6	6	1966	US	Univ. of Sask.	1915-1964	SOG	Depth of snow-on-the-ground in cm
			31	31	1966	S	Saskatoon	1941-1942	na	not available
						SA	Saskatoon A	1942 -	<b>Degree-days</b>	
						NRC	Nat. Res. Council	1952-1966	Tm	Mean Temperature
						SRC	Sask. Res. Council	1963-	Growing	(Tm-5°C); if Tm ≤ 5°C then GDD = 0
						SWT	S'toon Water Treatment Plant	1974 -	Heating	(18°C-Tm); if Tm ≤ 18°C then HDD = 0
						SC	S'toon Central Ave	1974-1989	Cooling	(Tm-18°C); if Tm ≥ 18°C then CDD = 0
						S1	Saskatoon 1	1976-1978	Extreme Cooling	(Tm-24°C); if Tm ≥ 24°C then CDD = 0
						S2	Saskatoon 2	1977-1990	Spring maintenance 20 May 2015 including calibrating Belfort Weighing Gauge, radiation sensor descicant replacement	
					K	S'toon Kernen Farm	1993-2004			
					KCS	S'toon Kernen Farm CS	1996-			
					RCS	Environment Canada	2008-			
						SF	Sutherland Forestry	1943-1970		

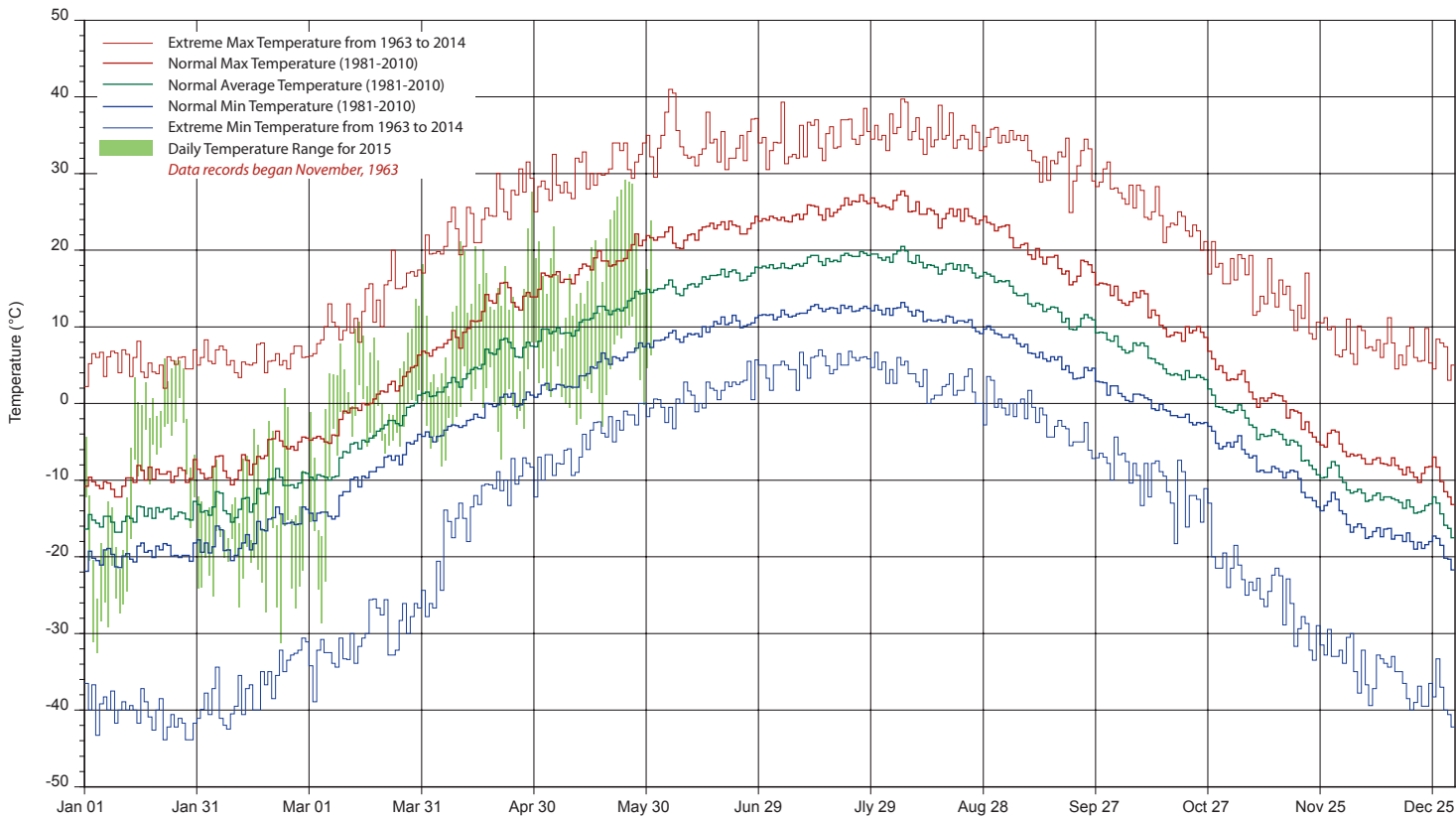
**SRC proudly recognizes the following CRS supporters:**



# SASKATCHEWAN RESEARCH COUNCIL SASKATOON CLIMATE REFERENCE STATION 2015 PRECIPITATION AND NORMALS



## 2015 TEMPERATURES AND NORMALS



SRC proudly recongnizes the following CRS supporters:

