



SRC CLIMATE REFERENCE STATION DAILY DATA REPORT

SASKATOON STATION 4057180

52°09' N 106°36' W 497 m asl Estab. 1963

Preliminary **MAY 2017**

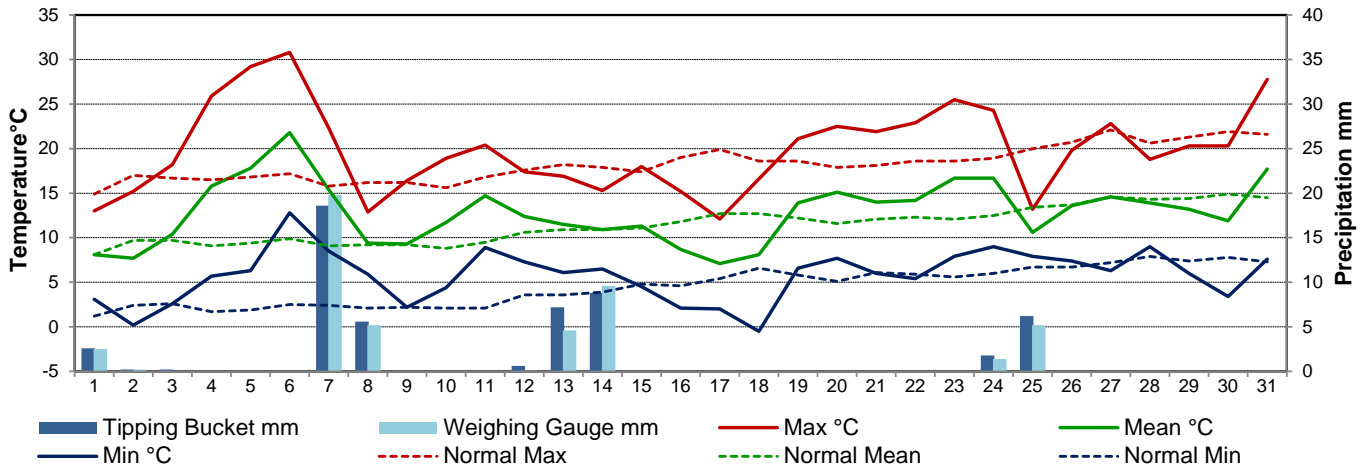
Day	Temperature						Degree-days			Precipitation			Relative Humidity		Station Pressure (sea level)	
	Max	Normal Max	Min	Normal Min	Mean	Normal Mean	Growing	Heating	Cooling	Weighing Gauge	Tipping Bucket	Notes	Max ½ hr Avg	Min ½ hr Avg	Max ½ hr Avg	Min ½ hr Avg
	°C	1981-2010	°C	1981-2010	°C	1981-2010	5°C base	18°C base	18°C base	mm	mm		%	%	mbar	mbar
1	13.0	14.9	3.1	1.2	8.1	8.1	3.1	9.9	0.0	2.5	2.6	light rain	94	48	1012	1008
2	15.2	17.0	0.2	2.4	7.7	9.7	2.7	10.3	0.0	0.2	0.2	fog am / t-storm pm	98	42	1015	1012
3	18.2	16.7	2.6	2.6	10.4	9.7	5.4	7.6	0.0	0.0	0.2		90	22	1017	1014
4	25.9	16.5	5.7	1.7	15.8	9.1	10.8	2.2	0.0	0.0	0.0		65	19	1015	1011
5	29.2	16.8	6.3	1.9	17.8	9.4	12.8	0.2	0.0	0.0	0.0		79	17	1012	1004
6	30.8	17.2	12.8	2.5	21.8	9.9	16.8	0.0	3.8	0.0	0.0		60	20	1005	1002
7	22.3	15.8	8.5	2.4	15.4	9.1	10.4	2.6	0.0	19.8	18.6	rain	93	37	1010	1002
8	12.9	16.2	5.9	2.1	9.4	9.2	4.4	8.6	0.0	5.2	5.6	rain	93	61	1015	1009
9	16.4	16.2	2.2	2.2	9.3	9.2	4.3	8.7	0.0	0.0	0.0		95	38	1016	1014
10	18.9	15.6	4.4	2.1	11.7	8.8	6.7	6.3	0.0	0.0	0.0		88	36	1016	1015
11	20.4	16.8	8.9	2.1	14.7	9.5	9.7	3.3	0.0	0.0	0.0		70	29	1018	1016
12	17.4	17.6	7.3	3.6	12.4	10.6	7.4	5.6	0.0	0.1	0.6	light rain	71	33	1017	1007
13	16.9	18.2	6.1	3.6	11.5	10.9	6.5	6.5	0.0	4.6	7.2	light rain	85	42	1008	1003
14	15.3	17.9	6.5	3.9	10.9	10.9	5.9	7.1	0.0	9.6	8.8	light rain	93	56	1007	1002
15	18.0	17.4	4.5	4.8	11.3	11.1	6.3	6.7	0.0	0.0	0.0		86	28	1010	1005
16	15.2	19.0	2.1	4.6	8.7	11.8	3.7	9.3	0.0	0.0	0.0		96	45	1011	1006
17	12.1	19.9	2.0	5.4	7.1	12.7	2.1	10.9	0.0	0.0	0.0		90	29	1022	1007
18	16.6	18.6	-0.5	6.6	8.1	12.7	3.1	9.9	0.0	0.0	0.0		86	19	1024	1021
19	21.1	18.6	6.6	5.8	13.9	12.2	8.9	4.1	0.0	0.0	0.0		53	15	1021	1016
20	22.5	17.9	7.7	5.1	15.1	11.6	10.1	2.9	0.0	0.0	0.0		58	19	1016	1015
21	21.9	18.1	6.0	6.1	14.0	12.1	9.0	4.0	0.0	0.0	0.0		83	23	1018	1015
22	22.9	18.6	5.4	5.9	14.2	12.3	9.2	3.8	0.0	0.0	0.0		87	20	1021	1017
23	25.5	18.6	7.9	5.6	16.7	12.1	11.7	1.3	0.0	0.0	0.0		64	16	1019	999
24	24.3	18.9	9.0	6.0	16.7	12.5	11.7	1.3	0.0	1.4	1.8	showers	77	28	999	984
25	13.2	20.0	7.9	6.7	10.6	13.4	5.6	7.4	0.0	5.2	6.2	light rain	92	71	1001	989
26	19.8	20.7	7.4	6.7	13.6	13.7	8.6	4.4	0.0	0.0	0.0		88	27	1007	1001
27	22.8	22.1	6.3	7.2	14.6	14.6	9.6	3.4	0.0	0.0	0.0		81	19	1013	1007
28	18.8	20.6	9.0	7.9	13.9	14.3	8.9	4.1	0.0	0.0	0.0		74	36	1021	1013
29	20.3	21.3	6.0	7.4	13.2	14.4	8.2	4.8	0.0	0.0	0.0		78	18	1022	1018
30	20.3	21.9	3.4	7.8	11.9	14.9	6.9	6.1	0.0	0.0	0.0		84	19	1022	1016
31	27.8	21.6	7.6	7.3	17.7	14.5	12.7	0.3	0.0	0.0	0.0		60	17	1016	1008
Total							243.2	163.6	3.8	48.6	51.8		Extreme / Date	Extreme / Date	Extreme / Date	Extreme / Date
Avg	19.9	18.3	5.8	4.6	12.8	11.5	1981-2010 Normal			39.4	1981-2010 Normal					
Extreme Date	30.8		-0.5				206.9	209.3	6.3	98.1	Cumulative		98	15	1024	984
	6		18							100.9	Cumulative Normal		2	19	18	24

Note: Red numbers indicate manual calculation; Red cell indicate data not available

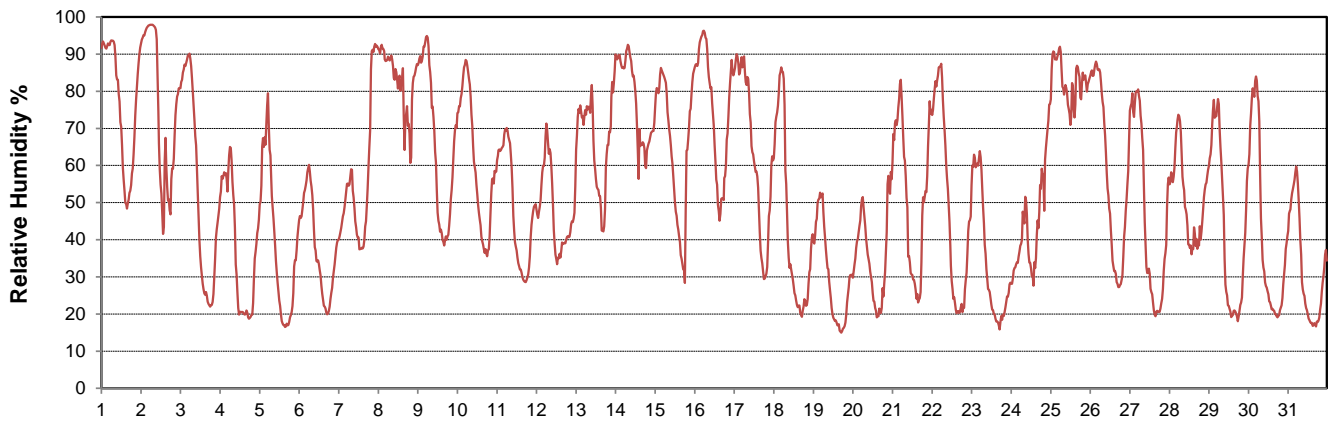
SRC proudly recognizes the following CRS supporters:



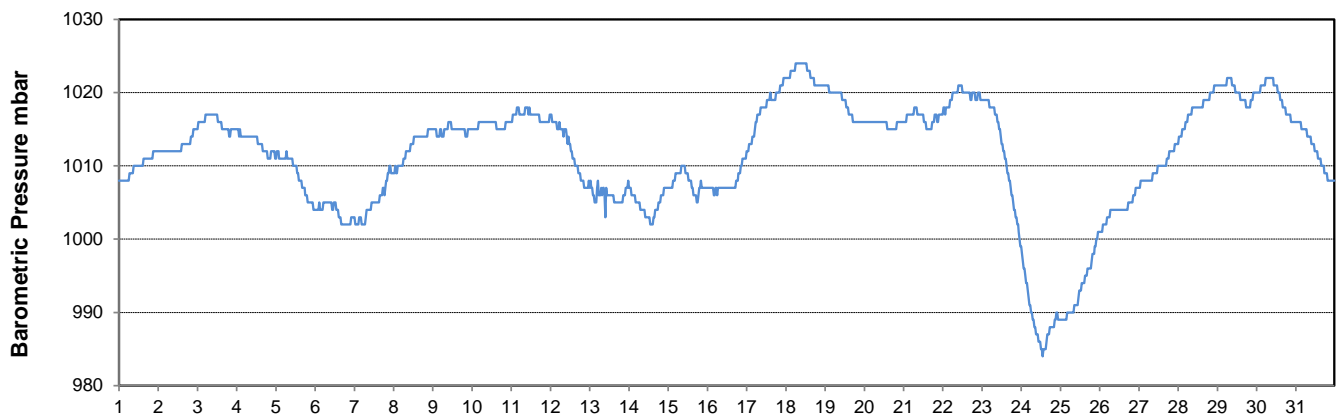
Temperature and Precipitation for May 2017



Relative Humidity for May 2017



Barometric Pressure Corrected to Sea Level for May 2017





SRC CLIMATE REFERENCE STATION DAILY DATA REPORT

SASKATOON STATION 4057180

52°09' N 106°36' W 497 m asl Estab. 1963

Preliminary **MAY 2017**

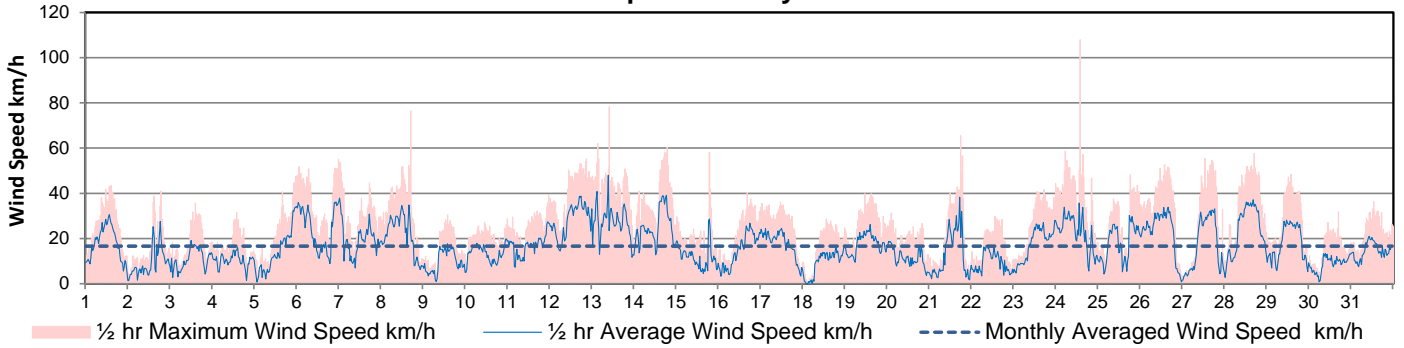
Day	Wind Gust			Soil Temperatures at 0900hrs								Soil Moisture 30 cm	Radiation				
	Max	Direction	Time	Surface	5 cm	10 cm	20 cm	50 cm	100 cm	150 cm	300 cm		0900hrs	Bright Sunshine	Possible	% Possible	Global
	km/h			°C	°C	°C	°C	°C	°C	°C	°C	%	hours	hours		MJ/m ²	MJ/m ²
1	43.5	NE	14:16	7.0	6.5	7.0	6.0	4.0	2.0	2.0	3.0	24	7.2	15.0	48.2	17.0	5.8
2	40.9	NW	18:37	4.0	6.5	7.0	6.5	4.5	2.5	2.0	3.0	24	8.1	15.0	54.0	16.1	8.5
3	35.7	WNW	14:10	8.0	7.0	7.0	7.0	5.0	3.0	2.5	3.0	24	14.0	15.1	92.9	22.5	7.8
4	31.5	WNW	13:31	12.0	8.5	8.5	8.0	6.0	3.0	2.5	3.0	24	12.7	15.1	83.9	22.3	6.0
5	47.4	ESE	23:58	16.5	9.5	9.5	9.0	6.5	3.5	2.5	3.0	24	12.0	15.2	79.0	24.2	3.4
6	55.0	SE	23:51	17.5	12.0	12.5	11.0	7.0	3.5	3.0	3.0	24	7.9	15.2	51.8	18.9	7.7
7	53.6	ESE	0:01	18.5	13.0	13.5	12.0	8.0	4.0	3.0	3.0	24	6.3	15.3	41.2	18.2	5.8
8	76.4	N	16:38	7.5	11.0	12.0	12.0	9.0	4.5	3.5	3.5	29	3.2	15.4	20.8	10.2	5.8
9	30.4	NNE	13:31	9.0	8.5	9.5	10.0	9.0	5.0	3.5	3.5	29	9.6	15.4	62.3	22.6	6.5
10	28.7	SE	23:56	9.5	10.0	11.0	11.0	9.0	5.0	4.0	3.5	28	13.1	15.5	84.7	25.6	3.8
11	39.1	ESE	23:03	12.0	11.5	12.0	11.5	9.0	5.5	4.0	3.5	27	11.7	15.5	75.4	24.1	3.5
12	55.3	E	9:44	10.5	11.5	12.5	12.0	9.5	5.5	4.0	3.5	27	7.5	15.6	48.2	17.7	9.8
13	78.3	E	20:46	7.5	10.5	11.5	11.5	9.5	6.0	4.5	3.5	26	4.0	15.6	25.6	15.7	7.4
14	60.3	WSW	18:51	7.5	10.0	10.5	10.5	9.5	6.0	4.5	3.5	30	5.0	15.7	31.9	14.9	7.6
15	58.1	NNW	18:44	10.0	9.0	9.5	10.0	9.0	6.5	5.0	3.5	29	9.5	15.7	60.4	21.3	4.3
16	40.3	ENE	16:29	9.0	9.5	10.5	10.5	9.0	6.5	5.0	4.0	28	11.5	15.8	72.9	22.8	7.3
17	36.1	NE	11:22	3.5	9.5	10.5	11.0	9.5	6.5	5.0	4.0	27	7.2	15.8	45.5	18.3	7.8
18	28.7	SSE	13:20	10.0	7.5	8.5	9.5	9.0	6.5	5.0	4.0	27	15.4	15.9	97.0	28.9	3.0
19	39.9	SSW	14:31	13.0	10.0	11.0	11.0	9.0	6.5	5.5	4.0	26	13.6	15.9	85.4	27.6	4.4
20	31.3	S	2:10	14.5	11.0	11.5	11.5	9.5	6.5	5.5	4.0	26	13.9	16.0	87.0	26.5	4.3
21	65.5	N	17:46	16.0	12.0	12.5	12.5	10.0	7.0	5.5	4.0	25	10.8	16.0	67.4	21.8	7.1
22	29.7	ENE	13:03	14.5	11.5	12.0	12.5	10.5	7.0	5.5	4.5	25	14.9	16.1	92.8	28.3	3.3
23	44.3	S	23:54	17.5	13.0	13.5	13.5	11.0	7.0	6.0	4.5	24	9.5	16.1	59.0	19.6	9.4
24	107.9	SSW	13:45	14.0	13.5	14.0	13.5	11.0	7.5	6.0	4.5	24	3.7	16.2	22.9	12.7	5.6
25	48.3	NW	18:18	11.0	12.5	13.0	13.0	11.0	7.5	6.0	4.5	24	1.4	16.2	8.6	8.9	6.3
26	52.6	NNW	13:30	12.0	11.0	11.5	12.0	11.0	8.0	6.5	4.5	24	11.0	16.2	67.8	24.6	4.8
27	55.4	NNW	12:41	15.0	11.0	11.5	12.0	11.0	8.0	6.5	4.5	23	13.4	16.3	82.4	28.4	3.1
28	57.6	N	16:43	15.5	12.5	13.0	13.0	11.0	8.0	6.5	5.0	23	12.8	16.3	78.5	25.2	5.4
29	48.5	N	13:45	14.0	12.0	13.0	13.0	11.5	8.0	6.5	5.0	23	16.0	16.3	97.9	30.0	2.5
30	31.8	S	16:36	14.5	12.0	12.5	13.0	11.5	8.0	6.5	5.0	22	15.9	16.4	97.1	29.6	3.3
31	36.5	SSW	12:42	18.5	13.0	14.0	14.0	12.0	8.5	7.0	5.0	22	15.1	16.4	92.0	28.8	3.1
Total													317.9	488.11	65.1	673.3	174.4
Mean				11.9	10.5	11.2	11.1	9.1	5.9	4.7	3.9	25	1981-2010 Normal for Radiation				
Extreme	107.9	SSW	13:45	1971- 2000 Normal for Soil Temperatures									256.9	487.6	52.7	603.5	221.5
Date	24			10.3	10.8	11.3	9.3	6.4	4.8	3.4		No. of Bright Sunshine days = 31					

Note: Red numbers indicate manual calculation; Red cell indicate data not available

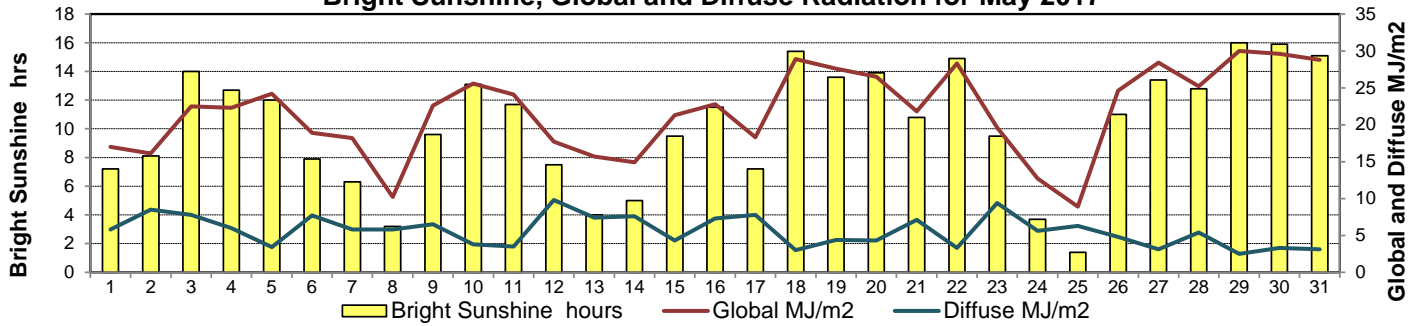
SRC proudly recognizes the following CRS supporters:



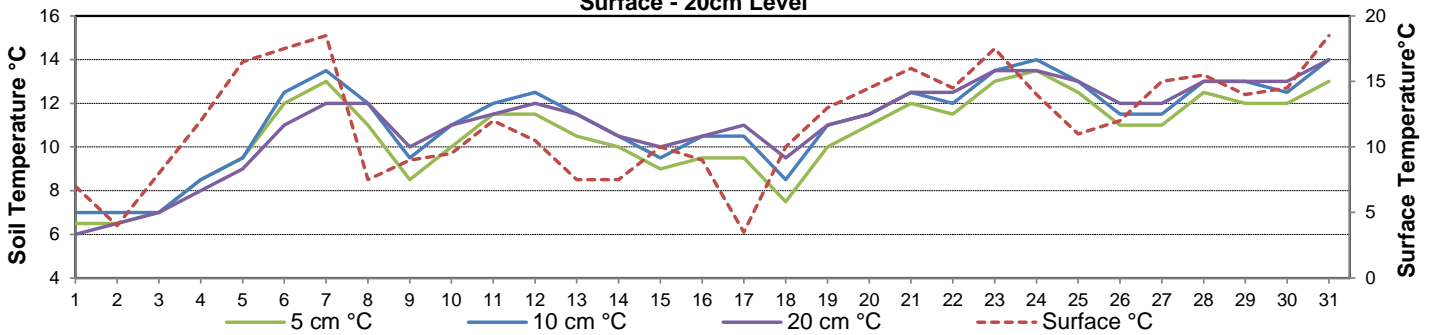
Wind Speed for May 2017



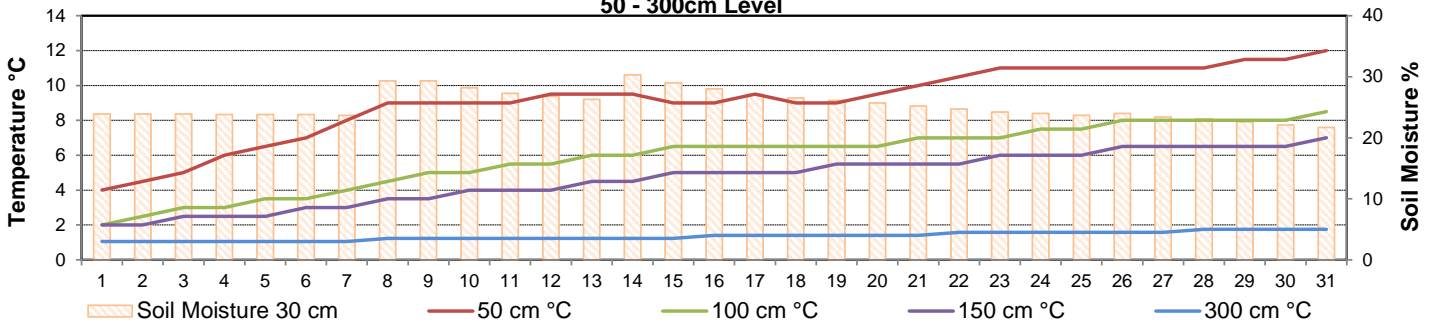
Bright Sunshine, Global and Diffuse Radiation for May 2017



Soil Temperatures for May 2017
Surface - 20cm Level



Soil Temperatures for May 2017
50 - 300cm Level





SRC CLIMATE REFERENCE STATION DAILY DATA REPORT

SASKATOON STATION 4057180

52°09' N 106°36' W 497 m asl Estab. 1963

Preliminary **MAY** 2017

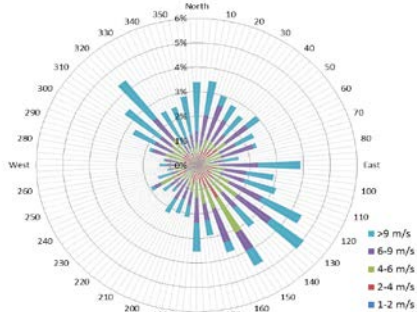
Extreme Records for May

Max/Min Temperature °C			Precipitation - Monthly mm				Wind Monthly km/h				CRS Bright Sunshine - Monthly							
S'toon Area	Date	Site	S'toon CRS	Date	S'toon Area	Date	Site	S'toon CRS	Date	S'toon Airport	Date	S'toon CRS**	Date	Hours	Year	No. of Days	Year	
37.2	27/1936	SE	35.0	30/1988	178.0	1977	SWT	145.3	1977	132	17 ^{SW}	1965	108	1991	389.3	1980	31	1966*
-12.8	06/1907	SE	-10.0	02/1967	0.0	02,02,1988	SWT, K, SC	0.2	2002						153.0	1996	24	2006

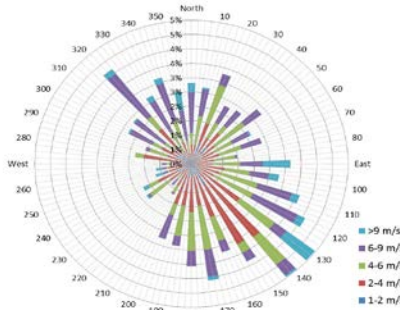
**1975 forward * more than one year

Notable Events for CRS Saskatoon - May						Saskatoon Area Stations			Glossary	
Element	Type	Day	New Record	Old Record	Year	Station	Location	Operational Period	Symbol	Description
Temperature	Highest Maximum Daily	6	30.8	28.5	1992	SM	NWMP	c. 1892-1901	T	Trace of precipitation
	Highest Minimum Daily	6	12.8	11.5	1993	SE	Eby	1901-1941	Normal	30 year average beginning with the decade
	Highest Average Daily	6	21.8	19.5	1993	US	Univ. of Sask.	1915-1964	SOG	Depth of snow-on-the-ground in cm
Precipitation	Highest Daily	7	19.8	7.4	1997	S	Saskatoon	1941-1942	na	not available
						SA	Saskatoon A	1942 -	Degree-days	
						NRC	Nat. Res. Council	1952-1966	Tm	Mean Temperature
						SRC	Sask. Res. Council	1963-	Growing	(Tm-5°C); if Tm ≤ 5°C then GDD = 0
						SWT	S'toon Water Treatment Plant	1974 -	Heating	(18°C-Tm); if Tm ≤ 18°C then HDD = 0
						SC	S'toon Central Ave	1974-1989	Cooling	(Tm-18°C); if Tm ≥ 18°C then CDD = 0
						S1	Saskatoon 1	1976-1978	Extreme Cooling	(Tm-24°C); if Tm ≥ 24°C then CDD = 0
						S2	Saskatoon 2	1977-1990	4 May 2017 Spring maintenance (Geonor precipitation holding bucket emptied & re-assembled; dessicant in radition sensors changed) 11 May 2017 Spring maintenance (replaced speed bearings in RM Young anemometer) 18 May 2017 New Fence installed on East Side of Compound 18 May 2017 daily temperatures, 27 May Maximum daily wind speed are manual calculations due to datalogger error.	
					K	S'toon Kernen Farm	1993-2004			
					KCS	S'toon Kernen Farm CS	1996-			
					RCS	Environment Canada	2008-			
					SF	Sutherland Forestry	1943-1970			

1/2 hr Maximum Wind Speed and Direction Saskatoon May 2017



10 minute Average Wind Speed and Direction Saskatoon May 2017



SRC proudly recognizes the following CRS supporters:



Agriculture and Agri-Food Canada / Agriculture et Agroalimentaire Canada

