



SRC CLIMATE REFERENCE STATION DAILY DATA REPORT

SASKATOON STATION 4057180

52°09' N 106°36' W 497 m asl Estab. 1963

Preliminary **NOVEMBER 2014**

Day	Temperature						Degree-days			Precipitation			Relative Humidity		Station Pressure (sea level)	
	Max	Normal Max	Min	Normal Min	Mean	Normal Mean	Growing	Heating	Cooling	Weighing Gauge	Notes	Snow-on-Ground 0900h	Max ½ hr Avg	Min ½ hr Avg	Max ½ hr Avg	Min ½ hr Avg
	°C	1981-2010	°C	1981-2010	°C	1981-2010	5°C base	18°C base	18°C base	mm		cm	%	%	mbar	mbar
1	7.7	3.0	-0.4	-5.1	3.7	-1.1	0.0	14.3	0.0	0.0			93	71	1009	1003
2	3.1	3.2	0.4	-5.7	1.8	-1.2	0.0	16.2	0.0	3.0	snow/rain		99	83	1009	1005
3	3.0	3.1	0.1	-5.0	1.6	-0.9	0.0	16.4	0.0	1.0	snow		98	88	1013	1004
4	4.1	3.8	0.2	-4.2	2.2	-0.2	0.0	15.8	0.0	7.8			96	75	1013	1006
5	5.7	4.3	-0.3	-6.0	2.7	-0.9	0.0	15.3	0.0	3.6			99	73	1022	1008
6	9.1	2.8	-2.9	-6.6	3.1	-1.9	0.0	14.9	0.0	0.3			98	67	1022	994
7	7.7	1.5	-1.3	-7.1	3.2	-2.8	0.0	14.8	0.0	2.6			95	63	1021	994
8	-1.2	0.6	-10.0	-6.8	-5.6	-3.1	0.0	23.6	0.0	0.0			95	45	1021	1015
9	-9.9	-0.5	-13.7	-8.9	-11.8	-4.7	0.0	29.8	0.0	0.2			83	64	1016	1012
10	-10.5	0.7	-13.5	-8.7	-12.0	-4.0	0.0	30.0	0.0	0.0			84	68	1030	1017
11	-8.6	0.3	-12.9	-9.0	-10.8	-4.3	0.0	28.8	0.0	0.0			86	71	1038	1030
12	-9.7	0.7	-13.1	-9.0	-11.4	-4.2	0.0	29.4	0.0	0.0			83	70	1038	1034
13	-10.4	1.3	-15.6	-8.2	-13.0	-3.4	0.0	31.0	0.0	0.0			84	64	1034	1024
14	-9.9	1.1	-18.3	-8.5	-14.1	-3.7	0.0	32.1	0.0	0.0			89	68	1024	1022
15	-6.8	1.0	-12.5	-8.9	-9.7	-4.0	0.0	27.7	0.0	0.0			82	66	1025	1010
16	-6.8	0.3	-10.2	-9.7	-8.5	-4.7	0.0	26.5	0.0	0.0			92	60	1026	1010
17	-8.2	-1.9	-13.6	-9.0	-10.9	-5.4	0.0	28.9	0.0	0.0			92	60	1026	1013
18	-6.1	-0.8	-13.5	-8.7	-9.8	-4.8	0.0	27.8	0.0	0.0			85	73	1018	1006
19	-7.7	-1.0	-14.4	-8.9	-11.1	-5.0	0.0	29.1	0.0	0.0			89	66	1020	1016
20	-1.6	-1.2	-16.8	-9.8	-9.2	-5.5	0.0	27.2	0.0	0.0			89	80	1016	1000
21	3.6	-3.4	-2.4	-11.6	0.6	-7.5	0.0	17.4	0.0	1.2	freezing rain/snow		97	82	1000	996
22	-0.5	-2.4	-9.7	-12.3	-5.1	-7.4	0.0	23.1	0.0	3.3	snow		98	90	999	986
23	-8.0	-3.8	-14.3	-12.3	-11.2	-8.1	0.0	29.2	0.0	0.0			92	82	1010	998
24	-5.6	-4.4	-15.5	-12.7	-10.6	-8.6	0.0	28.6	0.0	0.0			92	80	1014	1010
25	-6.3	-5.0	-15.7	-13.5	-11.0	-9.3	0.0	29.0	0.0	0.0			95	81	1024	1008
26	-14.2	-5.4	-17.1	-14.0	-15.7	-9.7	0.0	33.7	0.0	0.0			86	70	1028	1023
27	-10.0	-5.7	-16.3	-13.3	-13.2	-9.6	0.0	31.2	0.0	0.0			92	85	1022	1014
28	-14.5	-3.9	-19.9	-12.8	-17.2	-8.4	0.0	35.2	0.0	9.8	Snow		87	82	1014	1002
29	-19.8	-3.5	-25.9	-11.6	-22.9	-7.6	0.0	40.9	0.0	2.0		5	82	70	1012	1003
30	-23.0	-3.7	-26.3	-12.5	-24.7	-8.1	0.0	42.7	0.0	0.0		5	77	63	1026	1012
Total							0.0	790.6	0.0	34.8			Extreme / Date	Extreme / Date	Extreme / Date	Extreme / Date
Avg	-5.2	-0.6	-11.5	-9.4	-8.4	-5.0	1981-2010 Normal			13.4	Normal					
Extreme	9.1		-26.3				2.9	690.1	0.0	450.5	Cumulative		99	45	1038	986
Date	6		30							342.6	Cumulative Norm		2	8	11	22

Note: Red numbers indicate manual calculation; Red cell indicate data not available

SRC proudly recognizes the following CRS supporters:

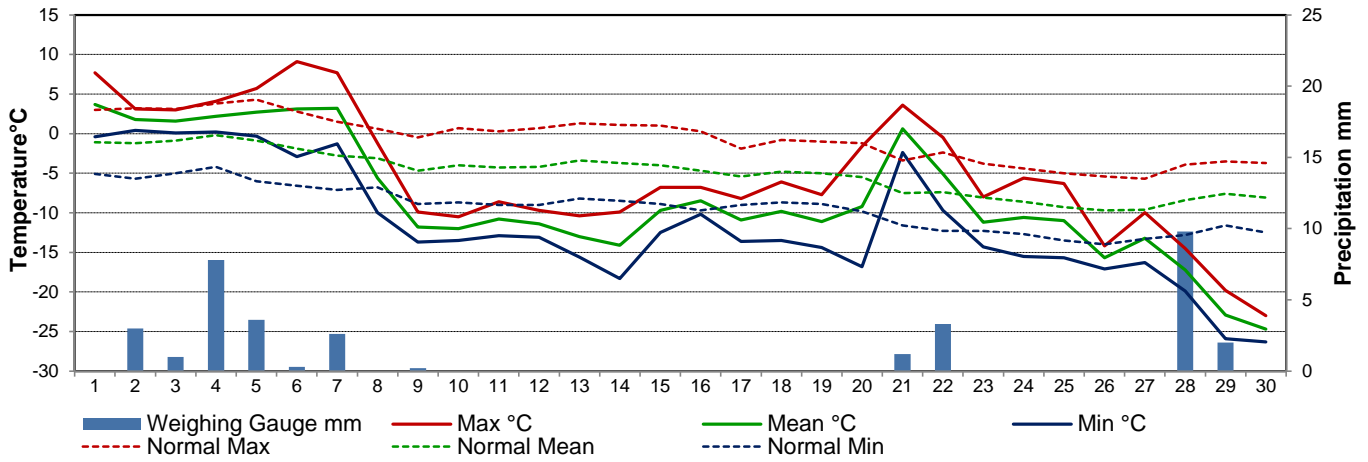


Agriculture and Agri-Food Canada

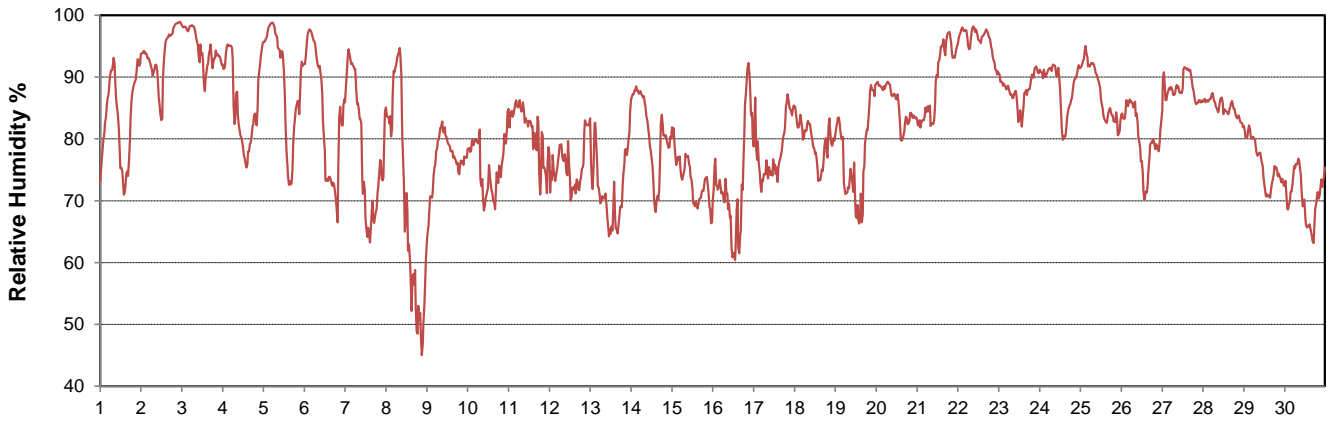
Agriculture et Agroalimentaire Canada



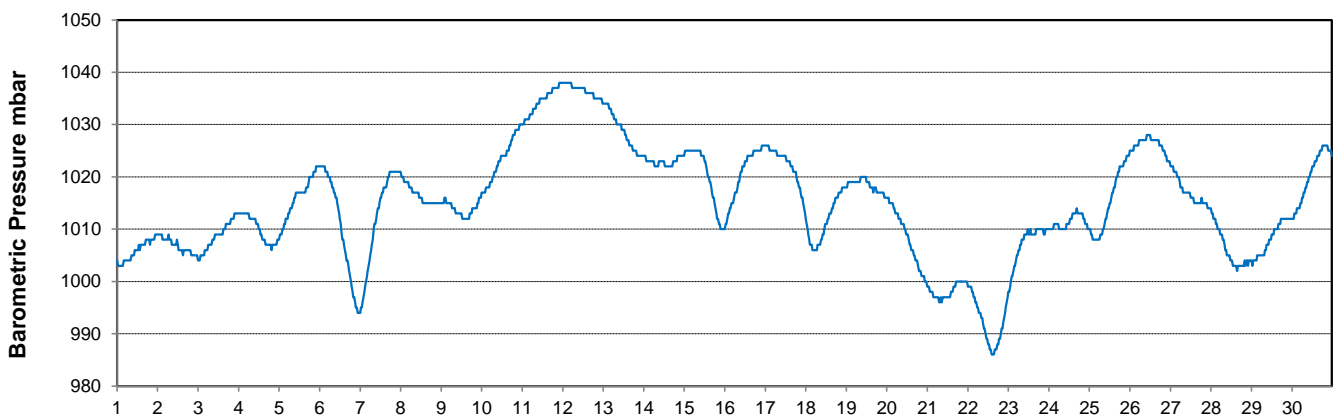
Temperature and Precipitation for November 2014



Relative Humidity for November 2014



Barometric Pressure Corrected to Sea Level for November 2014





SRC CLIMATE REFERENCE STATION DAILY DATA REPORT

SASKATOON STATION 4057180

52°09' N 106°36' W 497 m asl Estab. 1963

Preliminary **NOVEMBER 2014**

Day	Wind Gust			Soil Temperatures at 0900hrs								Soil Moisture 30 cm	Radiation				
	Max	Direction	Time	Surface	5 cm	10 cm	20 cm	50 cm	100 cm	150 cm	300 cm		0900hrs	Bright Sunshine	Possible	% Possible	Global
	km/h			°C	°C	°C	°C	°C	°C	°C	°C	%	hours	hours		MJ/m ²	MJ/m ²
1	42.8	NNE	19:37	-0.5	2.0	3.5	4.5	7.0	9.0	9.5	10.0	16	6.7	9.6	69.9	5.8	1.4
2	38.6	ENE	9:25	2.0	3.5	4.0	5.0	6.5	8.5	9.5	10.0	16	0.0	9.5	0.0	0.9	0.8
3	35.2	NW	11:47	0.0	2.5	3.5	4.5	6.5	8.5	9.5	10.0	17.1	0.0	9.5	0.0	2.3	2.0
4	32.6	SE	19:17	0.0	2.5	3.5	4.0	6.5	8.5	9.5	10.0	17	2.4	9.4	25.5	3.5	2.4
5	34.7	WNW	13:40	0.0	3.0	3.5	4.5	6.5	8.5	9.0	10.0	20.9	5.0	9.3	53.5	4.9	1.6
6	44.8	SE	11:12	-1.5	1.5	2.5	3.5	6.5	8.0	9.0	10.0	20.1	2.3	9.3	24.8	3.5	2.7
7	54.1	N	12:22	2.0	4.0	4.5	4.5	6.0	8.0	9.0	10.0	21.4	0.1	9.2	1.1	1.9	1.7
8	32.3	NNW	21:20	-4.5	2.0	2.5	3.5	6.0	8.0	9.0	10.0	20.6	0.9	9.2	9.8	3.1	2.5
9	27.8	N	20:55	-13.5	0.5	1.5	2.5	5.5	8.0	9.0	10.0	19	0.5	9.1	5.5	3.0	2.6
10	35.5	NNW	10:12	-13.0	0.0	0.5	2.0	5.0	7.5	9.0	9.5	17.2	1.1	9.1	12.2	3.2	2.6
11	29.6	NNE	14:47	-11.0	-1.0	0.0	1.0	4.5	7.5	8.5	9.5	15.4	0.0	9.0	0.0	2.7	2.4
12	33.4	WNW	12:59	-10.5	-1.0	-0.5	1.0	4.5	7.5	8.5	9.5	14.3	0.0	8.9	0.0	2.4	2.1
13	22.6	W	12:45	-11.5	-1.5	-1.0	0.5	4.0	7.0	8.5	9.5	13.8	1.6	8.9	18.0	2.8	2.3
14	29.2	N	20:42	-18.5	-4.0	-2.5	-0.5	3.5	7.0	8.5	9.5	13.1	8.0	8.8	90.6	6.0	1.3
15	45.2	W	15:56	-12.5	-4.0	-3.0	-1.5	3.0	7.0	8.0	9.5	12.6	3.4	8.8	38.7	4.1	2.6
16	56.1	N	11:01	-8.5	-4.0	-3.5	-2.0	2.5	6.5	8.0	9.5	12.2	4.8	8.7	55.0	3.9	1.9
17	34.2	NNW	5:48	-9.5	-4.0	-3.5	-2.0	2.5	6.5	8.0	9.5	11.9	1.7	8.7	19.6	3.2	2.5
18	51.9	NNW	14:18	-8.5	-4.0	-3.5	-2.0	2.0	6.0	7.5	9.5	11.6	1.5	8.6	17.4	3.0	2.2
19	32.9	NW	2:39	-9.0	-4.0	-3.5	-2.0	2.0	6.0	7.5	9.5	11.5	2.2	8.6	25.6	2.9	2.2
20	25.4	S	10:33	-10.0	-5.0	-4.5	-3.0	1.5	5.5	7.5	9.0	11.1	0.3	8.5	3.5	2.3	2.0
21	24.7	WSW	10:26	-1.0	-2.5	-2.5	-2.0	2.0	5.5	7.0	9.0	11.6	0.0	8.5	0.0	0.8	0.7
22	52.8	NE	19:01	-3.0	-1.0	-1.0	-1.0	2.0	5.5	7.0	9.0	12.3	0.0	8.4	0.0	1.3	1.1
23	43.4	NNE	1:05	-11.5	-1.5	-1.0	-0.5	2.0	5.0	7.0	9.0	12	0.5	8.4	6.0	3.0	2.6
24	32.4	NW	13:36	-11.0	-2.0	-1.5	-1.0	2.0	5.0	7.0	9.0	12	1.7	8.4	20.4	3.1	1.8
25	34.3	NE	9:28	-11.0	-1.5	-1.5	-0.5	2.0	5.0	6.5	9.0	11.9	1.7	8.3	20.5	3.5	2.3
26	19.8	SSE	14:56	-17.0	-2.0	-1.5	-1.0	2.0	5.0	6.5	9.0	11.8	6.5	8.3	78.7	4.3	1.7
27	46.9	ENE	22:09	-13.0	-2.5	-2.0	-1.0	1.5	5.0	6.5	8.5	11.6	0.0	8.2	0.0	1.7	1.5
28	41.5	E	9:02	-15.0	-2.5	-2.0	-1.0	1.5	5.0	6.5	8.5	11.1	0.0	8.2	0.0	1.6	1.4
29	34.4	WSW	20:07	-22.0	-2.0	-1.5	-1.0	1.5	4.5	6.5	8.5	11	4.9	8.2	60.1	3.8	1.7
30	41.7	WNW	13:58	-26.5	-2.0	-1.5	-1.0	1.5	4.5	6.0	8.5	10.6	7.6	8.1	93.7	4.5	1.3
Total													65.4	263.60	24.8	93.0	57.9
Mean				-9.0	-1.0	-0.4	0.6	3.7	6.6	8.0	9.4	14.3	1981-2010 Normal for Radiation				
Extreme	56.1	N	11:01	1971-2000 Normal for Soil Temperatures									97.0	270.3	35.9	127.2	63.8
Date	16			-2.2	-1.7	-0.5	3.0	5.6	6.8	8.1		No. of Bright Sunshine days = 22					

Note: Red numbers indicate manual calculation

SRC proudly recognizes the following CRS supporters:

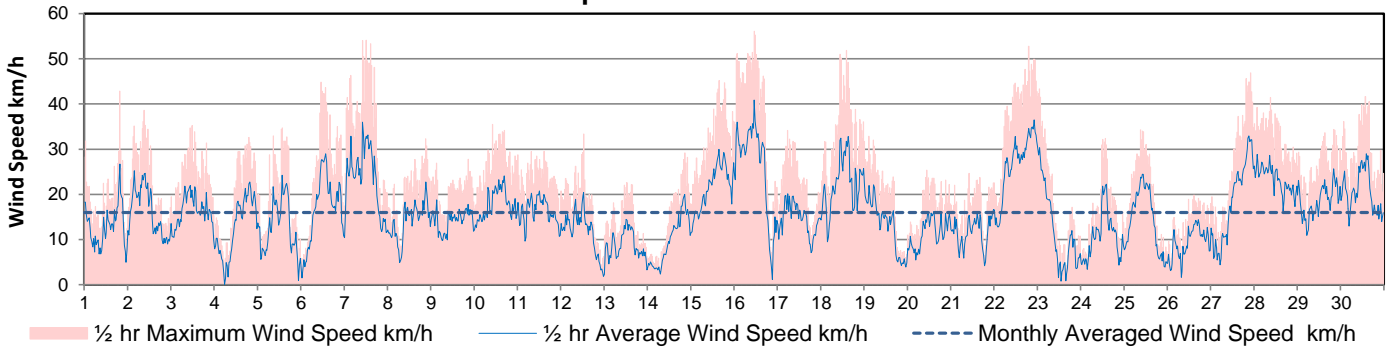


Agriculture and Agri-Food Canada

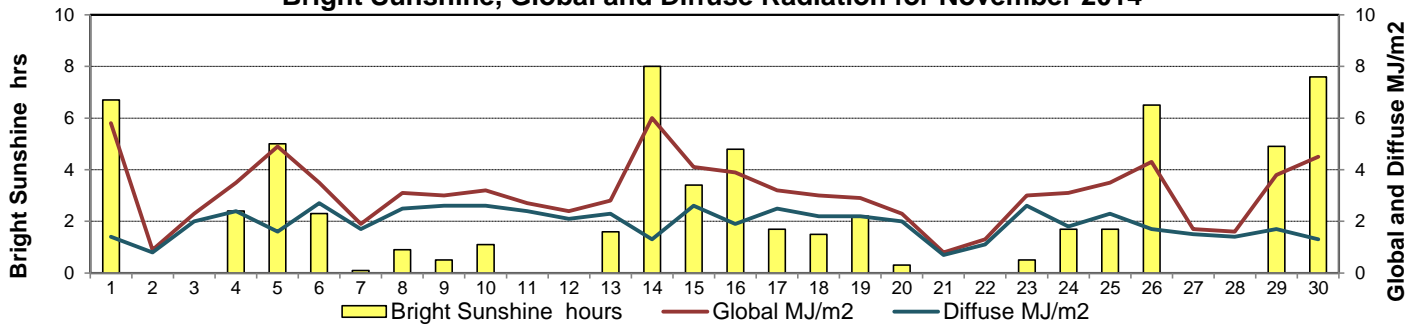
Agriculture et Agroalimentaire Canada



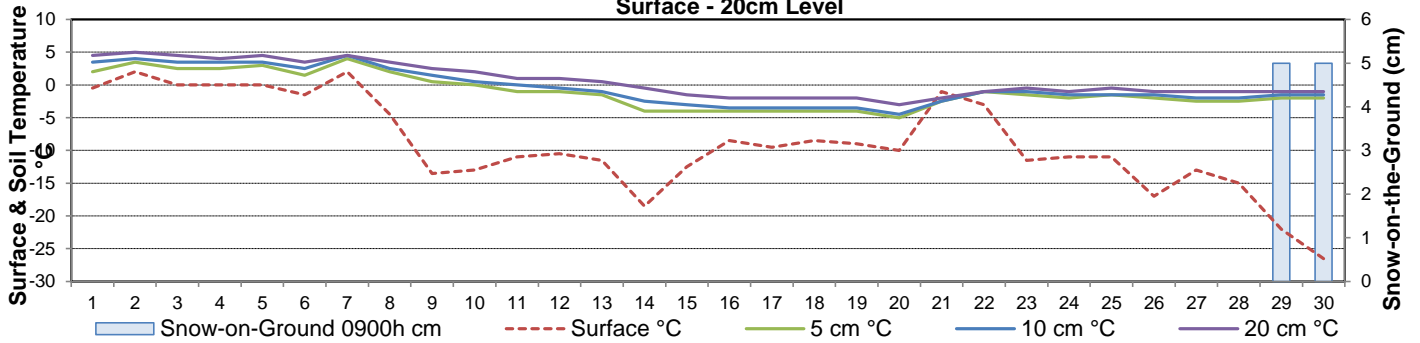
Wind Speed for November 2014



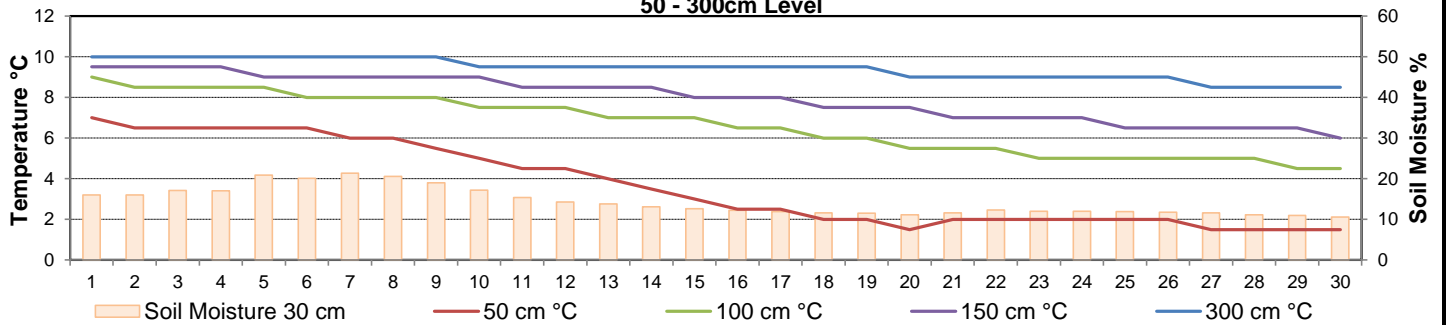
Bright Sunshine, Global and Diffuse Radiation for November 2014



**Soil Temperatures for November 2014
Surface - 20cm Level**



**Soil Temperatures for November 2014
50 - 300cm Level**





SRC CLIMATE REFERENCE STATION DAILY DATA REPORT

SASKATOON STATION 4057180

52°09' N 106°36' W 497 m asl Estab. 1963

Preliminary **NOVEMBER 2014**

Extreme Records for November

Max/Min Temperature °C			Precipitation - Monthly mm				Wind Monthly km/h				CRS Bright Sunshine - Monthly						
S'toon Area	Date	Site	S'toon CRS	Date	S'toon Area	Date	Site	S'toon CRS	Date	S'toon Airport	Date	S'toon CRS**	Date	Hours	Year	No. of Days	Year
21.7	03/1903	SE	19.4	04/1975	57.3	1940	SE	48.2	1973	100 ^W	17/1976	101	1976	188.5	1976	30	1976
-39.4	30/1893	SM	-33.5	24/1985	0.0	2002*	SWT*	0.4	2009					37.2	1972	10	1972

**1975 forward * more than one year

Notable Events for CRS Saskatoon - November						Saskatoon Area Stations			Glossary	
Element	Type	Day	New Record	Old Record	Year	Site	Operational Period	Code	Description	
Temperature	Lowest Maximum Temperature	30	-23.0	-22.2	1966	SM	NWMP c. 1892-1901	T	Trace of precipitation	
						SE	Eby 1901-1941	Normal	30 year average beginning with the decade	
						US	Univ. of Sask. 1915-1964	SOG	Depth of snow-on-the-ground in cm	
						S	Saskatoon 1941-1942	na	not available	
						SA	Saskatoon A 1942 -	Degree-days		
Precipitation	Daily	7	2.6	2.6	1983	NRC	Nat. Res. Council 1952-1966	Tm	Mean Temperature	
		28	9.8	3.6	1978	SRC	Sask. Res. Council 1963-	Growing	(Tm-5°C); if Tm ≤ 5°C then GDD = 0	
						SWT	S'toon Water Treatment Plant 1974 -	Heating	(18°C-Tm); if Tm ≤ 18°C then HDD = 0	
						SC	S'toon Central Ave 1974-1989	Cooling	(Tm-18°C); if Tm ≥ 18°C then CDD = 0	
						S1	Saskatoon 1 1976-1978	Extreme Cooling	(Tm-24°C); if Tm ≥ 24°C then CDD = 0	
						S2	Saskatoon 2 1977-1990			
						K	S'toon Kernen Farm 1993-2004			
						KCS	S'toon Kernen Farm CS 1996-			
						RCS	Environment Canada 2008-			
						SF	Sutherland Forestry 1943-1970			

Summary

Winter snowpack started 22 Nov 2014

Automated snow depth sensor malfunctioned

SRC proudly recognizes the following CRS supporters:

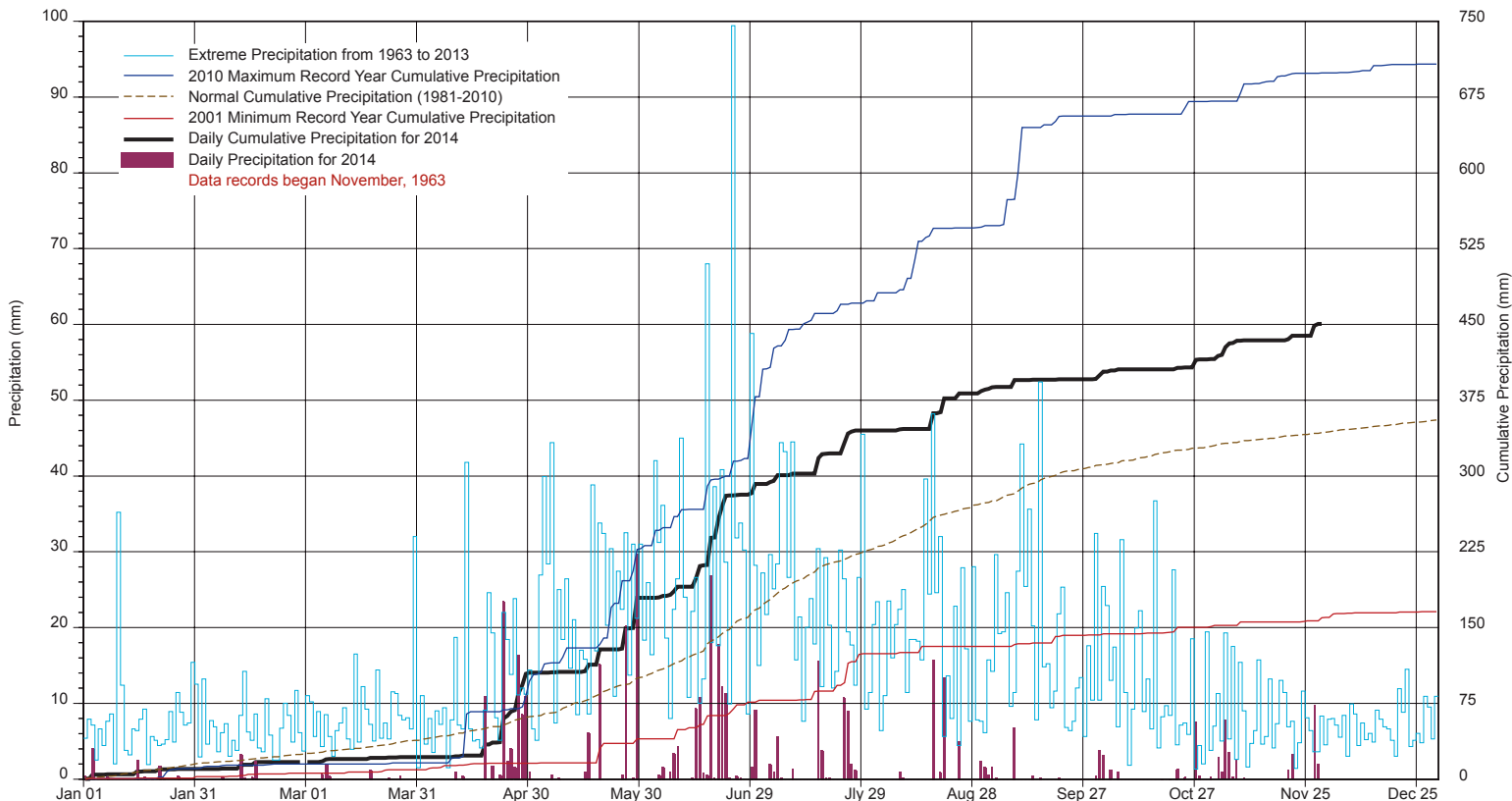


Agriculture and Agri-Food Canada

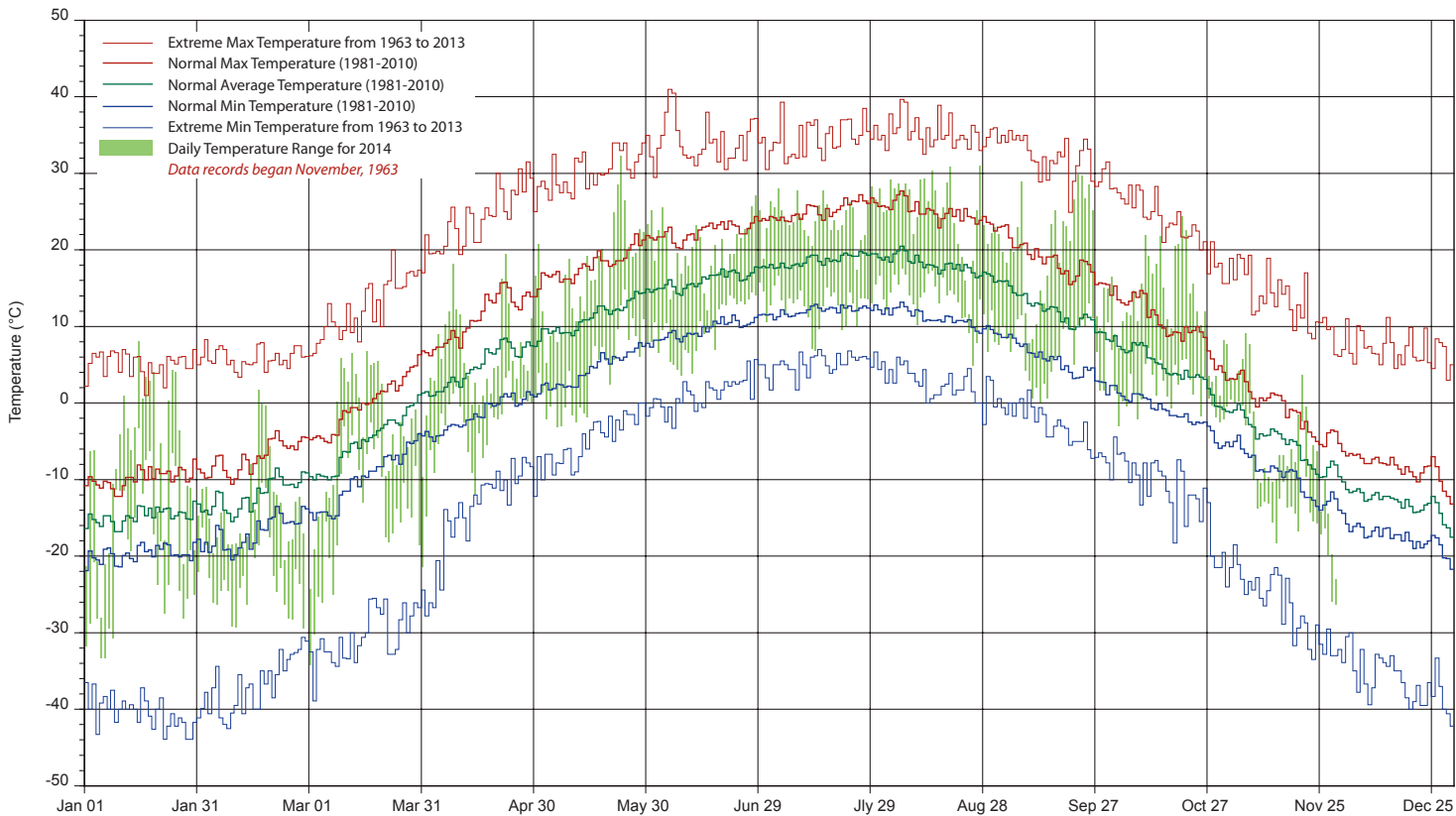
Agriculture et Agroalimentaire Canada



SASKATCHEWAN RESEARCH COUNCIL SASKATOON CLIMATE REFERENCE STATION 2014 PRECIPITATION AND NORMALS



2014 TEMPERATURES AND NORMALS



SRC proudly recognizes the following CRS supporters:



Agriculture and
Agri-Food Canada

Agriculture et
Agroalimentaire Canada

