



SRC CLIMATE REFERENCE STATION DAILY DATA REPORT

SASKATOON STATION 4057180

52°09' N 106°36' W 497 m asl Estab. 1963

Preliminary NOVEMBER 2015

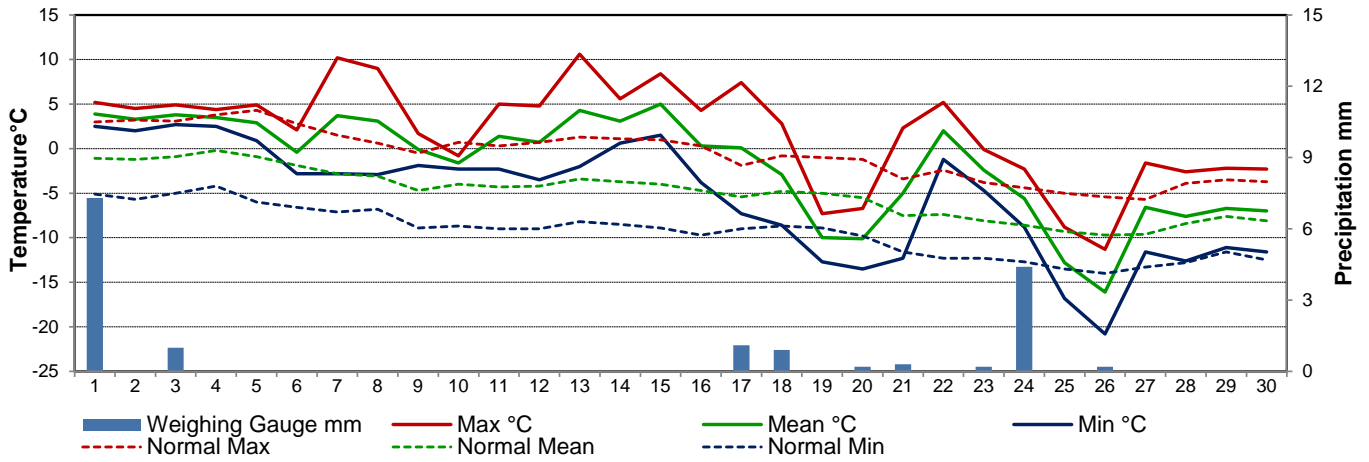
Day	Temperature						Degree-days			Precipitation			Relative Humidity		Station Pressure (sea level)	
	Max	Normal Max	Min	Normal Min	Mean	Normal Mean	Growing	Heating	Cooling	Weighing Gauge	Notes	Snow-on-Ground 0900h	Max ½ hr Avg	Min ½ hr Avg	Max ½ hr Avg	Min ½ hr Avg
	°C	1981-2010	°C	1981-2010	°C	1981-2010	5°C base	18°C base	18°C base	mm		cm	%	%	mbar	mbar
1	5.2	3.0	2.5	-5.1	3.9	-1.1	0.0	14.1	0.0	7.3		0	96	81	1005	998
2	4.5	3.2	2.0	-5.7	3.3	-1.2	0.0	14.7	0.0	0.0		0	96	85	1012	1005
3	4.9	3.1	2.7	-5.0	3.8	-0.9	0.0	14.2	0.0	1.0		0	94	82	1015	1012
4	4.4	3.8	2.5	-4.2	3.5	-0.2	0.0	14.5	0.0	0.0		0	95	81	1015	1010
5	4.9	4.3	0.9	-6.0	2.9	-0.9	0.0	15.1	0.0	0.0		0	95	70	1012	1007
6	2.1	2.8	-2.8	-6.6	-0.4	-1.9	0.0	18.4	0.0	0.0		0	88	66	1016	1013
7	10.2	1.5	-2.8	-7.1	3.7	-2.8	0.0	14.3	0.0	0.0		0	93	56	1013	1003
8	9.0	0.6	-2.9	-6.8	3.1	-3.1	0.0	14.9	0.0	0.0		0	98	62	1006	1003
9	1.7	-0.5	-1.9	-8.9	-0.1	-4.7	0.0	18.1	0.0	0.0		0	98	92	1015	1006
10	-0.8	0.7	-2.3	-8.7	-1.6	-4.0	0.0	19.6	0.0	0.0		0	97	84	1014	1011
11	5.0	0.3	-2.3	-9.0	1.4	-4.3	0.0	16.6	0.0	0.0		0	94	60	1011	1001
12	4.8	0.7	-3.5	-9.0	0.7	-4.2	0.0	17.3	0.0	0.0		0	85	44	1014	1008
13	10.6	1.3	-2.0	-8.2	4.3	-3.4	0.0	13.7	0.0	0.0		0	79	49	1007	996
14	5.6	1.1	0.6	-8.5	3.1	-3.7	0.0	14.9	0.0	0.0		0	82	57	1009	1003
15	8.4	1.0	1.5	-8.9	5.0	-4.0	0.0	13.0	0.0	0.0		0	84	57	1008	996
16	4.3	0.3	-3.8	-9.7	0.3	-4.7	0.0	17.7	0.0	0.0	light drizzle	0	95	68	1007	995
17	7.4	-1.9	-7.3	-9.0	0.1	-5.4	0.0	17.9	0.0	1.1	light rain	0	92	41	1007	981
18	2.8	-0.8	-8.6	-8.7	-2.9	-4.8	0.0	20.9	0.0	0.9	rain/snow	9	99	72	1007	979
19	-7.3	-1.0	-12.7	-8.9	-10.0	-5.0	0.0	28.0	0.0	0.0		7	91	74	1017	1007
20	-6.7	-1.2	-13.5	-9.8	-10.1	-5.5	0.0	28.1	0.0	0.2	light snow	7	91	79	1025	1017
21	2.3	-3.4	-12.3	-11.6	-5.0	-7.5	0.0	23.0	0.0	0.3	light snow	6	89	72	1022	1001
22	5.2	-2.4	-1.2	-12.3	2.0	-7.4	0.0	16.0	0.0	0.0		0	80	59	1010	1000
23	-0.1	-3.8	-4.7	-12.3	-2.4	-8.1	0.0	20.4	0.0	0.2	snow	0	93	69	1015	1011
24	-2.3	-4.4	-8.8	-12.7	-5.6	-8.6	0.0	23.6	0.0	4.4	snow	6	97	85	1020	1011
25	-8.8	-5.0	-16.8	-13.5	-12.8	-9.3	0.0	30.8	0.0	0.0		10	88	72	1026	1020
26	-11.3	-5.4	-20.8	-14.0	-16.1	-9.7	0.0	34.1	0.0	0.2		10	88	75	1032	1025
27	-1.6	-5.7	-11.6	-13.3	-6.6	-9.6	0.0	24.6	0.0	0.0		9	79	60	1025	1017
28	-2.6	-3.9	-12.6	-12.8	-7.6	-8.4	0.0	25.6	0.0	0.0		9	91	63	1023	1020
29	-2.2	-3.5	-11.1	-11.6	-6.7	-7.6	0.0	24.7	0.0	0.0		9	88	62	1020	1015
30	-2.3	-3.7	-11.6	-12.5	-7.0	-8.1	0.0	25.0	0.0	0.0		9	89	64	1015	1011
Total							0.0	593.8	0.0	15.6			Extreme / Date	Extreme / Date	Extreme / Date	Extreme / Date
Avg	1.9	-0.6	-5.5	-9.4	-1.8	-5.0	1981-2010 Normal			13.4	Normal					
Extreme Date	10.6		-20.8				2.9	690.1	0.0	336.7	Cumulative		99	41	1032	979
	13		26							342.6	Cumulative Norm		18	17	26	18

Note: Red numbers indicate manual calculation; Red cell indicate data not available

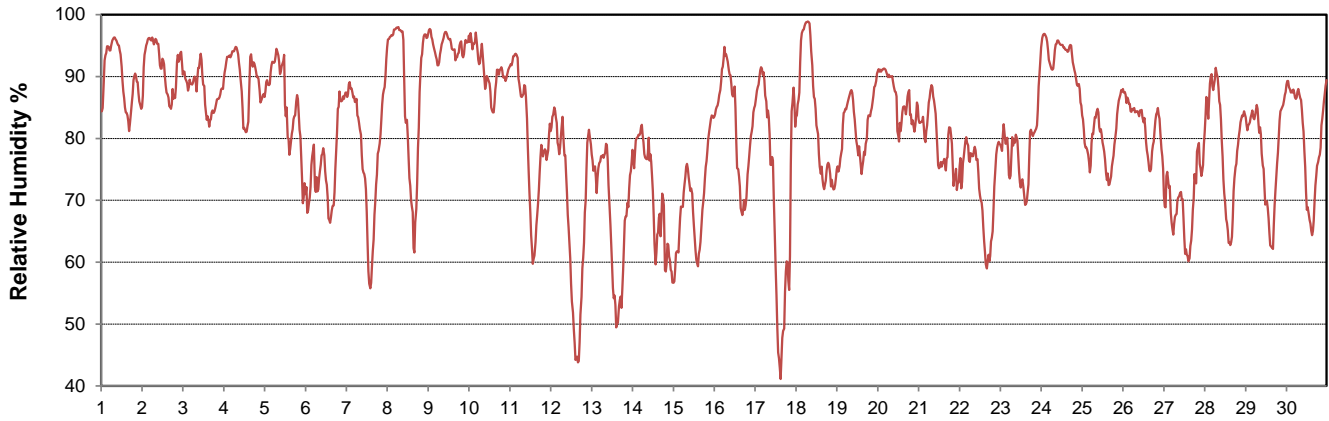
SRC proudly recognizes the following CRS supporters:



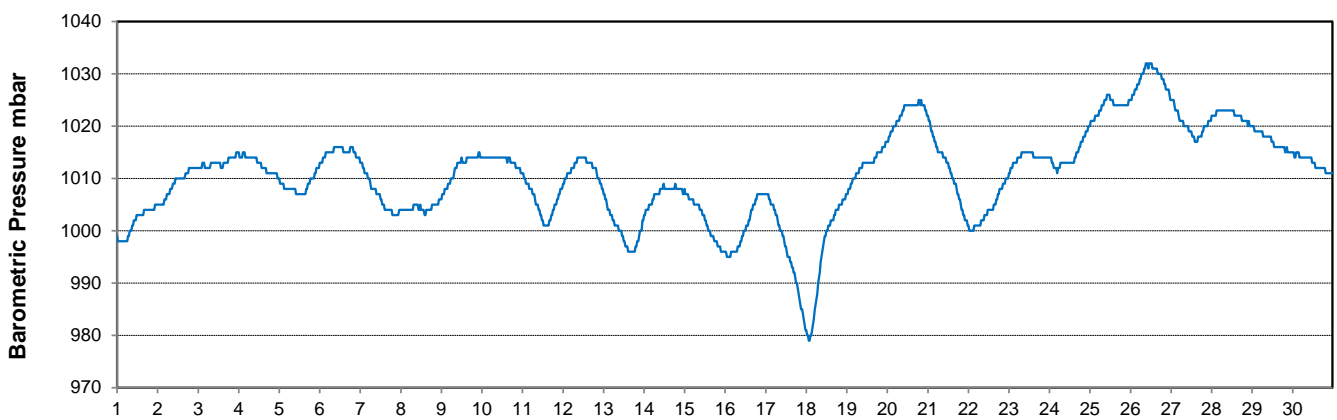
### Temperature and Precipitation for November 2015



### Relative Humidity for November 2015



### Barometric Pressure Corrected to Sea Level for November 2015





# SRC CLIMATE REFERENCE STATION DAILY DATA REPORT

**SASKATOON STATION 4057180**

52°09' N 106°36' W 497 m asl Estab. 1963

Preliminary **NOVEMBER 2015**

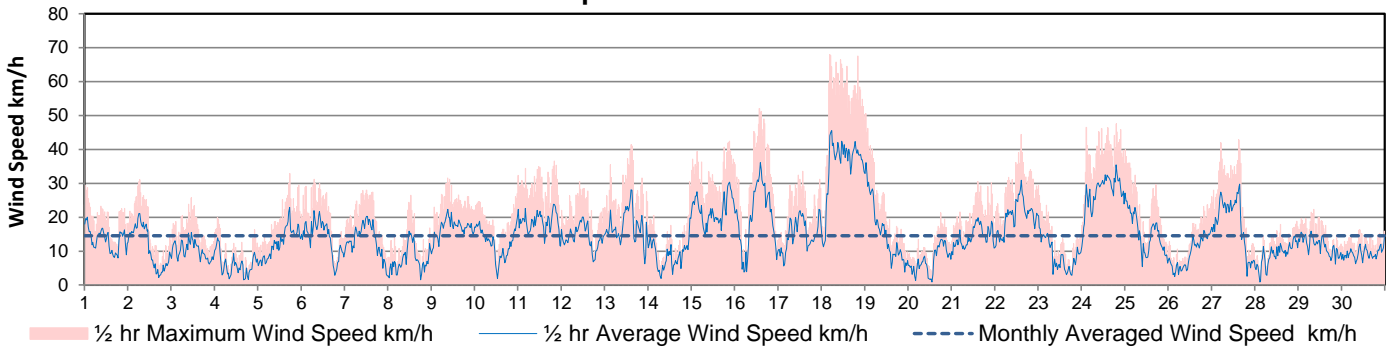
Day	Wind Gust			Soil Temperatures at 0900hrs								Soil Moisture 30 cm	Radiation				
	Max	Direction	Time	Surface	5 cm	10 cm	20 cm	50 cm	100 cm	150 cm	300 cm		0900hrs	Bright Sunshine	Possible	% Possible	Global
	km/h			°C	°C	°C	°C	°C	°C	°C	°C	%	hours	hours		MJ/m <sup>2</sup>	MJ/m <sup>2</sup>
1	29.4	SE	0:53	2.5	4.5	5.0	5.5	7.0	8.5	9.5	10.5	26	0.0	9.6	0.0	2.0	1.7
2	31.0	NE	6:33	2.0	4.5	5.0	5.5	7.0	8.5	9.5	10.0	26	0.0	9.6	0.0	2.0	1.7
3	25.8	SE	11:09	3.0	4.5	5.0	5.5	7.0	8.5	9.5	10.0	26	0.0	9.5	0.0	1.4	1.2
4	19.9	SE	1:50	3.0	4.5	5.0	5.5	7.0	8.5	9.0	10.0	27	0.0	9.4	0.0	1.4	1.2
5	32.9	NW	17:51	2.5	4.0	5.0	5.5	7.0	8.5	9.0	10.0	27	2.6	9.4	27.7	4.8	3.0
6	31.2	WNW	7:14	-1.0	3.0	4.0	5.0	6.5	8.0	9.0	10.0	26	2.1	9.3	22.6	4.5	3.0
7	27.9	SSW	12:23	-0.5	1.5	2.5	3.5	6.5	8.0	9.0	10.0	26	7.5	9.3	81.1	6.1	1.7
8	26.5	SE	12:33	-3.0	1.5	2.5	3.5	6.0	8.0	9.0	10.0	26	8.0	9.2	87.1	5.9	1.3
9	31.6	NNE	9:15	0.5	2.0	2.5	3.0	5.5	8.0	9.0	10.0	26	0.0	9.1	0.0	0.9	0.8
10	27.0	SSW	23:45	-2.0	1.5	2.0	3.0	5.5	7.5	9.0	10.0	26	0.0	9.1	0.0	1.3	1.1
11	36.5	NW	20:28	-1.5	1.0	2.0	2.5	5.0	7.5	8.5	10.0	26	6.3	9.0	69.8	5.5	1.6
12	30.5	W	14:37	-3.0	1.0	1.5	2.5	5.0	7.5	8.5	9.5	25	8.5	9.0	94.8	6.1	0.7
13	41.4	SW	10:07	-1.0	0.5	1.0	2.0	4.5	7.5	8.5	9.5	25	5.4	8.9	60.6	4.9	1.8
14	30.4	ESE	23:23	1.0	1.0	1.5	2.0	4.5	7.0	8.5	9.5	25	0.0	8.9	0.0	1.6	1.3
15	42.4	SE	21:04	1.0	1.5	2.0	2.5	4.5	7.0	8.0	9.5	25	6.4	8.8	72.6	5.1	1.6
16	52.1	NW	13:50	1.5	2.5	3.0	3.0	4.5	7.0	8.0	9.5	25	0.1	8.8	1.1	1.0	0.9
17	33.5	SW	13:41	-2.5	1.0	1.5	2.5	4.5	7.0	8.0	9.5	24	5.0	8.7	57.5	4.6	0.9
18	67.9	N	4:34	-2.5	1.0	1.5	2.0	4.5	7.0	8.0	9.5	25	0.8	8.7	9.2	2.8	2.1
19	50.5	NW	0:36	-13.0	0.5	1.0	2.0	4.0	6.5	8.0	9.5	23	6.0	8.6	69.8	5.8	1.4
20	21.3	WSW	18:16	-14.0	0.5	1.0	1.5	4.0	6.5	8.0	9.5	22	1.7	8.6	19.9	3.1	2.0
21	30.5	WSW	14:57	-9.0	0.0	0.5	1.5	3.5	6.5	7.5	9.0	22	6.0	8.5	70.5	5.1	2.2
22	44.4	WNW	14:53	-0.5	0.0	0.5	1.5	3.5	6.5	7.5	9.0	22	7.1	8.5	83.9	4.9	0.9
23	29.3	WNW	0:01	-6.0	0.0	0.5	1.0	3.5	6.0	7.5	9.0	22	4.3	8.4	51.1	3.5	2.0
24	47.5	N	19:08	-3.0	0.5	0.5	1.0	3.5	6.0	7.5	9.0	22	0.0	8.4	0.0	1.7	1.5
25	39.9	NNW	0:27	-17.0	0.0	0.5	1.0	3.5	6.0	7.5	9.0	22	1.1	8.3	13.2	2.6	2.0
26	24.1	SSW	23:59	-22.5	0.0	0.5	1.0	3.0	6.0	7.0	9.0	21	7.8	8.3	94.2	6.2	1.2
27	42.8	WSW	15:28	-8.5	0.0	0.5	1.0	3.0	6.0	7.0	9.0	21	7.7	8.2	93.4	4.7	1.2
28	18.8	SSW	23:24	-13.0	0.0	0.5	1.0	3.0	5.5	7.0	9.0	21	7.8	8.2	95.1	5.2	0.9
29	22.4	SW	8:37	-10.5	0.0	0.5	1.0	3.0	5.5	7.0	9.0	20	7.6	8.2	93.0	4.3	1.2
30	16.3	SSW	10:09	-12.0	0.0	0.5	1.0	3.0	5.5	7.0	8.5	19	7.7	8.1	94.7	4.5	0.8
Total													117.5	264.34	44.5	113.5	44.9
Mean				-4.3	1.4	2.0	2.6	4.8	7.1	8.2	9.5	23.9	1981-2010 Normal for Radiation				
Extreme	67.9	N	4:34	1971- 2000 Normal for Soil Temperatures									97.0	270.3	35.9	127.2	63.8
Date	18				-2.2	-1.7	-0.5	3.0	5.6	6.8	8.1		No. of Bright Sunshine days = 22				

Note: Red numbers indicate manual calculation

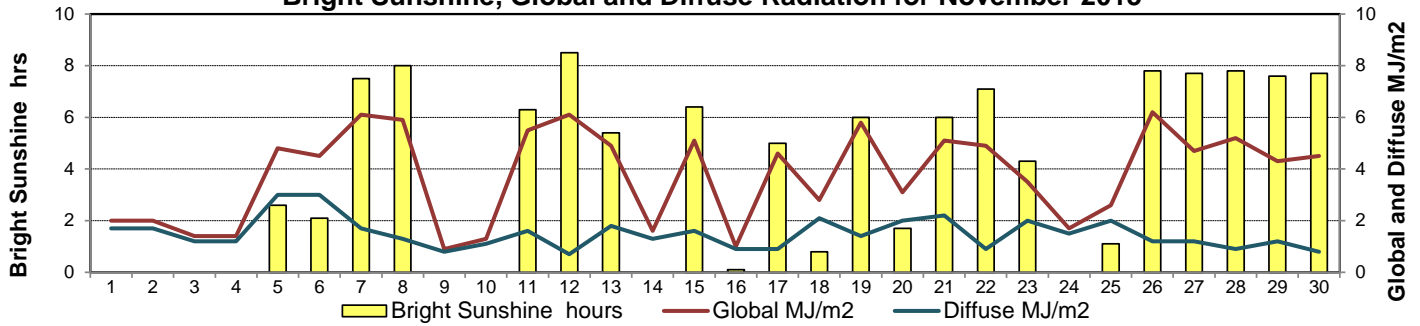
**SRC proudly recognizes the following CRS supporters:**



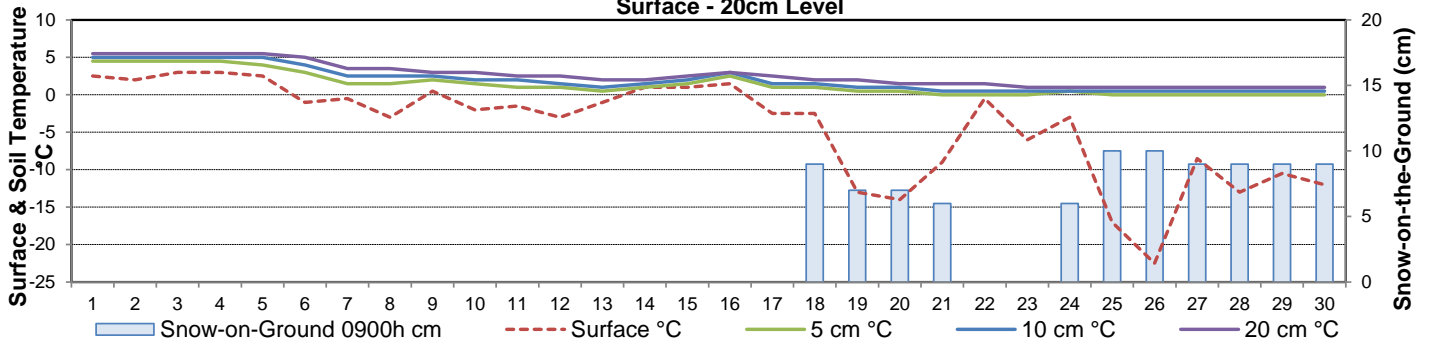
**Wind Speed for November 2015**



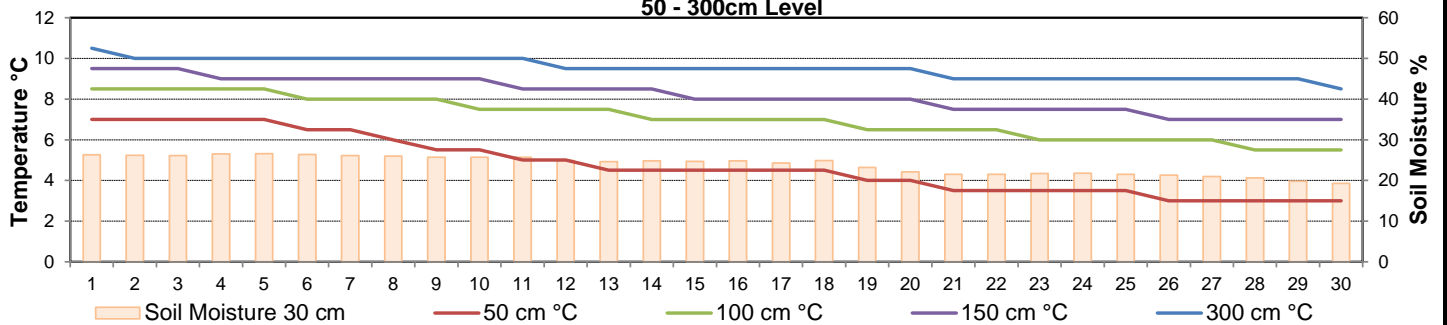
**Bright Sunshine, Global and Diffuse Radiation for November 2015**



**Soil Temperatures for November 2015  
Surface - 20cm Level**



**Soil Temperatures for November 2015  
50 - 300cm Level**





**SRC CLIMATE REFERENCE STATION DAILY DATA REPORT**  
**SASKATOON STATION 4057180**

52°09' N 106°36' W 497 m asl Estab. 1963

Preliminary **NOVEMBER 2015**

**Extreme Records for November**

Max/Min Temperature °C			Precipitation - Monthly mm				Wind Monthly km/h				CRS Bright Sunshine - Monthly						
S'toon Area	Date	Site	S'toon CRS	Date	S'toon Area	Date	Site	S'toon CRS	Date	S'toon Airport	Date	S'toon CRS**	Date	Hours	Year	No. of Days	Year
21.7	03/1903	SE	19.4	04/1975	57.3	1940	SE	48.2	1973	100 <sup>W</sup>	17/1976	101	1976	188.5	1976	30	1976
-39.4	30/1893	SM	-33.5	24/1985	0.0	2002*	SWT*	0.4	2009					37.2	1972	10	1972

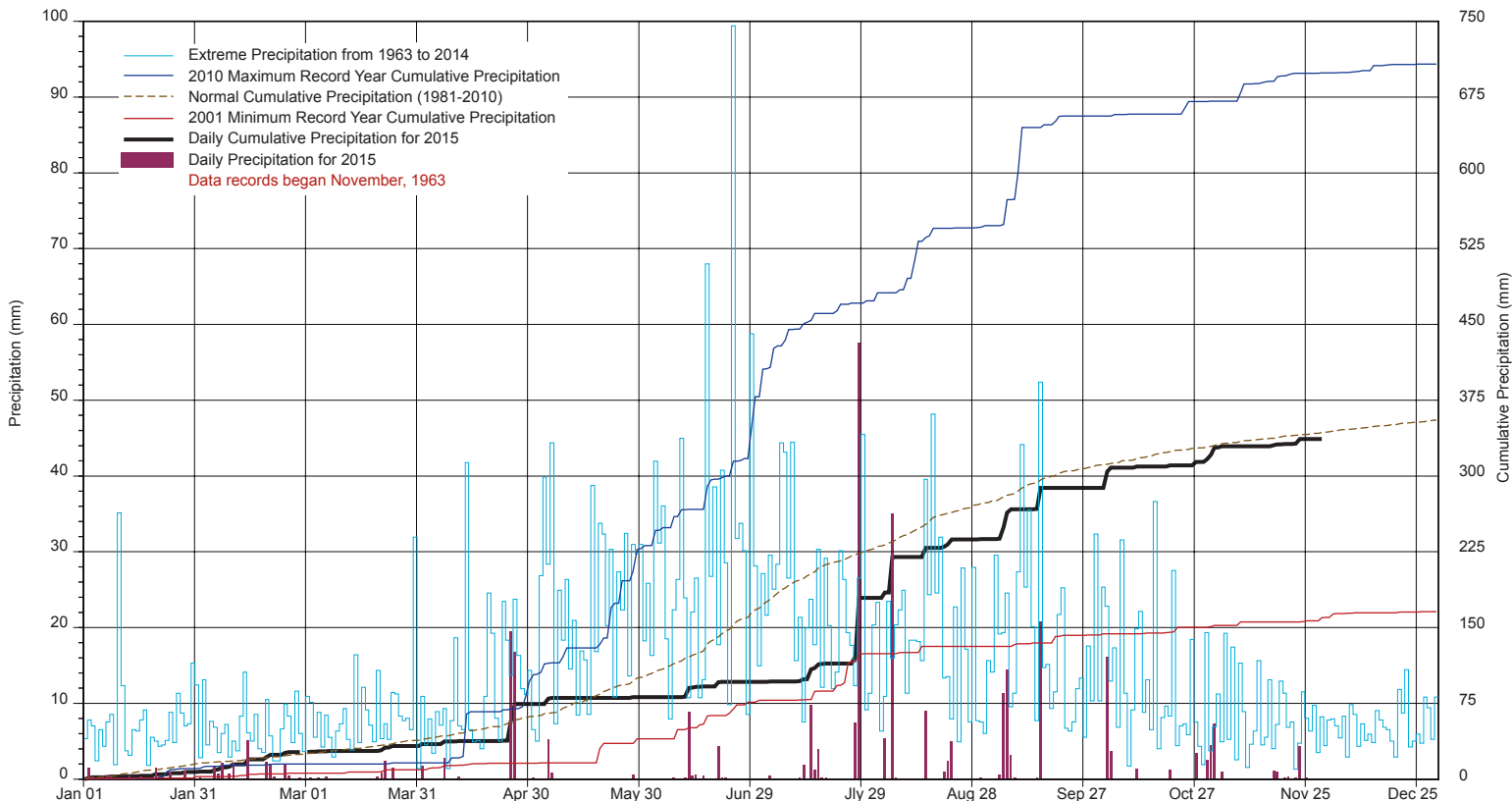
\*\*1975 forward \* more than one year

Notable Events for CRS Saskatoon - November						Saskatoon Area Stations			Glossary	
Element	Type	Day	New Record	Old Record	Year	Stn	Location	Period	Term	Definition
Temperature	Number of Frost Free Days		7	5	1983	SM	NWMP	c. 1892-1901	T	Trace of precipitation
	Number of days with temperatures <=2°C		27	28	1999	SE	Eby	1901-1941	Normal	30 year average beginning with the decade
Precipitation	Greatest Daily (mm)	1	7.3	7.0	1993	US	Univ. of Sask.	1915-1964	SOG	Depth of snow-on-the-ground in cm
						S	Saskatoon	1941-1942	na	not available
						SA	Saskatoon A	1942 -	<b>Degree-days</b>	
						NRC	Nat. Res. Council	1952-1966	Tm	Mean Temperature
						SRC	Sask. Res. Council	1963-	Growing	(Tm-5°C); if Tm ≤ 5°C then GDD = 0
						SWT	S'toon Water Treatment Plant	1974 -	Heating	(18°C-Tm); if Tm ≤ 18°C then HDD = 0
						SC	S'toon Central Ave	1974-1989	Cooling	(Tm-18°C); if Tm ≥ 18°C then CDD = 0
						S1	Saskatoon 1	1976-1978	Extreme Cooling	(Tm-24°C); if Tm ≥ 24°C then CDD = 0
						S2	Saskatoon 2	1977-1990		
						K	S'toon Kernen Farm	1993-2004		
						KCS	S'toon Kernen Farm CS	1996-		
						RCS	Environment Canada	2008-		
						SF	Sutherland Forestry	1943-1970		

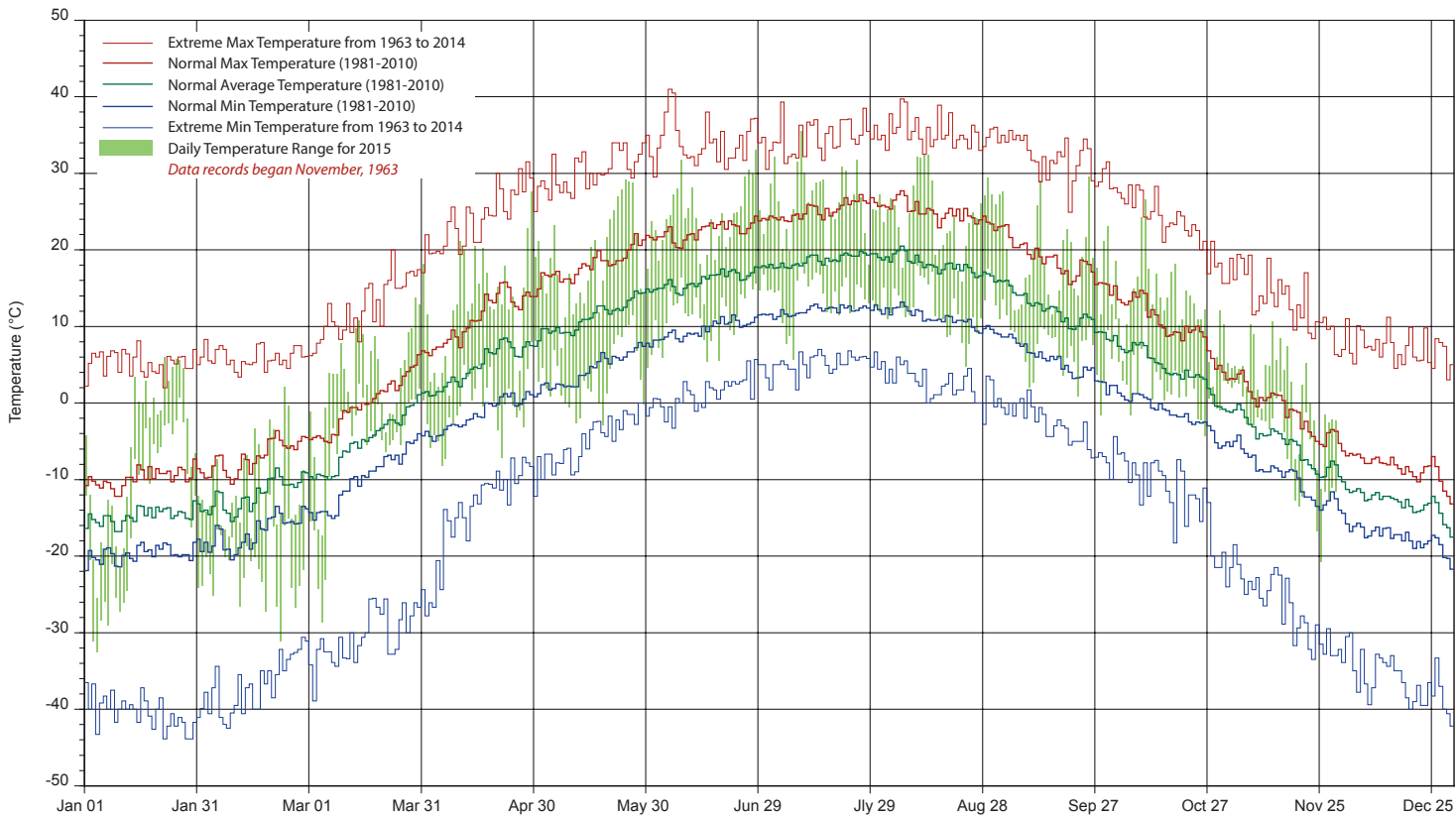
**SRC proudly recognizes the following CRS supporters:**



# SASKATCHEWAN RESEARCH COUNCIL SASKATOON CLIMATE REFERENCE STATION 2015 PRECIPITATION AND NORMALS



## 2015 TEMPERATURES AND NORMALS



SRC proudly recongnizes the following CRS supporters:

