



SRC CLIMATE REFERENCE STATION DAILY DATA REPORT

SASKATOON STATION 4057180

52°09' N 106°36' W 497 m asl Estab. 1963

Preliminary **SEPTEMBER 2014**

Day	Temperature						Degree-days			Precipitation			Relative Humidity		Station Pressure (sea level)	
	Max	Normal Max	Min	Normal Min	Mean	Normal Mean	Growing	Heating	Cooling	Weighing Gauge	Tipping Bucket	Notes	Max ½ hr Avg	Min ½ hr Avg	Max ½ hr Avg	Min ½ hr Avg
	°C	1981-2010	°C	1981-2010	°C	1981-2010	5°C base	18°C base	18°C base	mm	mm		%	%	mbar	mbar
1	22.0	23.0	7.6	9.0	14.8	16.0	9.8	3.2	0.0	0.3	0.6		87	32	1007	1005
2	19.7	23.1	10.1	8.6	14.9	15.9	9.9	3.1	0.0	1.1	1.6		92	44	1006	1005
3	18.3	23.3	8.4	8.6	13.4	16.0	8.4	4.6	0.0	0.0	0.2		97	53	1011	1006
4	20.1	21.6	6.7	9.0	13.4	15.3	8.4	4.6	0.0	0.0	0.0		94	30	1016	1011
5	19.7	20.3	8.6	8.5	14.2	14.4	9.2	3.8	0.0	0.0	0.0		89	40	1019	1015
6	22.9	20.3	10.9	7.8	16.9	14.1	11.9	1.1	0.0	0.0	0.0		77	36	1018	1012
7	28.9	20.7	11.5	7.4	20.2	14.1	15.2	0.0	2.2	0.0	0.0		83	22	1012	1002
8	11.6	20.9	4.2	7.7	7.9	14.3	2.9	10.1	0.0	8.5	6.8		94	58	1020	1006
9	7.8	19.4	2.9	6.6	5.4	13.0	0.4	12.6	0.0	0.0	0.0		89	43	1027	1020
10	8.3	18.8	0.5	6.5	4.4	12.7	0.0	13.6	0.0	0.0	0.0		91	41	1032	1027
11	10.3	20.2	2.0	6.0	6.2	13.1	1.2	11.8	0.0	0.0	0.0		78	30	1033	1027
12	14.6	19.1	0.1	6.7	7.4	12.9	2.4	10.6	0.0	0.0	0.0		83	30	1027	1015
13	13.0	18.2	2.5	5.8	7.8	12.0	2.8	10.2	0.0	0.3	0.4		93	45	1019	1015
14	16.6	19.1	0.6	5.5	8.6	12.3	3.6	9.4	0.0	0.0	0.0		95	31	1019	1017
15	23.3	19.1	4.1	6.1	13.7	12.6	8.7	4.3	0.0	0.0	0.2		83	28	1018	1013
16	25.2	19.3	6.0	5.7	15.6	12.5	10.6	2.4	0.0	0.0	0.0		88	28	1014	1010
17	18.3	17.6	6.1	6.1	12.2	11.9	7.2	5.8	0.0	0.0	0.0		96	28	1015	1006
18	23.7	16.9	9.7	4.4	16.7	10.6	11.7	1.3	0.0	0.0	0.0		90	47	1006	998
19	23.1	17.3	10.3	4.9	16.7	11.1	11.7	1.3	0.0	0.0	0.0		94	40	1007	1000
20	21.1	15.5	9.5	4.0	15.3	9.7	10.3	2.7	0.0	0.0	0.2		90	27	1020	1007
21	26.5	15.9	5.0	3.2	15.8	9.6	10.8	2.2	0.0	0.3	0.0		87	23	1021	1014
22	29.8	16.6	10.2	3.3	20.0	10.0	15.0	0.0	2.0	0.0	0.0		74	23	1014	1007
23	29.7	18.7	10.9	3.4	20.3	11.1	15.3	0.0	2.3	0.0	0.0		86	27	1010	1006
24	26.7	18.5	10.1	4.7	18.4	11.6	13.4	0.0	0.4	0.0	0.0		91	34	1011	1007
25	28.5	18.1	13.0	4.3	20.8	11.2	15.8	0.0	2.8	0.0	0.0		78	31	1012	1007
26	25.2	17.1	11.1	4.6	18.2	10.9	13.2	0.0	0.2	0.0	0.0		80	43	1013	1003
27	11.3	15.5	6.7	2.9	9.0	9.2	4.0	9.0	0.0	0.0	0.0		85	57	1028	1014
28	9.8	15.7	1.7	2.8	5.8	9.3	0.8	12.2	0.0	0.0	0.0		92	54	1030	1024
29	15.1	15.6	1.7	2.7	8.4	9.2	3.4	9.6	0.0	0.0	0.0		91	57	1024	1007
30	14.9	15.5	10.5	1.1	12.7	8.3	7.7	5.3	0.0	0.5	0.4		91	74	1006	1000
Total							245.7	154.8	9.9	11.0	10.4		Extreme / Date	Extreme / Date	Extreme / Date	Extreme / Date
Avg	19.5	18.7	6.8	5.6	13.2	12.2	1981-2010 Normal			37.0	Normal					
Extreme	29.8		0.1				219.9	182.5	7.6	396.0	Cumulative		97	22	1033	998
Date	22		12							310.0	Cumulative No		3	7	11	18

Note: Red numbers indicate manual calculation; Red cell indicate data not available

SRC proudly recognizes the following CRS supporters:

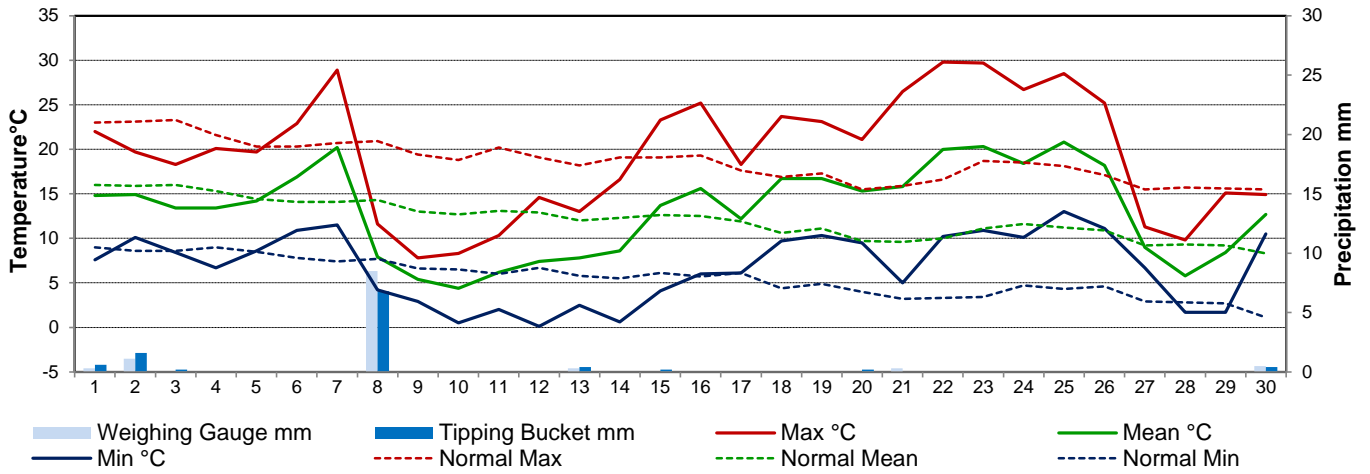


Agriculture and Agri-Food Canada

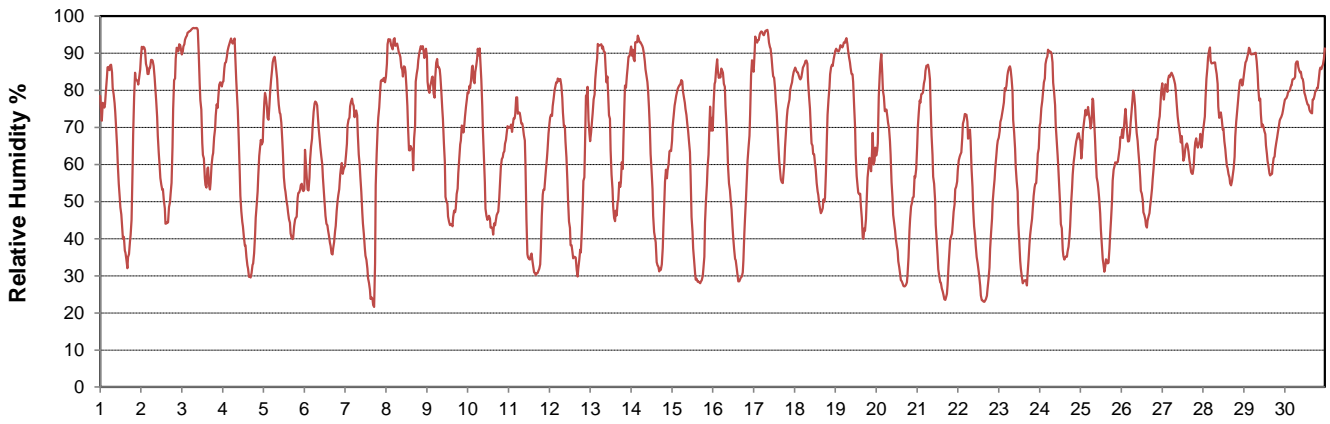
Agriculture et Agroalimentaire Canada



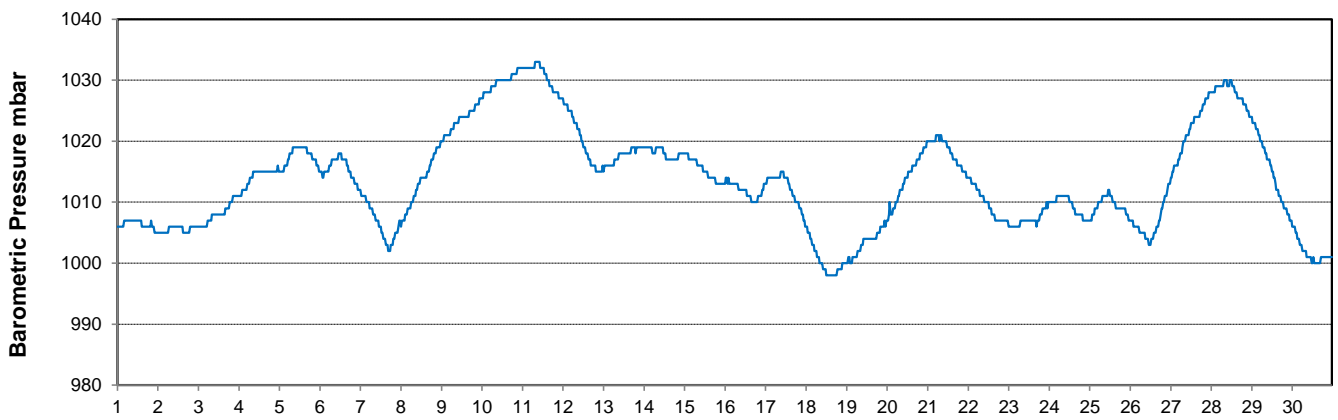
Temperature and Precipitation for September 2014



Relative Humidity for September 2014



Barometric Pressure Corrected to Sea Level for September 2014





SRC CLIMATE REFERENCE STATION DAILY DATA REPORT

SASKATOON STATION 4057180

52°09' N 106°36' W 497 m asl Estab. 1963

Preliminary **SEPTEMBER 2014**

Day	Wind Gust			Soil Temperatures at 0900hrs								Soil Moisture 30 cm	Radiation				
	Max	Direction	Time	Surface	5 cm	10 cm	20 cm	50 cm	100 cm	150 cm	300 cm		0900hrs	Bright Sunshine	Possible	% Possible	Global
	km/h			°C	°C	°C	°C	°C	°C	°C	°C	%	hours	hours		MJ/m ²	MJ/m ²
1	49.4	WNW	18:52	10.0	13.0	14.5	15.0	16.0	14.5	13.5	11.0	20.3	9.5	13.6	70.0	16.4	2.7
2	26.2	NNW	13:57	11.0	14.0	15.0	15.0	15.5	14.5	13.5	11.0	20.1	7.8	13.5	57.7	14.0	4.2
3	32.6	NE	15:38	9.5	13.5	15.0	15.0	15.5	14.0	13.5	11.0	19.9	4.1	13.5	30.5	11.8	6.3
4	29.5	WNW	23:09	9.5	13.0	14.5	15.0	15.5	14.0	13.5	11.0	19.5	11.2	13.4	83.7	17.0	3.1
5	30.5	WNW	3:07	10.5	13.0	14.5	14.5	15.5	14.0	13.5	11.0	19.2	9.9	13.3	74.4	15.5	4.4
6	36.3	WSW	2:24	12.5	14.0	15.0	15.0	15.5	14.0	13.5	11.0	19.0	11.6	13.3	87.5	17.2	2.0
7	44.0	N	17:49	14.0	14.5	15.5	15.5	15.5	14.0	13.0	11.0	18.8	11.9	13.2	90.3	17.6	2.0
8	42.1	NNE	16:50	6.0	14.0	15.0	16.0	15.5	14.0	13.0	11.0	19.2	0.0	13.1	0.0	5.6	4.7
9	27.7	NE	14:18	3.0	10.5	12.0	13.0	15.0	14.0	13.0	11.0	19.2	0.0	13.1	0.0	6.1	5.1
10	30.9	N	14:23	2.0	8.5	10.0	11.5	14.0	13.5	13.0	11.0	18.6	5.9	13.0	45.5	11.2	7.1
11	31.8	WSW	16:35	3.0	8.5	10.0	11.0	13.5	13.5	13.0	11.0	18.4	6.9	12.9	53.4	12.5	5.6
12	34.3	SSW	11:02	4.0	7.0	8.5	10.0	13.0	13.5	13.0	11.0	18.1	9.9	12.9	77.0	14.3	5.7
13	35.1	NNE	12:09	5.5	9.5	10.5	10.5	12.5	13.0	13.0	11.0	18.1	3.2	12.8	25.0	9.0	4.5
14	28.2	SSW	13:29	3.5	7.5	8.5	10.0	12.5	13.0	12.5	11.0	17.9	6.4	12.7	50.3	10.8	6.0
15	29.8	WSW	14:38	7.0	8.5	9.5	10.5	12.0	12.5	12.5	11.0	17.9	8.7	12.7	68.8	14.1	3.6
16	26.7	W	15:12	10.0	9.5	10.5	11.5	12.5	12.5	12.5	11.0	17.8	12.1	12.6	96.1	15.8	1.5
17	35.5	SE	22:46	8.0	11.5	12.0	12.5	12.5	12.0	12.5	11.0	17.7	5.4	12.5	43.1	9.7	4.1
18	31.2	SSE	0:04	11.5	11.5	12.5	12.5	12.5	12.0	12.0	11.0	17.6	9.4	12.5	75.5	11.1	4.8
19	35.6	W	22:42	11.0	12.5	13.5	13.0	13.0	12.5	12.0	11.0	17.6	5.1	12.4	41.2	8.8	3.7
20	65.6	W	1:34	10.5	12.5	13.5	13.5	13.5	12.5	12.0	11.0	17.5	11.9	12.3	96.6	15.2	1.5
21	35.1	SW	13:27	9.0	10.5	11.5	12.5	13.5	12.5	12.0	11.0	17.1	11.9	12.3	97.1	14.6	1.3
22	39.2	SSW	14:35	13.0	12.0	13.0	13.5	13.5	12.5	12.0	11.0	17.0	11.8	12.2	96.8	14.7	1.2
23	33.4	NNW	17:02	13.0	13.5	14.0	14.0	13.5	12.5	12.0	11.0	17.0	9.9	12.1	81.7	13.0	3.4
24	35.5	SE	17:02	11.5	13.5	14.5	14.5	14.0	12.5	12.0	11.0	16.9	10.5	12.1	87.1	10.9	5.8
25	32.6	NE	17:02	14.5	14.5	15.0	15.0	14.0	12.5	12.0	11.0	16.9	11.2	12.0	93.4	12.9	2.3
26	34.8	W	14:56	13.5	14.0	15.0	15.0	14.0	12.5	12.0	11.0	16.8	11.4	11.9	95.6	13.1	1.9
27	34.6	NW	8:42	7.5	13.0	14.0	14.5	14.5	12.5	12.0	11.0	16.5	0.1	11.9	0.8	5.6	4.8
28	25.4	NNE	0:42	4.5	10.5	11.5	12.5	13.5	12.5	12.0	11.0	16.1	3.6	11.8	30.5	7.1	4.9
29	41.8	SE	16:35	6.5	8.0	9.5	11.0	13.0	12.5	12.0	11.0	15.8	6.7	11.7	57.2	10.1	3.7
30	32.5	SSE	1:12	11.0	11.5	11.5	12.0	12.5	12.5	12.0	11.0	16.0	0.0	11.7	0.0	2.9	2.5
Total													228.0	378.54	60.2	358.6	114.4
Mean				8.9	11.6	12.7	13.2	13.9	13.1	12.6	11.0	18	1981-2010 Normal for Radiation				
Extreme	65.6	W	1:34	1971- 2000 Normal for Soil Temperatures									197.4	379.1	52.1	374.1	125.5
Date	20				10.5	11.0	12.5	13.2	12.4	11.7	9.9		No. of Bright Sunshine days = 27				

Note: Red numbers indicate manual calculation

SRC proudly recognizes the following CRS supporters:

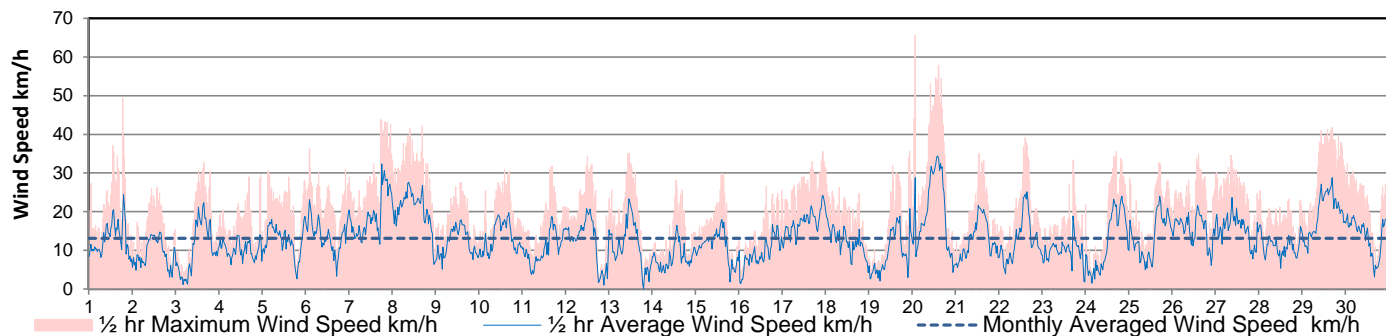


Agriculture and Agri-Food Canada

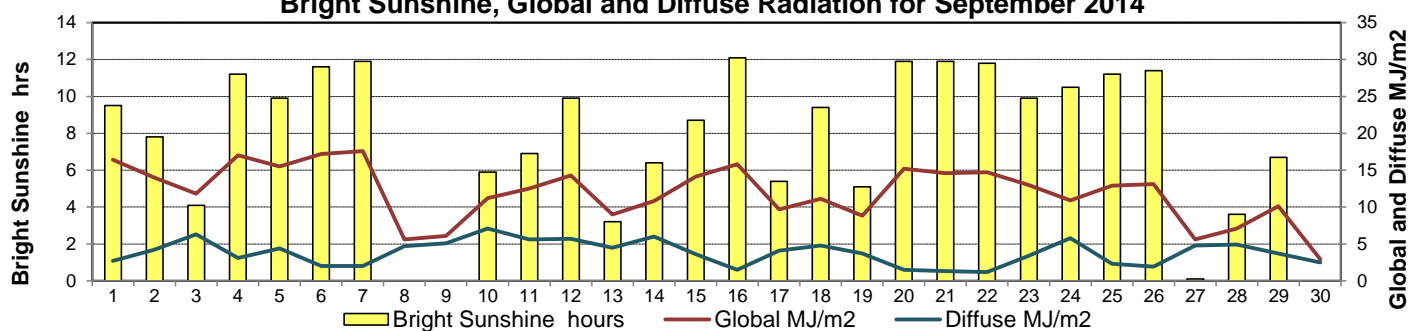
Agriculture et Agroalimentaire Canada



Wind Speed for September 2014

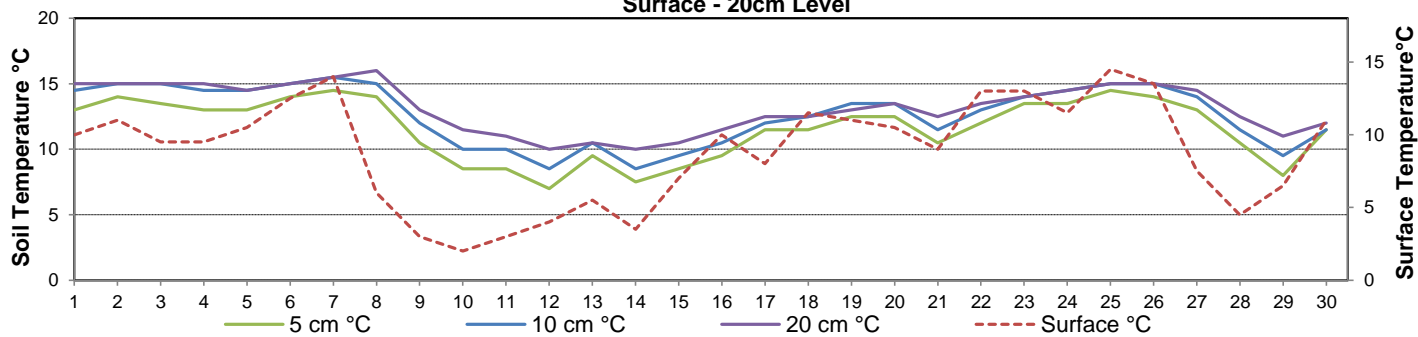


Bright Sunshine, Global and Diffuse Radiation for September 2014



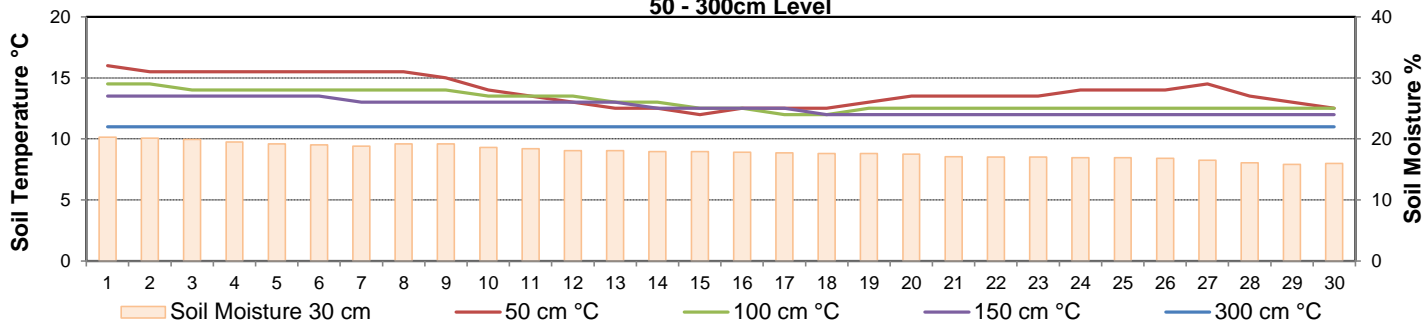
Soil Temperatures for September 2014

Surface - 20cm Level



Soil Temperatures for September 2014

50 - 300cm Level





SRC CLIMATE REFERENCE STATION DAILY DATA REPORT

SASKATOON STATION 4057180

52°09' N 106°36' W 497 m asl Estab. 1963

Preliminary **SEPTEMBER 2014**

Extreme Records for September

Max/Min Temperature °C			Precipitation - Monthly mm				Wind Monthly km/h				CRS Bright Sunshine - Monthly						
S'toon Area	Date	Site	S'toon CRS	Date	S'toon Area	Date	Site	S'toon CRS	Date	S'toon Airport	Date	S'toon CRS**	Date	Hours	Year	No. of Days	Year
36.1	22/1950	SF	35.6	04/1978	128.8	2006	SWT	128.4	2006	148 ^W	22/1967	89	1986	302.2	2011	30	1966*
-11.1	28,30/1908,'61	SE SF	-7.8	30/1974	0.6	1995	SA	0.8	1995, 2012					114.6	1986	20	1984

**1975 forward * more than one year

Notable Events for CRS Saskatoon - September						Saskatoon Area Stations			Glossary	
Element	Type	Day	New Record	Old Record	Year	SM	NWMP	c. 1892-1901	T	Trace of precipitation
Temperature	Highest Minimum	23	10.9°C	10.1°C	2009	SE	Eby	1901-1941	Normal	30 year average beginning with the decade
	Daily Temperature	25	13.0°C	10.0°C	1974	US	Univ. of Sask.	1915-1964	SOG	Depth of snow-on-the-ground in cm
	Highest Mean	20	15.3°C	15.3°C	2009	S	Saskatoon	1941-1942	na	not available
	Daily Temperature	22	20.0°C	18.7°C	2011	SA	Saskatoon A	1942 -	Degree-days	
						NRC	Nat. Res. Council	1952-1966	Tm	Mean Temperature
						SRC	Sask. Res. Council	1963-	Growing	(Tm-5°C); if Tm ≤ 5°C then GDD = 0
						SWT	S'toon Water Treatment Plant	1974 -	Heating	(18°C-Tm); if Tm ≤ 18°C then HDD = 0
						SC	S'toon Central Ave	1974-1989	Cooling	(Tm-18°C); if Tm ≥ 18°C then CDD = 0
						S1	Saskatoon 1	1976-1978	Extreme Cooling	(Tm-24°C); if Tm ≥ 24°C then CDD = 0
						S2	Saskatoon 2	1977-1990		
						K	S'toon Kernen Farm	1993-2004		
						KCS	S'toon Kernen Farm CS	1996-		
						RCS	Environment Canada	2008-		
						SF	Sutherland Forestry	1943-1970		

SRC proudly recognizes the following CRS supporters:

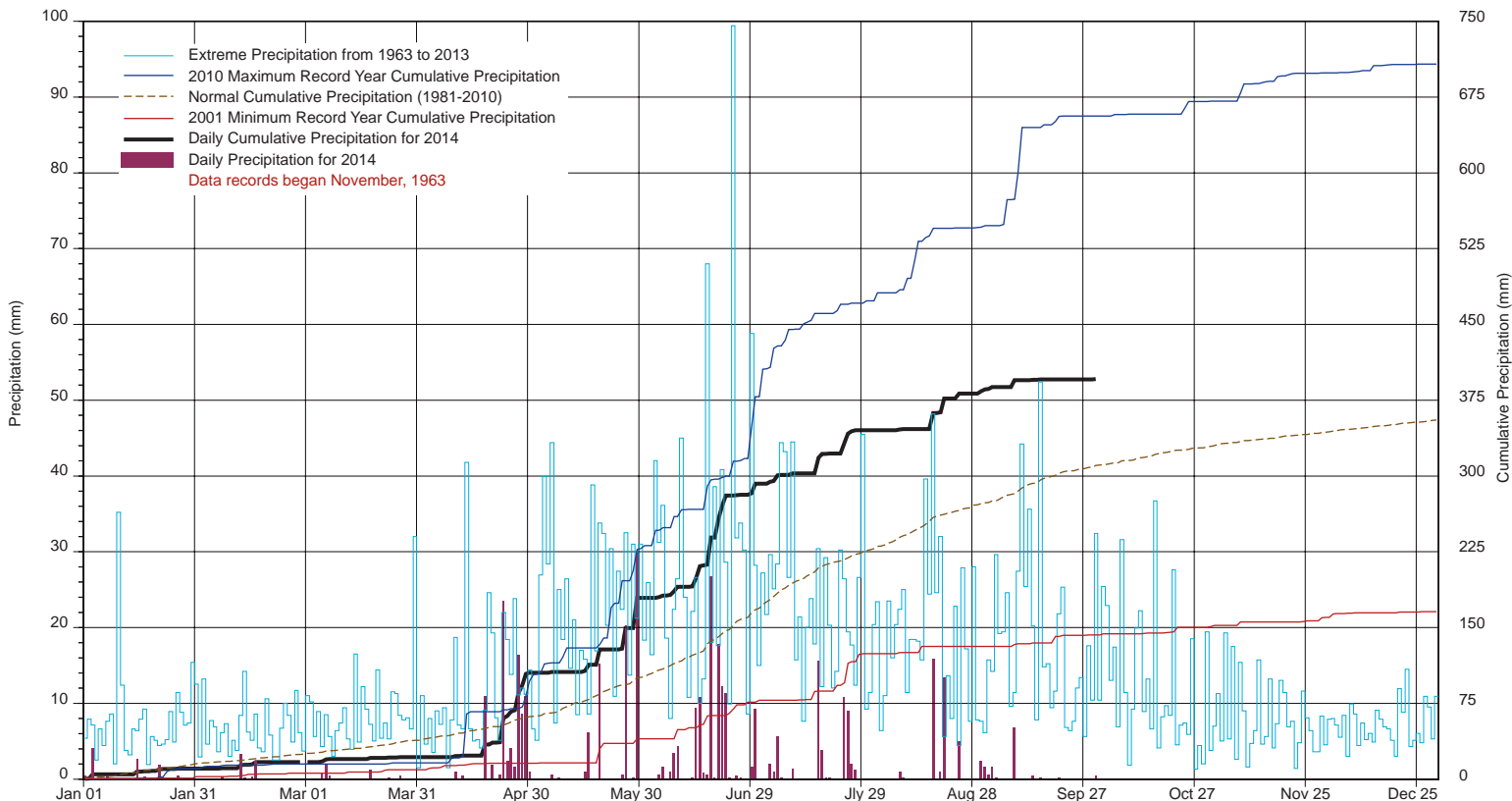


Agriculture and Agri-Food Canada

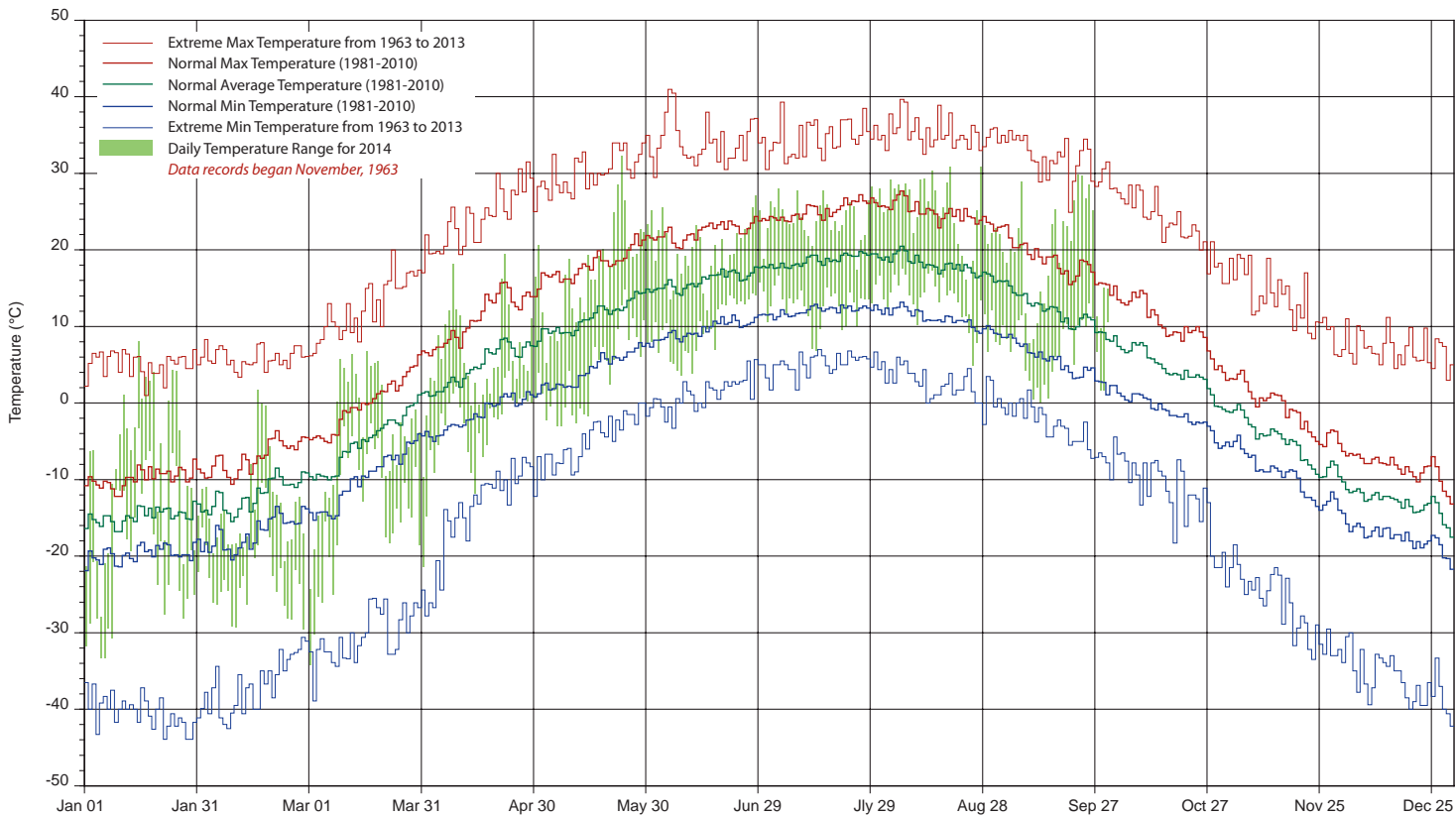
Agriculture et Agroalimentaire Canada



SASKATCHEWAN RESEARCH COUNCIL SASKATOON CLIMATE REFERENCE STATION 2014 PRECIPITATION AND NORMALS



2014 TEMPERATURES AND NORMALS



SRC proudly recognizes the following CRS supporters:



Agriculture and
Agri-Food Canada

Agriculture et
Agroalimentaire Canada

