



SRC CLIMATE REFERENCE STATION DAILY DATA REPORT

**SASKATOON STATION 4057180**

Saskatchewan 52°09' N 106°36' W 497 m asl Estab. 1963

Preliminary **SEPTEMBER 2015**

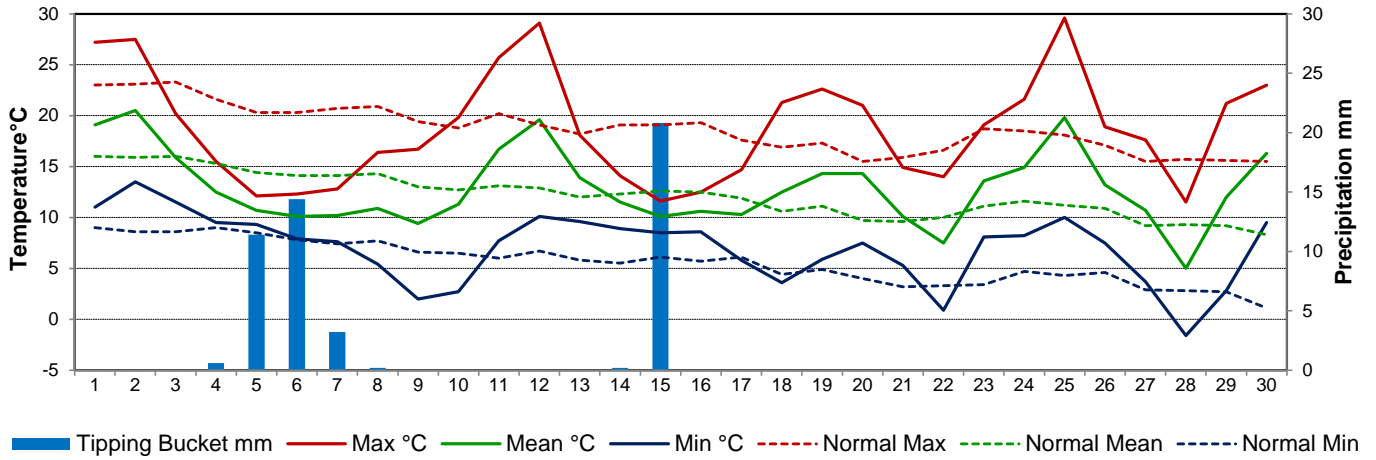
Day	Temperature						Degree-days			Precipitation			Relative Humidity		Station Pressure (sea level)	
	Max	Normal Max	Min	Normal Min	Mean	Normal Mean	Growing	Heating	Cooling	Weighing Gauge	Tipping Bucket	Notes	Max ½ hr Avg	Min ½ hr Avg	Max ½ hr Avg	Min ½ hr Avg
	°C	1981-2010	°C	1981-2010	°C	1981-2010	5°C base	18°C base	18°C base	mm	mm		%	%	mbar	mbar
1	27.2	23.0	11.0	9.0	19.1	16.0	14.1	0.0	1.1	m	0.0		72	22	1007	1003
2	27.5	23.1	13.5	8.6	20.5	15.9	15.5	0.0	2.5	m	0.0		68	35	1007	1001
3	20.2	23.3	11.5	8.6	15.9	16.0	10.9	2.1	0.0	m	0.0		78	44	1015	1005
4	15.5	21.6	9.5	9.0	12.5	15.3	7.5	5.5	0.0	m	0.6		86	50	1019	1015
5	12.1	20.3	9.3	8.5	10.7	14.4	5.7	7.3	0.0	m	11.4		95	85	1019	1011
6	12.3	20.3	7.9	7.8	10.1	14.1	5.1	7.9	0.0	m	14.4		95	74	1010	1003
7	12.8	20.7	7.6	7.4	10.2	14.1	5.2	7.8	0.0	m	3.2		95	67	1011	1003
8	16.4	20.9	5.4	7.7	10.9	14.3	5.9	7.1	0.0	m	0.2		91	55	1013	1010
9	16.7	19.4	2.0	6.6	9.4	13.0	4.4	8.6	0.0	m	0.0		98	37	1017	1013
10	19.8	18.8	2.7	6.5	11.3	12.7	6.3	6.7	0.0	m	0.0		94	34	1021	1017
11	25.7	20.2	7.7	6.0	16.7	13.1	11.7	1.3	0.0	m	0.0		87	34	1021	1013
12	29.1	19.1	10.1	6.7	19.6	12.9	14.6	0.0	1.6	m	0.0		85	28	1013	1002
13	18.1	18.2	9.6	5.8	13.9	12.0	8.9	4.1	0.0	m	0.0		87	52	1006	1003
14	14.1	19.1	8.9	5.5	11.5	12.3	6.5	6.5	0.0	m	0.2		87	66	1009	1006
15	11.6	19.1	8.5	6.1	10.1	12.6	5.1	7.9	0.0	m	20.8		95	82	1009	1002
16	12.5	19.3	8.6	5.7	10.6	12.5	5.6	7.4	0.0	m	0.0		95	72	1010	1005
17	14.7	17.6	5.8	6.1	10.3	11.9	5.3	7.7	0.0	m	0.0		95	45	1011	1008
18	21.3	16.9	3.6	4.4	12.5	10.6	7.5	5.5	0.0	m	0.0		90	28	1011	1009
19	22.6	17.3	5.9	4.9	14.3	11.1	9.3	3.7	0.0	m	0.0		85	31	1008	1002
20	21.0	15.5	7.5	4.0	14.3	9.7	9.3	3.7	0.0	m	0.0		86	46	1004	997
21	14.9	15.9	5.3	3.2	10.1	9.6	5.1	7.9	0.0	m	0.0		90	36	1017	996
22	14.0	16.6	0.9	3.3	7.5	10.0	2.5	10.5	0.0	m	0.0		91	37	1022	1017
23	19.1	18.7	8.1	3.4	13.6	11.1	8.6	4.4	0.0	m	0.0		70	37	1020	1015
24	21.6	18.5	8.2	4.7	14.9	11.6	9.9	3.1	0.0	m	0.0		95	52	1019	1016
25	29.6	18.1	10.0	4.3	19.8	11.2	14.8	0.0	1.8	m	0.0		89	21	1015	1008
26	18.9	17.1	7.5	4.6	13.2	10.9	8.2	4.8	0.0	m	0.0		90	40	1008	1006
27	17.6	15.5	3.7	2.9	10.7	9.2	5.7	7.3	0.0	m	0.0		84	22	1016	1008
28	11.5	15.7	-1.6	2.8	5.0	9.3	0.0	13.0	0.0	m	0.0		80	28	1020	1017
29	21.2	15.6	2.8	2.7	12.0	9.2	7.0	6.0	0.0	m	0.0		80	26	1018	1012
30	23.0	15.5	9.5	1.1	16.3	8.3	11.3	1.7	0.0	m	0.0		86	25	1018	1012
Total							237.5	159.5	7.0	m	50.8		Extreme / Date	Extreme / Date	Extreme / Date	Extreme / Date
Avg	18.8	18.7	7.0	5.6	12.9	12.2	1981-2010 Normal			37.0	Normal					
Extreme	29.6		-1.6				219.9	182.5	7.6	288.3	Cumulative		98	21	1022	996
Date	25		28							310.0	Cumulative No		9	25	22	21

Note: Red numbers indicate manual calculation; Red cell indicate data not available

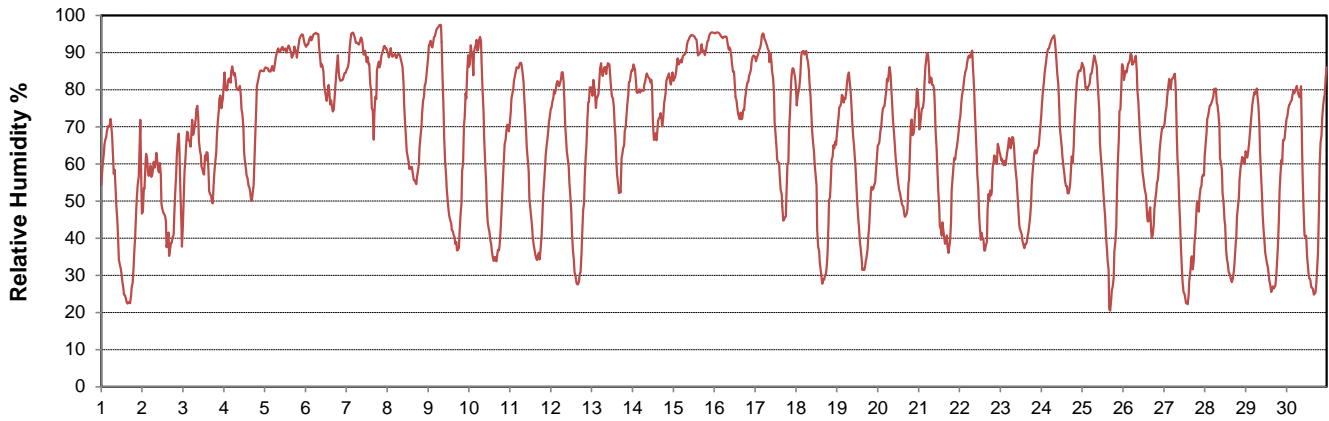
**SRC proudly recognizes the following CRS supporters:**



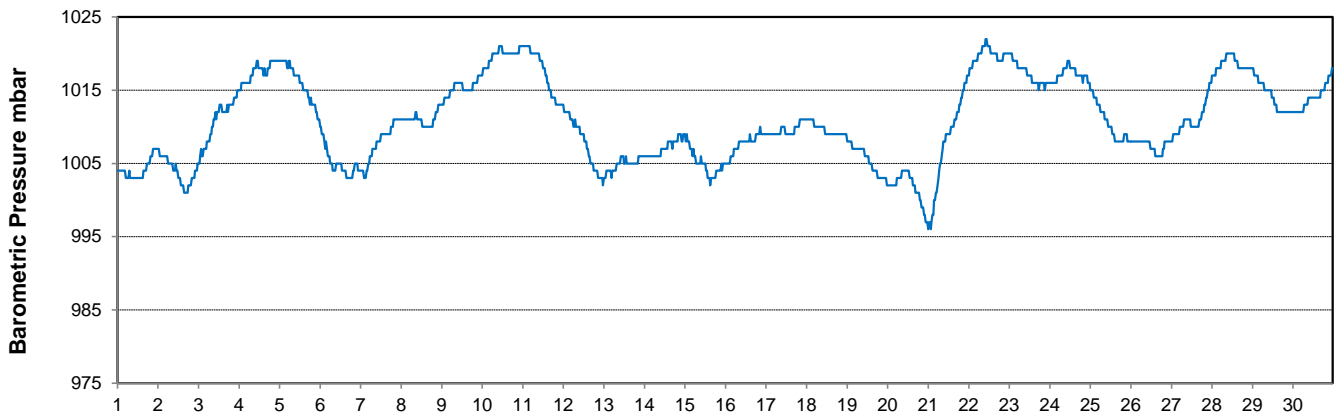
### Temperature and Precipitation for September 2015



### Relative Humidity for September 2015



### Barometric Pressure Corrected to Sea Level for September 2015





# SRC CLIMATE REFERENCE STATION DAILY DATA REPORT

**SASKATOON STATION 4057180**

Saskatchewan 52°09' N 106°36' W 497 m asl Estab. 1963

Preliminary **SEPTEMBER 2015**

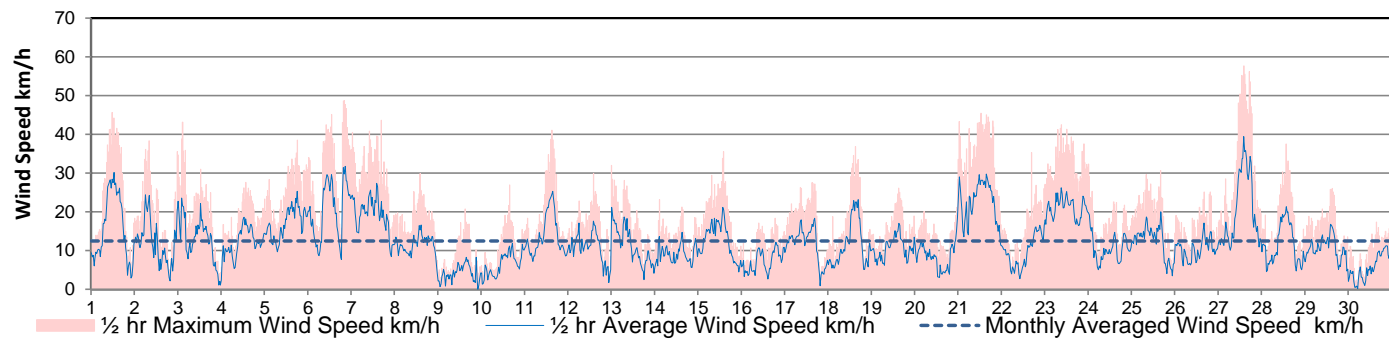
Day	Wind Gust			Soil Temperatures at 0900hrs								Soil Moisture 30 cm 0900hrs %	Radiation				
	Max	Direction	Time	Surface	5 cm	10 cm	20 cm	50 cm	100 cm	150 cm	300 cm		Bright Sunshine	Possible	% Possible	Global	Diffuse
	km/h			°C	°C	°C	°C	°C	°C	°C	°C		hours	hours		MJ/m <sup>2</sup>	MJ/m <sup>2</sup>
1	45.6	WSW	11:33	16.0	15.0	16.0	17.0	16.5	14.5	13.5	11.5	22	12.3	13.6	90.4	19.9	2.2
2	38.4	SE	8:14	16.0	15.5	16.0	16.5	16.5	14.5	13.5	11.5	21	5.9	13.5	43.6	9.7	5.8
3	43.2	NW	2:31	12.0	16.0	16.5	17.0	16.0	14.5	13.5	11.5	21	5.9	13.5	43.8	12.5	7.4
4	27.7	NE	13:54	10.5	14.5	15.5	16.0	16.0	14.5	13.5	11.5	20	1.0	13.4	7.5	6.9	5.2
5	38.5	NE	18:20	9.5	13.5	14.5	15.0	15.5	14.5	13.5	11.5	20	0.0	13.4	0.0	3.1	2.5
6	48.7	WSW	20:29	11.0	13.0	13.5	14.0	15.0	14.0	13.5	11.5	25	1.3	13.3	9.8	6.9	5.1
7	43.7	WNW	16:32	8.5	12.0	12.5	13.0	14.5	14.0	13.5	11.5	24	1.5	13.2	11.4	7.1	5.4
8	29.8	NW	14:27	7.5	11.0	11.5	12.5	14.0	14.0	13.5	11.5	25	10.0	13.2	76.0	16.0	4.7
9	20.7	NNW	15:21	7.0	10.0	11.0	12.5	14.0	13.5	13.5	11.5	24	12.5	13.1	95.6	19.3	1.7
10	27.0	SW	15:31	9.5	9.5	11.0	12.5	13.5	13.5	13.0	11.5	24	12.3	13.0	94.5	18.4	1.7
11	41.1	WSW	15:04	11.5	11.5	12.0	13.0	13.5	13.5	13.0	11.5	23	12.0	13.0	92.7	16.8	3.4
12	30.0	WNW	0:19	14.5	12.5	13.5	14.0	13.5	13.0	13.0	11.5	23	12.0	12.9	93.2	17.8	1.6
13	32.0	N	14:24	12.0	14.0	14.5	14.5	14.0	13.0	13.0	11.5	23	3.7	12.8	28.9	8.4	4.2
14	23.1	S	2:41	10.5	12.5	13.0	14.0	14.0	13.0	13.0	11.5	23	0.1	12.8	0.8	5.5	4.4
15	35.6	ENE	14:27	10.0	12.5	13.0	13.5	14.0	13.0	13.0	11.5	23	0.0	12.7	0.0	1.8	1.5
16	18.3	SW	18:42	9.5	12.0	12.0	12.5	13.5	13.0	12.5	11.5	28	0.1	12.6	0.8	5.4	4.4
17	27.6	W	15:28	9.0	11.5	12.0	12.5	13.0	13.0	12.5	11.5	28	6.5	12.6	51.8	11.4	5.9
18	36.9	WSW	15:22	7.5	9.5	10.5	11.5	13.0	13.0	12.5	11.5	28	12.0	12.5	96.1	16.5	2.3
19	26.2	SSW	15:00	9.5	10.0	11.0	12.0	13.0	12.5	12.5	11.5	28	11.3	12.4	91.0	16.0	1.8
20	28.4	NE	23:56	10.5	10.5	11.5	12.0	12.5	12.5	12.5	11.5	28	9.7	12.4	78.5	12.8	4.0
21	45.5	NW	12:59	8.0	12.0	12.5	13.0	13.0	12.5	12.5	11.5	27	7.5	12.3	61.0	12.8	2.6
22	35.4	ESE	16:42	4.5	8.5	9.5	11.5	13.0	12.5	12.5	11.5	27	7.2	12.2	58.9	11.7	3.4
23	42.5	SE	9:13	10.0	9.5	10.5	11.0	12.5	12.5	12.5	11.5	26	11.2	12.2	92.2	15.2	2.0
24	32.3	SE	0:19	10.5	10.5	11.0	11.5	12.5	12.5	12.5	11.5	26	8.8	12.1	72.8	12.0	4.2
25	30.7	SW	16:06	13.5	12.0	12.5	12.5	12.5	12.0	12.0	11.5	26	11.0	12.0	91.5	12.9	4.0
26	25.2	NW	16:02	10.0	11.5	12.5	13.0	13.0	12.0	12.0	11.5	25	9.2	12.0	77.0	11.6	4.6
27	57.7	W	14:19	8.5	10.0	11.0	12.5	13.0	12.0	12.0	11.5	25	9.1	11.9	76.5	12.1	2.5
28	37.5	WNW	13:54	2.0	7.5	9.0	10.5	12.5	12.0	12.0	11.5	24	9.5	11.8	80.4	12.9	3.2
29	26.0	SSW	15:08	7.0	7.5	8.5	10.0	12.0	12.0	12.0	11.0	24	10.7	11.8	91.1	14.1	1.8
30	17.4	NNE	15:58	10.0	10.0	10.5	11.0	11.5	12.0	12.0	11.0	24	10.0	11.7	85.5	13.2	1.5
Total													224.3	379.52	59.1	360.7	105.0
Mean				9.9	11.5	12.3	13.1	13.7	13.1	12.8	11.5	24.4	1981-2010 Normal for Radiation				
Extreme	57.7	W	14:19	1971- 2000 Normal for Soil Temperatures									197.4	379.1	52.1	374.1	125.5
Date	27				10.5	11.0	12.5	13.2	12.4	11.7	9.9		No. of Bright Sunshine days = 28				

Note: Red numbers indicate manual calculation

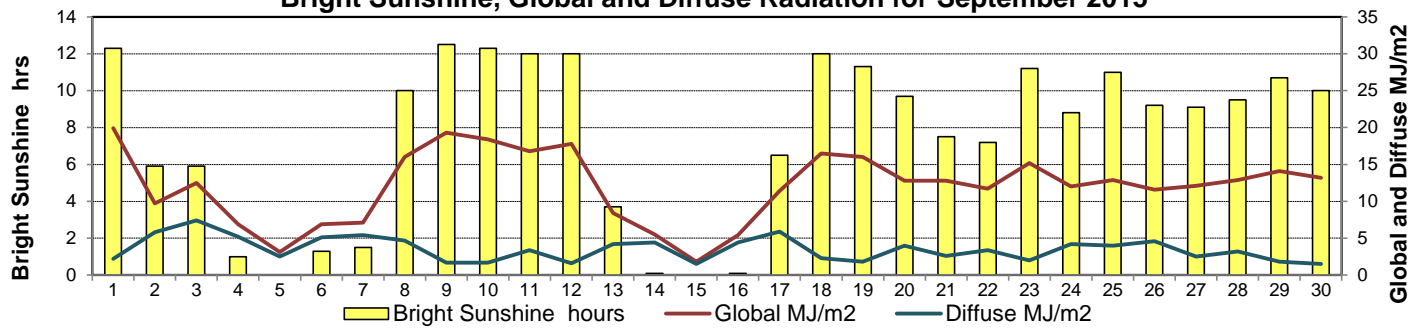
## SRC proudly recognizes the following CRS supporters:



### Wind Speed for September 2015

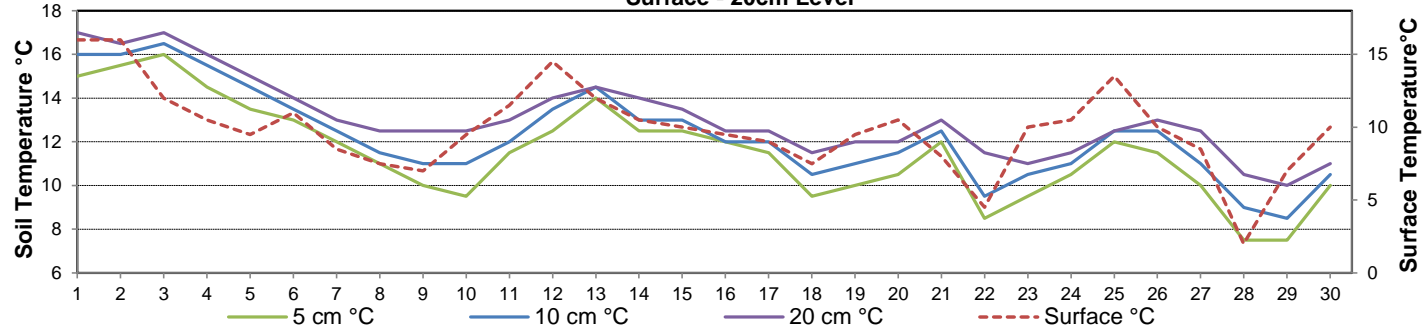


### Bright Sunshine, Global and Diffuse Radiation for September 2015



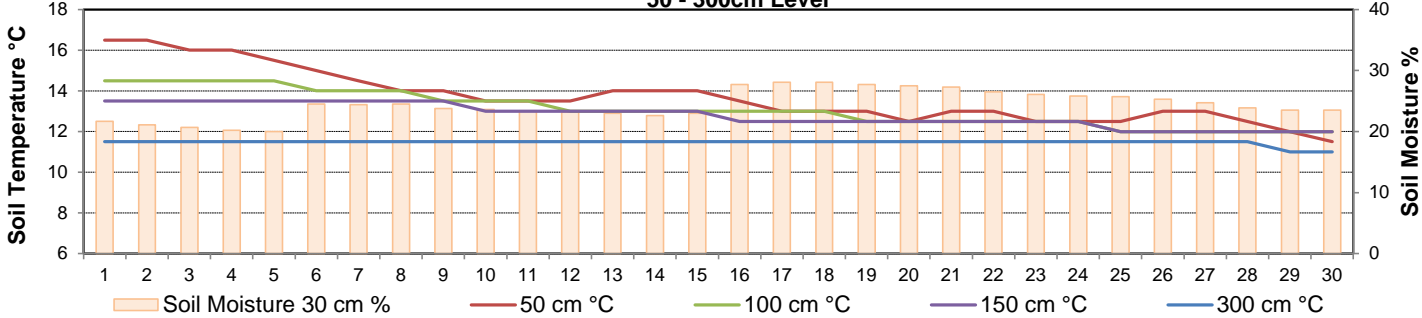
### Soil Temperatures for September 2015

Surface - 20cm Level



### Soil Temperatures for September 2015

50 - 300cm Level





**SRC CLIMATE REFERENCE STATION DAILY DATA REPORT**

**SASKATOON STATION 4057180**

52°09' N 106°36' W 497 m asl Estab. 1963

Preliminary **SEPTEMBER 2015**

**Extreme Records for September**

Max/Min Temperature °C			Precipitation - Monthly mm				Wind Monthly km/h				CRS Bright Sunshine - Monthly						
S'toon Area	Date	Site	S'toon CRS	Date	S'toon Area	Date	Site	S'toon CRS	Date	S'toon Airport	Date	S'toon CRS**	Date	Hours	Year	No. of Days	Year
36.1	22/1950	SF	35.6	04/1978	128.8	2006	SWT	128.4	2006	148 <sup>W</sup>	22/1967	89	1986	302.2	2011	30	1966*
-11.1	28,30/1908,'61	SE SF	-7.8	30/1974	0.6	1995	SA	0.8	1995, 2012					114.6	1986	20	1984

\*\*1975 forward \* more than one year

Notable Events for CRS Saskatoon - September						Saskatoon Area Stations			Glossary	
Element	Type	Day	New Record	Old Record	Year	SM	NWMP	c. 1892-1901	T	Trace of precipitation
Temperature	Extreme Maximum Daily	12	29.1	28.9	1969	SE	Eby	1901-1941	Normal	30 year average beginning with the decade
	Daily Average	12	19.6	19.5	1995	US	Univ. of Sask.	1915-1964	SOG	Depth of snow-on-the-ground in cm
						S	Saskatoon	1941-1942	na	not available
						SA	Saskatoon A	1942 -	<b>Degree-days</b>	
						NRC	Nat. Res. Council	1952-1966	Tm	Mean Temperature
						SRC	Sask. Res. Council	1963-	Growing	(Tm-5°C); if Tm ≤ 5°C then GDD = 0
						SWT	S'toon Water Treatment Plant	1974 -	Heating	(18°C-Tm); if Tm ≤ 18°C then HDD = 0
						SC	S'toon Central Ave	1974-1989	Cooling	(Tm-18°C); if Tm ≥ 18°C then CDD = 0
						S1	Saskatoon 1	1976-1978	Extreme Cooling	(Tm-24°C); if Tm ≥ 24°C then CDD = 0
						S2	Saskatoon 2	1977-1990		
						K	S'toon Kernen Farm	1993-2004		
						KCS	S'toon Kernen Farm CS	1996-		
						RCS	Environment Canada	2008-		
						SF	Sutherland Forestry	1943-1970		

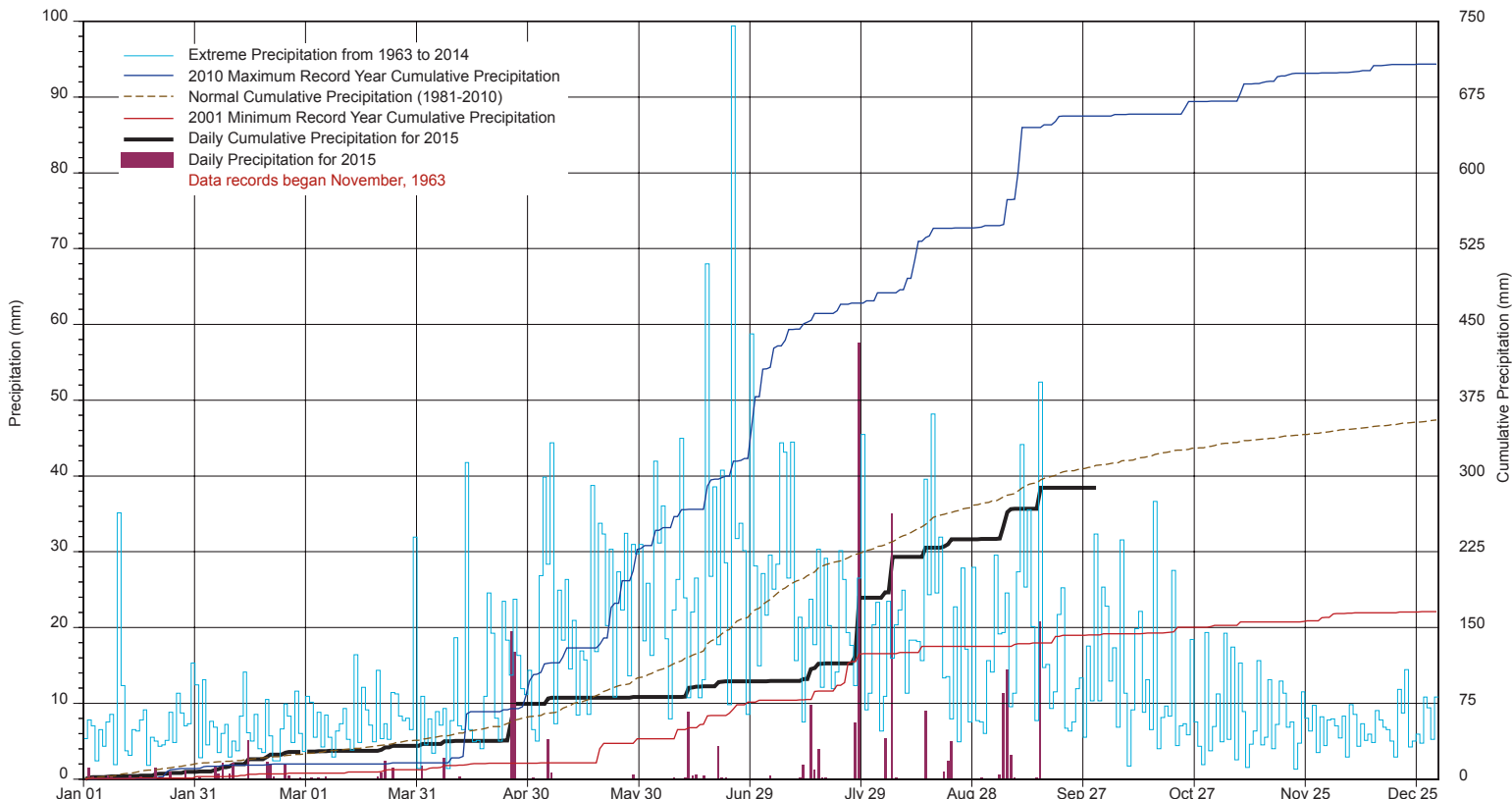
While 1 metre air temps remained above zero on the 22, the temperatures at grass level (6 cm above ground surface) did go below zero.

The 30+ year old Belfort weighing gauge has been retired. A Geonor (T-200B3) weighing gauge is scheduled to be installed early October.

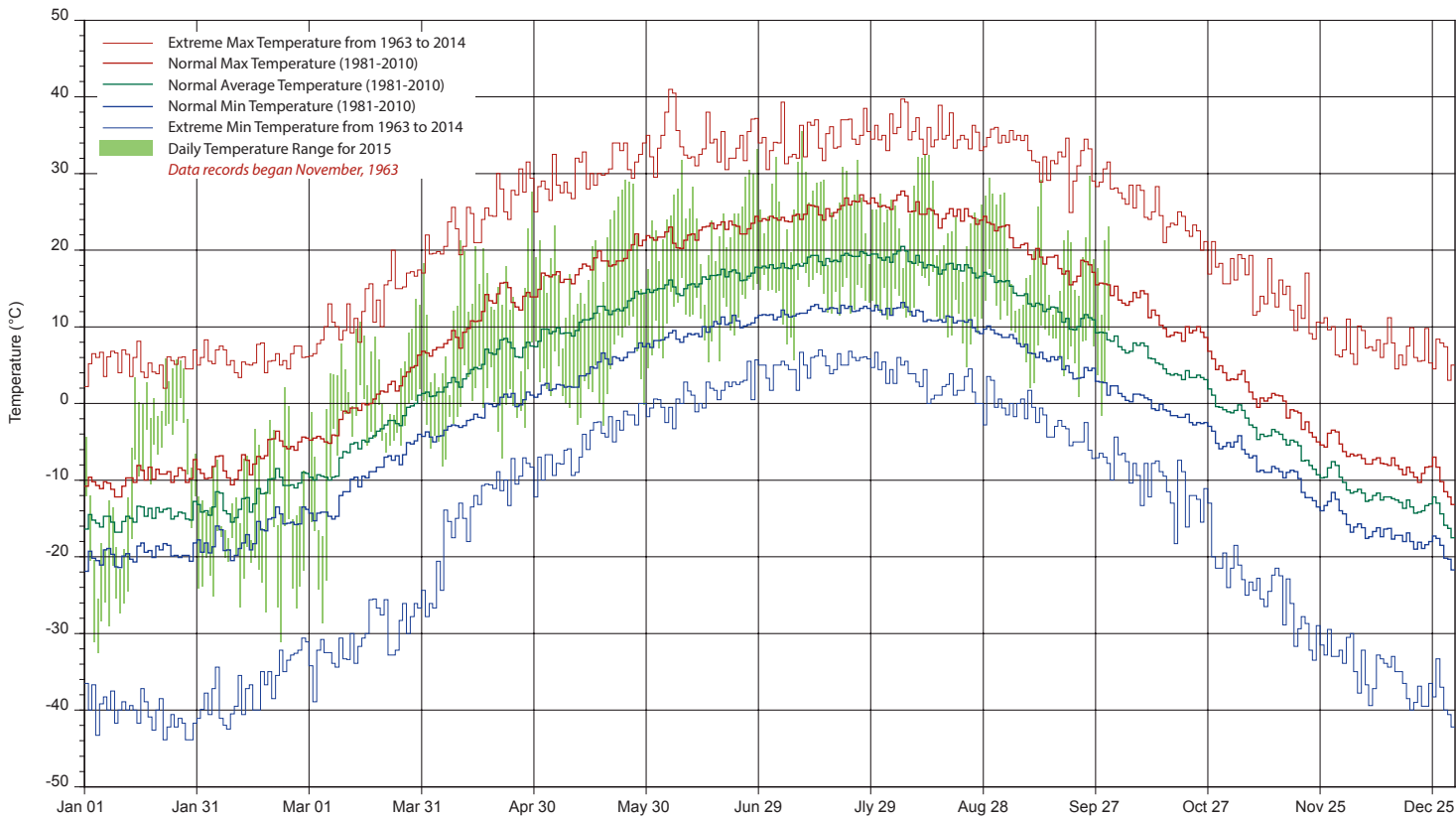
**SRC proudly recognizes the following CRS supporters:**



# SASKATCHEWAN RESEARCH COUNCIL SASKATOON CLIMATE REFERENCE STATION 2015 PRECIPITATION AND NORMALS



## 2015 TEMPERATURES AND NORMALS



SRC proudly recongnizes the following CRS supporters:

